

09.08/99

TIP PROJECT: BR-0048

C204492

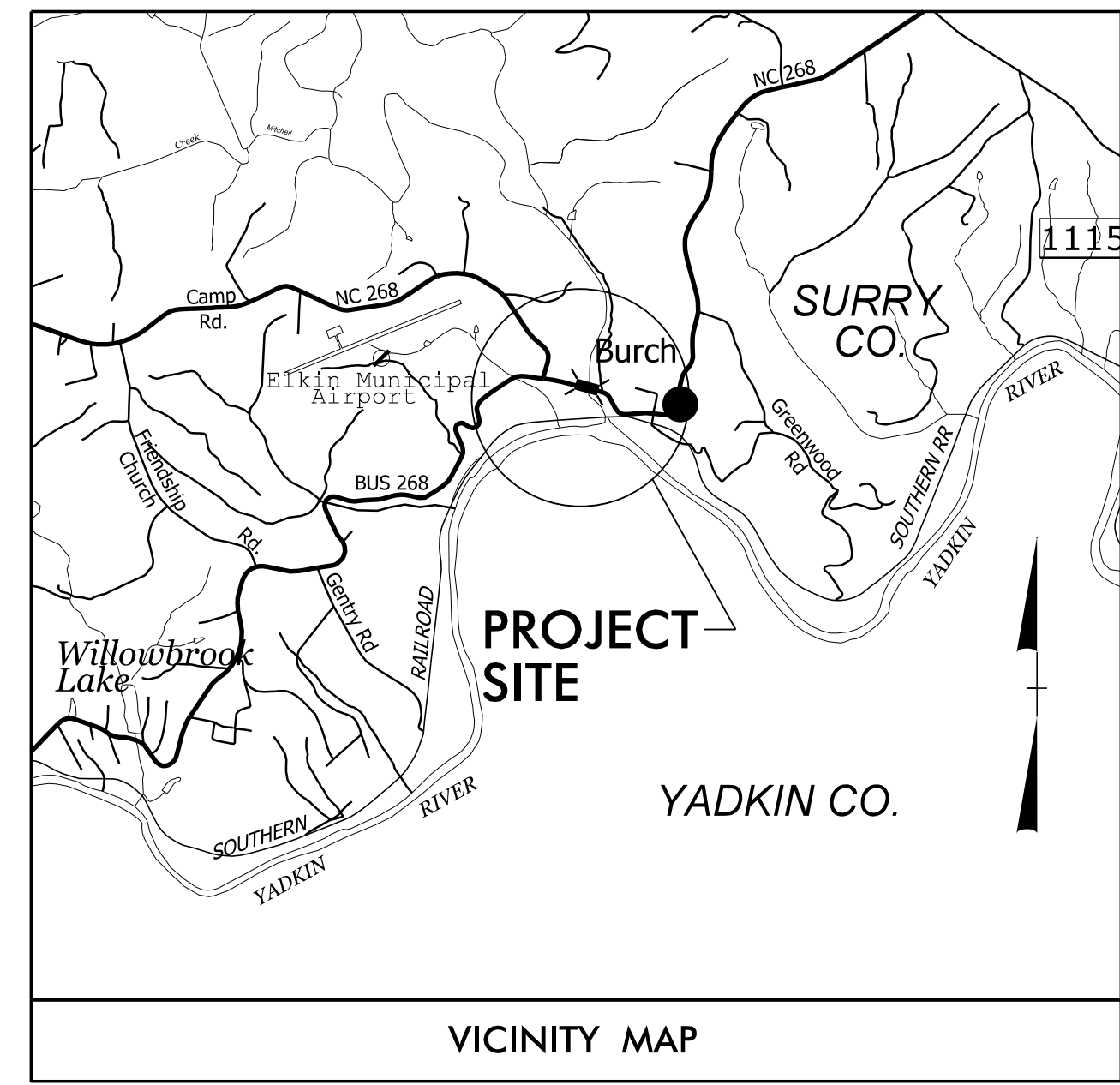
4/12/2022  
BR0048.UIC\_PSH\_bor.dgn  
Teresa.McClung

# STATE OF NORTH CAROLINA DIVISION OF HIGHWAYS

## UTILITIES BY OTHERS PLANS SURRY COUNTY

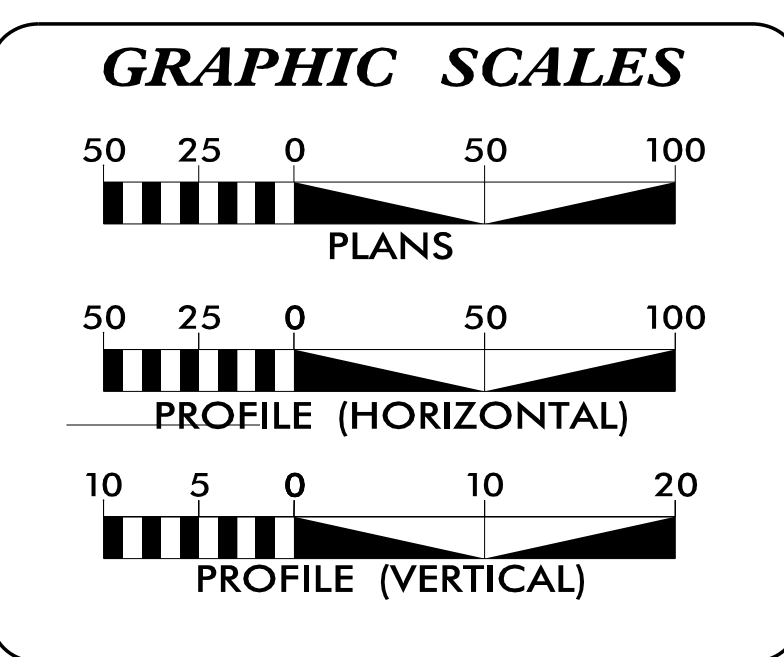
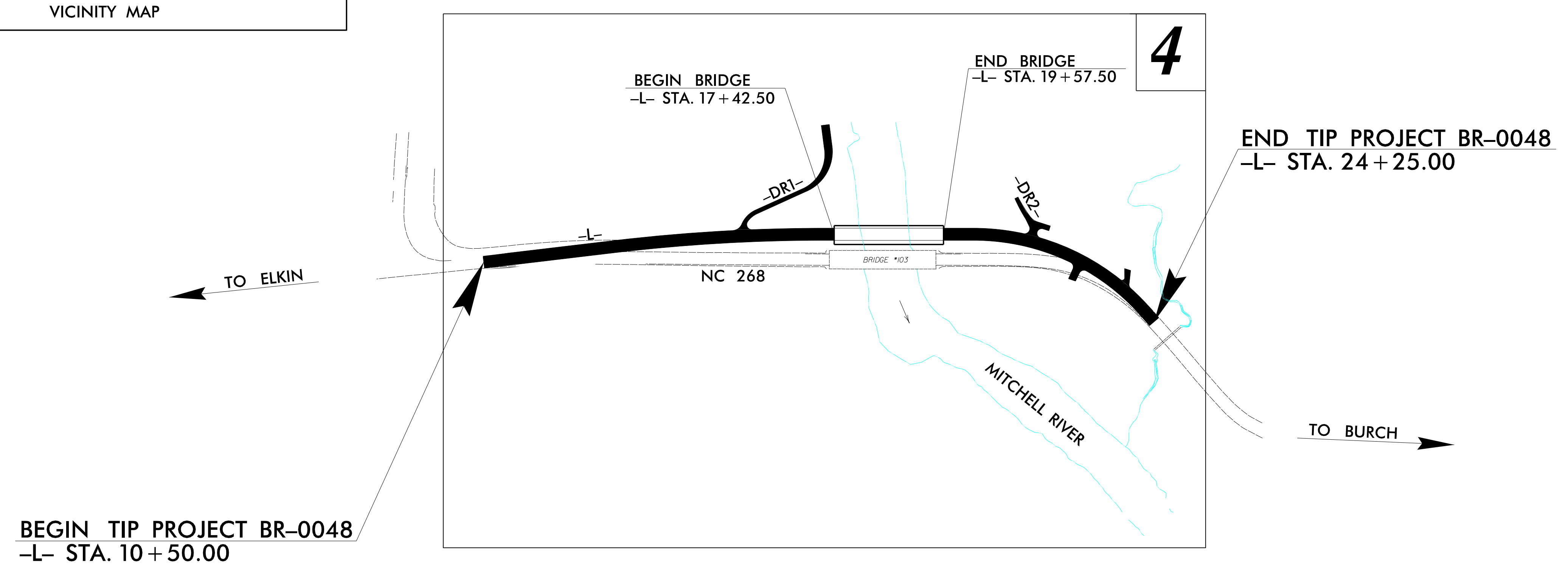
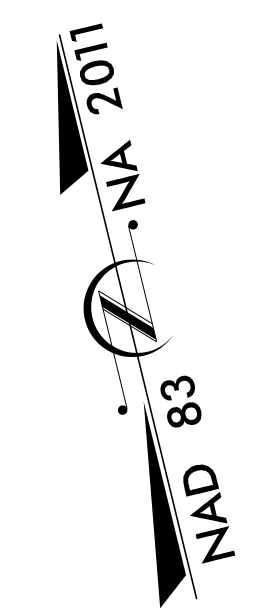
LOCATION: BRIDGE NO. 850103 ON NC 268  
OVER MITCHELL RIVER

TYPE OF WORK: UTILITY RELOCATION



T.I.P. NO.	SHEET NO.
BR-0048	UO-1

NOTE:  
ALL UTILITY WORK SHOWN ON THIS SHEET WILL BE DONE BY OTHERS. NO PAYMENT WILL BE MADE TO THE CONTRACTOR FOR UTILITY WORK SHOWN ON THIS SHEET.



SHEET NO.:	DESCRIPTION:
UO-1	TITLE SHEET
UO1B	STANDARD LEGEND SHEET
UO4	UBO PLAN SHEETS

UTILITY OWNERS WITH CONFLICTS	
(A) Power Transmission	- Duke Energy
(B) Power Distribution	- Duke Energy
(C) Communications	- Surry Telephone Membership Cooperative
(D) Communications	- Spectrum/Charter/TWC
(E) Gas Distribution	- Frontier Natural Gas Company

PREPARED IN THE OFFICE OF:

**ICE of CAROLINAS, PLLC**

ICE of Carolinas, PLLC  
4505 Falls of Neuse Road, Suite 110  
Raleigh, North Carolina 27609  
Phone: 803-822-0333  
License #: P-0999

GUS KRETSCHMER UTILITY PROJECT MANAGER  
TERESA MCCLUNG PROJECT UTILITY COORDINATOR  
XXXX PROJECT UTILITY XXXX

**DIVISION OF HIGHWAYS  
UTILITIES UNIT**  
1555 MAIL SERVICES CENTER  
RALEIGH NC 27699-1555  
PHONE (919) 707-6690  
FAX (919) 250-4151

MICHAEL BRIGHT UTILITIES REGIONAL ENGINEER  
DONALD HAMPTON UTILITIES ENGINEER  
AMY YORK UTILITIES AREA COORDINATOR  
GREG SEALY UTILITIES COORDINATOR

# STATE OF NORTH CAROLINA, DIVISION OF HIGHWAYS CONVENTIONAL PLAN SHEET SYMBOLS

## BOUNDARIES AND PROPERTY:

State Line	-----
County Line	-----
Township Line	-----
City Line	-----
Reservation Line	-----
Property Line	-----
Existing Iron Pin	○ EIP
Computed Property Corner	-----
Property Monument	□ ECM
Parcel/Sequence Number	① 23
Existing Fence Line	-x-x-x-
Proposed Woven Wire Fence	○
Proposed Chain Link Fence	□
Proposed Barbed Wire Fence	◇
Existing Wetland Boundary	--- WLB ---
Proposed Wetland Boundary	--- WLB ---
Existing Endangered Animal Boundary	--- EAB ---
Existing Endangered Plant Boundary	--- EPB ---
Existing Historic Property Boundary	--- HPB ---
Known Contamination Area: Soil	☠ s ☠
Potential Contamination Area: Soil	☠ s ☠
Known Contamination Area: Water	☠ w ☠
Potential Contamination Area: Water	☠ w ☠
Contaminated Site: Known or Potential	☠ ?

## BUILDINGS AND OTHER CULTURE:

Gas Pump Vent or U/G Tank Cap	○
Sign	○ S
Well	○ W
Small Mine	✕
Foundation	□
Area Outline	□
Cemetery	□
Building	□
School	□
Church	□
Dam	□

## HYDROLOGY:

Stream or Body of Water	-----
Hydro, Pool or Reservoir	-----
Jurisdictional Stream	--- JS ---
Buffer Zone 1	--- BZ 1 ---
Buffer Zone 2	--- BZ 2 ---
Flow Arrow	←
Disappearing Stream	→
Spring	○
Wetland	--- WLB ---
Proposed Lateral, Tail, Head Ditch	-----
False Sump	▽

## RAILROADS:

Standard Gauge	-----
RR Signal Milepost	○ MILEPOST 35
Switch	□ SWITCH
RR Abandoned	-----
RR Dismantled	-----

## RIGHT OF WAY & PROJECT CONTROL:

Secondary Horiz and Vert Control Point	◆
Primary Horiz Control Point	○
Primary Horiz and Vert Control Point	◆
Exist Permanent Easement Pin and Cap	◇
New Permanent Easement Pin and Cap	◆
Vertical Benchmark	▲
Existing Right of Way Marker	△
Existing Right of Way Line	-----
New Right of Way Line	○ R W
New Right of Way Line with Pin and Cap	○ R W ▲
New Right of Way Line with Concrete or Granite R/W Marker	▲ R W
New Control of Access Line with Concrete C/A Marker	▲ C A
Existing Control of Access	○ C A
New Control of Access	○ C A
Existing Easement Line	--- E ---
New Temporary Construction Easement	--- E ---
New Temporary Drainage Easement	--- TDE ---
New Permanent Drainage Easement	--- PDE ---
New Permanent Drainage / Utility Easement	--- DUE ---
New Permanent Utility Easement	--- PUE ---
New Temporary Utility Easement	--- TUE ---
New Aerial Utility Easement	--- AUE ---

## ROADS AND RELATED FEATURES:

Existing Edge of Pavement	-----
Existing Curb	-----
Proposed Slope Stakes Cut	--- C ---
Proposed Slope Stakes Fill	--- F ---
Proposed Curb Ramp	--- CR ---
Existing Metal Guardrail	--- T ---
Proposed Guardrail	--- T ---
Existing Cable Guiderail	--- T ---
Proposed Cable Guiderail	--- T ---
Equality Symbol	⊕
Pavement Removal	⊗

## VEGETATION:

Single Tree	☼
Single Shrub	☼

Note: Not to Scale

\*S.U.E. = Subsurface Utility Engineering

Hedge	-----
Woods Line	-----
Orchard	☼ ☼ ☼ ☼
Vineyard	--- Vineyard ---

## EXISTING STRUCTURES:

MAJOR:	
Bridge, Tunnel or Box Culvert	--- CONC ---
Bridge Wing Wall, Head Wall and End Wall	--- CONC WW ---
MINOR:	
Head and End Wall	--- CONC HW ---
Pipe Culvert	-----
Footbridge	--- ---
Drainage Box: Catch Basin, DI or JB	□ CB
Paved Ditch Gutter	-----
Storm Sewer Manhole	○ S
Storm Sewer	--- S ---

## UTILITIES:

POWER:	
Existing Power Pole	●
Proposed Power Pole	○
Existing Joint Use Pole	●
Proposed Joint Use Pole	○
Power Manhole	○ P
Power Line Tower	⊗
Power Transformer	⊗
U/G Power Cable Hand Hole	○
H-Frame Pole	● ●
U/G Power Line LOS B (S.U.E.*)	--- P ---
U/G Power Line LOS C (S.U.E.*)	--- P ---
U/G Power Line LOS D (S.U.E.*)	--- P ---

## TELEPHONE:

Existing Telephone Pole	●
Proposed Telephone Pole	○
Telephone Manhole	○ T
Telephone Pedestal	□ T
Telephone Cell Tower	⊗
U/G Telephone Cable Hand Hole	○ T
U/G Telephone Cable LOS B (S.U.E.*)	--- T ---
U/G Telephone Cable LOS C (S.U.E.*)	--- T ---
U/G Telephone Cable LOS D (S.U.E.*)	--- T ---
U/G Telephone Conduit LOS B (S.U.E.*)	--- TC ---
U/G Telephone Conduit LOS C (S.U.E.*)	--- TC ---
U/G Telephone Conduit LOS D (S.U.E.*)	--- TC ---
U/G Fiber Optics Cable LOS B (S.U.E.*)	--- T FO ---
U/G Fiber Optics Cable LOS C (S.U.E.*)	--- T FO ---
U/G Fiber Optics Cable LOS D (S.U.E.*)	--- T FO ---

## WATER:

Water Manhole	○ W
Water Meter	○
Water Valve	⊗
Water Hydrant	○
U/G Water Line LOS B (S.U.E.*)	--- W ---
U/G Water Line LOS C (S.U.E.*)	--- W ---
U/G Water Line LOS D (S.U.E.*)	--- W ---
Above Ground Water Line	--- A/G Water ---

## TV:

TV Pedestal	□
TV Tower	⊗
U/G TV Cable Hand Hole	○ TV
U/G TV Cable LOS B (S.U.E.*)	--- TV ---
U/G TV Cable LOS C (S.U.E.*)	--- TV ---
U/G TV Cable LOS D (S.U.E.*)	--- TV ---
U/G Fiber Optic Cable LOS B (S.U.E.*)	--- TV FO ---
U/G Fiber Optic Cable LOS C (S.U.E.*)	--- TV FO ---
U/G Fiber Optic Cable LOS D (S.U.E.*)	--- TV FO ---

## GAS:

Gas Valve	◇
Gas Meter	◇
U/G Gas Line LOS B (S.U.E.*)	--- G ---
U/G Gas Line LOS C (S.U.E.*)	--- G ---
U/G Gas Line LOS D (S.U.E.*)	--- G ---
Above Ground Gas Line	--- A/G Gas ---

## SANITARY SEWER:

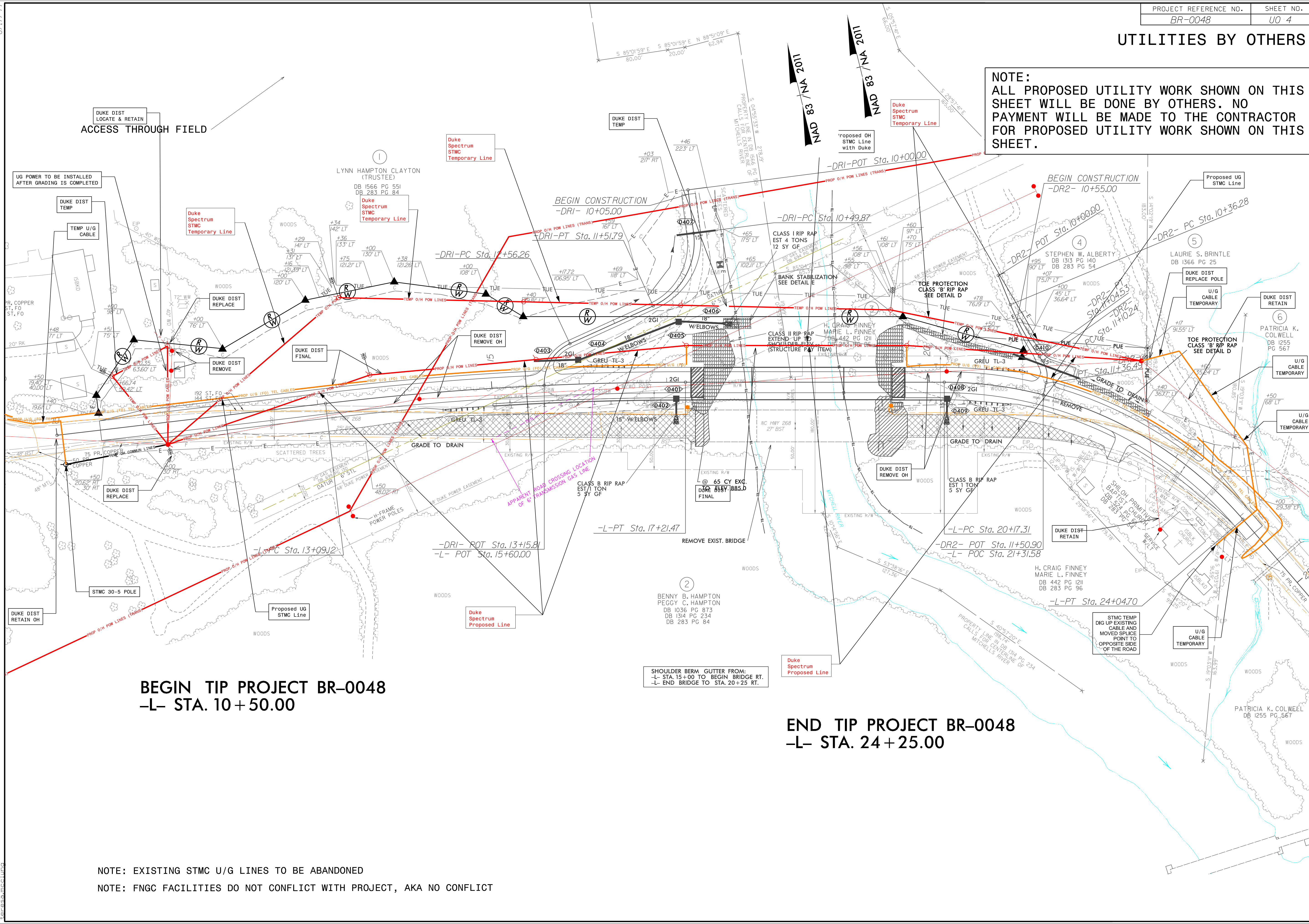
Sanitary Sewer Manhole	⊕
Sanitary Sewer Cleanout	⊕
U/G Sanitary Sewer Line	--- SS ---
Above Ground Sanitary Sewer	--- A/G Sanitary Sewer ---
SS Forced Main Line LOS B (S.U.E.*)	--- FSS ---
SS Forced Main Line LOS C (S.U.E.*)	--- FSS ---
SS Forced Main Line LOS D (S.U.E.*)	--- FSS ---

## MISCELLANEOUS:

Utility Pole	●
Utility Pole with Base	□
Utility Located Object	○
Utility Traffic Signal Box	□
Utility Unknown U/G Line LOS B (S.U.E.*)	--- 7UTL ---
U/G Tank; Water, Gas, Oil	□
Underground Storage Tank, Approx. Loc.	--- UST ---
A/G Tank; Water, Gas, Oil	□
Geoenvironmental Boring	⊗
U/G Test Hole LOS A (S.U.E.*)	○
Abandoned According to Utility Records	AATUR
End of Information	E.O.I.

# UTILITIES BY OTHERS

**NOTE:**  
 ALL PROPOSED UTILITY WORK SHOWN ON THIS SHEET WILL BE DONE BY OTHERS. NO PAYMENT WILL BE MADE TO THE CONTRACTOR FOR PROPOSED UTILITY WORK SHOWN ON THIS SHEET.



8/17/99  
 4/12/2022  
 6/6/2018  
 TIC\_PSH\_sht04\_ICE.dgn  
 teresa.mccallum

**BEGIN TIP PROJECT BR-0048**  
 -L- STA. 10+50.00

**END TIP PROJECT BR-0048**  
 -L- STA. 24+25.00

NOTE: EXISTING STMC U/G LINES TO BE ABANDONED  
 NOTE: FNGC FACILITIES DO NOT CONFLICT WITH PROJECT, AKA NO CONFLICT

SHOULDER BERM GUTTER FROM:  
 -L- STA. 15+00 TO BEGIN BRIDGE RT.  
 -L- END BRIDGE TO STA. 20+25 RT.