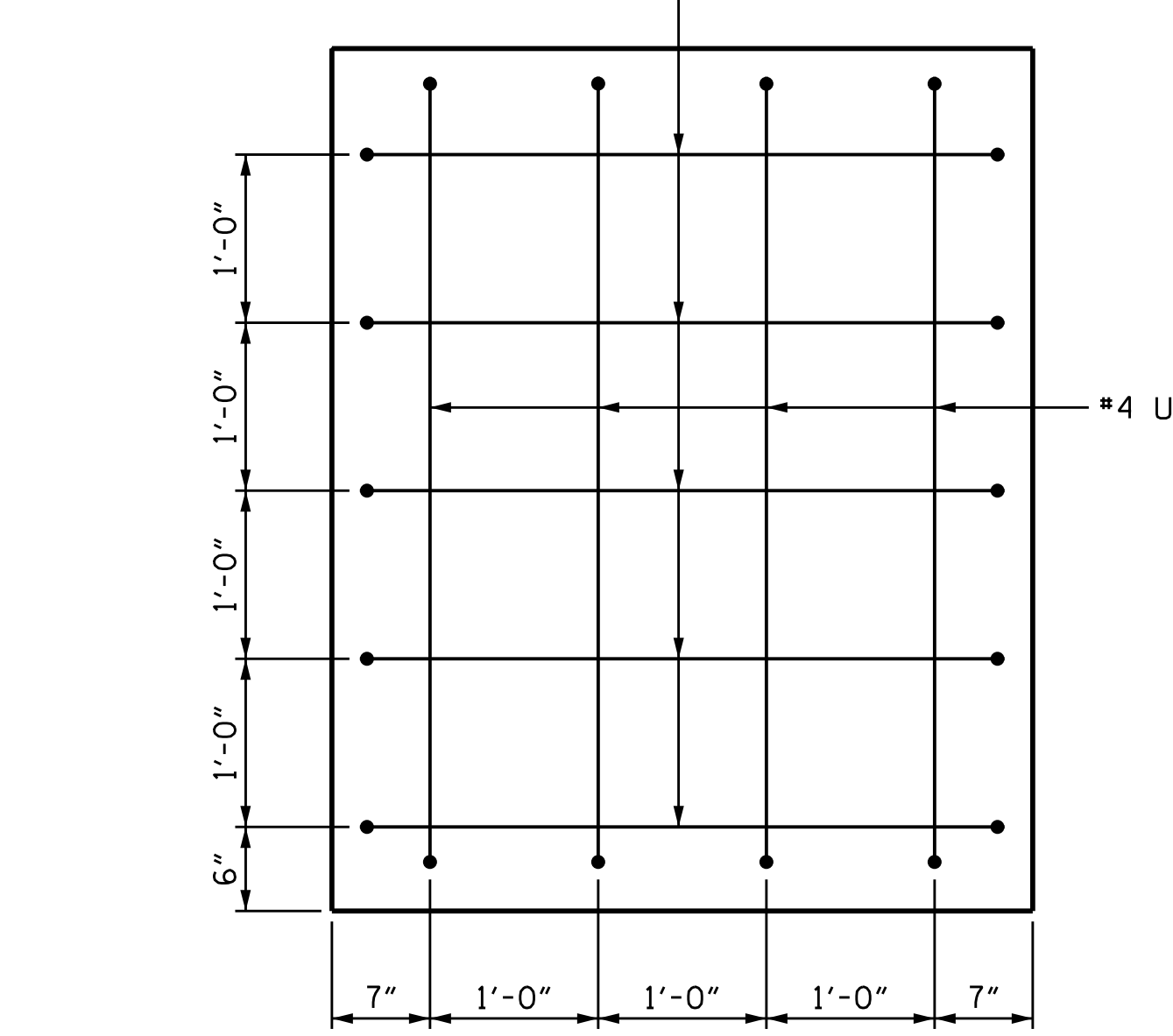
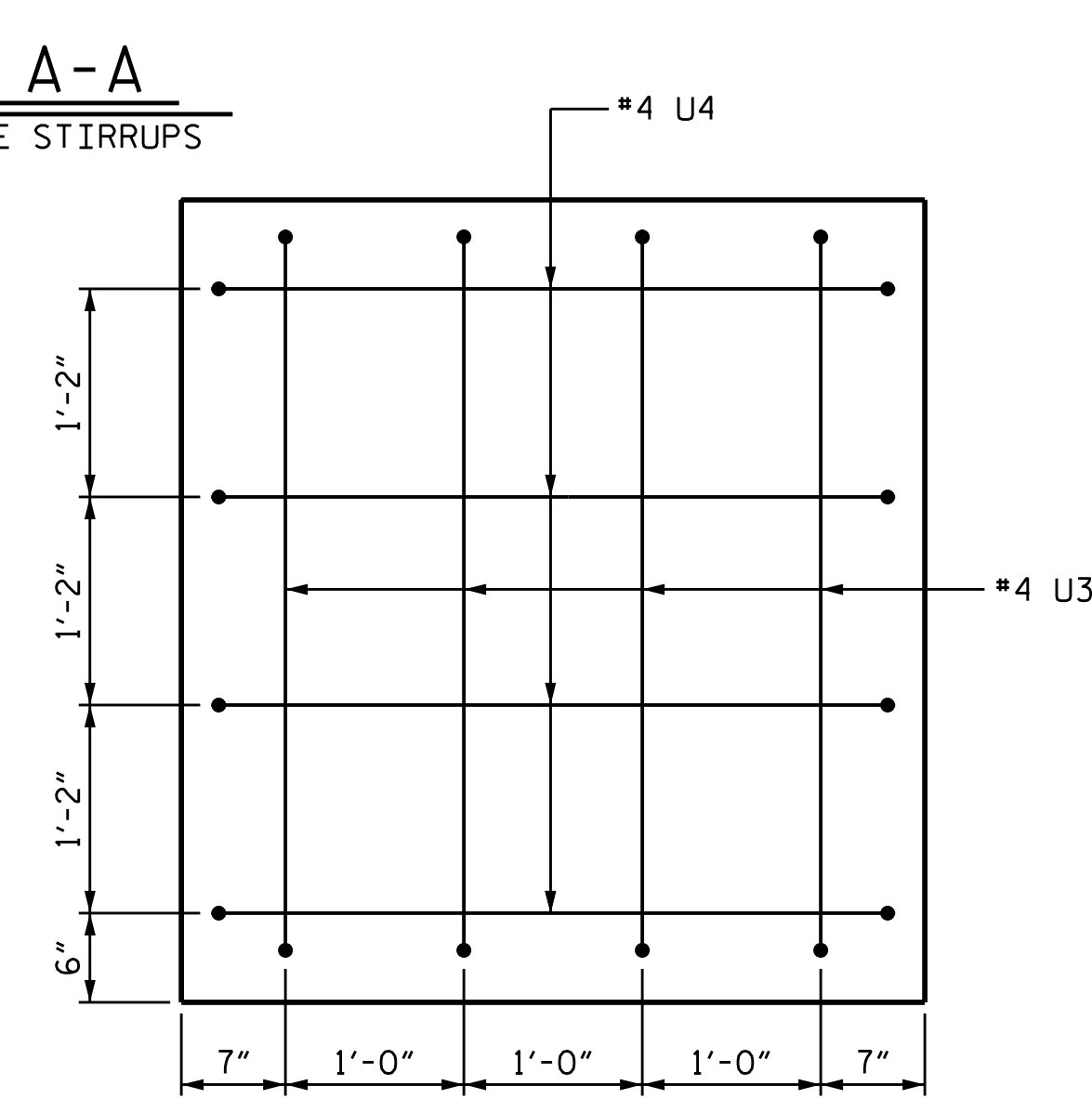
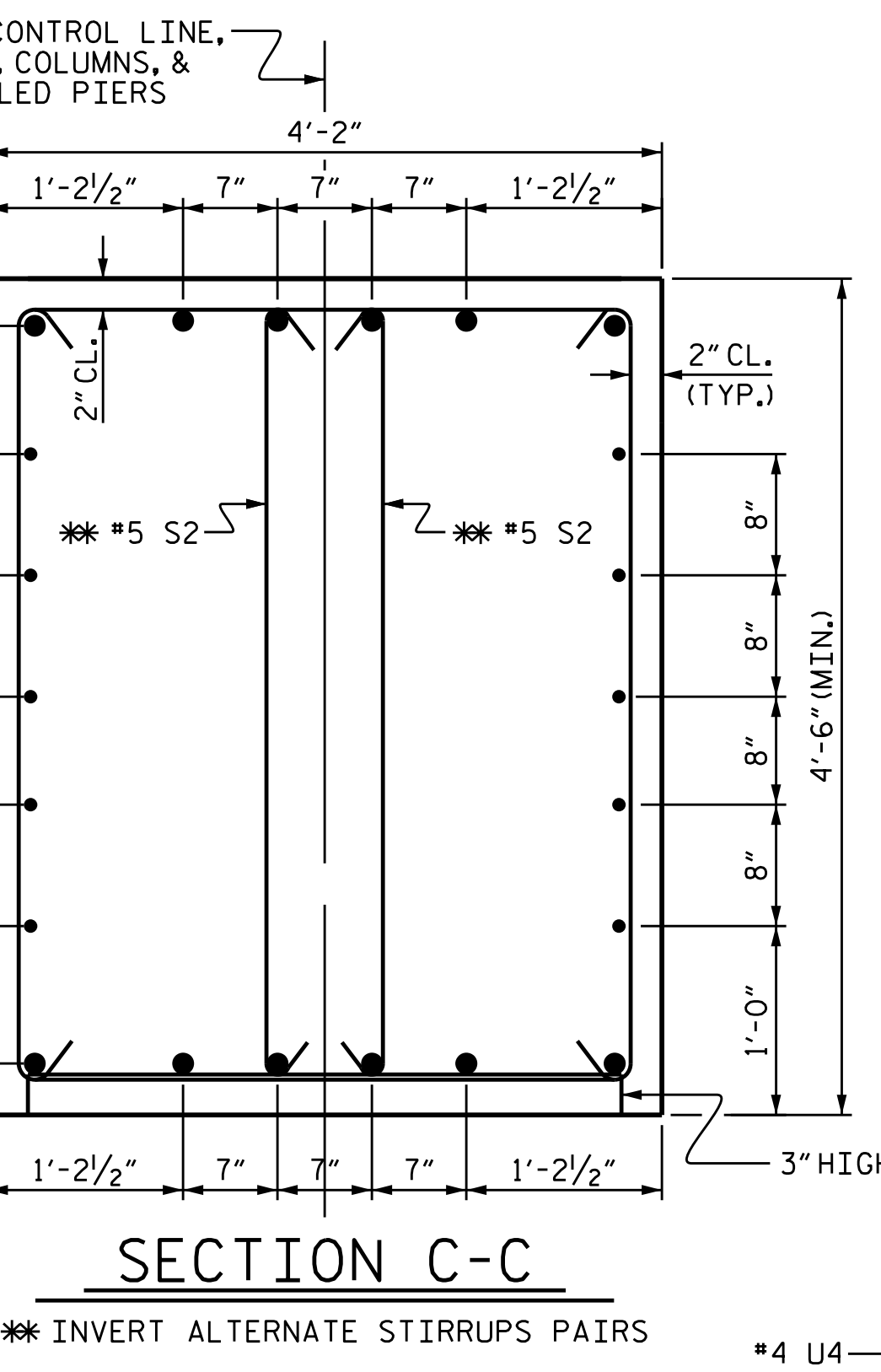
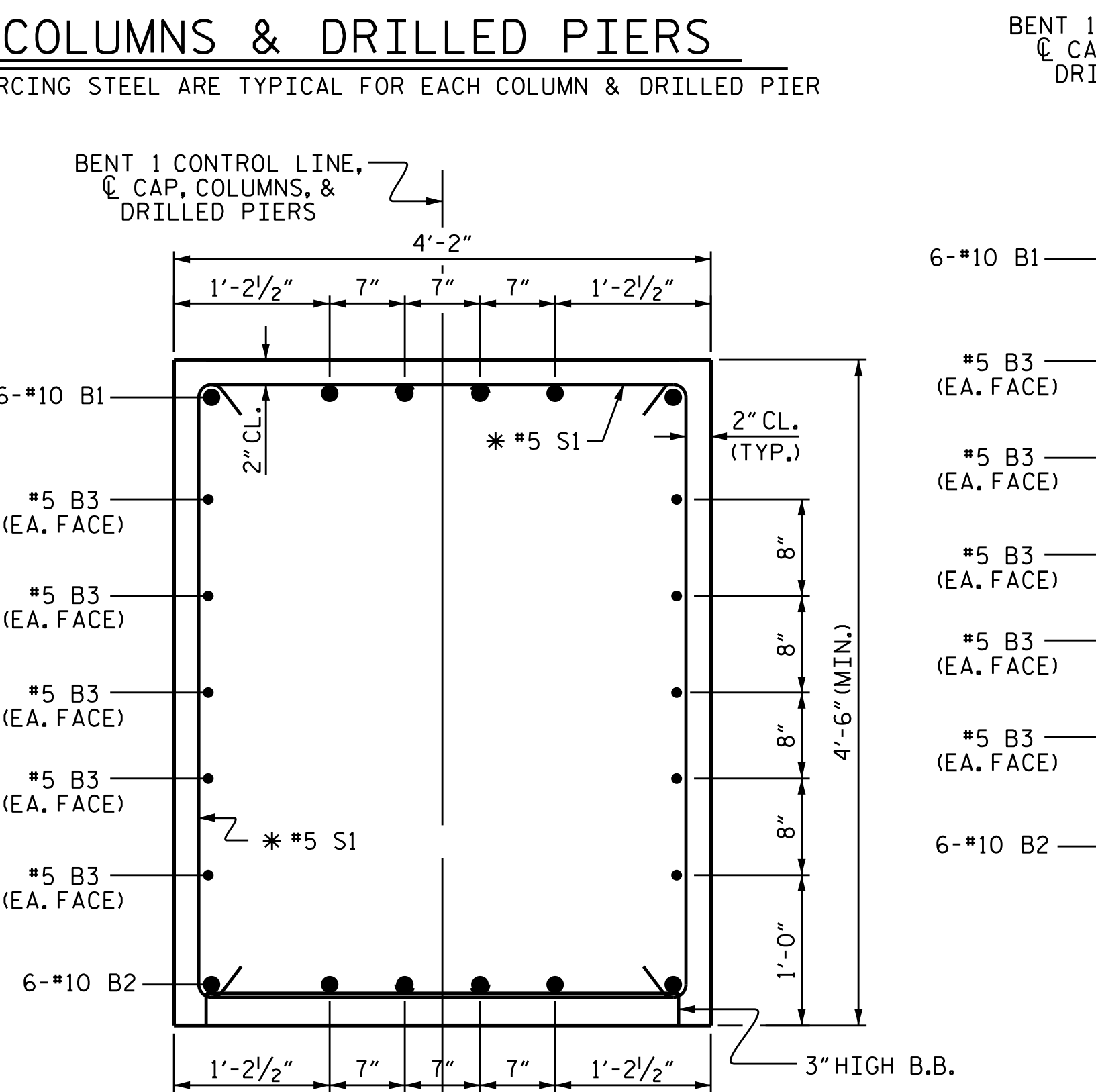
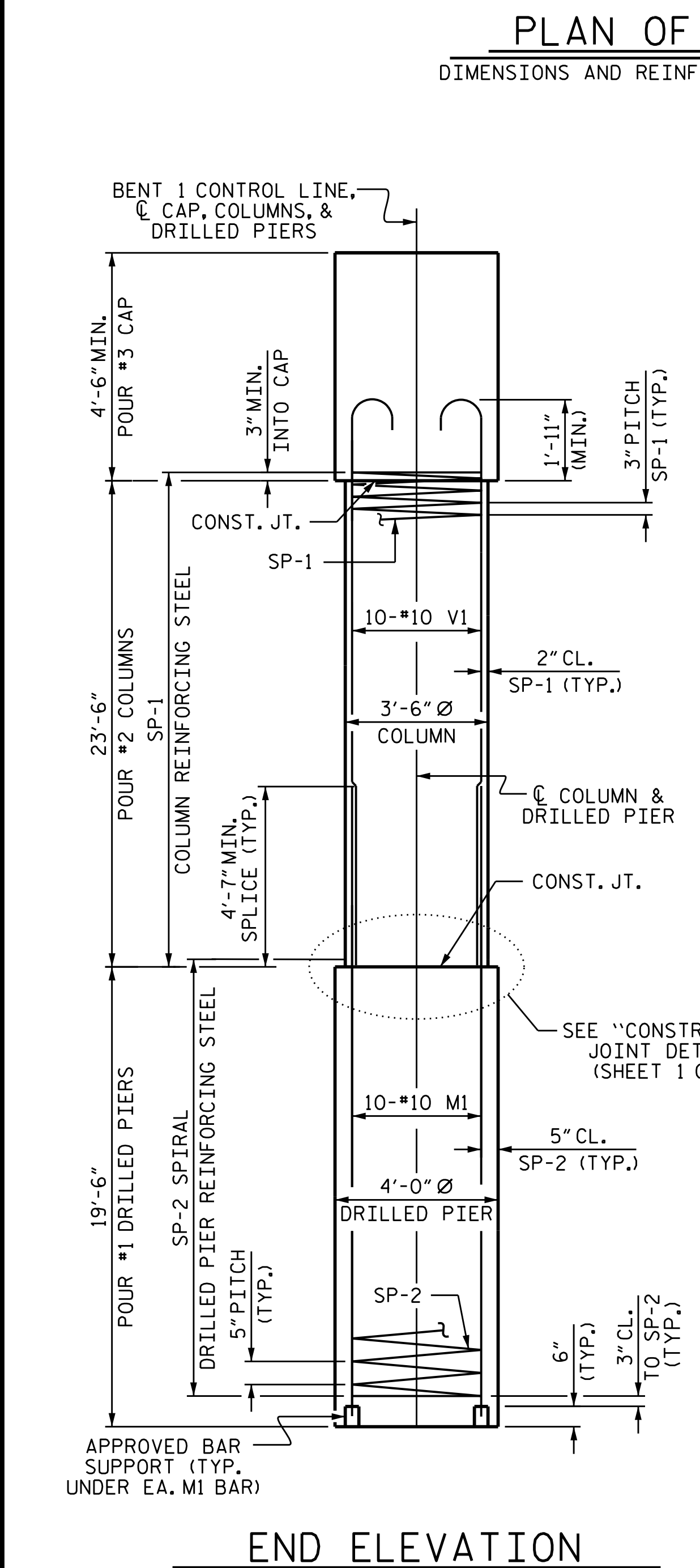


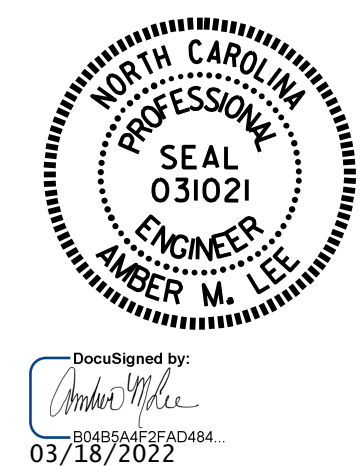
BILL OF MATERIAL					
BAR	NO.	SIZE	TYPE	LENGTH	WEIGHT
B1	6	#10	1	38'-5"	992
B2	6	#10	STR	35'-9"	923
B3	10	#5	STR	35'-9"	373
B4	6	#4	STR	14'-7"	58
M1	30	#10	STR	26'-11"	3475
S1	40	#5	2	13'-0"	542
S2	28	#5	2	11'-5"	333
U1	39	#4	3	6'-10"	178
U2	4	#4	3	7'-9"	21
U3	4	#4	3	7'-1"	19
U4	9	#4	3	6'-8"	40
V1	30	#10	4	26'-10"	3464
REINFORCING STEEL					LBS. 10,418
SP-1	3	*	5	946'-2"	1896
SP-2	3	**	6	462'-0"	1446
SPIRAL COLUMN REINFORCING STEEL					LBS. 3342
* THE SP-1 SPIRAL REINFORCING STEEL SHALL BE W20 OR D-20 COLD DRAWN WIRE OR #4 PLAIN OR DEFORMED BAR.					
** THE SP-2 SPIRAL REINFORCING STEEL SHALL BE W31 OR D-31 COLD DRAWN WIRE OR #5 PLAIN OR DEFORMED BAR.					
CLASS A CONCRETE					
POUR #3 (CAP)				C.Y.	26.5
POUR #2 (COLUMNS)				C.Y.	25.1
TOTAL CLASS A CONCRETE				C.Y.	51.6
DRILLED PIER QUANTITIES					
DRILLED PIER CONCRETE					
POUR #1 (DRILLED PIERS)				C.Y.	27.2
4'-0" Ø DRILLED PIERS IN SOIL				LIN. FT.	25.5
4'-0" Ø DRILLED PIERS NOT IN SOIL				LIN. FT.	33.0
PERMANENT STEEL CASING FOR 4'-0" Ø DRILLED PIER				LIN. FT.	26.8
CSL TESTING				EA.	1
CSL TUBES				LIN. FT.	252



DRAWN BY : M.G. SHAIKH DATE : 12/2020  
 CHECKED BY : K. PUROHIT DATE : 02/2021  
 DESIGN ENGINEER OF RECORD : J.A.T. DATE : 07/2020

3/17/2022  
 R:\Structures\FINAL PLANS OBD\400.051.BR-0048.SMU. B1.0025.850103.dgn  
 amlee

DOCUMENT NOT CONSIDERED FINAL UNLESS ALL SIGNATURES COMPLETED



PROJECT NO. BR-0048  
 SURRY COUNTY  
 STATION: 18+50.00 -L-  
 SHEET 2 OF 2

REVISIONS						SHEET NO.
NO.	BY:	DATE:	NO.	BY:	DATE:	S-25
1			3			TOTAL SHEETS
2			4			33