

215'-0" (FILL FACE TO FILL FACE)

105'-0" (W.P. #2 TO W.P. #3)

366-#5 A1 @ 7" CTS. (TOP OF SLAB)
366-#5 A2 @ 7" CTS. (BOTTOM OF SLAB)

36'-6" (TYP.)

36'-6" (TYP.)

4-#5 B7 @ 10" CTS. (BOTT. OF SLAB) (TYP. EA. OVERHANG)

4-#5 B7 @ 10" CTS. (BOTT. OF SLAB) (TYP. EA. OVERHANG)

10-#5 B7 @ 10" CTS. (BOTT. OF SLAB) (TYP. EA. BAY) (SEE DETAIL C)

10-#5 B7 @ 10" CTS. (BOTT. OF SLAB) (TYP. EA. BAY) (SEE DETAIL C)

9-#5 B6 @ 10" CTS. (BOTT. OF SLAB) (4 BAR RUNS) (TYP. EA. BAY)

CL GDR. B1

CL GDR. B2

CL GDR. B3

CL GDR. B4

INTERMEDIATE STEEL DIAPHRAGM (TYP.)

INTERMEDIATE STEEL DIAPHRAGM (TYP.)

TRANSVERSE CONST. JT.

TRANSVERSE CONST. JT.

TRANSVERSE CONST. JT.

TRANSVERSE CONST. JT.

W.P. # 2

90°-00'-00" (TYP.)

W.P. # 3

53-#5 B4 @ 9" CTS. (TOP OF SLAB)

54-#5 B3 @ 9" CTS. (TOP OF SLAB)

27-#4 B5 @ 1'-6" CTS. (TOP OF SLAB)

54-#4 B3 @ 9" CTS. (TOP OF SLAB)

53-#4 B4 @ 9" CTS. (TOP OF SLAB)

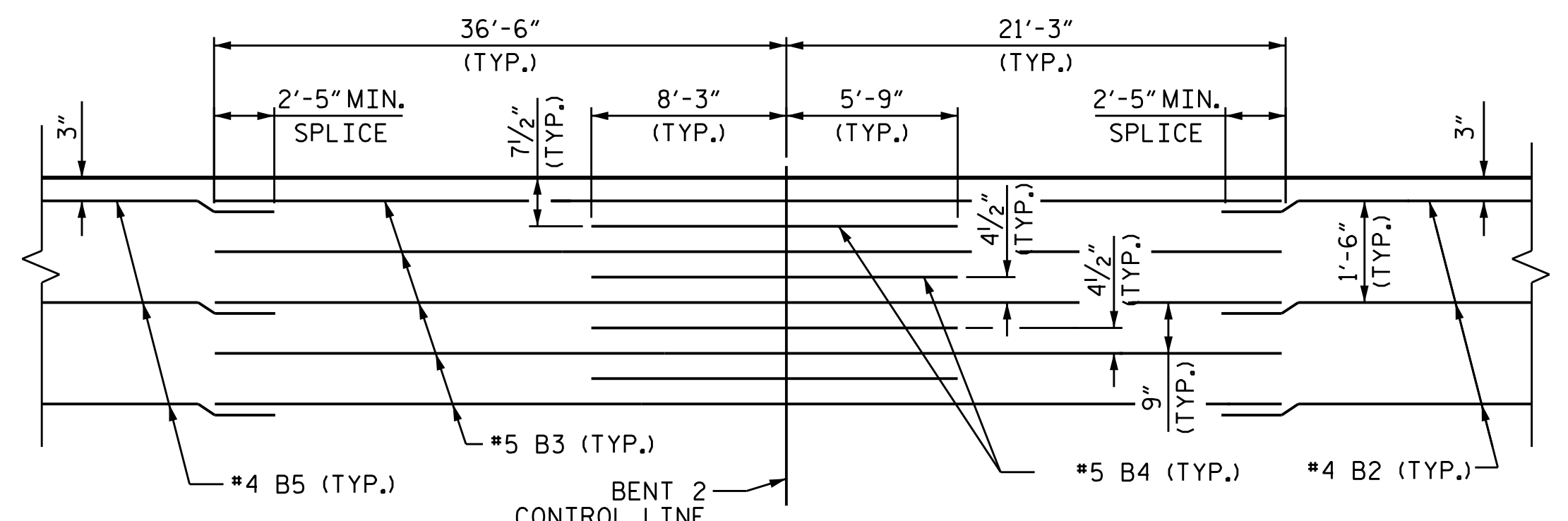
40'-3" (OUT TO OUT)
37'-0" (CLEAR ROADWAY)
20'-0"

FOR CONTRACTION JT. DETAILS SEE SHEET S-07.

FOR CONTRACTION JT. DETAILS SEE SHEET S-07.

PLAN OF SPAN B

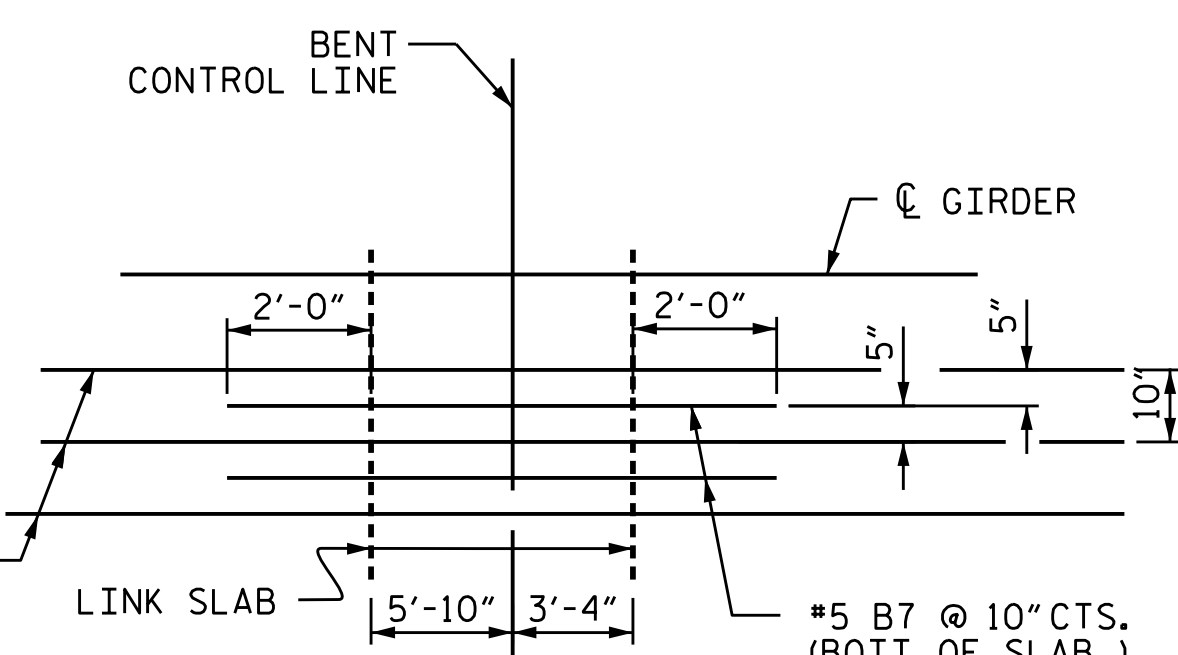
FOR INTERMEDIATE STEEL DIAPHRAGMS, SEE "INTERMEDIATE STEEL DIAPHRAGMS" SHEET.
FOR TOP OF SLAB REINFORCING AT BENT, SEE DETAIL B AT BENT 1 & 2.
FOR BOTTOM OF SLAB REINFORCING AT BENT, SEE DETAIL C AT BENT 1 & 2.



DETAIL B AT BENT 1 & 2

(BENT 2 SHOWN, FOR BENT 1 SEE SHEET S-08)

DRAWN BY: M. G. SHAIKH DATE: 12/2020
CHECKED BY: J. A. TILLMAN DATE: 02/2021
DESIGN ENGINEER OF RECORD: E.T.C. DATE: 08/2020



DETAIL C AT BENT 1 & 2

(BENT 2 SHOWN, FOR BENT 1 SEE SHEET S-08)

PROJECT NO. BR-0048
SURRY COUNTY
STATION: 18+50.00 -L-

SHEET 2 OF 3



STATE OF NORTH CAROLINA
DEPARTMENT OF TRANSPORTATION
RALEIGH

PLAN OF SPAN B

| REVISIONS | | | | | | SHEET NO. |
|-----------|-----|-------|-----|-----|-------|--------------|
| NO. | BY: | DATE: | NO. | BY: | DATE: | S-09 |
| 1 | | | 3 | | | TOTAL SHEETS |
| 2 | | | 4 | | | 33 |

DOCUMENT NOT CONSIDERED FINAL UNLESS ALL SIGNATURES COMPLETED