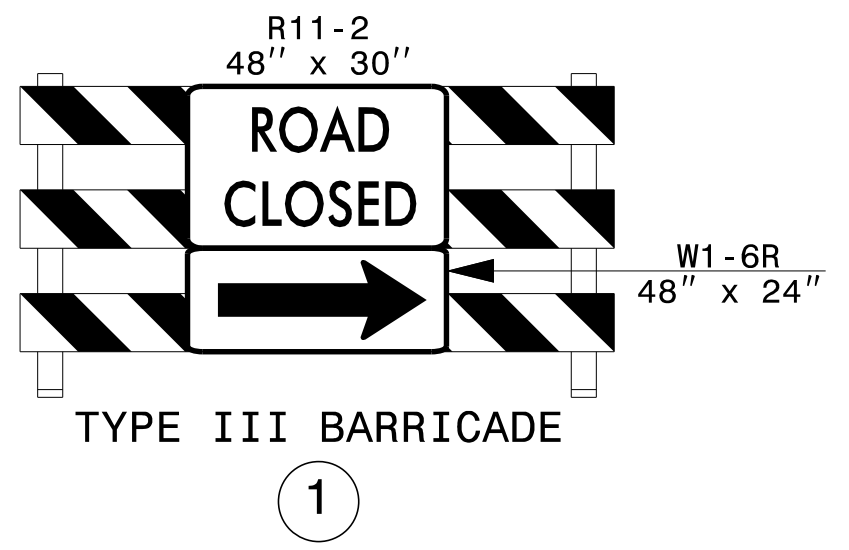


TEMPORARY PAVEMENT MARKING LEGEND	
C1(IV)	- COLD APPLIED PLASTIC (TYPE 4) - WHITE EDGELINE - (4")
C13(IV)	- COLD APPLIED PLASTIC (TYPE 4) - YELLOW DOUBLE CENTER - (4")
P1	- PAINT - WHITE EDGELINE - (4")
P13	- PAINT - YELLOW DOUBLE CENTER - (4")
MH	- MARKER - TEMPORARY RAISED (YELLOW & YELLOW)

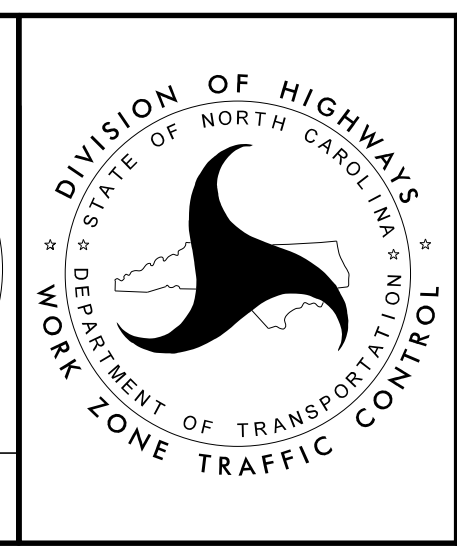
REFER TO RSD NOS. 1205.01, 1205.02, 1205.05, 1205.08, 1205.09, 1205.12, 1250.01, AND 1251.01 FOR PLACEMENT OF TEMPORARY PAVEMENT MARKINGS AND MARKERS UNLESS NOTED OTHERWISE.



APPROVED: *Don A. Parker*
4004828261841D

DATE: 03/03/2022

**DOCUMENT NOT CONSIDERED FINAL
UNLESS ALL SIGNATURES COMPLETED**



PHASE II DETAILS

3/3/2022
 O:\divisions\BR0048\TrafficControl\TCP\BR0048_TC_TMP_8.dgn
 User: mackillu