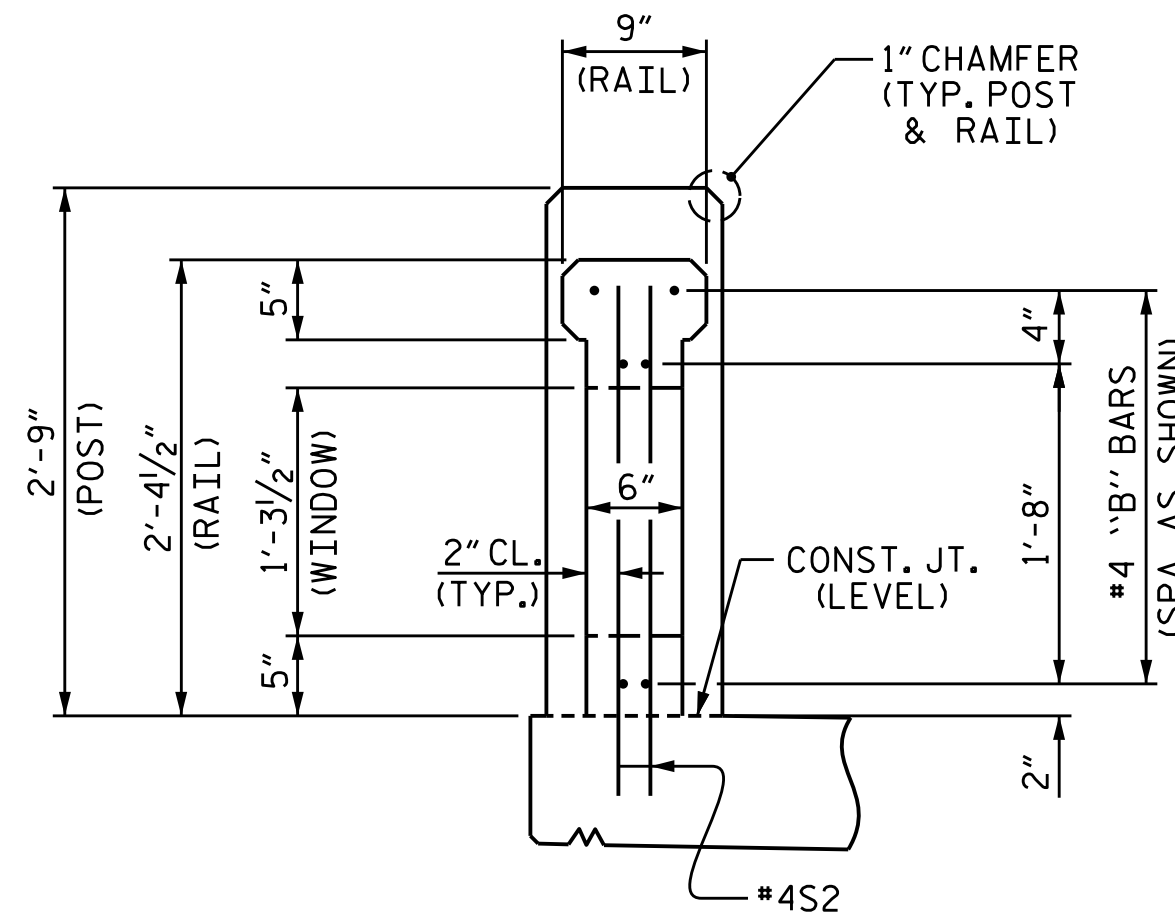
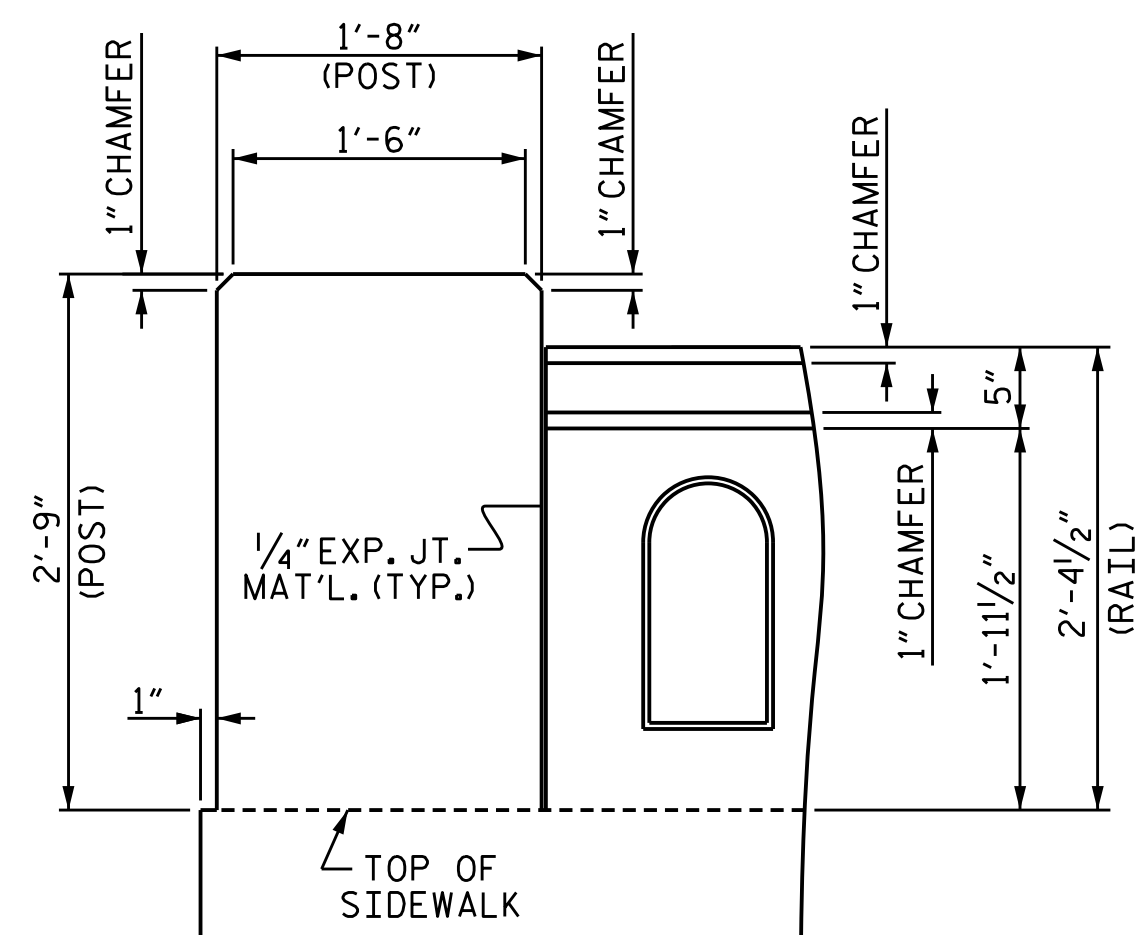


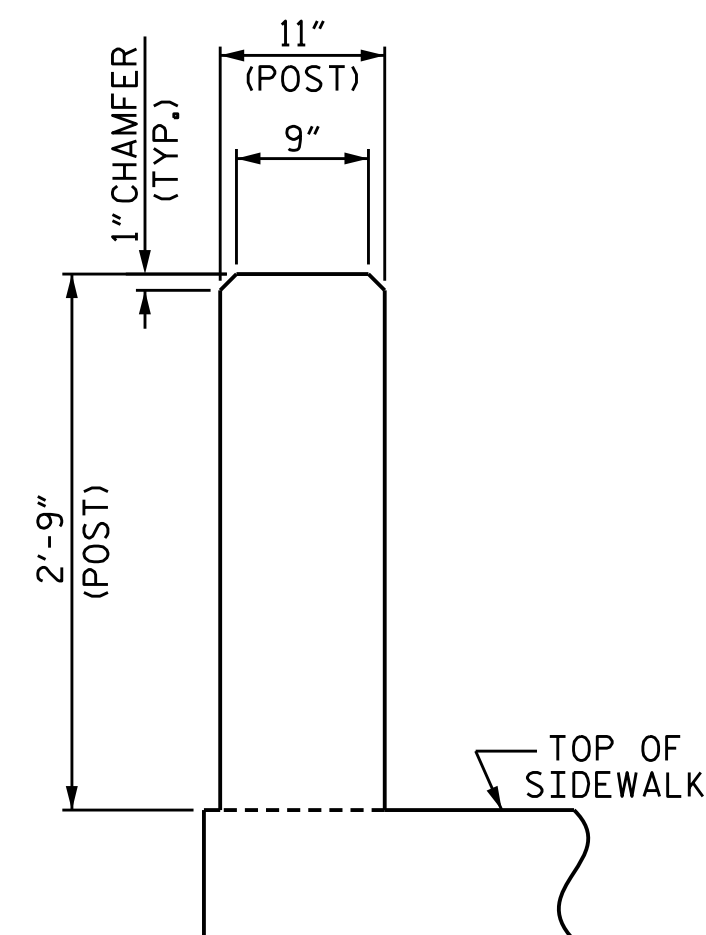
SECTION THRU POST



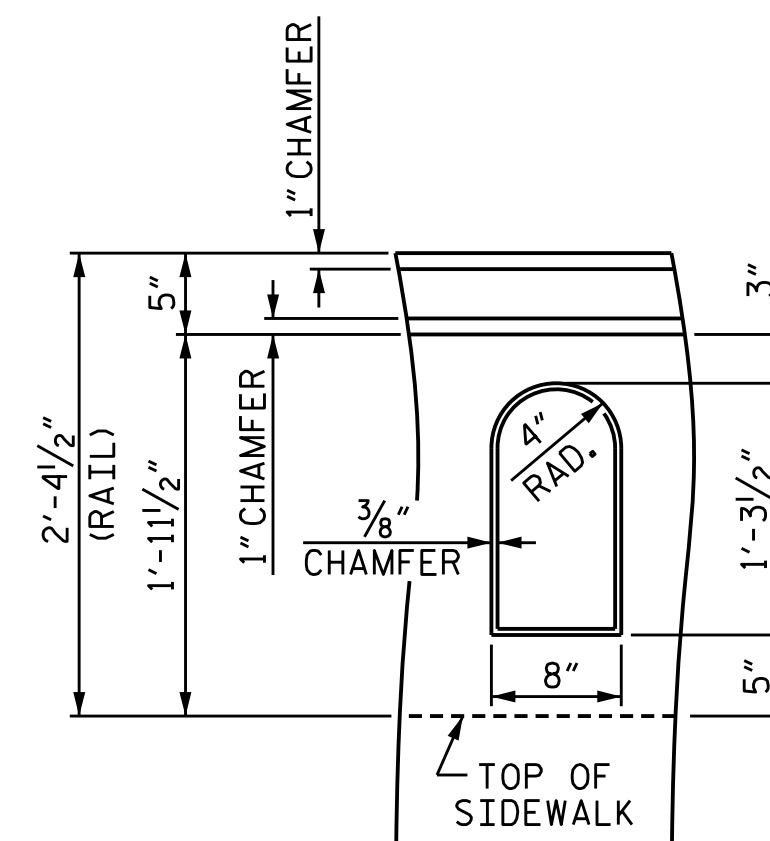
SECTION THRU RAIL



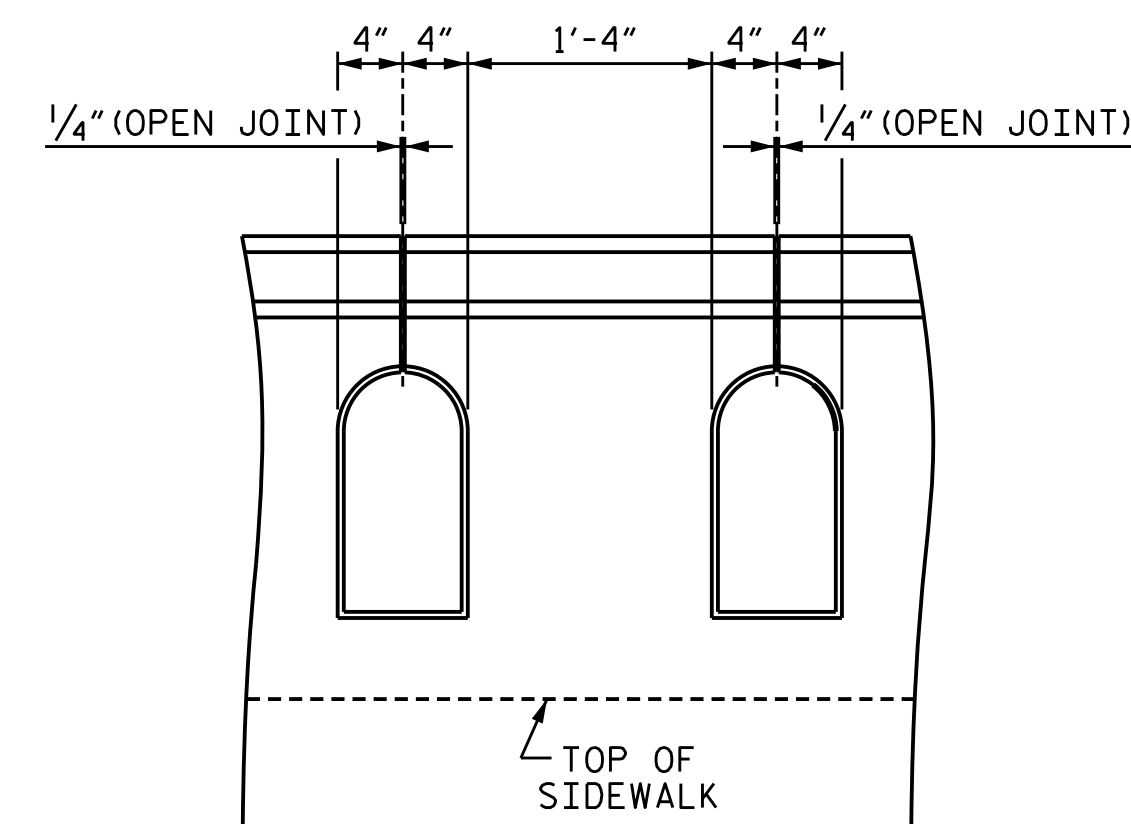
POST & RAIL DETAIL



SECTION A-A



WINDOW DETAIL



WINDOW DETAIL @ 1/4" OPEN JOINT

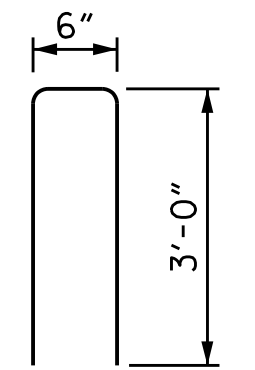
NOTES

ALL PARTS OF THE CLASSIC CONCRETE BRIDGE RAIL INCLUDING BUT NOT LIMITED TO THE REINFORCING STEEL, CLASS AA CONCRETE SHALL BE INCLUDED IN THE UNIT PRICE BID PER LINEAR FOOT FOR "CLASSIC CONCRETE BRIDGE RAIL". NO SEPARATE MEASUREMENT OR PAYMENT WILL BE MADE FOR THESE ITEMS.

CLASSIC CONCRETE BRIDGE RAIL SHALL NOT BE CAST UNTIL ALL SLAB CONCRETE IN THE UNIT HAS BEEN CAST AND HAS REACHED MINIMUM COMPRESSIVE STRENGTH OF 3000 PSI.

ALL REINFORCING STEEL IN CLASSIC CONCRETE BRIDGE RAIL SHALL BE EPOXY COATED. FOR CLASSIC CONCRETE BRIDGE RAIL, SEE SPECIAL PROVISIONS.

BAR TYPES



1

ALL BAR DIMENSIONS ARE OUT TO OUT

BILL OF MATERIAL

BAR	NO.	SIZE	TYPE	LENGTH	WEIGHT
* B6	24	#4	STR	16'-10"	270
* B7	12	#4	STR	1'-7"	13
* B8	40	#4	STR	1'-4"	36
* S1	12	#4	1	6'-6"	52
* S2	240	#4	STR	5'-3"	842

* EPOXY COATED REINFORCING STEEL 1213 LBS.

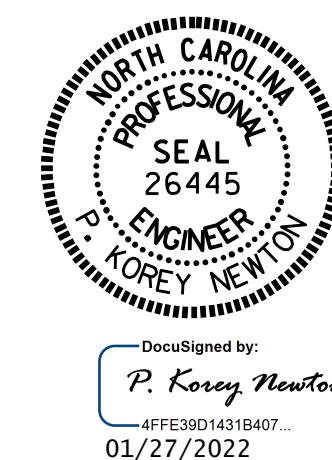
CLASS AA CONCRETE	
CONCRETE POST	0.6 CU. YDS.
CONCRETE RAIL	2.7 CU. YDS.
TOTAL	3.3 CU. YDS.

CONCRETE POST	6.67 LIN. FT.
CONCRETE RAIL	72.75 LIN. FT.
TOTAL	79.42 LIN. FT.

DRAWN BY : M.K. BEARD DATE : 11/18/21
 CHECKED BY : O.T. NGUYEN DATE : 12/2021
 DESIGN ENGINEER OF RECORD: D. SHACKELFORD DATE : 12/2021

1/24/2022
 R:\Structures\Plans\Bridg.060028\403.153.15BPR56.SMU.CBR2.077.060028.dgn
 pknewton

DOCUMENT NOT CONSIDERED
 FINAL UNLESS ALL
 SIGNATURES COMPLETED



PROJECT NO. 15BPR.56
 BEAUFORT COUNTY
 BRIDGE NO. 060028

SHEET 2 OF 2

STATE OF NORTH CAROLINA
 DEPARTMENT OF TRANSPORTATION
 RALEIGH

SUPERSTRUCTURE
 CLASSIC CONCRETE
 BRIDGE RAIL
 (SPAN 25)

REVISIONS						SHEET NO.
NO.	BY:	DATE:	NO.	BY:	DATE:	
1			3			S3-77
2			4			TOTAL SHEETS 78