

**NOTES:**

REPAIR LOCATIONS AND ESTIMATE OF QUANTITIES ARE GIVEN WITH THE BEST INFORMATION AVAILABLE. IF ADDITIONAL REPAIRS NOT SHOWN ON THE DRAWINGS ARE DEEMED NECESSARY BY THE INSPECTOR OR ENGINEER, THE CONTRACTOR SHALL NOTE ON THE DRAWINGS THE APPROXIMATE LOCATION AND DESCRIPTION OF THE REPAIRS AND ADJUST THE ACTUAL QUANTITIES ENTERED INTO THE REPAIR QUANTITY TABLE.

FOR CAP AND COLUMN REPAIR DETAILS, SEE "TYPICAL CAP AND COLUMN REPAIR DETAILS" SHEET.

FOR SHOTCRETE REPAIRS, SEE SPECIAL PROVISIONS.

FOR CONCRETE REPAIRS, SEE SPECIAL PROVISIONS.

FOR EPOXY RESIN INJECTION, SEE SPECIAL PROVISIONS.

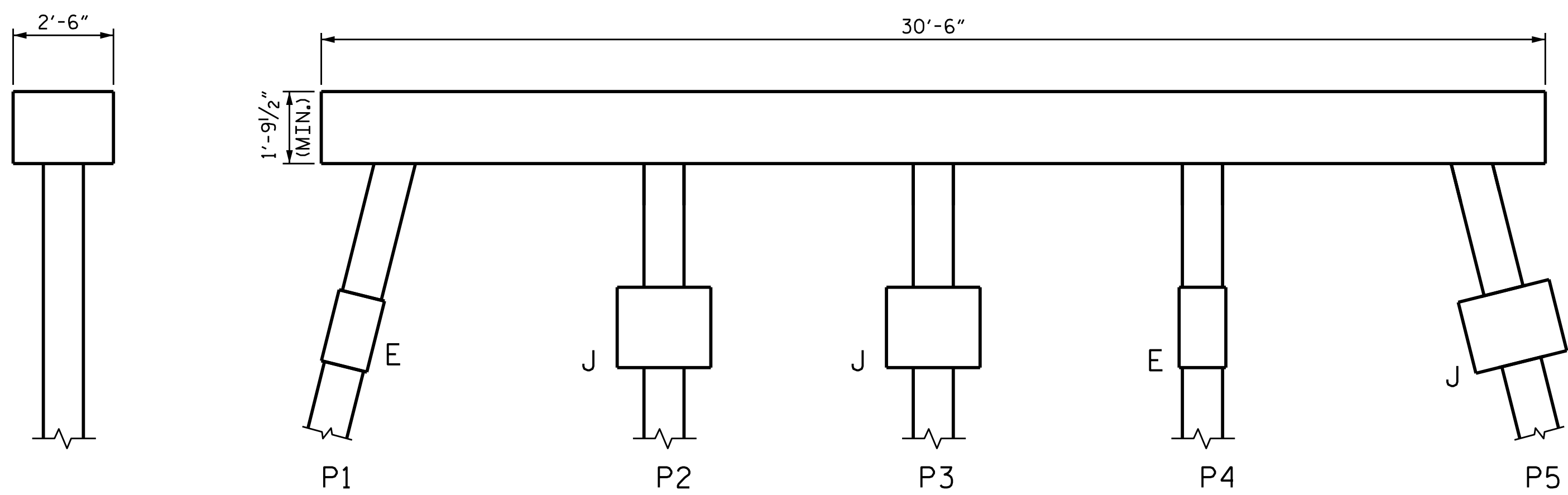
CONCRETE REPAIRS MAY BE SUBSTITUTED IN LIEU OF SHOTCRETE REPAIRS WITH THE APPROVAL OF THE ENGINEER.

-  CONCRETE REPAIR
-  SHOTCRETE REPAIR
- ERI EPOXY RESIN INJECTION
- EXISTING
- J - JACKET
- E - ENCAPSULATION
- P - PILE

**REPAIR QUANTITY TABLE**

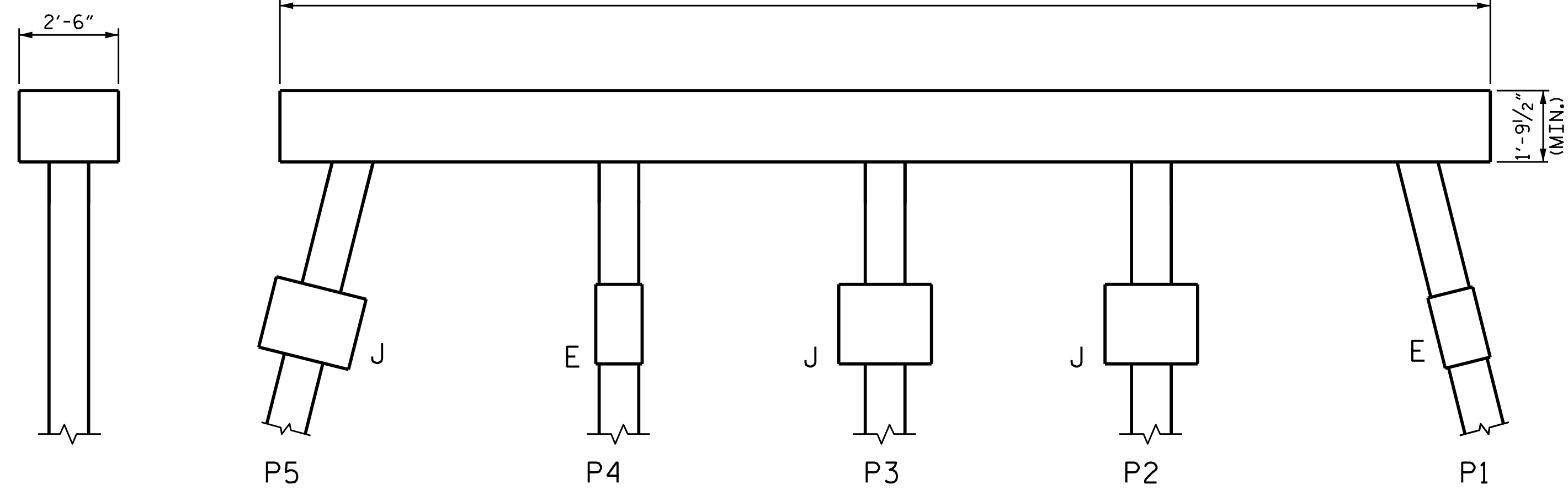
| BENT 30               | QUANTITIES |           |         |           |
|-----------------------|------------|-----------|---------|-----------|
|                       | ESTIMATE   |           | ACTUAL  |           |
| SHOTCRETE REPAIR      | AREA SF    | VOLUME CF | AREA SF | VOLUME CF |
| CAP (VERTICAL FACE)   | 0.0        | 0.0       |         |           |
| CAP (HORIZONTAL FACE) | 0.0        | 0.0       |         |           |
| COLUMN                | 0.0        | 0.0       |         |           |
| CONCRETE REPAIR       |            |           |         |           |
| CAP (VERTICAL FACE)   | 0.0        | 0.0       |         |           |
| CAP (HORIZONTAL FACE) | 0.0        | 0.0       |         |           |
| COLUMN                | 0.0        | 0.0       |         |           |
| EPOXY RESIN INJECTION |            | LF        |         | LF        |
| CAP                   |            | 0.0       |         |           |
| COLUMN                |            | 0.0       |         |           |

VALUES IN CHART REPRESENT ESTIMATED REPAIR TOTALS AFTER REMOVAL OF UNSOUND CONCRETE, MINIMUM OF 1" BEHIND REBAR AND MINIMUM 2" CLEARANCE TO SAWCUT. SEE "TYPICAL CAP AND COLUMN REPAIR DETAILS" SHEET.



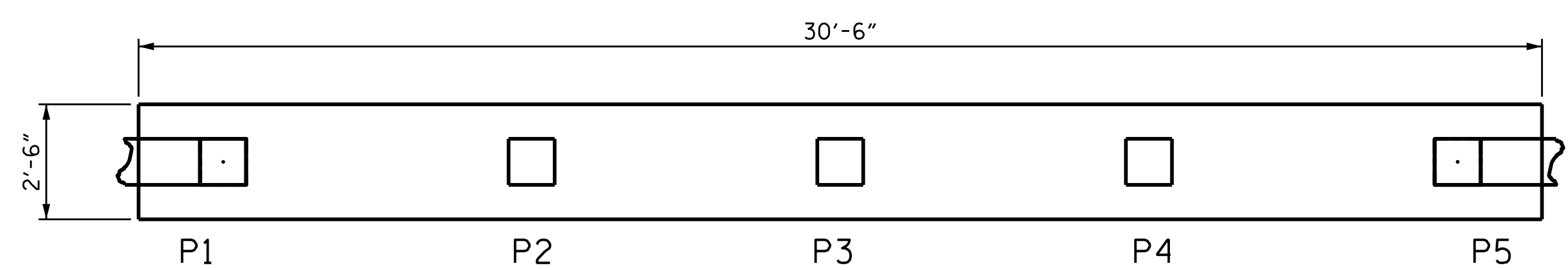
NORTH END

ELEVATION  
(WEST SIDE)



SOUTH END

ELEVATION  
(EAST SIDE)

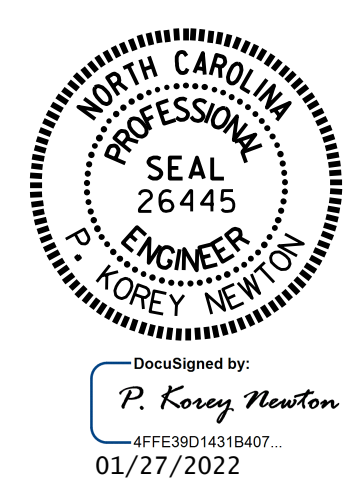


BOTTOM OF CAP

SPAN 30  
SPAN 31

PROJECT NO. 15BPR.56  
BEAUFORT COUNTY  
 BRIDGE NO. 060028

SHEET 30 OF 48



STATE OF NORTH CAROLINA  
 DEPARTMENT OF TRANSPORTATION  
 RALEIGH  
**SUBSTRUCTURE**  
**BENT 30 REPAIR**

DRAWN BY : S. T. SANDOR DATE : .05/2021  
 CHECKED BY : W. C. SMITH DATE : .06/2021

DOCUMENT NOT CONSIDERED  
 FINAL UNLESS ALL  
 SIGNATURES COMPLETED

| REVISIONS |     |       |     |     |       | SHEET NO.       |
|-----------|-----|-------|-----|-----|-------|-----------------|
| NO.       | BY: | DATE: | NO. | BY: | DATE: |                 |
| 1         |     |       | 3   |     |       | S3-48           |
| 2         |     |       | 4   |     |       | TOTAL SHEETS 78 |