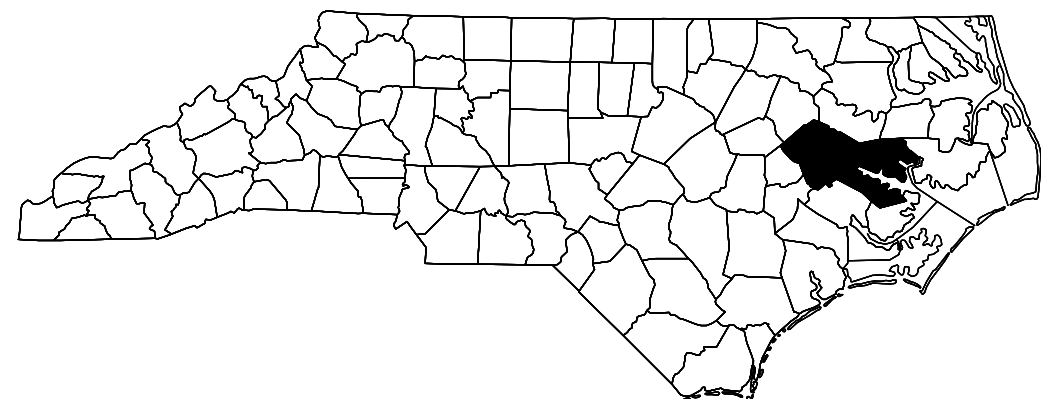


STATE OF NORTH CAROLINA
DIVISION OF HIGHWAYS

BEAUFORT & PITT COUNTIES

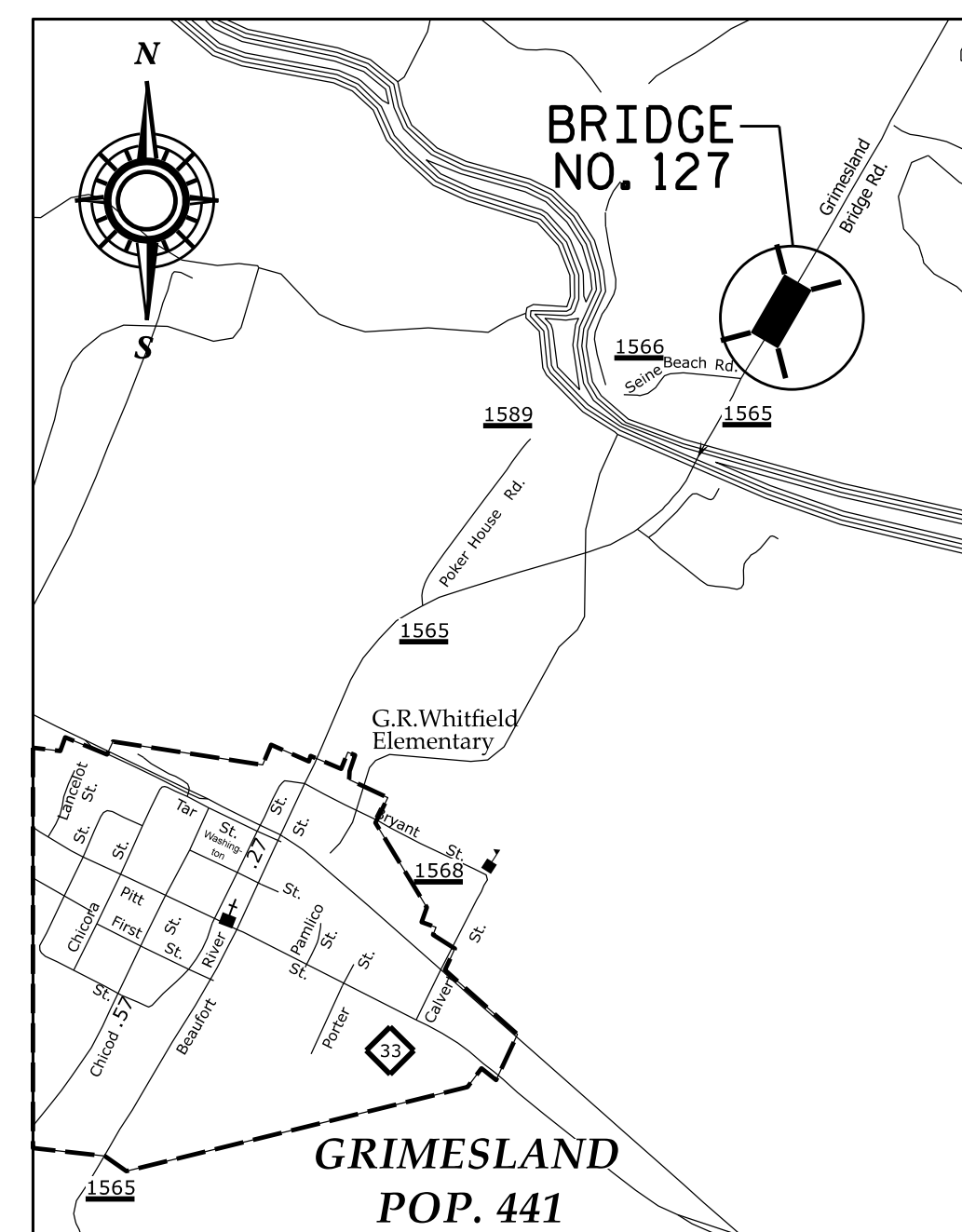
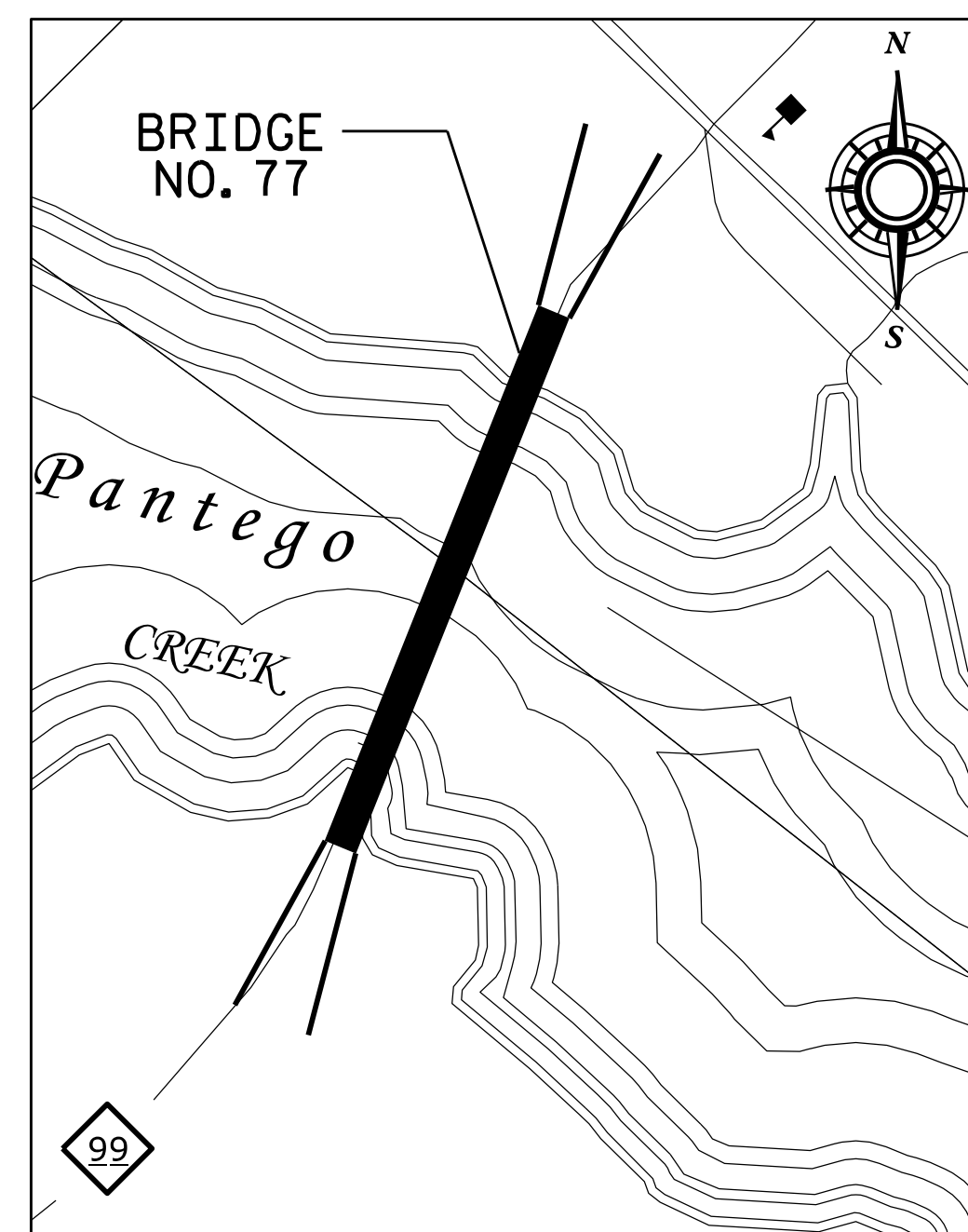
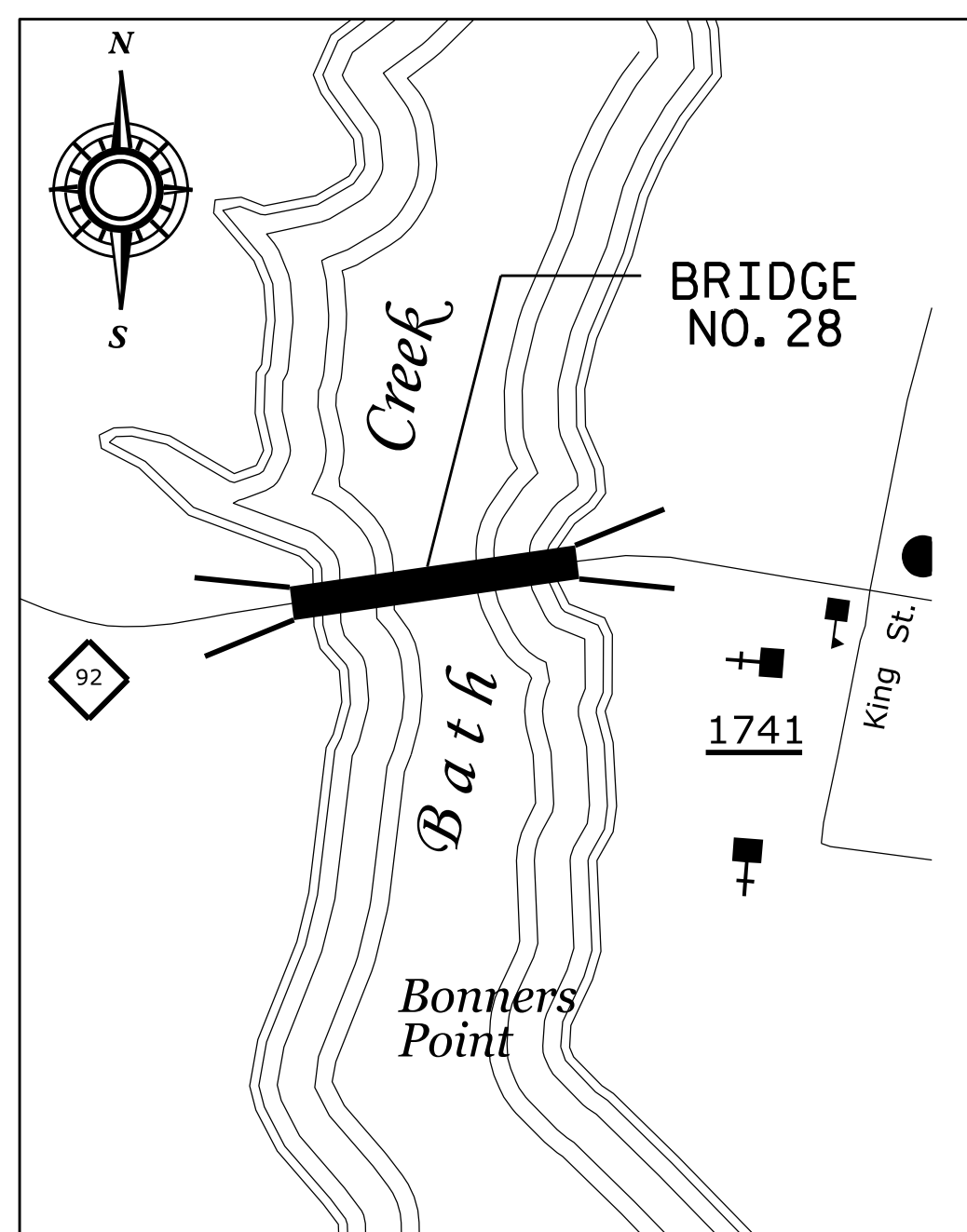
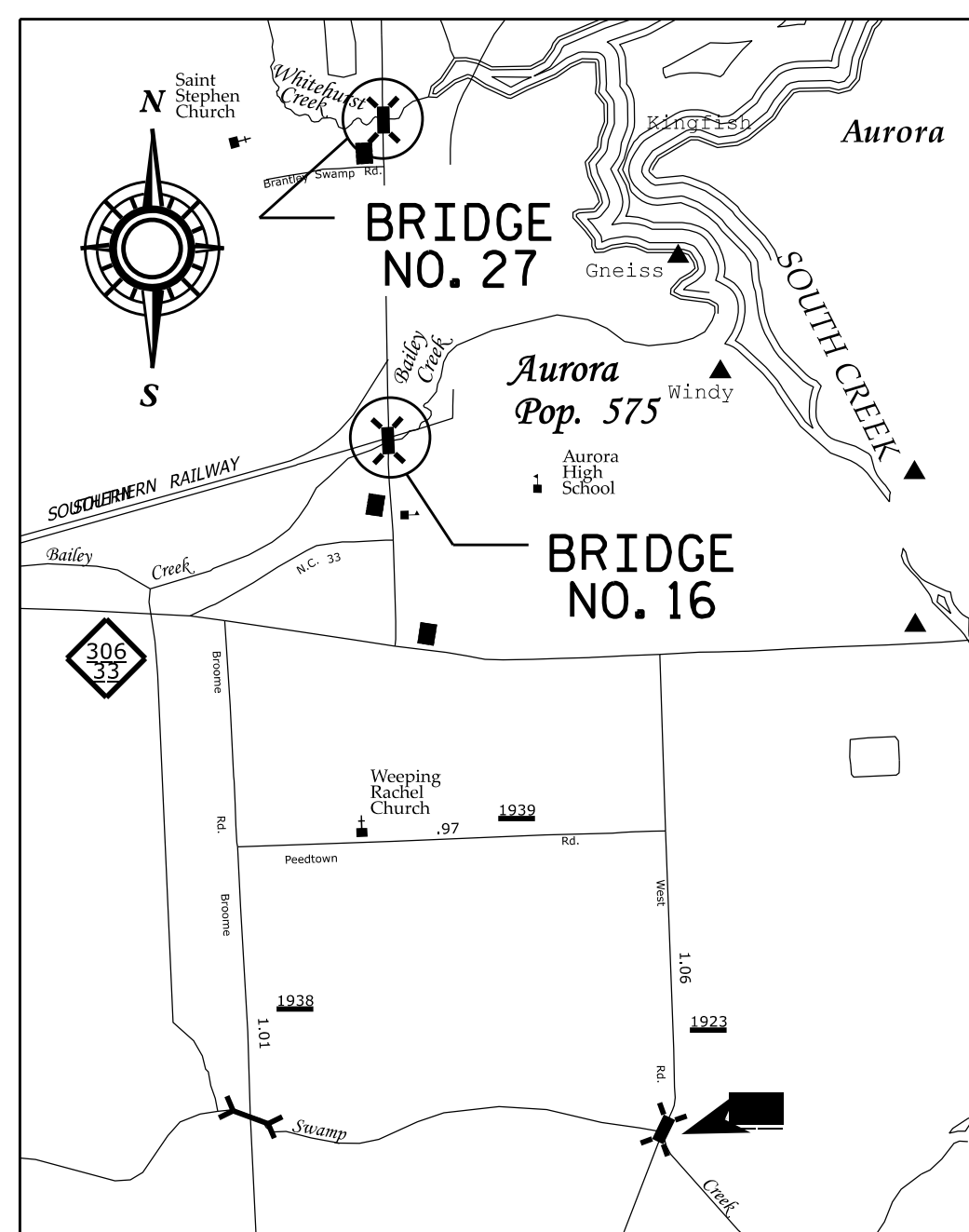
STATE	STATE PROJECT REFERENCE NO.	SHEET NO.	TOTAL SHEETS
N.C.	15BPR.56	1	
STATE PROJ. NO.	F.A. PROJ. NO.	DESCRIPTION	
15BPR.56		P.E.	
15BPR.56		CONST.	



LOCATION: BEAUFORT CO.: BRIDGE #060016 ON NC 306 OVER BAILEY CREEK.
BRIDGE #060027 ON NC 306 OVER WHITEHURST CREEK.
BRIDGE #060028 ON NC 92 OVER BATH CREEK.
BRIDGE #060077 ON NC 99 OVER PANTEGO CREEK.

PITT CO.: BRIDGE #730127 ON SR 1565 OVER TAR RIVER.

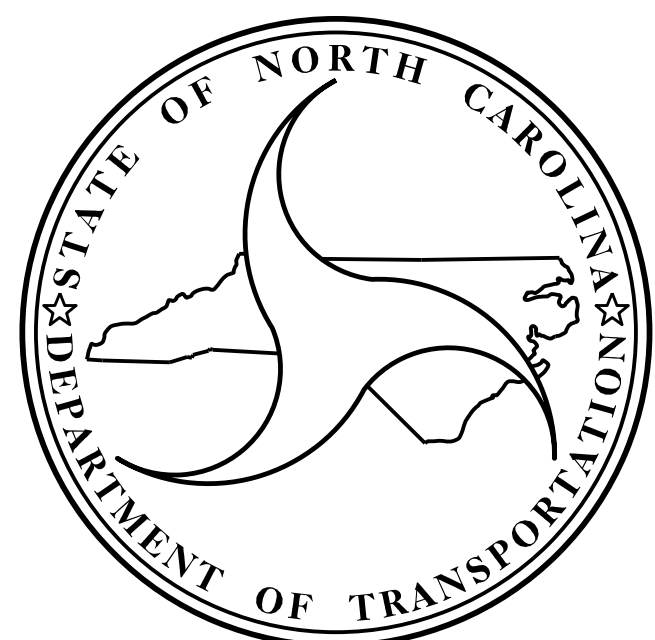
TYPE OF WORK: CONCRETE BRIDGE DECK REHABILITATION BY SCARIFICATION, SHOTBLASTING AND PLACEMENT OF POLYMER CONCRETE OVERLAY; RECONSTRUCTION OF BRIDGE DECK JOINTS AND SEALS; SHOTBLASTING AND SILANE DECK TREATMENT; EPOXY OVERLAY; SUBSTRUCTURE CONCRETE REPAIRS WITH SHOTCRETE AND EPOXY RESIN INJECTION; REPLACEMENT OF STEEL BRIDGE SPAN.



VICINITY MAP

PROJECT: 15BPR.56

CONTRACT NO: C204459



DESIGN DATA

BRIDGE #16 ADT 2020 = 4,300
BRIDGE #27 ADT 2020 = 2,900
BRIDGE #28 ADT 2020 = 3,400
BRIDGE #77 ADT 2020 = 4,500
BRIDGE #127 ADT 2019 = 4,100

PROJECT LENGTH

BRIDGE #16 = 0.017 MILE
BRIDGE #27 = 0.025 MILE
BRIDGE #28 = 0.199 MILE
BRIDGE #77 = 0.635 MILE
BRIDGE #127 = 0.372 MILE

Prepared in the Office of:
DIVISION OF HIGHWAYS
STRUCTURES MANAGEMENT UNIT
1000 BIRCH RIDGE DR.
RALEIGH, N.C. 27610

2018 STANDARD SPECIFICATIONS

LETTING DATE :

May 17, 2022

Kristy W. Alford, P.E.
PROJECT ENGINEER

P. Korey Newton, P.E.
PROJECT DESIGN ENGINEER