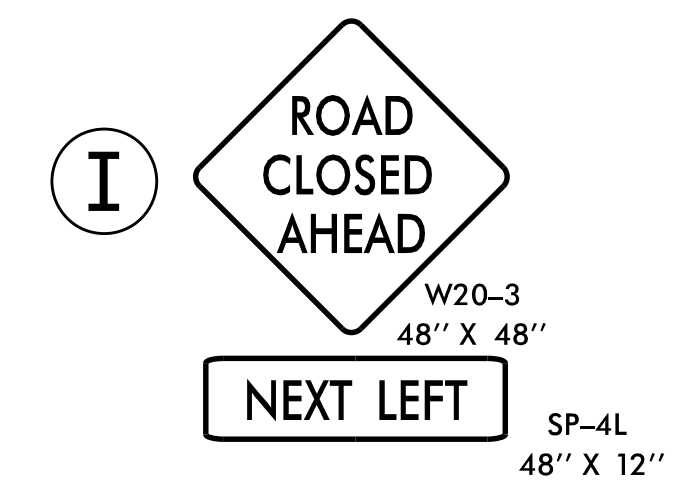
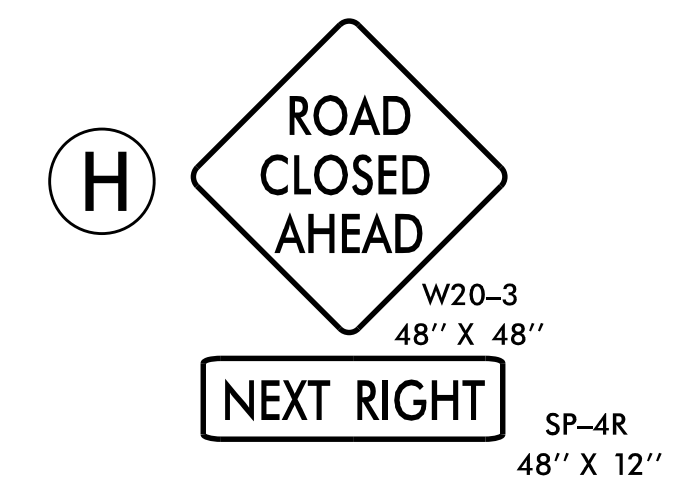
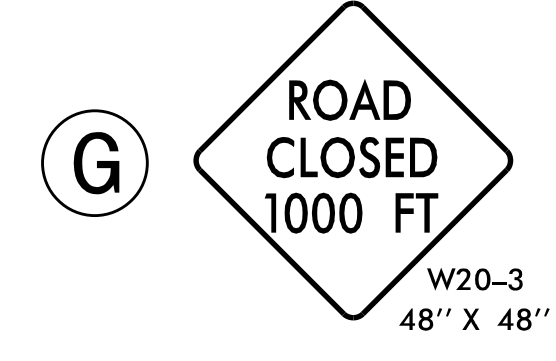
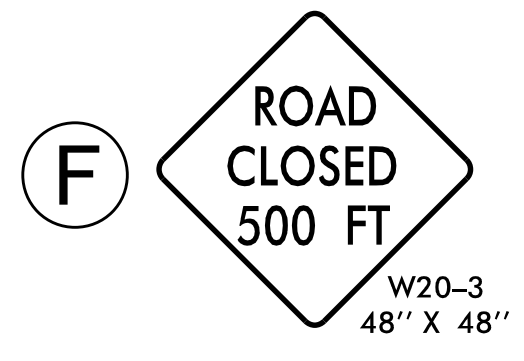
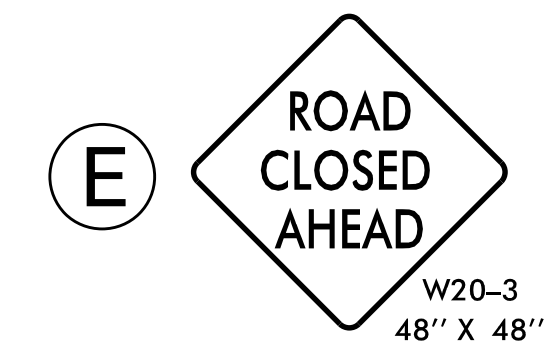
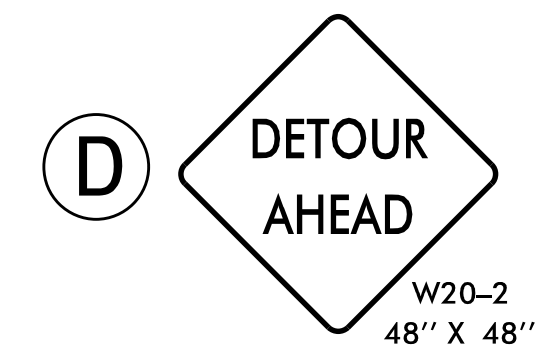
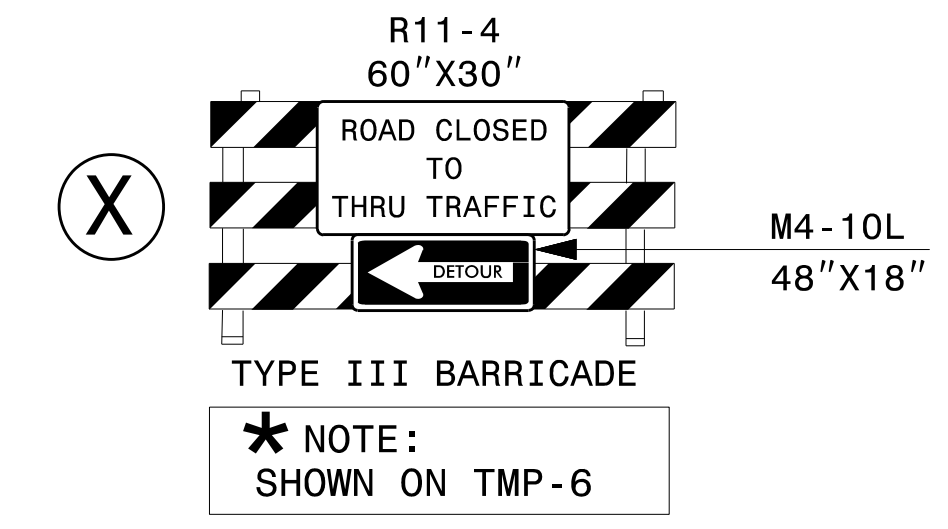
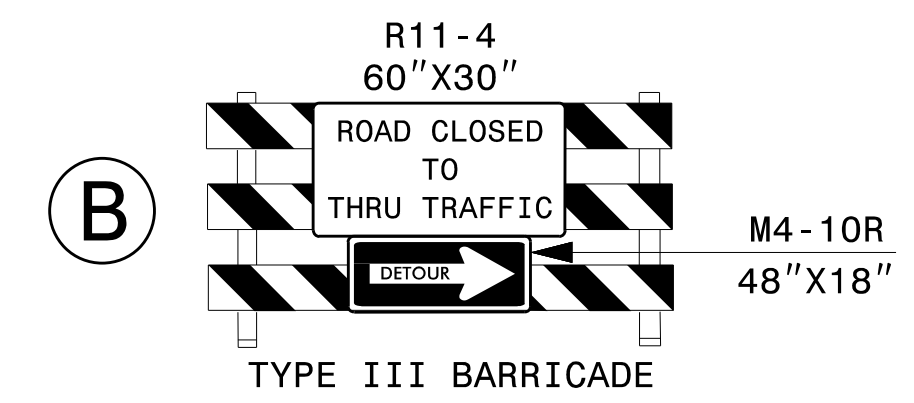
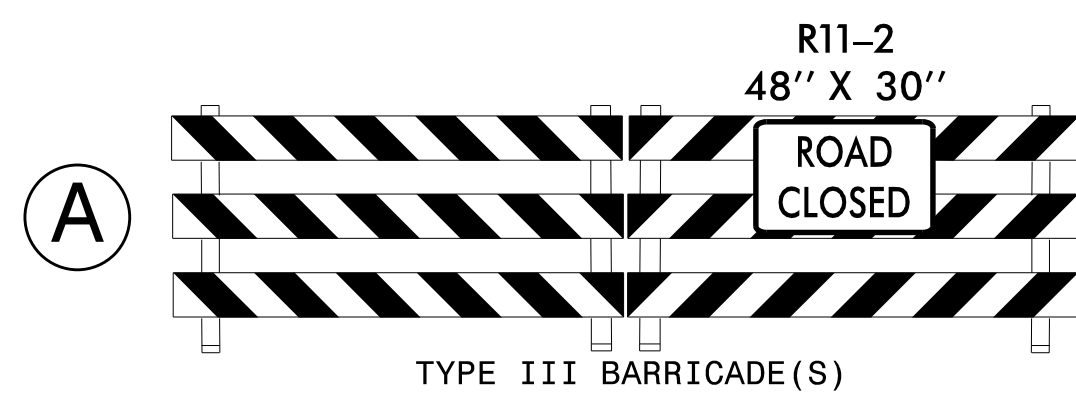
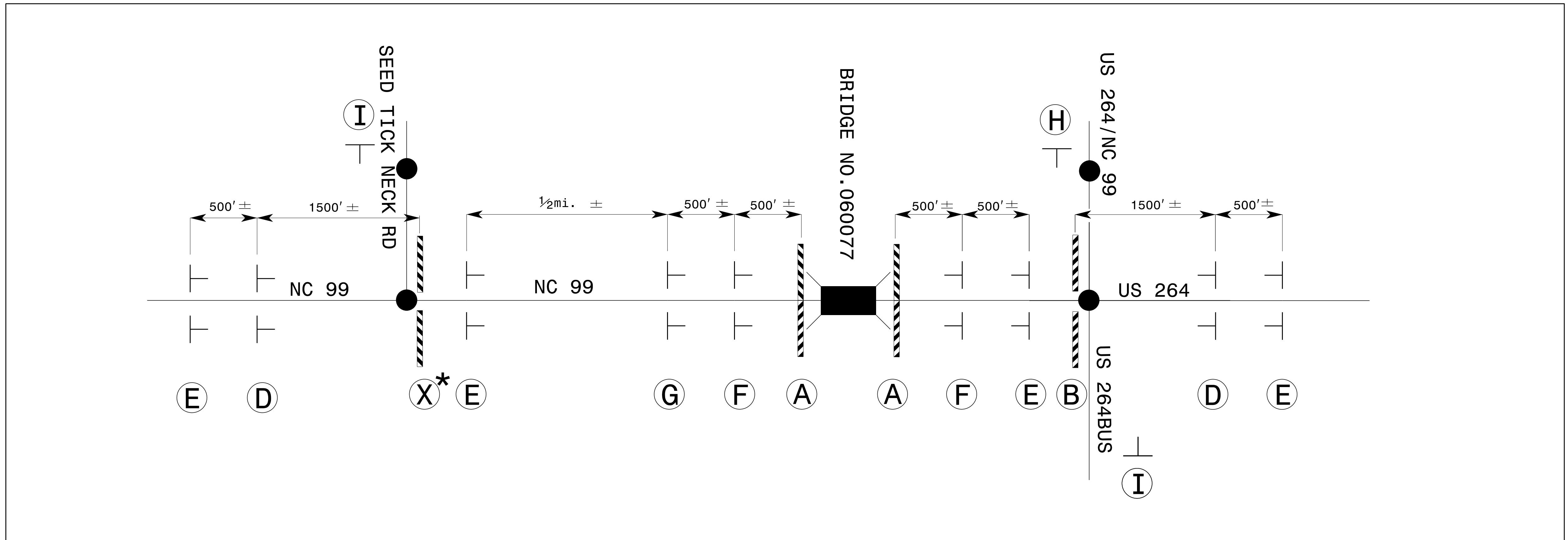


INSET 'B'



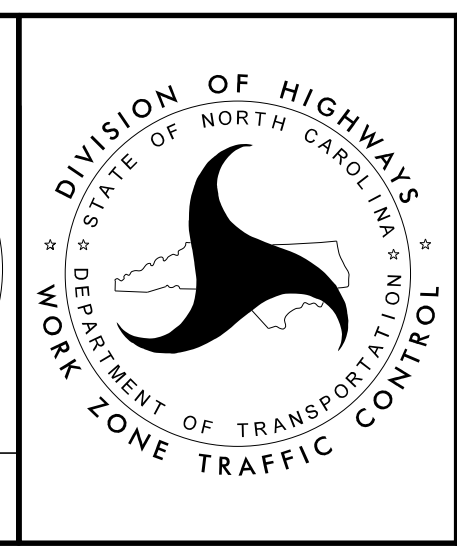
NOTES:
 1. REFER TO RSD 1101.03, SHEET 1 OF 9, FOR APPLICABLE NOTES.
 2. REFER TO SHEET TMP-6 FOR OFF-SITE DETOUR ROUTE.

APPROVED: *Kenneth C. Thornewell, Jr., P.E.*
 DATE: 03/23/2022

1E991EF27373405

SEAL
 044089
 ENGINEER
 KENNETH C. THORNEWELL, JR., P.E.

DOCUMENT NOT CONSIDERED FINAL
 UNLESS ALL SIGNATURES COMPLETED



DETAIL 5
 OFF-SITE DETOUR
 (INSET 'B')

3/16/2022
 S:\TMU\WZTC\DesignGroup2\062508\L\yudmir-skaya\5BPR.56_2020-08-25\FINAL..._TMP\CADD\5BPR.56_TC_TMP_TMP-6A_inset_B.dgn
 User:tdyudmi