

5/14/99

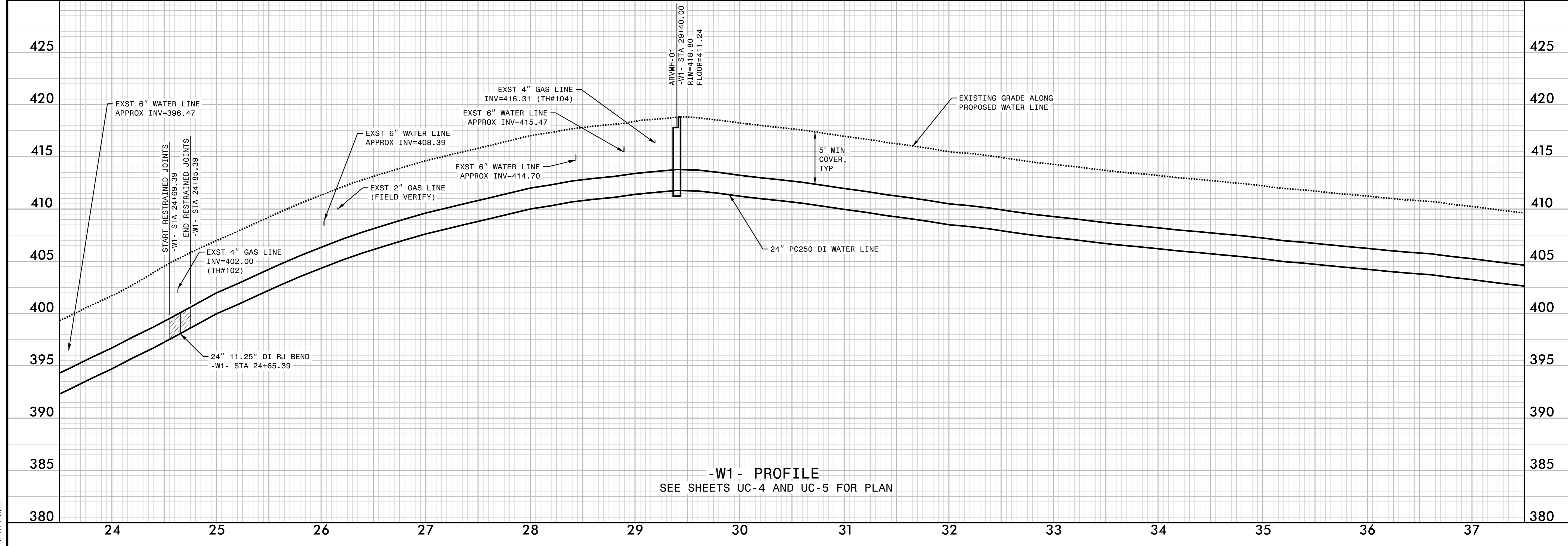
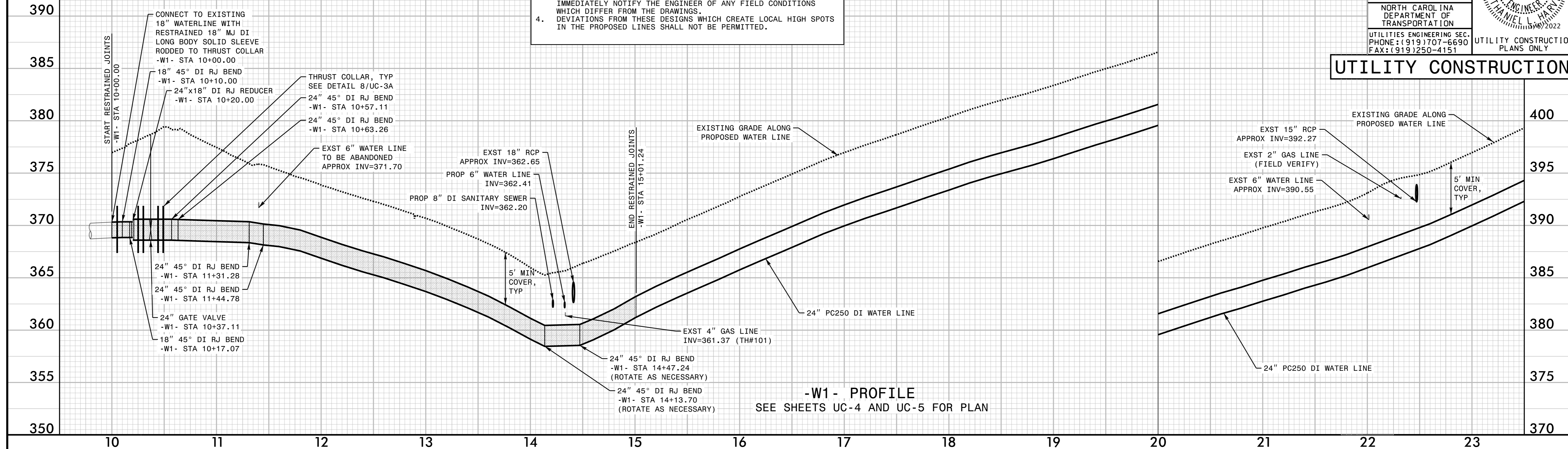
PROFILE NOTES (APPLICABLE TO ALL UTILITY PROFILE SHEETS):

1. CONTRACTOR SHALL BE RESPONSIBLE TO FIELD VERIFY ELEVATION OF ALL CROSSING UTILITIES, WHETHER SHOWN OR NOT SHOWN ON THE DRAWINGS.
2. UTILITIES SPECIFICALLY IDENTIFIED AS "(FIELD VERIFY)" ARE SHOWN IN PROFILE BASED ON THE STATION AT WHICH THE UTILITY CROSSES THE PROPOSED WATER AND SEWER MAINS AND ARE SHOWN AT TYPICAL DEPTHS.
3. CONTRACTOR SHALL VERIFY ALL EXISTING CROSSING UTILITIES PRIOR TO CONSTRUCTING THE PROPOSED UTILITIES AND SHALL IMMEDIATELY NOTIFY THE ENGINEER OF ANY FIELD CONDITIONS WHICH DIFFER FROM THE DRAWINGS.
4. DEVIATIONS FROM THESE DESIGNS WHICH CREATE LOCAL HIGH SPOTS IN THE PROPOSED LINES SHALL NOT BE PERMITTED.

PREPARED BY: **Kimley»Horn**
 421 FAYETTEVILLE STREET, SUITE 600
 RALEIGH, NC 27601

PROJECT REFERENCE NO.	SHEET NO.
U-5815BA	UC-10
DESIGNED BY: NLH	
DRAWN BY: JNB	
CHECKED BY: CPM	
APPROVED BY: NLH	
REVISED:	
NORTH CAROLINA DEPARTMENT OF TRANSPORTATION UTILITIES ENGINEERING SEC. PHONE: (919) 707-6690 FAX: (919) 250-4151	
UTILITY CONSTRUCTION PLANS ONLY	

UTILITY CONSTRUCTION



5/5/2022