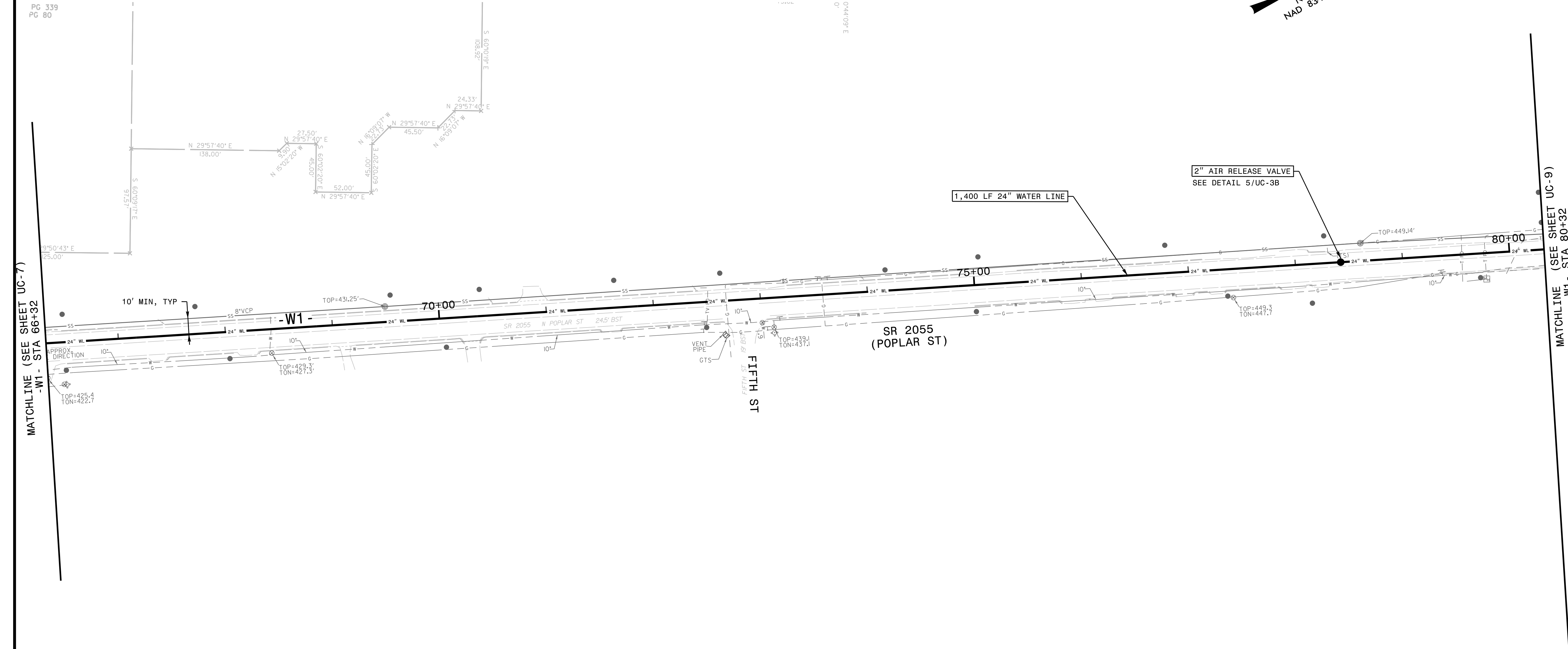


5/14/2022

PREPARED BY:
Kimley Horn
 421 FAYETTEVILLE STREET, SUITE 600
 RALEIGH, NC 27601

| | |
|---|-----------|
| PROJECT REFERENCE NO. | SHEET NO. |
| U-5815BA | UC-8 |
| DESIGNED BY: NLH | |
| DRAWN BY: JNB | |
| CHECKED BY: CPM | |
| APPROVED BY: NLH | |
| REVISIED: | |
| NORTH CAROLINA DEPARTMENT OF TRANSPORTATION UTILITIES ENGINEERING SEC. PHONE: (919) 707-6690 FAX: (919) 250-4151 | |
| UTILITY CONSTRUCTION PLANS ONLY | |



MATCHLINE (SEE SHEET UC-7)
-W1 - STA 66+32

MATCHLINE (SEE SHEET UC-9)
-W1 - STA 80+32

- NOTES:
1. CONTRACTOR SHALL RETAIN AND PROTECT IN PLACE ALL WATER SERVICE LINES AND SANITARY SEWER LATERALS NOT SPECIFIED TO BE REPLACED.
 - A. WATER SERVICE LINES BROKEN DURING CONSTRUCTION SHALL BE REPLACED ENTIRELY FROM THE WATER MAIN TO THE WATER METER PER TOWN OF ABERDEEN DETAIL W.6. THE SERVICE LINE BETWEEN THE CORPORATION STOP AT THE WATER MAIN AND THE CURB STOP AT THE WATER METER SHALL BE ONE CONTINUOUS PIECE WITHOUT FITTINGS OR COUPLINGS.
 - B. SEWER LATERALS MADE OF BITUMINOUS FIBER PIPE OR VITRIFIED CLAY PIPE THAT ARE DAMAGED DURING CONSTRUCTION SHALL BE REPLACED FROM THE SEWER MAIN TO THE NEAREST UPSTREAM UNDAMAGED PIPE JOINT OR EXISTING CLEANOUT WITH SCH 40 PVC AND APPROVED RUBBER COUPLERS DESIGNED FOR THE INTENDED USE.

NOTE:
 THE ESTIMATED QUANTITY OF TOSP DUCTILE IRON WATER PIPE FITTINGS ON THIS PLAN SHEET IS 0 POUNDS. THE ACTUAL QUANTITY AND TYPE OF FITTINGS WILL VARY BASED ON FIELD CONDITIONS.

NOTE:
 THE ESTIMATED QUANTITY OF TOA DUCTILE IRON WATER PIPE FITTINGS ON THIS PLAN SHEET IS 0 POUNDS. THE ACTUAL QUANTITY AND TYPE OF FITTINGS WILL VARY BASED ON FIELD CONDITIONS.

SEE SHEET UC-12 FOR -W1- PROFILE

3/15/2022