

5/14/2022

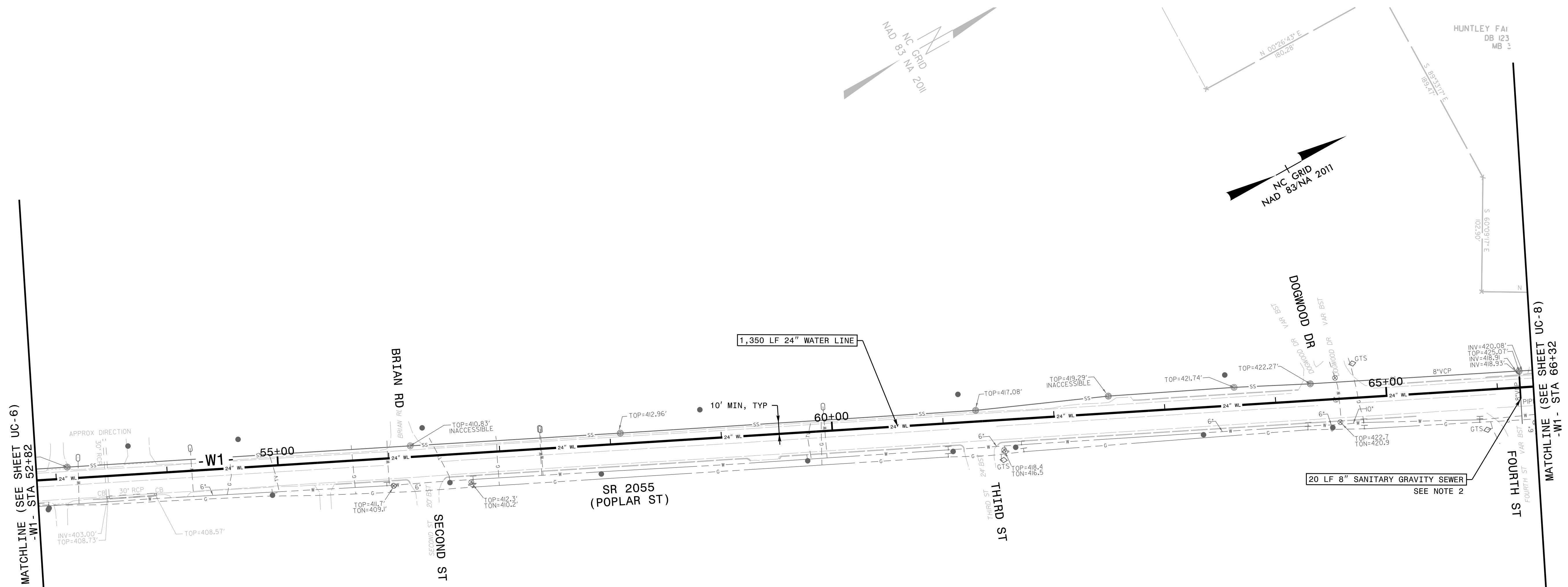
3/15/2022



421 FAYETTEVILLE STREET, SUITE 600  
RALEIGH, NC 27601

PROJECT REFERENCE NO.	U-5815BA	SHEET NO.	UC-7
DESIGNED BY:	NLH		
DRAWN BY:	JNB		
CHECKED BY:	CPM		
APPROVED BY:	NLH		
REVISED:			
NORTH CAROLINA DEPARTMENT OF TRANSPORTATION		UTILITY CONSTRUCTION PLANS ONLY	
UTILITIES ENGINEERING SEC. PHONE: (919) 707-6690 FAX: (919) 250-4151			

# UTILITY CONSTRUCTION



- NOTES:**
- CONTRACTOR SHALL RETAIN AND PROTECT IN PLACE ALL WATER SERVICE LINES AND SANITARY SEWER LATERALS NOT SPECIFIED TO BE REPLACED.
    - WATER SERVICE LINES BROKEN DURING CONSTRUCTION SHALL BE REPLACED ENTIRELY FROM THE WATER MAIN TO THE WATER METER PER TOWN OF ABERDEEN DETAIL W.6. THE SERVICE LINE BETWEEN THE CORPORATION STOP AT THE WATER MAIN AND THE CURB STOP AT THE WATER METER SHALL BE ONE CONTINUOUS PIECE WITHOUT FITTINGS OR COUPLINGS.
    - SEWER LATERALS MADE OF BITUMINOUS FIBER PIPE OR VITRIFIED CLAY PIPE THAT ARE DAMAGED DURING CONSTRUCTION SHALL BE REPLACED FROM THE SEWER MAIN TO THE NEAREST UPSTREAM UNDAMAGED PIPE JOINT OR EXISTING CLEANOUT WITH SCH 40 PVC AND APPROVED RUBBER COUPLERS DESIGNED FOR THE INTENDED USE.
  - CONTRACTOR SHALL REPLACE 20 LF OF SANITARY SEWER WITH A SINGLE JOINT OF 8" DUCTILE IRON PIPE, CENTERED ON THE PROPOSED TRANSMISSION WATER MAIN, MATCHING EXISTING SLOPE. CONNECTIONS TO EXISTING SANITARY SEWER LINE SHALL BE MADE IN ACCORDANCE WITH TOWN OF ABERDEEN STANDARDS AND REQUIREMENTS.

NOTE:  
THE ESTIMATED QUANTITY OF TOSP DUCTILE IRON WATER PIPE FITTINGS ON THIS PLAN SHEET IS 0 POUNDS. THE ACTUAL QUANTITY AND TYPE OF FITTINGS WILL VARY BASED ON FIELD CONDITIONS.

NOTE:  
THE ESTIMATED QUANTITY OF TOA DUCTILE IRON WATER PIPE FITTINGS ON THIS PLAN SHEET IS 0 POUNDS. THE ACTUAL QUANTITY AND TYPE OF FITTINGS WILL VARY BASED ON FIELD CONDITIONS.

SEE SHEET UC-11 AND UC-12 FOR -W1- PROFILE