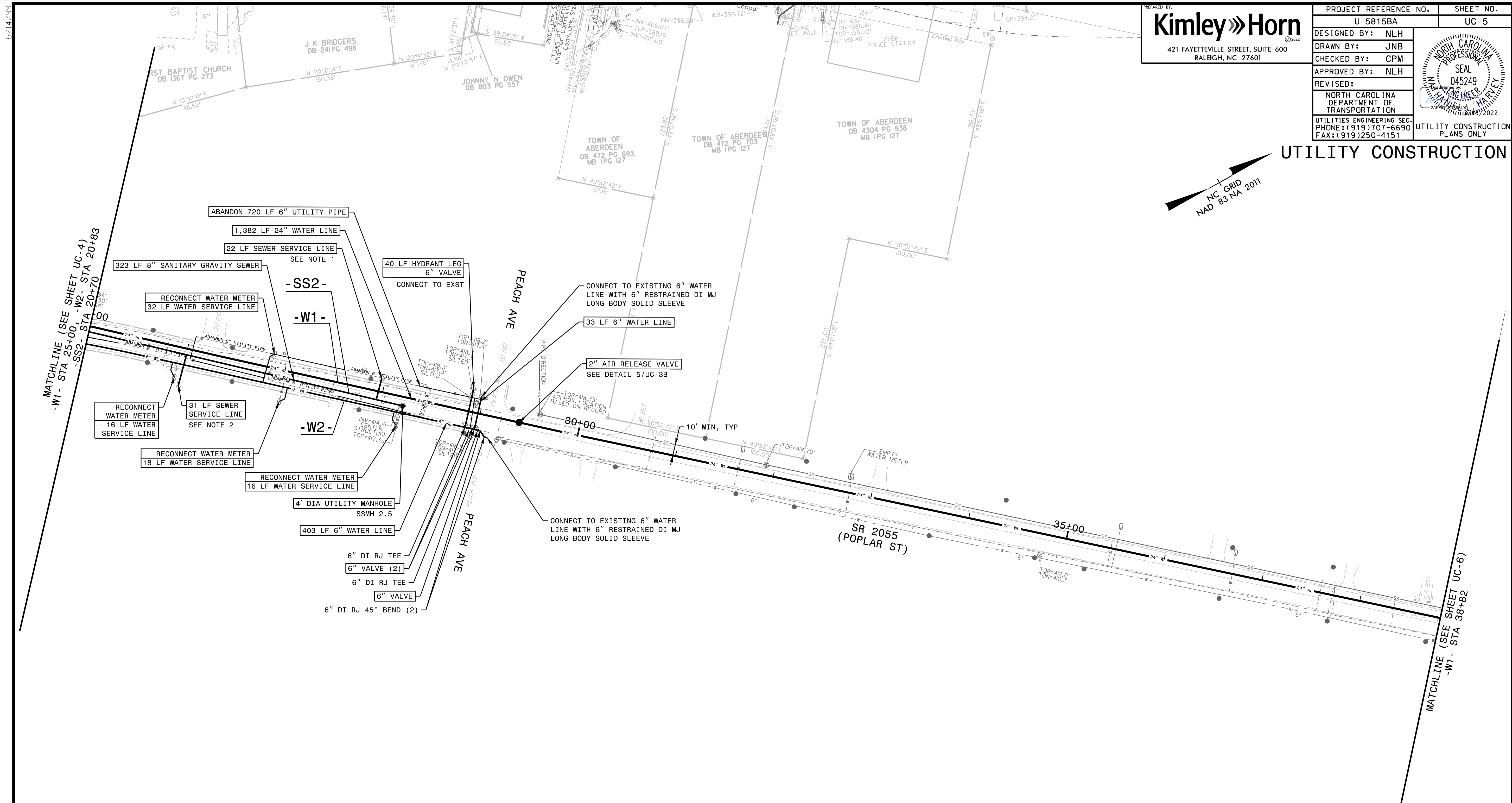


5/14/99

PREPARED BY:
Kimley»Horn
 421 FAYETTEVILLE STREET, SUITE 600
 RALEIGH, NC 27601

PROJECT REFERENCE NO.	SHEET NO.
U-5815BA	UC-5
DESIGNED BY: NLH	
DRAWN BY: JNB	
CHECKED BY: CPM	
APPROVED BY: NLH	
REVISER:	
NORTH CAROLINA DEPARTMENT OF TRANSPORTATION	
UTILITIES ENGINEERING SEC. PHONE: (919) 707-6690 FAX: (919) 250-4151	UTILITY CONSTRUCTION PLANS ONLY



- NOTES:
- CONTRACTOR SHALL REPLACE ALL SANITARY SEWER SERVICE LINES CONNECTING TO -SS2- ON THE WEST SIDE OF N POPLAR ST, INCLUDING THOSE NOT SHOWN, FROM THE PROPOSED GRAVITY SEWER MAIN TO THE CLEANOUT AT THE RIGHT-OF-WAY LINE. IF NO CLEANOUT IS PRESENT WITHIN 2 FEET OF THE RIGHT-OF-WAY LINE, THE CONTRACTOR SHALL INSTALL A NEW CLEANOUT AT THE RIGHT-OF-WAY LINE PER DETAIL 1/UC-3C AND RECONNECT THE SERVICE LINE.
 - CONTRACTOR SHALL RECONNECT ALL SANITARY SEWER SERVICE LINES CONNECTING TO -SS2- ON THE EAST SIDE OF N POPLAR, INCLUDING REPLACEMENT OF TERMINAL FITTINGS AT THE PROPOSED SANITARY SEWER MAIN AND CONNECTION TO THE EXISTING LATERAL PIPE.
 - CONTRACTOR SHALL RETAIN AND PROTECT IN PLACE ALL WATER SERVICE LINES AND SANITARY SEWER LATERALS NOT SPECIFIED TO BE REPLACED.
 - WATER SERVICE LINES BROKEN DURING CONSTRUCTION SHALL BE REPLACED ENTIRELY FROM THE WATER MAIN TO THE WATER METER PER TOWN OF ABERDEEN DETAIL W-6. THE SERVICE LINE BETWEEN THE CORPORATION STOP AT THE WATER MAIN AND THE CURB STOP AT THE WATER METER SHALL BE ONE CONTINUOUS PIECE WITHOUT FITTINGS OR COUPLINGS.
 - SEWER LATERALS MADE OF BITUMINOUS FIBER PIPE OR VITRIFIED CLAY PIPE THAT ARE DAMAGED DURING CONSTRUCTION SHALL BE REPLACED FROM THE SEWER MAIN TO THE NEAREST UPSTREAM UNDAUNAGED PIPE JOINT OR EXISTING CLEANOUT WITH SCH 40 PVC AND APPROVED RUBBER COUPLERS DESIGNED FOR THE INTENDED USE.

NOTE:
 THE ESTIMATED QUANTITY OF TOSP DUCTILE IRON WATER PIPE FITTINGS ON THIS PLAN SHEET IS 0 POUNDS. THE ACTUAL QUANTITY AND TYPE OF FITTINGS WILL VARY BASED ON FIELD CONDITIONS.

NOTE:
 THE ESTIMATED QUANTITY OF TOA DUCTILE IRON WATER PIPE FITTINGS ON THIS PLAN SHEET IS 595 POUNDS. THE ACTUAL QUANTITY AND TYPE OF FITTINGS WILL VARY BASED ON FIELD CONDITIONS.

SEE SHEET UC-13 FOR -SS1- PROFILE
 SEE SHEET UC-10 AND UC-11 FOR -W1- PROFILE

3/15/2022