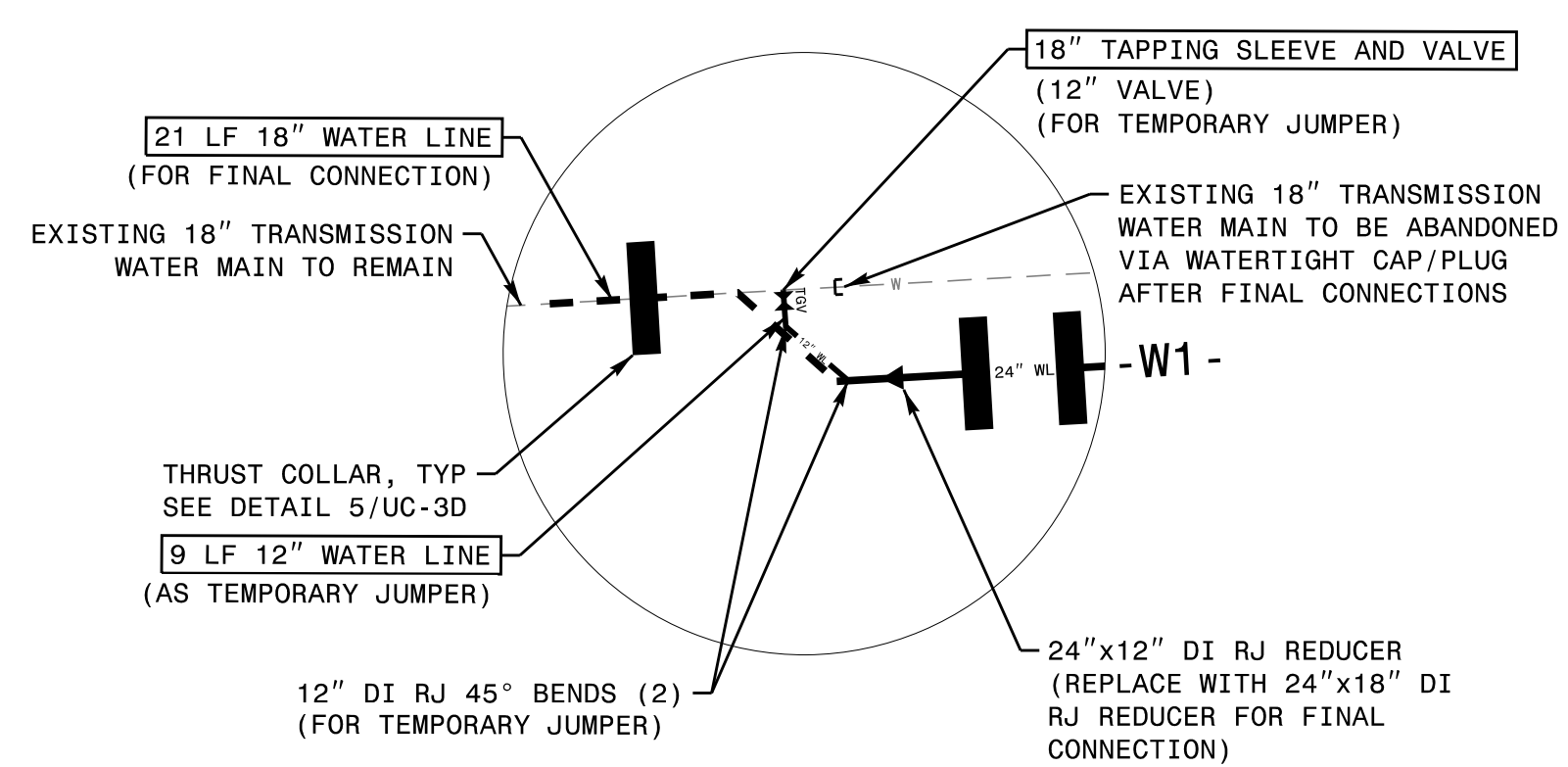


5/14/2022

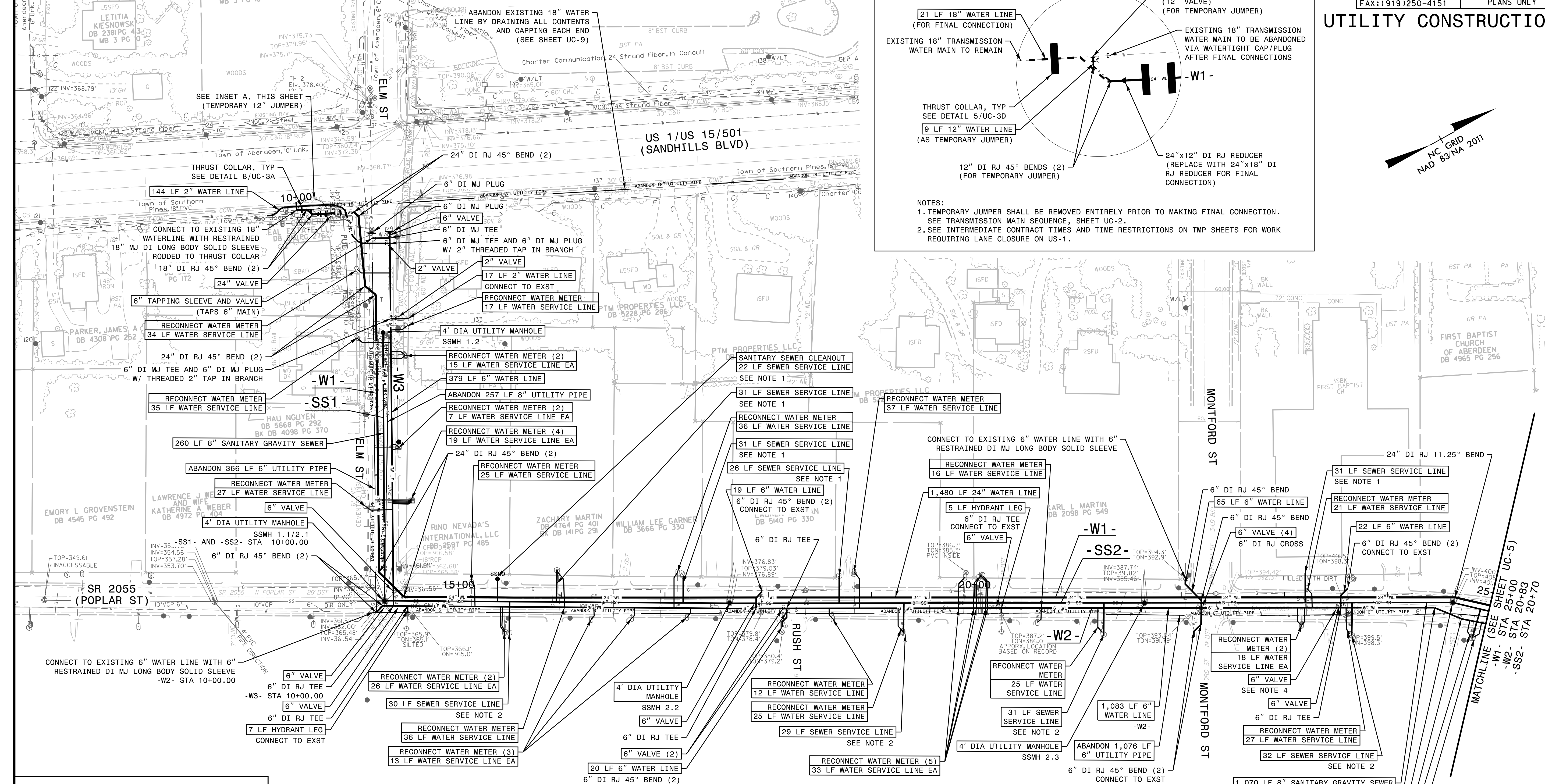
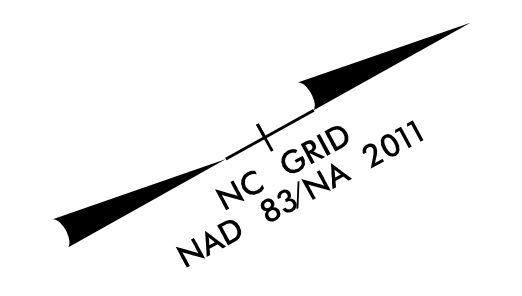
PREPARED BY:
Kimley Horn
 421 FAYETTEVILLE STREET, SUITE 600
 RALEIGH, NC 27601

PROJECT REFERENCE NO.	U-5815BA	SHEET NO.	UC-4
DESIGNED BY:	NLH		
DRAWN BY:	JNB		
CHECKED BY:	CPM		
APPROVED BY:	NLH		
REVISED:			
NORTH CAROLINA DEPARTMENT OF TRANSPORTATION UTILITIES ENGINEERING SECTION PHONE: (919) 707-6690 FAX: (919) 250-4151		UTILITY CONSTRUCTION PLANS ONLY	

INSET A - TEMPORARY 12" JUMPER
 N.T.S.



- NOTES:
 1. TEMPORARY JUMPER SHALL BE REMOVED ENTIRELY PRIOR TO MAKING FINAL CONNECTION. SEE TRANSMISSION MAIN SEQUENCE, SHEET UC-2.
 2. SEE INTERMEDIATE CONTRACT TIMES AND TIME RESTRICTIONS ON TMP SHEETS FOR WORK REQUIRING LANE CLOSURE ON US-1.



DATUM DESCRIPTION

THE LOCALIZED COORDINATE SYSTEM DEVELOPED FOR THIS PROJECT IS BASED ON THE STATE PLANE COORDINATES ESTABLISHED BY NCGS FOR MONUMENT "WICKS"
 WITH NAD 83/NA 2011 STATE PLANE GRID COORDINATES OF NORTHING: 510807.8371(ft) EASTING: 1875435.5011(ft) ELEVATION: 436.691(ft)
 THE AVERAGE COMBINED GRID FACTOR USED ON THIS PROJECT (GROUND TO GRID) IS: 0.99985820
 THE N.C. LAMBERT GRID BEARING AND LOCALIZED HORIZONTAL GROUND DISTANCE FROM "WICKS" TO L- STATION IS
 ALL LINEAR DIMENSIONS ARE LOCALIZED HORIZONTAL DISTANCES VERTICAL DATUM USED IS NAVD 88

NOTE:
 THE ESTIMATED QUANTITY OF TOSP DUCTILE IRON WATER PIPE FITTINGS ON THIS PLAN SHEET IS 7,980 POUNDS. THE ACTUAL QUANTITY AND TYPE OF FITTINGS WILL VARY BASED ON FIELD CONDITIONS.

NOTE:
 THE ESTIMATED QUANTITY OF TOA DUCTILE IRON WATER PIPE FITTINGS ON THIS PLAN SHEET IS 3,170 POUNDS. THE ACTUAL QUANTITY AND TYPE OF FITTINGS WILL VARY BASED ON FIELD CONDITIONS.

NOTES:

- CONTRACTOR SHALL REPLACE ALL SANITARY SEWER SERVICE LINES THAT CONNECT TO -SS2- ON THE WEST SIDE OF N POPLAR ST, INCLUDING THOSE NOT SHOWN, FROM THE PROPOSED GRAVITY SEWER MAIN TO THE CLEANOUT AT THE RIGHT-OF-WAY LINE. IF NO CLEANOUT IS PRESENT WITHIN 2 FEET OF THE RIGHT-OF-WAY LINE, THE CONTRACTOR SHALL INSTALL A NEW CLEANOUT AT THE RIGHT-OF-WAY LINE PER DETAIL S.7/UC-3B AND RECONNECT THE SERVICE LINE.
- CONTRACTOR SHALL RECONNECT ALL SANITARY SEWER SERVICE LINES THAT CONNECT TO -SS2- ON THE EAST SIDE OF N POPLAR AND -SS1- ON BOTH SIDES OF ELM ST, INCLUDING REPLACEMENT OF TERMINAL FITTINGS AT THE PROPOSED GRAVITY SEWER MAIN AND CONNECTION TO THE EXISTING LATERAL PIPE.
- CONTRACTOR SHALL RETAIN AND PROTECT IN PLACE ALL WATER SERVICE LINES. WATER SERVICE LINES BROKEN DURING CONSTRUCTION SHALL BE REPLACED ENTIRELY FROM THE WATER MAIN TO THE WATER METER PER TOWN OF ABERDEEN DETAIL W.6. THE SERVICE LINE BETWEEN THE CORPORATION STOP AT THE WATER MAIN AND THE CURB STOP AT THE WATER METER SHALL BE ONE CONTINUOUS PIECE WITHOUT FITTINGS OR COUPLINGS.
- PROPOSED 6" LINE GATE VALVE APPROXIMATELY 95 FT NORTH OF MONTFORD STREET IS A PRESSURE ZONE BOUNDARY VALVE. CONTRACTOR SHALL COORDINATE WITH TOWN OF ABERDEEN TO ENSURE BOUNDARY VALVE IS CLOSED PRIOR TO SERVICE AND FINAL CONNECTIONS.

SEE SHEET UC-13 FOR -SS1- AND -SS2- PROFILES
 SEE SHEET UC-10 FOR -W1- PROFILE

3/29/2022