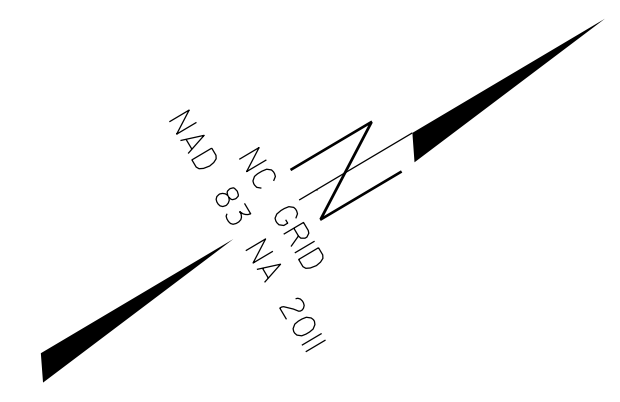


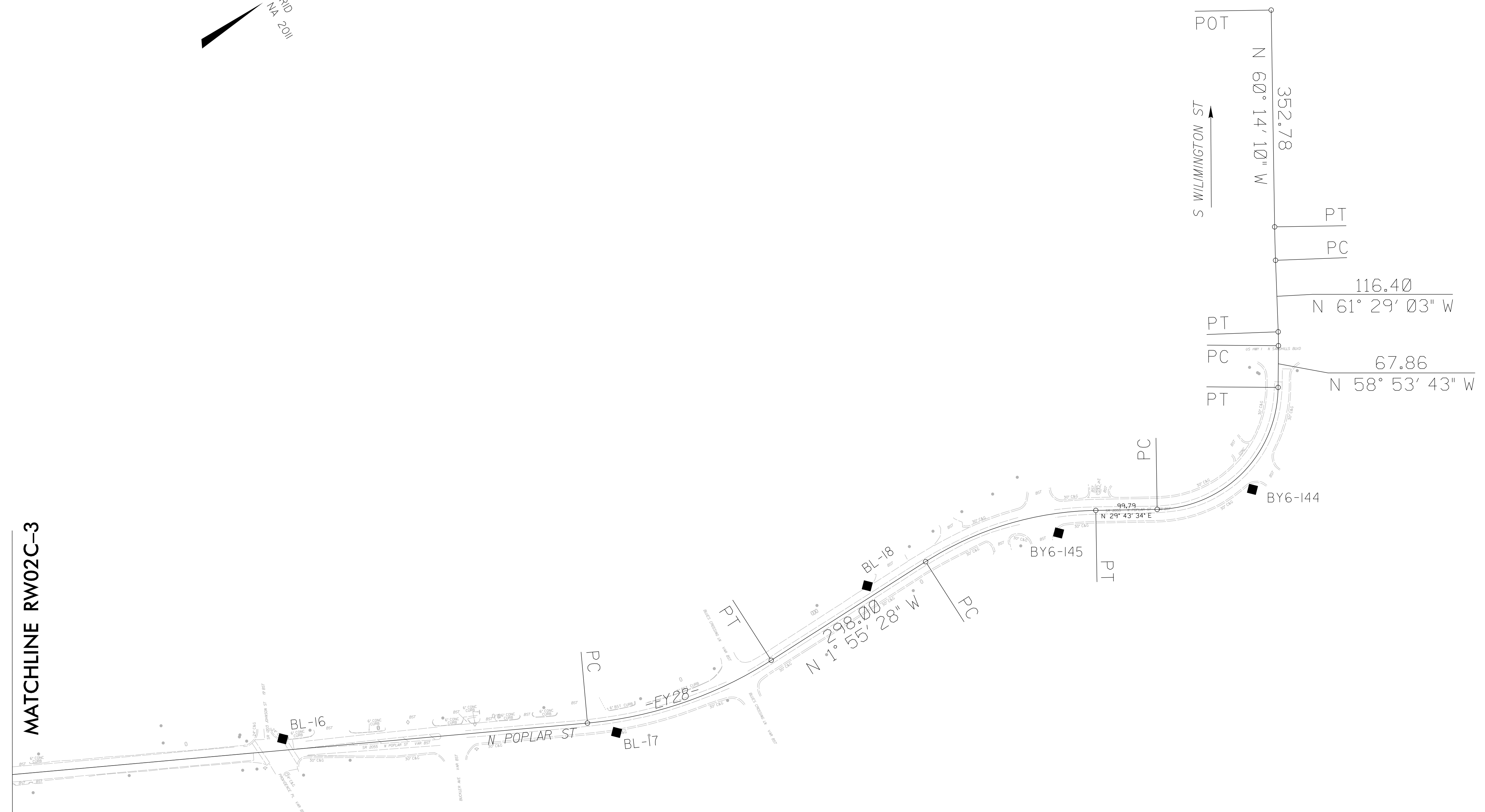
SURVEY CONTROL SHEET

W/ EXISTING CENTERLINE ALIGNMENTS PRIOR TO CONSTRUCTION

PROJECT REFERENCE NO. N POPLAR ST	SHEET NO. RW02C-4
Location and Surveys	
DOCUMENT NOT CONSIDERED FINAL UNLESS ALL SIGNATURES COMPLETED	



MATCHLINE RW02C-3



NOTES:

1. PROJECT CONTROL WAS ESTABLISHED USING GNSS, THE GLOBAL NAVIGATION SATELLITE SYSTEM.
2. THE SURVEY CONTROL DATA FOR THIS PROJECT HAS BEEN COMPILED FROM VARIOUS SOURCES. IF FURTHER INFORMATION REGARDING PROJECT CONTROL IS NEEDED, PLEASE CONTACT THE MCKIM & CREED.

REVISIONS

17-FEB-2022 16:14
 R:\1258\Kimley-Horn\0196\B0-Drawings\Working\Nor-th-Poplar St_1s_rw02c-4_220215.dgn
 SVrncent