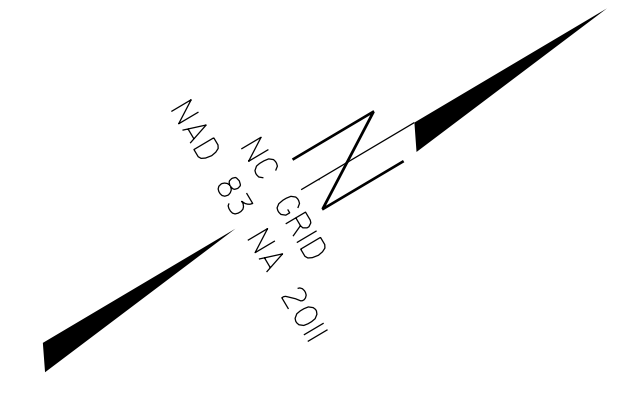


SURVEY CONTROL SHEET

W/ EXISTING CENTERLINE ALIGNMENTS PRIOR TO CONSTRUCTION



PROJECT REFERENCE NO.	SHEET NO.
N POPLAR ST	RW02C-1
Location and Surveys	
DOCUMENT NOT CONSIDERED FINAL UNLESS ALL SIGNATURES COMPLETED	

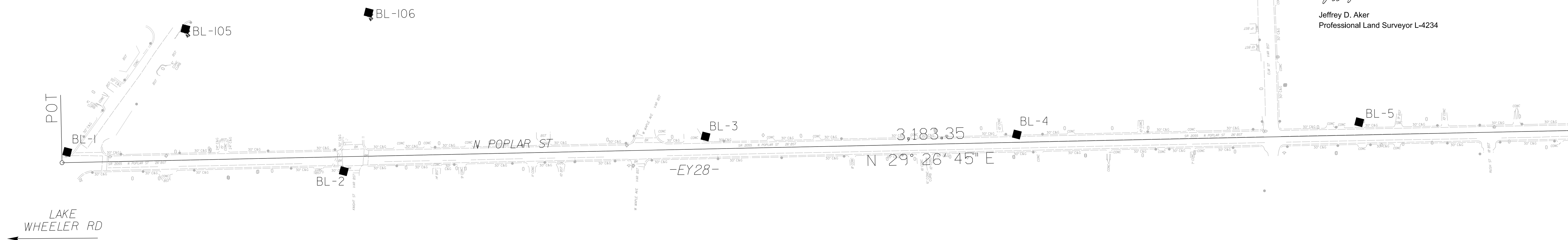
EY28 POINT	N	E	BEARING	DIST	DELTA	D	L	T	R
POT	503343.497	1871955.266	N 29°26'45.2" E	3183.35					
LINE									
PC	506115.621	1873520.204							
CURVE			N 35°39'31.0" E	161.79	12°25'31.5"(RT)	07°40'14.6"	161.99	81.37	747.50
PT	506247.075	1873614.519	N 41°52'16.8" E	482.16					
LINE									
PC	506606.116	1873936.344							
CURVE			N 41°26'11.2" E	233.26	00°52'11.1"(LT)	00°22'22.3"	233.27	116.64	15366.71
PT	506780.992	1874090.716	N 41°00'05.7" E	770.72					
LINE									
PC	507362.647	1874596.369							
CURVE			N 33°16'32.5" E	228.09	15°27'06.3"(LT)	06°45'27.8"	228.65	115.09	848.35
PT	507553.342	1874721.516	N 25°32'59.3" E	4452.76					
LINE									
PC	511570.666	1876641.971							
CURVE			N 11°48'45.4" E	315.83	27°28'27.8"(LT)	08°37'26.6"	318.58	162.57	665.00
PT	511879.811	1876706.626	N 01°55'28.5" W	298.00					
LINE									
PC	512177.643	1876696.618							
CURVE			N 13°54'02.6" E	289.07	31°39'02.2"(RT)	10°49'35.8"	292.34	150.23	530.00
PT	512458.245	1876766.063	N 29°43'33.7" E	99.79					
LINE									
PC	512544.905	1876815.545							
CURVE			N 14°35'04.5" W	279.42	88°37'16.4"(LT)	28°57'18.1"	306.07	195.24	200.00
PT	512815.320	1876745.185	N 58°53'42.7" W	67.86					
LINE									
PC	512850.376	1876687.083							
CURVE			N 60°11'22.9" W	22.59	02°35'20.3"(LT)	11°28'42.0"	22.56	11.30	500.00
PT	512861.607	1876667.481	N 61°29'03.0" W	116.40					
LINE									
PC	512917.177	1876565.202							
CURVE			N 60°51'36.7" W	54.45	01°14'52.6"(RT)	02°17'31.1"	54.45	27.23	2500.00
PT	512943.691	1876517.642	N 60°14'10.4" W	352.78					
LINE									
POT	513118.821	1876211.400							

I, Jeffrey D. Aker, PLS, certify that the Project Control was performed under my supervision from an actual GPS survey made under my supervision and the following information was used to perform the survey:

Class of survey: AA
 Type of GPS field procedure: RTN
 Dates of survey: 3/07/19-8/13/19
 Datum/Epoch: NAD 1983/NA 2011
 Published/Fixed-control use: N/A
 Localized around: WICKS
 Northing: 510807.837
 Easting: 1875435.501
 Combined grid factor: 0.99985820
 Geoid model: G18US
 Units: USFT

I also certify that the Baseline Control for this project was completed under my direct and responsible charge from an actual survey made under my supervision; that all horizontal closures had a minimum ratio of precision of 1:20,000 (Class AA) and Vertical accuracy to Class A. Field work was performed from 3/7/19 to 8/13/19, and all coordinates are based on NAD 83/2011 and all elevations are based on NAVD 88; that this survey was performed to meet the requirements of 21NCAC 56.1600 as applicable.

This 17th day of February, 2022.
Jeffrey D. Aker
 Jeffrey D. Aker
 Professional Land Surveyor L-4234



BY28 POINT	DESC.	NORTH	EAST	ELEVATION
106	BL - 106	503967.4370	1872005.1310	332.16
105	BL - 105	503663.1230	1871859.7490	332.48
1	BL - 1	503361.7940	1871943.1200	332.83
2	BL - 2	503779.9210	1872232.0060	330.96
3	BL - 3	504382.7710	1872515.6430	329.65
4	BL - 4	504875.6910	1872803.6600	342.86
5	BL - 5	505427.1510	1873104.4650	372.72
6	BL - 6	506004.4300	1873440.2130	395.22
7	BL - 7	506503.6870	1873824.7900	418.21
8	BL - 8	506908.0400	1874181.4080	412.51
9	BL - 9	507335.1020	1874597.5470	406.77
10	BL - 10	507880.5460	1874859.2600	401.11
11	BL - 11	508420.7940	1875119.0850	409.03
12	BL - 12	508957.8760	1875376.0140	412.91
13	BL - 13	509498.8860	1875632.1260	422.24
14	BL - 14	510077.3930	1875908.8270	433.05
15	BL - 15	510616.0350	1876167.6730	447.13
16	BL - 16	511131.3230	1876411.0460	446.77
17	BL - 17	511603.6410	1876679.1910	450.55
18	BL - 18	512075.9670	1876681.9940	461.22
145	BY6 - 145	512387.4730	1876766.7100	468.73
144	BY6 - 144	512694.8040	1876866.5330	472.85

NOTES:

- PROJECT CONTROL WAS ESTABLISHED USING GNSS, THE GLOBAL NAVIGATION SATELLITE SYSTEM.
- THE SURVEY CONTROL DATA FOR THIS PROJECT HAS BEEN COMPILED FROM VARIOUS SOURCES. IF FURTHER INFORMATION REGARDING PROJECT CONTROL IS NEEDED, PLEASE CONTACT MCKIM & CREED.

REVISIONS

17-FEB-2022 16:11 Horn\0196\80-Drawings\Working\Nor-th-Poplar St-1s-rw02c-1-220215.dgn
 R:\196\Kimley-Horn\0196\80-Drawings\Working\Nor-th-Poplar St-1s-rw02c-1-220215.dgn
 Vincent

MATCHLINE RW02C-2