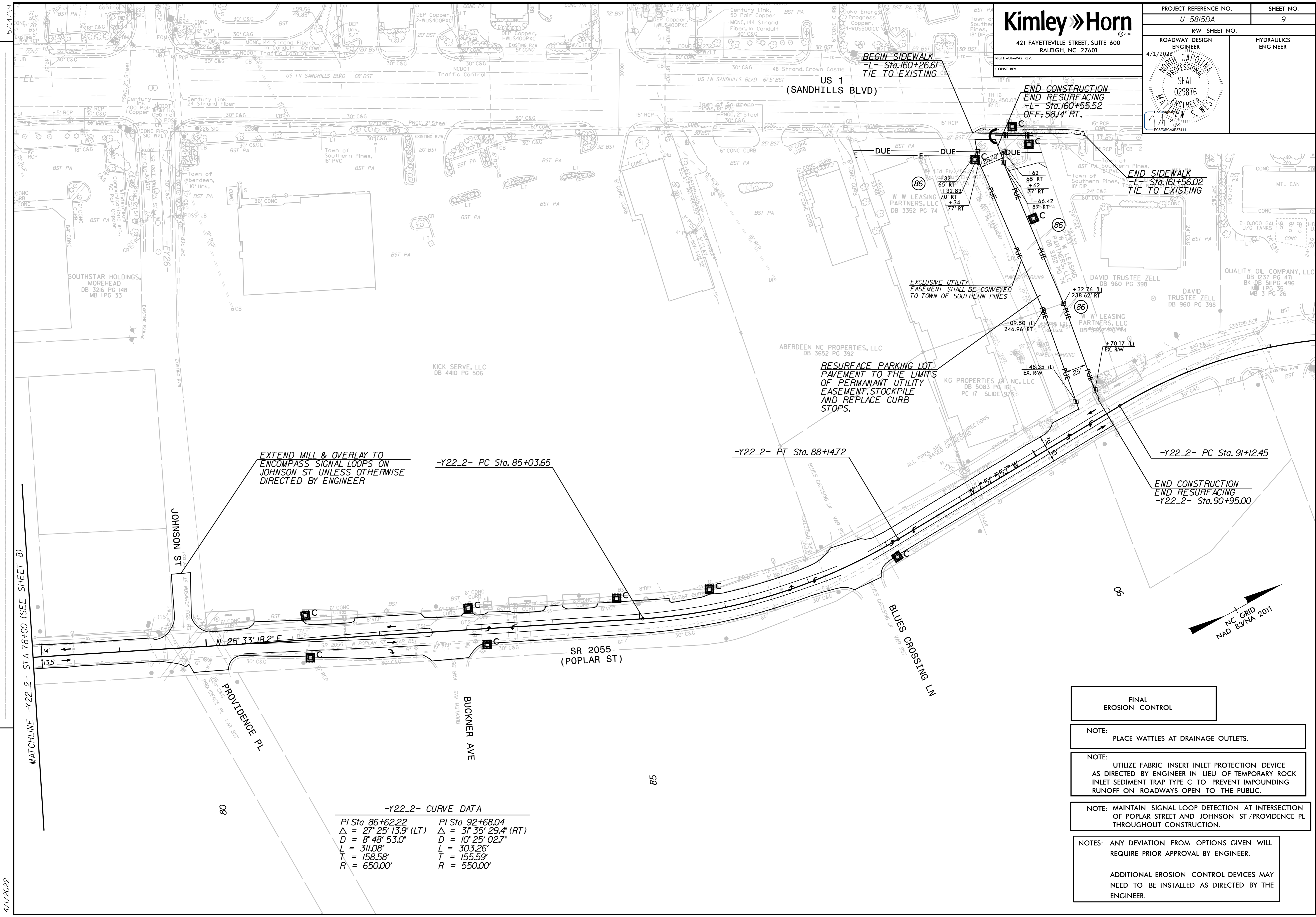


Kimley»Horn

421 FAYETTEVILLE STREET, SUITE 600
RALEIGH, NC 27601

PROJECT REFERENCE NO. U-5815BA	SHEET NO. 9
RW SHEET NO.	
ROADWAY DESIGN ENGINEER 4/1/2022	HYDRAULICS ENGINEER

REVISIONS



EXTEND MILL & OVERLAY TO ENCOMPASS SIGNAL LOOPS ON JOHNSON ST UNLESS OTHERWISE DIRECTED BY ENGINEER

RESURFACE PARKING LOT PAVEMENT TO THE LIMITS OF PERMANENT UTILITY EASEMENT. STOCKPILE AND REPLACE CURB STOPS.

EXCLUSIVE UTILITY EASEMENT SHALL BE CONVEYED TO TOWN OF SOUTHERN PINES

-Y22_2- CURVE DATA

PI Sta 86+62.22	PI Sta 92+68.04
$\Delta = 27^{\circ} 25' 13.9" (LT)$	$\Delta = 31^{\circ} 35' 29.4" (RT)$
$D = 8^{\circ} 48' 53.0"$	$D = 10^{\circ} 25' 02.7"$
$L = 311.08'$	$L = 303.26'$
$T = 158.58'$	$T = 155.59'$
$R = 650.00'$	$R = 550.00'$

- FINAL EROSION CONTROL
- NOTE: PLACE WATTLES AT DRAINAGE OUTLETS.
- NOTE: UTILIZE FABRIC INSERT INLET PROTECTION DEVICE AS DIRECTED BY ENGINEER IN LIEU OF TEMPORARY ROCK INLET SEDIMENT TRAP TYPE C TO PREVENT IMPOUNDING RUNOFF ON ROADWAYS OPEN TO THE PUBLIC.
- NOTE: MAINTAIN SIGNAL LOOP DETECTION AT INTERSECTION OF POPLAR STREET AND JOHNSON ST / PROVIDENCE PL THROUGHOUT CONSTRUCTION.
- NOTES: ANY DEVIATION FROM OPTIONS GIVEN WILL REQUIRE PRIOR APPROVAL BY ENGINEER.
- ADDITIONAL EROSION CONTROL DEVICES MAY NEED TO BE INSTALLED AS DIRECTED BY THE ENGINEER.

MATCHLINE -Y22_2- STA 78+00 (SEE SHEET B)

4/1/2022