

5/14/22

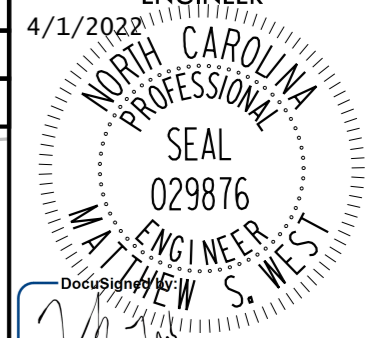
JB INVESTMENTS LLC
DB 4951 PG 574
BK DB 2872 PG 218
MB 3 PG 26

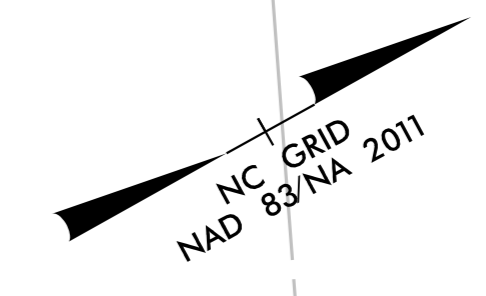
WEBB INVESTMENT
PROPERTIES, LLC
DB 4223 PG 591
MB 3 PG 26

PROPERTIES, LLC
DB 4223 PG 591
MB 3 PG 26

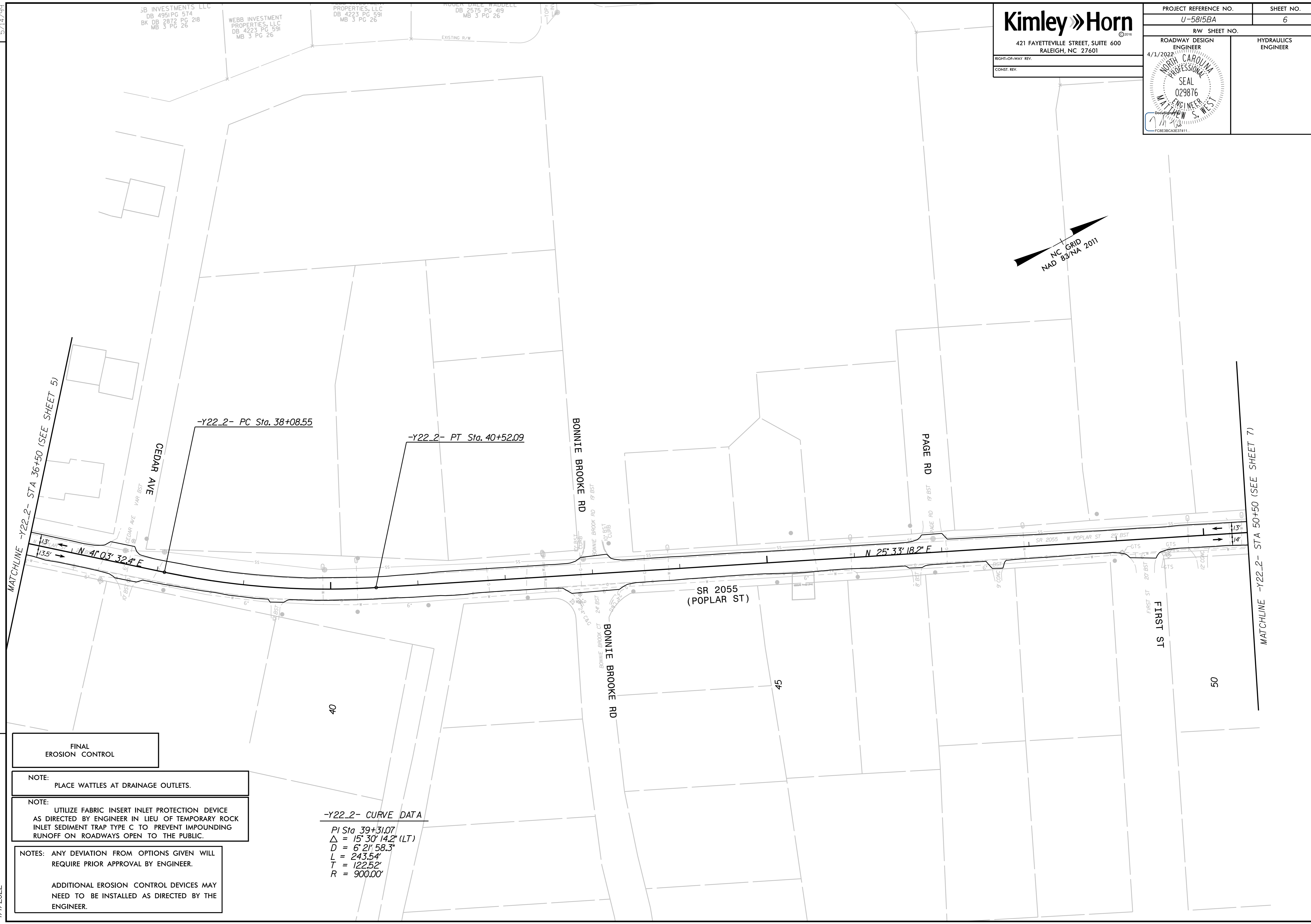
ROOFTOP DRAINAGE
DB 2575 PG 419
MB 3 PG 26

EXISTING R/W

PROJECT REFERENCE NO. U-5815BA		SHEET NO. 6
RW SHEET NO.		
ROADWAY DESIGN ENGINEER 4/1/2022	HYDRAULICS ENGINEER	
		
421 FAYETTEVILLE STREET, SUITE 600 RALEIGH, NC 27601		
RIGHT-OF-WAY REV. CONST. REV.		



REVISIONS



FINAL EROSION CONTROL

NOTE: PLACE WATTLES AT DRAINAGE OUTLETS.

NOTE: UTILIZE FABRIC INSERT INLET PROTECTION DEVICE AS DIRECTED BY ENGINEER IN LIEU OF TEMPORARY ROCK INLET SEDIMENT TRAP TYPE C TO PREVENT IMPOUNDING RUNOFF ON ROADWAYS OPEN TO THE PUBLIC.

NOTES: ANY DEVIATION FROM OPTIONS GIVEN WILL REQUIRE PRIOR APPROVAL BY ENGINEER.

ADDITIONAL EROSION CONTROL DEVICES MAY NEED TO BE INSTALLED AS DIRECTED BY THE ENGINEER.

4/1/2022