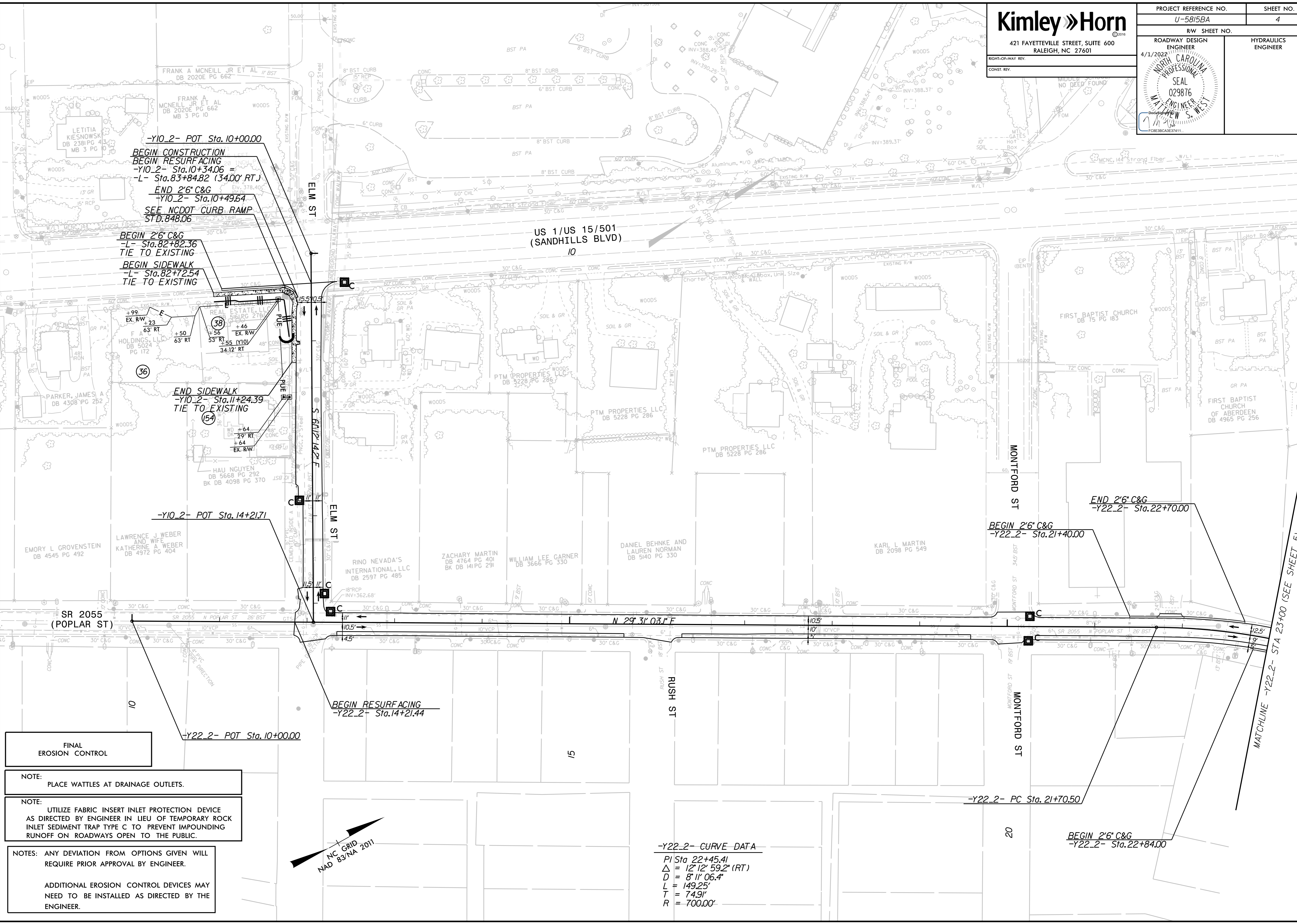


PROJECT REFERENCE NO. <b>U-5815BA</b>	SHEET NO. <b>4</b>
RW SHEET NO.	
ROADWAY DESIGN ENGINEER 4/1/2022	HYDRAULICS ENGINEER

REVISIONS



-Y10\_2- POT Sta.10+00.00  
**BEGIN CONSTRUCTION**  
**BEGIN RESURFACING**  
 -Y10\_2- Sta.10+34.06 =  
 -L- Sta.83+84.82 (34.00' RT.)  
**END 2'6" C&G**  
 -Y10\_2- Sta.10+49.64  
**SEE NCDOT CURB RAMP**  
**STD.848.06**

**BEGIN 2'6" C&G**  
 -L- Sta.82+82.36  
**TIE TO EXISTING**  
**BEGIN SIDEWALK**  
 -L- Sta.82+72.54  
**TIE TO EXISTING**

**END SIDEWALK**  
 -Y10\_2- Sta.11+24.39  
**TIE TO EXISTING**

-Y10\_2- POT Sta.14+21.71

**BEGIN RESURFACING**  
 -Y22\_2- Sta.14+21.44

-Y22\_2- POT Sta.10+00.00

**END 2'6" C&G**  
 -Y22\_2- Sta.22+70.00

**BEGIN 2'6" C&G**  
 -Y22\_2- Sta.21+40.00

-Y22\_2- PC Sta.21+70.50

**BEGIN 2'6" C&G**  
 -Y22\_2- Sta.22+84.00

-Y22\_2- CURVE DATA  
 PI Sta 22+45.41  
 $\Delta = 12'12" 59.2" (RT)$   
 $D = 8'11" 06.4"$   
 $L = 149.25'$   
 $T = 74.9'$   
 $R = 700.00'$

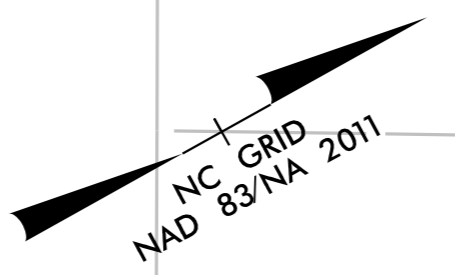
**FINAL EROSION CONTROL**

NOTE: PLACE WATTLES AT DRAINAGE OUTLETS.

NOTE: UTILIZE FABRIC INSERT INLET PROTECTION DEVICE AS DIRECTED BY ENGINEER IN LIEU OF TEMPORARY ROCK INLET SEDIMENT TRAP TYPE C TO PREVENT IMPOUNDING RUNOFF ON ROADWAYS OPEN TO THE PUBLIC.

NOTES: ANY DEVIATION FROM OPTIONS GIVEN WILL REQUIRE PRIOR APPROVAL BY ENGINEER.

ADDITIONAL EROSION CONTROL DEVICES MAY NEED TO BE INSTALLED AS DIRECTED BY THE ENGINEER.



5/14/2022

4/1/2022