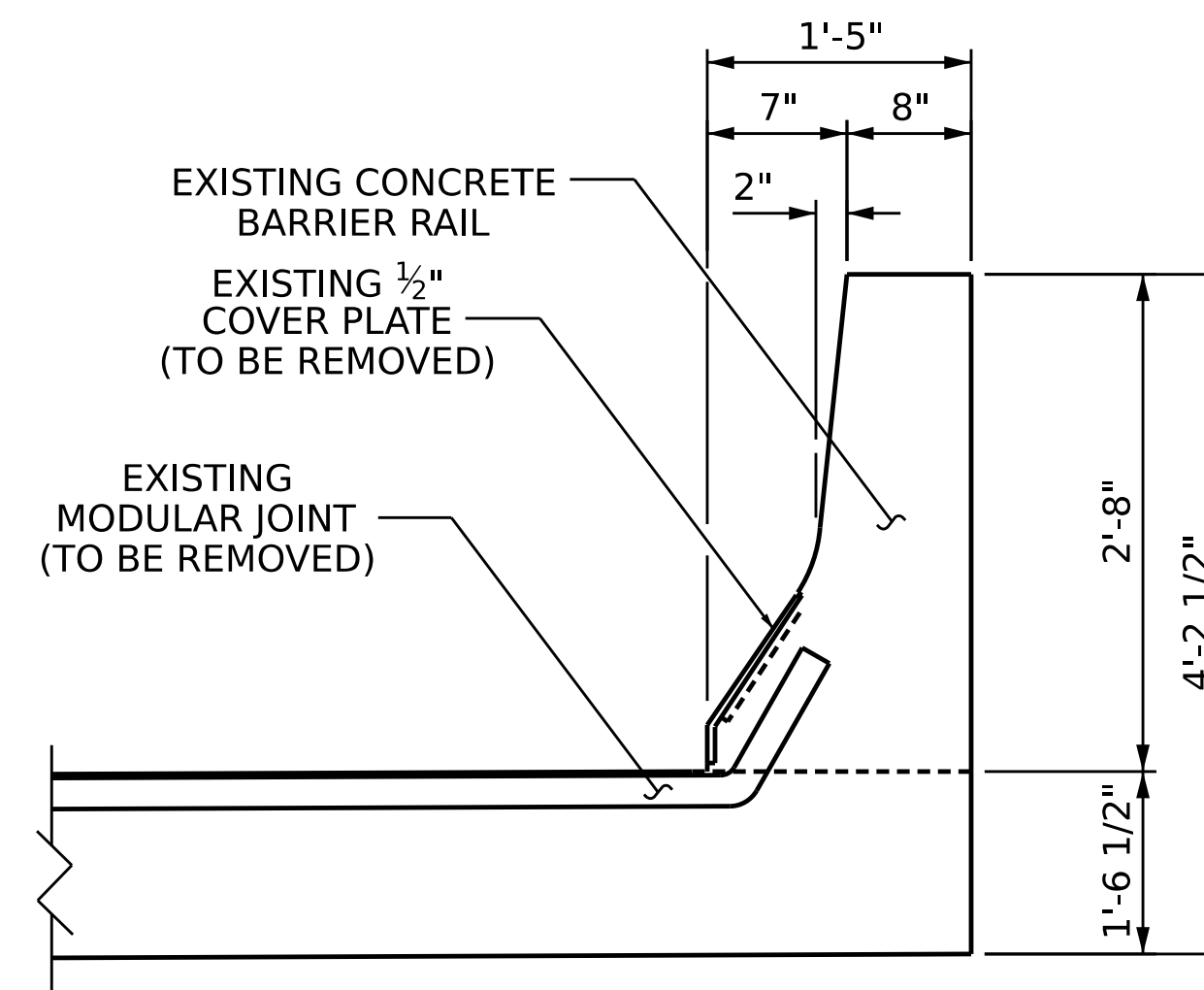
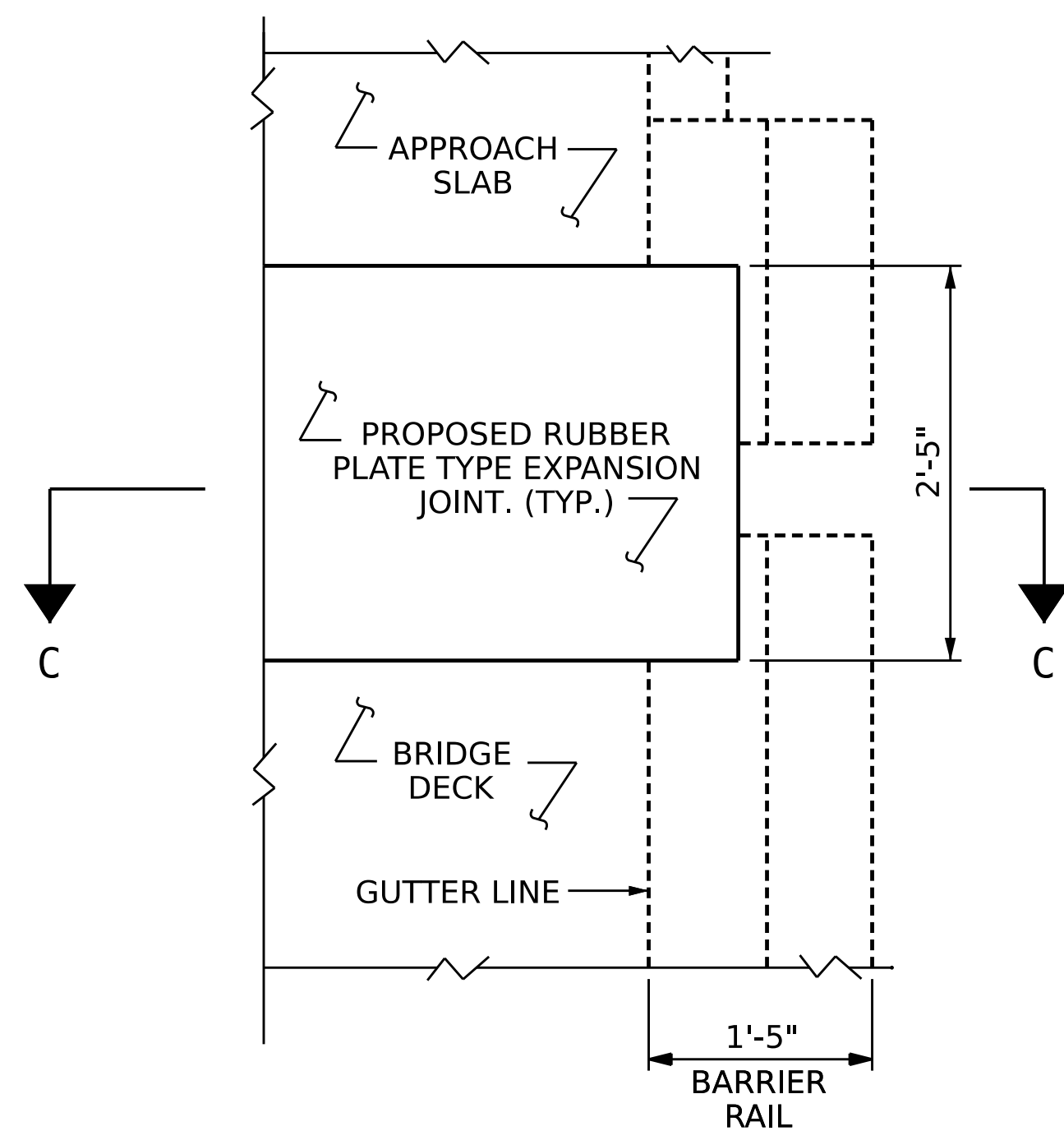


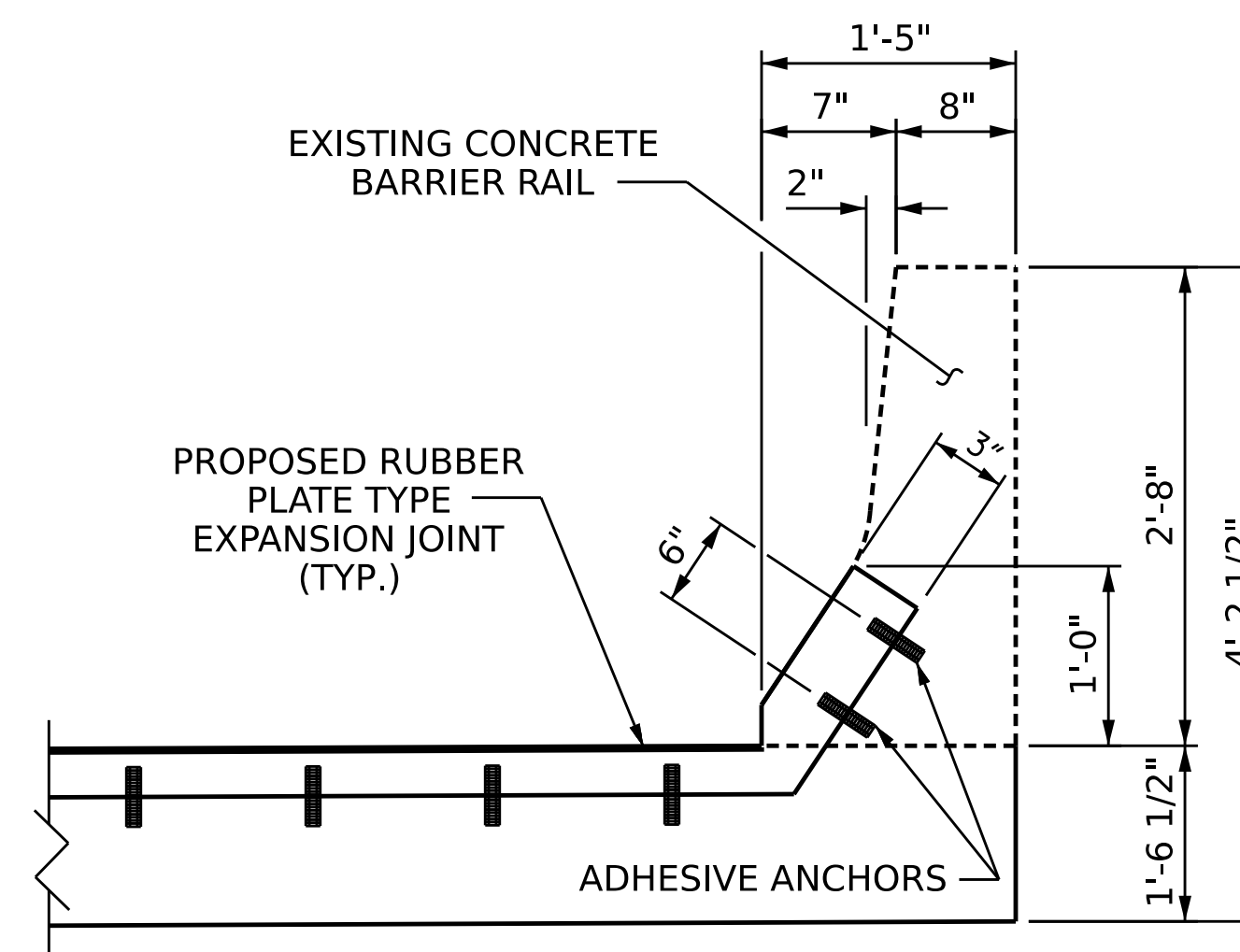
PLAN OF EXISTING MODULAR EXPANSION JOINT SEAL



SECTION B-B



PLAN OF PROPOSED EXPANSION JOINT SEAL



SECTION C-C

(THE NEW RUBBER PLATE BRIDGE JOINT SHALL BE TURNED UP AND FLUSH WITH THE FACE OF THE BARRIER)

NOTES

THE CONTRACTOR SHALL CUT THE EXISTING #5 "S" REBARS EXTENDING INTO THE BARRIER FROM THE DECK AND THE LONGITUDINAL #5 REBAR WITHIN THE LIMIT OF THE PROPOSED RUBBER PLATE JOINT. ALL EXPOSED ENDS OF THESE BARS SHALL BE COATED WITH EPOXY PRIOR TO THE NEW JOINT MATERIAL INSTALLATION.

FOR JOINT REPAIRS, SEE SPECIAL PROVISIONS.

FOR CONCRETE FOR DECK REPAIR, SEE SPECIAL PROVISIONS.

PROJECT NO. **I-5831A**

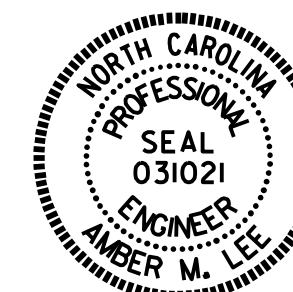
**MADISON** COUNTY

STATION: **560547**

SHEET 3 OF 3

STATE OF NORTH CAROLINA  
DEPARTMENT OF TRANSPORTATION  
RALEIGH

**JOINT DETAIL AT  
THE BARRIER RAIL  
END BENT 1  
END BENT 2 SIMILAR**



DocuSigned by:  
Amber M. Lee  
03/18/2022

DOCUMENT NOT CONSIDERED  
FINAL UNLESS ALL  
SIGNATURES COMPLETED

REVISIONS						SHEET NO.
NO.	BY:	DATE:	NO.	BY:	DATE:	S3-14
1			3			TOTAL SHEETS
2			4			24

DRAWN BY : **A. SORSENGINH** DATE : **2/2022**  
CHECKED BY : **H. A. LOCKLEAR** DATE : **2/2022**