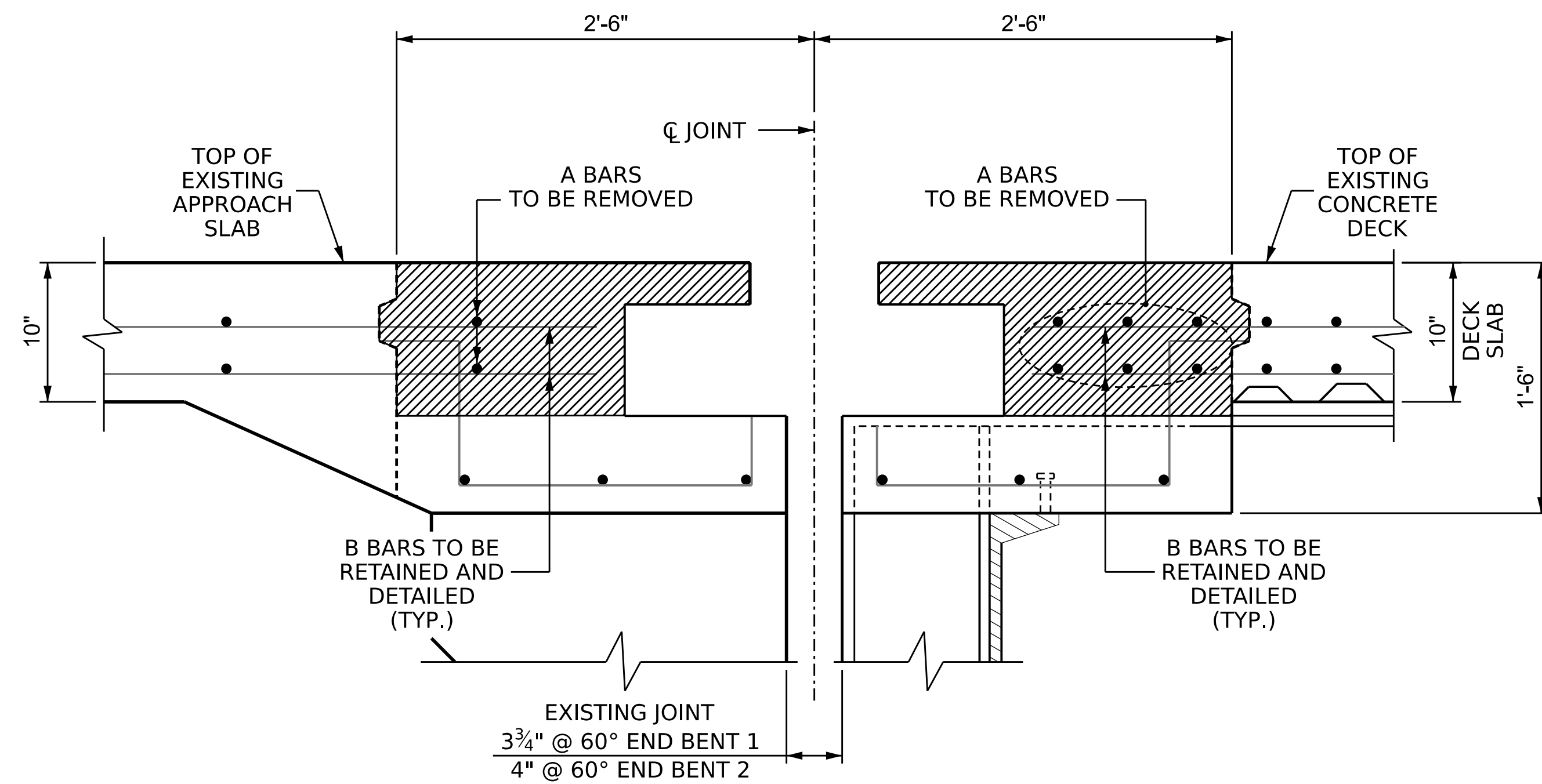
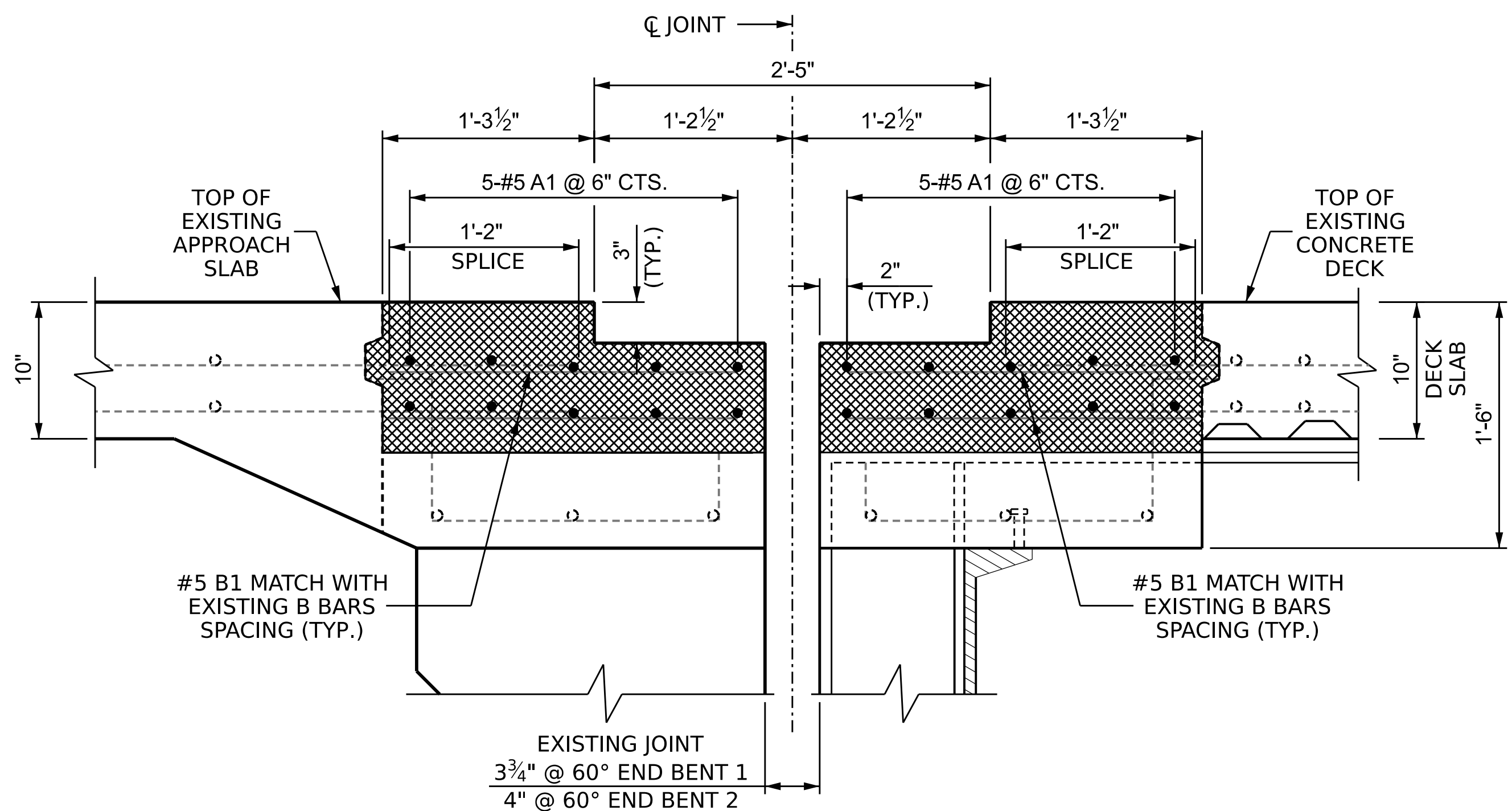


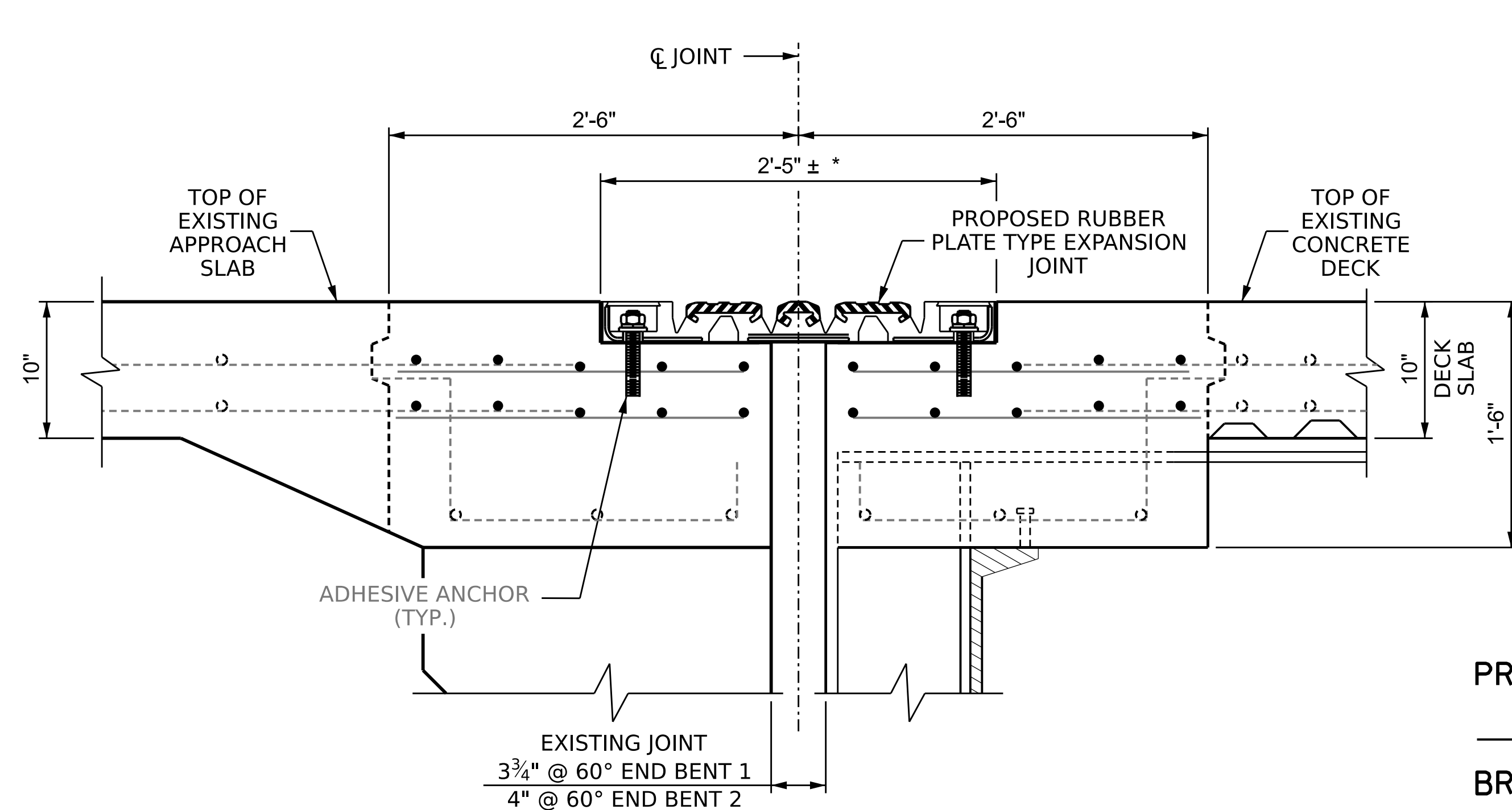
EXISTING MODULAR JOINT
(AT MODULAR JT. BOXES)



MODULAR JOINT REMOVED
(AT MODULAR JT. BOXES)



CONCRETE AND REINFORCING STEEL REPLACEMENT
(AT MODULAR JT. BOXES)



PROPOSED JOINT REPAIR
(AT MODULAR JT. BOXES)
(REINFORCING MAY BE SHIFTED SLIGHTLY)

NOTES
EXISTING MODULAR EXPANSION JOINT DETAIL ARE SHOWN FOR INFORMATION ONLY. ACTUAL FIELD CONDITIONS MAY VARY. THE CONTRACTOR SHALL HAVE NO CLAIM WHATSOEVER AGAINST THE DEPARTMENT IF ACTUAL CONDITIONS VARY FROM WHAT IS SHOWN IN THESE PLANS.

THE CONTRACTOR SHALL HAVE A REPRESENTATIVE FROM THE JOINT MANUFACTURER PRESENT DURING INSTALLATION OF PROPOSED EXPANSION JOINT SEAL.

ALL EXPOSED ENDS OF CUT BARS SHALL BE COATED WITH EPOXY PRIOR TO THE NEW JOINT MATERIAL INSTALLATION.

THE CONTRACTOR SHALL PREPARE THE BOTTOM SURFACE OF BLOCKOUT TO BE PARALLEL WITH THE PLANE OF THE ROADWAY AND PROVIDE A UNIFORM SURFACE.

ALL EXPOSED ENDS OF CUT BARS SHALL BE COATED WITH EPOXY PRIOR TO THE NEW JOINT MATERIAL INSTALLATION.

FOR JOINT REPAIR, SEE SPECIAL PROVISIONS.

FOR JOINT REPAIR QUANTITIES, SEE SHEET S3-13.

FOR CONCRETE FOR DECK REPAIR, SEE SPECIAL PROVISIONS.

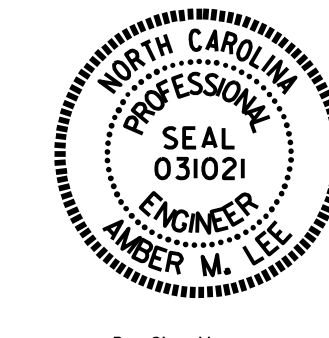
- EXISTING CONCRETE TO BE REMOVED
- NEW CONCRETE FOR DECK REPAIR

* TO BE VERIFIED BY MANUFACTURER

SECTION A-A

PROJECT NO. **I-5831A**
MADISON COUNTY
BRIDGE NO. **560547**

SHEET 1 OF 3



STATE OF NORTH CAROLINA
DEPARTMENT OF TRANSPORTATION
RALEIGH
**END BENTS
MODULAR JOINT
REPLACEMENT**

DRAWN BY : A. SORSENGINH DATE : 2/2022
CHECKED BY : H. A. LOCKLEAR DATE : 2/2022

| REVISIONS | | | | SHEET NO. |
|-----------|-----|-------|-----|-----------|
| NO. | BY: | DATE: | NO. | DATE: |
| 1 | | | 3 | |
| 2 | | | 4 | |

DOCUMENT NOT CONSIDERED FINAL UNLESS ALL SIGNATURES COMPLETED