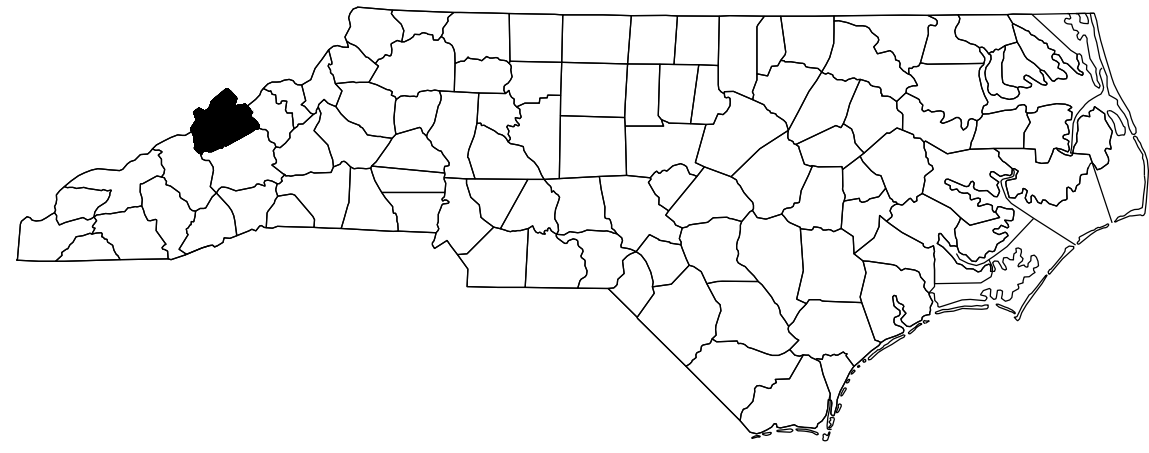


**PROJECT: I-5831A**

**CONTRACT NO.: C204709**



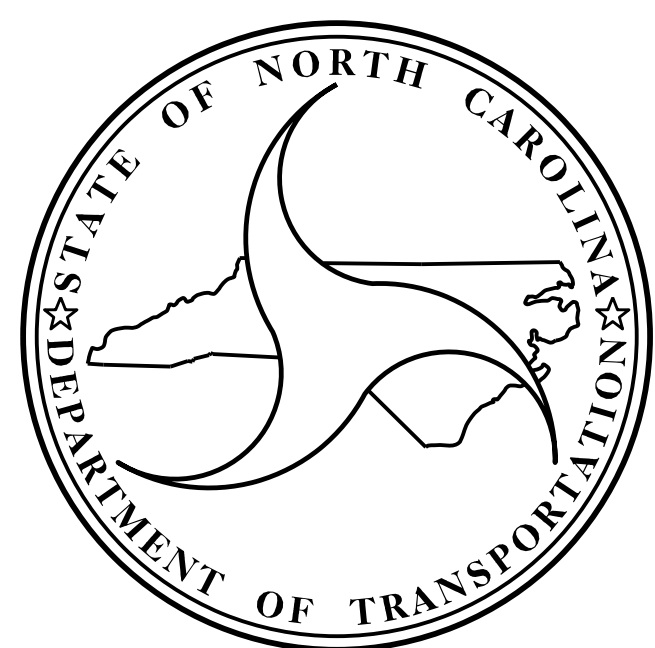
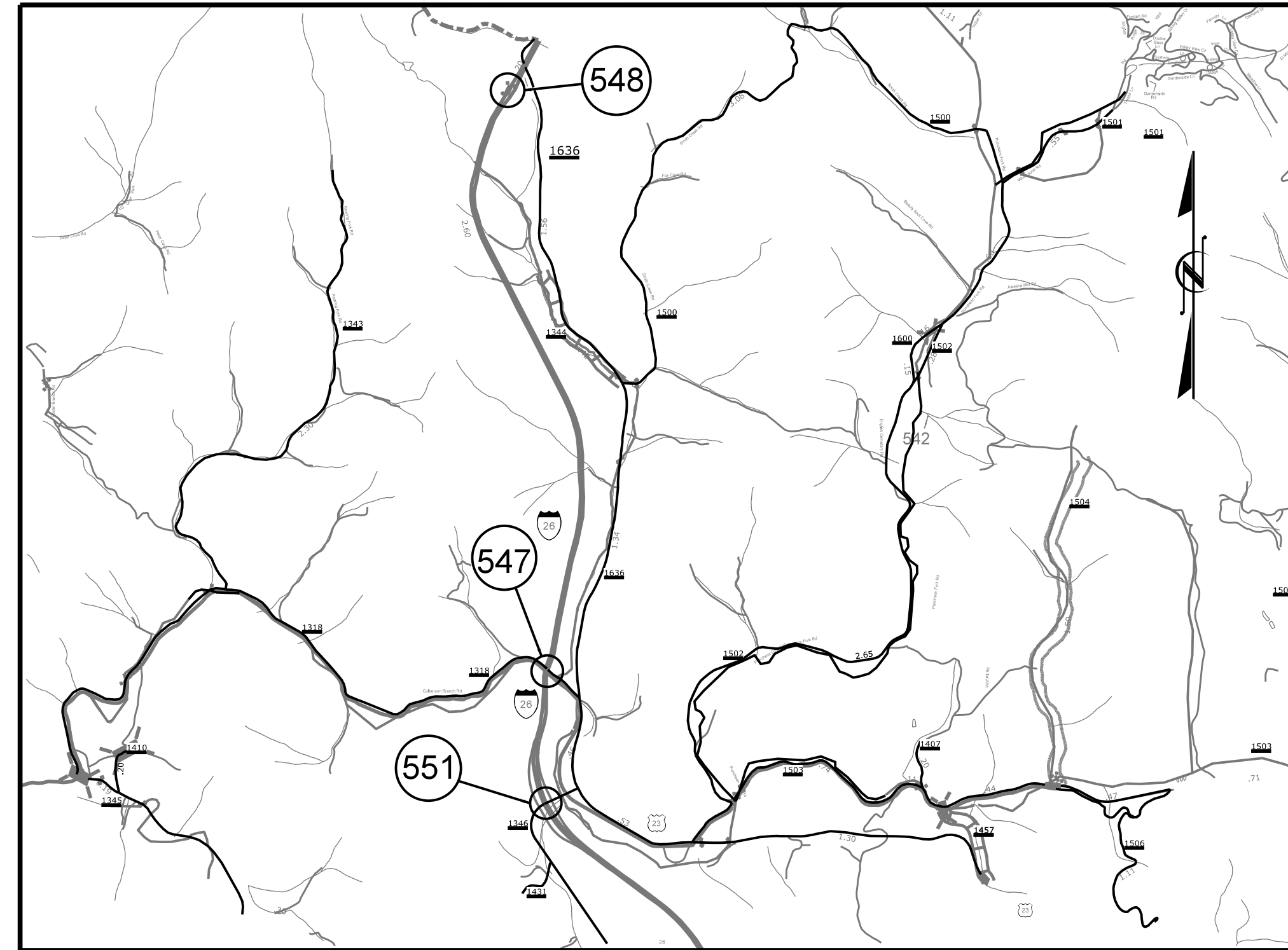
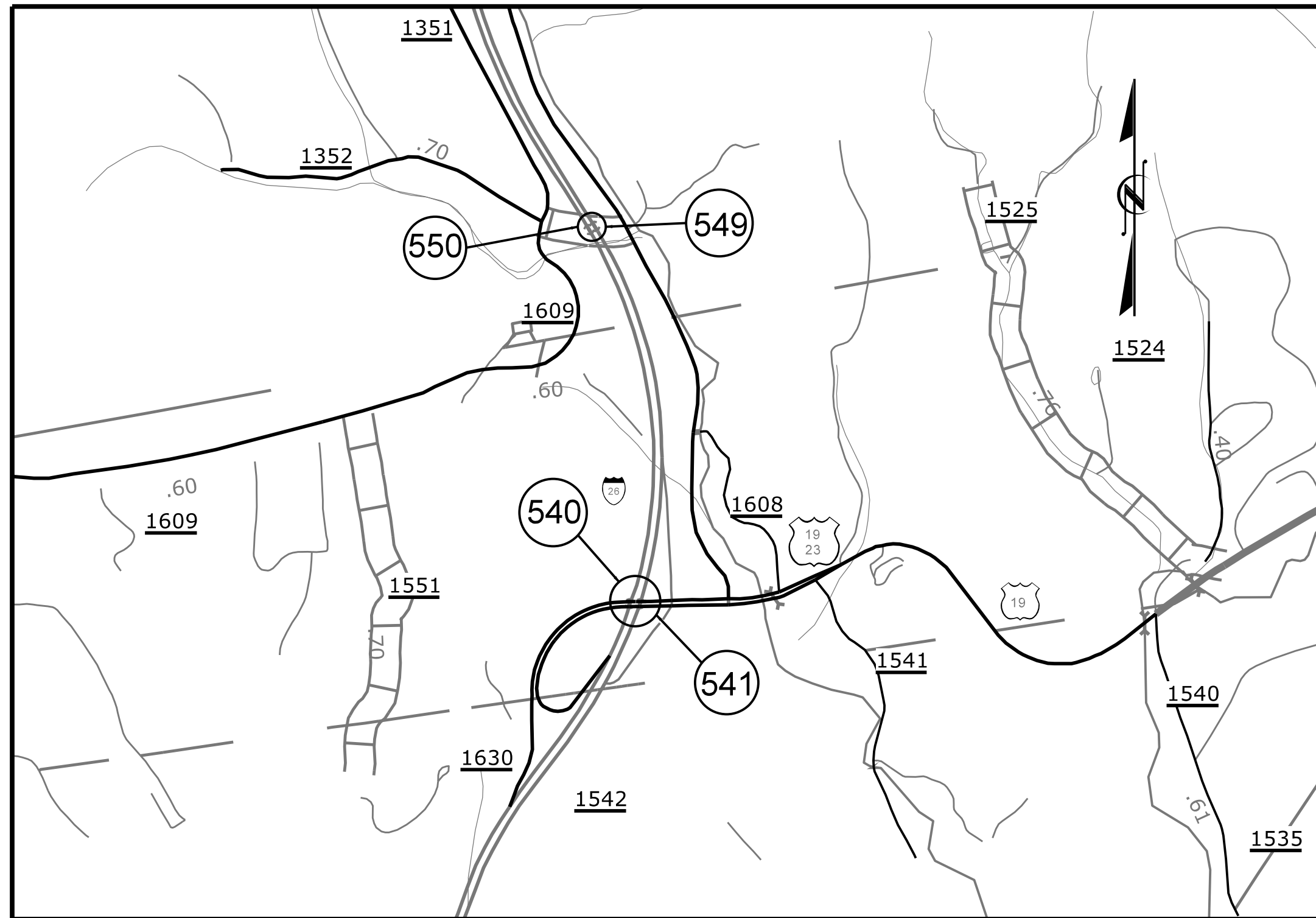
STATE OF NORTH CAROLINA  
DIVISION OF HIGHWAYS

**MADISON COUNTY**

STATE	STATE PROJECT REFERENCE NO.	SHEET NO.	TOTAL SHEETS
N.C.	I-5831A	1	
STATE PROJ. NO.	F.A. PROJ. NO.	DESCRIPTION	
53037.1.2	-	P.E.	
53037.3.2	0026020	CONST.	

**LOCATION:** BRIDGE No. 560540 ON I-26 EASTBOUND / US-23 OVER US-19  
 BRIDGE No. 560541 ON I-26 WESTBOUND / US-23 OVER US-19  
 BRIDGE No. 560547 ON I-26 OVER SR-1318 (BIG LAUREL RD.) & BIG LAUREL CREEK  
 BRIDGE No. 560548 ON I-26 OVER US-23  
 BRIDGE No. 560549 ON I-26 WESTBOUND OVER SR-1352 (HIGGINS BRANCH RD.)  
 BRIDGE No. 560550 ON I-26 EASTBOUND OVER SR 1352 (HIGGINS BRANCH RD.)  
 BRIDGE No. 560551 ON I-26 OVER SR-1346 (BEAR BRANCH RD.)

**TYPE OF WORK:** BRIDGE PRESERVATION: DECK REPAIR, LATEX MODIFIED CONCRETE- EARLY STRENGTH (LMC-ES) OVERLAY, JOINT REPAIR AND PAINTING OF EXISTING BRIDGE STRUCTURE.



**DESIGN DATA**

MADISON COUNTY  
 BRIDGE No. 560540 ADT 2018 =10,750  
 BRIDGE No. 560541 ADT 2018 =10,750  
 BRIDGE No. 560547 ADT 2013 =10,000  
 BRIDGE No. 560548 ADT 2013 =10,000  
 BRIDGE No. 560549 ADT 2018 =10,750  
 BRIDGE No. 560550 ADT 2013 =10,000  
 BRIDGE No. 560551 ADT 2013 =10,000

**PROJECT LENGTH**

MADISON COUNTY  
 BRIDGE No. 560540 =0.029 MILE  
 BRIDGE No. 560541 =0.031 MILE  
 BRIDGE No. 560547 =0.188 MILE  
 BRIDGE No. 560548 =0.029 MILE  
 BRIDGE No. 560549 =0.031 MILE  
 BRIDGE No. 560550 =0.025 MILE  
 BRIDGE No. 560551 =0.023 MILE

Prepared in the Office of:  
**DIVISION OF HIGHWAYS**  
 STRUCTURES MANAGEMENT UNIT  
 1000 BIRCH RIDGE DR.  
 RALEIGH, N.C. 27610

2018 STANDARD SPECIFICATIONS

LETTING DATE :

MAY 17, 2022

ADAM COLE, P.E.  
 PROJECT ENGINEER

AMBER LEE, P.E.  
 PROJECT DESIGN ENGINEER