

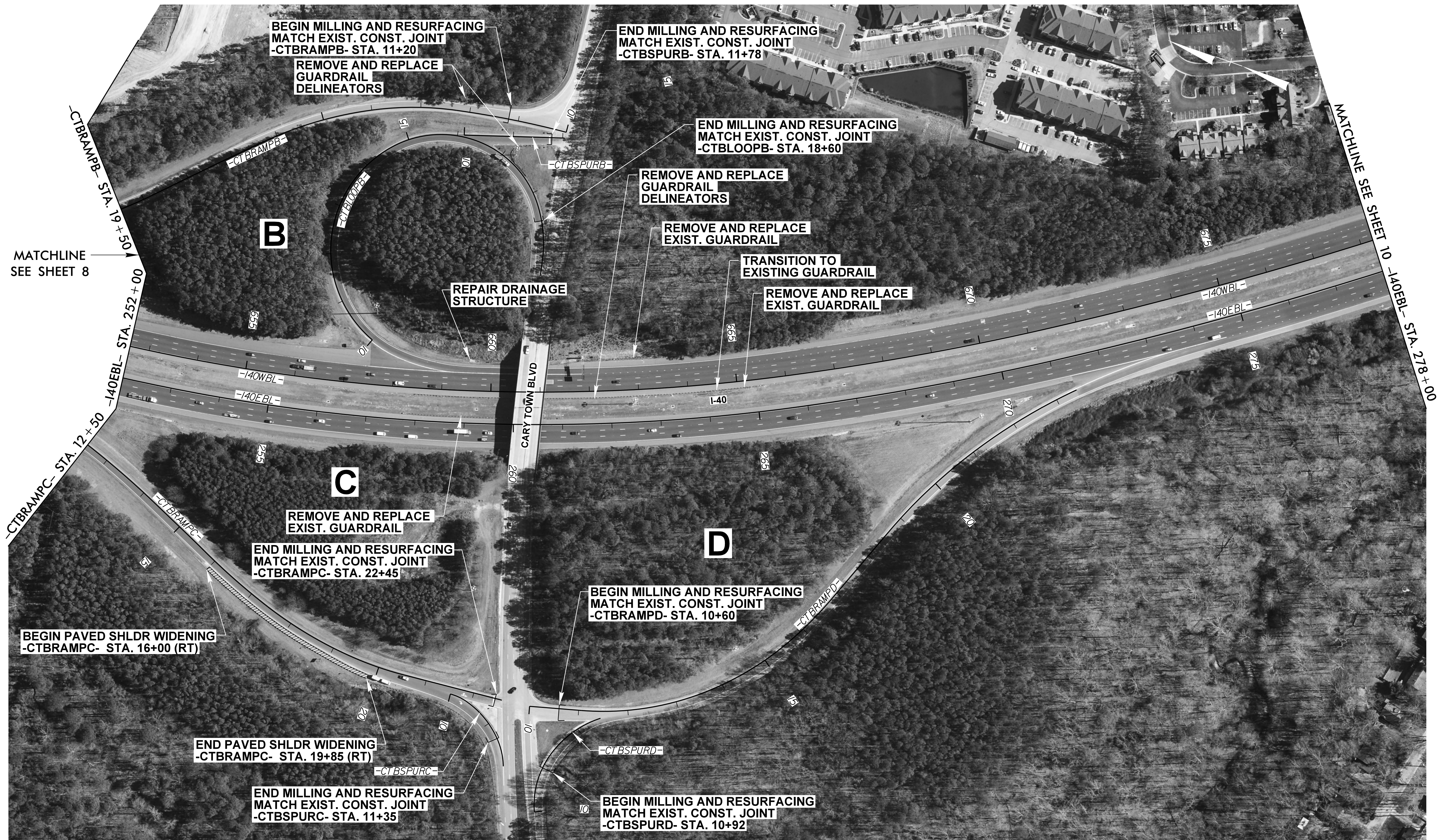
**This electronic collection of documents is provided
for the convenience of the user
and is Not a Certified Document –**

**The documents contained herein were originally issued
and sealed by the individuals whose names and license
numbers appear on each page, on the dates appearing
with their signature on that page.**

**This file or an individual page
shall not be considered a certified document.**

NOTES:

1. NO LOCATION SURVEY HAS BEEN PERFORMED ON THIS PROJECT. ALIGNMENTS SHOWN ARE INTENDED TO PROVIDE APPROXIMATE LENGTHS AND LOCATIONS ONLY.
2. PLAN STATIONS ARE APPROXIMATE AND MAY REQUIRE FIELD ADJUSTMENT AS DETERMINED BY THE ENGINEER.

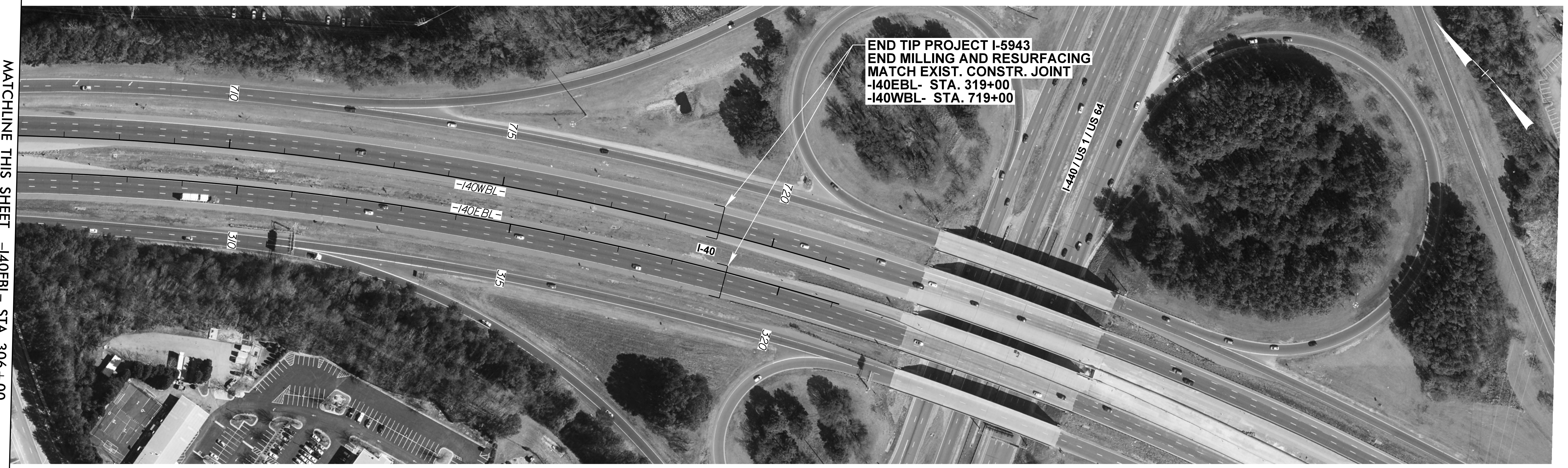
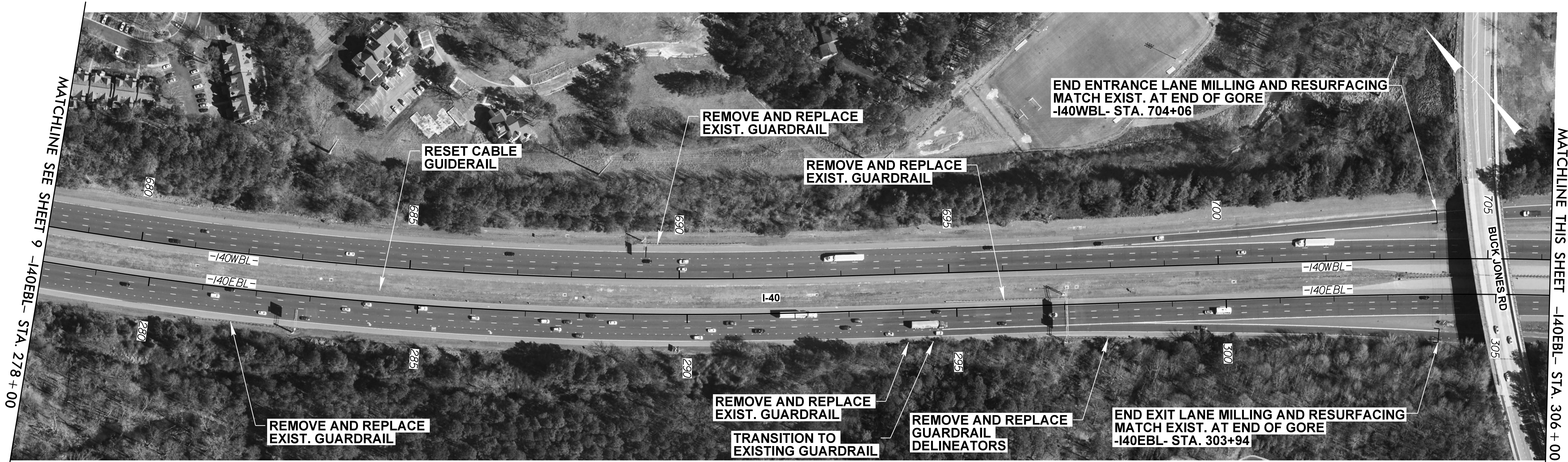


REVISIONS

8/17/99
 07-JAN-2002 13:51
 R:\Roadway\Proj\1-5943_Rdu_psh09.dgn
 (brada)

NOTES:

1. NO LOCATION SURVEY HAS BEEN PERFORMED ON THIS PROJECT. ALIGNMENTS SHOWN ARE INTENDED TO PROVIDE APPROXIMATE LENGTHS AND LOCATIONS ONLY.
2. PLAN STATIONS ARE APPROXIMATE AND MAY REQUIRE FIELD ADJUSTMENT AS DETERMINED BY THE ENGINEER.



REVISIONS

8/17/99

07-Jan-2002 13:53
R:\Roadway\Proj\I-5943_Rdu_psh10.dgn
brada