

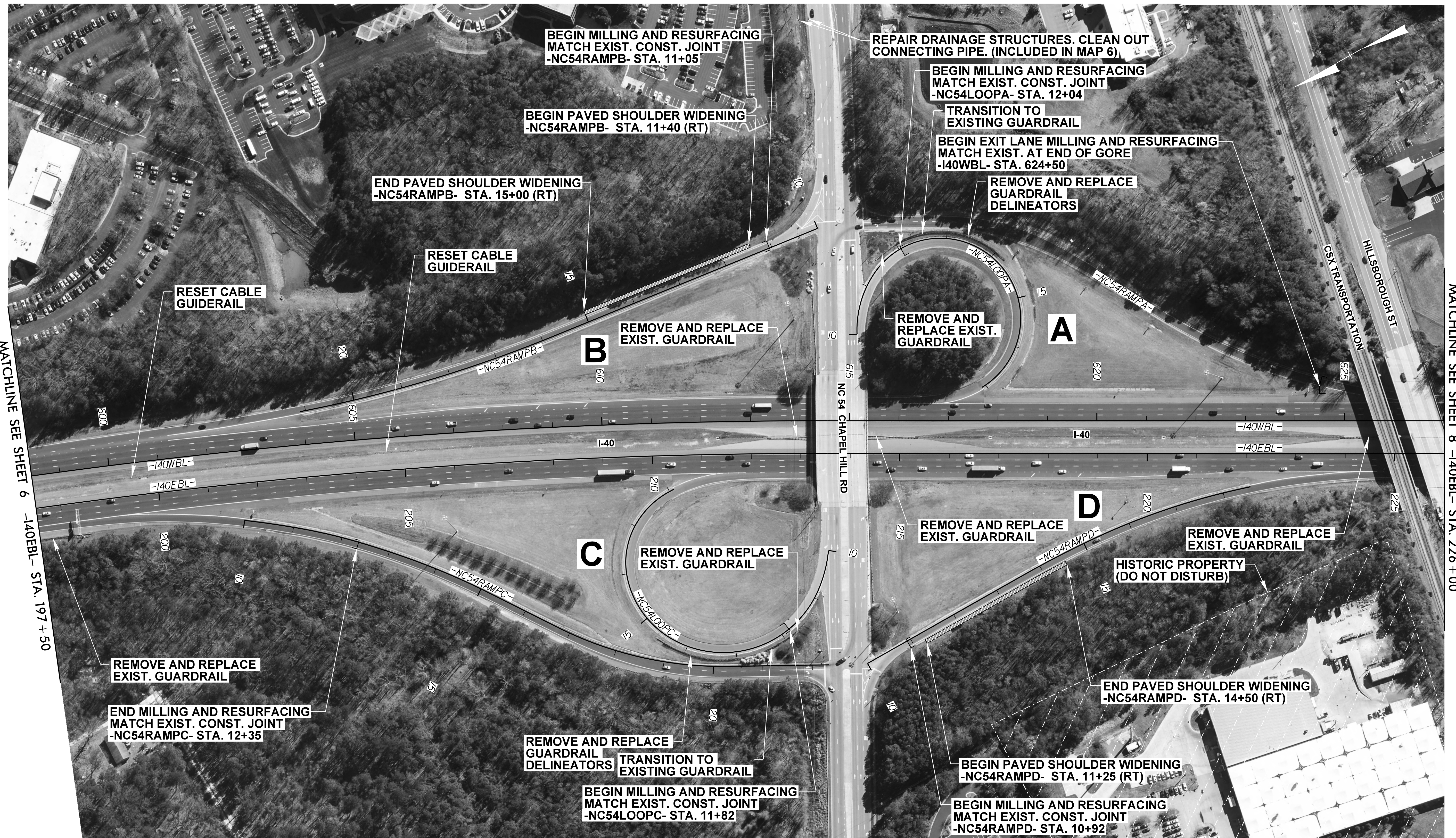
**This electronic collection of documents is provided  
for the convenience of the user  
and is Not a Certified Document –**

**The documents contained herein were originally issued  
and sealed by the individuals whose names and license  
numbers appear on each page, on the dates appearing  
with their signature on that page.**

**This file or an individual page  
shall not be considered a certified document.**

**NOTES:**

1. NO LOCATION SURVEY HAS BEEN PERFORMED ON THIS PROJECT. ALIGNMENTS SHOWN ARE INTENDED TO PROVIDE APPROXIMATE LENGTHS AND LOCATIONS ONLY.
2. PLAN STATIONS ARE APPROXIMATE AND MAY REQUIRE FIELD ADJUSTMENT AS DETERMINED BY THE ENGINEER.



REVISIONS

MATCHLINE SEE SHEET 6 -140EBL- STA. 197+50

MATCHLINE SEE SHEET 8 -140EBL- STA. 226+00

8/17/99  
 07-JAN-2002 15:48  
 R:\Roadway\Projects\1-5943\_Rdu\psh07.dgn  
 (brada)

**NOTES:**

1. NO LOCATION SURVEY HAS BEEN PERFORMED ON THIS PROJECT. ALIGNMENTS SHOWN ARE INTENDED TO PROVIDE APPROXIMATE LENGTHS AND LOCATIONS ONLY.
2. PLAN STATIONS ARE APPROXIMATE AND MAY REQUIRE FIELD ADJUSTMENT AS DETERMINED BY THE ENGINEER.



REVISIONS

8/17/99  
 07-JAN-2002 13:50  
 R:\Roadway\Projects\1-5943\_Rdu\_psh\08.dgn  
 (brada)