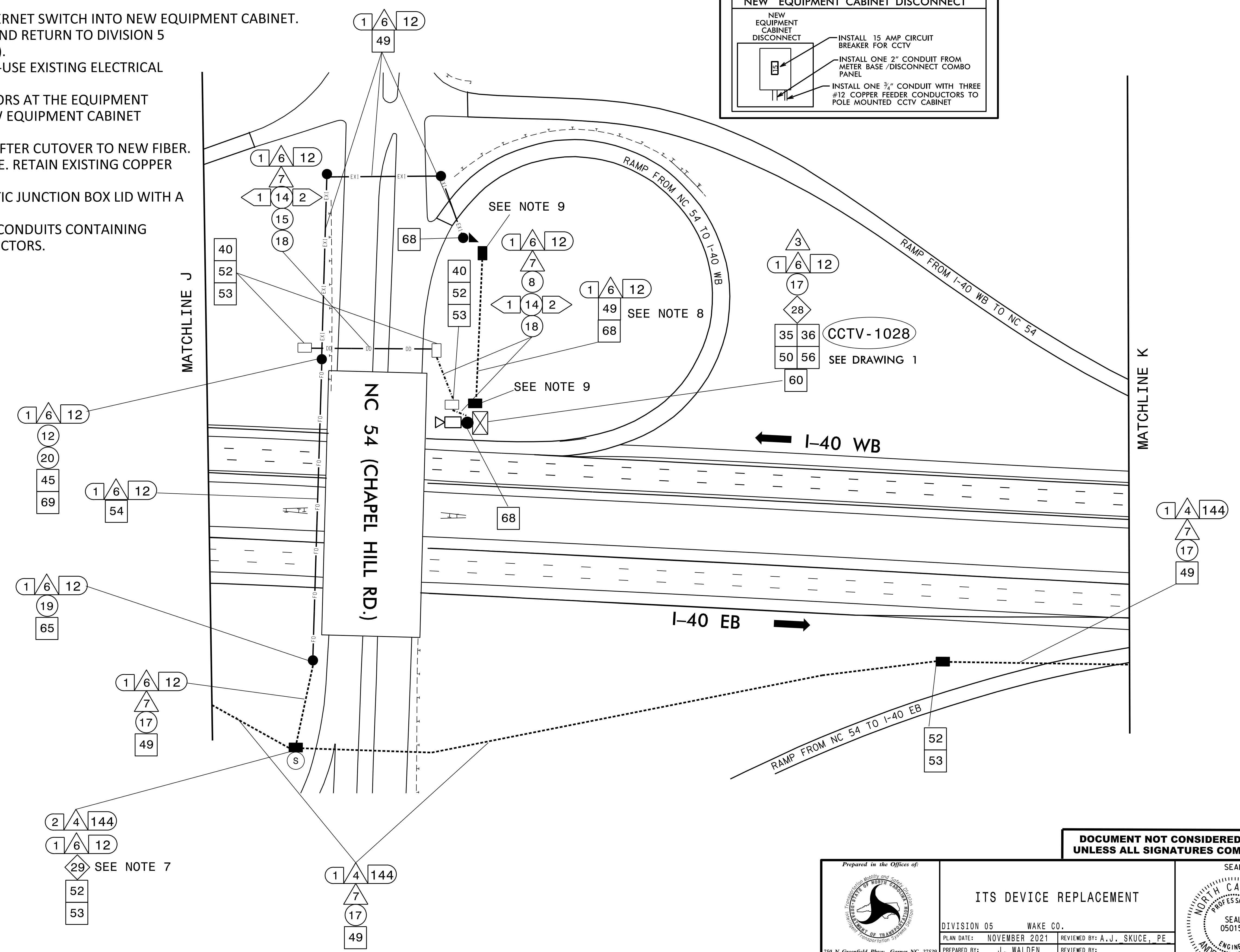
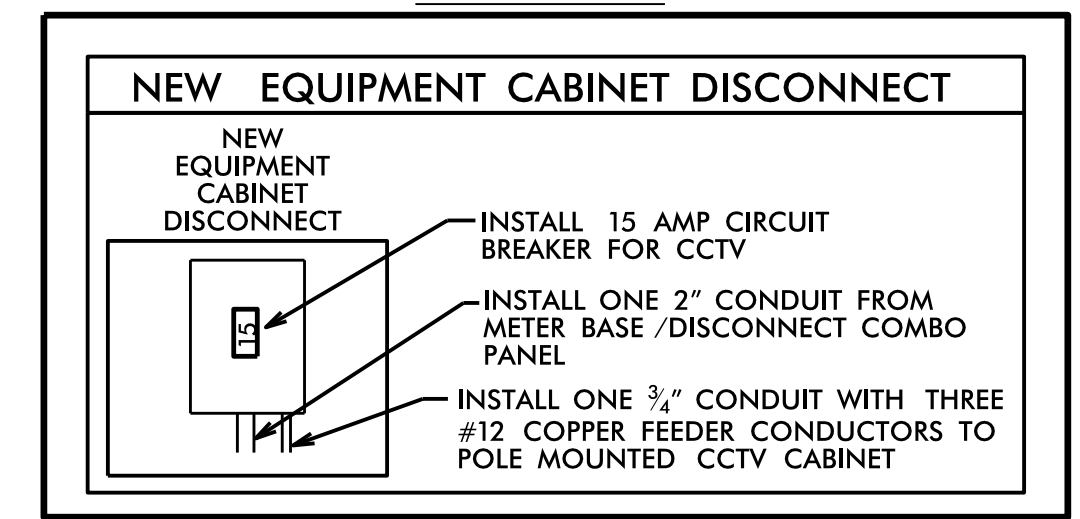


**NOTES**

1. REMOVE EXISTING CCTV CAMERA ASSEMBLY, EQUIPMENT CABINET, AND INTERCONNECT CENTER.
2. INSTALL NEW CCTV CAMERA ASSEMBLY AND EQUIPMENT CABINET ON EXISTING CCTV WOOD POLE.
3. INSTALL NEW INTERCONNECT AND ETHERNET SWITCH INTO NEW EQUIPMENT CABINET.
4. REMOVE EXISTING ETHERNET SWITCH AND RETURN TO DIVISION 5 REGIONAL ITS ENGINEER (919-825-2635).
5. CONTRACTOR SHALL MAINTAIN AND RE-USE EXISTING ELECTRICAL SERVICE AND FEEDER CONDUCTORS.
6. INTERCEPT EXISTING FEEDER CONDUCTORS AT THE EQUIPMENT CABINET LOCATION AND INSTALL A NEW EQUIPMENT CABINET DISCONNECT.
7. REMOVE EXISTING SPLICE ENCLOSURE AFTER CUTOVER TO NEW FIBER.
8. REMOVE EXISTING 12-FIBER DROP CABLE. RETAIN EXISTING COPPER FEEDER CONDUCTORS.
9. REPLACE EXISTING OVER-SIZE FIBER-OPTIC JUNCTION BOX LID WITH A NEW LID WITH "ELECTRICAL" LOGO.
10. INSTALL MOLDABLE DUCT SEAL ON ALL CONDUITS CONTAINING FIBER OPTIC CABLE AND FEEDER CONDUCTORS.

**DRAWING 1**



**DOCUMENT NOT CONSIDERED FINAL UNLESS ALL SIGNATURES COMPLETED**

|              |  |  |
|--------------|--|--|
|              | <b>ITS DEVICE REPLACEMENT</b>  |  |
|              | DIVISION 05 WAKE CO.<br>PLAN DATE: NOVEMBER 2021<br>PREPARED BY: J. WALDEN | REVIEWED BY: A. J. SKUCE, PE.<br>REVIEWED BY:                                      |
| SCALE: 0<br> | REVISIONS<br>INIT. DATE  | SEAL<br>NORTH CAROLINA<br>PROFESSIONAL ENGINEER<br>ANDREW J. SKUCE<br>Nov 30, 2021 |