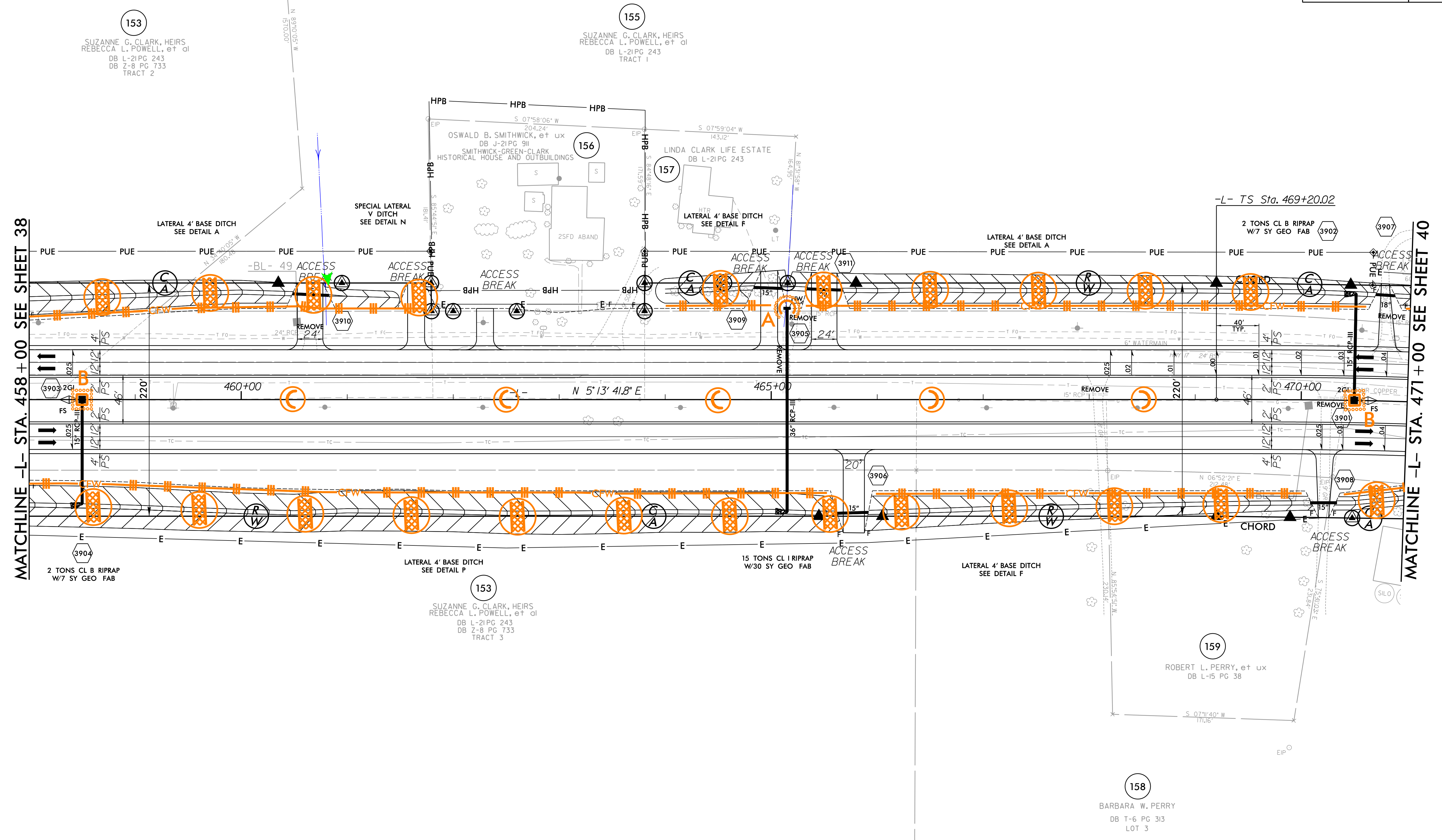


PROJECT REFERENCE NO. R-2511	SHEET NO. EC-83/CONST.39
RW SHEET NO.	
ROADWAY DESIGN ENGINEER	HYDRAULICS ENGINEER

NAD 83/2011



MATCHLINE -L- STA. 458+00 SEE SHEET 38

MATCHLINE -L- STA. 471+00 SEE SHEET 40

-L- TS Sta. 469+20.02

FOR -L- PROFILE SEE SHT. 64

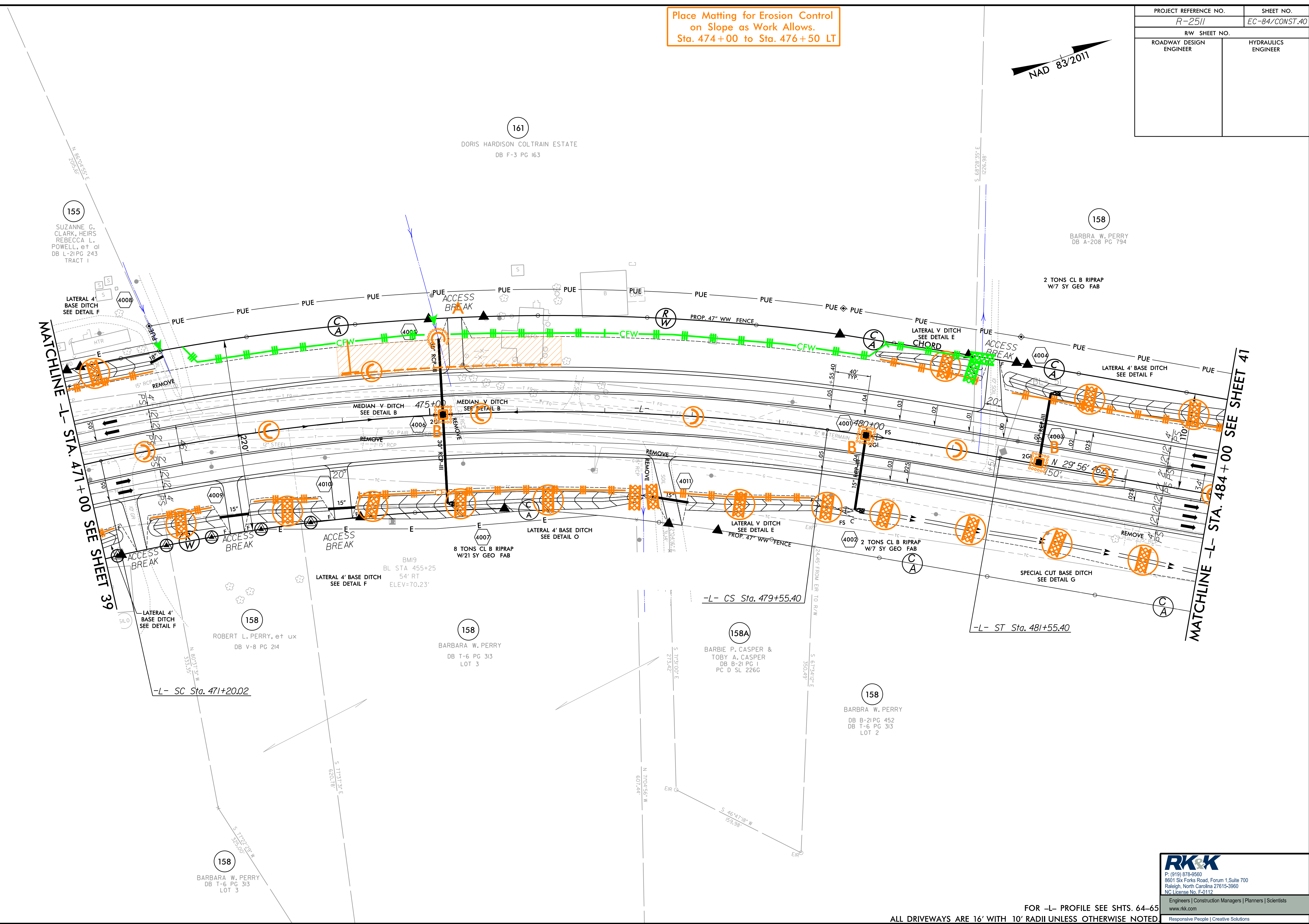
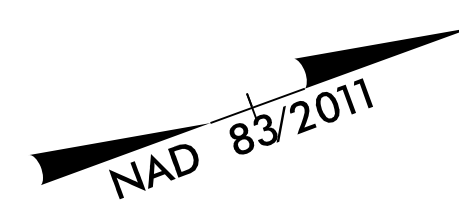
ALL DRIVEWAYS ARE 16' WITH 10' RADII UNLESS OTHERWISE NOTED

**RK&K**  
 P: (919) 878-8560  
 8601 Six Forks Road, Forum 1, Suite 700  
 Raleigh, North Carolina 27615-3960  
 NC License No. F-0112  
 Engineers | Construction Managers | Planners | Scientists  
 www.rkk.com  
 Responsive People | Creative Solutions

8/17/99  
 R:\2021\Projects\15\1511\EC\_PSHL\_83.dgn  
 8/17/2021  
 R:\2021\Projects\15\1511\EC\_PSHL\_83.dgn

PROJECT REFERENCE NO. R-2511	SHEET NO. EC-84/CONST.40
RW SHEET NO.	HYDRAULICS ENGINEER
ROADWAY DESIGN ENGINEER	

Place Matting for Erosion Control  
on Slope as Work Allows.  
Sta. 474+00 to Sta. 476+50 LT



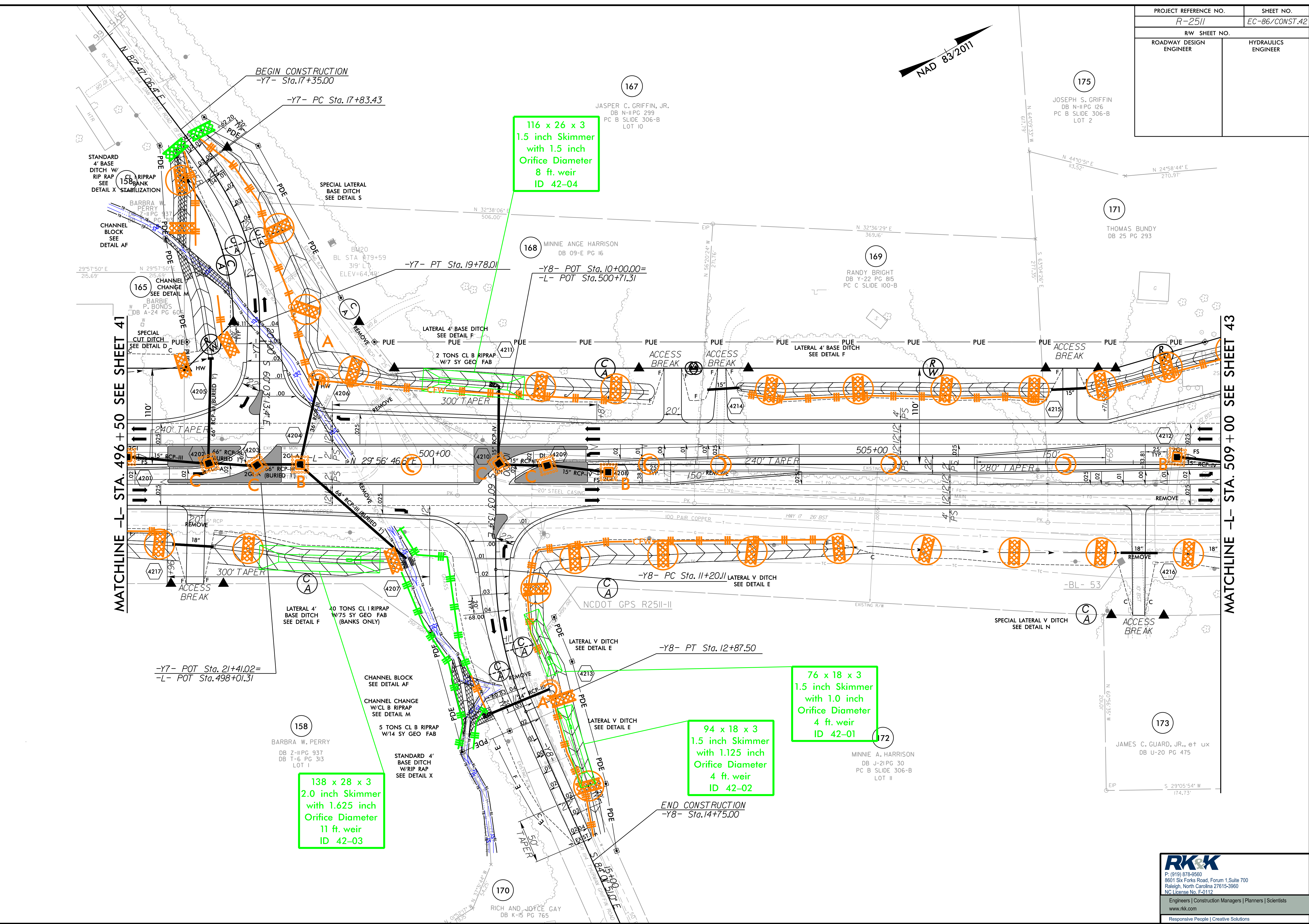
8/17/99  
8/2/2021  
C:\projects\2511\EC\_PSHL\_84.dgn

**RK&K**  
 P: (919) 878-8560  
 8601 Six Forks Road, Forum 1, Suite 700  
 Raleigh, North Carolina 27615-3960  
 NC License No. F-0112  
 Engineers | Construction Managers | Planners | Scientists  
 www.rkk.com  
 Responsive People | Creative Solutions

FOR -L- PROFILE SEE SHTS. 64-65  
 ALL DRIVEWAYS ARE 16' WITH 10' RADII UNLESS OTHERWISE NOTED



PROJECT REFERENCE NO.	SHEET NO.
R-2511	EC-86/CONST.42
RW SHEET NO.	HYDRAULICS ENGINEER
ROADWAY DESIGN ENGINEER	



116 x 26 x 3  
1.5 inch Skimmer  
with 1.5 inch  
Orifice Diameter  
8 ft. weir  
ID 42-04

76 x 18 x 3  
1.5 inch Skimmer  
with 1.0 inch  
Orifice Diameter  
4 ft. weir  
ID 42-01

94 x 18 x 3  
1.5 inch Skimmer  
with 1.125 inch  
Orifice Diameter  
4 ft. weir  
ID 42-02

138 x 28 x 3  
2.0 inch Skimmer  
with 1.625 inch  
Orifice Diameter  
11 ft. weir  
ID 42-03

8/17/99  
8/2/2021  
C:\Users\jcs\CADD\PSH\Eroston\_Contr01\2511\_EC\_PSH\_86.dgn

**RK&K**  
P: (919) 878-9560  
8601 Six Forks Road, Forum 1, Suite 700  
Raleigh, North Carolina 27615-3960  
NC License No. F-0112  
Engineers | Construction Managers | Planners | Scientists  
www.rkk.com  
Responsive People | Creative Solutions

PROJECT REFERENCE NO. R-2511	SHEET NO. EC-87/CONST.43
RW SHEET NO.	HYDRAULICS ENGINEER
ROADWAY DESIGN ENGINEER	



2 inch Skimmer with 1.625 inch Orifice Diameter  
8 ft. weir with 4.5 ft. weir height  
ID 43-05  
(See Earthen Dam with Skimmer Detail)

Place Matting for Erosion Control on Slope as Work Allows.  
Sta. 510+00 to Sta. 510+50 LT  
Sta. 511+50 to Sta. 512+50 RT  
Sta. 515+00 to Sta. 517+50 RT

Place Matting for Erosion Control on Slopes Adjacent to Permitted Wetlands as Work Allows.

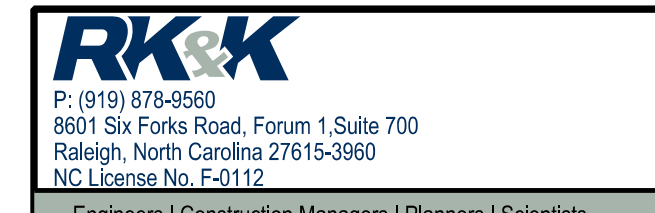
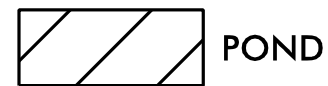
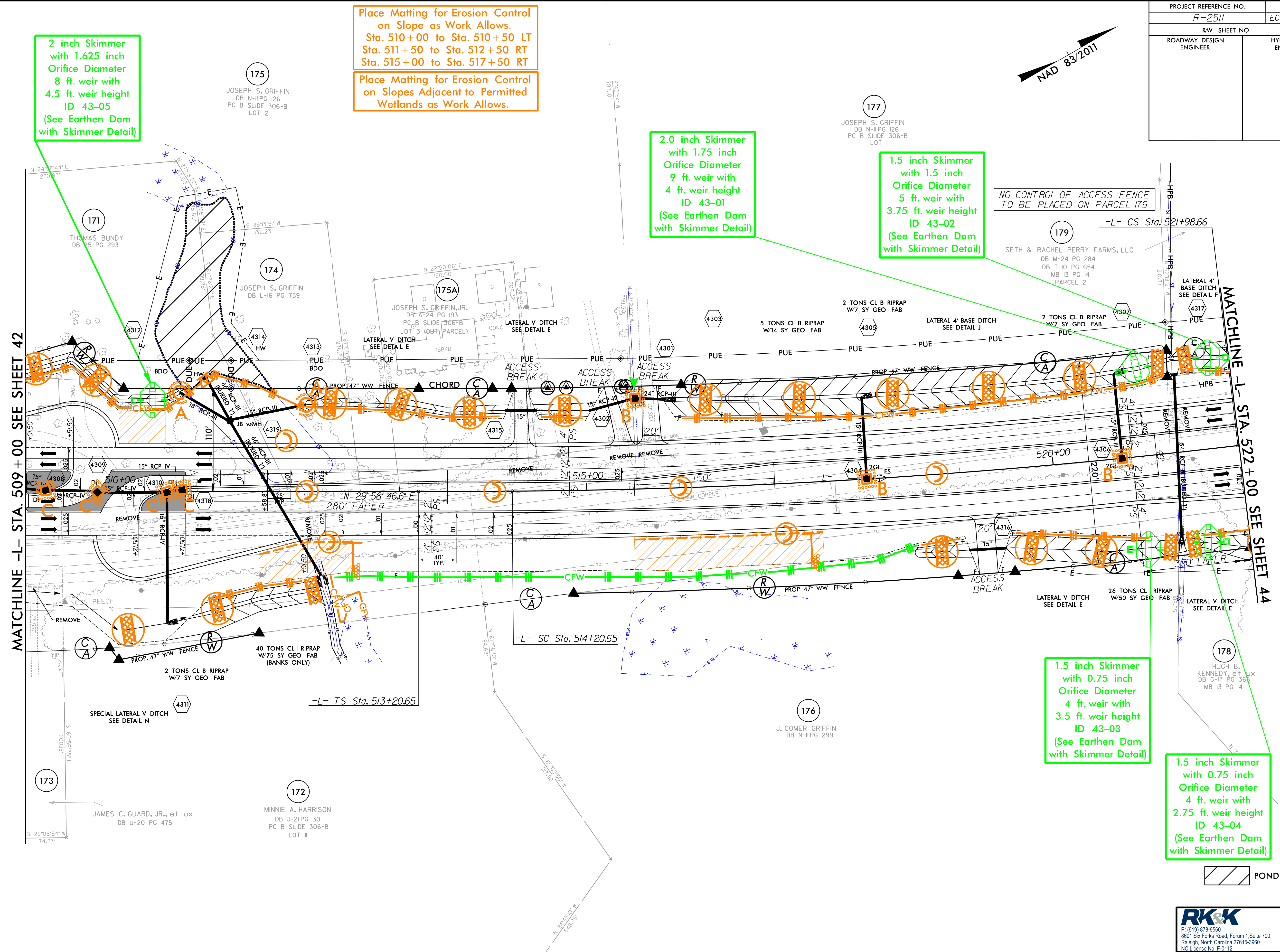
2.0 inch Skimmer with 1.75 inch Orifice Diameter  
9 ft. weir with 4 ft. weir height  
ID 43-01  
(See Earthen Dam with Skimmer Detail)

1.5 inch Skimmer with 1.5 inch Orifice Diameter  
5 ft. weir with 3.75 ft. weir height  
ID 43-02  
(See Earthen Dam with Skimmer Detail)

1.5 inch Skimmer with 0.75 inch Orifice Diameter  
4 ft. weir with 3.5 ft. weir height  
ID 43-03  
(See Earthen Dam with Skimmer Detail)

1.5 inch Skimmer with 0.75 inch Orifice Diameter  
4 ft. weir with 2.75 ft. weir height  
ID 43-04  
(See Earthen Dam with Skimmer Detail)

NO CONTROL OF ACCESS FENCE TO BE PLACED ON PARCEL 179



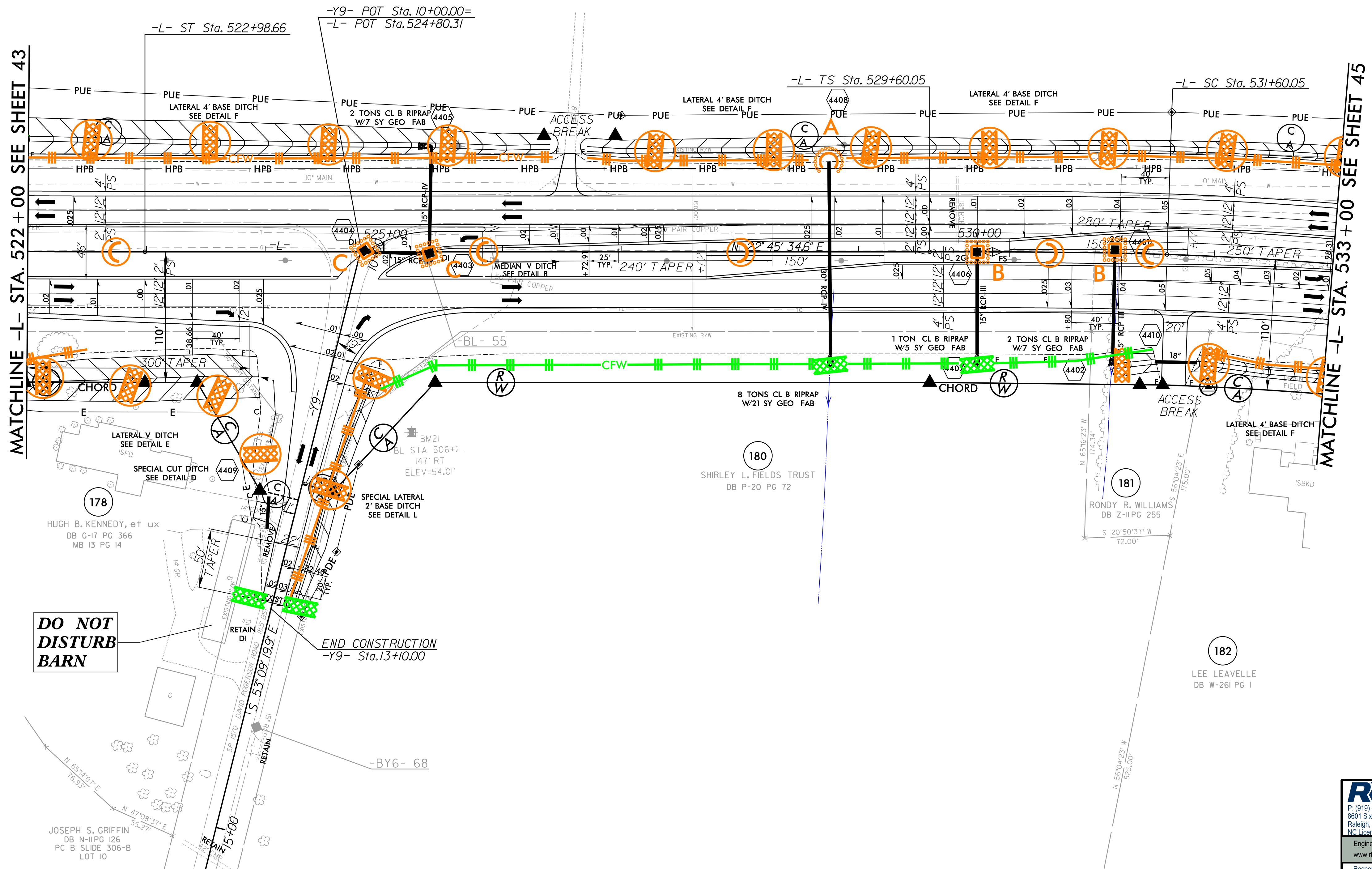
FOR -L- PROFILE SEE SHTS. 65-66  
ALL DRIVEWAYS ARE 16' WITH 10' RADII UNLESS OTHERWISE NOTED

8/17/2021 C:\Users\jcs\CADD\PSH\ER-oson\_Centrol\2511\_EC\_PSH\_87.dgn

PROJECT REFERENCE NO. R-2511	SHEET NO. EC-88/CONST.44
RW SHEET NO.	HYDRAULICS ENGINEER
ROADWAY DESIGN ENGINEER	



179  
 SETH & RACHEL PERRY FARMS, LLC  
 DB M-24 PG 284  
 DB T-10 PG 654  
 MB 13 PG 14  
 PARCEL 2  
 NO CONTROL OF ACCESS FENCE  
 TO BE PLACED ON THIS PARCEL



MATCHLINE -L- STA. 522 + 00 SEE SHEET 43

MATCHLINE -L- STA. 533 + 00 SEE SHEET 45

**DO NOT  
DISTURB  
BARN**

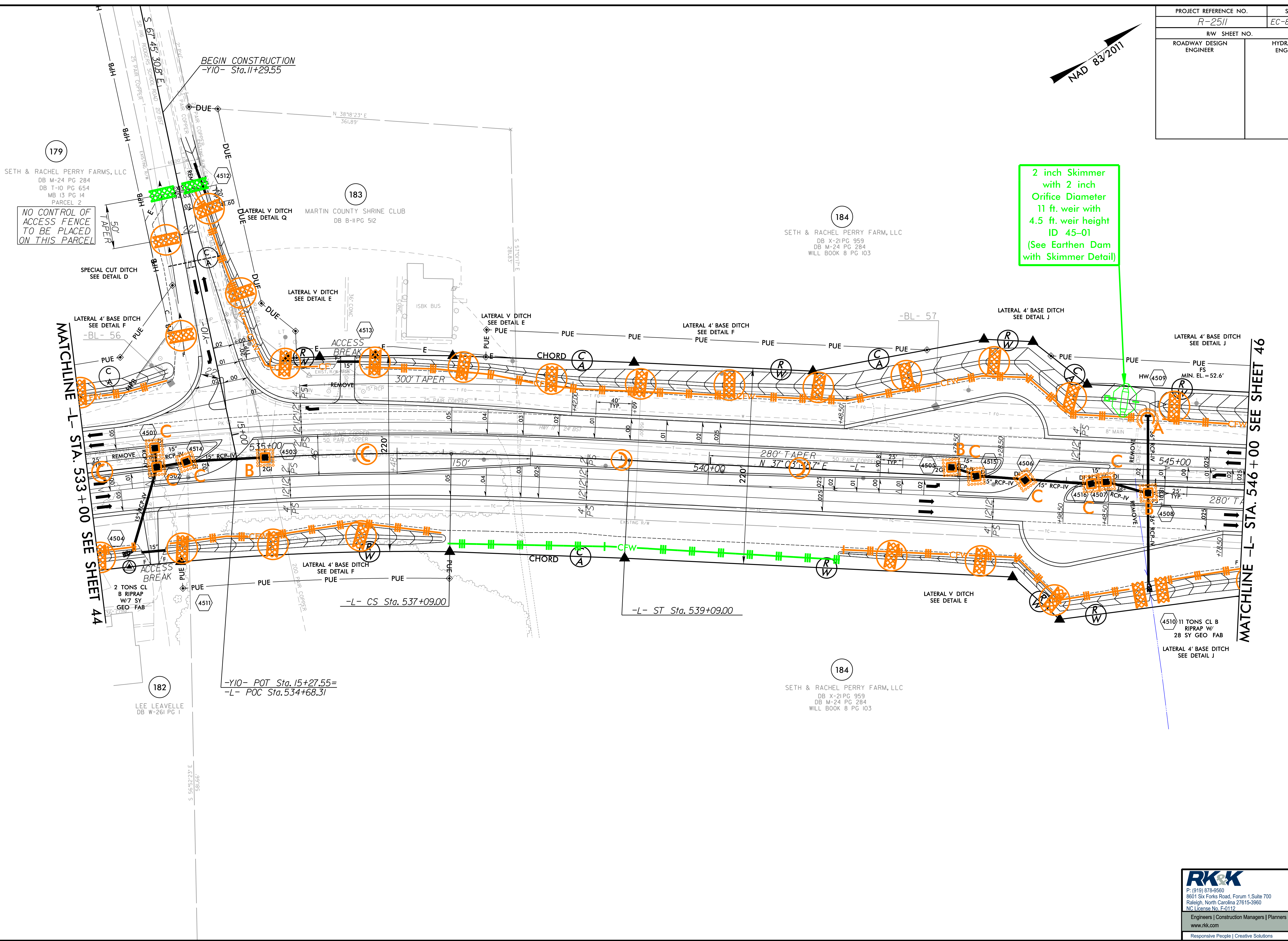
END CONSTRUCTION  
-Y9- Sta. 13+10.00

8/17/99

8/2/2021 C:\Users\jcs\CADD\PSH\ERoston\_Contr01\2511\_EC\_PSH\_88.dgn

**RK&K**  
 P: (919) 878-8560  
 8601 Six Forks Road, Forum 1, Suite 700  
 Raleigh, North Carolina 27615-3960  
 NC License No. F-0112  
 Engineers | Construction Managers | Planners | Scientists  
 www.rkk.com  
 Responsive People | Creative Solutions

PROJECT REFERENCE NO. <i>R-2511</i>	SHEET NO. <i>EC-89/CONST.45</i>
RW SHEET NO.	
ROADWAY DESIGN ENGINEER	HYDRAULICS ENGINEER



179  
SETH & RACHEL PERRY FARMS, LLC  
DB M-24 PG 284  
DB T-10 PG 654  
MB 13 PG 14  
PARCEL 2  
NO CONTROL OF ACCESS FENCE TO BE PLACED ON THIS PARCEL

183  
MARTIN COUNTY SHRINE CLUB  
DB B-11 PG 512

184  
SETH & RACHEL PERRY FARM, LLC  
DB X-21 PG 959  
DB M-24 PG 284  
WILL BOOK 8 PG 103

184  
SETH & RACHEL PERRY FARM, LLC  
DB X-21 PG 959  
DB M-24 PG 284  
WILL BOOK 8 PG 103

182  
LEE LEAVELLE  
DB W-261 PG 1

4510 11 TONS CL B RIPRAP W/ 28 SY GEO FAB  
LATERAL 4' BASE DITCH SEE DETAIL J

8/17/2021  
C:\Users\jcs\CADD\PSH\Er-oson\_Contr01\2511\_EC\_PSH\_89.dgn

**RK&K**  
P: (919) 878-9560  
8601 Six Forks Road, Forum 1, Suite 700  
Raleigh, North Carolina 27615-3960  
NC License No. F-0112  
Engineers | Construction Managers | Planners | Scientists  
www.rkk.com  
Responsive People | Creative Solutions

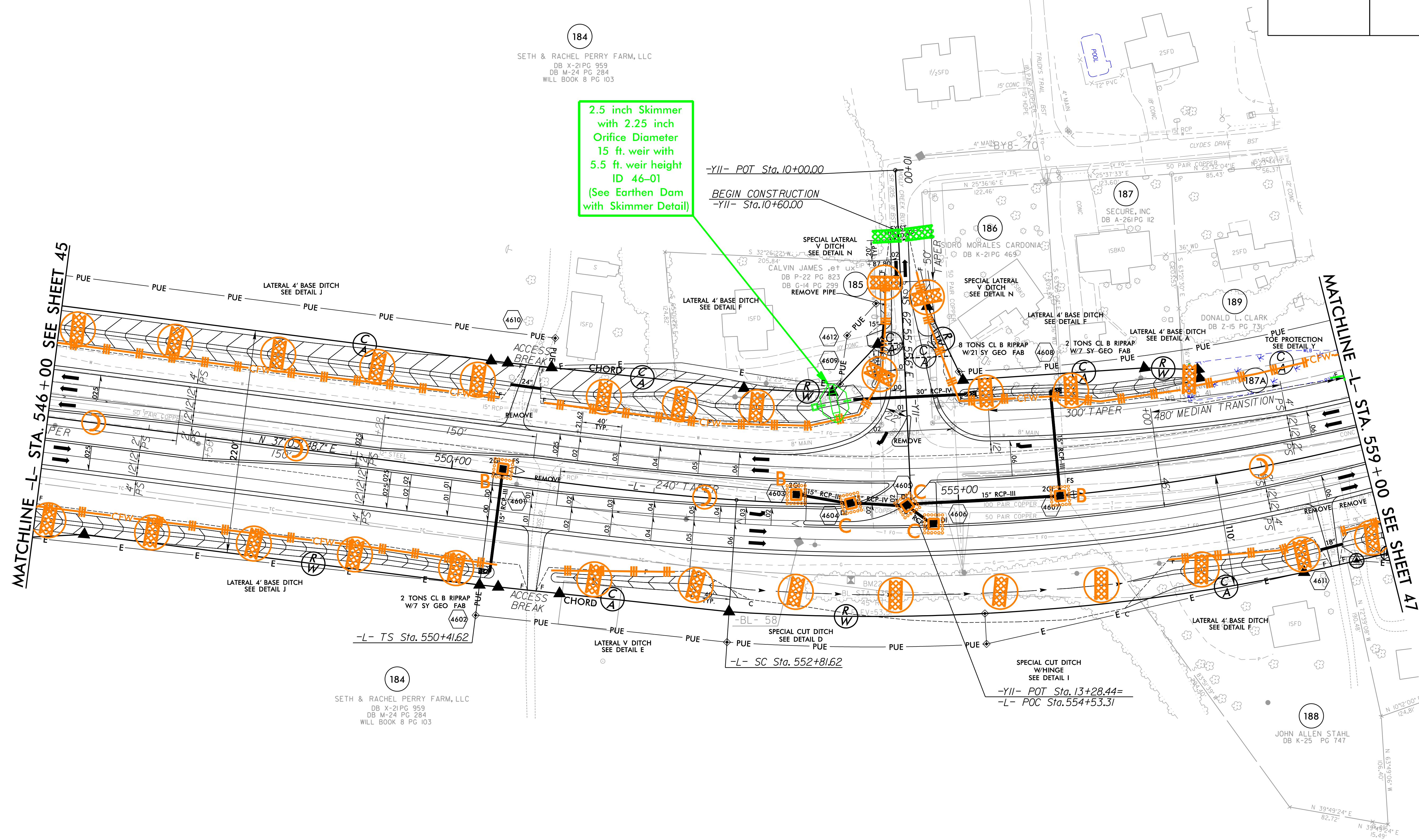
PROJECT REFERENCE NO. R-2511		SHEET NO. EC-90/CONST.46	
RW SHEET NO.		HYDRAULICS ENGINEER	
ROADWAY DESIGN ENGINEER		HYDRAULICS ENGINEER	



184  
 SETH & RACHEL PERRY FARM, LLC  
 DB X-21 PG 959  
 DB M-24 PG 284  
 WILL BOOK 8 PG 103

2.5 inch Skimmer  
 with 2.25 inch  
 Orifice Diameter  
 15 ft. weir with  
 5.5 ft. weir height  
 ID 46-01  
 (See Earthen Dam  
 with Skimmer Detail)

-YII- POT Sta. 10+00.00  
 BEGIN CONSTRUCTION  
 -YII- Sta. 10+60.00



184  
 SETH & RACHEL PERRY FARM, LLC  
 DB X-21 PG 959  
 DB M-24 PG 284  
 WILL BOOK 8 PG 103

188  
 JOHN ALLEN STAHL  
 DB K-25 PG 747

**RK&K**  
 P: (919) 878-8560  
 8601 Six Forks Road, Forum 1, Suite 700  
 Raleigh, North Carolina 27615-3960  
 NC License No. F-0112  
 Engineers | Construction Managers | Planners | Scientists  
 www.rkk.com  
 Responsive People | Creative Solutions

8/17/99

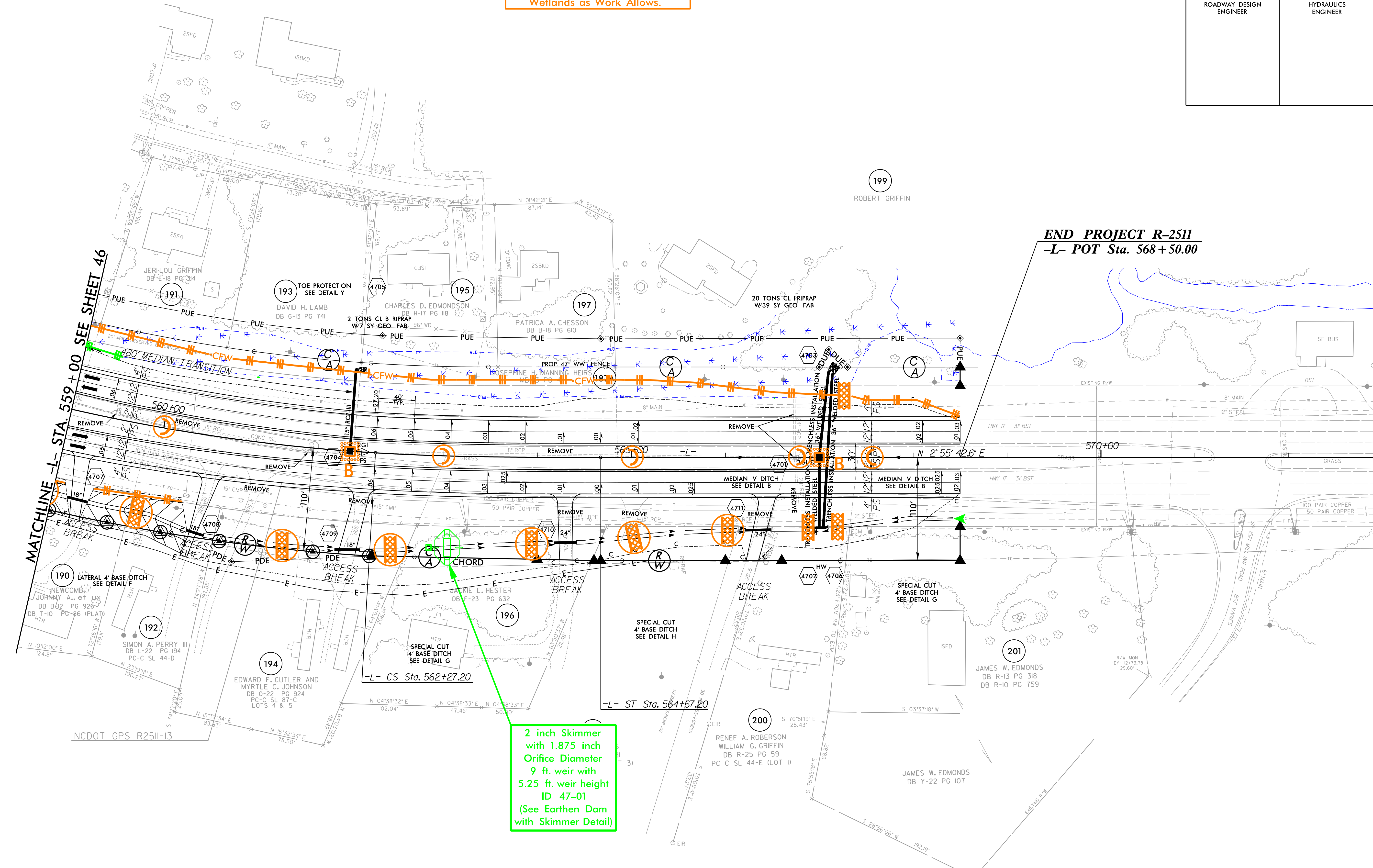
8/19/2021  
 C:\Users\jcs\CADD\PSH\E-roston\_Contr01\2511\_EC\_PSH\_90.dgn



PROJECT REFERENCE NO. R-2511	SHEET NO. EC-91/CONST.47
RW SHEET NO.	HYDRAULICS ENGINEER
ROADWAY DESIGN ENGINEER	

NAD 83/2011

Place Matting for Erosion Control on Slopes Adjacent to Permitted Wetlands as Work Allows.



END PROJECT R-2511  
-L- POT Sta. 568+50.00

2 inch Skimmer with 1.875 inch Orifice Diameter  
9 ft. weir with 5.25 ft. weir height  
ID 47-01  
(See Earthen Dam with Skimmer Detail)

-L-  
 PI Sta 557+63.51    PI Sta 563+07.22  
 $\Delta = 27'13" 29.9" (LT)$      $\Theta s = 3'27" 18.1"$   
 $D = 2'52" 45.1"$      $Ls = 240.00'$   
 $L = 945.58'$      $LT = 160.03'$   
 $T = 481.89'$      $ST = 80.03'$   
 $R = 1,990.00'$   
 $Se = 0.06$

FOR -L- PROFILE SEE SHT. 68  
ALL DRIVEWAYS ARE 16' WITH 10' RADII UNLESS OTHERWISE NOTED

**RK&K**  
 P: (919) 878-8660  
 8601 Six Forks Road, Forum 1, Suite 700  
 Raleigh, North Carolina 27615-3960  
 NC License No. F-0112  
 Engineers | Construction Managers | Planners | Scientists  
 www.rkk.com  
 Responsive People | Creative Solutions

8/17/19 8/17/2021 R:\Projects\2511\EC-91\Const\EC-91.dgn

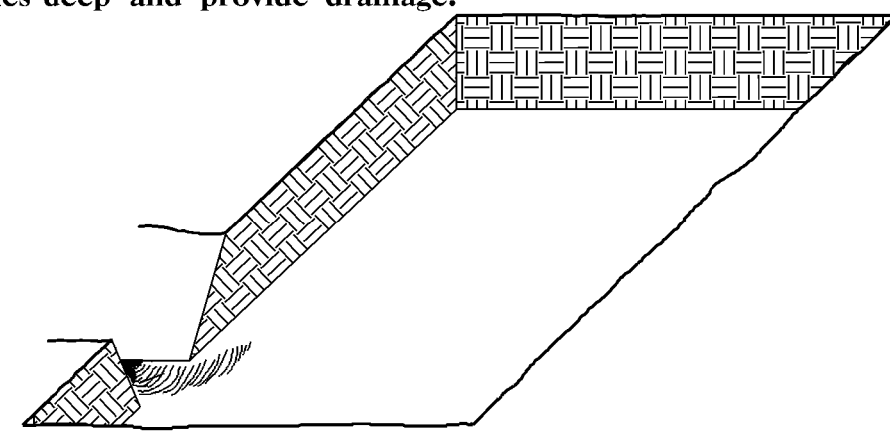
STATE	STATE PROJECT REFERENCE NO.	SHEET NO.	TOTAL SHEETS
N.C.	R-2511	RF-1	
STATE PROJ. NO.	F.A. PROJ. NO.	DESCRIPTION	

## PLANTING DETAILS

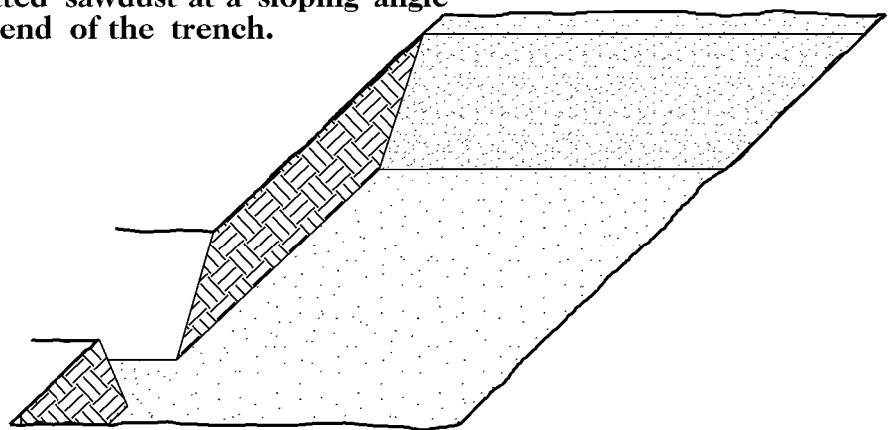
### SEEDLING / LINER BAREROOT PLANTING DETAIL

#### HEALING IN

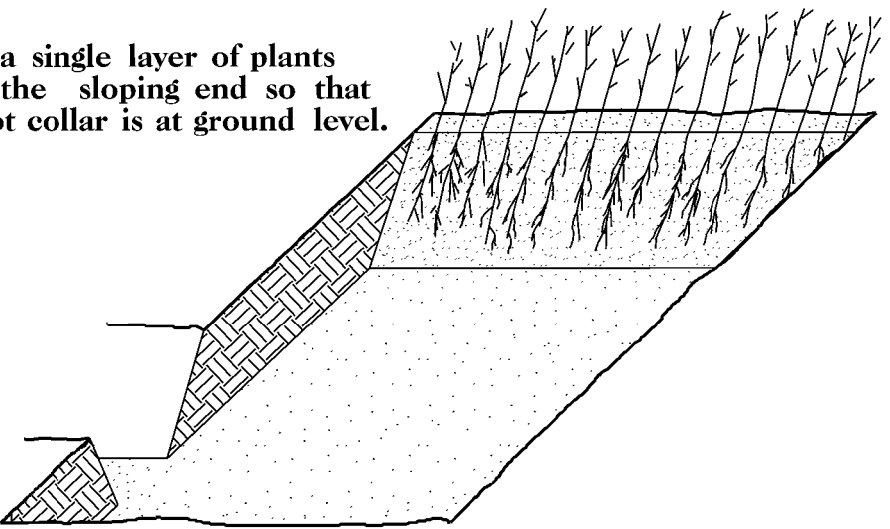
1. Locate a healing-in site in a shady, well protected area.
2. Excavate a flat bottom trench 12 inches deep and provide drainage.



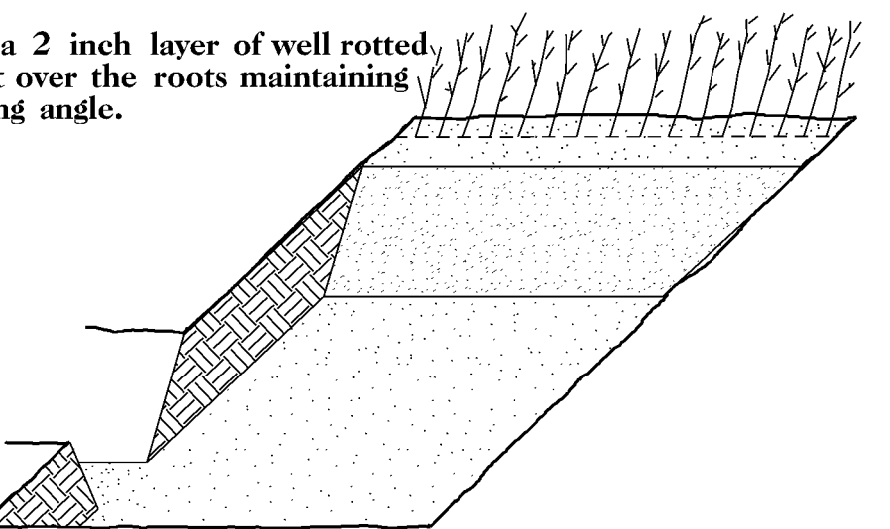
3. Backfill the trench with 2 inches well rotted sawdust. Place a 2 inch layer of well rotted sawdust at a sloping angle at one end of the trench.



4. Place a single layer of plants against the sloping end so that the root collar is at ground level.

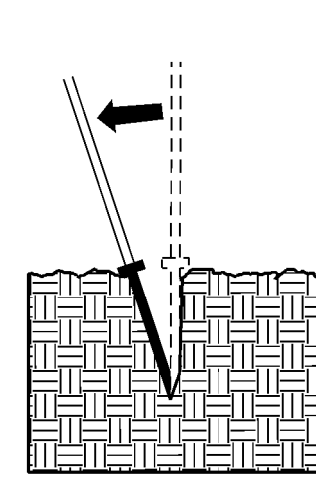


5. Place a 2 inch layer of well rotted sawdust over the roots maintaining a sloping angle.

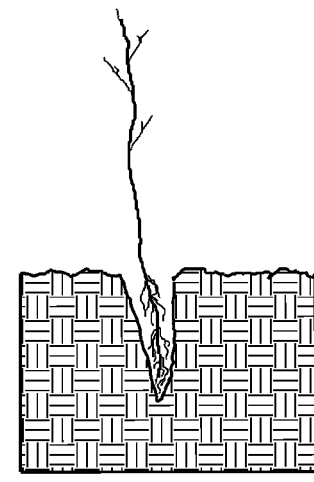


6. Repeat layers of plants and sawdust as necessary and water thoroughly.

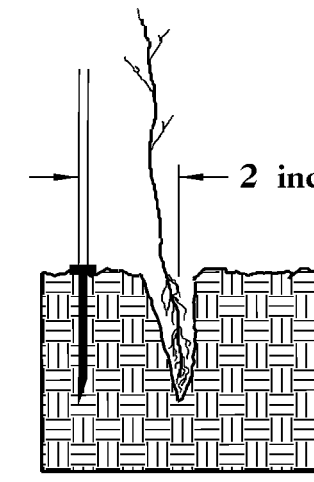
#### DOUBLE PLANTING METHOD USING THE K3C PLANTING BAR



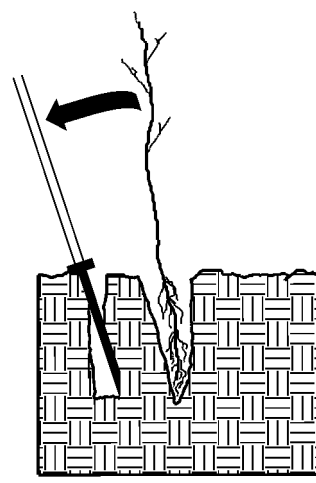
1. Insert planting bar as shown and pull handle toward planter.



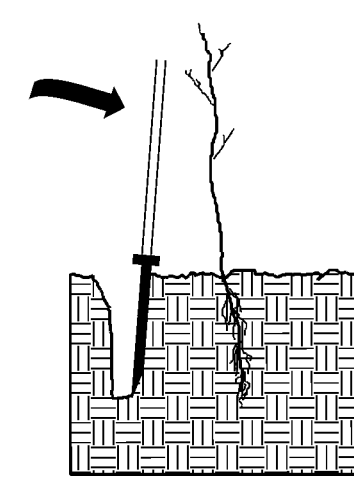
2. Remove planting bar and place seedling at correct depth.



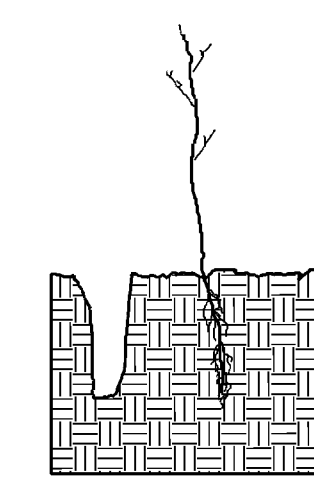
3. Insert planting bar 2 inches toward planter from seedling.



4. Pull handle of bar toward planter, firming soil at bottom.



5. Push handle forward firming soil at top.



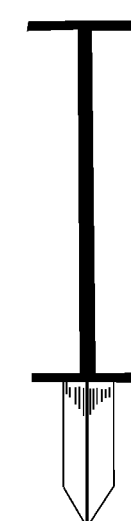
6. Leave compaction hole open. Water thoroughly.

#### PLANTING NOTES:

**PLANTING BAG**  
During planting, seedlings shall be kept in a moist canvas bag or similar container to prevent the root systems from drying.



**K3C PLANTING BAR**  
Planting bar shall have a blade with a triangular cross section, and shall be 12 inches long, 4 inches wide and 1 inch thick at center.



**ROOT PRUNING**  
All seedlings shall be root pruned, if necessary, so that no roots extend more than 10 inches below the root collar.

## REFORESTATION

- TREE REFORESTATION SHALL BE PLANTED 6 FT. TO 10 FT. ON CENTER, RANDOM SPACING, AVERAGING 8 FT. ON CENTER, APPROXIMATELY 680 PLANTS PER ACRE.

#### REFORESTATION

MIXTURE, TYPE, SIZE, AND FURNISH SHALL CONFORM TO THE FOLLOWING:

40% PLATANUS OCCIDENTALIS	AMERICAN SYCAMORE	12 in - 18 in 3R
30% LIRIODENDRON TULIPIFERA	YELLOW POPLAR	12 in - 18 in 3R
30% QUERCUS ALBA	WHITE OAK	12 in - 18 in 3R

## REFORESTATION DETAIL SHEET

N.C.D.O.T. - ROADSIDE ENVIRONMENTAL UNIT