

5/28/99

-L-

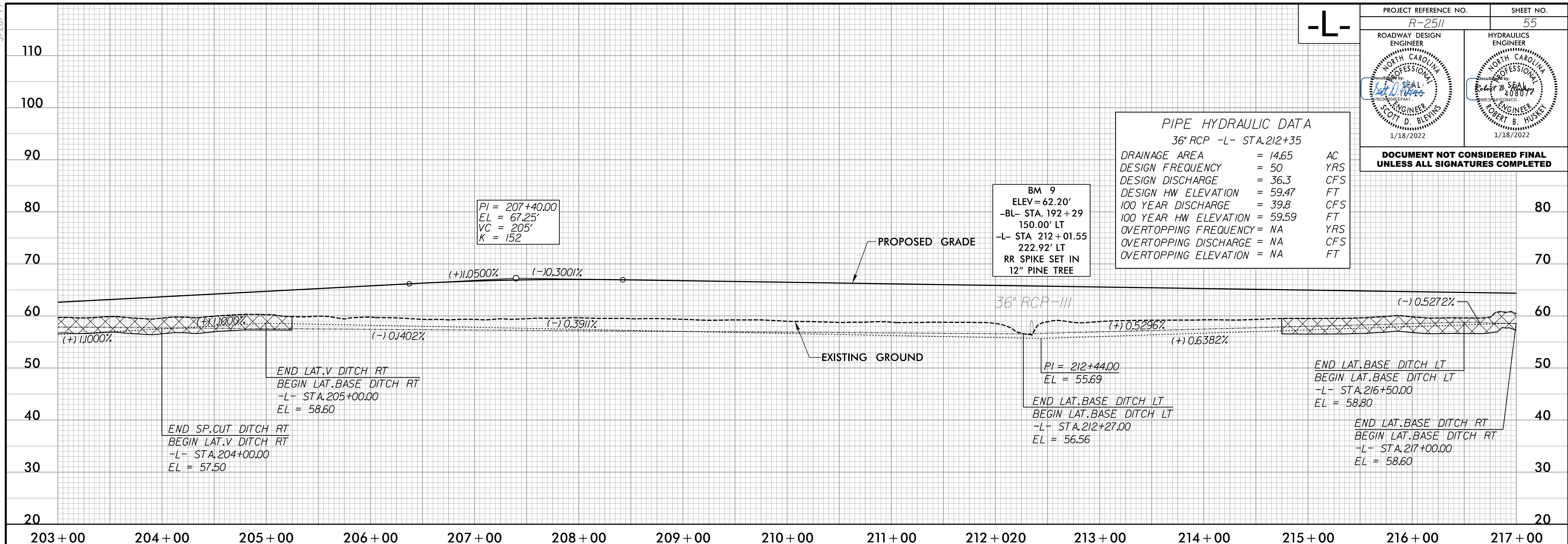
PROJECT REFERENCE NO. R-2511	SHEET NO. 55
ROADWAY DESIGN ENGINEER SCOTT D. BLEVINS 1/18/2022	HYDRAULICS ENGINEER ROBERT B. HUSLEY 1/18/2022

**PIPE HYDRAULIC DATA**  
36" RCP -L- STA.212+35

DRAINAGE AREA	= 14.65	AC
DESIGN FREQUENCY	= 50	YRS
DESIGN DISCHARGE	= 36.3	CFS
DESIGN HW ELEVATION	= 59.47	FT
100 YEAR DISCHARGE	= 39.8	CFS
100 YEAR HW ELEVATION	= 59.59	FT
OVERTOPPING FREQUENCY	= NA	YRS
OVERTOPPING DISCHARGE	= NA	CFS
OVERTOPPING ELEVATION	= NA	FT

BM 9  
ELEV = 62.20'  
-BL- STA. 192+29  
150.00' LT  
-L- STA 212+01.55  
222.92' LT  
RR SPIKE SET IN  
12" PINE TREE

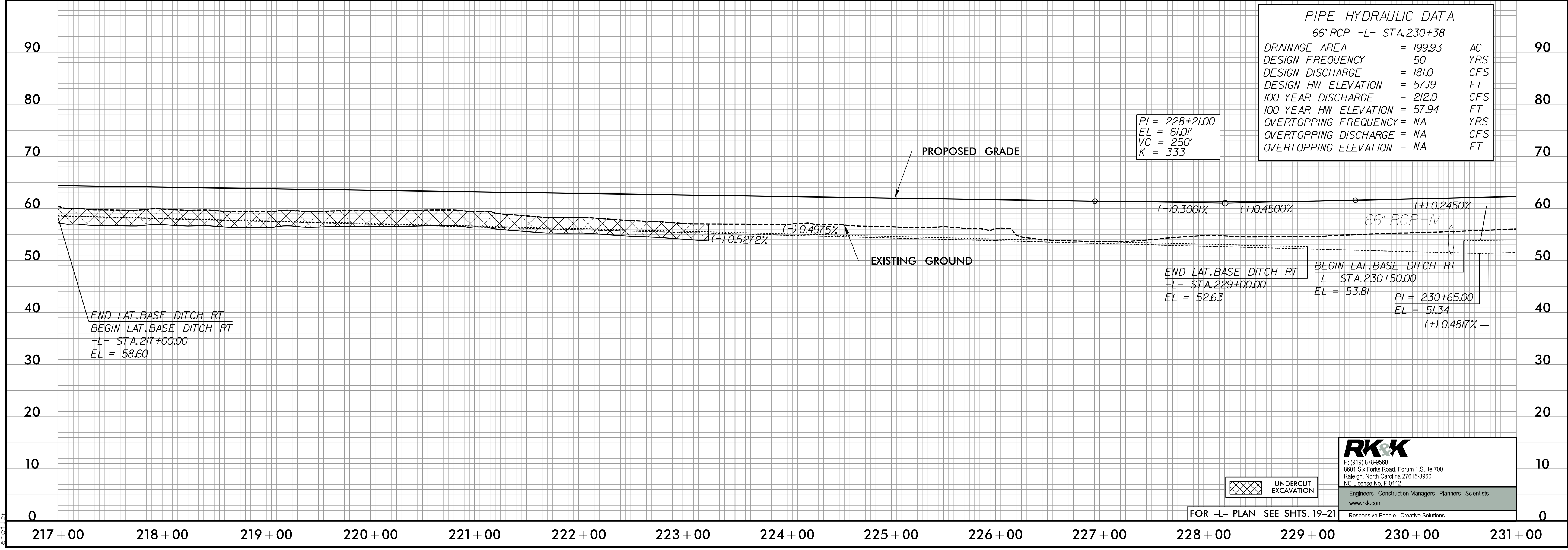
PI = 207+40.00  
EL = 67.25'  
VC = 205'  
K = 152



**PIPE HYDRAULIC DATA**  
66" RCP -L- STA.230+38

DRAINAGE AREA	= 199.93	AC
DESIGN FREQUENCY	= 50	YRS
DESIGN DISCHARGE	= 181.0	CFS
DESIGN HW ELEVATION	= 57.19	FT
100 YEAR DISCHARGE	= 212.0	CFS
100 YEAR HW ELEVATION	= 57.94	FT
OVERTOPPING FREQUENCY	= NA	YRS
OVERTOPPING DISCHARGE	= NA	CFS
OVERTOPPING ELEVATION	= NA	FT

PI = 228+21.00  
EL = 61.0'  
VC = 250'  
K = 333



**RK&K**  
P: (919) 878-9560  
8601 Six Forks Road, Forum 1, Suite 700  
Raleigh, North Carolina 27615-3960  
NC License No. F-0112  
Engineers | Construction Managers | Planners | Scientists  
www.rkk.com

UNDERCUT EXCAVATION

FOR -L- PLAN SEE SHTS. 19-21

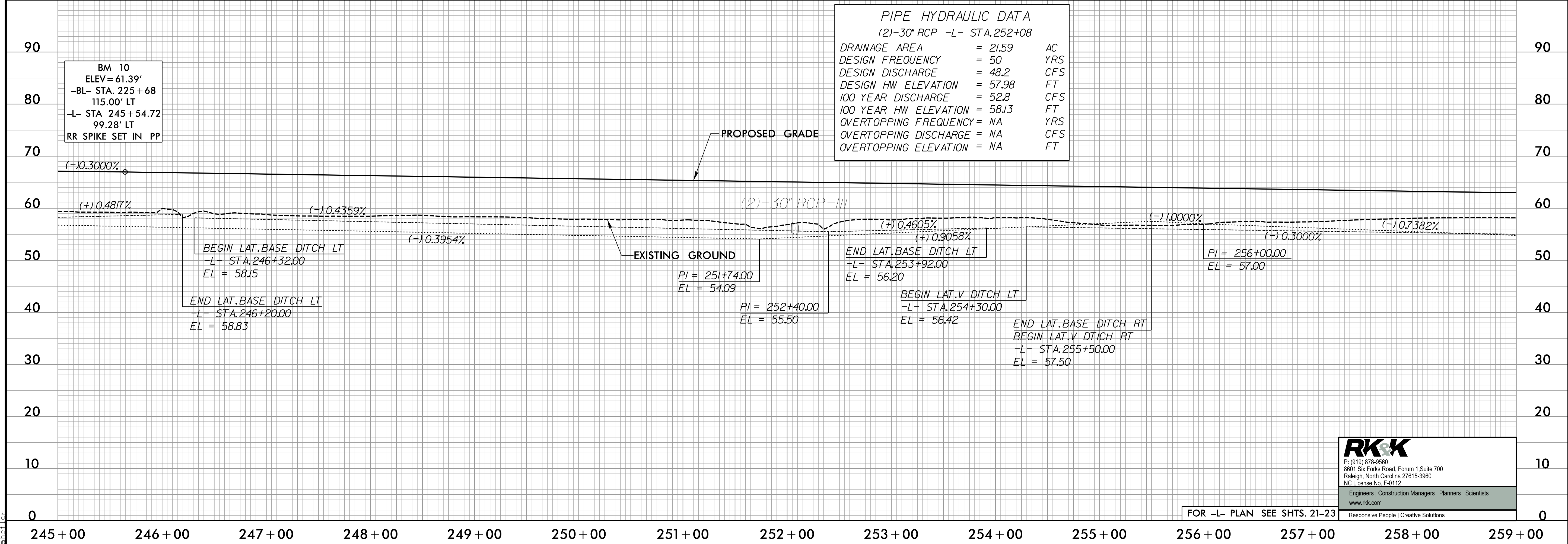
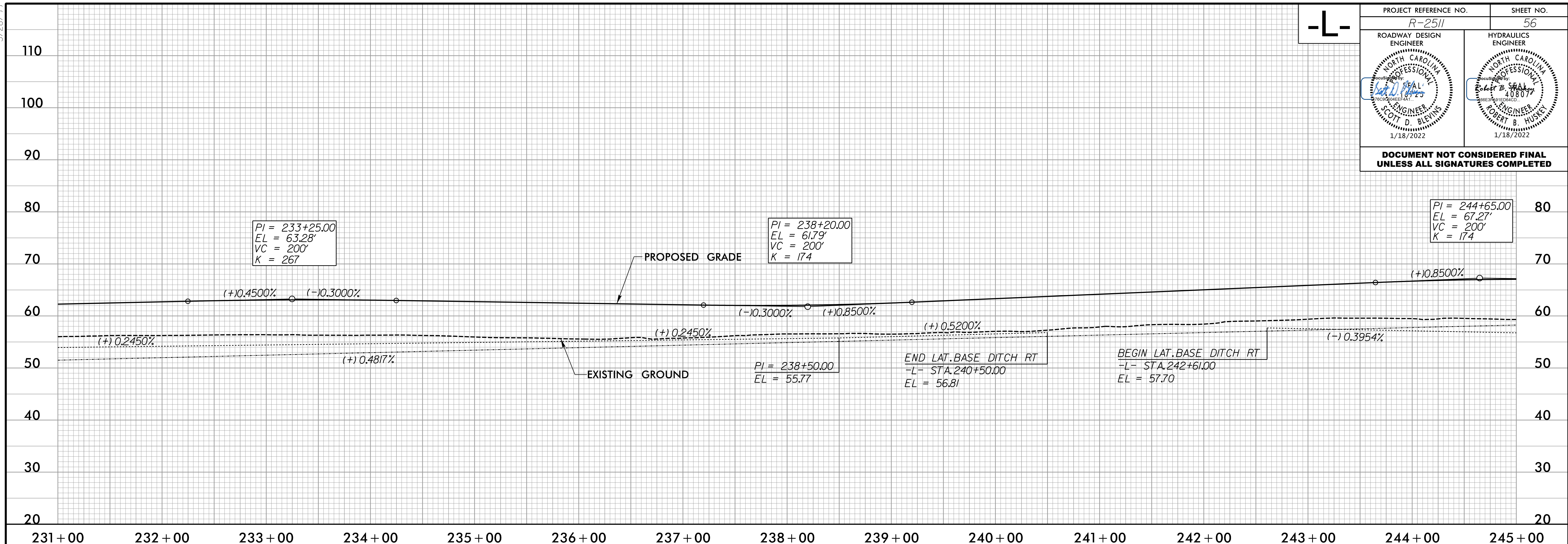
1/17/2022  
R:\Projects\2025\2511\_Rdy\p1155.dgn

5/28/22

-L-

PROJECT REFERENCE NO. R-2511	SHEET NO. 56
ROADWAY DESIGN ENGINEER JOTT D. BLEVINS 1/18/2022	HYDRAULICS ENGINEER ROBERT B. HUSKEY 1/18/2022

DOCUMENT NOT CONSIDERED FINAL UNLESS ALL SIGNATURES COMPLETED



BM 10  
ELEV = 61.39'  
-BL- STA. 225 + 68  
115.00' LT  
-L- STA 245 + 54.72  
99.28' LT  
RR SPIKE SET IN PP

**RK&K**  
P: (919) 978-9560  
8601 Six Forks Road, Forum 1, Suite 700  
Raleigh, North Carolina 27615-3960  
NC License No. F-0112  
Engineers | Construction Managers | Planners | Scientists  
www.rkk.com  
Responsive People | Creative Solutions

FOR -L- PLAN SEE SHTS. 21-23

R:\2022\Projects\2511\2511\_Rdy.plt156.dgn







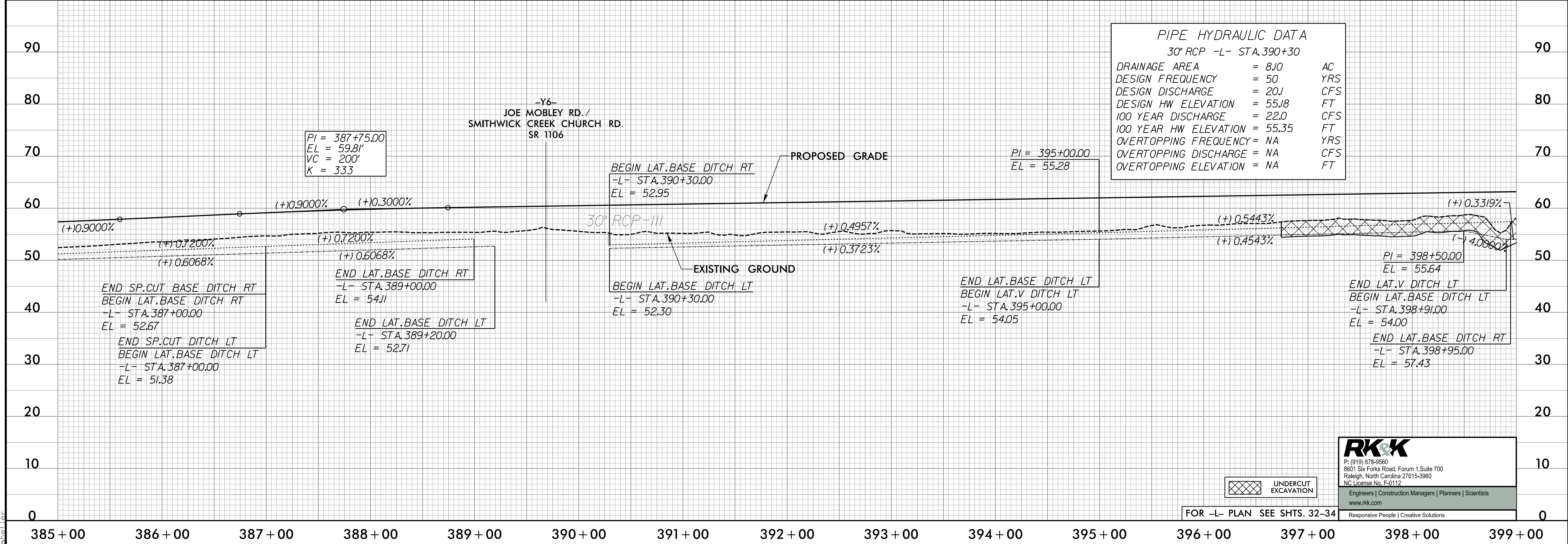
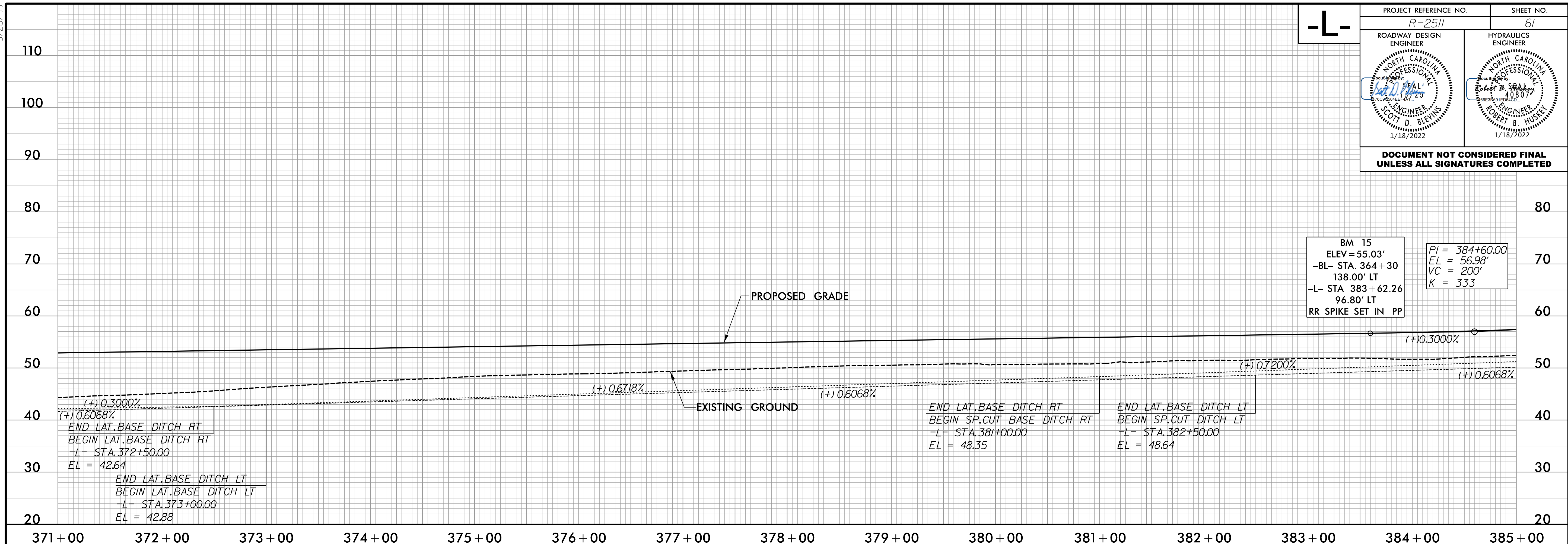


5/28/99

-L-

PROJECT REFERENCE NO. R-2511	SHEET NO. 61
ROADWAY DESIGN ENGINEER JOTT D. BLEVINS 1/18/2022	HYDRAULICS ENGINEER ROBERT B. HUSKEY 1/18/2022

DOCUMENT NOT CONSIDERED FINAL UNLESS ALL SIGNATURES COMPLETED



**RK&K**  
 P: (919) 878-9560  
 8601 Six Forks Road, Forum 1, Suite 700  
 Raleigh, North Carolina 27615-3960  
 NC License No. F-0112  
 Engineers | Construction Managers | Planners | Scientists  
 www.rkk.com  
 Responsive People | Creative Solutions

FOR -L- PLAN SEE SHTS. 32-34

1/17/2022 R:\Projects\2511\Proj\2511\_Rdy.plt.dgn

5/28/22

-L-

PROJECT REFERENCE NO. R-2511	SHEET NO. 62
ROADWAY DESIGN ENGINEER SCOTT D. BLEVINS 1/18/2022	HYDRAULICS ENGINEER ROBERT B. HUSLEY 1/18/2022

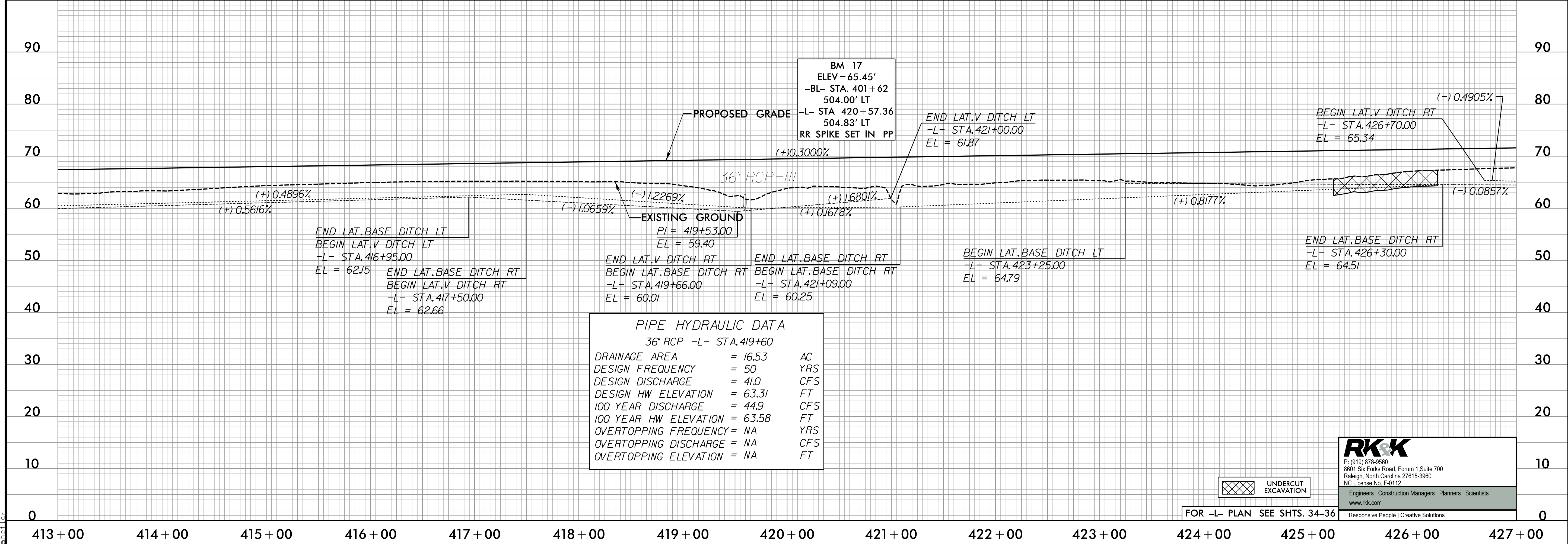
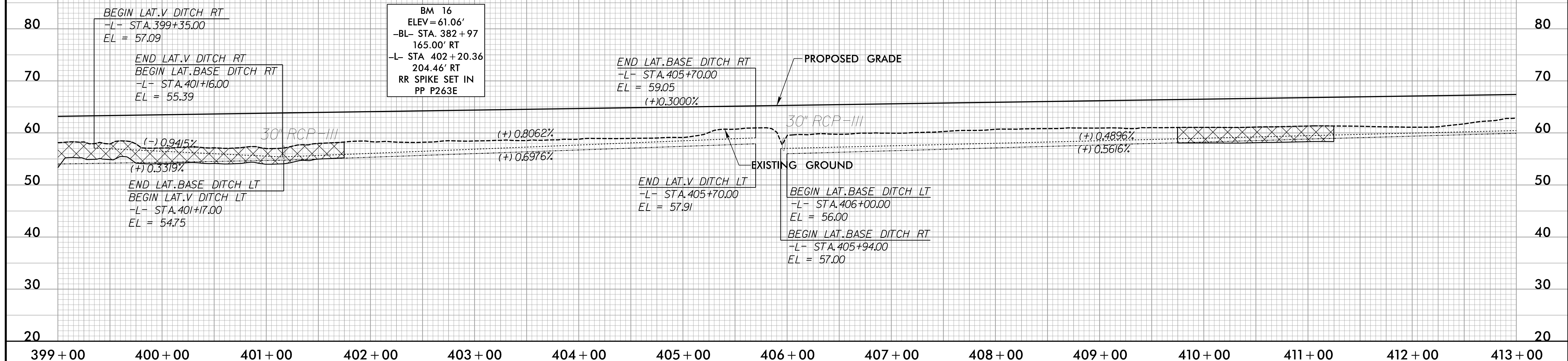
DOCUMENT NOT CONSIDERED FINAL UNLESS ALL SIGNATURES COMPLETED

PIPE HYDRAULIC DATA  
30" RCP -L- STA.401+17

DRAINAGE AREA	= 9.00	AC
DESIGN FREQUENCY	= 50	YRS
DESIGN DISCHARGE	= 22.3	CFS
DESIGN HW ELEVATION	= 57.77	FT
100 YEAR DISCHARGE	= 24.4	CFS
100 YEAR HW ELEVATION	= 57.92	FT
OVERTOPPING FREQUENCY	= NA	YRS
OVERTOPPING DISCHARGE	= NA	CFS
OVERTOPPING ELEVATION	= NA	FT

PIPE HYDRAULIC DATA  
30" RCP -L- STA.405+97

DRAINAGE AREA	= 7.42	AC
DESIGN FREQUENCY	= 50	YRS
DESIGN DISCHARGE	= 18.4	CFS
DESIGN HW ELEVATION	= 59.10	FT
100 YEAR DISCHARGE	= 20.1	CFS
100 YEAR HW ELEVATION	= 59.24	FT
OVERTOPPING FREQUENCY	= NA	YRS
OVERTOPPING DISCHARGE	= NA	CFS
OVERTOPPING ELEVATION	= NA	FT



PIPE HYDRAULIC DATA  
36" RCP -L- STA.419+60

DRAINAGE AREA	= 16.53	AC
DESIGN FREQUENCY	= 50	YRS
DESIGN DISCHARGE	= 41.0	CFS
DESIGN HW ELEVATION	= 63.31	FT
100 YEAR DISCHARGE	= 44.9	CFS
100 YEAR HW ELEVATION	= 63.58	FT
OVERTOPPING FREQUENCY	= NA	YRS
OVERTOPPING DISCHARGE	= NA	CFS
OVERTOPPING ELEVATION	= NA	FT



FOR -L- PLAN SEE SHTS. 34-36

**RK&K**  
P: (919) 878-9560  
8601 Six Forks Road, Forum 1, Suite 700  
Raleigh, North Carolina 27615-3960  
NC License No. F-0112  
Engineers | Construction Managers | Planners | Scientists  
www.rkk.com  
Responsive People | Creative Solutions

R:\2022\Projects\2511\Drawings\Profile\162.dgn



5/28/22

-L-

PROJECT REFERENCE NO. R-2511	SHEET NO. 63
ROADWAY DESIGN ENGINEER <i>[Signature]</i> 1/18/2022	HYDRAULICS ENGINEER <i>[Signature]</i> 1/18/2022

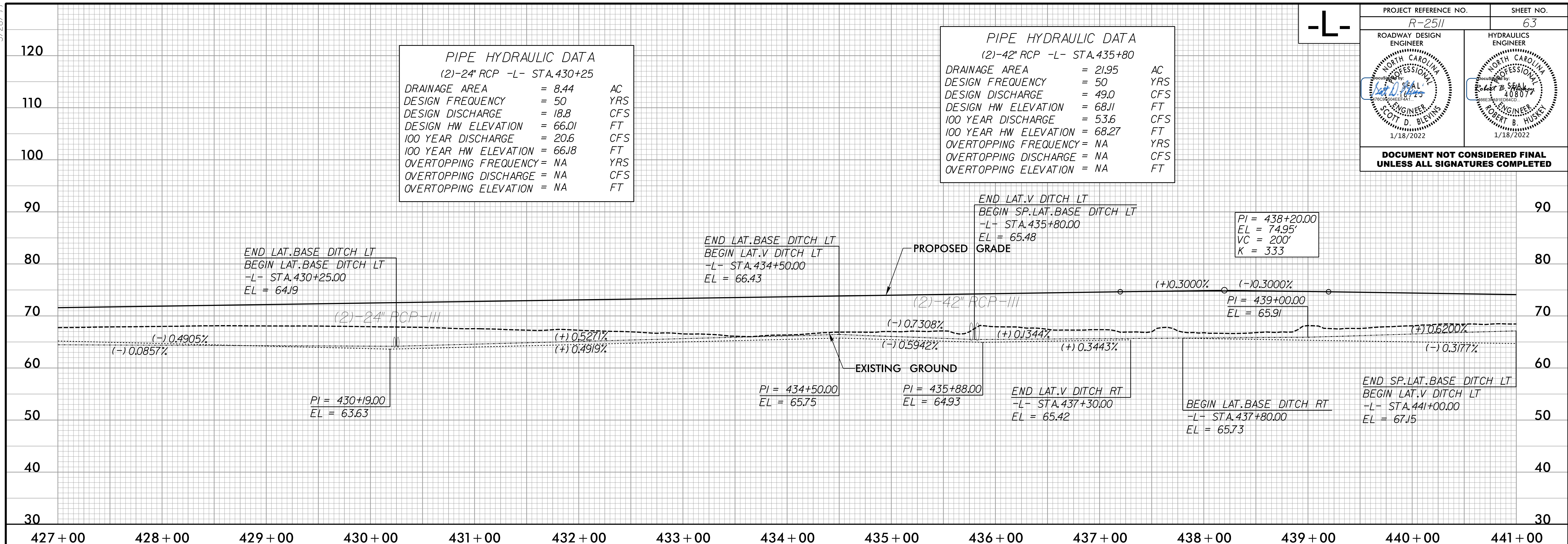
DOCUMENT NOT CONSIDERED FINAL UNLESS ALL SIGNATURES COMPLETED

**PIPE HYDRAULIC DATA**  
(2)-24" RCP -L- STA.430+25

DRAINAGE AREA	= 8.44	AC
DESIGN FREQUENCY	= 50	YRS
DESIGN DISCHARGE	= 18.8	CFS
DESIGN HW ELEVATION	= 66.01	FT
100 YEAR DISCHARGE	= 20.6	CFS
100 YEAR HW ELEVATION	= 66.18	FT
OVERTOPPING FREQUENCY	= NA	YRS
OVERTOPPING DISCHARGE	= NA	CFS
OVERTOPPING ELEVATION	= NA	FT

**PIPE HYDRAULIC DATA**  
(2)-42" RCP -L- STA.435+80

DRAINAGE AREA	= 21.95	AC
DESIGN FREQUENCY	= 50	YRS
DESIGN DISCHARGE	= 49.0	CFS
DESIGN HW ELEVATION	= 68.11	FT
100 YEAR DISCHARGE	= 53.6	CFS
100 YEAR HW ELEVATION	= 68.27	FT
OVERTOPPING FREQUENCY	= NA	YRS
OVERTOPPING DISCHARGE	= NA	CFS
OVERTOPPING ELEVATION	= NA	FT

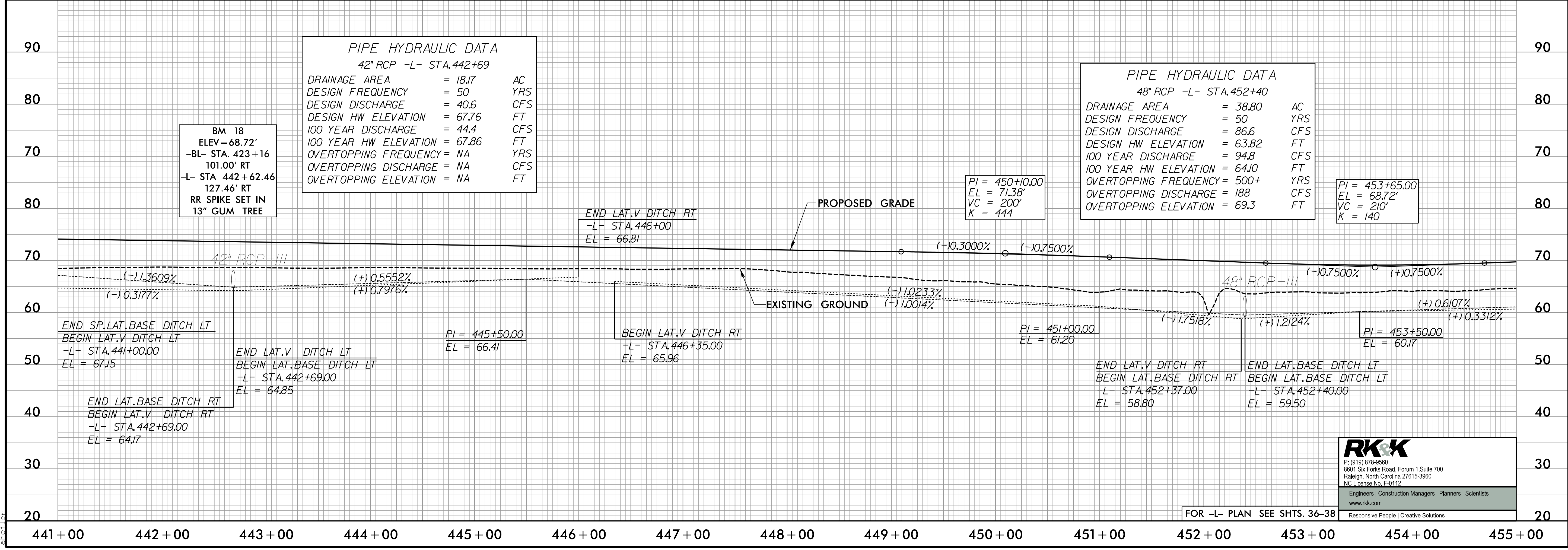


**PIPE HYDRAULIC DATA**  
42" RCP -L- STA.442+69

DRAINAGE AREA	= 18.17	AC
DESIGN FREQUENCY	= 50	YRS
DESIGN DISCHARGE	= 40.6	CFS
DESIGN HW ELEVATION	= 67.76	FT
100 YEAR DISCHARGE	= 44.4	CFS
100 YEAR HW ELEVATION	= 67.86	FT
OVERTOPPING FREQUENCY	= NA	YRS
OVERTOPPING DISCHARGE	= NA	CFS
OVERTOPPING ELEVATION	= NA	FT

**PIPE HYDRAULIC DATA**  
48" RCP -L- STA.452+40

DRAINAGE AREA	= 38.80	AC
DESIGN FREQUENCY	= 50	YRS
DESIGN DISCHARGE	= 86.6	CFS
DESIGN HW ELEVATION	= 63.82	FT
100 YEAR DISCHARGE	= 94.8	CFS
100 YEAR HW ELEVATION	= 64.10	FT
OVERTOPPING FREQUENCY	= 500+	YRS
OVERTOPPING DISCHARGE	= 188	CFS
OVERTOPPING ELEVATION	= 69.3	FT



**RK&K**  
P: (919) 978-9560  
8601 Six Forks Road, Forum 1, Suite 700  
Raleigh, North Carolina 27615-3960  
NC License No. F-0112  
Engineers | Construction Managers | Planners | Scientists  
www.rkk.com  
Responsive People | Creative Solutions

FOR -L- PLAN SEE SHTS. 36-38

I:\72022\Projects\2511\RDY\p163.dgn

5/28/99

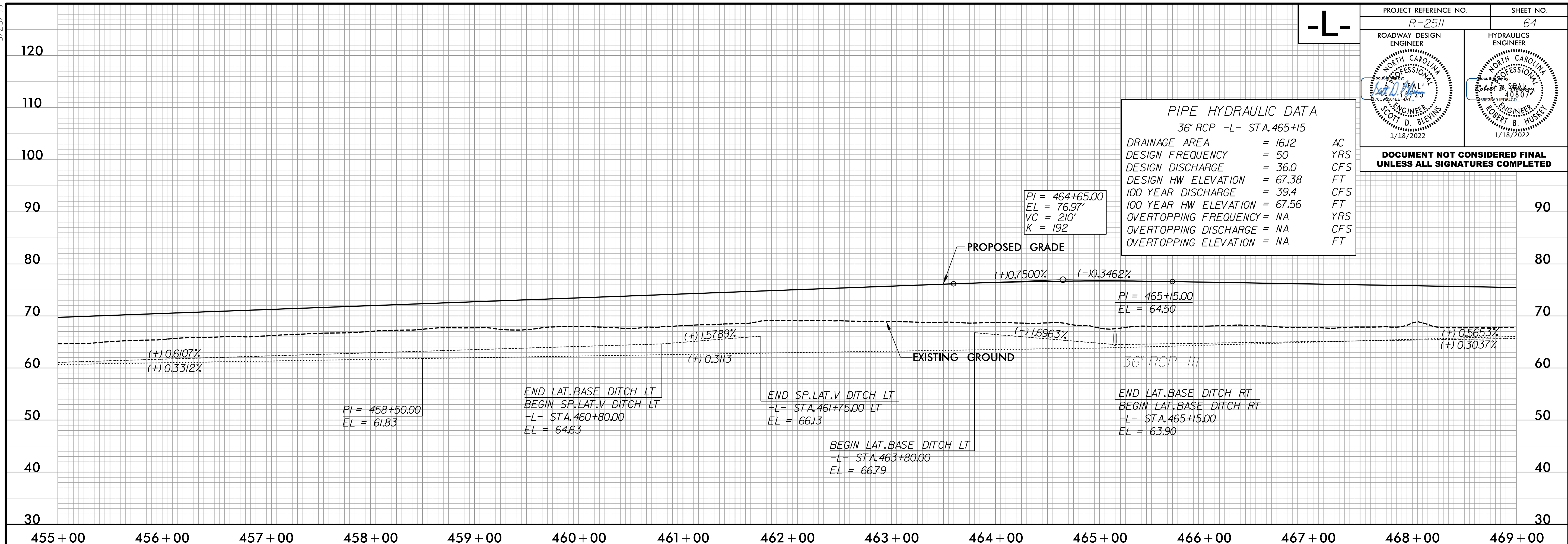
-L-

PROJECT REFERENCE NO. R-2511	SHEET NO. 64
ROADWAY DESIGN ENGINEER 	HYDRAULICS ENGINEER 

**PIPE HYDRAULIC DATA**  
36" RCP -L- STA. 465+15

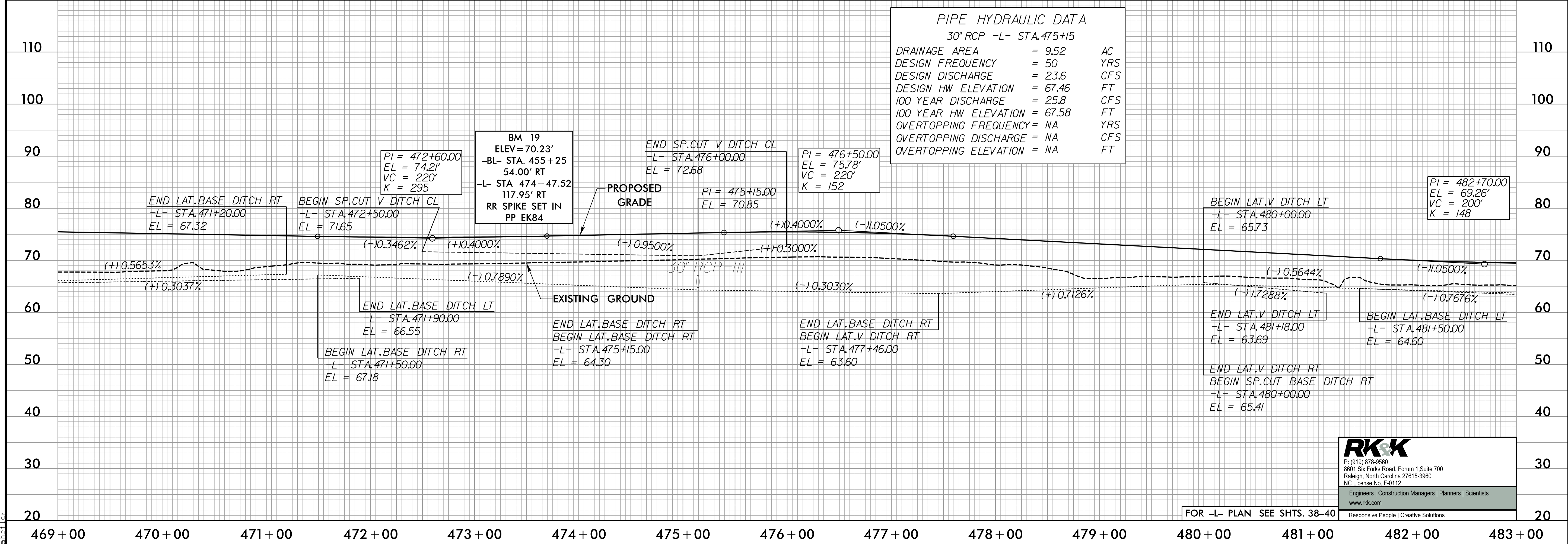
DRAINAGE AREA	= 16.12	AC
DESIGN FREQUENCY	= 50	YRS
DESIGN DISCHARGE	= 36.0	CFS
DESIGN HW ELEVATION	= 67.38	FT
100 YEAR DISCHARGE	= 39.4	CFS
100 YEAR HW ELEVATION	= 67.56	FT
OVERTOPPING FREQUENCY	= NA	YRS
OVERTOPPING DISCHARGE	= NA	CFS
OVERTOPPING ELEVATION	= NA	FT

DOCUMENT NOT CONSIDERED FINAL UNLESS ALL SIGNATURES COMPLETED



**PIPE HYDRAULIC DATA**  
30" RCP -L- STA. 475+15

DRAINAGE AREA	= 9.52	AC
DESIGN FREQUENCY	= 50	YRS
DESIGN DISCHARGE	= 23.6	CFS
DESIGN HW ELEVATION	= 67.46	FT
100 YEAR DISCHARGE	= 25.8	CFS
100 YEAR HW ELEVATION	= 67.58	FT
OVERTOPPING FREQUENCY	= NA	YRS
OVERTOPPING DISCHARGE	= NA	CFS
OVERTOPPING ELEVATION	= NA	FT



**RK&K**  
P: (919) 978-9560  
8601 Six Forks Road, Forum 1, Suite 700  
Raleigh, North Carolina 27615-3960  
NC License No. F-0112  
Engineers | Construction Managers | Planners | Scientists  
www.rkk.com  
Responsive People | Creative Solutions

FOR -L- PLAN SEE SHTS. 38-40

1/17/2022 R:\Projects\2511\Proj\2511\_Rdy.pl164.dgn

5/28/22

-L-

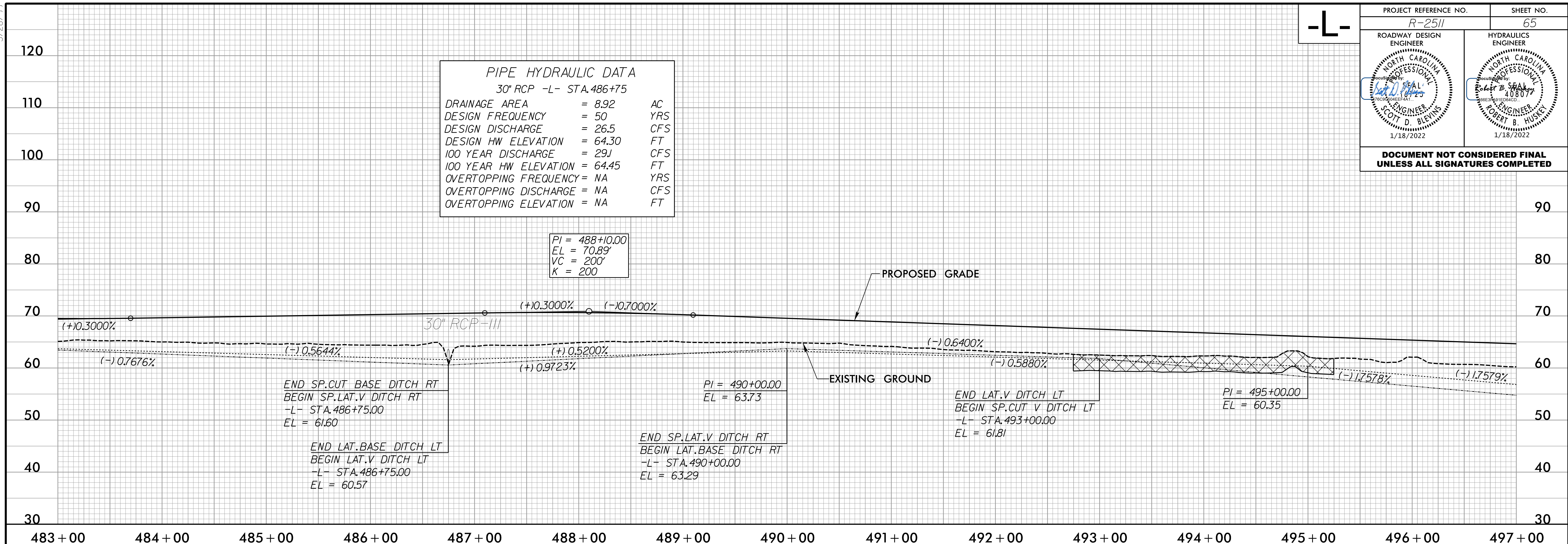
PROJECT REFERENCE NO. R-2511	SHEET NO. 65
ROADWAY DESIGN ENGINEER NORTH CAROLINA PROFESSIONAL ENGINEER JOTT D. BLEVINS 1/18/2022	HYDRAULICS ENGINEER NORTH CAROLINA PROFESSIONAL ENGINEER ROBERT B. HUSKEY 1/18/2022

DOCUMENT NOT CONSIDERED FINAL UNLESS ALL SIGNATURES COMPLETED

**PIPE HYDRAULIC DATA**  
30" RCP -L- STA. 486+75

DRAINAGE AREA	= 8.92	AC
DESIGN FREQUENCY	= 50	YRS
DESIGN DISCHARGE	= 26.5	CFS
DESIGN HW ELEVATION	= 64.30	FT
100 YEAR DISCHARGE	= 29J	CFS
100 YEAR HW ELEVATION	= 64.45	FT
OVERTOPPING FREQUENCY	= NA	YRS
OVERTOPPING DISCHARGE	= NA	CFS
OVERTOPPING ELEVATION	= NA	FT

PI = 488+10.00  
EL = 70.89  
VC = 200'  
K = 200



**PIPE HYDRAULIC DATA**  
60" RCP -L- STA. 497+46

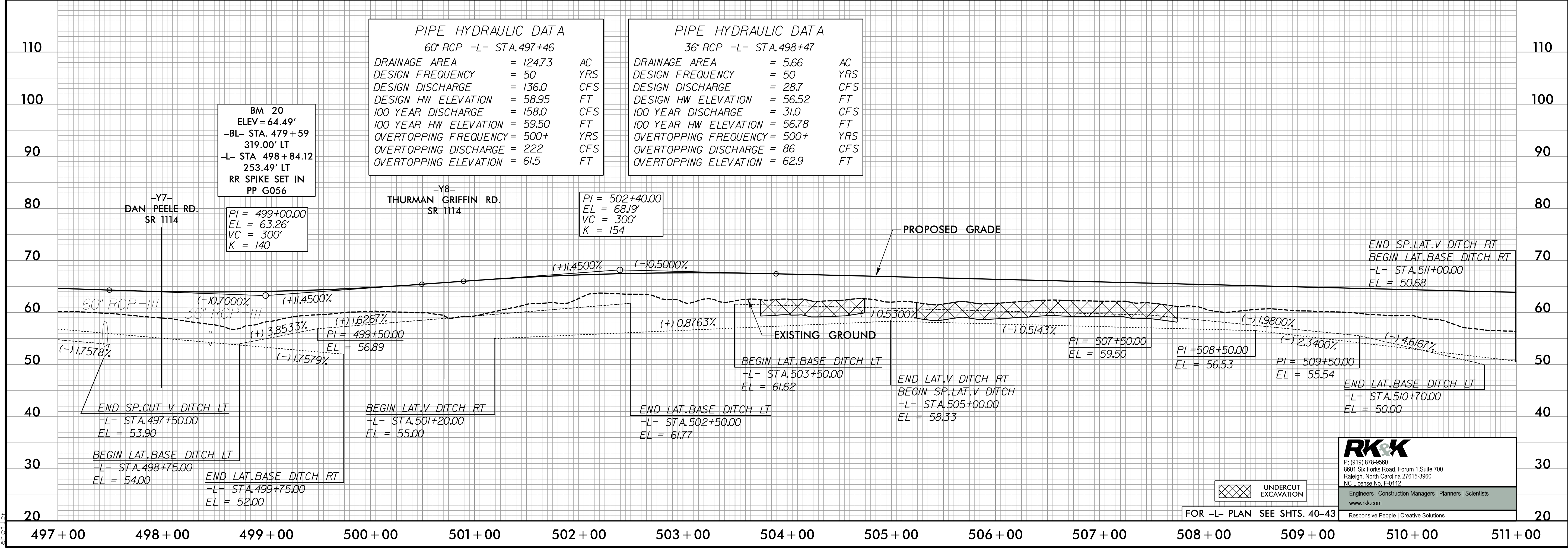
DRAINAGE AREA	= 124.73	AC
DESIGN FREQUENCY	= 50	YRS
DESIGN DISCHARGE	= 136.0	CFS
DESIGN HW ELEVATION	= 58.95	FT
100 YEAR DISCHARGE	= 158.0	CFS
100 YEAR HW ELEVATION	= 59.50	FT
OVERTOPPING FREQUENCY	= 500+	YRS
OVERTOPPING DISCHARGE	= 222	CFS
OVERTOPPING ELEVATION	= 61.5	FT

**PIPE HYDRAULIC DATA**  
36" RCP -L- STA. 498+47

DRAINAGE AREA	= 5.66	AC
DESIGN FREQUENCY	= 50	YRS
DESIGN DISCHARGE	= 28.7	CFS
DESIGN HW ELEVATION	= 56.52	FT
100 YEAR DISCHARGE	= 31.0	CFS
100 YEAR HW ELEVATION	= 56.78	FT
OVERTOPPING FREQUENCY	= 500+	YRS
OVERTOPPING DISCHARGE	= 86	CFS
OVERTOPPING ELEVATION	= 62.9	FT

BM 20  
ELEV = 64.49'  
-BL- STA. 479+59  
319.00' LT  
-L- STA. 498+84.12  
253.49' LT  
RR SPIKE SET IN  
PP G056

PI = 502+40.00  
EL = 68.19'  
VC = 300'  
K = 154



**RK&K**  
P: (919) 978-9560  
8601 Six Forks Road, Forum 1, Suite 700  
Raleigh, North Carolina 27615-3960  
NC License No. F-0112  
Engineers | Construction Managers | Planners | Scientists  
www.rkk.com  
Responsive People | Creative Solutions

FOR -L- PLAN SEE SHTS. 40-43

1/17/2022  
R:\Projects\2022\05\N-Proj\2511\_Rdy\_p165.dgn  
sheaf

5/28/24

PROJECT REFERENCE NO. R-2511	SHEET NO. 66
ROADWAY DESIGN ENGINEER SCOTT D. BLEWIS 1/18/2022	HYDRAULICS ENGINEER ROBERT B. HUSTEY 1/18/2022

**PIPE HYDRAULIC DATA**  
60" RCP -L- STA.511+64

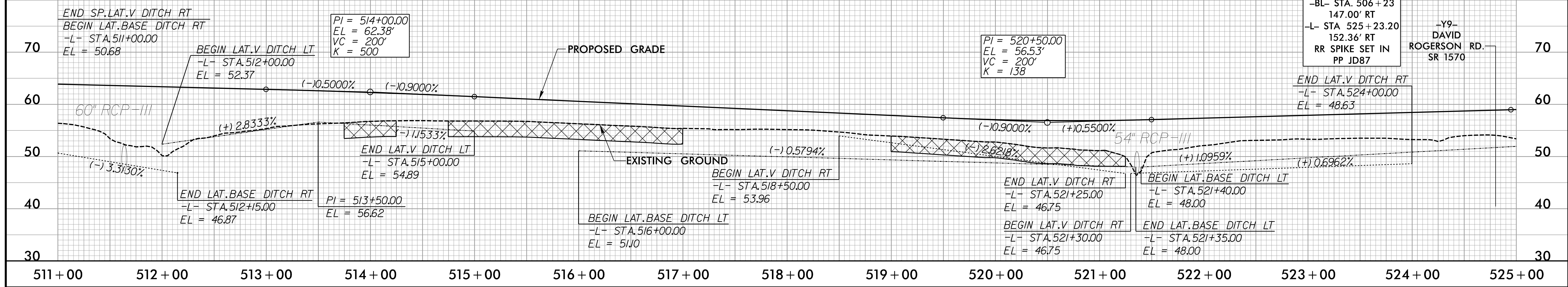
DRAINAGE AREA	= 115.47	AC
DESIGN FREQUENCY	= 50	YRS
DESIGN DISCHARGE	= 129.0	CFS
DESIGN HW ELEVATION	= 52.80	FT
100 YEAR DISCHARGE	= 151.0	CFS
100 YEAR HW ELEVATION	= 53.45	FT
OVERTOPPING FREQUENCY	= NA	YRS
OVERTOPPING DISCHARGE	= NA	CFS
OVERTOPPING ELEVATION	= NA	FT

**PIPE HYDRAULIC DATA**  
54" RCP -L- STA.521+36

DRAINAGE AREA	= 43.44	AC
DESIGN FREQUENCY	= 50	YRS
DESIGN DISCHARGE	= 97.0	CFS
DESIGN HW ELEVATION	= 52.60	FT
100 YEAR DISCHARGE	= 106.1	CFS
100 YEAR HW ELEVATION	= 53.03	FT
OVERTOPPING FREQUENCY	= NA	YRS
OVERTOPPING DISCHARGE	= NA	CFS
OVERTOPPING ELEVATION	= NA	FT

BM 21  
ELEV = 54.01'  
-BL- STA. 506+23  
147.00' RT  
-L- STA 525+23.20  
152.36' RT  
RR SPIKE SET IN  
PP JD87

-Y9-  
DAVID  
ROGERSON RD.  
SR 1570



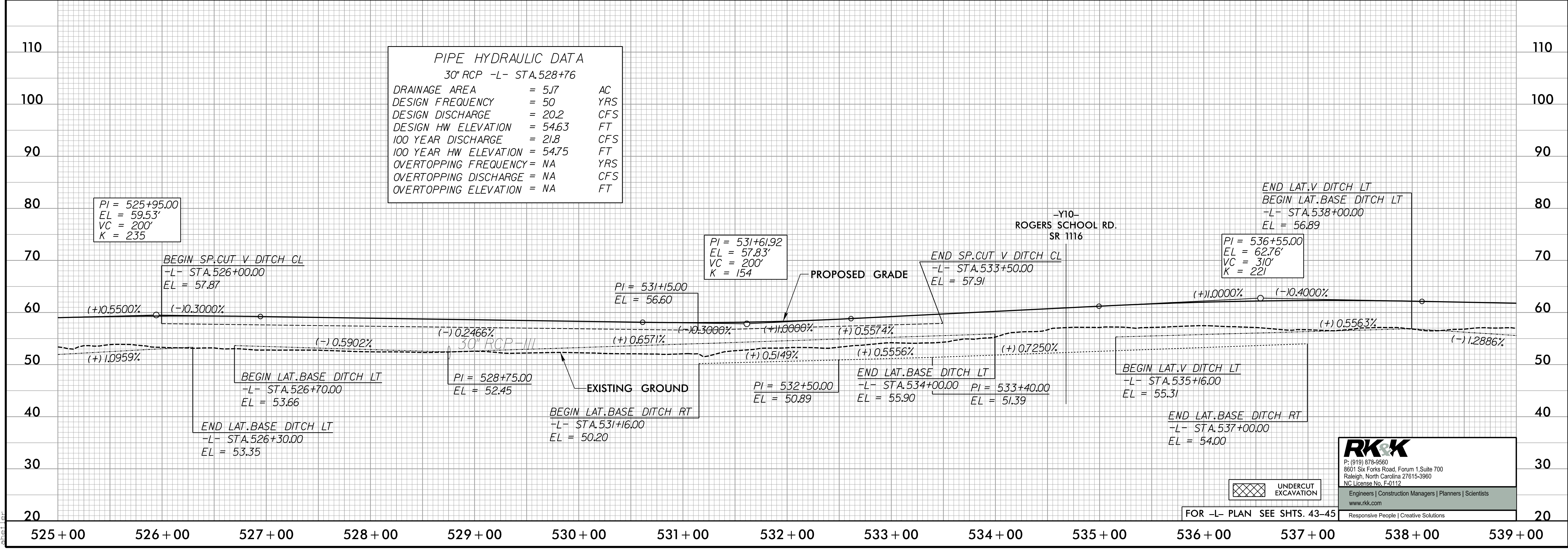
**PIPE HYDRAULIC DATA**  
30" RCP -L- STA.528+76

DRAINAGE AREA	= 5.17	AC
DESIGN FREQUENCY	= 50	YRS
DESIGN DISCHARGE	= 20.2	CFS
DESIGN HW ELEVATION	= 54.63	FT
100 YEAR DISCHARGE	= 21.8	CFS
100 YEAR HW ELEVATION	= 54.75	FT
OVERTOPPING FREQUENCY	= NA	YRS
OVERTOPPING DISCHARGE	= NA	CFS
OVERTOPPING ELEVATION	= NA	FT

PI = 525+95.00  
EL = 59.53'  
VC = 200'  
K = 235

PI = 531+61.92  
EL = 57.83'  
VC = 200'  
K = 154

PI = 536+55.00  
EL = 62.76'  
VC = 310'  
K = 221



**RK&K**  
P: (919) 978-9560  
8601 Six Forks Road, Forum 1, Suite 700  
Raleigh, North Carolina 27615-3960  
NC License No. F-0112  
Engineers | Construction Managers | Planners | Scientists  
www.rkk.com  
Responsive People | Creative Solutions

FOR -L- PLAN SEE SHTS. 43-45

R:\72022\02\05\N-Proj\2511\_Rdy\_p166.dgn

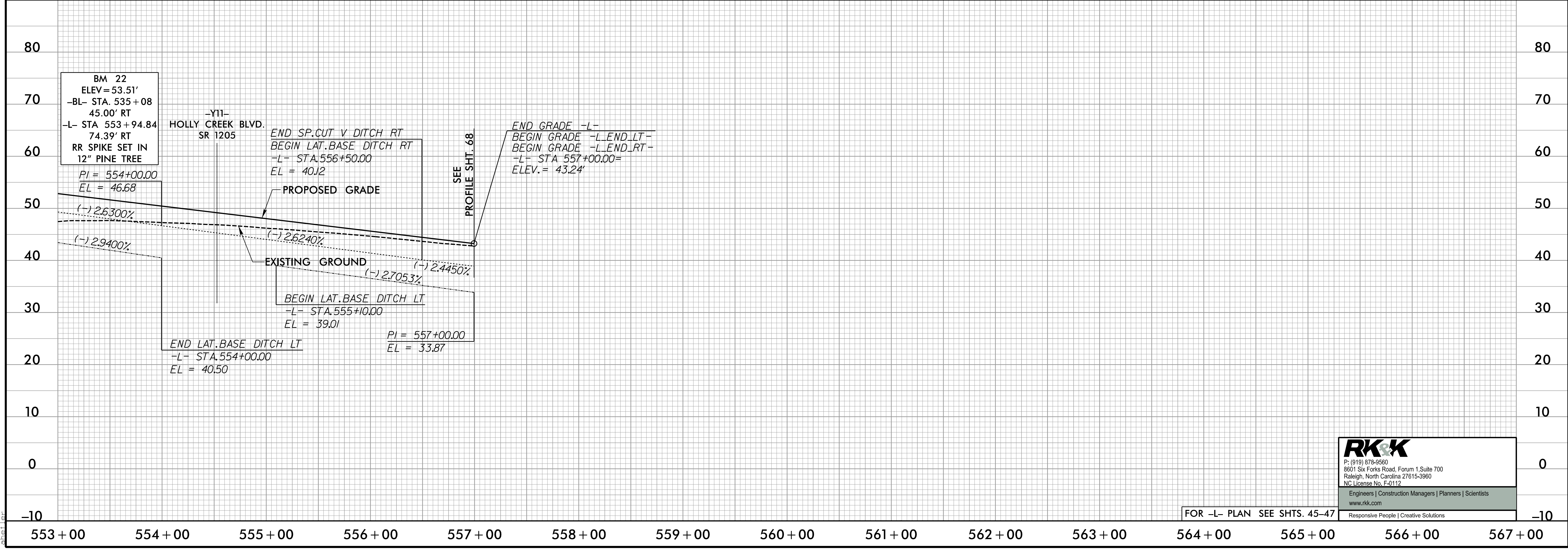
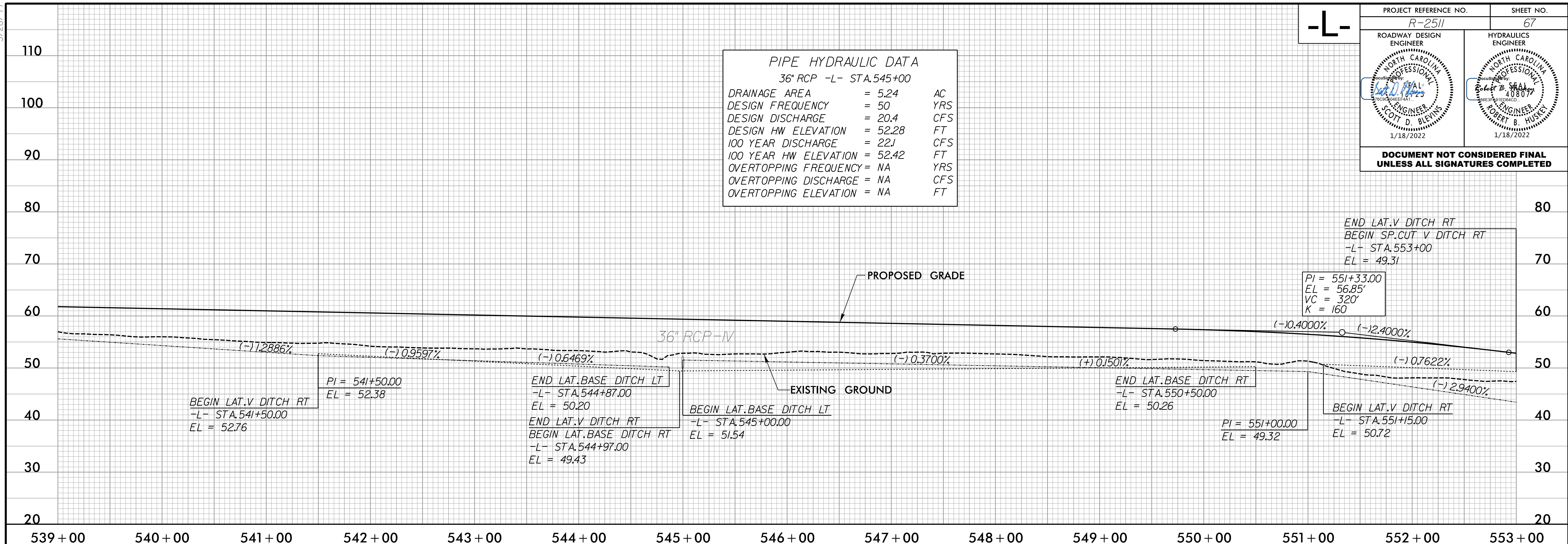
5/28/24

-L-

PROJECT REFERENCE NO. R-2511	SHEET NO. 67
ROADWAY DESIGN ENGINEER COTT D. BLEVINS 1/18/2022	HYDRAULICS ENGINEER ROBERT B. HUSTEY 1/18/2022

**PIPE HYDRAULIC DATA**  
36" RCP -L- STA.545+00

DRAINAGE AREA	= 5.24	AC
DESIGN FREQUENCY	= 50	YRS
DESIGN DISCHARGE	= 20.4	CFS
DESIGN HW ELEVATION	= 52.28	FT
100 YEAR DISCHARGE	= 22J	CFS
100 YEAR HW ELEVATION	= 52.42	FT
OVERTOPPING FREQUENCY	= NA	YRS
OVERTOPPING DISCHARGE	= NA	CFS
OVERTOPPING ELEVATION	= NA	FT



**RKK**  
 P: (919) 878-9560  
 8601 Six Forks Road, Forum 1, Suite 700  
 Raleigh, North Carolina 27615-3960  
 NC License No. F-0112  
 Engineers | Construction Managers | Planners | Scientists  
 www.rkk.com  
 Responsive People | Creative Solutions

FOR -L- PLAN SEE SHTS. 45-47

1/17/2022 R:\Projects\2024\2511\Proj\2511\_Rdy.plt167.dgn

5/28/22

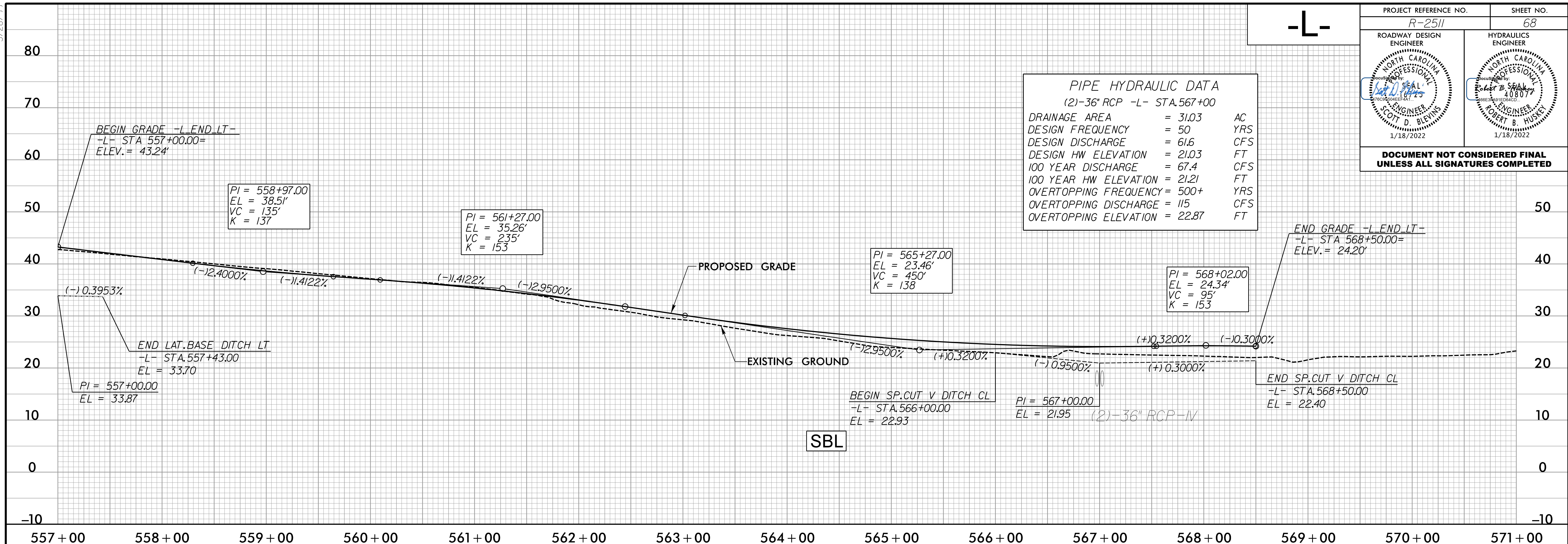
-L-

PROJECT REFERENCE NO. R-2511	SHEET NO. 68
ROADWAY DESIGN ENGINEER NORTH CAROLINA PROFESSIONAL ENGINEER J. D. Blevins 1/18/2022	HYDRAULICS ENGINEER NORTH CAROLINA PROFESSIONAL ENGINEER Robert B. Stealy 1/18/2022

DOCUMENT NOT CONSIDERED FINAL UNLESS ALL SIGNATURES COMPLETED

**PIPE HYDRAULIC DATA**  
(2)-36" RCP -L- STA.567+00

DRAINAGE AREA	= 31.03	AC
DESIGN FREQUENCY	= 50	YRS
DESIGN DISCHARGE	= 61.6	CFS
DESIGN HW ELEVATION	= 21.03	FT
100 YEAR DISCHARGE	= 67.4	CFS
100 YEAR HW ELEVATION	= 21.21	FT
OVERTOPPING FREQUENCY	= 500+	YRS
OVERTOPPING DISCHARGE	= 115	CFS
OVERTOPPING ELEVATION	= 22.87	FT

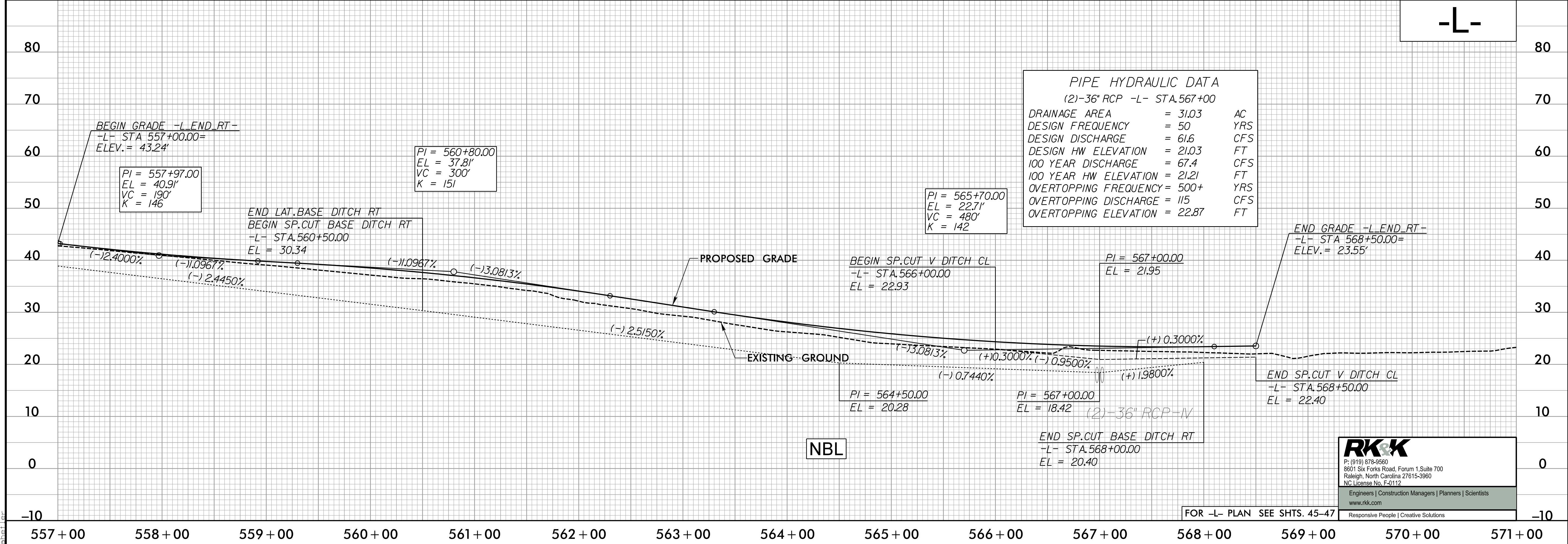


I:\7\2022\Projects\2511\RDY\p168.dgn

-L-

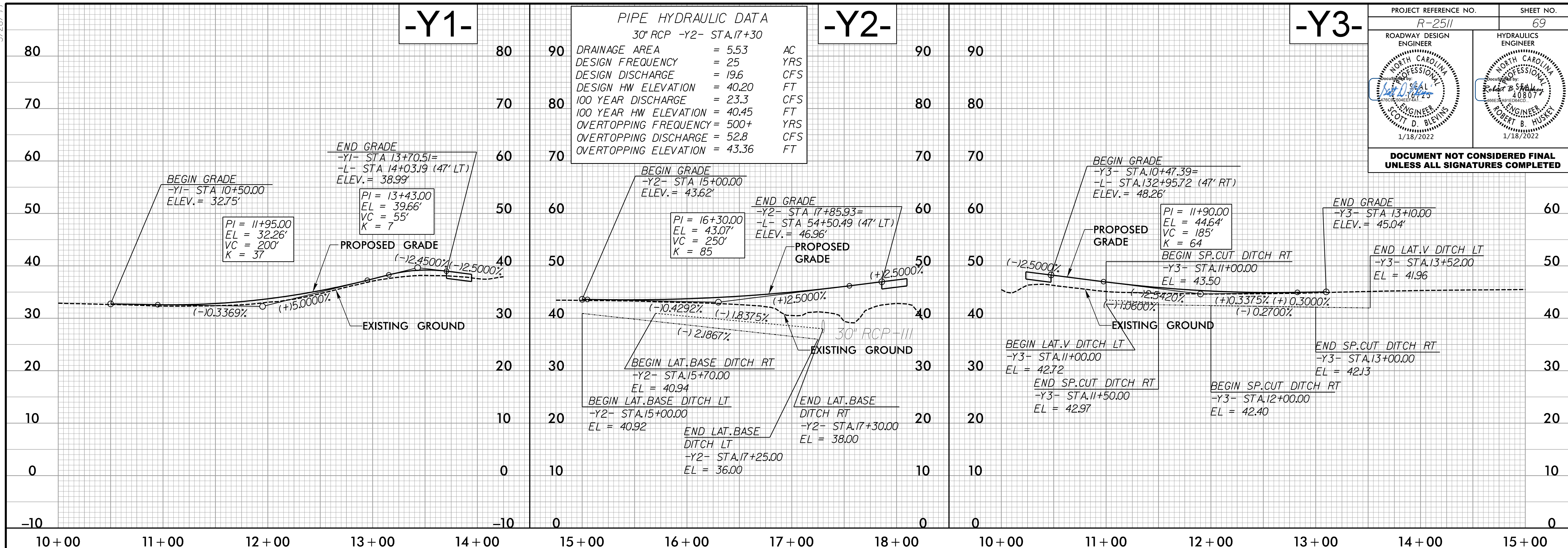
**PIPE HYDRAULIC DATA**  
(2)-36" RCP -L- STA.567+00

DRAINAGE AREA	= 31.03	AC
DESIGN FREQUENCY	= 50	YRS
DESIGN DISCHARGE	= 61.6	CFS
DESIGN HW ELEVATION	= 21.03	FT
100 YEAR DISCHARGE	= 67.4	CFS
100 YEAR HW ELEVATION	= 21.21	FT
OVERTOPPING FREQUENCY	= 500+	YRS
OVERTOPPING DISCHARGE	= 115	CFS
OVERTOPPING ELEVATION	= 22.87	FT



**RK&K**  
 P: (919) 978-9560  
 8601 Six Forks Road, Forum 1, Suite 700  
 Raleigh, North Carolina 27615-3960  
 NC License No. F-0112  
 Engineers | Construction Managers | Planners | Scientists  
 www.rkk.com  
 Responsive People | Creative Solutions

FOR -L- PLAN SEE SHTS. 45-47

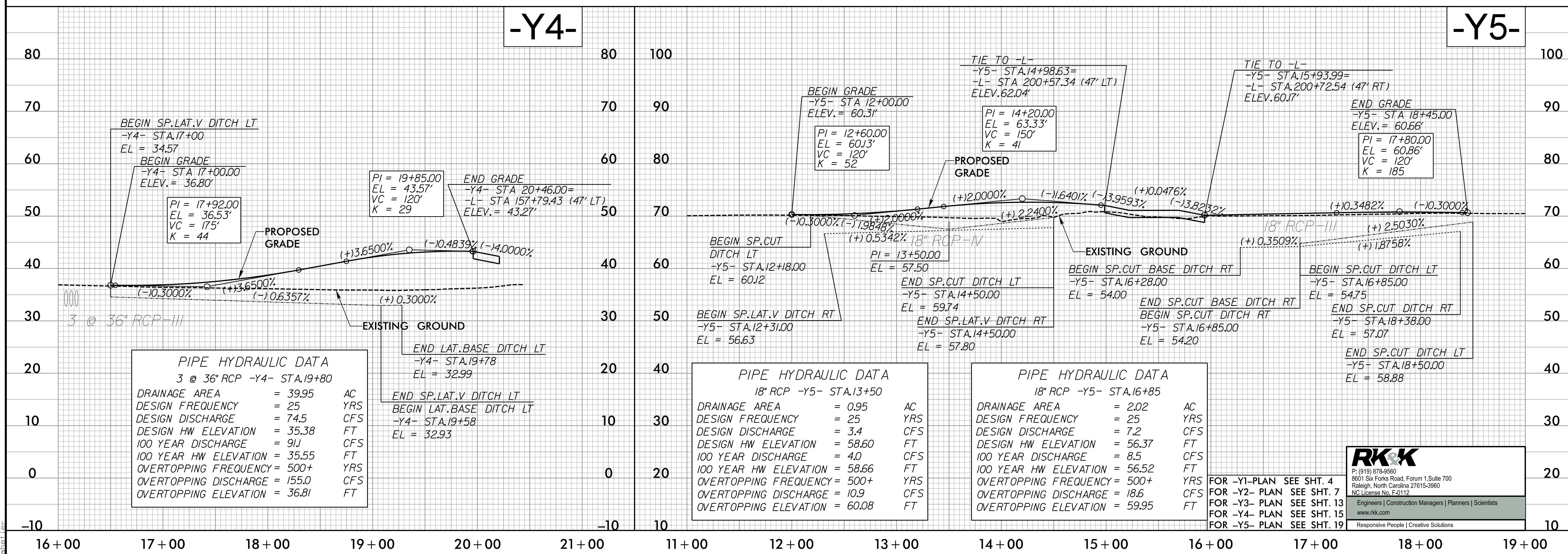


PROJECT REFERENCE NO. R-2511 SHEET NO. 69

ROADWAY DESIGN ENGINEER  
SCOTT D. BLEVINS  
1/18/2022

HYDRAULICS ENGINEER  
ROBERT B. HUSKEY  
1/18/2022

DOCUMENT NOT CONSIDERED FINAL UNLESS ALL SIGNATURES COMPLETED

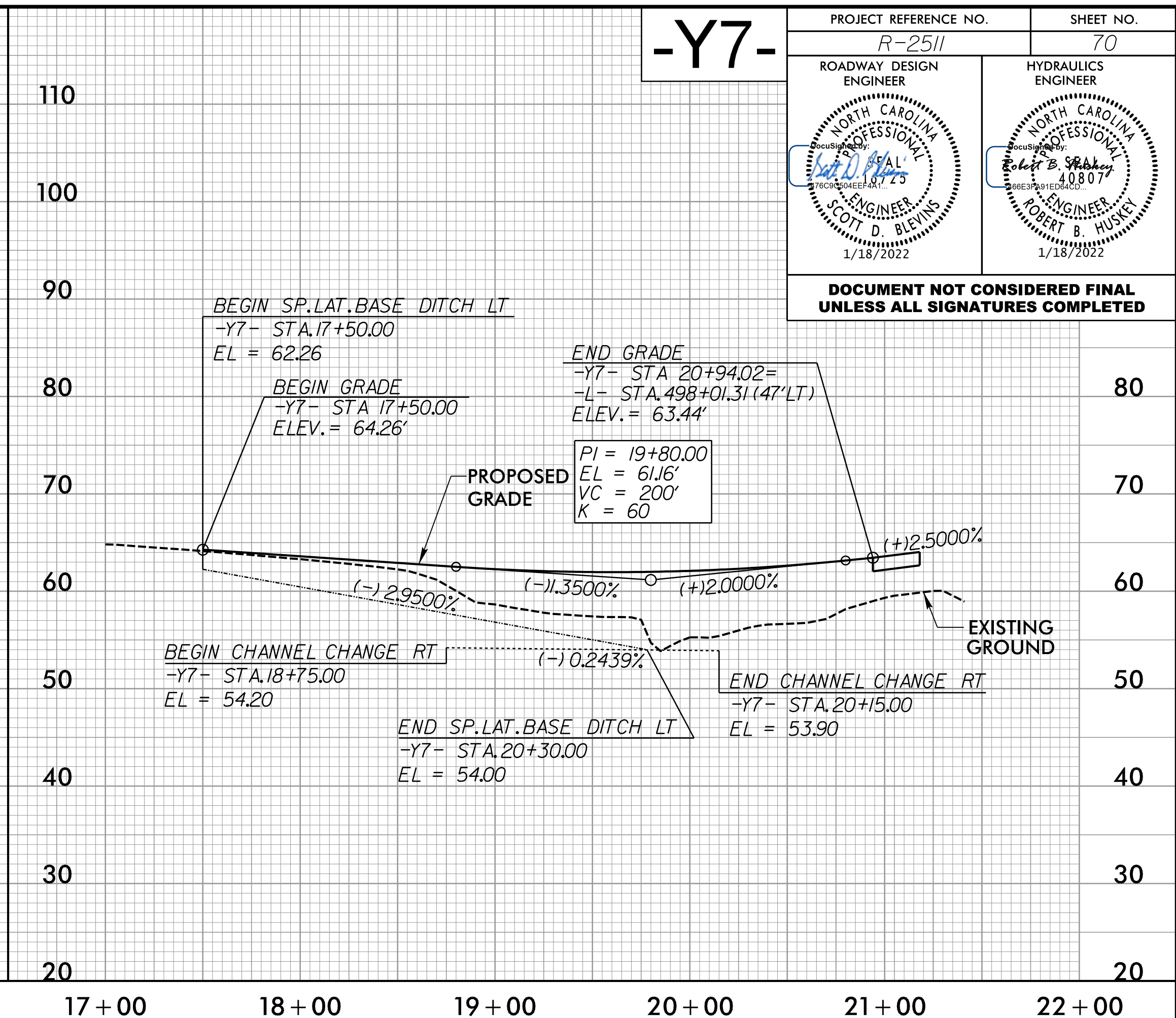
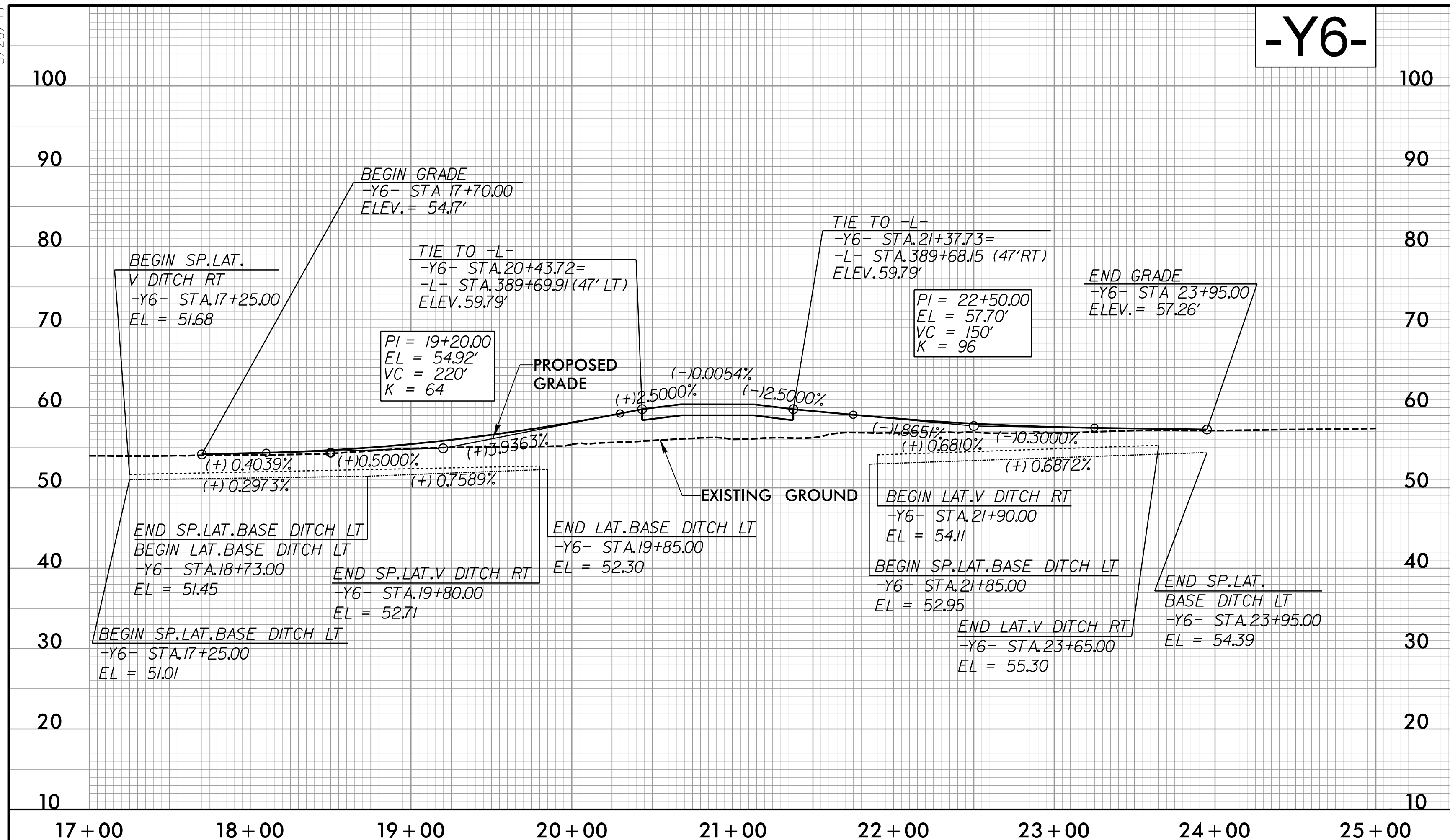


**RK&K**  
P: (919) 978-9550  
8601 Six Forks Road, Forum 1, Suite 700  
Raleigh, North Carolina 27615-3960  
NC License No. F-0112  
www.rkk.com

FOR -Y1- PLAN SEE SHT. 4  
FOR -Y2- PLAN SEE SHT. 7  
FOR -Y3- PLAN SEE SHT. 13  
FOR -Y4- PLAN SEE SHT. 15  
FOR -Y5- PLAN SEE SHT. 19

5/28/24

I:\72022\04\05\N\Proj\2511\_Rdy\_p170.dgn



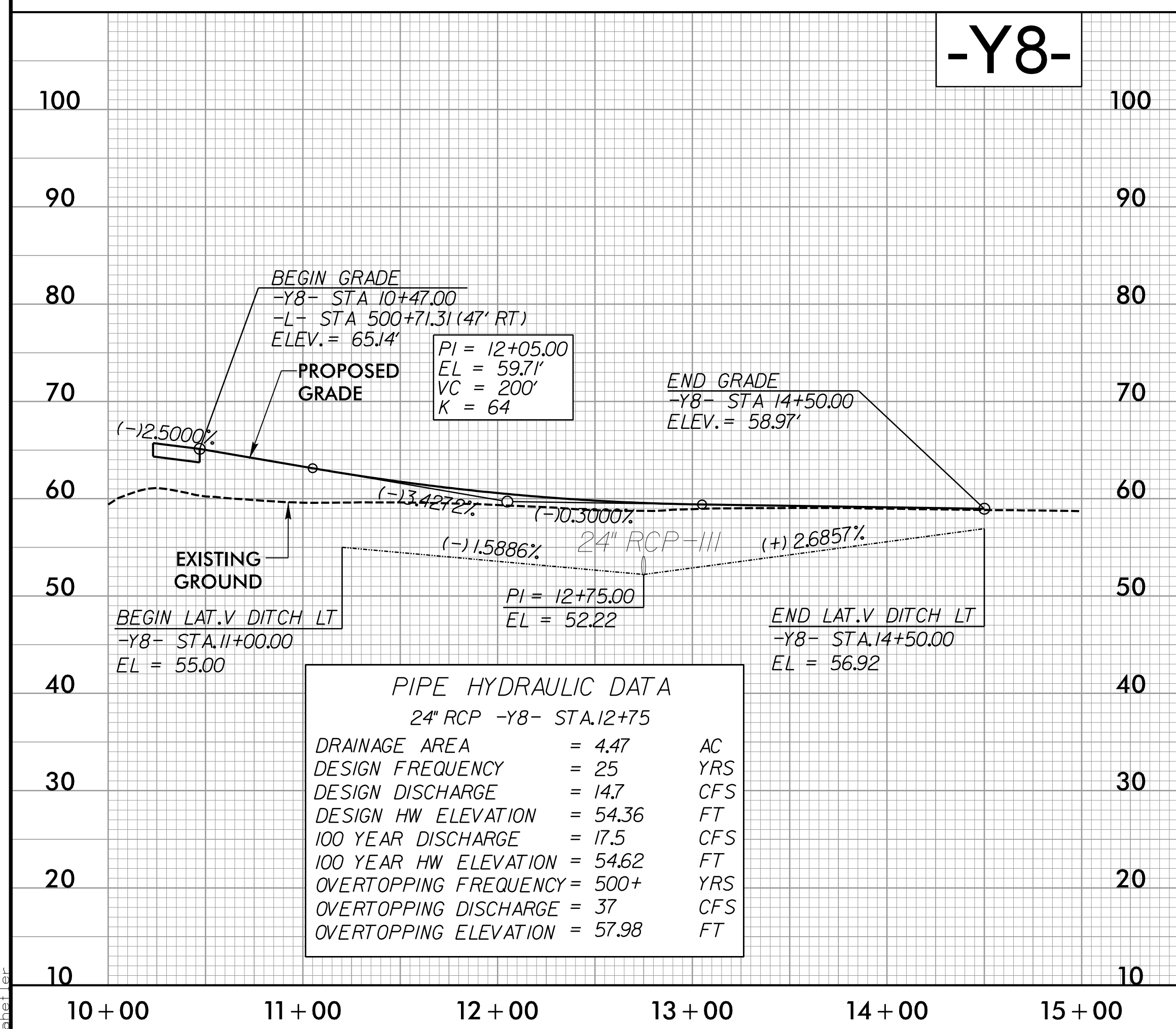
PROJECT REFERENCE NO. R-2511 SHEET NO. 70

ROADWAY DESIGN ENGINEER: [Signature]

HYDRAULICS ENGINEER: [Signature]

1/18/2022

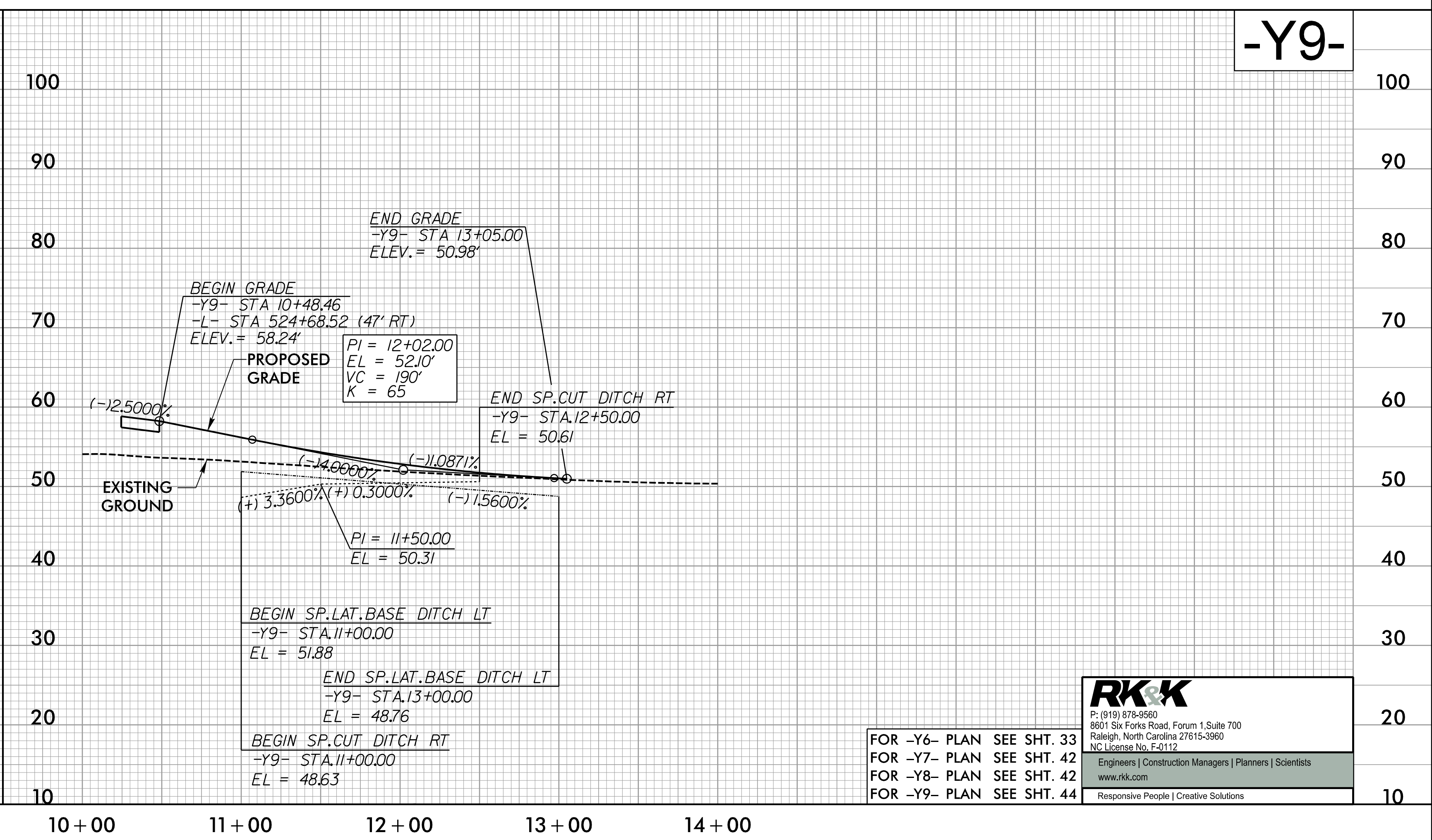
**DOCUMENT NOT CONSIDERED FINAL UNLESS ALL SIGNATURES COMPLETED**



**PIPE HYDRAULIC DATA**

24" RCP -Y8- STA.12+75

DRAINAGE AREA	= 4.47	AC
DESIGN FREQUENCY	= 25	YRS
DESIGN DISCHARGE	= 14.7	CFS
DESIGN HW ELEVATION	= 54.36	FT
100 YEAR DISCHARGE	= 17.5	CFS
100 YEAR HW ELEVATION	= 54.62	FT
OVERTOPPING FREQUENCY	= 500+	YRS
OVERTOPPING DISCHARGE	= 37	CFS
OVERTOPPING ELEVATION	= 57.98	FT



FOR -Y6- PLAN SEE SHT. 33  
 FOR -Y7- PLAN SEE SHT. 42  
 FOR -Y8- PLAN SEE SHT. 42  
 FOR -Y9- PLAN SEE SHT. 44

**RK&K**

P: (919) 878-9550  
 8601 Six Forks Road, Forum 1, Suite 700  
 Raleigh, North Carolina 27615-3960  
 NC License No. F-0112

Engineers | Construction Managers | Planners | Scientists  
 www.rkk.com  
 Responsive People | Creative Solutions



5/28/22

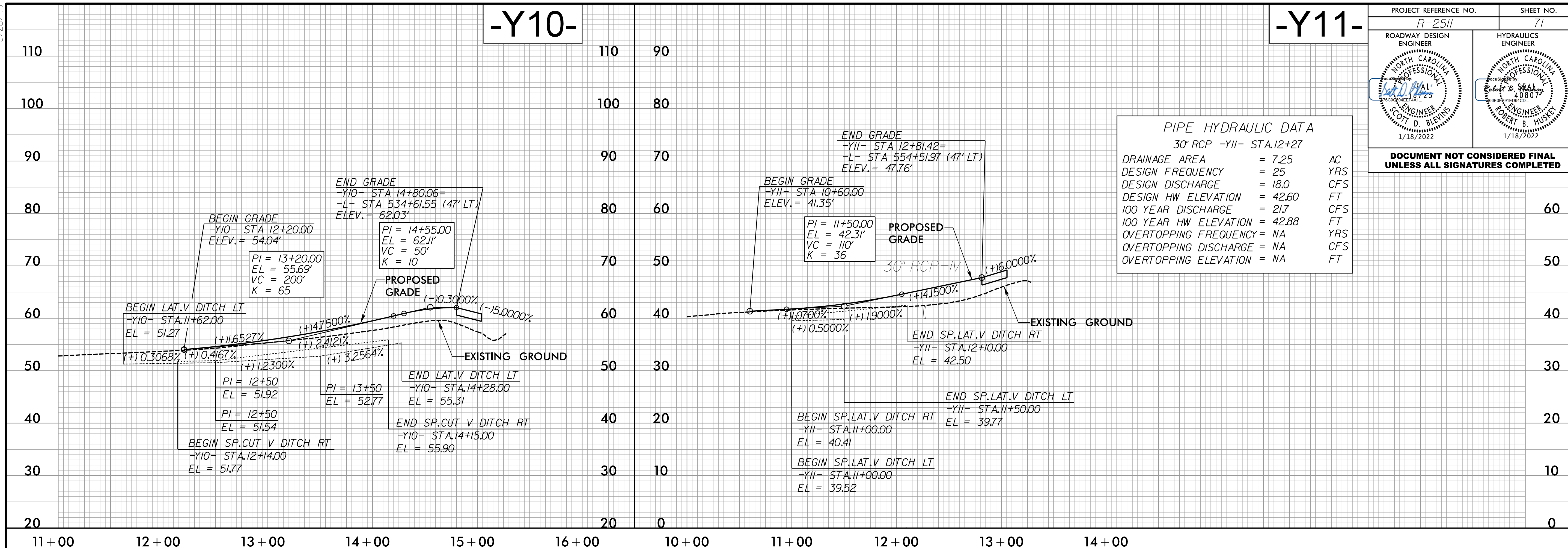
# -Y10-

# -Y11-

PROJECT REFERENCE NO. R-2511	SHEET NO. 71
ROADWAY DESIGN ENGINEER <i>[Signature]</i> SCOTT D. BLEVINS 1/18/2022	HYDRAULICS ENGINEER <i>[Signature]</i> ROBERT B. HUSKEY 1/18/2022

DOCUMENT NOT CONSIDERED FINAL UNLESS ALL SIGNATURES COMPLETED

30" RCP -Y11- STA.12+27	
DRAINAGE AREA	= 7.25 AC
DESIGN FREQUENCY	= 25 YRS
DESIGN DISCHARGE	= 18.0 CFS
DESIGN HW ELEVATION	= 42.60 FT
100 YEAR DISCHARGE	= 21.7 CFS
100 YEAR HW ELEVATION	= 42.88 FT
OVERTOPPING FREQUENCY	= NA YRS
OVERTOPPING DISCHARGE	= NA CFS
OVERTOPPING ELEVATION	= NA FT



I:\7/2022\11-2511\11-2511-Rdy-pf171.dgn

FOR -Y10- PLAN SEE SHT. 45  
FOR -Y11- PLAN SEE SHT. 46

**RK&K**  
 P: (919) 878-9560  
 8601 Six Forks Road, Forum 1, Suite 700  
 Raleigh, North Carolina 27615-3960  
 NC License No. F-0112  
 Engineers | Construction Managers | Planners | Scientists  
 www.rkk.com  
 Responsive People | Creative Solutions