

**This electronic collection of documents is provided  
for the convenience of the user  
and is Not a Certified Document –**

**The documents contained herein were originally issued  
and sealed by the individuals whose names and license  
numbers appear on each page, on the dates appearing  
with their signature on that page.**

**This file or an individual page  
shall not be considered a certified document.**

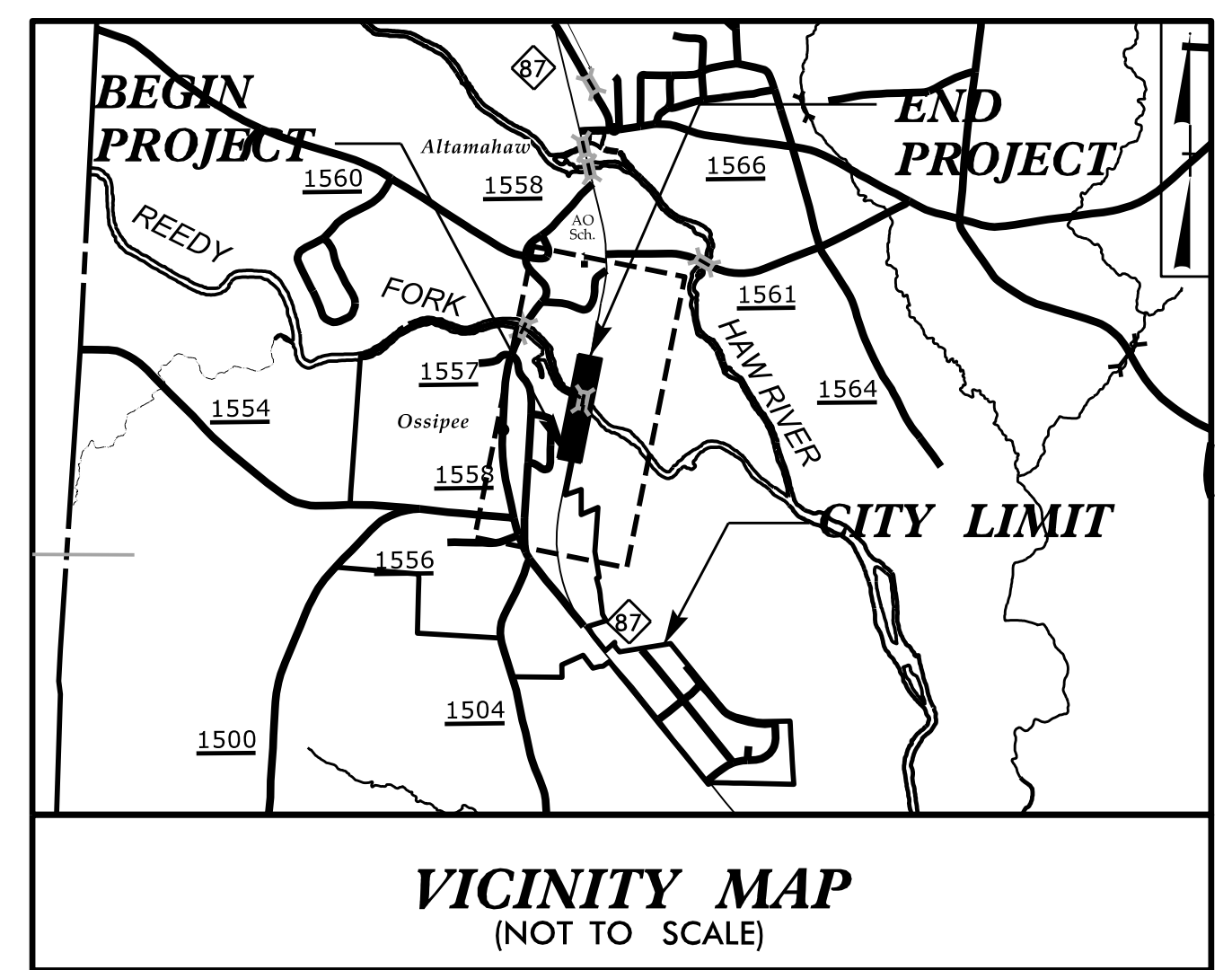
09/08/99  
 SYSTEM\$\$\$\$  
 DN\$\$\$\$  
 USERNAME\$\$\$\$

**TIP PROJECT: B-5728**

STATE OF NORTH CAROLINA  
DIVISION OF HIGHWAYS

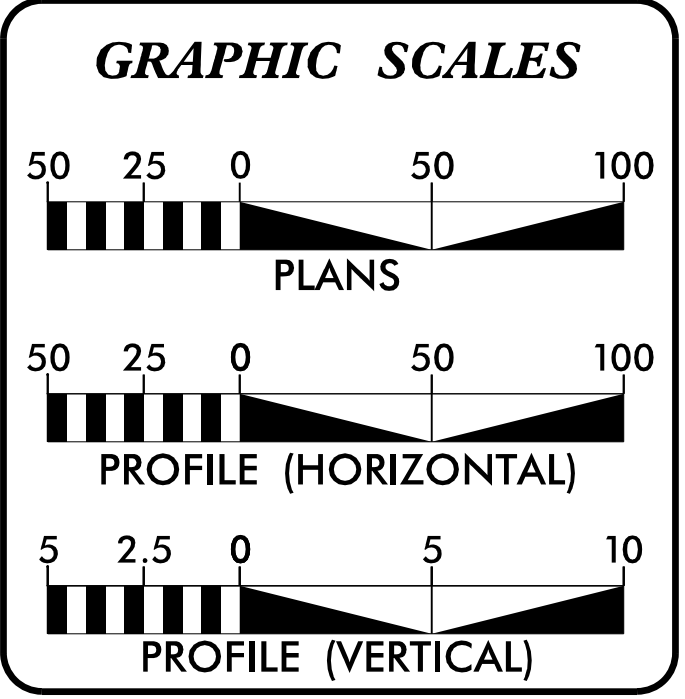
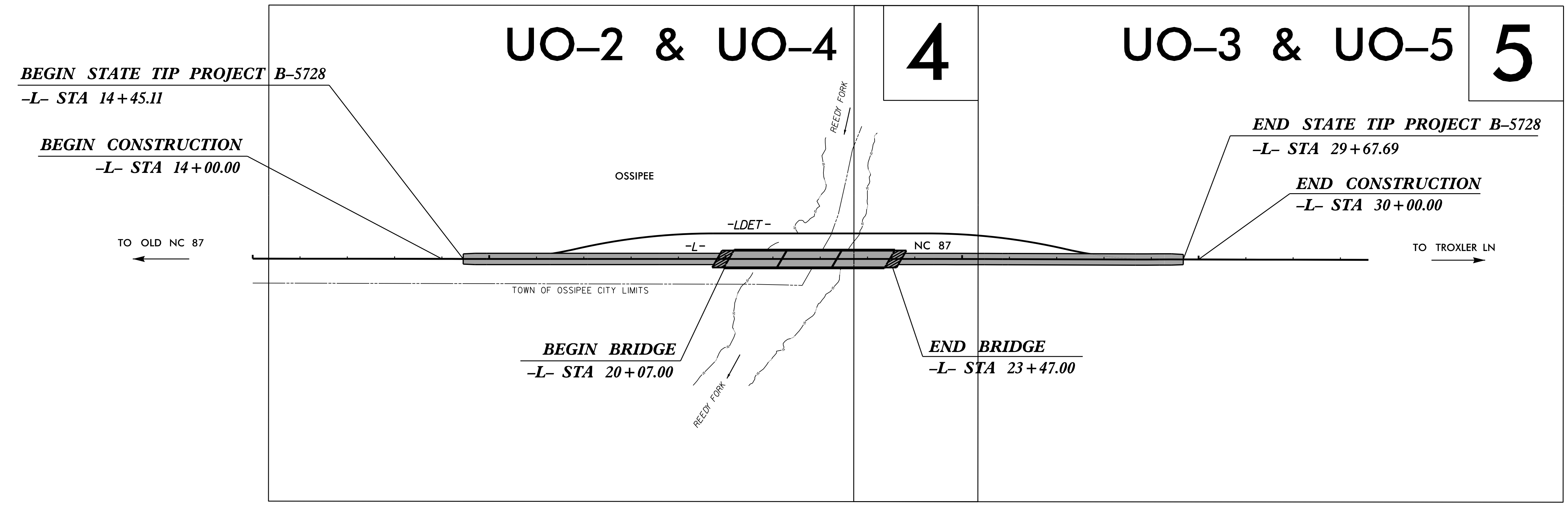
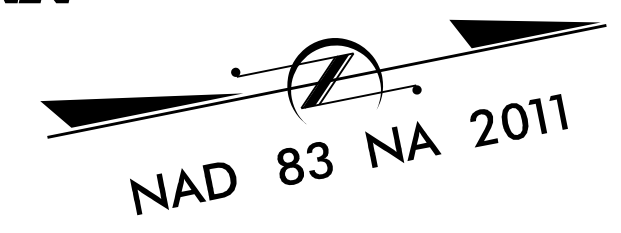
T.I.P. NO.	SHEET NO.
B-5728	UO-1

NOTE:  
ALL UTILITY WORK SHOWN ON THIS SHEET IS DONE BY OTHERS.  
NO PAYMENT WILL BE MADE TO THE CONTRACTOR FOR UTILITY WORK SHOWN ON THIS SHEET.



**UTILITIES BY OTHERS PLANS  
ALAMANCE COUNTY**

LOCATION: REPLACEMENT OF BRIDGE NO. 000112 OVER REEDY FORK  
ON NC 87  
TYPE OF WORK: UTILITIES BY OTHERS



**INDEX OF SHEETS**

SHEET NO.:	DESCRIPTION:
UO-1	TITLE SHEET
UO-1A	UBO NOTES
UO-2 - UO-5	UBO PLAN SHEETS

**UTILITIES OWNERS WITH CONFLICTS**

A)	POWER (DISTRIBUTION) - DUKE ENERGY
B)	COMMUNICATIONS - AT&T
C)	GAS (TRANSMISSION) - CARDINAL/WILLIAMS PIPELINE

PREPARED IN THE OFFICE OF:

**DAVIS • MARTIN • POWELL**  
ENGINEERS & SURVEYORS

6415 OLD PLANK RD., HIGH POINT, NC 27265  
PHONE: (336)886-4821 FAX: (336)886-4458  
WWW.DMP-INC.COM LICENSE: F-0245

Andy Larrick, P.E.	UTILITY PROJECT MANAGER
Kelly Hayes, P.E., P.L.S.	PROJECT UTILITY COORDINATOR
Steve McKee, P.E.	PROJECT UTILITY COORDINATOR

**DIVISION OF HIGHWAYS  
UTILITIES UNIT**

1555 MAIL SERVICE CENTER  
RALEIGH, NC 27699-1555  
PHONE (919) 707-6690  
FAX (919) 250-4151

Amy York	CENTRAL UTILITIES MANAGER
Ali Kouchehi, P.E.	REGIONAL UTILITIES ENGINEER
Jon Loughry	SENIOR UTILITIES ENGINEER
Dayton Martin	REGIONAL UTILITY COORDINATOR
Tanga Sampson	SENIOR UTILITY COORDINATOR

5/14/99

# UTILITIES BY OTHERS PROJECT SPECIFIC NOTES:

PROJECT REFERENCE NO.	SHEET NO.
B-5728	UO-1A

## UTILITIES BY OTHERS

### WILLIAMS (I.E., CARDINAL PIPELINE COMPANY, L.L.C.) REQUIREMENTS:

#### PIPELINE FACILITIES AND LEGISLATION:

1. WILLIAMS' TRANSMISSION OPERATION INCLUDES HIGH-PRESSURE STEEL PIPELINES RANGING IN DIAMETER FROM 2" TO 48". WILLIAMS PIPELINE FACILITIES INCLUDE COMPRESSOR STATIONS, METER STATIONS, STORAGE FACILITIES, CATHODIC PROTECTION EQUIPMENT, VALVE SETTINGS AND OTHER FACILITIES LOCATED WITHIN THE LIMITS OF ITS RIGHTS-OF-WAY, LEASED, AND FEE PROPERTIES.
2. WILLIAMS IS REGULATED BY THE DEPARTMENT OF TRANSPORTATION, PIPELINE & HAZARDOUS MATERIAL SAFETY ADMINISTRATION (PHMSA). THE PIPELINE SAFETY REGULATIONS ARE SET FORTH IN TITLE 49, CODE OF FEDERAL REGULATIONS, PART 192 "TRANSPORTATION OF NATURAL AND OTHER GAS BY PIPELINE MINIMUM FEDERAL STANDARDS."
3. WILLIAMS REQUIRES THAT ALL FEDERAL, STATE, AND LOCAL ORDINANCES AND APPLICABLE UTILITY SET BACKS ARE COMPLIED WITH TO THE FULL EXTENT.

#### NOTIFICATION AND CONSTRUCTION SAFETY REQUIREMENTS:

1. IN ORDER TO PREVENT UNNECESSARY DELAYS, WILLIAMS ENCOURAGES CLOSE COMMUNICATION WITH OUR REPRESENTATIVE THROUGHOUT YOUR ENTIRE PROJECT. A WILLIAMS REPRESENTATIVE SHOULD PARTICIPATE IN ALL PRE- CONSTRUCTION MEETINGS. IN ADDITION, WILLIAMS CAN CONDUCT A SAFETY/INFORMATIONAL PRESENTATION TO ANY INTERESTED PARTIES, INCLUDING CONTRACTORS, LOCAL GOVERNMENTAL MAINTENANCE CREWS, AND DEVELOPERS.
2. "ONE CALL" SYSTEMS REQUIRE 48 TO 72 HOURS' NOTICE PRIOR TO ANY EXCAVATION ACTIVITIES OR EQUIPMENT USE ON OR IN CLOSE PROXIMITY TO WILLIAMS PIPELINE FACILITIES. DIAL 811 TO BE CONNECTED TO YOUR STATE ONE CALL SYSTEM. NO EQUIPMENT USE OR EXCAVATION WILL OCCUR IN THE VICINITY OF WILLIAMS FACILITIES UNTIL NOTIFICATION TO "ONE CALL" HAS BEEN MADE. A WILLIAMS REPRESENTATIVE WILL BE ON SITE PRIOR TO AND DURING ANY EQUIPMENT USE OR EXCAVATION ACTIVITIES. ANY CROSSINGS MADE WITHOUT A WILLIAMS REPRESENTATIVE ON SITE WILL BE EXCAVATED AT THE EXCAVATOR'S EXPENSE TO PROVIDE WILLIAMS AN OPPORTUNITY TO INSPECT ALL AFFECTED PIPELINE FACILITIES.
3. EXCAVATIONS MUST BE BARRICADED TO PROTECT WILLIAMS PIPELINES FROM EXPOSURE TO VEHICULAR TRAFFIC AND TO ENSURE PUBLIC SAFETY. WILLIAMS REPRESENTATIVES MUST BE PROVIDED SAFE ACCESS TO ALL OPEN EXCAVATIONS. EXCAVATIONS MUST BE PROPERLY SLOPED OR SHORED IN ACCORDANCE WITH OSHA REGULATIONS.

#### GENERAL REQUIREMENTS:

1. NO ABOVEGROUND STRUCTURES OR APPURTENANCES ARE TO BE LOCATED WITHIN THE WILLIAMS RIGHT OF WAY. THE STRUCTURES AND APPURTENANCES INCLUDE, BUT ARE NOT LIMITED TO: UTILITY POLES, TOWERS, FOUNDATIONS, GUY WIRES, STRUCTURES SUPPORTING AERIAL LINES, SATELLITE DISHES, MANHOLES, CATCH BASINS, UTILITY PEDESTALS, TRANSFORMERS, FIRE HYDRANTS, UTILITY SHEDS, DECKS, SWIMMING POOLS WITH ASSOCIATED IMPROVEMENTS, ETC.
2. AN AUTHORIZED WILLIAMS REPRESENTATIVE MUST BE ON SITE PRIOR TO AND DURING ANY SURFACE-DISTURBING WORK OR EQUIPMENT CROSSINGS PERFORMED WITHIN THE RIGHT OF WAY. WILLIAMS REPRESENTATIVE WILL ASSIST IN DETERMINING THE LOCATION OF THE PIPELINE, THE RIGHT OF WAY WIDTH, AND EXISTING COVER OVER THE PIPELINE AND WILL REMAIN ON SITE TO MONITOR ALL ACTIVITIES WITHIN THE RIGHT OF WAY.
3. NO CUT OR FILL ON THE WILLIAMS RIGHT OF WAY IS PERMITTED WITHOUT WILLIAMS WRITTEN APPROVAL.
4. WILLIAMS, AT ITS DISCRETION, MAY REQUEST EVIDENCE OF COMPREHENSIVE GENERAL LIABILITY INSURANCE COVERAGE (UP TO \$5,000,000 COVERAGE) AND OTHER APPROPRIATE AND USUAL INSURANCE PRIOR TO ANY ACTIVITY, MAINTENANCE, AND/OR CONSTRUCTION ON OR NEAR WILLIAMS RIGHT OF WAY AND FACILITIES. IN THE EVENT OF SIGNIFICANT EXCAVATION UNDER OR OVER WILLIAMS PIPELINES, WILLIAMS WILL REQUIRE THAT THE APPLICABLE WILLIAMS PIPELINE COMPANY BE NAMED AS ADDITIONAL INSURED ON THE CERTIFICATE OF LIABILITY INSURANCE. THE INSURANCE LIMITS, TERMS, AND CONDITIONS THAT MAY BE REQUIRED WILL BE DEPENDENT ON THE SPECIFIC FACILITIES POTENTIALLY IMPACTED AND WHAT WOULD BE USUALLY AND PRUDENTLY OBTAINED IN SIMILAR INDUSTRY SITUATIONS.
5. ALL FOREIGN LINES WILL CROSS WILLIAMS RIGHT OF WAY AT AN ANGLE AS NEAR TO 90 DEGREES AS POSSIBLE. IN SITUATIONS WHERE THERE ARE MULTIPLE PARALLEL WILLIAMS PIPELINES, THE PROPOSED FOREIGN LINES WILL EITHER CROSS OVER OR UNDER ALL OF WILLIAMS PIPELINES IN THE RIGHT OF WAY. NO HORIZONTAL OR VERTICAL BENDS ARE PERMITTED WITHIN WILLIAMS RIGHT OF WAY. PARALLEL OCCUPANCY OF WILLIAMS RIGHT OF WAY WILL NOT BE PERMITTED.
6. ALL FOREIGN LINES CROSSING WILLIAMS PIPELINE OR RELATED FACILITIES WILL BE INSTALLED WITH A MINIMUM OF 24" OF CLEARANCE BETWEEN THE EXISTING WILLIAMS FACILITIES AND THE PROPOSED FOREIGN LINE. THE FOREIGN LINE WILL BE INSTALLED AT A UNIFORM DEPTH ACROSS THE FULL WIDTH OF THE WILLIAMS RIGHT OF WAY. WILLIAMS MAY REQUIRE THAT ALL FOREIGN LINES BE INSTALLED UNDER ITS EXISTING PIPELINES AND RELATED FACILITIES.

7. WILLIAMS FACILITIES ARE ELECTRICALLY PROTECTED AGAINST CORROSION. EACH METALLIC FOREIGN LINE THAT ENTERS OR CROSSES WILLIAMS RIGHT OF WAY MUST HAVE A TEST LEAD INSTALLED. IN ADDITION, THE UTILITY CONTRACTOR INSTALLING THE METALLIC FOREIGN LINE MUST EXCAVATE AND EXPOSE ONE OR MORE OF WILLIAMS EXISTING PIPELINES TO PROVIDE FOR THE INSTALLATION OF TEST LEADS BY WILLIAMS EMPLOYEES. ALL NECESSARY MEASURES (COATINGS, ELECTRICAL BONDS, ETC.) WILL BE TAKEN TO ENSURE THAT THE PROPOSED PIPE OR UTILITY IS ADEQUATELY PROTECTED FROM POTENTIAL INTERFERENCE EFFECTS. REQUESTS FOR COOPERATIVE TESTING WILL BE DIRECTED TO WILLIAMS DIVISION OFFICE, "ATTN.: SUPERVISOR, ASSET INTEGRITY."

8. WILLIAMS MAY REQUIRE THAT FOREIGN LINES BE IDENTIFIED WITH PERMANENT ABOVEGROUND MARKERS WHERE THE LINES ENTER AND EXIT THE WILLIAMS RIGHT OF WAY. IT IS THE LINE OWNER'S RESPONSIBILITY TO OBTAIN ANY RIGHTS TO INSTALL THE MARKERS, AND TO MAINTAIN THE MARKERS. A DIRECT BURIAL WARNING TAPE SHOULD BE PLACED 12" TO 18" ABOVE THE FOREIGN LINE AND EXTEND ACROSS THE ENTIRE WIDTH OF WILLIAMS RIGHT OF WAY.

9. FOREIGN LINES CROSSING WILLIAMS FACILITIES WILL BE INSTALLED IN ACCORDANCE WITH ALL APPLICABLE CODES AND REQUIREMENTS GOVERNING SUCH INSTALLATIONS.

10. STOCKPILING BRUSH, TRASH, OR OTHER DEBRIS ON THE RIGHT OF WAY IS PROHIBITED, AS IT MAY CONCEAL PIPELINE MARKERS AND HINDER PIPELINE INSPECTIONS OR ROUTINE MAINTENANCE.

#### EXCAVATION AND BLASTING:

1. PLANS FOR EXCAVATION ON THE RIGHT OF WAY REQUIRE PRIOR APPROVAL BY WILLIAMS. NO MACHINE EXCAVATION WILL BE PERFORMED WITHIN 24" OF WILLIAMS PIPELINES OR RELATED FACILITIES. WILLIAMS ON-SITE REPRESENTATIVE MAY REQUIRE HAND DIGGING AT A DISTANCE GREATER THAN 24".

2. WHEN A BACKHOE IS USED FOR EXCAVATION, THE BUCKET TEETH SHOULD BE CURLED UNDER EACH TIME THE BUCKET IS BROUGHT BACK INTO THE DITCH TO REDUCE THE CHANCE OF THE TEETH CONTACTING THE PIPELINE. SIDE CUTTERS MUST BE REMOVED FROM ALL BUCKETS. AT THE DISCRETION OF WILLIAMS ON SITE REPRESENTATIVE, A BAR MAY HAVE TO BE WELDED ACROSS THE BUCKET TEETH.

3. NO MECHANICAL EXCAVATION MAY BE PERFORMED BY REACHING OVER ANY WILLIAMS FACILITIES.

4. PRIOR TO ANY PLOWING OR RIPPING OF SOIL ON THE RIGHT OF WAY, PARTICULARLY IN ASSOCIATION WITH AGRICULTURAL ACTIVITIES, PLANS SHOULD BE REVIEWED WITH YOUR LOCAL WILLIAMS REPRESENTATIVE TO ENSURE PROPER COVER EXISTS. NO VIBRATORY PLOWS ARE PERMITTED TO BE USED ON THE WILLIAMS RIGHT OF WAY.

5. A DETAILED BLASTING PLAN MUST BE SUBMITTED FOR REVIEW AND WRITTEN AUTHORIZATION PRIOR TO ANY PROPOSED BLASTING WITHIN 200' (1,500' FOR SURFACE MINING) OF WILLIAMS PIPELINE FACILITIES AND A WILLIAMS REPRESENTATIVE MUST BE ON SITE DURING ALL BLASTING. IN ORDER TO PROVIDE FOR NECESSARY AND APPROPRIATE ANALYSIS BY WILLIAMS, EACH LICENSED BLASTING CONTRACTOR MUST ALSO COMPLETE AND SUBMIT A WILLIAMS BLASTING DATA SHEET. THE BLASTING PLAN AND DATA SHEETS MUST BE SUBMITTED A MINIMUM OF TEN BUSINESS DAYS PRIOR TO THE PROPOSED BLASTING. SPECIFIC REQUIREMENTS APPLICABLE TO PROPOSED BLASTING WILL BE PROVIDED TO THE LICENSED BLASTING CONTRACTOR.

#### EQUIPMENT CROSSING:

1. TO PROTECT WILLIAMS PIPELINES FROM EXTERNAL LOADING, WILLIAMS MUST PERFORM AN ENGINEERING EVALUATION TO DETERMINE THE EFFECTS OF ANY PROPOSED EQUIPMENT USE. MATS, TIMBER BRIDGES, OR OTHER PROTECTIVE MATERIALS DEEMED NECESSARY BY WILLIAMS WILL BE PLACED OVER WILLIAMS FACILITIES FOR THE DURATION OF ANY LOADING. PROTECTIVE MATERIALS WILL BE PURCHASED, PLACED, AND REMOVED AT NO COST TO WILLIAMS. THE RIGHT OF WAY MUST BE RETURNED TO ITS ORIGINAL CONDITION.

2. WILLIAMS MAY REQUIRE TEMPORARY MARKINGS TO IDENTIFY AREAS WHERE EQUIPMENT USE IS AUTHORIZED.

3. NO VIBRATORY EQUIPMENT IS PERMITTED WITHIN THE LIMITS OF, OR IN CLOSE PROXIMITY TO, THE WILLIAMS RIGHT OF WAY.

#### FENCES:

1. A SITE-SPECIFIC INSPECTION IS REQUIRED TO DETERMINE WHETHER THE PROPOSED FENCE POSTS MUST BE KEPT A MINIMUM OF 4' OR 5' FROM THE EDGE OF ANY WILLIAMS PIPELINE OR RELATED PIPELINE FACILITY. A WILLIAMS REPRESENTATIVE MUST BE ON SITE TO DETERMINE THE LOCATION OF THE FENCE POSTS WITHIN THE RIGHT OF WAY AND FOR THE DURATION OF THE DIGGING OF THE POSTS. POSTS INSTALLED WITHIN THE RIGHT OF WAY MUST BE HAND DUG. ALL PROPOSED FENCE CROSSINGS OVER WILLIAMS PIPELINES WILL CROSS AT AN ANGLE OF 90°, OR AS NEAR AS REASONABLY PRACTICABLE.

2. WILLIAMS WILL HAVE THE FREE RIGHT OF INGRESS AND EGRESS. WILLIAMS MAY REQUIRE THAT NEW FENCES HAVE A 12' WIDE GATE INSTALLED WITHIN THE RIGHT OF WAY AT A LOCATION APPROVED BY WILLIAMS. THE GATE WILL BE INSTALLED AS TO MINIMIZE VEHICULAR AND EQUIPMENT TRAVEL OVER THE EXISTING WILLIAMS FACILITIES.

#### LOGGING AND TIMBER OPERATIONS:

1. BEFORE ANY LOGGING OR TIMBER OPERATIONS CAN BEGIN ON COMPANY RIGHT OF WAY, OBTAIN WRITTEN APPROVAL FROM THE COMPANY.
2. ADDITIONAL REQUIREMENTS MAY INCLUDE, BUT ARE NOT LIMITED TO, THE INSTALLATION OF LAND RAMPS, PLATES, OR TEMPORARY EROSION CONTROLS.
3. REFER TO INSURANCE REQUIREMENT IN #4 OF THE GENERAL REQUIREMENTS ABOVE.
4. AN AUTHORIZED COMPANY REPRESENTATIVE MUST BE ON SITE PRIOR TO AND DURING ANY SURFACE DISTURBING WORK OR EQUIPMENT CROSSING PERFORMED WITHIN THE ROW.
5. THE ENCROACHING ENTITY MUST MEET WITH A COMPANY REPRESENTATIVE AT LEAST THREE DAYS PRIOR TO THE COMPLETION OF THE PROJECT TO DISCUSS SITE RESTORATION.

#### OVERHEAD CROSSING UTILITY:

1. OVERHEAD LINE CROSSINGS WILL BE INSTALLED WITH A MINIMUM OF 30' OF VERTICAL CLEARANCE ABOVE THE WILLIAMS RIGHT OF WAY TO PROVIDE ADEQUATE EQUIPMENT CLEARANCE. NO POLES OR APPURTENANCES WILL BE LOCATED ON THE WILLIAMS RIGHT OF WAY.
2. OVERHEAD LINE CROSSINGS WILL NOT BE INSTALLED WITHIN 25' (MEASURED HORIZONTALLY) OF ANY GAS VENT (E.G. RELIEF VALVE, BLOW DOWN VENT).
3. OVERHEAD LINES WILL CROSS WILLIAMS FACILITIES AT AN ANGLE AS NEAR TO 90 DEGREES AS POSSIBLE.
4. IN ADDITION TO THESE WILLIAMS MINIMUM CLEARANCES, ALL LOCAL UTILITY MINIMUM CLEARANCES MUST BE ADHERED TO.

#### ROAD, RAIL, PAVED AND UNPAVED TRANSPORTATION:

1. THE RECOMMENDED MINIMUM TOTAL COVER OVER WILLIAMS EXISTING PIPELINES IS 66" AT ALL DRIVEWAYS, HIGHWAYS, ROADS, STREETS, ETC. THE RECOMMENDED MINIMUM TOTAL COVER OVER WILLIAMS EXISTING PIPELINES IN ADJACENT DRAINAGE DITCHES IS 48".
2. VIBRATORY EQUIPMENT IS PROHIBITED WITHIN THE LIMITS OF THE WILLIAMS RIGHT OF WAY. VIBRATORY EQUIPMENT IS NOT PERMITTED TO BE USED FOR ACHIEVING APPLICABLE COMPACTION REQUIREMENTS.
3. WILLIAMS WILL RETAIN THE RIGHT TO CUT ALL PRESENT AND PROPOSED DRIVEWAYS, HIGHWAYS, ROADS, STREETS, ETC. AND WILL HAVE NO RESPONSIBILITY FOR RESTORATION, LOSS OF USE OR ACCESS, OR ANY OTHER COSTS. ACCESS TO THE EARTH ABOVE EACH PIPELINE FOR LEAK DETECTION (FLAME IONIZATION) AND CATHODIC PROTECTION SURVEYS MUST BE MAINTAINED.

#### SURFACE WATER:

1. WILLIAMS MAY CONDUCT PRELIMINARY ENGINEERING STUDIES FOR ANY PROPOSED DRAINAGE CHANNELS OR DITCHES THAT WILL DISCHARGE TOWARD OR WITHIN THE RIGHT OF WAY. DRAINAGE CHANNELS OR DITCHES MUST BE ADEQUATELY PROTECTED FROM EROSION AND PROVIDE A MINIMUM OF 48" OF COVER OVER THE PIPELINES. ALTERING (CLEARING, RE-GRADING, OR CHANGING ALIGNMENT OF) AN EXISTING DRAINAGE CHANNEL OR DITCH REQUIRES WRITTEN APPROVAL FROM WILLIAMS.
2. IMPOUNDMENT OF WATER ON WILLIAMS RIGHT OF WAY IS NOT PERMITTED. SOIL EROSION CONTROL MEASURES WILL NOT BE INSTALLED WITHIN THE WILLIAMS RIGHT OF WAY WITHOUT PRIOR WRITTEN WILLIAMS APPROVAL.

#### STATEMENT REGARDING RIGHTS:

1. NOTHING CONTAINED HEREIN WILL BE CONSTRUED TO CONVEY, WAIVE, OR SUBORDINATE ANY OF WILLIAMS EXISTING RIGHTS WHATSOEVER.
2. WILLIAMS WILL BE FULLY AND COMPLETELY COMPENSATED FOR ANY DAMAGES TO ITS FACILITIES RESULTING FROM THE ACTS OF THIRD PARTIES WHO ARE WORKING IN THE VICINITY OF WILLIAMS FACILITIES WITH OR WITHOUT WILLIAMS CONSENT.
3. WILLIAMS WILL BE INDEMNIFIED FROM AND AGAINST ALL CLAIMS, LOSSES, DEMANDS, DAMAGES, CAUSES OF ACTION, SUITS, AND LIABILITY OF EVERY TYPE AND CHARACTER, INCLUDING ALL EXPENSES OF LITIGATION, COURT COSTS, AND ATTORNEY'S FEES, FOR INJURY TO OR DEATH OF ANY PERSON, OR FOR DAMAGE TO ANY PROPERTY, ARISING OUT OF OR IN CONNECTION WITH THIRD PARTY WORK IN THE VICINITY OF WILLIAMS FACILITIES.

UTILITIES BY OTHERS PLANS PREPARED BY:  
**DAVIS • MARTIN • POWELL**  
 ENGINEERS & SURVEYORS   
 6415 OLD PLANK RD. HIGH POINT, NC 27265  
 PHONE: (336)886-4821 FAX: (336)886-4458  
 WWW.DMP-INC.COM LICENSE: F-0245

5/14/99

**DUKE ENERGY NOTES**  
 1. ALL POLE AND AERIAL LINE REMOVALS/RELOCATIONS, EXCEPT FOR POLES P8 AND P10, ARE REQUIRED TO BE COMPLETED BY THE DATE OF AVAILABILITY.  
 2. DUE TO GRADING CONCERNS, DUKE ENERGY WILL NEED TO WORK WITH THE NCDOT CONTRACTOR. CONTRACTOR TO PERFORM GRADING FOR DUKE ENERGY AT POLES P8 AND P10.  
 3. POLES P2, P4, P5, AND P6 ARE TO BE REMOVED BY DUKE ENERGY.

**-DETOUR-**

NAD 83 NA 2011

**UTILITIES BY OTHERS**

**NOTE:**  
 ALL UTILITY WORK SHOWN ON THIS SHEET WILL BE DONE BY OTHERS. NO PAYMENT WILL BE MADE TO THE CONTRACTOR FOR UTILITY WORK SHOWN ON THIS SHEET.

PROP. TEMPORARY AT&T TELEPHONE LINE TO BE LAID UPON GROUND

PROP. TEMPORARY AT&T O/H TELE. LINE

PROP. TEMPORARY AT&T TELE. POLE

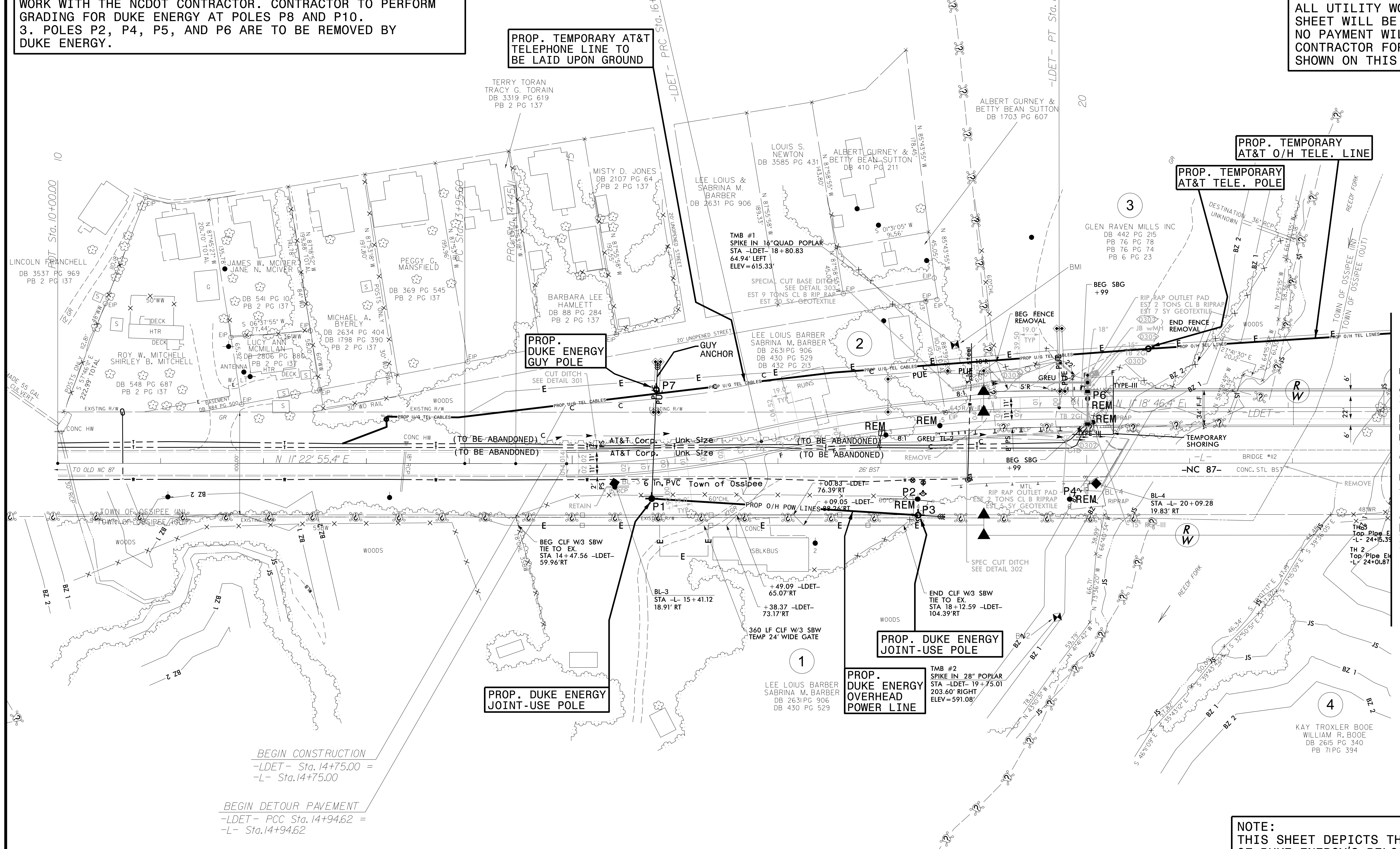
PROP. DUKE ENERGY GUY POLE

GUY ANCHOR

PROP. DUKE ENERGY JOINT-USE POLE

PROP. DUKE ENERGY OVERHEAD POWER LINE

PROP. DUKE ENERGY JOINT-USE POLE



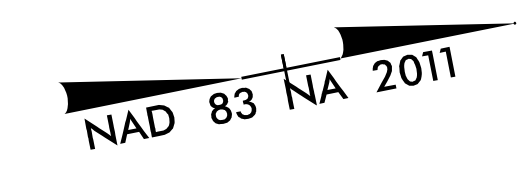
BEGIN CONSTRUCTION  
 -LDET- Sta. 14+75.00 =  
 -L- Sta. 14+75.00

BEGIN DETOUR PAVEMENT  
 -LDET- PCC Sta. 14+94.62 =  
 -L- Sta. 14+94.62

PI Sta 15+90.47 Δ = 12° 52' 06.7" (LT) D = 6' 44' 26.4" L = 190.91' T = 95.86' R = 850.00' DS = 40 mph	PI Sta 18+32.13 Δ = 12° 52' 06.6" (RT) D = 4' 24' 26.5" L = 291.98' T = 146.61' R = 1,300.00' DS = 40 mph e = 0.04 Ro = 76.00'	PI Sta 25+79.59 Δ = 12° 59' 48.5" (RT) D = 4' 24' 26.5" L = 294.89' T = 148.08' R = 1,300.00' DS = 40 mph e = 0.04 Ro = 76.00'	PI Sta 28+26.12 Δ = 13° 22' 56.0" (LT) D = 6' 44' 26.4" L = 198.53' T = 99.72' R = 850.00'
--	--	--	---

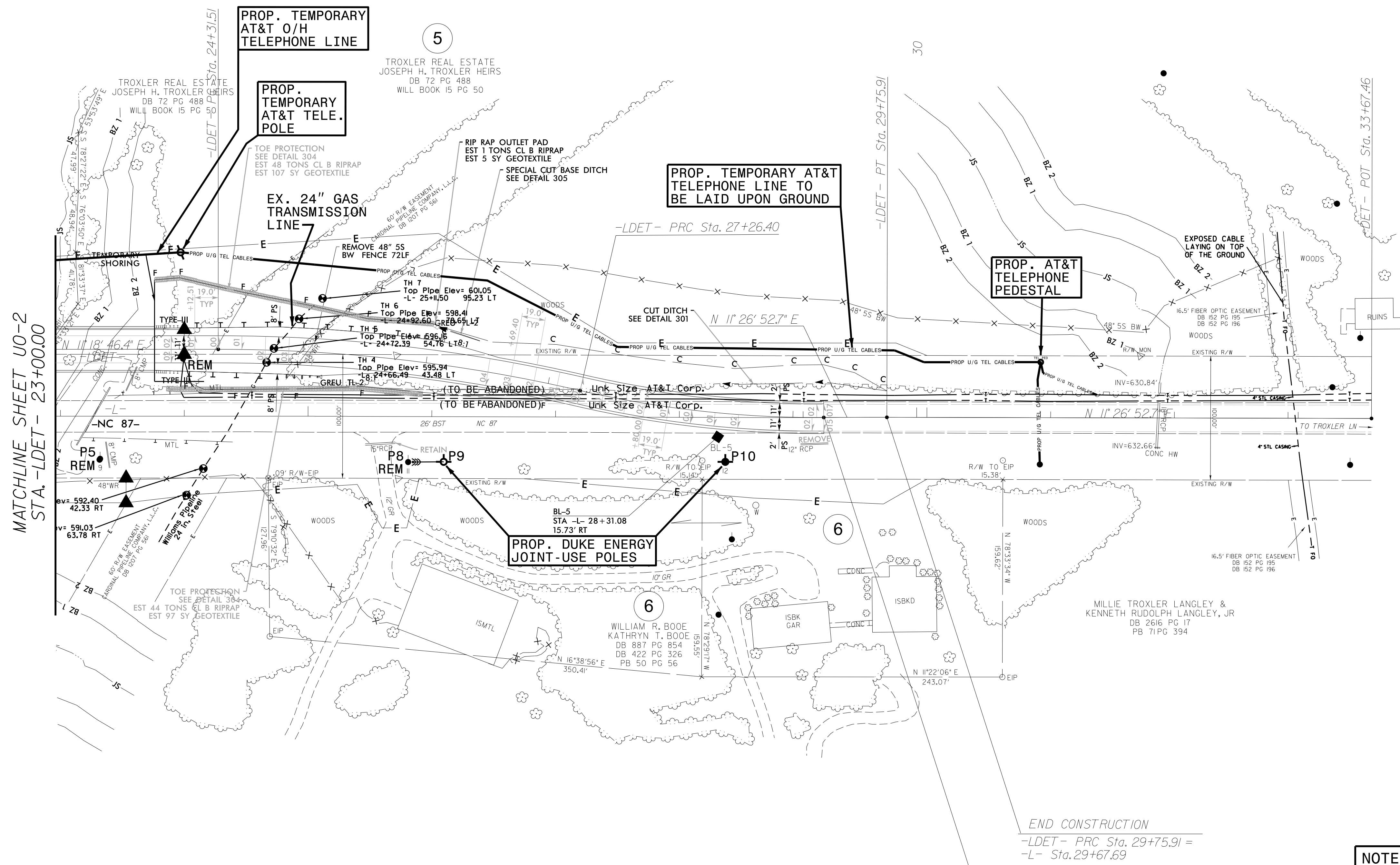
**NOTE:**  
 THIS SHEET DEPICTS THE FIRST STAGE OF DUKE ENERGY'S RELOCATION PLAN, INCLUDING EXISTING FACILITIES TO BE REMOVED AND PROPOSED FACILITIES TO BE INSTALLED PRIOR TO THE BEGINNING OF THE ROADWAY PROJECT.

**-DETOUR-**



**UTILITIES BY OTHERS**

**NOTE:**  
ALL UTILITY WORK SHOWN ON THIS SHEET WILL BE DONE BY OTHERS. NO PAYMENT WILL BE MADE TO THE CONTRACTOR FOR UTILITY WORK SHOWN ON THIS SHEET.



**DUKE ENERGY NOTES**

1. ALL POLE AND AERIAL LINE REMOVALS/RELOCATIONS, EXCEPT FOR POLES P8 AND P10, ARE REQUIRED TO BE COMPLETED BY THE DATE OF AVAILABILITY.
2. DUE TO GRADING CONCERNS, DUKE ENERGY WILL NEED TO WORK WITH THE NCDOT CONTRACTOR. CONTRACTOR TO PERFORM GRADING FOR DUKE ENERGY AT POLES P8 AND P10.
3. POLES P2, P4, P5, AND P6 ARE TO BE REMOVED BY DUKE ENERGY.

**END CONSTRUCTION**  
-LDET- PRC Sta. 29+75.91 =  
-L- Sta. 29+67.69

**END DETOUR PAVEMENT**  
-LDET- PRC Sta. 29+24.93 =  
-L- Sta. 29+16.71

**NOTE:**  
THIS SHEET DEPICTS THE FIRST STAGE OF DUKE ENERGY'S RELOCATION PLAN, INCLUDING EXISTING FACILITIES TO BE REMOVED AND PROPOSED FACILITIES TO BE INSTALLED PRIOR TO THE BEGINNING OF THE ROADWAY PROJECT.

5/14/99



