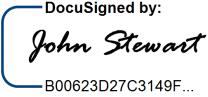




August 23, 2016

MEMORANDUM TO: Gordon Box, L.G.
GeoEnvironmental Project Manager
GeoEnvironmental Section
Geotechnical Engineering Unit

FROM: John Stewart, L.G. 
ECS Chief Geologist

TIP NO: B-5728
WBS: 45684.1.1
COUNTY: Alamance
DIVISION 7
DESCRIPTION: Replace Bridge No. 112 on NC 87 over Reedy Fork Creek

SUBJECT: **GeoEnvironmental Report for Planning**

ECS Carolinas, LLP (ECS) has completed the GeoEnvironmental Report for Planning. This report has the following components and is transmitted as:

X Hazardous Materials Report (5) pages

Please contact me if you have any questions concerning this project.

Hazardous Materials Report

ECS has investigated the above referenced project to identify hazardous material sites for inclusion in the environmental document.

HAZARDOUS MATERIALS EVALUATION

Purpose

This section presents the results of a hazardous material evaluation conducted along the above referenced project. The main purpose of this investigation is to identify properties within the project study area that are or may be contaminated and therefore result in increased project costs and future liability if acquired by the Department. Hazardous material impacts may include, but are not limited to, active and abandoned underground storage tank (UST) sites, hazardous waste sites, regulated landfills and unregulated dumpsites.

Techniques/Methodologies

ECS personnel conducted a field reconnaissance along the above mentioned project on 8/12/2016. A search of appropriate environmental agencies' databases using and historical aerial photographs provided by EDR was performed to assist in evaluating sites identified during this study.

Findings

UST Facilities

Based on our study, one (1) site may contain petroleum USTs within the project limits.

Hazardous Waste Sites

No Hazardous Waste Site was identified within the project limits.

Landfills

No apparent landfills were identified within the project limits.

Other GeoEnvironmental Concerns

Based on our study, one (1) site may contain petroleum or solvent impacts within the project limits.

Anticipated Impacts

One (1) possible UST facility and one (1) automobile garage were identified within the proposed project limits. We anticipate low monetary and scheduling impacts resulting from these sites. (See the following table and appendices for details)

Known and Potential Hazardous Material Sites

1)	Property Name	Property Owner:
	Abandoned Automobile Repair Facility 2551 N. NC Highway 87 Elon, NC 27244	Lee & Sabrina Barber 2568 Bridgeview Drive Elon, NC 27244



This abandoned automobile repair facility is located on southeast quadrant of the intersection of NC 87 and the bridge. This parcel does not appear on the UST Section Registry nor are any incidents associated with this location. There is no evidence of USTs or UST removals. **This site is anticipated to present low geoenvironmental impacts to the project.**

2)	Property Name Glen Raven Mills 2564 N. NC 87 Highway Ossipee, NC 27244 Facility ID #: 0-022985 Incident #: 6241	Property Owner: Glen Raven Mills, Inc. 1831 N. Park Avenue Burlington, NC 27217 UST Owner: Glen Raven Mills, Inc. 1831 N. Park Avenue Burlington, NC 27217
----	---	---



This gravel lot (formerly Glen Raven Mills) is located on the southwest quadrant of the NC 87 and the bridge. According to the UST Section Registry there are no tanks currently in use. Three (3) tanks were removed in 1990. Incident 6241 was assigned to this facility in 1990. The incident was closed out in 2001. **This site is anticipated to present low geoenvironmental impacts to the project**

Please note that discovery of additional sites not recorded by regulatory agencies and not reasonably discernible during the project reconnaissance may occur. The GeoEnvironmental Section should be notified immediately after discovery of such sites so their potential impact(s) may be assessed.

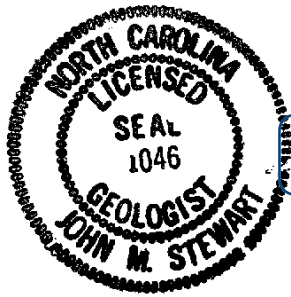
If there are questions regarding the geoenvironmental issues, please contact John Stewart, at 336-856-7150.

DocuSigned by:

Ashley Barham

C13569865EFF473...

Ashley Barham
Project Scientist



DocuSigned by:

John Stewart

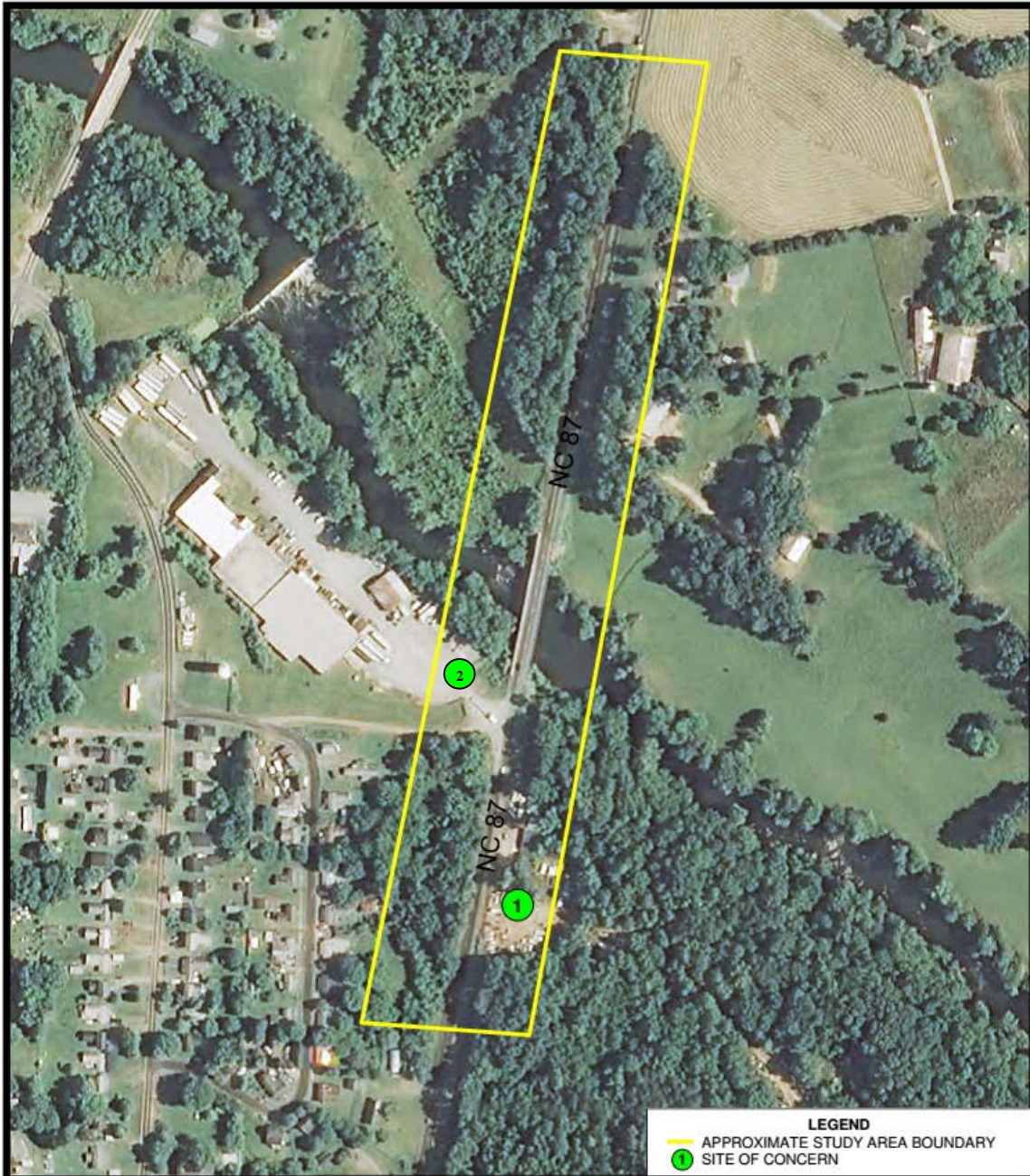
B00623D27C3149F...

John Stewart, LG
Chief Geologist


Not considered Final unless all signatures are completed


SITE LOCATION MAP





LEGEND
— APPROXIMATE STUDY AREA BOUNDARY
① SITE OF CONCERN

SOURCE: 
ENVIRONMENTAL DATA RESOURCES

 = 500'



APPENDIX A
LOCATION OF GEOENVIRONMENTAL SITES OF CONCERN
REPLACE BRIDGE NO. 112 AT NC 87 OVER REEDY FORK CREEK
WBS #45684.1.1
T.I.P. #: B-5728

TIP: B-5728

Site Photographs

8/12/16



Bridge No. 112 on NC 87 over Reedy Fork Creek. View northward.

Bridge No. 112 on NC 87 over Reedy Fork Creek. View southward.



Bridge No. 112 on NC 87 over Reedy Fork Creek. Downstream view eastward from the bridge deck.

Bridge No. 112 on NC 87 over Reedy Fork Creek. Upstream view westward from the bridge deck.