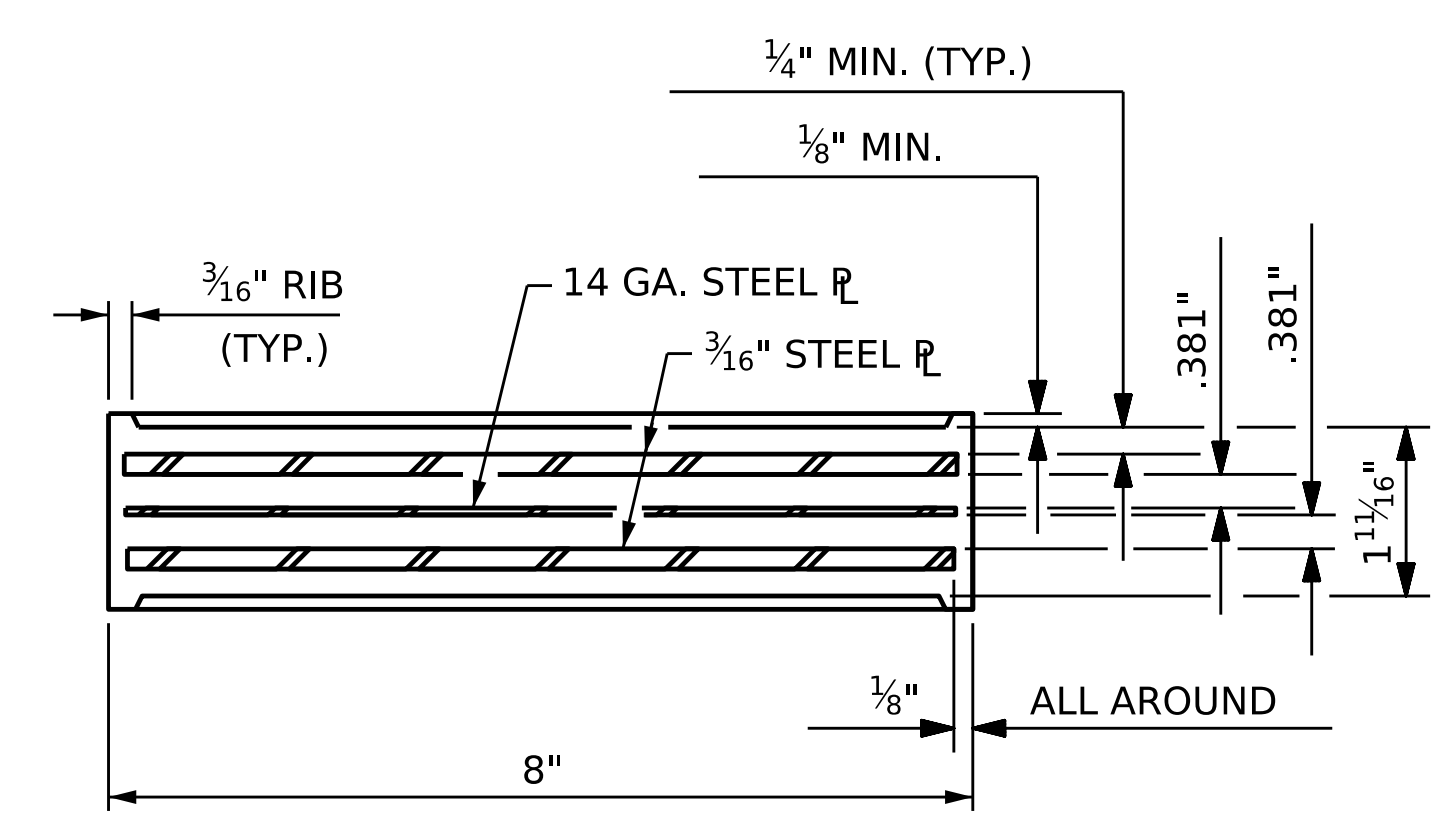
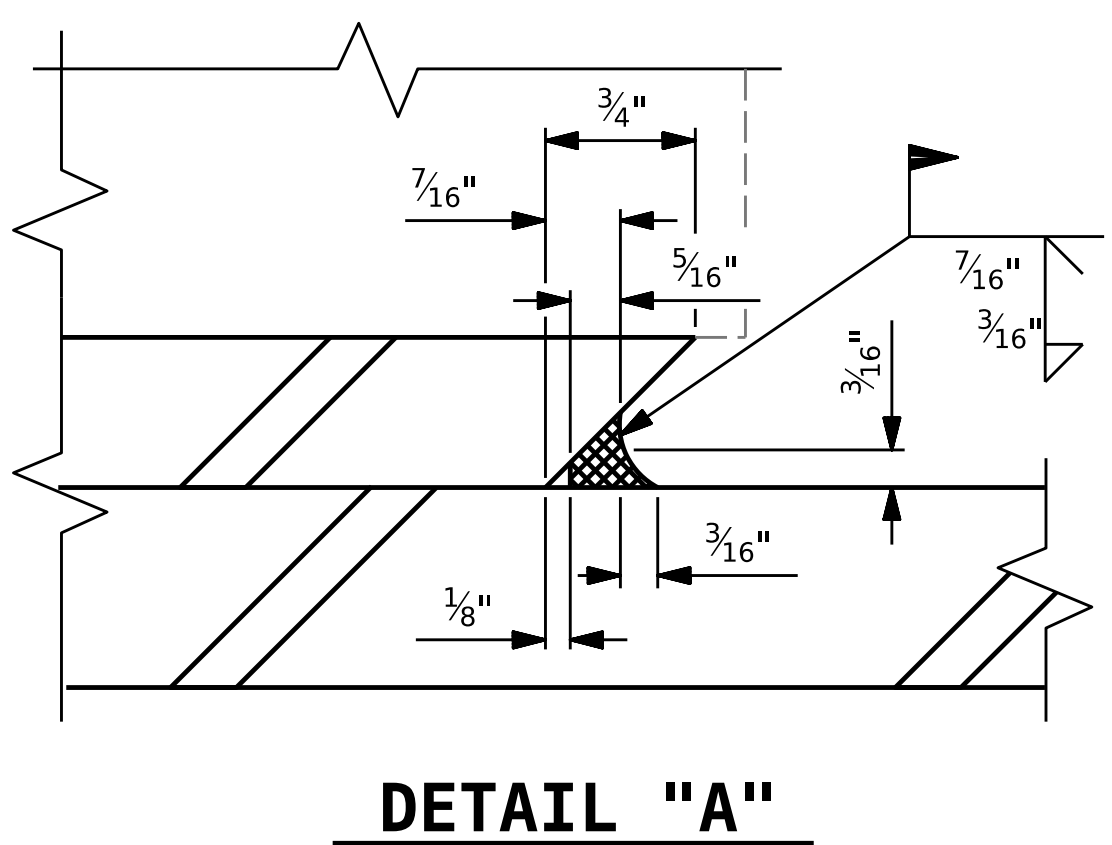


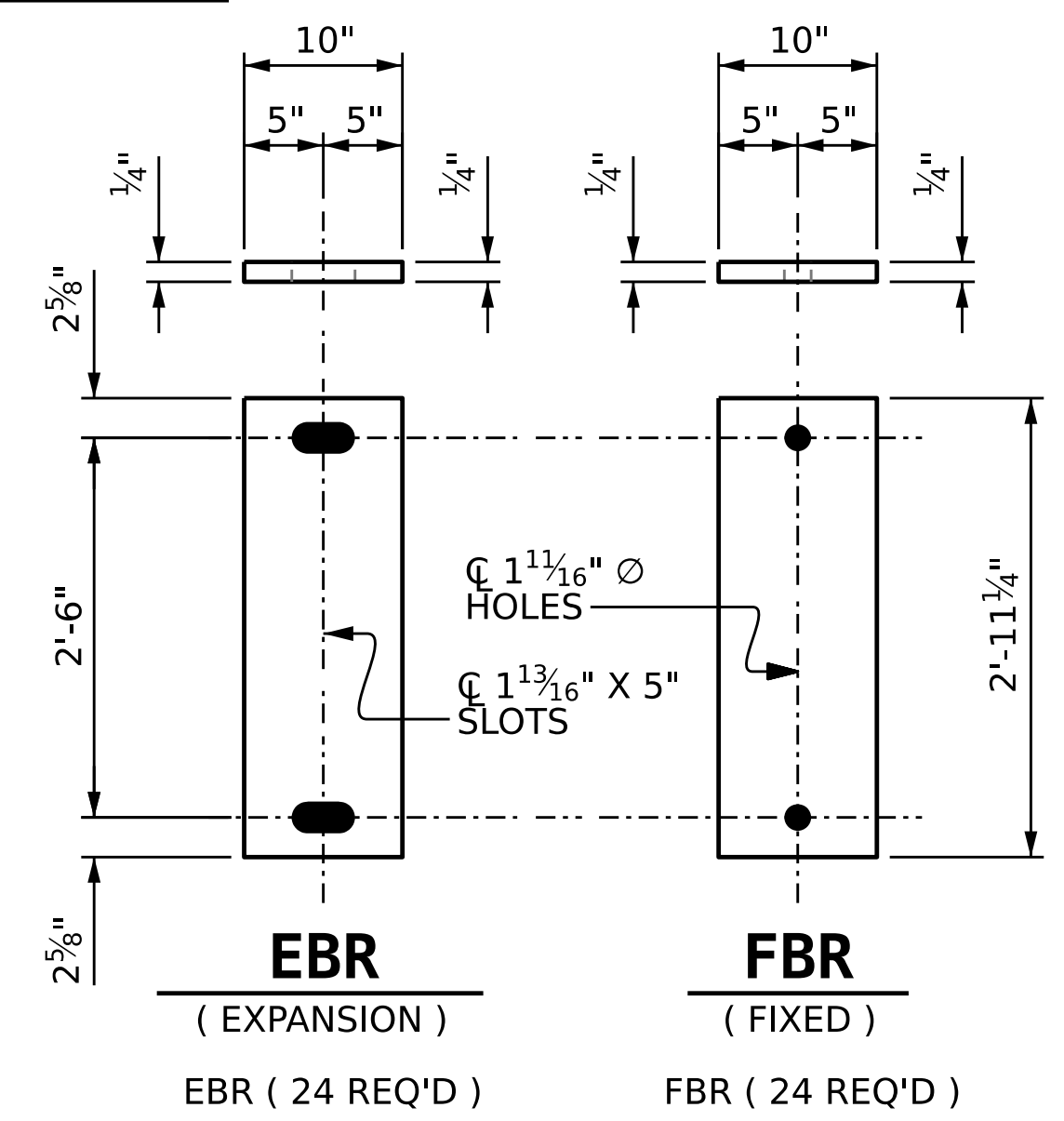
MAXIMUM ALLOWABLE SERVICE LOADS	
D.L. + L.L. (NO IMPACT)	
TYPE II	145 K
TYPE III	205 K
TYPE IV	225 K



TYPICAL SECTION OF ELASTOMERIC BEARINGS



DETAIL "A"



SOLE PLATE DETAILS ("P")

**NOTES**

AFTER REMOVING EXISTING BEARING PLATES, CUTOFF EXISTING ANCHOR BOLTS FLUSH WITH THE TOP OF THE CAP AND COAT AREA ABOVE CUTOFF WITH EPOXY COATING.

AT ALL FIXED POINTS OF SUPPORT, NUTS FOR ANCHOR RODS ARE TO BE TIGHTENED FINGER TIGHT AND THEN BACKED OFF 1/2 TURN. THE THREAD OF THE NUT AND BOLT SHALL THEN BE BURRED WITH A SHARP POINTED TOOL.

THE 2" O PIPE SLEEVE SHALL BE CUT FROM SCHEDULE 40 PVC PLASTIC PIPE. THE PVC PLASTIC PIPE SHALL MEET THE REQUIREMENTS OF ASTM D1785.

STEEL SOLE PLATES, ANCHOR BOLTS, NUTS, AND WASHERS SHALL BE GALVANIZED IN ACCORDANCE WITH THE STANDARD SPECIFICATIONS.

PRIOR TO WELDING, GRIND THE GALVANIZED SURFACE OF THE PORTION OF THE EMBEDDED PLATE AND SOLE PLATE THAT ARE TO BE WELDED. AFTER WELDING, DAMAGED GALVANIZED SURFACES SHALL BE REPAIRED IN ACCORDANCE WITH THE STANDARD SPECIFICATIONS.

WHEN WELDING THE SOLE PLATE TO THE EMBEDDED PLATE IN THE GIRDER, USE TEMPERATURE INDICATING WAX PENS, OR OTHER SUITABLE MEANS, TO ENSURE THAT THE TEMPERATURE OF THE SOLE PLATE DOES NOT EXCEED 300° F. TEMPERATURES ABOVE THIS MAY DAMAGE THE ELASTOMER.

SOLE PLATE "P", BOLTS, NUTS, WASHERS, AND PIPE SLEEVE SHALL BE INCLUDED IN THE PAY ITEM FOR BEARING REPLACEMENT.

FULLY THREADED ANCHOR RODS SHALL MEET THE REQUIREMENTS OF ASTM A449. NUTS SHALL MEET THE REQUIREMENTS OF AASHTO M291-DH OR AASHTO M292-2H. WASHERS SHALL MEET THE REQUIREMENTS OF AASHTO M293. SHOP DRAWINGS ARE REQUIRED FOR ANCHOR RODS, NUTS AND WASHERS. SHOP INSPECTION IS REQUIRED.

SUBMIT SELECTED ADHESIVELY ANCHOR ROD SYSTEM MANUFACTURER'S INFORMATION WITH SHOP DRAWINGS AS PER THE WORKING DRAWING SUBMITAL SPECIAL PROVISION.

CONTRACTOR SHALL FIELD VERIFY PROPOSED REPLACEMENT BEARING SYSTEM WILL WORK PRIOR TO ORDERING MATERIALS.

ALL SURFACES OF BEARING PLATES SHALL BE SMOOTH AND STRAIGHT.

THE ELASTOMER IN THE STEEL REINFORCED BEARINGS SHALL HAVE A SHEAR MODULUS OF 0.160 KSI, IN ACCORDANCE WITH AASHTO M251.

FOR STEEL REINFORCED ELASTOMERIC BEARINGS, SEE SPECIAL PROVISIONS.

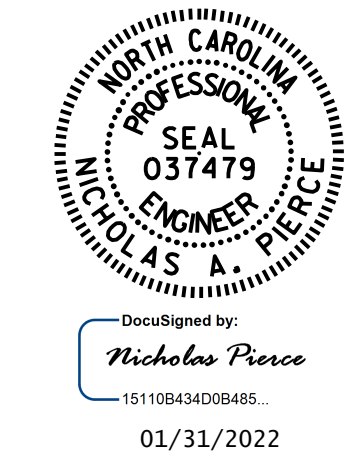
ALL SOLE PLATES SHALL BE AASHTO M270 GRADE 36.

LEVEL ONE FIELD TESTING IS REQUIRED FOR ADHESIVELY ANCHORED BOLTS. THE REQUIRED PULLOUT STRENGTH IS 5 KIPS FOR THE SPECIFIED EMBEDMENT LENGTH.

SEE SPECIAL PROVISIONS FOR BRIDGE JACKING.

FOR BEARING REPLACEMENT LOCATIONS, SEE DECK UNDERSIDE REPAIR SHEETS.

PROJECT NO. **15BPR.49**  
**WAKE** COUNTY  
 BRIDGE NO. **910240**



STATE OF NORTH CAROLINA  
 DEPARTMENT OF TRANSPORTATION  
 RALEIGH  
 STANDARD  
**BEARING REPLACEMENT**

ASSEMBLED BY: N.A. PIERCE DATE: 4/2019  
 CHECKED BY: D.A. CANTRELL DATE: 5/2019  
 DRAWN BY:  
 CHECKED BY:

REVISIONS						SHEET NO. S2-20
NO.	BY:	DATE:	NO.	BY:	DATE:	
1			3			TOTAL SHEETS 74
2			4			

DOCUMENT NOT CONSIDERED FINAL UNLESS ALL SIGNATURES COMPLETED