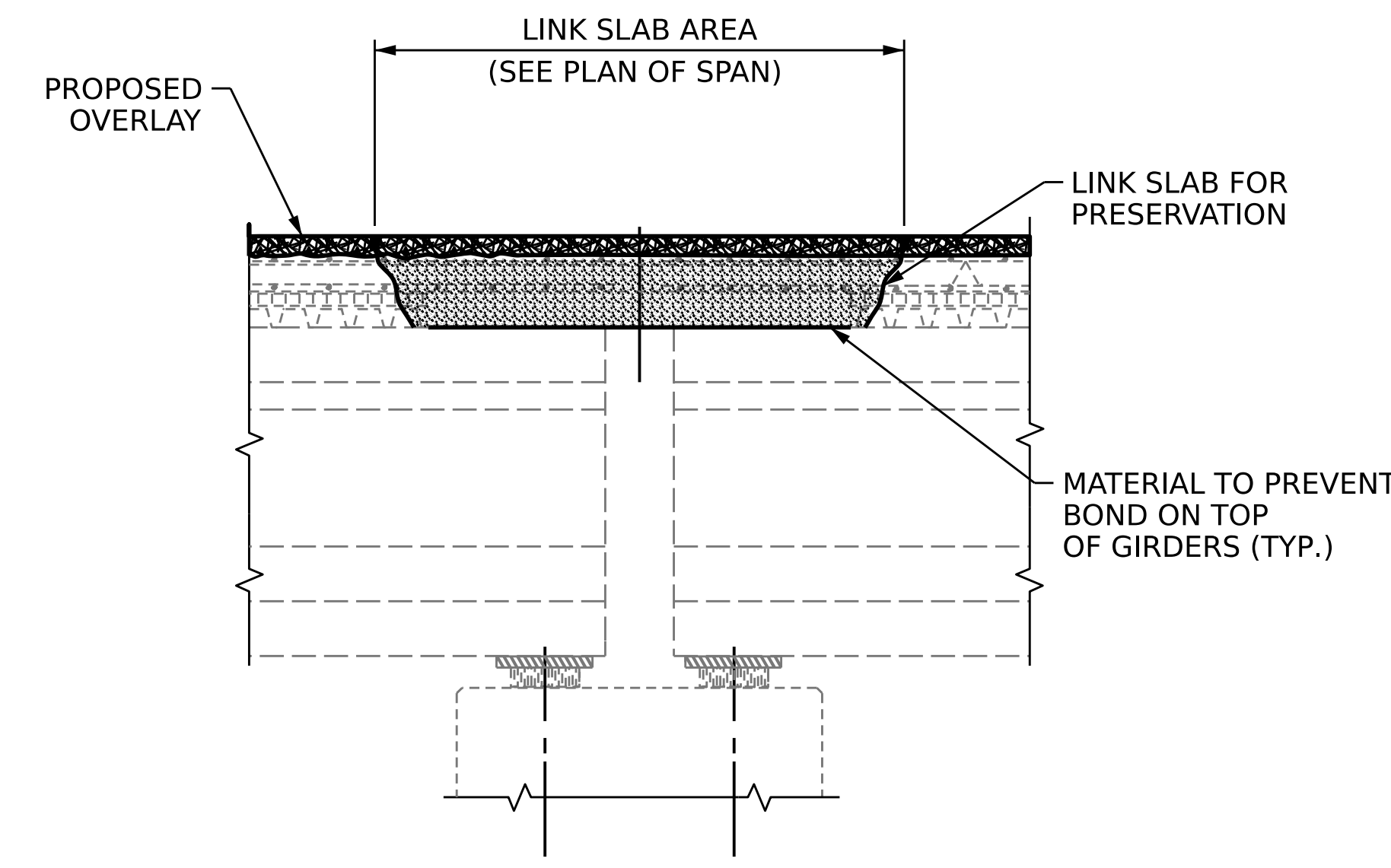
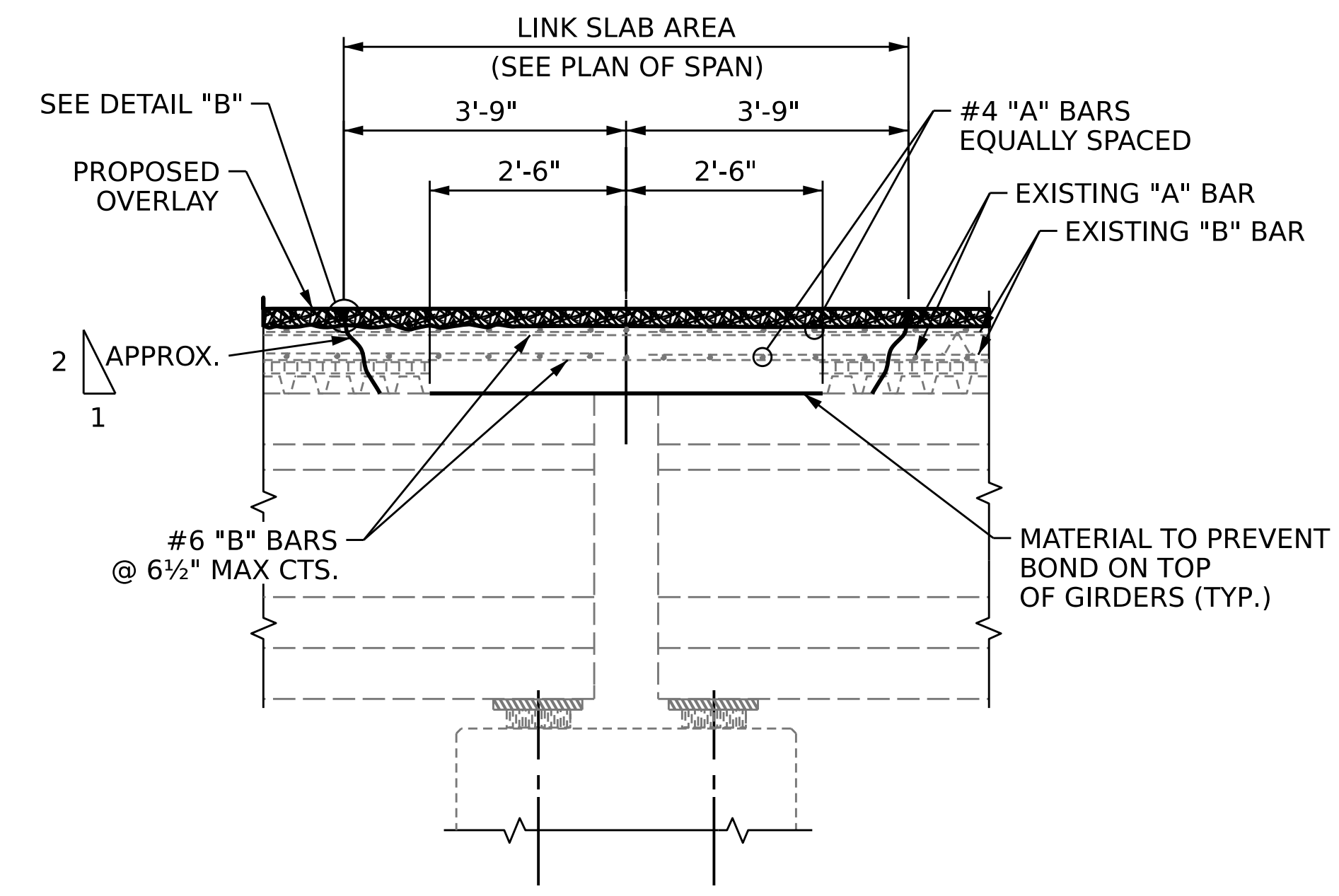
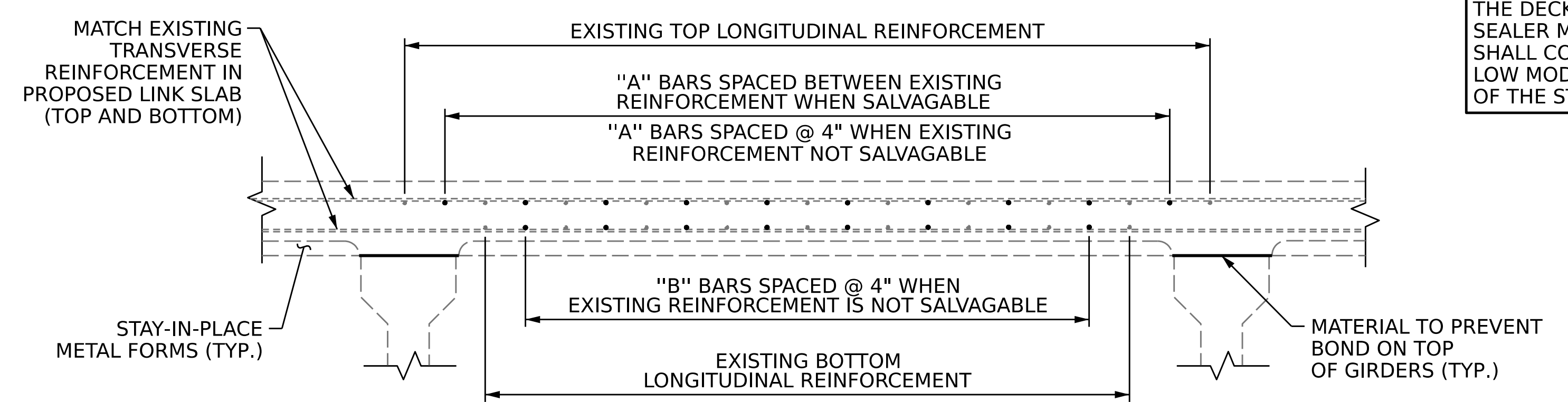
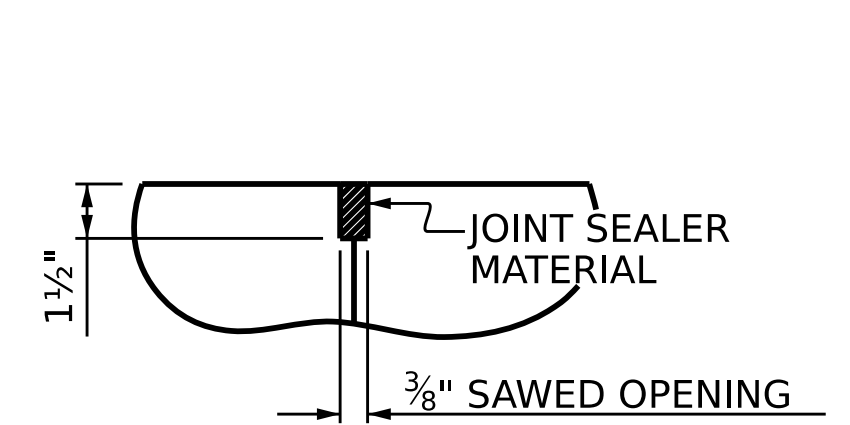


**EXISTING SECTION AT BENT**  
SECTION B-B



**PROPOSED SECTION AT BENT**  
SECTION B-B



**REINFORCEMENT DETAILS**

A 1 1/2" DEEP CONTRACTION JOINT AT BENT CONTROL LINE SHALL BE SAWN WITHIN 24 HOURS OF POURING THE DECK. THE JOINT SHALL BE FILLED WITH JOINT SEALER MATERIAL. THE JOINT SEALER MATERIAL SHALL CONFORM TO THE REQUIREMENTS OF TYPE B LOW MODULUS SILICONE SEALANT. SEE SECTION 1028 OF THE STANDARD SPECIFICATIONS.

SPlice LENGTHS				
BAR SIZE	EPOXY COATED	UNCOATED		
#4	2'-0"	1'-9"		
#5	2'-6"	2'-2"		
#6	3'-0"	2'-7"		

BILL OF MATERIAL					
FOR ONE LINK SLAB (4 REQ'D)					
BAR	NO.	SIZE	TYPE	LENGTH	WEIGHT
* A	15	#5	STR	24'-0"	376 LBS.
A	15	#5	STR	24'-0"	376 LBS.
* B	46	#6	STR	7'-6"	519 LBS.
B	46	#6	STR	7'-6"	519 LBS.
REINFORCING STEEL					895 LBS.
* EPOXY COATED REINFORCING STEEL					895 LBS.

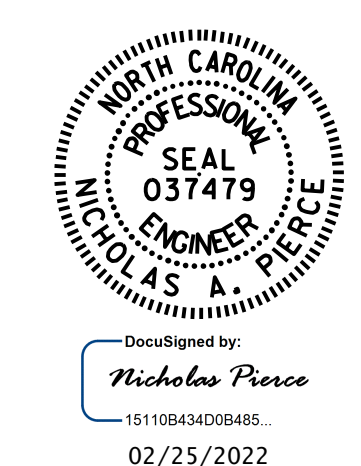
**NOTES**

- SEE TRAFFIC MANAGEMENT PLANS FOR LANE WIDTHS, SEQUENCING, AND OTHER TRAFFIC CONTROL MEASURES FOR STAGING OF JOINT REPAIR.
- FOR ESTIMATED LINK SLAB FOR PRESERVATION QUANTITIES, SEE PLAN OF SPAN SHEETS.
- FOR LINK SLAB FOR PRESERVATION, SEE SPECIAL PROVISIONS.

**CONSTRUCTION SEQUENCE**

- CLOSE WORK AREA ACCORDING TO TRAFFIC MANAGEMENT PLANS.
- MARK OUT PROPOSED LINK SLAB AREA AND REMOVE EXISTING JOINT MATERIAL.
- SAW CUT 1/2" DEEP PERIMETER OF PROPOSED LINK SLAB AREA.
- BEGIN FULL DEPTH DEMOLITION OF PROPOSED LINK SLAB AREA, BEING CAREFUL NOT TO DAMAGE EXISTING REINFORCING STEEL, BEAM FLANGES, OR STAY-IN-PLACE FORMS. DEMOLISH EDGES OF LINK SLAB AREA AT A 2:1 RATIO, AS SHOWN.
- REMOVE DEMILITIONED MATERIALS AND CLEAN LINK SLAB AREA.
- REMOVE SHEAR STUDS/STIRRUPS WITHIN THE 0.05L AREA.
- COAT AND/OR REPAIR EXISTING REINFORCING STEEL THAT WAS DAMAGED DURING DEMOLITION.
- PLACE BOND BREAKER MATERIAL WITHIN THE 0.05L AREA.
- PLACE ADDITIONAL REINFORCING STEEL AS SHOWN.
- PLACE NEW CONCRETE FOLLOWING THE CONCRETE WORK FOR JOINT REPLACEMENT SPECIAL PROVISION. AS AN ALTERNATIVE, THE CONTRACTOR CAN USE PC MATERIAL FOR THE LINK SLAB, FOLLOWING THE POLYMER CONCRETE BRIDGE DECK OVERLAY SPECIAL PROVISION.
- AFTER PROPOSED DECK OVERLAY WORK HAS CURED, SAW CUT CONTROL LINES AND FILL WITH SEALER MATERIAL.

PROJECT NO. **15BPR.49**  
WAKE COUNTY  
BRIDGE NO. **910240**



STATE OF NORTH CAROLINA  
DEPARTMENT OF TRANSPORTATION  
RALEIGH  
**LINK SLAB FOR PRESERVATION JOINT DETAILS**

DRAWN BY : N.A. PIERCE DATE : 8/2018  
CHECKED BY : D.A. CANTRELL DATE : 11/2021  
DESIGN ENGINEER OF RECORD : N.A. PIERCE DATE : 11/2021

REVISED CALL OUT AND NOTES 02/25/22

REVISIONS					SHEET NO.
NO.	BY:	DATE:	NO.	BY:	DATE:
1	NAP	02/25/22	3		
2			4		

DOCUMENT NOT CONSIDERED FINAL UNLESS ALL SIGNATURES COMPLETED

SHEET NO. S2-11  
TOTAL SHEETS 73