

GEOTECHNICAL ENGINEER

ENGINEER

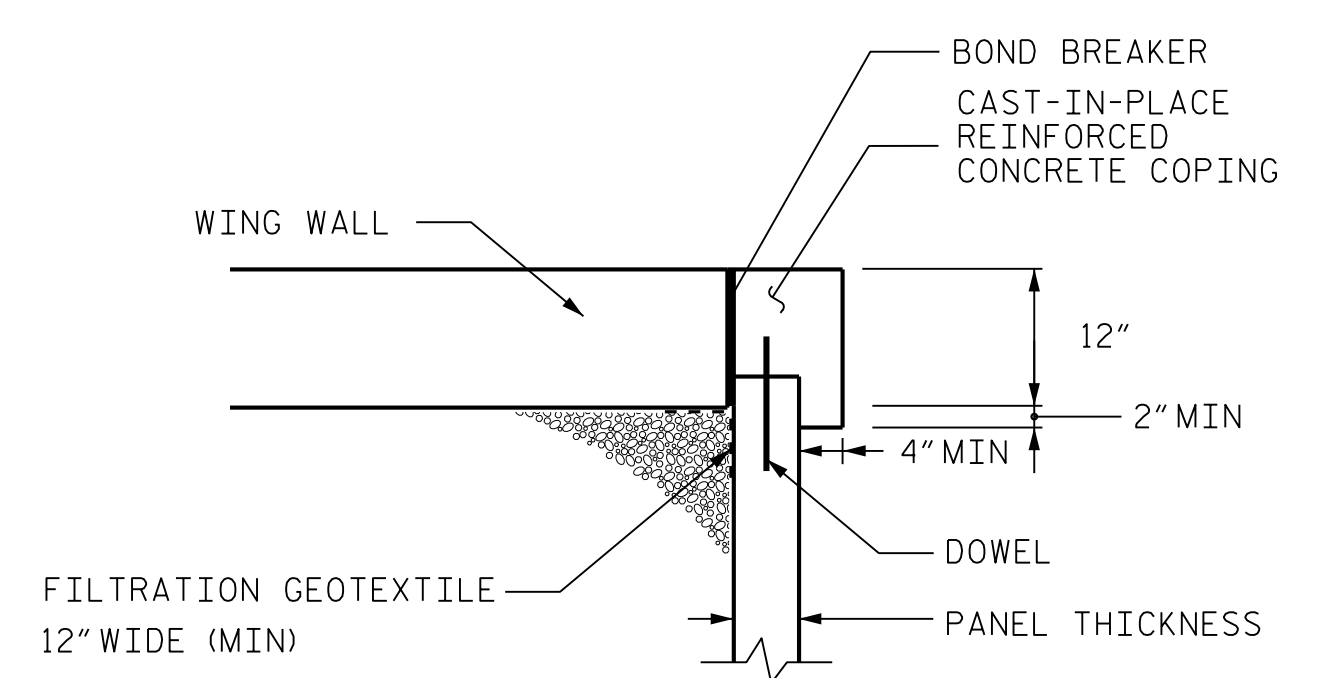
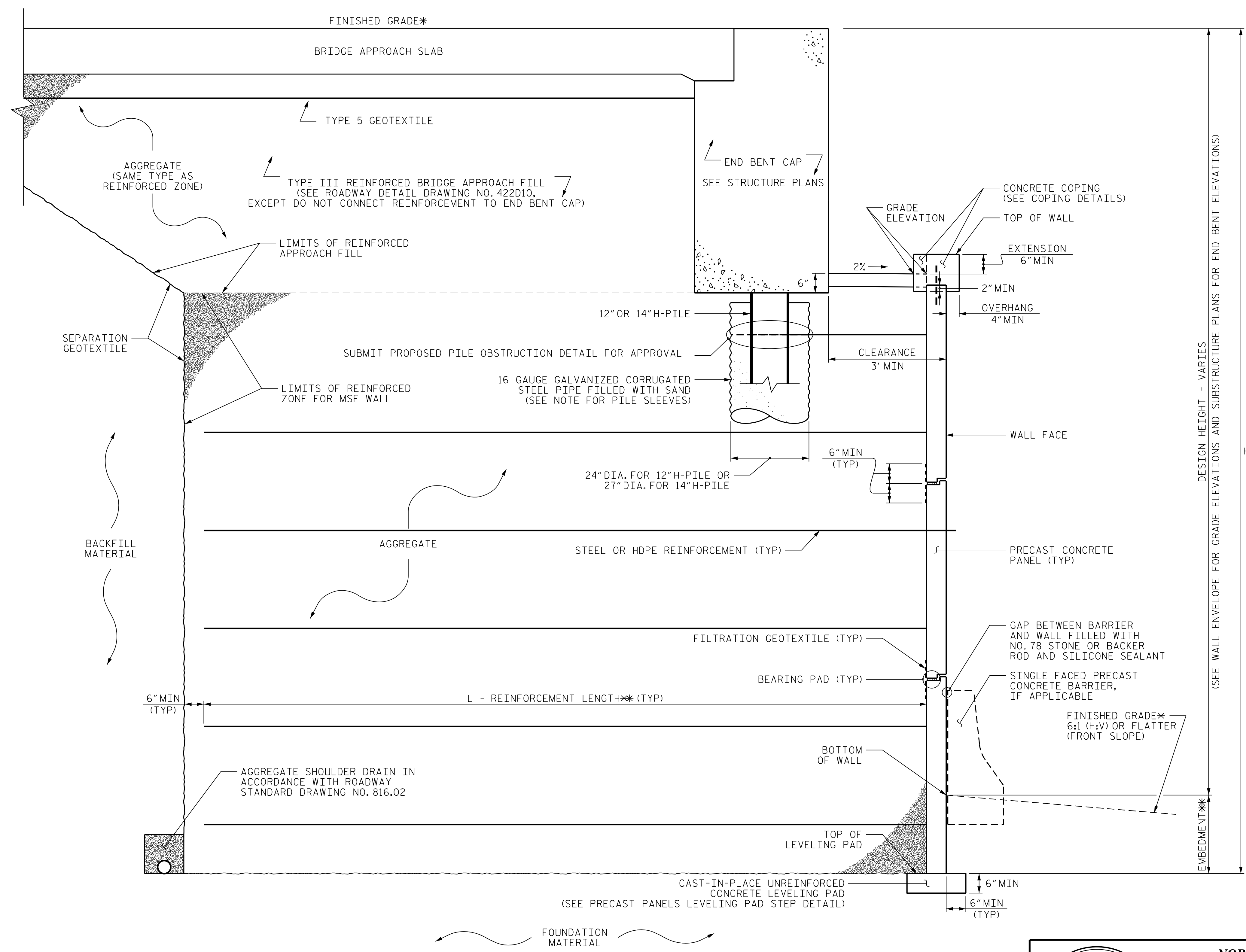
SEAL 028669

DESIGNED BY: Scott Webb 01/20/2022

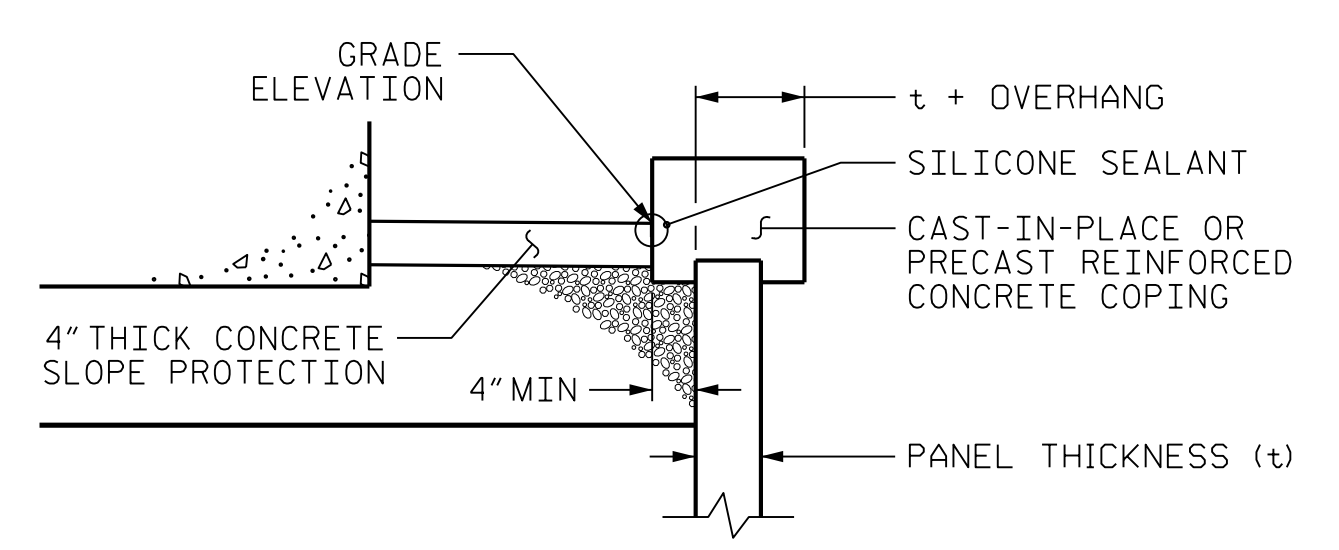
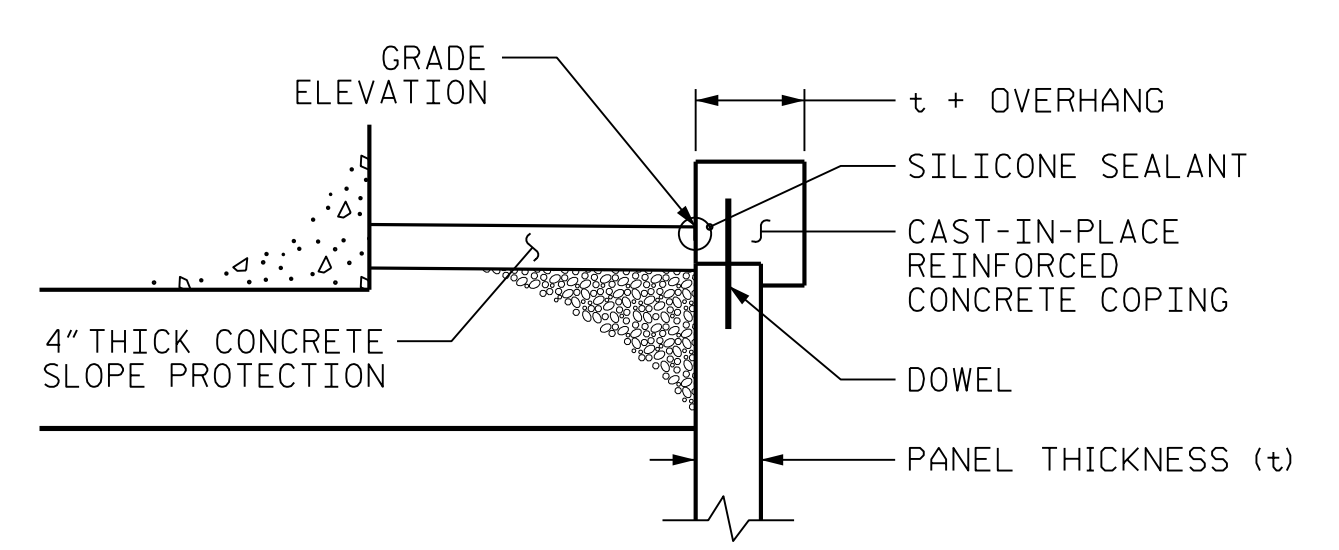
DATE: 01/20/2022

SIGNATURE: DATE:

DOCUMENT NOT CONSIDERED FINAL UNLESS ALL SIGNATURES COMPLETED



VERTICAL COPING SECTION C-C



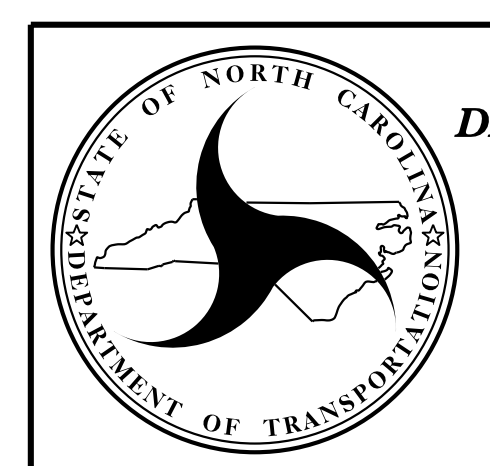
COPING DETAILS

AT THE CONTRACTOR'S OPTION, CONNECT COPING TO PANELS WITH DOWELS OR EXTEND COPING DOWN BACK OF PANELS.

MSE ABUTMENT WALL WITH PRECAST PANELS - TYPICAL SECTION

\*SEE ROADWAY PLANS FOR FINISHED GRADE DETAILS.  
 \*\*SEE MSE RETAINING WALLS PROVISION AND IF APPLICABLE, MSE WALL NOTES FOR EMBEDMENT AND REINFORCEMENT LENGTH REQUIREMENTS.

PREPARED BY: R. WEBB	DATE: 1-22
REVIEWED BY: D. TEAGUE	DATE: 1-22



NORTH CAROLINA  
 DEPARTMENT OF TRANSPORTATION  
 DIVISION OF HIGHWAYS

GEOTECHNICAL  
 ENGINEERING UNIT

PROJECT NO.: B-5737

ROCKINGHAM COUNTY

STATION: \_\_\_\_\_

SHEET 4 OF 4

REVISIONS						SHEET NO. W4
NO.	BY	DATE	NO.	BY	DATE	
1			3			
2			4			