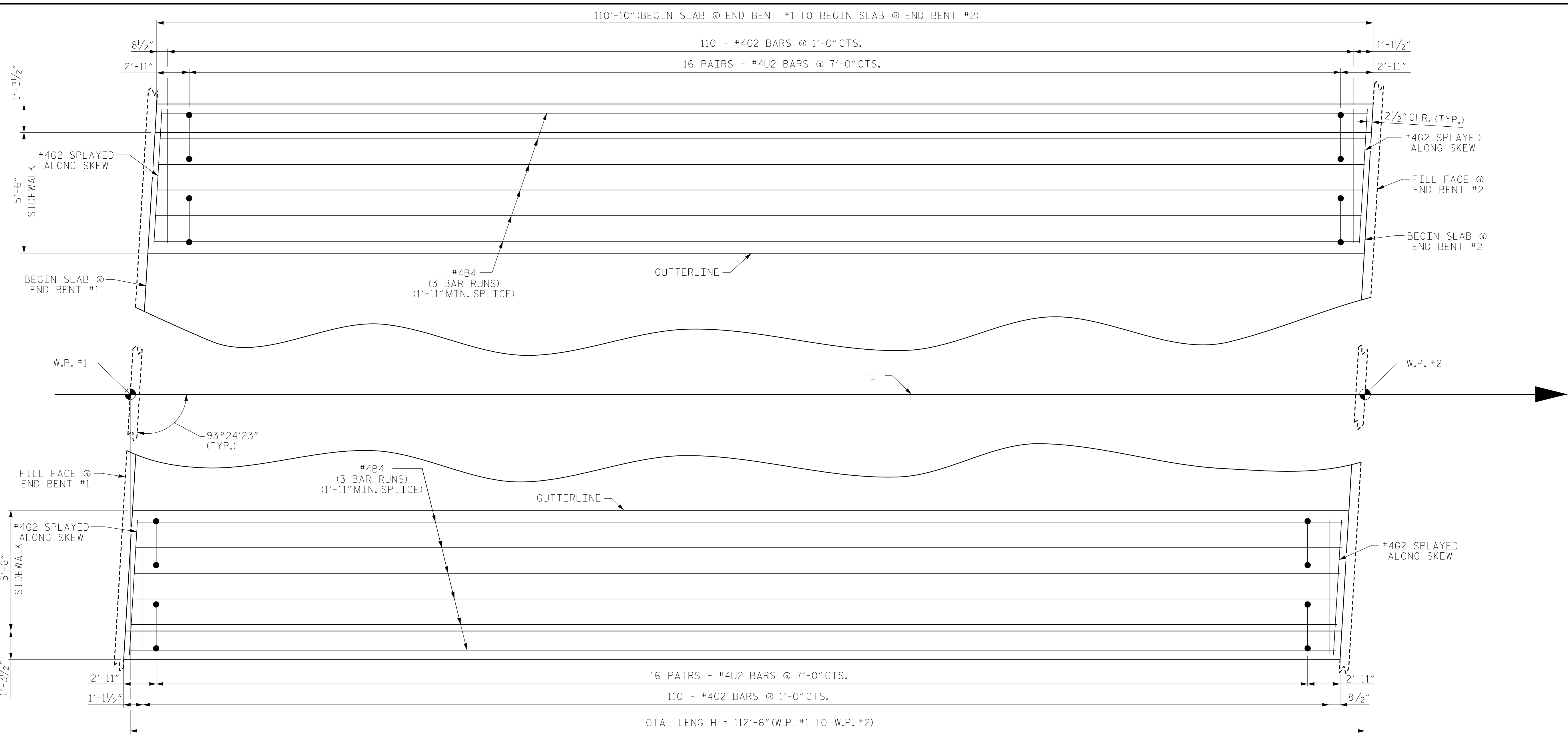
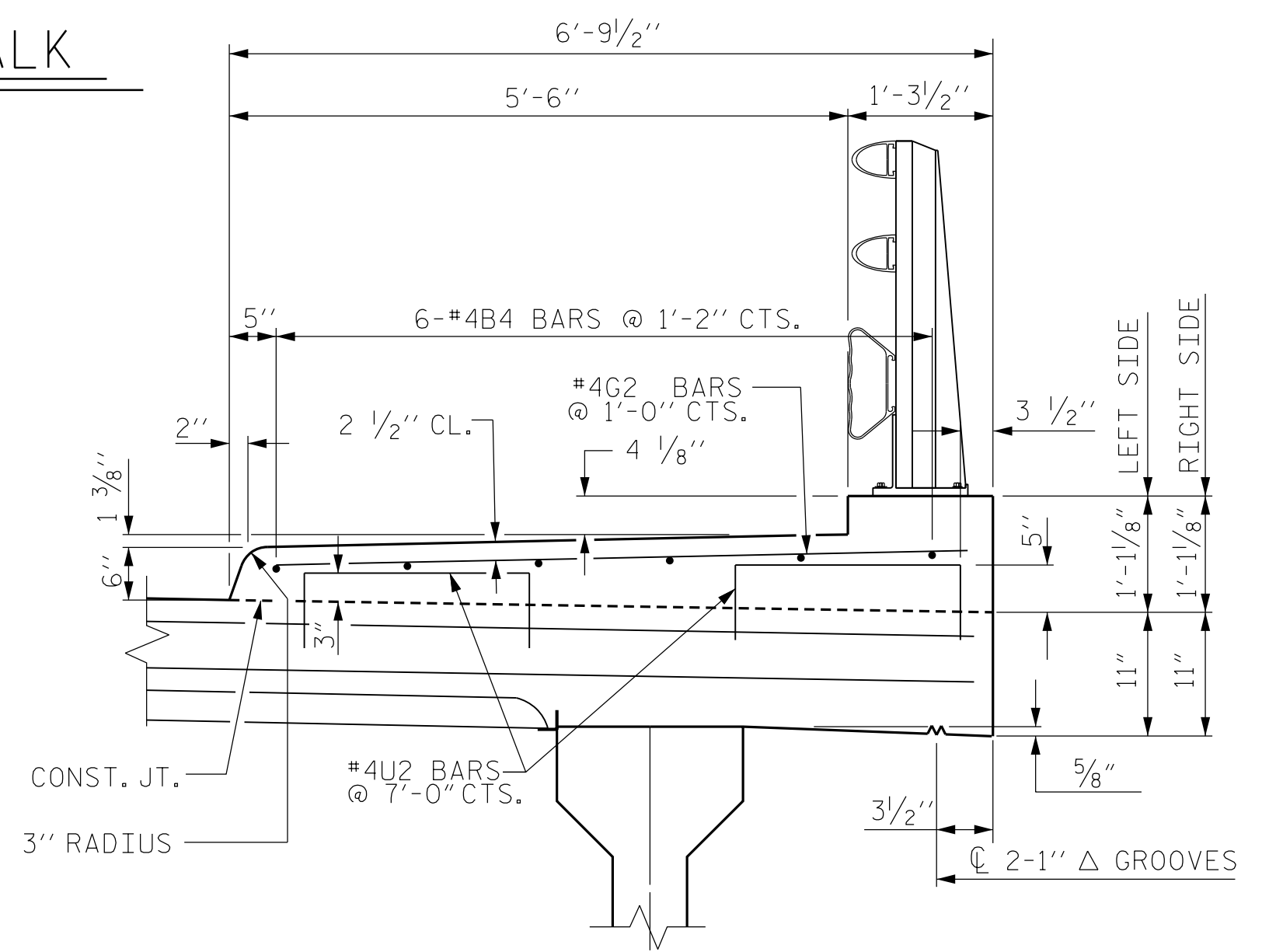


1/12/2022 02:19:10 PM 10101-103\B5737-STRUC\Drawings\01-CADD\03-Final\Drawings\01\_023\_B5737\_SMU\_SW01\_012\_780108.dgn  
 P:\jacob



**PLAN SIDEWALK**

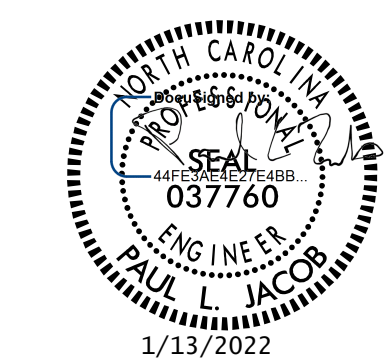


**SECTION THRU SIDEWALK**

**NOTES**

SIDEWALK IN A CONTINUOUS UNIT SHALL NOT BE CAST UNTIL ALL SLAB CONCRETE IN THE UNIT HAS BEEN CAST AND HAS REACHED A MINIMUM COMPRESSIVE STRENGTH OF 3000 PSI.  
 ALL REINFORCING STEEL IN SIDEWALK SHALL BE EPOXY COATED.  
 GROOVED CONTRACTION JOINTS, 1/2" IN DEPTH, SHALL BE TOOLED IN ALL EXPOSED FACES OF THE SIDEWALK IN ACCORDANCE WITH ARTICLE 825-10(B) OF THE STANDARD SPECIFICATIONS. THE CONTRACTION JOINTS SHALL BE LOCATED AT A SPACING OF 8 FT. TO 10 FT. BETWEEN EXPANSION JOINTS. NO CONTRACTION JOINT WILL BE REQUIRED FOR SEGMENTS LESS THAN 10 FT. IN LENGTH.  
 FOR SIDEWALK REINFORCING STEEL AND CONCRETE QUANTITIES SEE SUPERSTRUCTURE "BILL OF MATERIAL" SHEET.  
 PAYMENT FOR SIDEWALK SHALL BE INCLUDED IN PAY ITEM FOR "REINFORCED CONCRETE DECK SLAB".  
 U1 DOWEL BARS MAY BE PUSHED INTO GREEN CONCRETE AFTER SPAN HAS BEEN SCREEDED OFF.

PROJECT NO. B-5737  
ROCKINGHAM COUNTY  
 STATION: 20+86.07 -L-



STATE OF NORTH CAROLINA  
 DEPARTMENT OF TRANSPORTATION  
 RALEIGH

SIDEWALK DETAILS

DRAWN BY : J. LOFTUS DATE : 03-2021  
 CHECKED BY : P. JACOB DATE : 07-2021  
 DESIGN ENGINEER OF RECORD: J. LOFTUS DATE : 04-2021

**moffatt & nichol**  
 4700 FALLS OF NEUSE ROAD, SUITE 300  
 RALEIGH, NORTH CAROLINA 27609  
 (919) 781-4626 VOICE (919) 781-4869 FAX  
 NC License No.: F-0105

DOCUMENT NOT CONSIDERED  
 FINAL UNLESS ALL  
 SIGNATURES COMPLETED

REVISIONS						SHEET NO.
NO.	BY:	DATE:	NO.	BY:	DATE:	S-12
1			3			TOTAL SHEETS
2			4			29