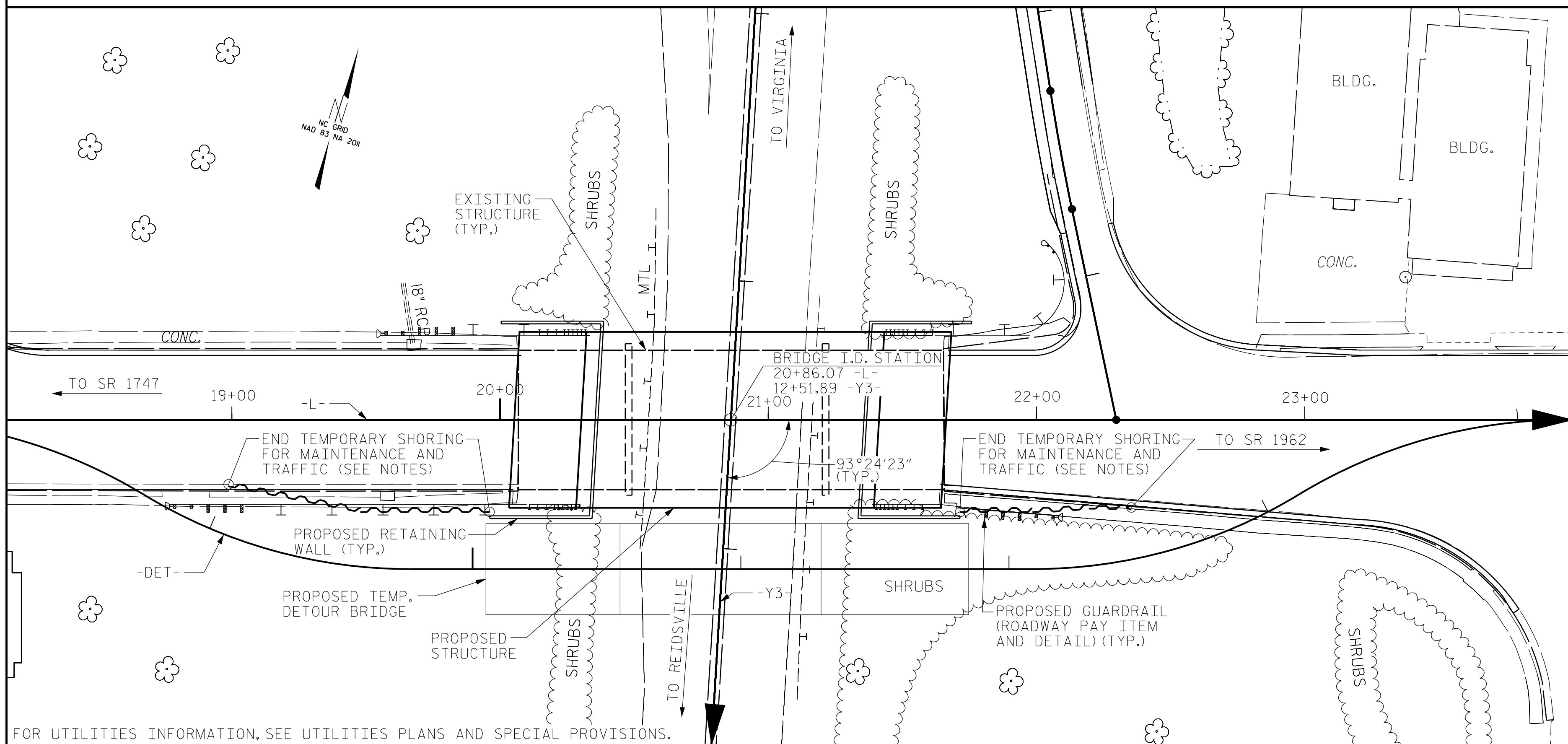


BM #2 - SPIKE IN 18" MAPLE, 216.7' LT. OF 18+80.99 -L-, EL. 656.51



LOCATION SKETCH

NOTES

- ASSUMED LIVE LOAD= HL-93 OR ALTERNATE LOADING.
- THIS BRIDGE HAS BEEN DESIGNED IN ACCORDANCE WITH THE REQUIREMENTS OF THE AASHTO LRFD BRIDGE DESIGN SPECIFICATIONS.
- THIS BRIDGE IS LOCATED IN SEISMIC ZONE 1.
- FOR OTHER DESIGN DATA AND GENERAL NOTES, SEE SHEET SN.
- FOR EROSION CONTROL MEASURES, SEE EROSION CONTROL PLANS.
- FOR SUBMITTAL OF WORKING DRAWINGS, SEE SPECIAL PROVISIONS.
- FOR FALSEWORK AND FORMWORK, SEE SPECIAL PROVISIONS.
- FOR CRANE SAFETY, SEE SPECIAL PROVISIONS.
- FOR GROUT FOR STRUCTURES, SEE SPECIAL PROVISIONS.
- THE ELEVATIONS AND CLEARANCES SHOWN ON THE PLANS AT THE POINT(S) OF MINIMUM VERTICAL CLEARANCE ARE FROM THE BEST INFORMATION AVAILABLE, PRIOR TO BEGINNING BRIDGE CONSTRUCTION, VERIFY THE ELEVATION(S) ON THE EXISTING PAVEMENT AND CHECK THE CLEARANCE, REPORT ANY VARIATIONS TO THE ENGINEER. ANY PLAN REVISIONS NECESSARY TO ACHIEVE THE REQUIRED MINIMUM VERTICAL CLEARANCE WILL BE PROVIDED BY THE DEPARTMENT.
- FOR MAINTENANCE AND PROTECTION OF TRAFFIC BENEATH PROPOSED STRUCTURE, SEE SPECIAL PROVISIONS.
- PRESTRESSED CONCRETE DECK PANELS MAY BE USED IN LIEU OF METAL STAY-IN-PLACE FORMS IN ACCORDANCE WITH ARTICLE 420-3 OF THE STANDARD SPECIFICATIONS.
- REMOVABLE FORMS MAY BE USED IN LIEU OF METAL STAY-IN-PLACE FORMS IN ACCORDANCE WITH ARTICLE 420-3 OF THE STANDARD SPECIFICATIONS.
- NEEDLE BEAMS WILL NOT BE ALLOWED UNLESS OTHERWISE CALLED FOR ON THE PLANS OR APPROVED BY THE ENGINEER.
- INASMUCH AS THE PAINT SYSTEM ON THE EXISTING STRUCTURAL STEEL CONTAINS LEAD, THE CONTRACTOR'S ATTENTION IS DIRECTED TO ARTICLE 107-1 OF THE STANDARD SPECIFICATIONS. ANY COSTS RESULTING FROM COMPLIANCE WITH APPLICABLE STATE OR FEDERAL REGULATIONS PERTAINING TO HANDLING OF MATERIALS CONTAINING LEAD BASED PAINT SHALL BE INCLUDED IN THE BID PRICE FOR 'REMOVAL OF EXISTING STRUCTURE AT STATION 20+86.07 -L-.'
- THE CLASS AA CONCRETE IN THE BRIDGE DECK SHALL CONTAIN FLY ASH OR GROUND GRANULATED BLAST FURNACE SLAG AT THE SUBSTITUTION RATE SPECIFIED IN ARTICLE 1024-1 AND IN ACCORDANCE WITH ARTICLES 1024-5 AND 1024-6 OF THE STANDARD SPECIFICATIONS. NO PAYMENT WILL BE MADE FOR THIS SUBSTITUTION AS IT IS CONSIDERED INCIDENTAL TO THE COST OF THE REINFORCED CONCRETE DECK SLAB.
- THE CONTRACTOR WILL BE REQUIRED TO CONSTRUCT, MAINTAIN AND AFTERWARDS REMOVE A TEMPORARY STRUCTURE AT STATION 20+92.99 -DET- FOR USE DURING CONSTRUCTION OF THE PROPOSED STRUCTURE. FOR CONSTRUCTION, MAINTENANCE AND REMOVAL OF TEMPORARY STRUCTURE, SEE SPECIAL PROVISIONS.
- THE EXISTING STRUCTURE, BRIDGE 108, CONSISTING OF THREE SPANS (44', 71' & 44') OF A REINFORCED CONCRETE DECK ON STEEL I-BEAMS WITH A 52'-0" CLEAR ROADWAY ON REINFORCED CONCRETE CAPS WITH SPREAD FOOTINGS AT THE END BENTS AND A REINFORCED CONCRETE BENT ON SPREAD FOOTINGS AND LOCATED AT THE PROPOSED STRUCTURE SHALL BE REMOVED. THE EXISTING BRIDGE IS PRESENTLY NOT POSTED FOR LOAD LIMIT. SHOULD THE STRUCTURAL INTEGRITY OF THE BRIDGE DETRIORATE DURING CONSTRUCTION OF THE PROPOSED BRIDGE, A LOAD LIMIT MAY BE POSTED AS FOUND NECESSARY DURING THE LIFE OF THE PROJECT.
- THE SUBSTRUCTURE OF THE EXISTING BRIDGE INDICATED ON THE PLANS IS FROM THE BEST INFORMATION AVAILABLE. THE INFORMATION IS SHOWN FOR THE CONVENIENCE OF THE CONTRACTOR. THE CONTRACTOR SHALL HAVE NO CLAIM WHATSOEVER AGAINST THE DEPARTMENT OF TRANSPORTATION FOR ANY DELAYS OR ADDITIONAL COST INCURRED BASED ON DIFFERENCES BETWEEN THE EXISTING BRIDGE SUBSTRUCTURE SHOWN ON THE PLANS AND THE ACTUAL CONDITIONS AT THE PROJECT SITE.
- FOR ASBESTOS ASSESSMENT FOR BRIDGE DEMOLITION AND RENOVATION ACTIVITIES, SEE SPECIAL PROVISIONS.
- FOR LIMITS OF TEMPORARY SHORING FOR MAINTENANCE OF TRAFFIC, SEE TRAFFIC CONTROL PLANS. FOR PAY ITEM FOR TEMPORARY SHORING FOR MAINTENANCE OF TRAFFIC, SEE ROADWAY PLANS.
- FOR FOUNDATION NOTES, SEE SHEET S-2.

TOTAL BILL OF MATERIAL

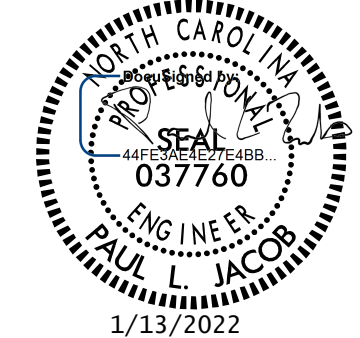
	CONSTRUCTION MAINTENANCE & REMOVAL OF TEMPORARY STRUCTURE AT STA. 20+92.99 -DET-	REMOVAL OF EXISTING STRUCTURE AT STA. 20+86.07 -L-	ASBESTOS ASSESSMENT	PILE EXCAVATION NOT IN SOIL	REINFORCED CONCRETE DECK SLAB	GROOVING BRIDGE FLOORS	CLASS A CONCRETE	BRIDGE APPROACH SLABS STA. 20+86.07 -L-	REINFORCING STEEL	54" PRESTRESSED CONCRETE GIRDERS	PILE DRIVING EQUIPMENT SETUP FOR HP 12 X 53 STEEL PILES	HP 12 X 53 STEEL PILES	THREE BAR METAL RAIL	4" SLOPE PROTECTION	ELASTOMERIC BEARINGS		
	LUMP SUM	LUMP SUM	LUMP SUM	LIN.FT.	SQ.FT.	SQ.FT.	CU.YDS.	LUMP SUM	LBS.	NO.	LIN.FT.	EACH	NO.	LIN.FT.	SQ.YDS.	LUMP SUM	
SUPERSTRUCTURE					7,269	7,783				7	772.84				306.50		
END BENT NO.1				120					7,037		12	12	360		16		
END BENT NO.2				120					7,037		12	12	360		16		
TOTAL	LUMP SUM	LUMP SUM	LUMP SUM	240	7,269	7,783	82.1	LUMP SUM	14,074	7	772.84	24	24	720	306.50	32	LUMP SUM

PROJECT NO. B-5737
ROCKINGHAM COUNTY
 STATION: 20+86.07 -L-

SHEET 3 OF 4

STATE OF NORTH CAROLINA
 DEPARTMENT OF TRANSPORTATION
 RALEIGH

GENERAL DRAWING
 FOR BRIDGE OVER NC 14/87/770
 ON NC 700 BETWEEN
 SR 1747 AND SR 1962



DRAWN BY : J. LOFTUS DATE : 03-2021
 CHECKED BY : P. JACOB DATE : 07-2021
 DESIGN ENGINEER OF RECORD: J. LOFTUS DATE : 04-2021

moffatt & nichol
 4700 FALLS OF NEUSE ROAD, SUITE 300
 RALEIGH, NORTH CAROLINA 27609
 (919) 781-4626 VOICE (919) 781-4869 FAX
 NC License No.: F-0105

DOCUMENT NOT CONSIDERED
 FINAL UNLESS ALL
 SIGNATURES COMPLETED

REVISIONS						SHEET NO.
NO.	BY:	DATE:	NO.	BY:	DATE:	S-3
1			3			TOTAL SHEETS
2			4			29

1/12/2022 10:01:10 AM 103\B5737\Structures\01-CADD\03-Final Drawings\01_005_B5737_SML\1503_003_780108.dgn
 P:\jacob