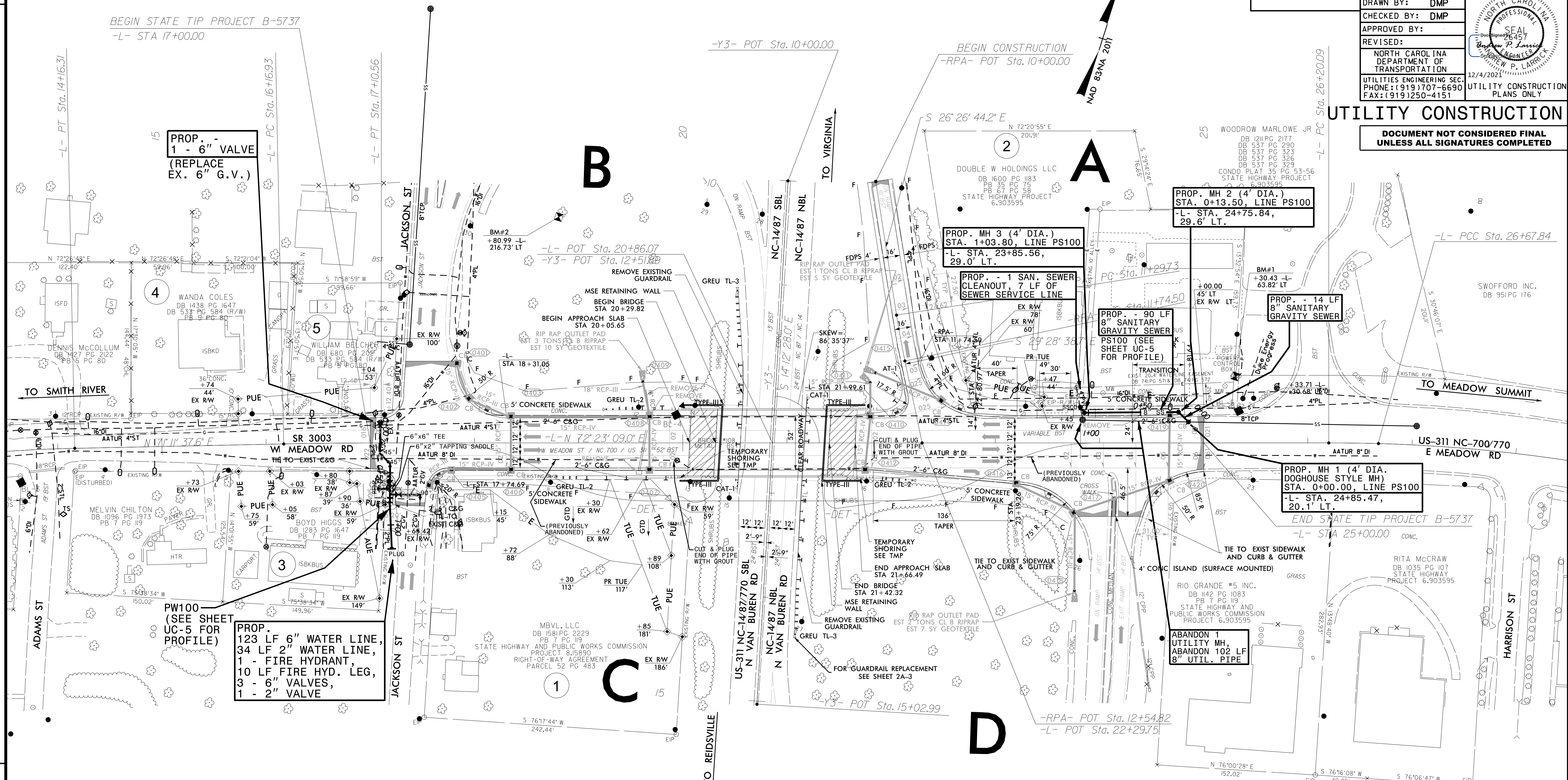




PROJECT REFERENCE NO.	SHEET NO.
B-5737	UC-4
DESIGNED BY: DMP	
DRAWN BY: DMP	
CHECKED BY: DMP	
APPROVED BY:	
REVISED:	
NORTH CAROLINA DEPARTMENT OF TRANSPORTATION	12/4/2021
UTILITIES ENGINEERING SEC. PHONE: (919) 707-6690 FAX: (919) 250-4151	UTILITY CONSTRUCTION PLANS ONLY

**UTILITY CONSTRUCTION**

**DOCUMENT NOT CONSIDERED FINAL UNLESS ALL SIGNATURES COMPLETED**



THE ESTIMATED QUANTITY OF D.I. WATER PIPE FITTINGS ON THIS PLAN SHEET IS 300 POUNDS. THE ACTUAL QUANTITY AND TYPE OF FITTINGS WILL VARY BASED ON FIELD CONDITIONS.

PI Sta 13+40.63	PI Sta 16+63.75	PI Sta 28+53.50
Δ = 6' 15" 49.2" (RT)	Δ = 1' 11" 31.5" (RT)	Δ = 14' 26" 10.3" (RT)
D = 4' 08" 02.3"	D = 1' 16" 23.7"	D = 3' 54" 30.9"
L = 151.52'	L = 93.63'	L = 369.35'
T = 75.83'	T = 46.81'	T = 185.66'
R = 1,385.97'	R = 4,499.99'	R = 1,465.90'

-RPA-

PI Sta 11+52.12  
 Δ = 3' 01" 54.5" (LT)  
 D = 6' 46" 21.2"  
 L = 44.77'  
 T = 22.39'  
 R = 846.00'  
 SE = 04  
 Runoff = 110'  
 DS = 40MPH