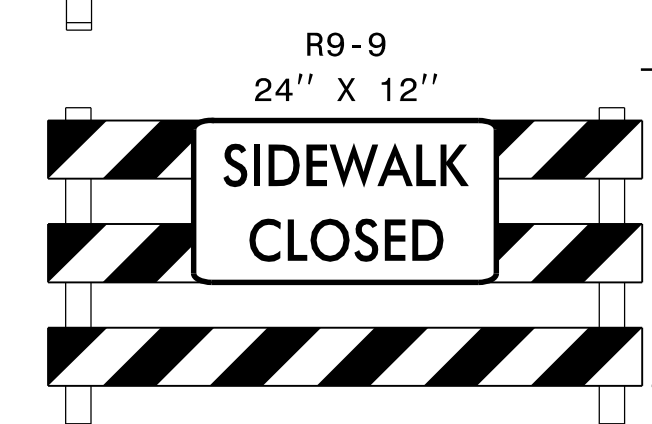
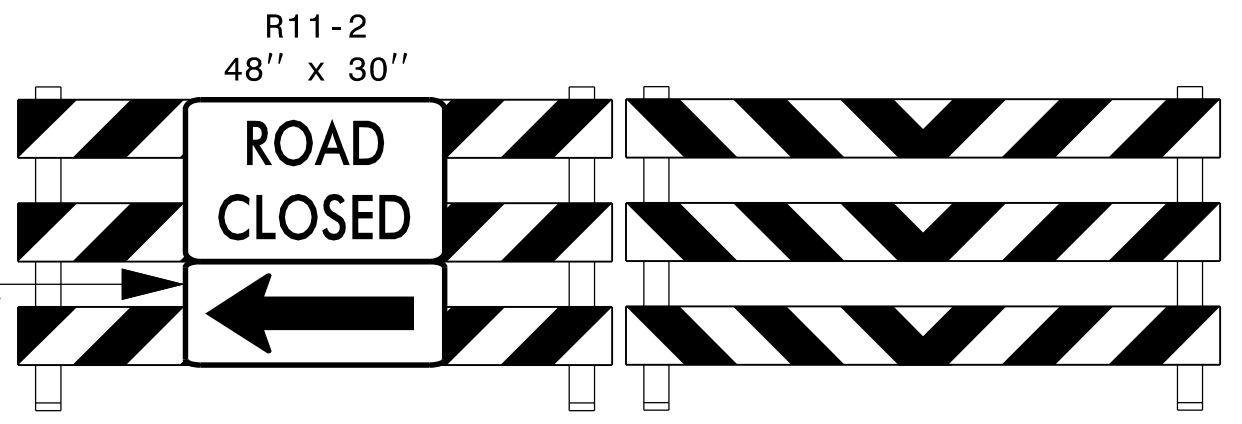
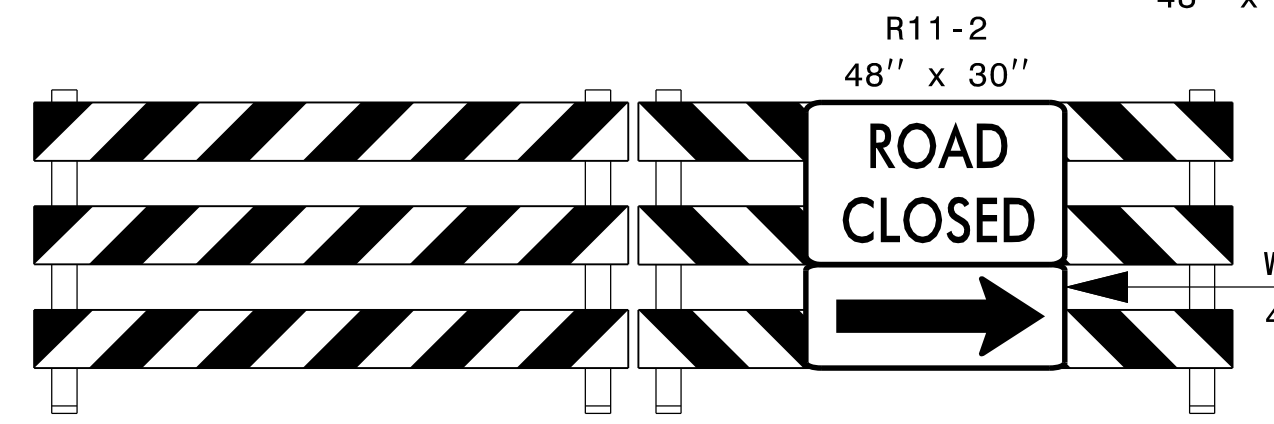
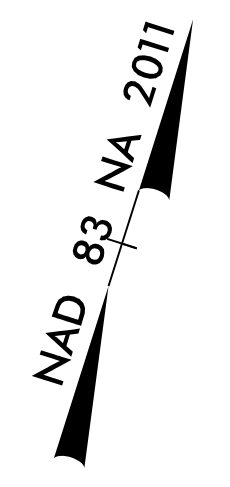
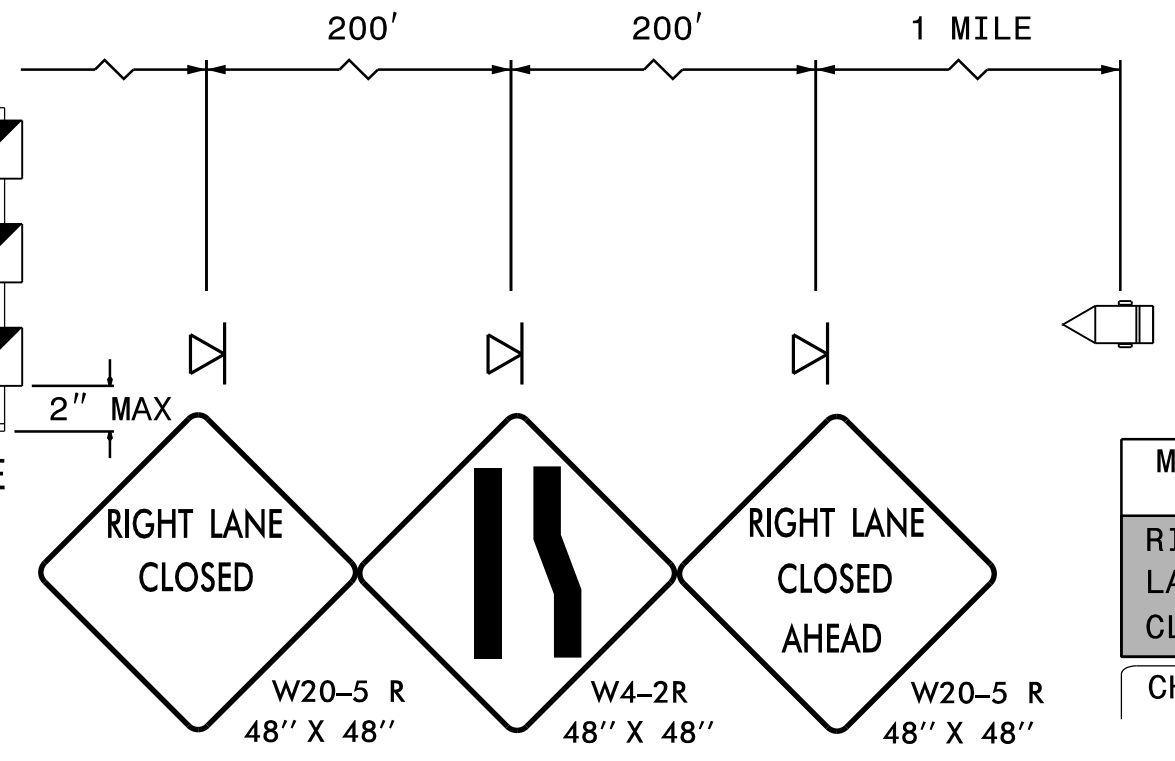


INSTALL ADVANCE SIGNING PER RSD 1101.03 (3 OF 9) FOR -L-



SEE RSD 1101.02 (3 OF 14) FOR TEMPORARY LANE CLOSURE

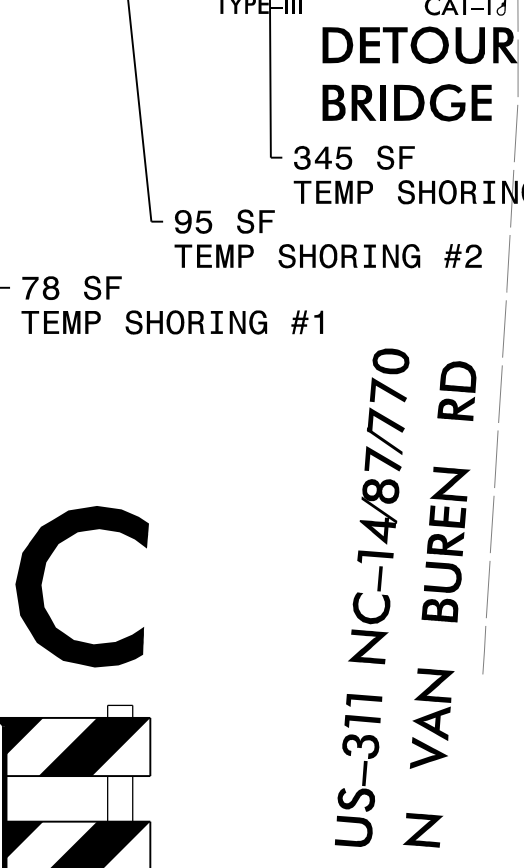
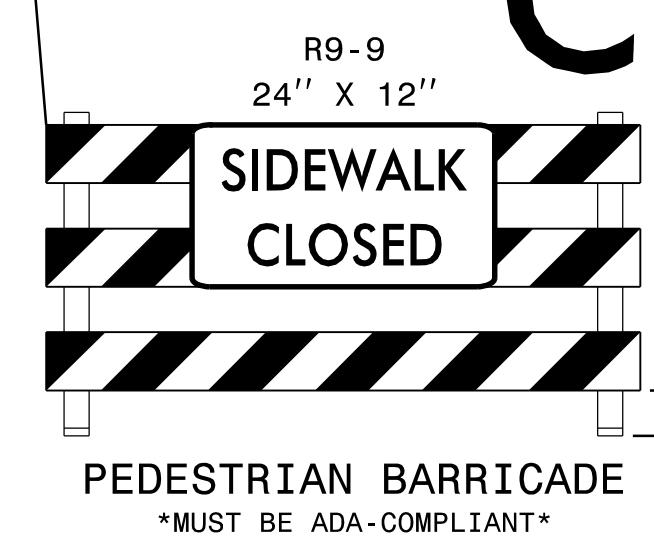
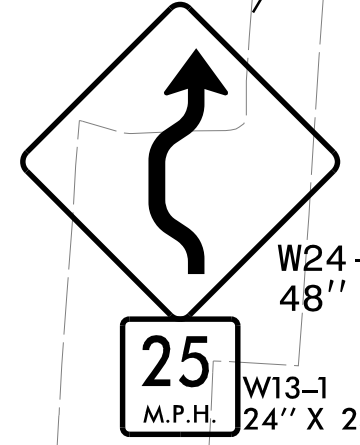
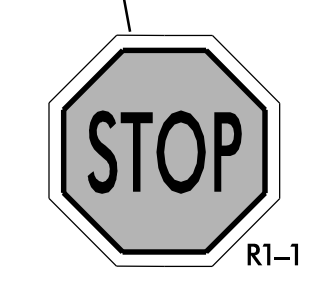
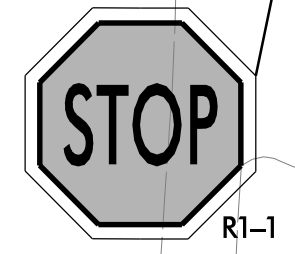
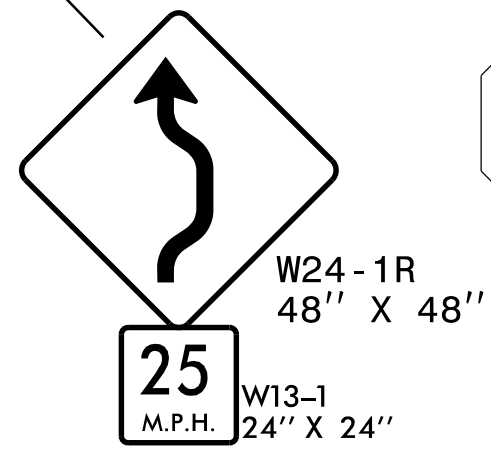
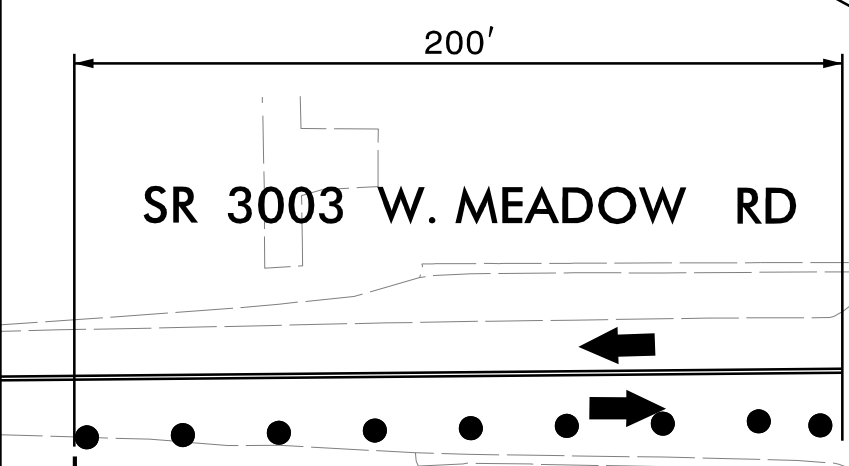


|                         |               |
|-------------------------|---------------|
| MESSAGE NO. 1           | MESSAGE NO. 2 |
| RIGHT LANE CLOSED       | MERGE LEFT    |
| CHANGEABLE MESSAGE SIGN |               |

NOTE: RAMP A CLOSED SEE TMP 3A FOR TEMPORARY DETOUR

NOTE: CONTRACTOR TO UTILIZE THE PEDESTRIAN TRANSPORT SERVICE

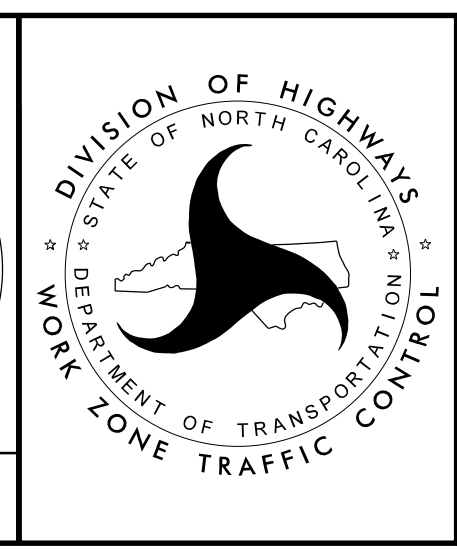
NOTE: CONTRACTOR TO UTILIZE THE PEDESTRIAN TRANSPORT SERVICE



2/2/2022  
G:\RA\1001-103\B5737\TrafficControl\TCP\B5737-1c-tmp\_06.dgn  
gmedlin

**moffatt & nichol**  
4700 FALLS OF NEUSE ROAD, SUITE 300  
RALEIGH, NORTH CAROLINA 27609  
(919) 781-4626 VOICE (919) 781-4869 FAX  
NC License NO.: F-0105

APPROVED: *Trent E. Huffman*  
DATE: 2/3/2022  
SEAL  
DOCUMENT NOT CONSIDERED FINAL  
UNLESS ALL SIGNATURES COMPLETED



PHASE 2 STEP 1  
-L- AND -RPA-