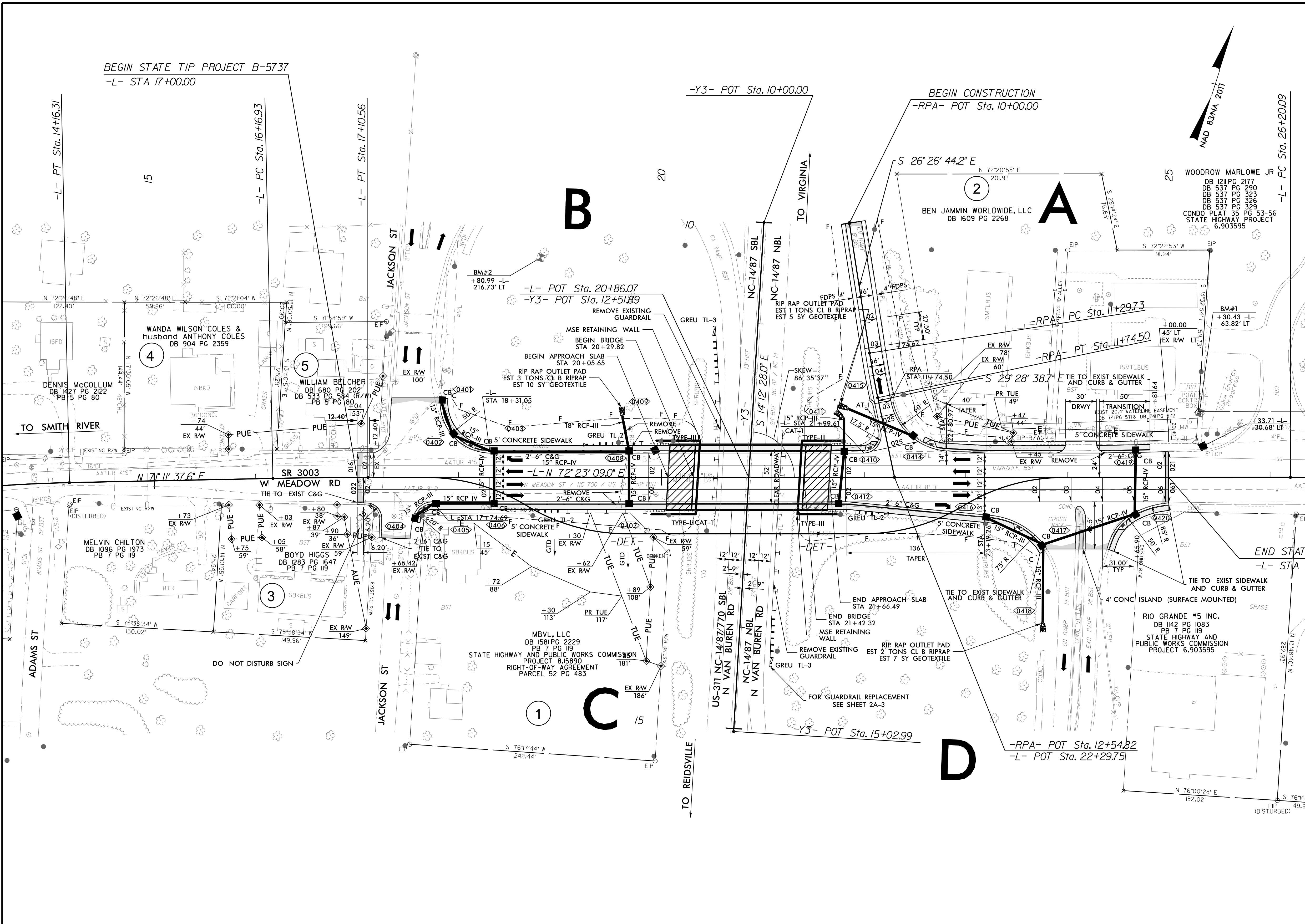


PROJECT REFERENCE NO. <b>B-5737</b>		SHEET NO. <b>4</b>	
RW SHEET NO. ROADWAY DESIGN ENGINEER		HYDRAULICS ENGINEER	
<b>DOCUMENT NOT CONSIDERED FINAL UNLESS ALL SIGNATURES COMPLETED</b>			
		<small>4700 FALLS OF NEUSE ROAD, SUITE 300 RALEIGH, NORTH CAROLINA 27609 (919) 781-4626 VOICE (919) 781-8863 FAX NC License No. J-F-0105</small>	



-L-		-RPA-	
PI Sta 13+40.63	PI Sta 16+63.75	PI Sta 28+53.50	PI Sta 11+52.12
$\Delta = 6' 15'' 49.2''$ (RT)	$\Delta = 1' 11'' 31.5''$ (RT)	$\Delta = 14' 26'' 10.3''$ (RT)	$\Delta = 3' 01'' 54.5''$ (LT)
D = 4' 08'' 02.3"	D = 1' 16'' 23.7"	D = 3' 54'' 30.9"	D = 6' 46'' 21.2"
L = 151.52'	L = 93.63'	L = 369.35'	L = 44.77'
T = 75.83'	T = 46.81'	T = 185.66'	T = 22.39'
R = 1,385.97'	R = 4,499.99'	R = 1,465.90'	R = 846.00'
			SE = 04
			Runoff = 110'
			DS = 40MPH

ALL DRIVE RADII 10' UNLESS OTHERWISE NOTED  
 FOR DETOUR, SEE SHEET NO. 2B-1  
 FOR STRUCTURE PLANS SEE S-1 THRU S-28  
 FOR WALL PLANS SEE W-1 THRU W-4  
 FOR PROFILE, SEE SHEET NO. 5

8/17/19  
 2/2/2022  
 C:\Users\10011-103\B5737\Roadway\Proj\B5737\_rdy\_pah\_04.dgn  
 H:\Eman