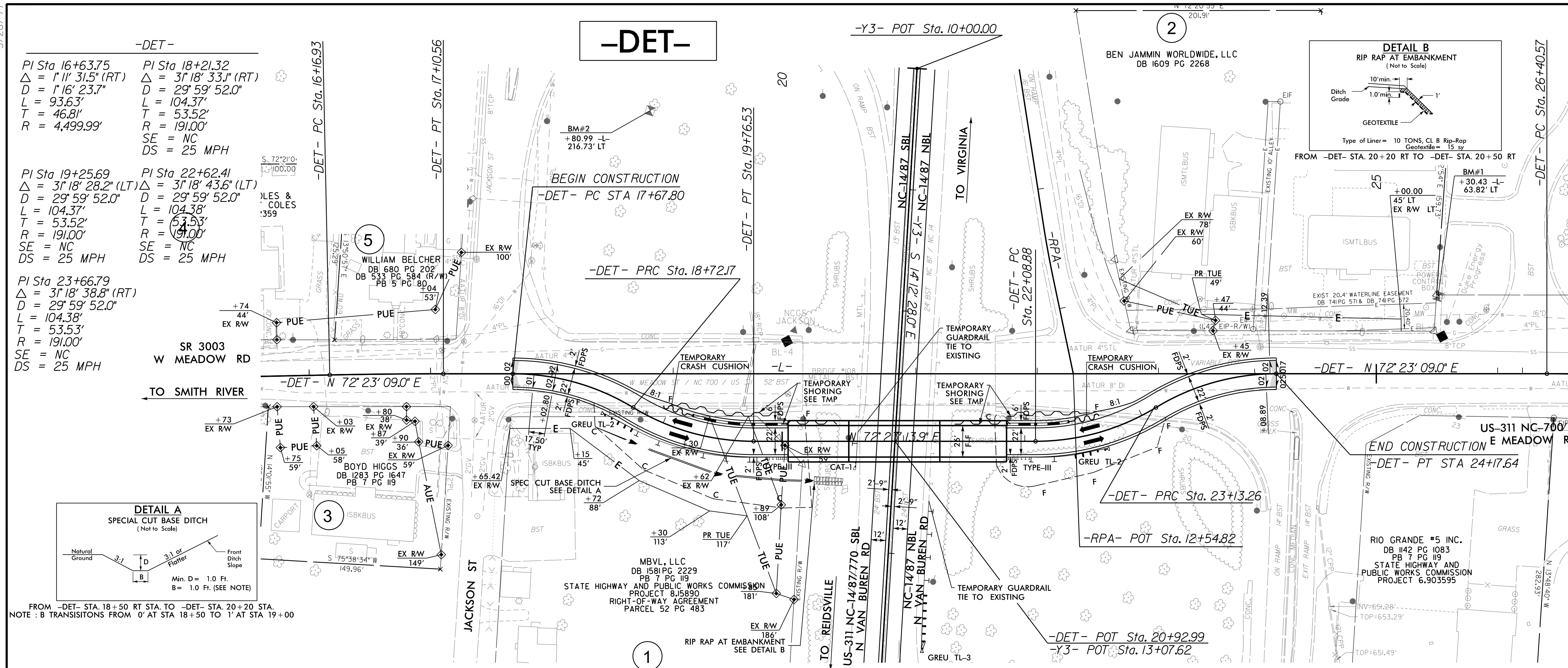
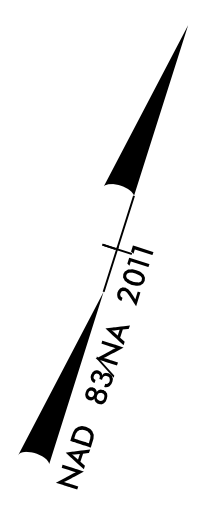


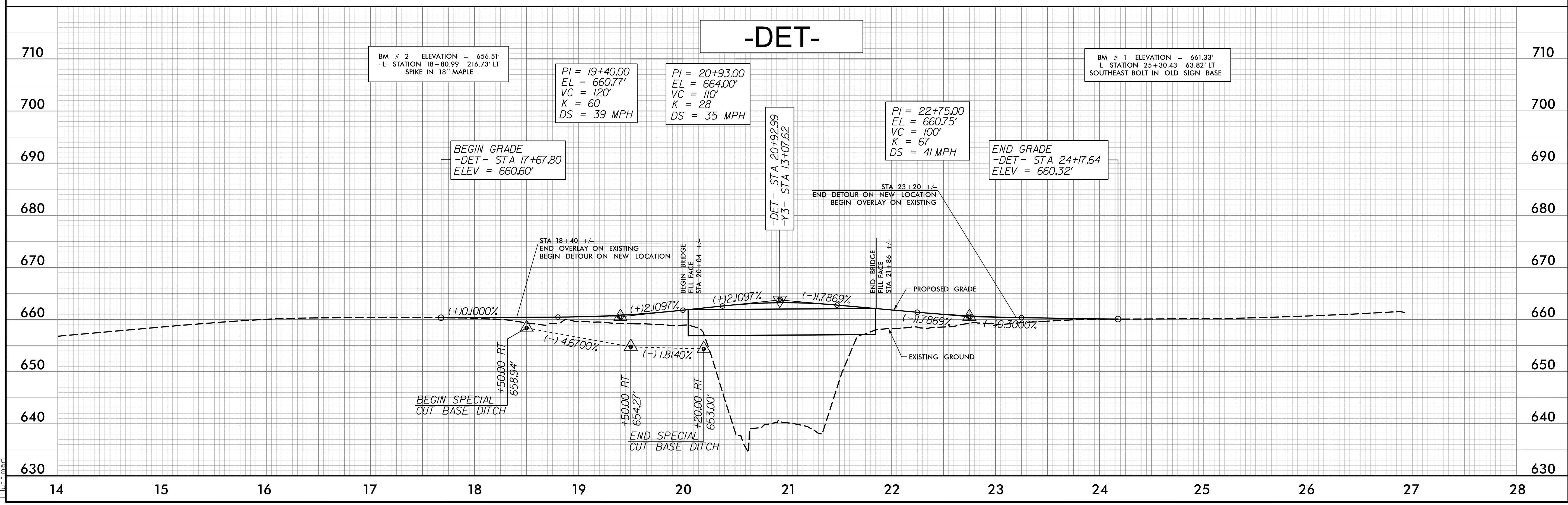
5/28/2022



PROJECT REFERENCE NO. <b>B-5737</b>	SHEET NO. <b>2B-1</b>
ROADWAY DESIGN ENGINEER  <b>E. HURTTMAN</b> 2/3/2022	HYDRAULICS ENGINEER  <b>CAMERON M. LONG</b> 2/3/2022
<b>DOCUMENT NOT CONSIDERED FINAL</b> <b>UNLESS ALL SIGNATURES COMPLETED</b>	



FOR L PLAN, SEE SHEET NO. 4



0:\2022\11-103\B5737\Roadway\Proj\B5737\_rdy\_psh\_2B-1.dgn