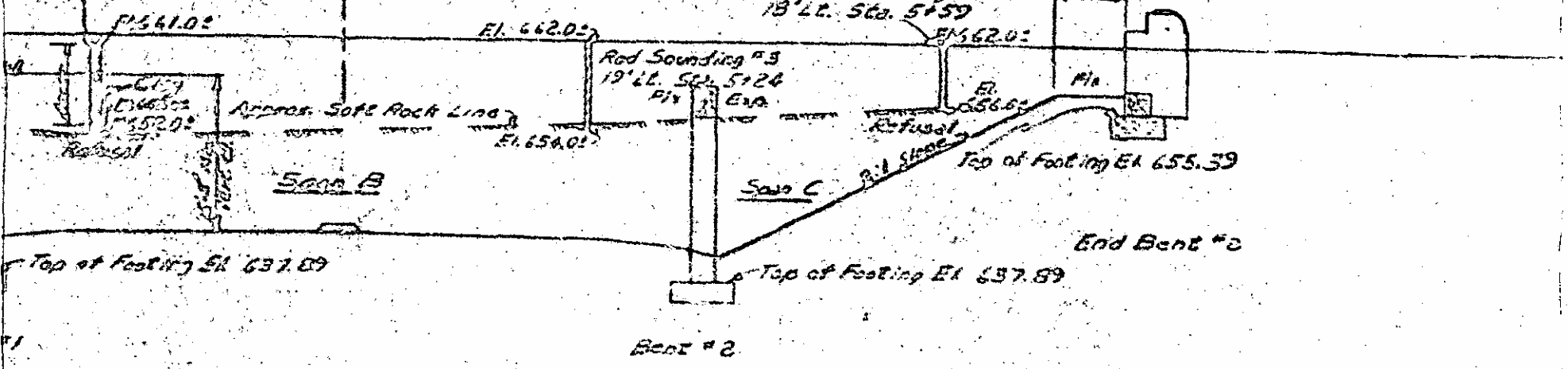


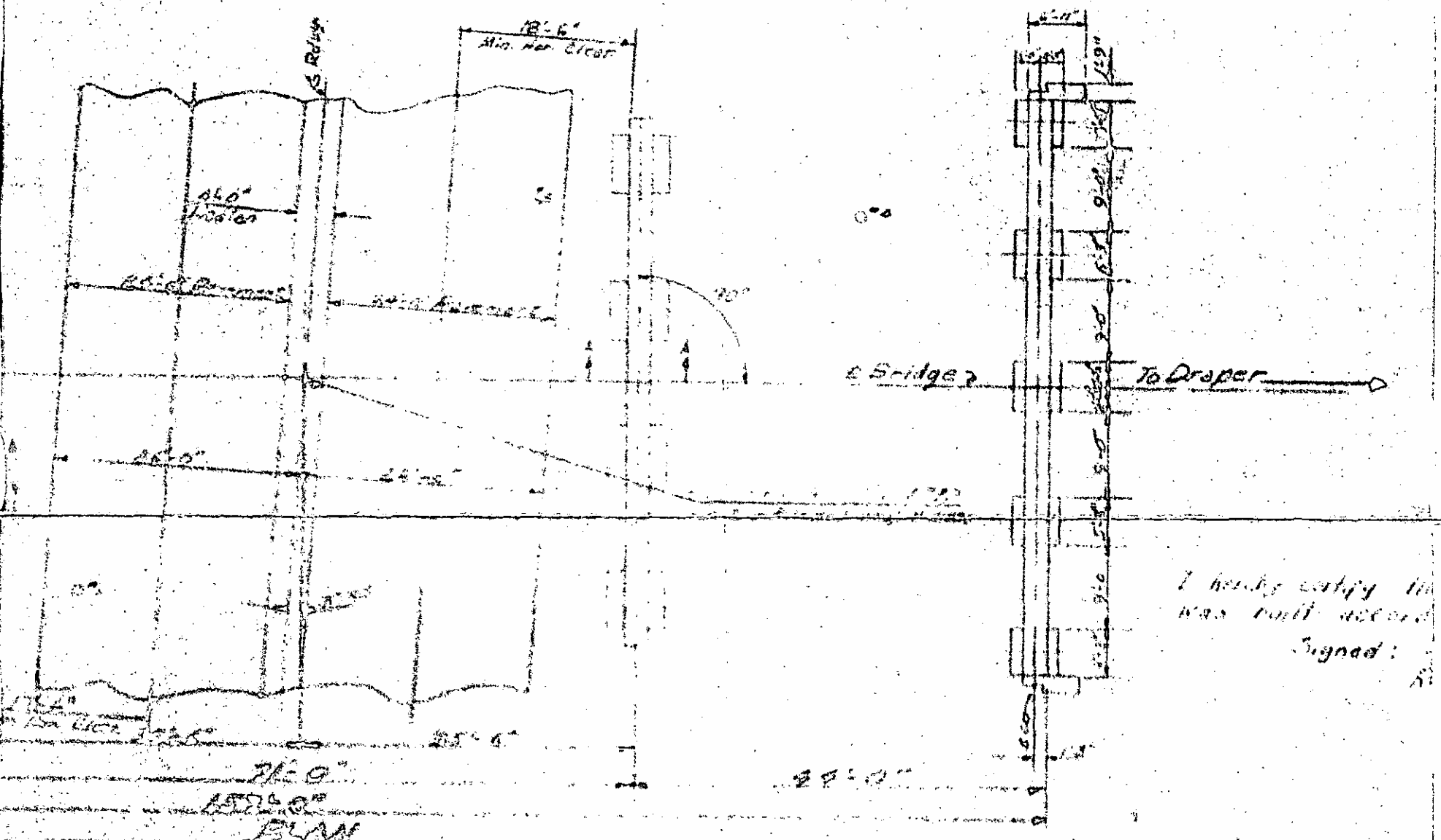
Sounding #1
Sta. 5+76

Sta. 5+00 to 700 8770 = 530 + 86.1 Proj. 0.15890

Rad Sounding #6
18' L. Sta. 5+59



ELEVATION ALONG & ROADWAY
END STATES & BENTS ALONG SECTION A-A



I hereby certify this
was built according
Signed:

Table with 6 columns: Item Description, Quantity, Unit, Price, Total, Remarks. The table lists materials and quantities for the bridge project.

TOTAL BILL OF MATERIALS					
Item Description	Quantity	Unit	Price	Total	Remarks
1/2" x 1/2" x 1/2" Structural Steel	100	lb	0.15	15.00	
1/2" x 1/2" x 1/2" Structural Steel	200	lb	0.15	30.00	
1/2" x 1/2" x 1/2" Structural Steel	300	lb	0.15	45.00	
1/2" x 1/2" x 1/2" Structural Steel	400	lb	0.15	60.00	
1/2" x 1/2" x 1/2" Structural Steel	500	lb	0.15	75.00	
1/2" x 1/2" x 1/2" Structural Steel	600	lb	0.15	90.00	
1/2" x 1/2" x 1/2" Structural Steel	700	lb	0.15	105.00	
1/2" x 1/2" x 1/2" Structural Steel	800	lb	0.15	120.00	
1/2" x 1/2" x 1/2" Structural Steel	900	lb	0.15	135.00	
1/2" x 1/2" x 1/2" Structural Steel	1000	lb	0.15	150.00	

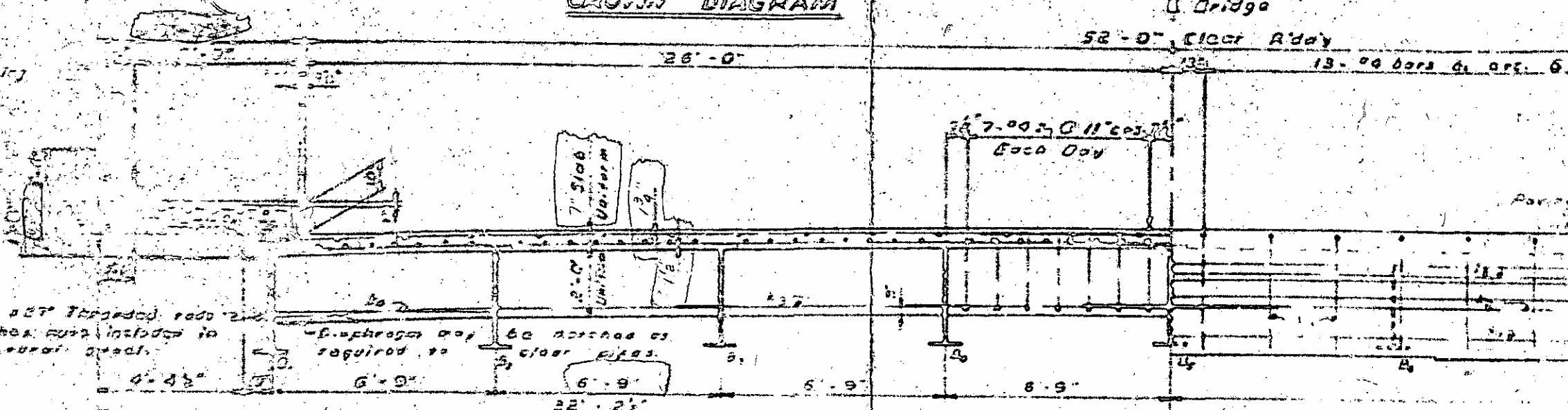
107
 107-00
 107-01
 107-02
 107-03
 107-04
 107-05
 107-06
 107-07
 107-08
 107-09
 107-10
 107-11
 107-12
 107-13
 107-14
 107-15
 107-16
 107-17
 107-18
 107-19
 107-20
 107-21
 107-22
 107-23
 107-24
 107-25
 107-26
 107-27
 107-28
 107-29
 107-30
 107-31
 107-32
 107-33
 107-34
 107-35
 107-36
 107-37
 107-38
 107-39
 107-40
 107-41
 107-42
 107-43
 107-44
 107-45
 107-46
 107-47
 107-48
 107-49
 107-50
 107-51
 107-52
 107-53
 107-54
 107-55
 107-56
 107-57
 107-58
 107-59
 107-60
 107-61
 107-62
 107-63
 107-64
 107-65
 107-66
 107-67
 107-68
 107-69
 107-70
 107-71
 107-72
 107-73
 107-74
 107-75
 107-76
 107-77
 107-78
 107-79
 107-80
 107-81
 107-82
 107-83
 107-84
 107-85
 107-86
 107-87
 107-88
 107-89
 107-90
 107-91
 107-92
 107-93
 107-94
 107-95
 107-96
 107-97
 107-98
 107-99
 107-100

13 Spacing @ 2'-0" = 26'-0"

CROWN DIAGRAM

Bridge
52'-0" Clear R'ddy

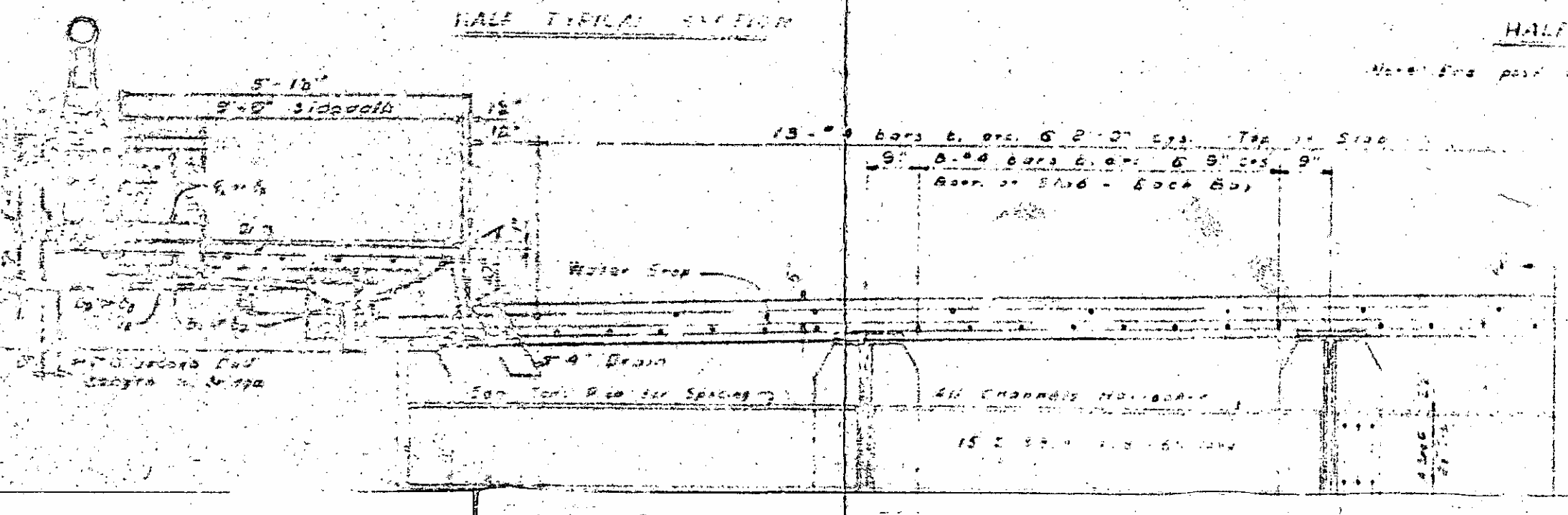
13 - #6 bars @ 2'-0" c/s.



2 #4 bars tapered from 2'-0"
 to 0' max. req. included in
 reinforcement req.

-Reinforcement req.
 required to be provided as
 per clear span.

HALF TYPICAL SECTION



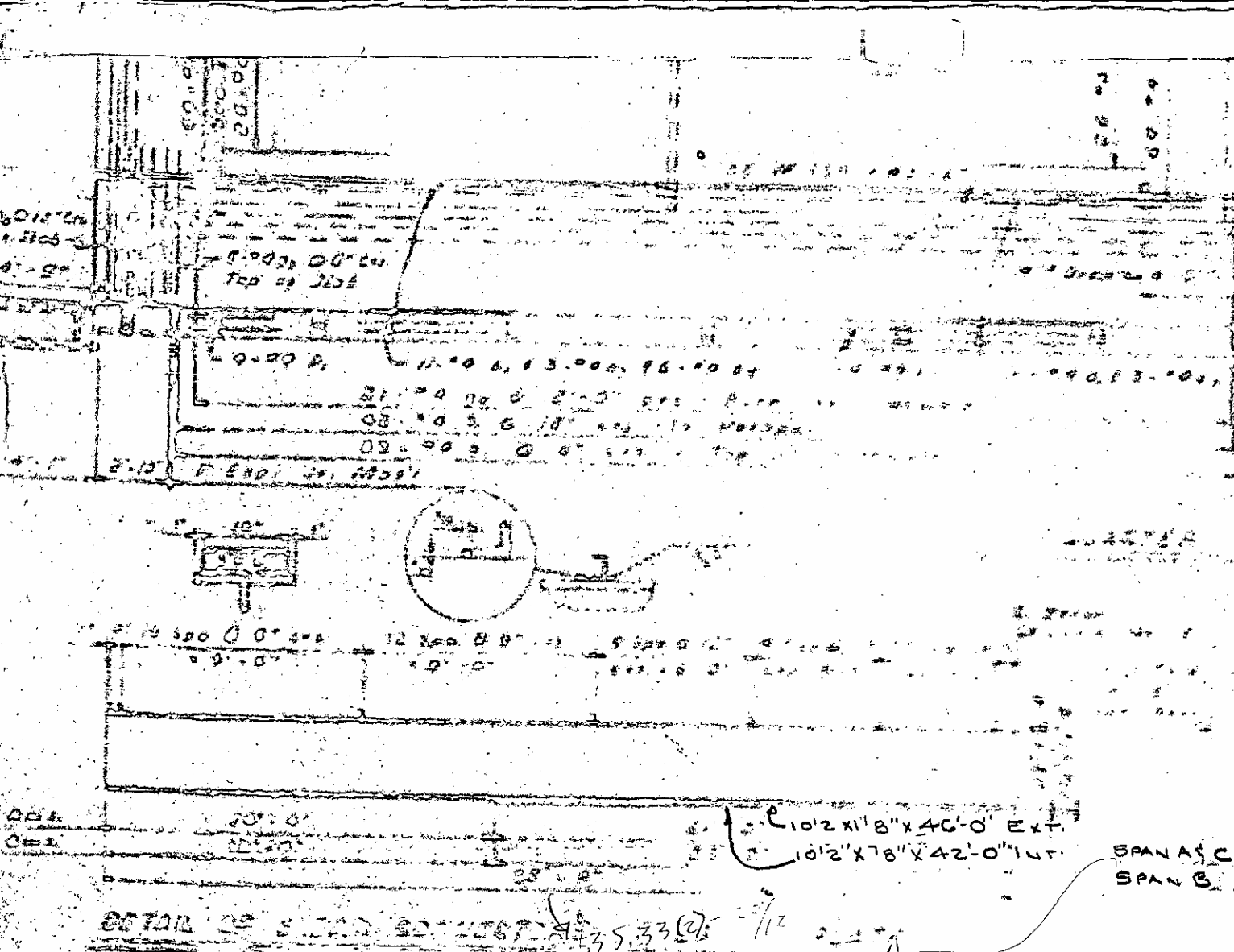
107-101
 107-102
 107-103
 107-104
 107-105
 107-106
 107-107
 107-108
 107-109
 107-110
 107-111
 107-112
 107-113
 107-114
 107-115
 107-116
 107-117
 107-118
 107-119
 107-120
 107-121
 107-122
 107-123
 107-124
 107-125
 107-126
 107-127
 107-128
 107-129
 107-130
 107-131
 107-132
 107-133
 107-134
 107-135
 107-136
 107-137
 107-138
 107-139
 107-140
 107-141
 107-142
 107-143
 107-144
 107-145
 107-146
 107-147
 107-148
 107-149
 107-150
 107-151
 107-152
 107-153
 107-154
 107-155
 107-156
 107-157
 107-158
 107-159
 107-160
 107-161
 107-162
 107-163
 107-164
 107-165
 107-166
 107-167
 107-168
 107-169
 107-170
 107-171
 107-172
 107-173
 107-174
 107-175
 107-176
 107-177
 107-178
 107-179
 107-180
 107-181
 107-182
 107-183
 107-184
 107-185
 107-186
 107-187
 107-188
 107-189
 107-190
 107-191
 107-192
 107-193
 107-194
 107-195
 107-196
 107-197
 107-198
 107-199
 107-200

5'-4" Drain
 For Top of Slab Spacing

13 - #6 bars @ 2'-0" c/s. Top of Slab
 9' - #4 bars @ 6" c/s. 9"
 Bottom of Slab - Back Bay

All Channels Horizontal

15' - #4 bars @ 6" c/s



10'-2" x 11'-8" x 4'-0" EXT.
 10'-2" x 7'-8" x 4'-0" INT.

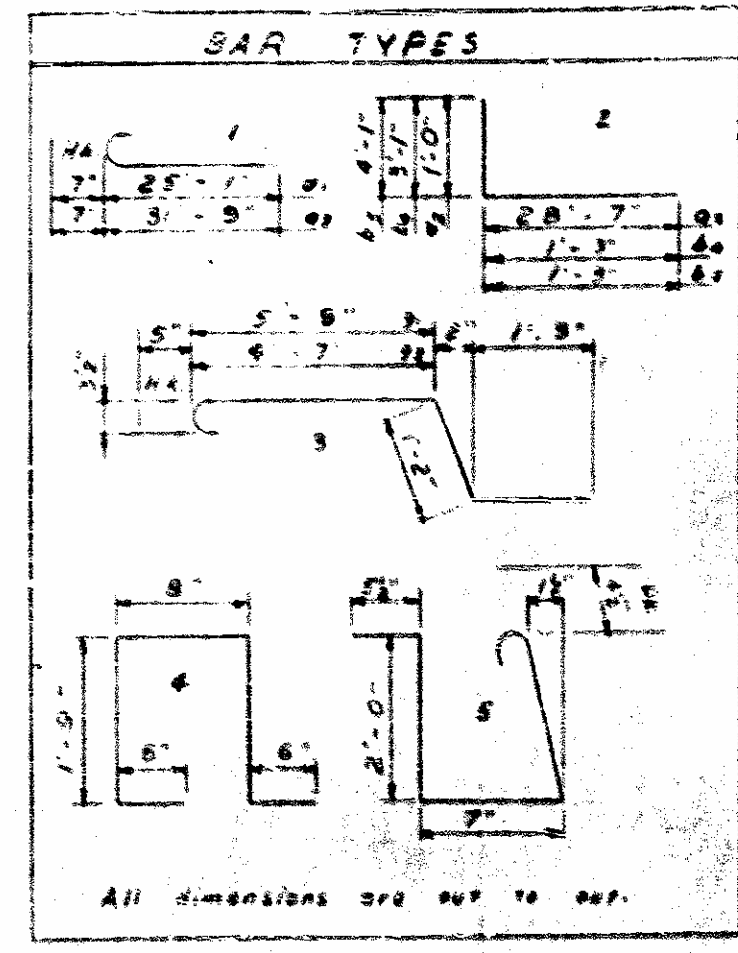
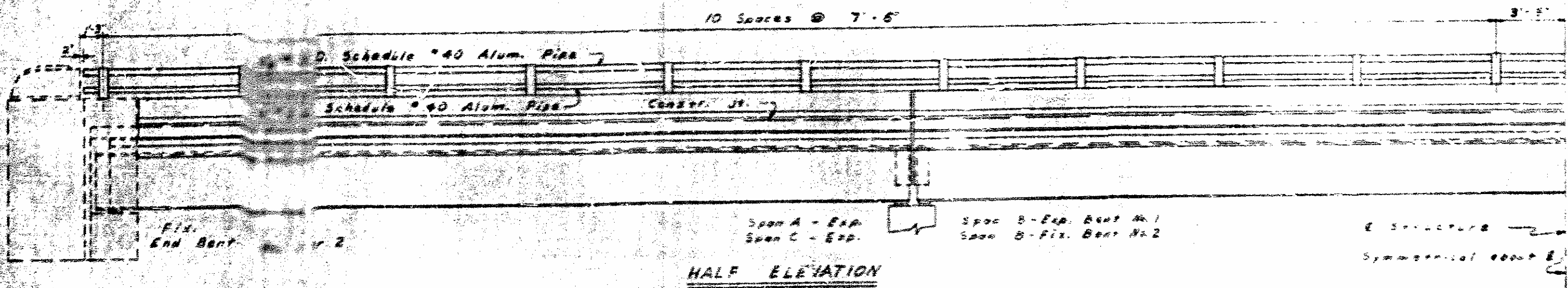
SPAN A C 11"
 SPAN B 5"

TOTAL OF SPAN CONNECTIONS 57,330

PLAN OF BOTTOM FLANGE OF BEAM

MAX. D.L. DEFLECTIONS

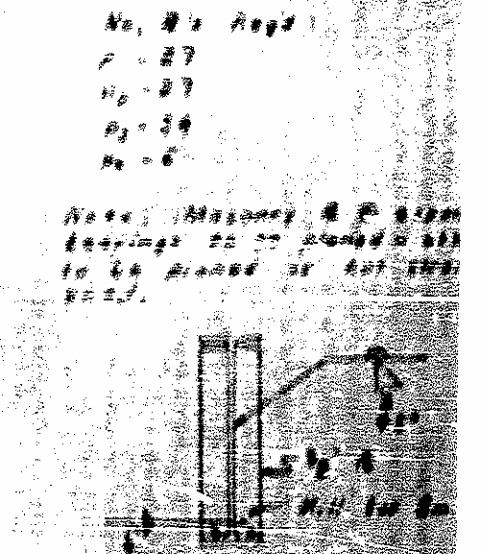
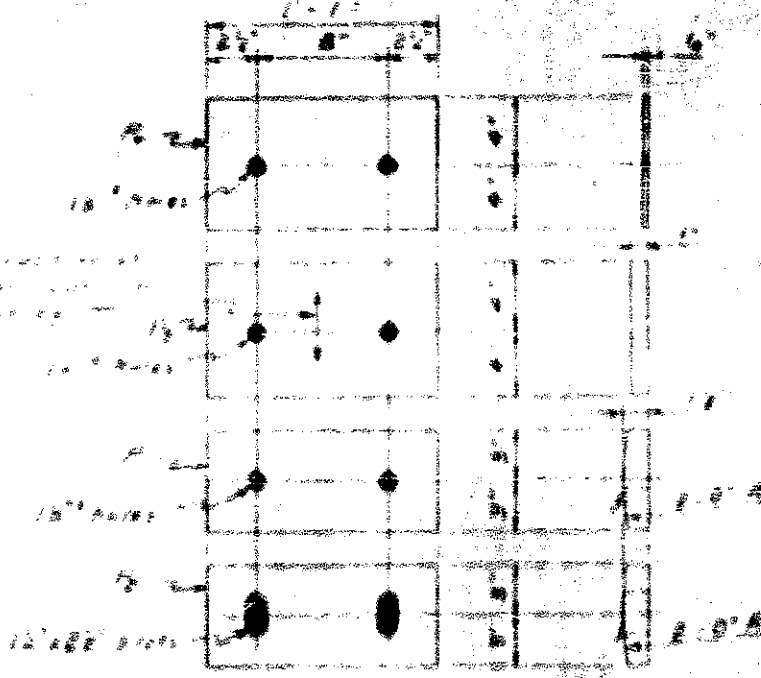
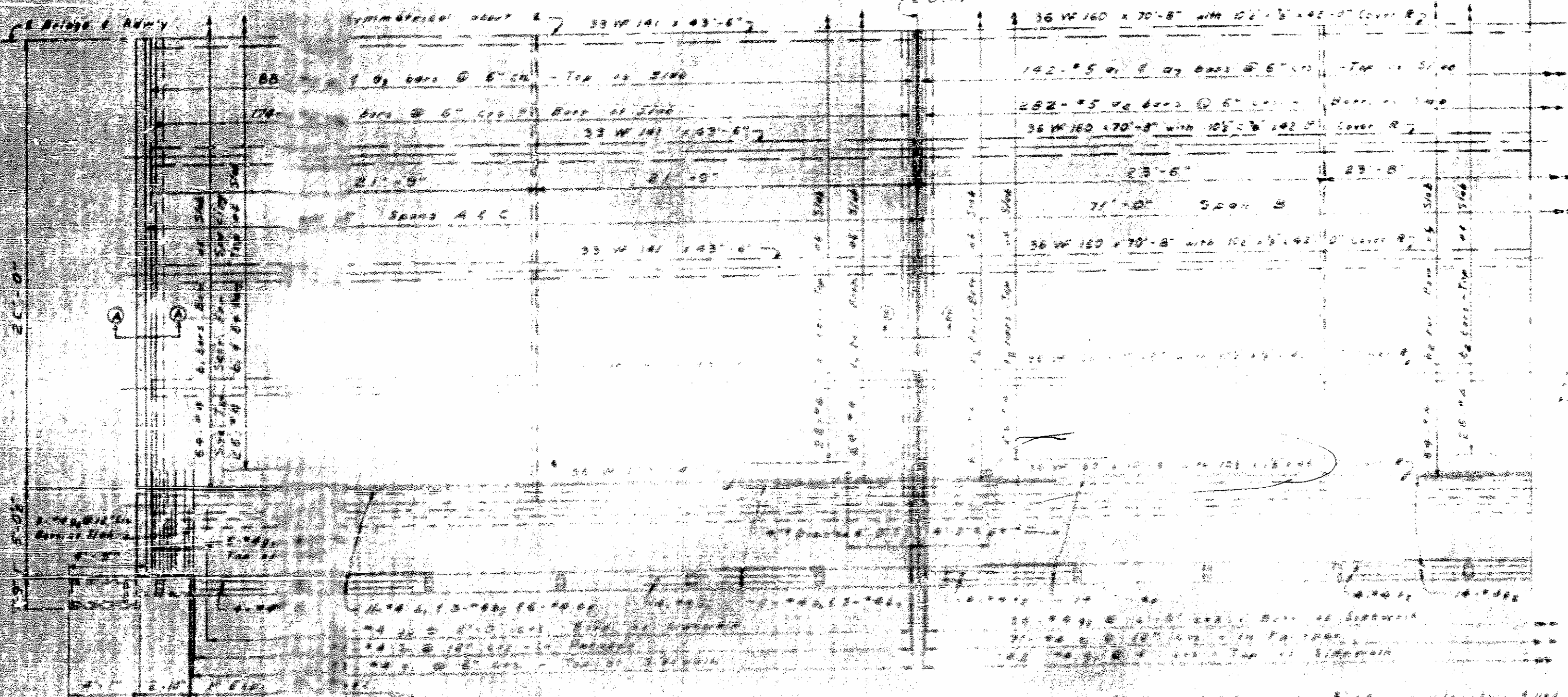
SPAN	DEFLECTION
SPAN A	1/16"
SPAN B	1/16"



BILL OF MATERIAL

Bar	No	Size	Type	Length	Qty
a	210	#8	1	22'-8"	210
b	250	#5	2	29'-7"	500
c	310	#5	1	32'-4"	310
d	440	#4	3/4	22'-0"	1320
e	354	#4	3/4	24'-0"	1062
f	12	#4	3/4	21'-0"	252
g	32	#4	1	0'-0"	32
h	24	#4	1	5'-0"	24
i	32	#4	3/4	21'-0"	1008
j	28	#4	3/4	20'-0"	840
k	616	#4	1	5'-0"	3080
l	150	#4	3/4	21'-0"	3150
m	20	#4	1	7'-0"	140
n	12	#4	3/4	21'-0"	252
o	12	#4	3/4	21'-0"	252
p	12	#4	3/4	21'-0"	252
q	8	#4	3/4	21'-0"	168
r	310	#4	1	5'-0"	1560
s	250	#4	1	1'-5"	250

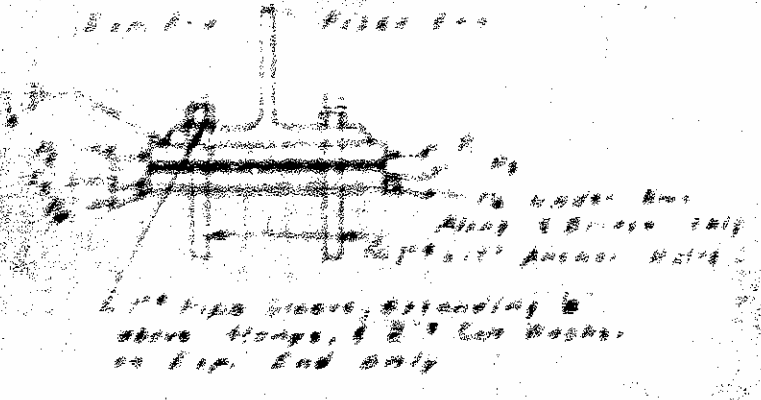
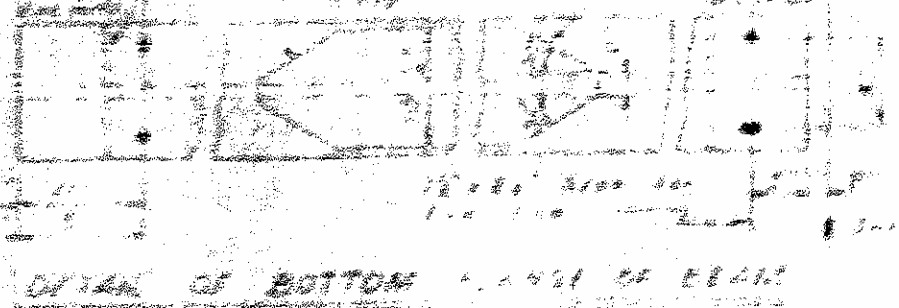
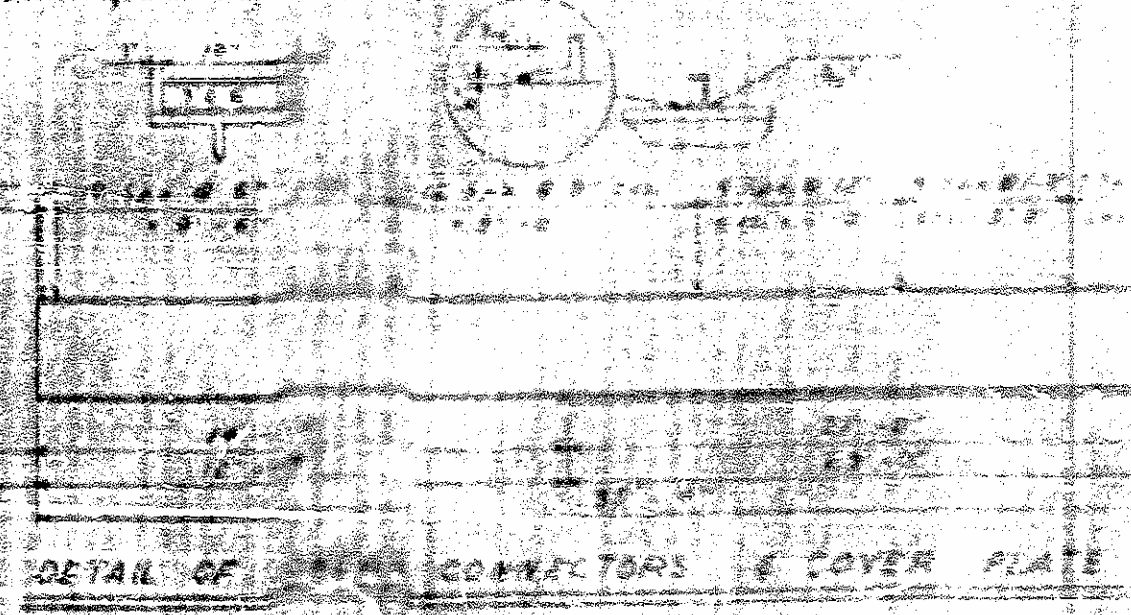
Reinforcing Steel, 100# = 60.0
 Class A Conn. Co. No. = 120.
 Structural Steel, Approx 150# = 200.
 Double Bar Alum. Rail, 100# = 110.



BEARING & FILL IN DETAILS

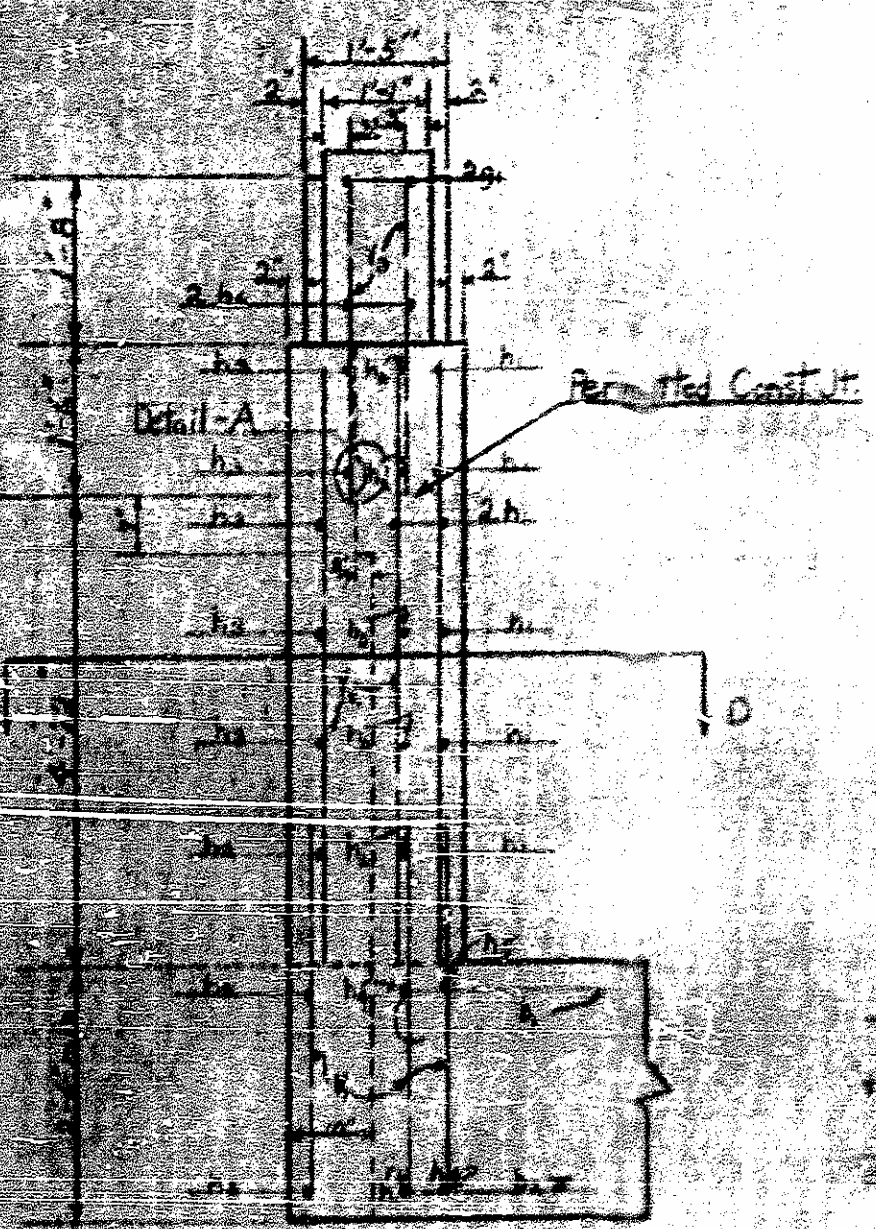
WEB STIFFENER DETAIL

PROJECT NO. 587
 ROCKINGHAM COUNTY
 STATION: 530+86.1

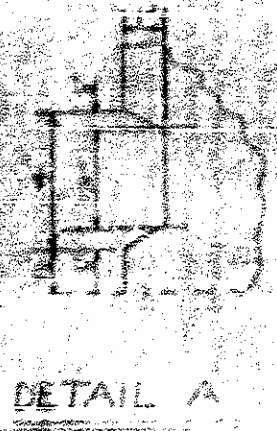


DETAIL THRU BEAM

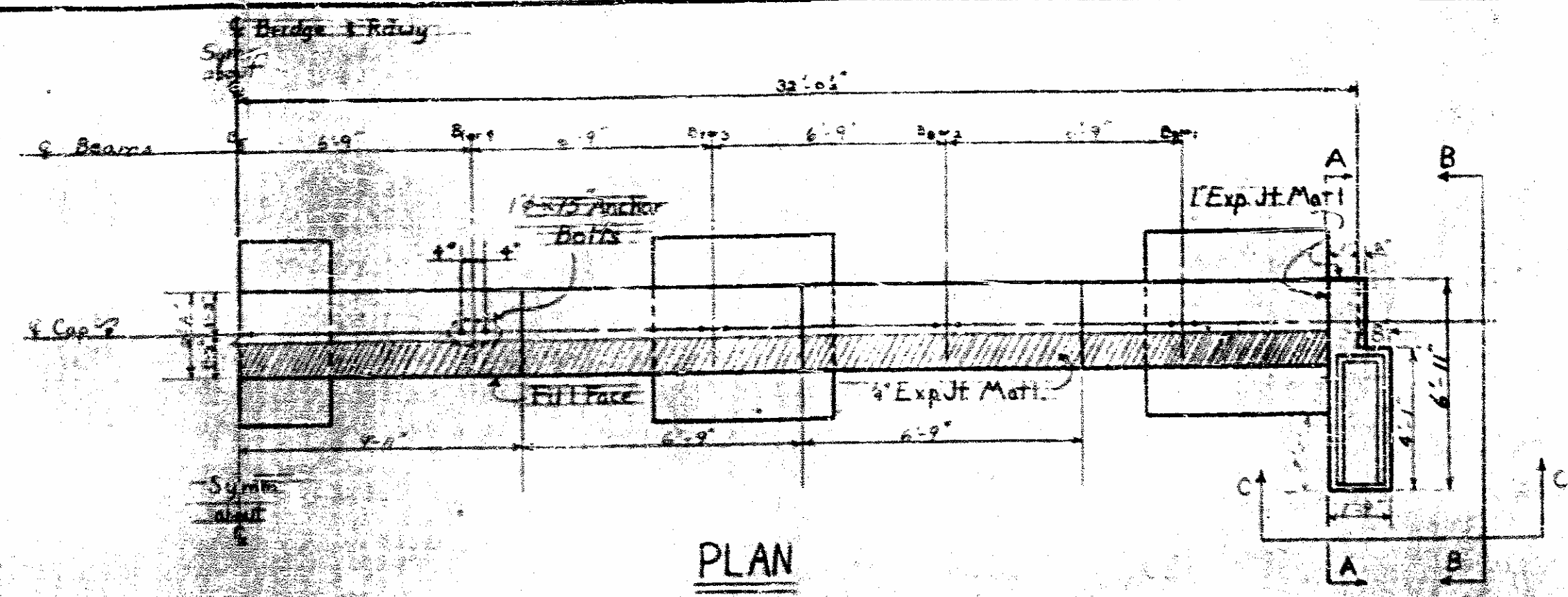
STATE OF NORTH CAROLINA
 STATE HIGHWAY COMMISSION
 SUPERSTRUCTURE
 PLAN & STEEL DETAILS
 ALUM. HANDRAIL - 5' SIDEWALK
 58 ROADWAY
 GETSER 1941



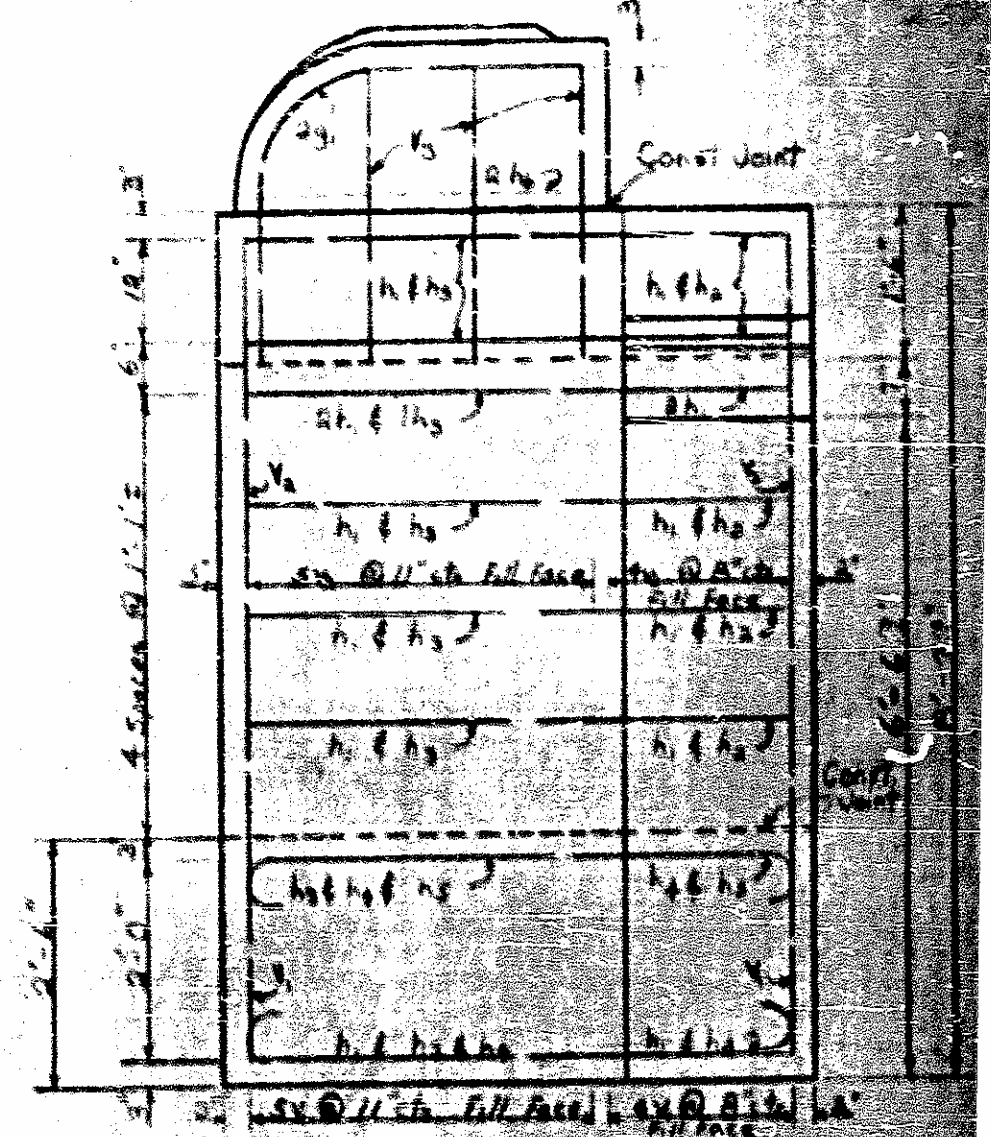
SECTION C-C



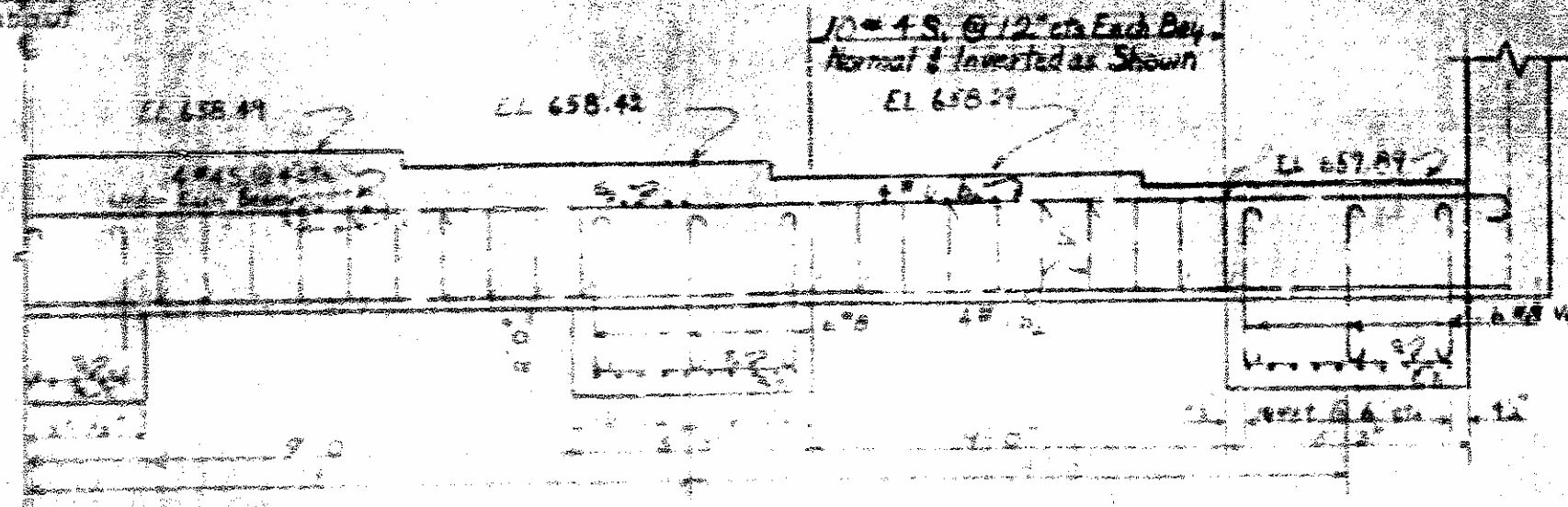
DETAIL A



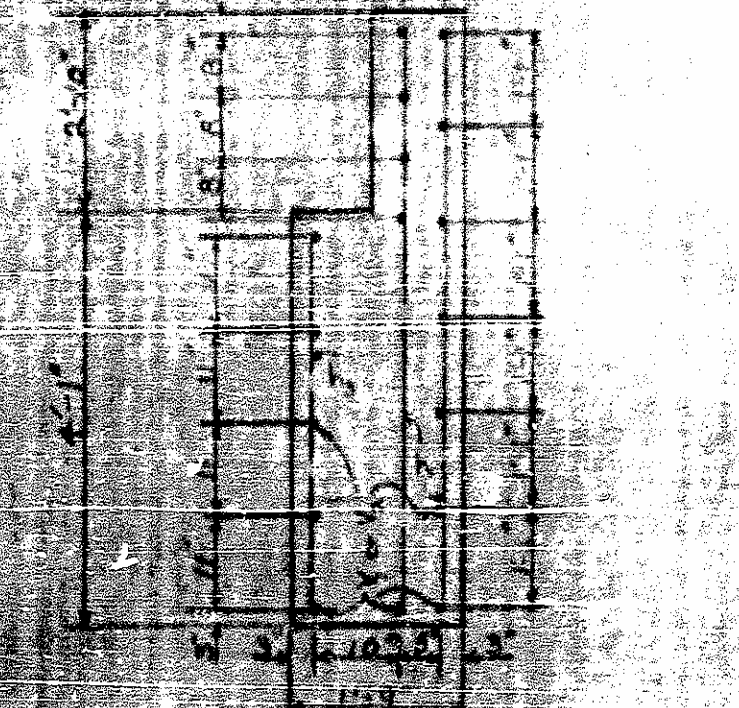
PLAN



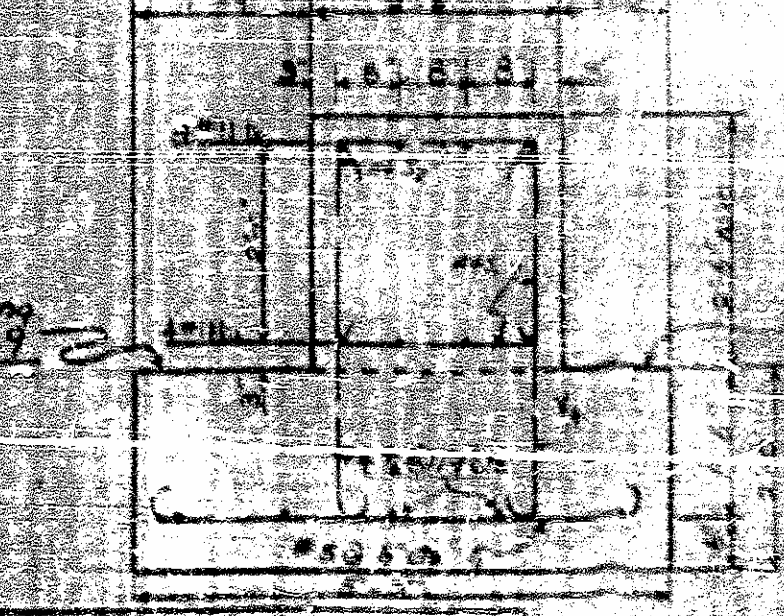
SECTION B-B



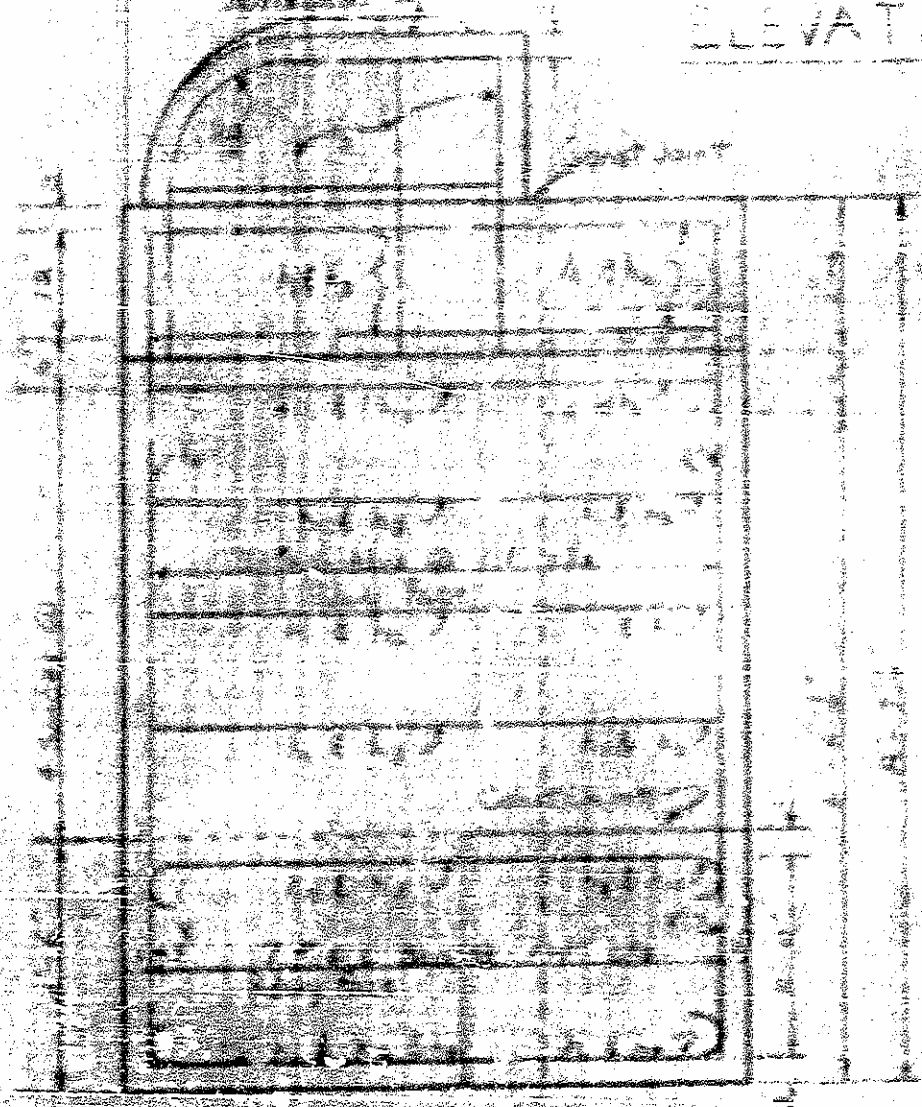
ELEVATION



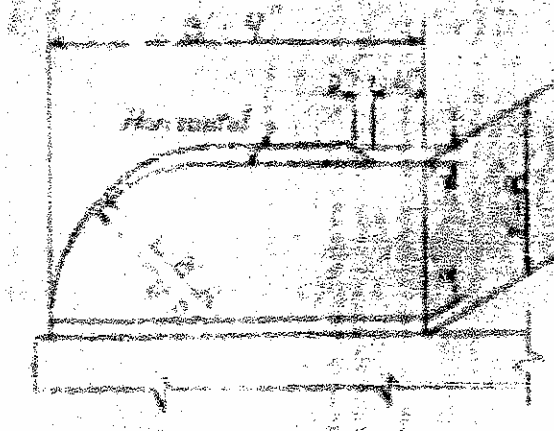
SECTION D-D



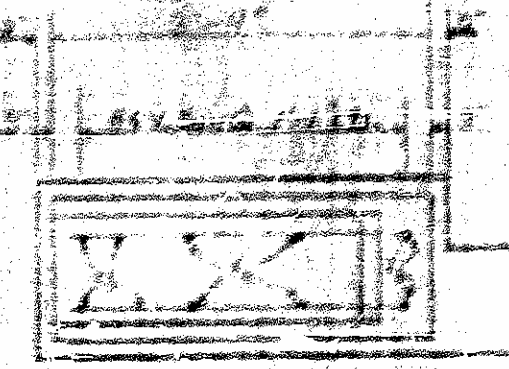
SECTION THRU CAP



SECTION A-A



TOP OF POST ELEVATION



PLAN OF POST

BAR SCHEDULE

BAR TYPES

NO.	DESCRIPTION	QTY.	WEIGHT
1
2
3
4
5
6
7
8
9
10
11
12
13
14
15
16
17
18
19
20
21
22
23
24
25
26
27
28
29
30

All dimensions cut to cut

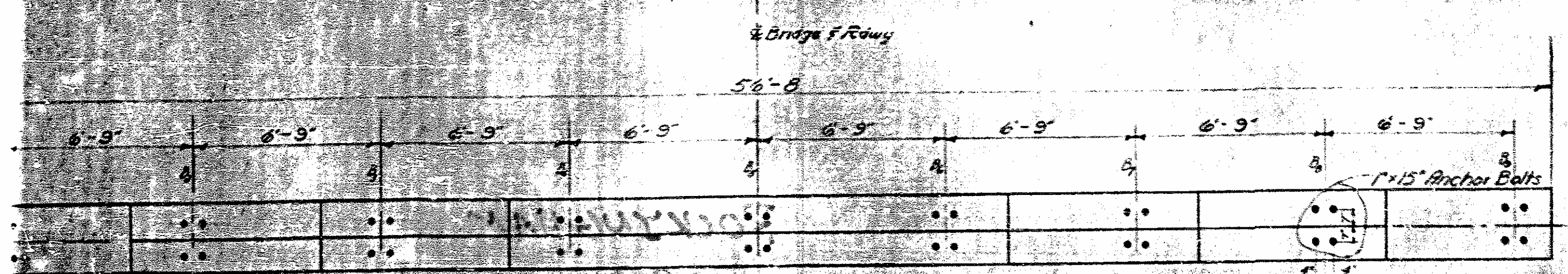
Computed Foundation Load 27 tons per square foot

PROJECT NO. 5890
 ROCKINGHAM COUNTY
 STATION: 530 + 61.1

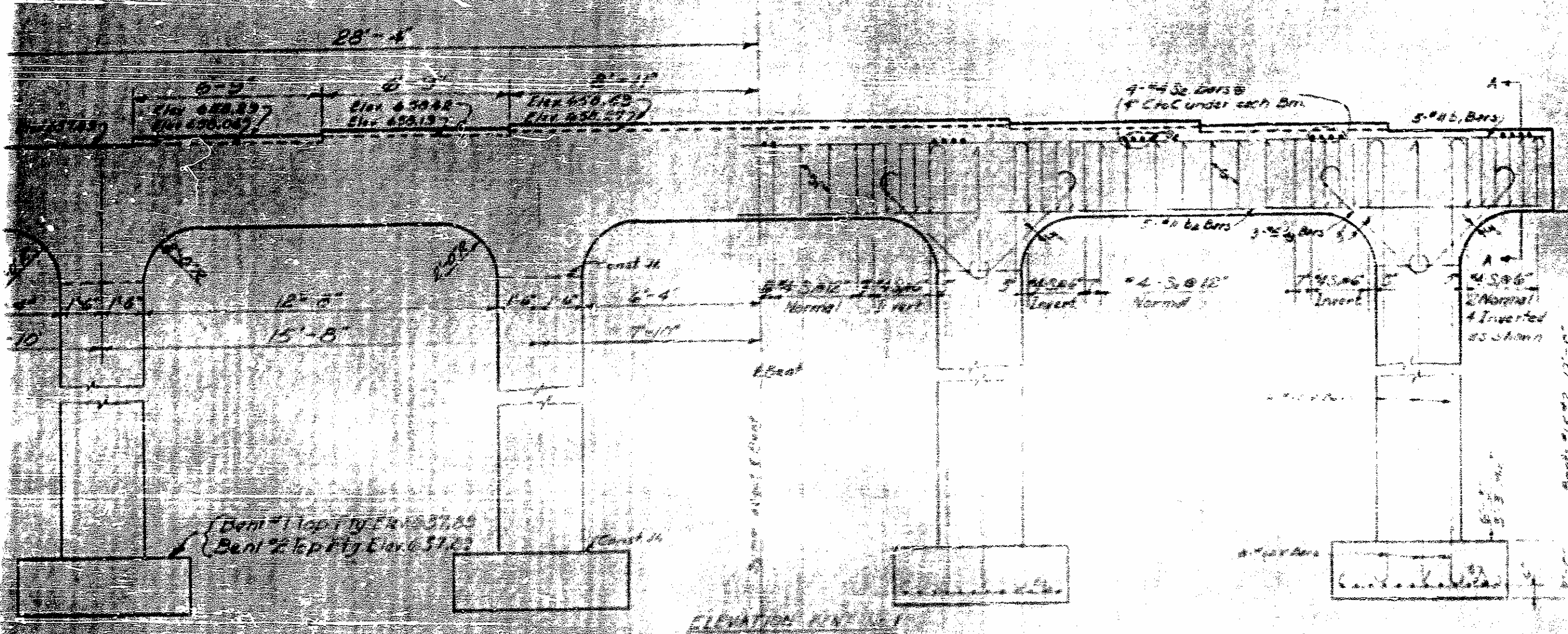
TOTAL BILL OF MATERIAL FOR ONE E.B. TWO REQUIRED
 Reinforcing Steel lbs. 4575
 Clean Concrete cu. yd. 22.7
 Unreinforced Structure Form cu. yd. 100

STATE OF NORTH CAROLINA
 STATE HIGHWAY COMMISSION
 SUBSTRUCTURE
 END BENT NO. 162
 SEPT. 1957

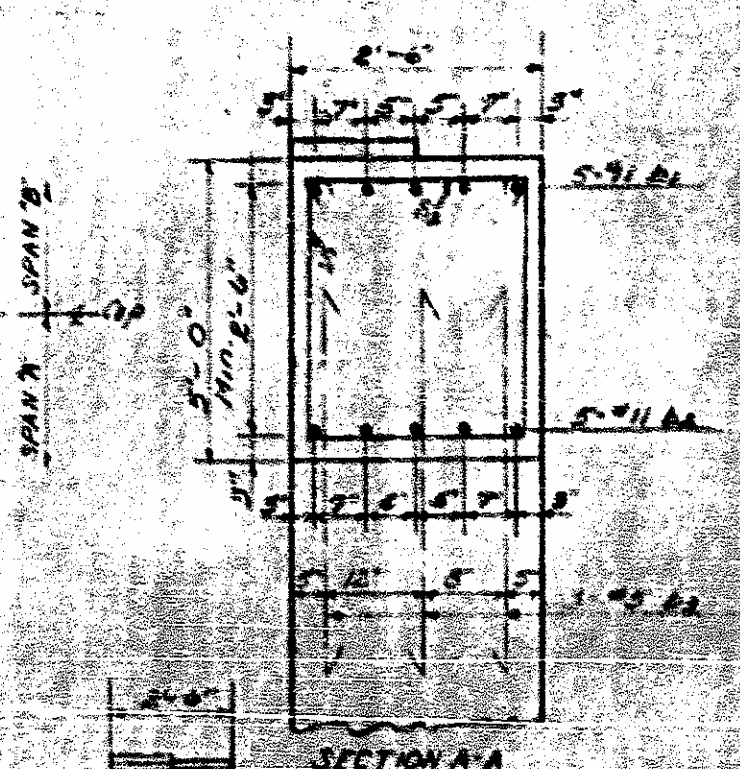
W. H. ...
 W. H. ...



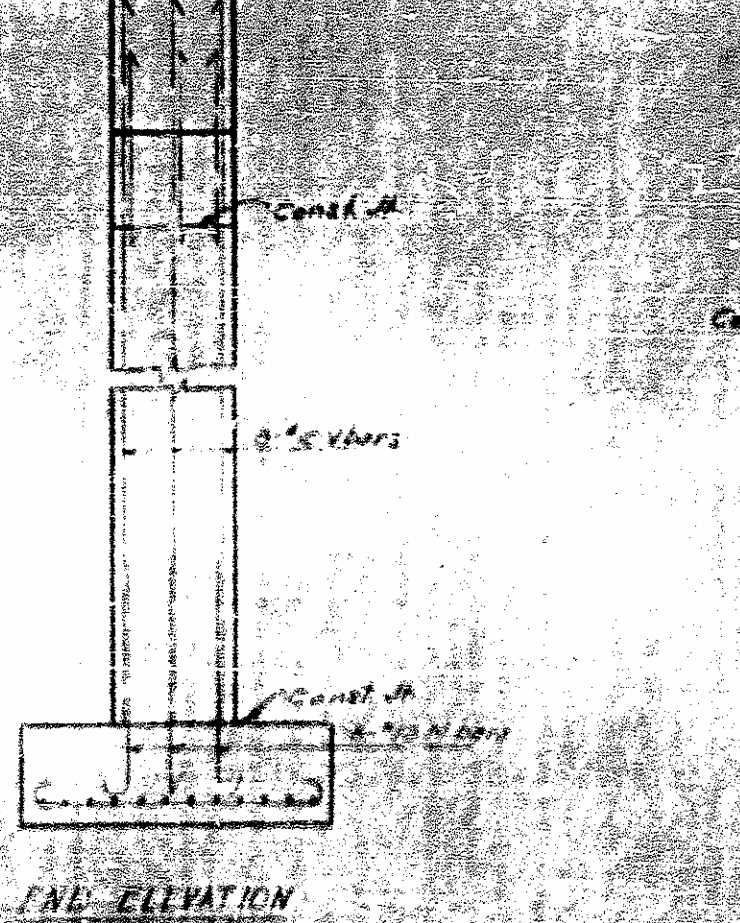
PLAN OF CAP BENT No. 1
 Bent No. 2 Similar by rotation



ELEVATION BENT No. 1



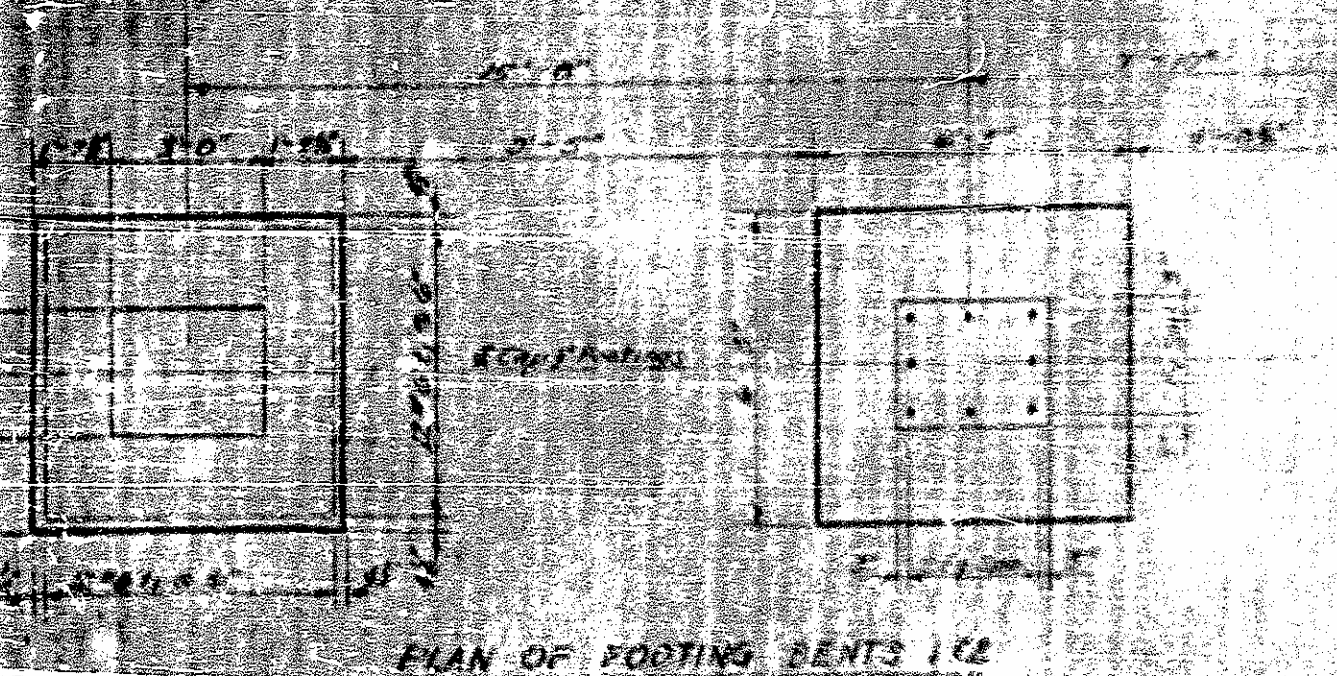
SECTION A-A



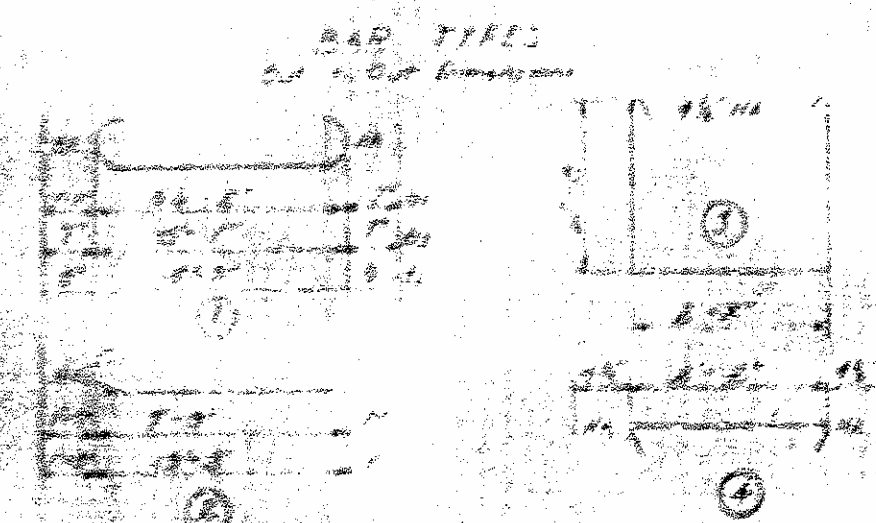
END ELEVATION

BILL OF MATERIAL
 ONE BENT - TWO REQUIRED

Bar	No.	Size	Dist.	Length	Weight
A	8	#4	5'-11 1/2"	27'-0"	100
B	8	#4	5'-11 1/2"	27'-0"	100
C	1	#4	1'-0"	27'-0"	10
D	2	#4	1'-0"	27'-0"	20
E	2	#4	1'-0"	27'-0"	20
F	2	#4	1'-0"	27'-0"	20
G	2	#4	1'-0"	27'-0"	20
H	2	#4	1'-0"	27'-0"	20
I	2	#4	1'-0"	27'-0"	20
J	2	#4	1'-0"	27'-0"	20
K	2	#4	1'-0"	27'-0"	20
L	2	#4	1'-0"	27'-0"	20
M	2	#4	1'-0"	27'-0"	20
N	2	#4	1'-0"	27'-0"	20
O	2	#4	1'-0"	27'-0"	20
P	2	#4	1'-0"	27'-0"	20
Q	2	#4	1'-0"	27'-0"	20
R	2	#4	1'-0"	27'-0"	20
S	2	#4	1'-0"	27'-0"	20
T	2	#4	1'-0"	27'-0"	20
U	2	#4	1'-0"	27'-0"	20
V	2	#4	1'-0"	27'-0"	20
W	2	#4	1'-0"	27'-0"	20
X	2	#4	1'-0"	27'-0"	20
Y	2	#4	1'-0"	27'-0"	20
Z	2	#4	1'-0"	27'-0"	20
Reinforcing Steel				100	100
Concrete				100	100
Unfinished Shutter				100	100



PLAN OF FOOTING BENTS 1 & 2



PROJECT No. 5630
 Rockingham COUNTY
 STATION: 370161

STATE OF NORTH CAROLINA
 STATE HIGHWAY COMMISSION
 STRUCTURE
 BENTS 1 & 2

Sept 1967

W. H. ...