

REVISIONS

MATCHLINE: SEE SHEET E-2

MATCHLINE: SEE SHEET E-2

**SHEET NOTES:**

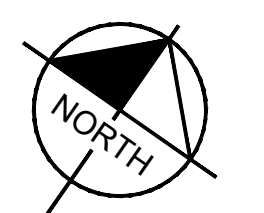
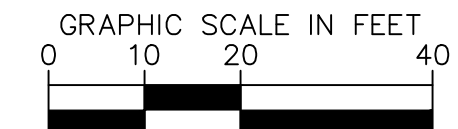
LIGHTING PLAN ASSUMES UTILITY RELOCATION HAS BEEN COMPLETED.

**LIGHTING LEGEND**

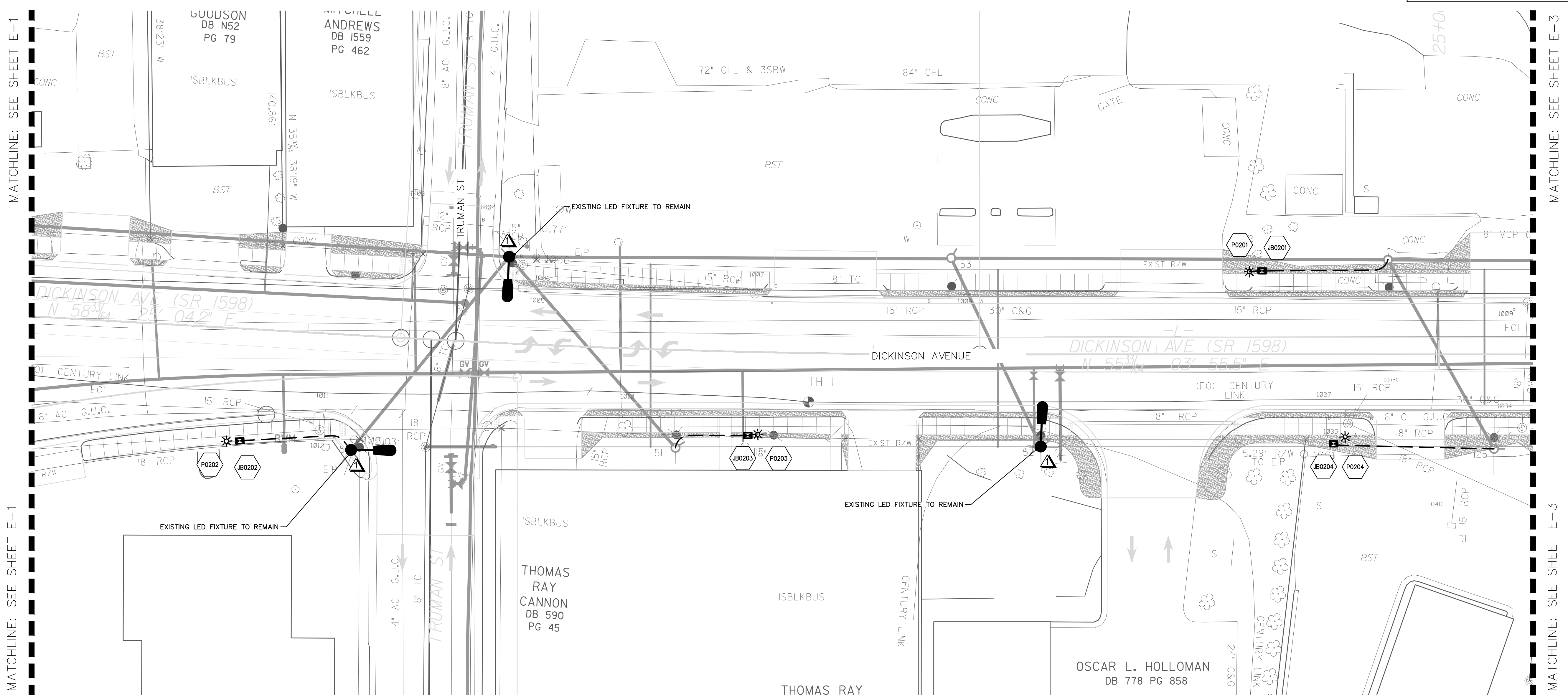
- |  |  |
|--|--|
| 110W GUC LED COBRA HEAD FIXTURE                      | ELECTRICAL CONDUIT (2" UNLESS OTHERWISE NOTED) |
| 100W GUC BLACK DECORATIVE POLE W/LED LANTERN FIXTURE | ELECTRICAL SERVICE ASSEMBLY                    |
| 18" x 24" x 18" TYPE PC JUNCTION BOX                 | DUPLEX RECEPTACLE                              |
| LIGHT FIXTURE, JUNCTION BOX ID                       |  |

**GENERAL NOTES:**

1. THE STANDARD SPECIFICATIONS FOR ROADS AND STRUCTURES DATED JANUARY 2018 OF THE STATE OF NORTH CAROLINA DEPARTMENT OF TRANSPORTATION AND SUPPLEMENTAL SPECIFICATIONS LISTED IN THE BID DOCUMENTS SHALL GOVERN THIS IMPROVEMENT. CONDUIT PATHS ARE SCHEMATIC IN NATURE. CONTRACTOR SHALL ROUTE UNDERGROUND RACEWAYS BEHIND CURB AND TO AVOID CONFLICTS WITH EXISTING AND/OR PROPOSED VALVES, METERS, CATCH BASINS, STREET TREES, ETC. CONTRACTOR TO MINIMIZE DISTURBANCE TO ROADWAY DURING INSTALLATION OF RACEWAYS WHEN NOT CROSSING DRIVES.
2. CONTRACTOR IS RESPONSIBLE FOR REPAIRING OR REPLACING TO THE SATISFACTION OF THE ENGINEER, ALL DAMAGE TO CURBS, UNDERDRAINS, DRIVES, BUILDINGS, ETC. CAUSED BY THE INSTALLATION OF NEW WORK.
3. CONTRACTOR TO STUB CONDUIT UP APPROXIMATELY 3' IN FRONT OR BACK OF THE LIGHT POLE LOCATIONS TO PROVIDE ADEQUATE SPACE FOR JUNCTION BOXES. LIGHT FIXTURES TO BE INSTALLED BY GREENVILLE UTILITIES (GUC) AT A LATER DATE.
4. UNDERGROUND CONDUITS ARE 2" PVC CONDUIT. INSTALL PULL LINE INSIDE CONDUIT.
5. JUNCTION BOXES ARE 18" (W) x 24" (L) x 18" (D).
6. LIGHTING LAYOUT SHOWN ASSUMES UTILITY RELOCATION COMPLETE.







REVISIONS

MATCHLINE: SEE SHEET E-1

MATCHLINE: SEE SHEET E-1

MATCHLINE: SEE SHEET E-3

MATCHLINE: SEE SHEET E-3

**SHEET NOTES:**

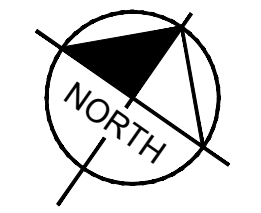
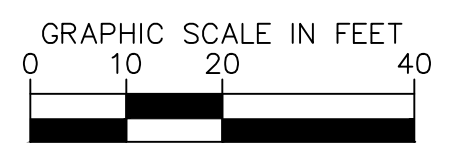
LIGHTING PLAN ASSUMES UTILITY RELOCATION HAS BEEN COMPLETED.

**LIGHTING LEGEND**

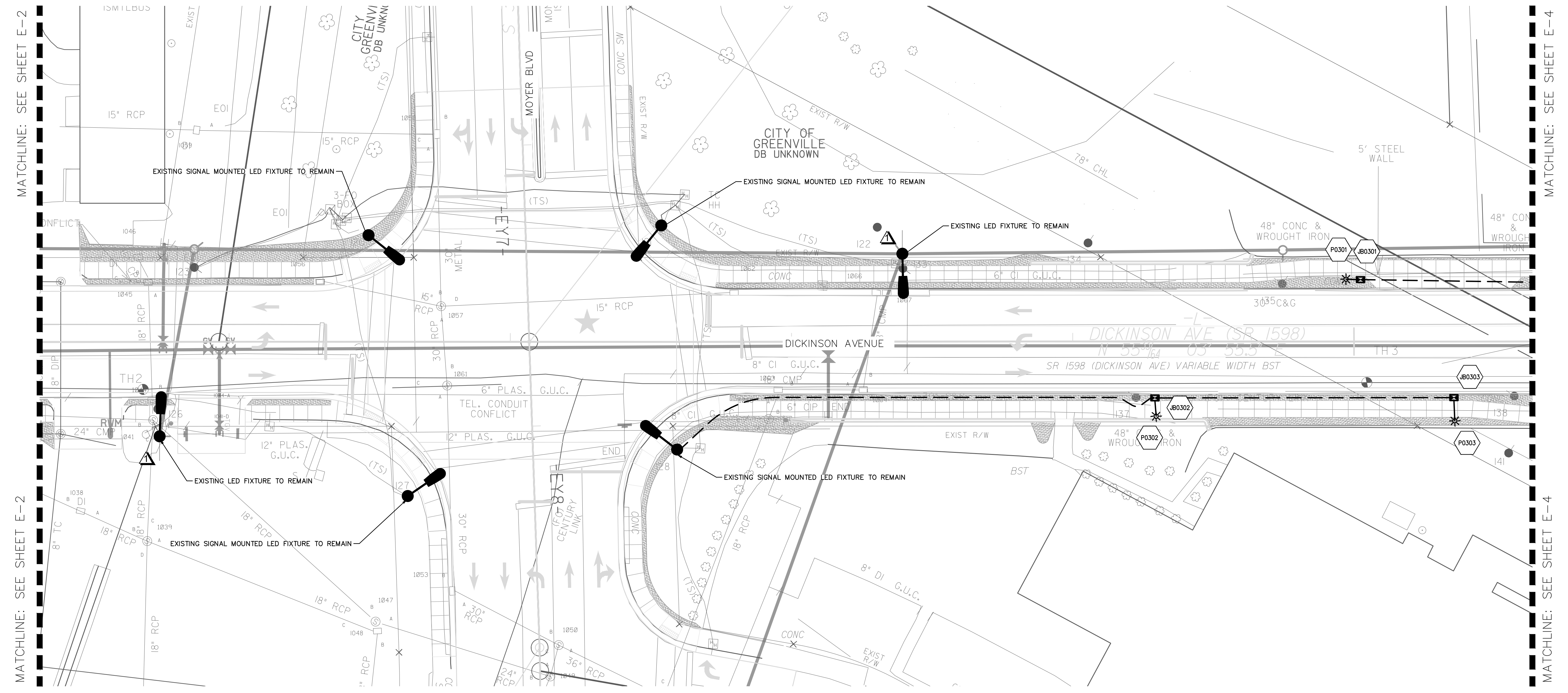
- 110W GUC LED COBRA HEAD FIXTURE
- 100W GUC BLACK DECORATIVE POLE W/LED LANTERN FIXTURE
- 18" x 24" x 18" TYPE PC JUNCTION BOX
- LIGHT FIXTURE, JUNCTION BOX ID
- ELECTRICAL CONDUIT (2" UNLESS OTHERWISE NOTED)
- ELECTRICAL SERVICE ASSEMBLY
- DUPLEX RECEPTACLE

**GENERAL NOTES:**

1. THE STANDARD SPECIFICATIONS FOR ROADS AND STRUCTURES DATED JANUARY 2018 OF THE STATE OF NORTH CAROLINA DEPARTMENT OF TRANSPORTATION AND SUPPLEMENTAL SPECIFICATIONS LISTED IN THE BID DOCUMENTS SHALL GOVERN THIS IMPROVEMENT.
2. CONDUIT PATHS ARE SCHEMATIC IN NATURE. CONTRACTOR SHALL ROUTE UNDERGROUND RACEWAYS BEHIND CURB AND TO AVOID CONFLICTS WITH EXISTING AND/OR PROPOSED VALVES, METERS, CATCH BASINS, STREET TREES, ETC. CONTRACTOR TO MINIMIZE DISTURBANCE TO ROADWAY DURING INSTALLATION OF RACEWAYS WHEN NOT CROSSING DRIVES.
3. CONTRACTOR IS RESPONSIBLE FOR REPAIRING OR REPLACING TO THE SATISFACTION OF THE ENGINEER. ALL DAMAGE TO CURBS, UNDERDRAINS, DRIVES, BUILDINGS, ETC. CAUSED BY THE INSTALLATION OF NEW WORK.
4. CONTRACTOR TO STUB CONDUIT UP APPROXIMATELY 3' IN FRONT OR BACK OF THE LIGHT POLE LOCATIONS TO PROVIDE ADEQUATE SPACE FOR JUNCTION BOXES. LIGHT FIXTURES TO BE INSTALLED BY GREENVILLE UTILITIES (GUC) AT A LATER DATE.
5. UNDERGROUND CONDUITS ARE 2" PVC CONDUIT. INSTALL PULL LINE INSIDE CONDUIT.
6. JUNCTION BOXES ARE 18" (W) x 24" (L) x 18" (D).
7. LIGHTING LAYOUT SHOWN ASSUMES UTILITY RELOCATION COMPLETE.







REVISIONS

MATCHLINE: SEE SHEET E-2

MATCHLINE: SEE SHEET E-2

MATCHLINE: SEE SHEET E-4

MATCHLINE: SEE SHEET E-4

**SHEET NOTES:**

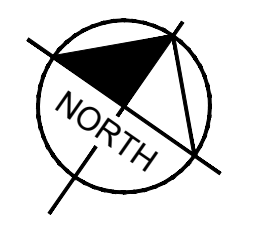
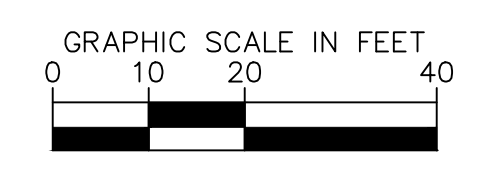
LIGHTING PLAN ASSUMES UTILITY RELOCATION HAS BEEN COMPLETED.

**LIGHTING LEGEND**

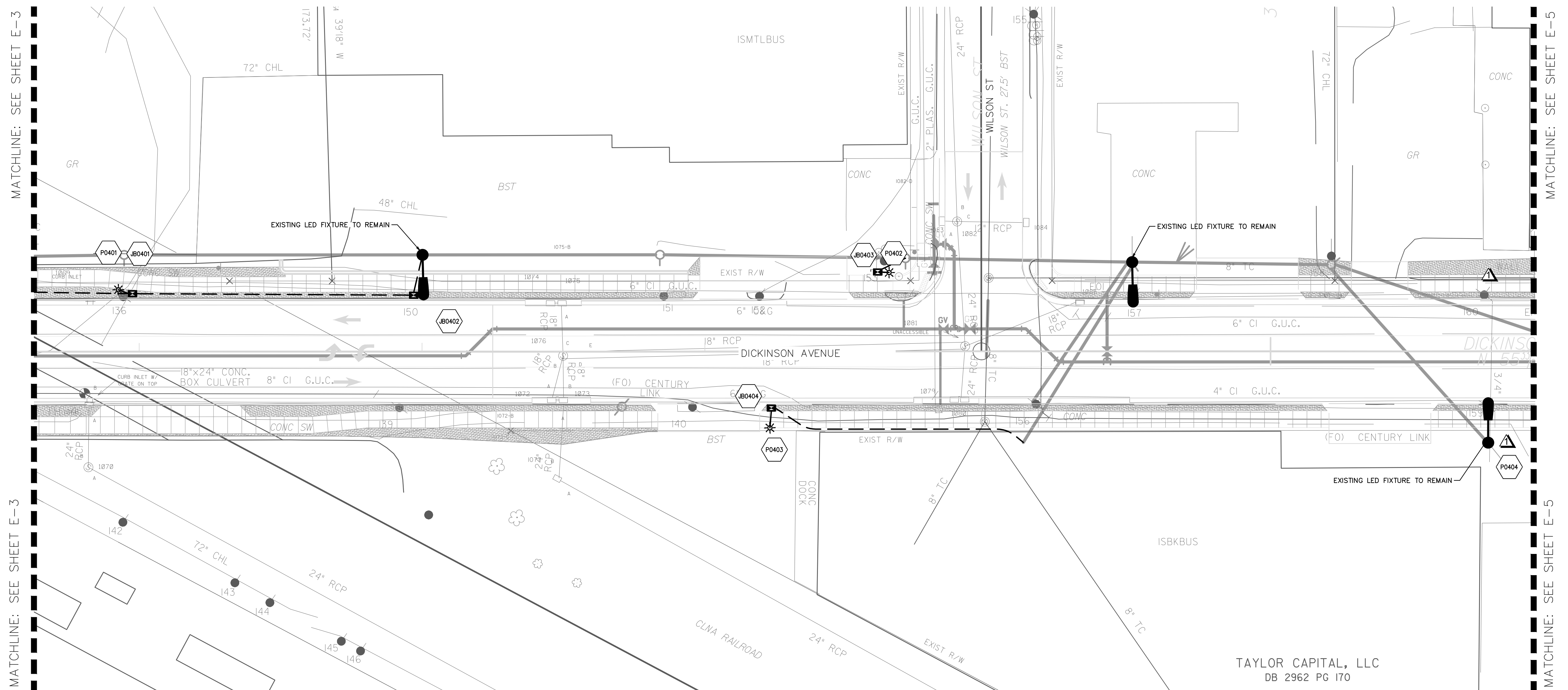
- 110W GUC LED COBRA HEAD FIXTURE
- 100W GUC BLACK DECORATIVE POLE W/LED LANTERN FIXTURE
- 18" x 24" x 18" TYPE PC JUNCTION BOX
- LIGHT FIXTURE, JUNCTION BOX ID
- ELECTRICAL CONDUIT (2" UNLESS OTHERWISE NOTED)
- ELECTRICAL SERVICE ASSEMBLY
- DUPLEX RECEPTACLE

**GENERAL NOTES:**

1. THE STANDARD SPECIFICATIONS FOR ROADS AND STRUCTURES DATED JANUARY 2018 OF THE STATE OF NORTH CAROLINA DEPARTMENT OF TRANSPORTATION AND SUPPLEMENTAL SPECIFICATIONS LISTED IN THE BID DOCUMENTS SHALL GOVERN THIS IMPROVEMENT.
2. CONDUIT PATHS ARE SCHEMATIC IN NATURE. CONTRACTOR SHALL ROUTE UNDERGROUND RACEWAYS BEHIND CURB AND TO AVOID CONFLICTS WITH EXISTING AND/OR PROPOSED VALVES, METERS, CATCH BASINS, STREET TREES, ETC. CONTRACTOR TO MINIMIZE DISTURBANCE TO ROADWAY DURING INSTALLATION OF RACEWAYS WHEN NOT CROSSING DRIVES.
3. CONTRACTOR IS RESPONSIBLE FOR REPAIRING OR REPLACING TO THE SATISFACTION OF THE ENGINEER. ALL DAMAGE TO CURBS, UNDERDRAINS, DRIVES, BUILDINGS, ETC. CAUSED BY THE INSTALLATION OF NEW WORK.
4. CONTRACTOR TO STUB CONDUIT UP APPROXIMATELY 3' IN FRONT OR BACK OF THE LIGHT POLE LOCATIONS TO PROVIDE ADEQUATE SPACE FOR JUNCTION BOXES. LIGHT FIXTURES TO BE INSTALLED BY GREENVILLE UTILITIES (GUC) AT A LATER DATE.
5. UNDERGROUND CONDUITS ARE 2" PVC CONDUIT. INSTALL PULL LINE INSIDE CONDUIT.
6. JUNCTION BOXES ARE 18" (W) x 24" (L) x 18" (D).
7. LIGHTING LAYOUT SHOWN ASSUMES UTILITY RELOCATION COMPLETE.







REVISIONS

MATCHLINE: SEE SHEET E-3

MATCHLINE: SEE SHEET E-3

MATCHLINE: SEE SHEET E-5

MATCHLINE: SEE SHEET E-5

**SHEET NOTES:**

CONTRACTOR TO VERIFY EXISTING LED FIXTURE RELOCATED TO UTILITY POLE LOCATION. LIGHTING PLAN ASSUMES FIXTURE AND POLE RELOCATED BY GUC.

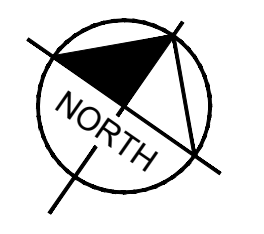
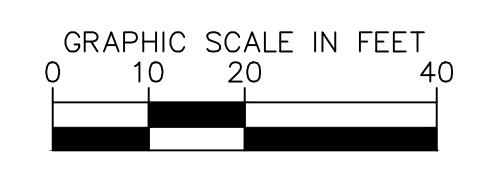
**LIGHTING LEGEND**

- 110W GUC LED COBRA HEAD FIXTURE
- 100W GUC BLACK DECORATIVE POLE W/LED LANTERN FIXTURE
- 18" x 24" x 18" TYPE PC JUNCTION BOX
- LIGHT FIXTURE, JUNCTION BOX ID
- ELECTRICAL CONDUIT (2" UNLESS OTHERWISE NOTED)
- ELECTRICAL SERVICE ASSEMBLY
- DUPLEX RECEPTACLE

**GENERAL NOTES:**

- THE STANDARD SPECIFICATIONS FOR ROADS AND STRUCTURES DATED JANUARY 2018 OF THE STATE OF NORTH CAROLINA DEPARTMENT OF TRANSPORTATION AND SUPPLEMENTAL SPECIFICATIONS LISTED IN THE BID DOCUMENTS SHALL GOVERN THIS IMPROVEMENT.
- CONDUIT PATHS ARE SCHEMATIC IN NATURE. CONTRACTOR SHALL ROUTE UNDERGROUND RACEWAYS BEHIND CURB AND TO AVOID CONFLICTS WITH EXISTING AND/OR PROPOSED VALVES, METERS, CATCH BASINS, STREET TREES, ETC. CONTRACTOR TO MINIMIZE DISTURBANCE TO ROADWAY DURING INSTALLATION OF RACEWAYS WHEN NOT CROSSING DRIVES.
- CONTRACTOR IS RESPONSIBLE FOR REPAIRING OR REPLACING TO THE SATISFACTION OF THE ENGINEER. ALL DAMAGE TO CURBS, UNDERDRAINS, DRIVES, BUILDINGS, ETC. CAUSED BY THE INSTALLATION OF NEW WORK.
- CONTRACTOR TO STUB CONDUIT UP APPROXIMATELY 3' IN FRONT OR BACK OF THE LIGHT POLE LOCATIONS TO PROVIDE ADEQUATE SPACE FOR JUNCTION BOXES. LIGHT FIXTURES TO BE INSTALLED BY GREENVILLE UTILITIES (GUC) AT A LATER DATE.
- UNDERGROUND CONDUITS ARE 2" PVC CONDUIT. INSTALL PULL LINE INSIDE CONDUIT.
- JUNCTION BOXES ARE 18" (W) x 24" (L) x 18" (D).
- LIGHTING LAYOUT SHOWN ASSUMES UTILITY RELOCATION COMPLETE.

TAYLOR CAPITAL, LLC  
DB 2962 PG 170





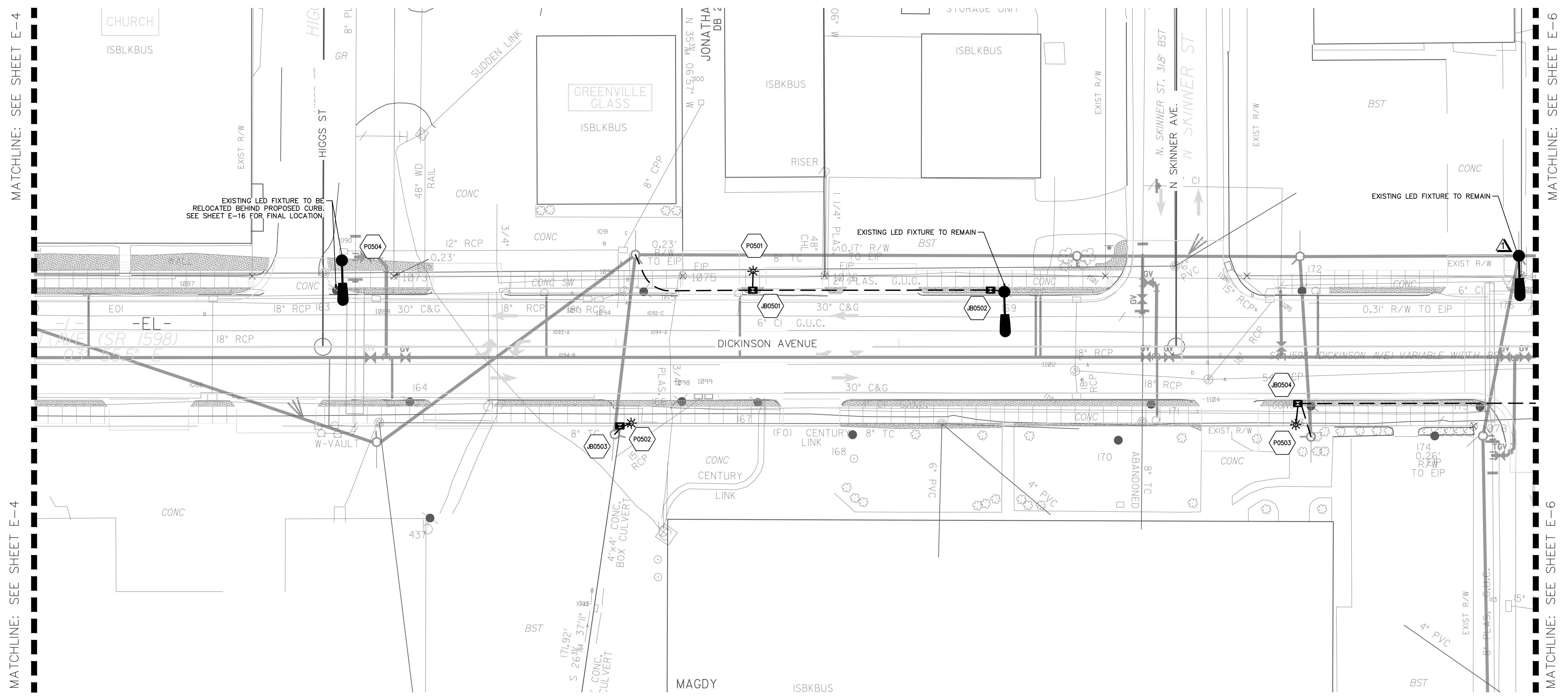
**Kimley»Horn**  
 421 FAYETTEVILLE STREET, SUITE 600  
 RALEIGH, NC 27601

PROJECT REFERENCE NO. U-5606  
 SHEET NO. E-5  
 SHEET TITLE: STREET LIGHTING PLAN

DocuSigned by:  
 Jon S. Chambers  
 2/10/2022

NORTH CAROLINA PROFESSIONAL SEAL 027615 ENGINEER JON S. CHAMBERS

**DOCUMENT NOT CONSIDERED FINAL  
 UNLESS ALL SIGNATURES COMPLETED**



MATCHLINE: SEE SHEET E-4

MATCHLINE: SEE SHEET E-4

MATCHLINE: SEE SHEET E-6

MATCHLINE: SEE SHEET E-6

REVISIONS

**SHEET NOTES:**

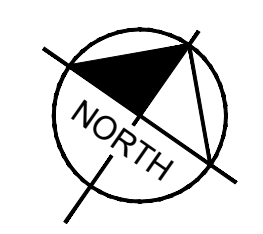
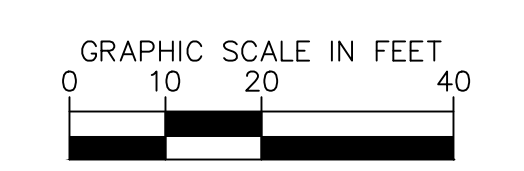
▲ LIGHTING PLAN ASSUMES UTILITY RELOCATION HAS BEEN COMPLETED.

**LIGHTING LEGEND**

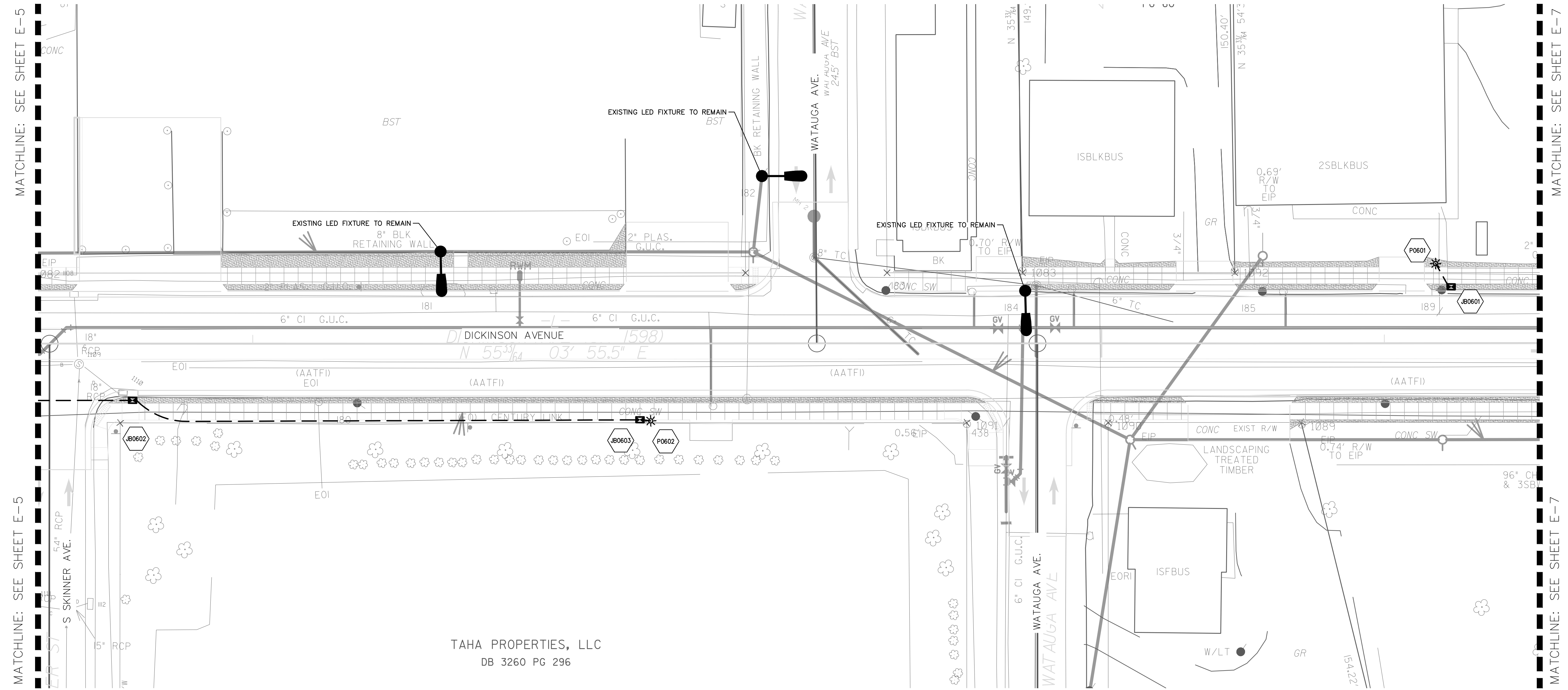
- 110W GUC LED COBRA HEAD FIXTURE
- ☀ 100W GUC BLACK DECORATIVE POLE W/LED LANTERN FIXTURE
- ⊠ 18" x 24" x 18" TYPE PC JUNCTION BOX
- ⬡ LIGHT FIXTURE, JUNCTION BOX ID
- 2" ELECTRICAL CONDUIT (2" UNLESS OTHERWISE NOTED)
- ⓔ ELECTRICAL SERVICE ASSEMBLY
- Ⓜ DUPLEX RECEPTACLE

**GENERAL NOTES:**

1. THE STANDARD SPECIFICATIONS FOR ROADS AND STRUCTURES DATED JANUARY 2018 OF THE STATE OF NORTH CAROLINA DEPARTMENT OF TRANSPORTATION AND SUPPLEMENTAL SPECIFICATIONS LISTED IN THE BID DOCUMENTS SHALL GOVERN THIS IMPROVEMENT.
2. CONDUIT PATHS ARE SCHEMATIC IN NATURE. CONTRACTOR SHALL ROUTE UNDERGROUND RACEWAYS BEHIND CURB AND TO AVOID CONFLICTS WITH EXISTING AND/OR PROPOSED VALVES, METERS, CATCH BASINS, STREET TREES, ETC. CONTRACTOR TO MINIMIZE DISTURBANCE TO ROADWAY DURING INSTALLATION OF RACEWAYS WHEN NOT CROSSING DRIVES.
3. CONTRACTOR IS RESPONSIBLE FOR REPAIRING OR REPLACING TO THE SATISFACTION OF THE ENGINEER. ALL DAMAGE TO CURBS, UNDERDRAINS, DRIVES, BUILDINGS, ETC. CAUSED BY THE INSTALLATION OF NEW WORK.
4. CONTRACTOR TO STUB CONDUIT UP APPROXIMATELY 3' IN FRONT OR BACK OF THE LIGHT POLE LOCATIONS TO PROVIDE ADEQUATE SPACE FOR JUNCTION BOXES. LIGHT FIXTURES TO BE INSTALLED BY GREENVILLE UTILITIES (GUC) AT A LATER DATE.
5. UNDERGROUND CONDUITS ARE 2" PVC CONDUIT. INSTALL PULL LINE INSIDE CONDUIT.
6. JUNCTION BOXES ARE 18" (W) x 24" (L) x 18" (D).
7. LIGHTING LAYOUT SHOWN ASSUMES UTILITY RELOCATION COMPLETE.







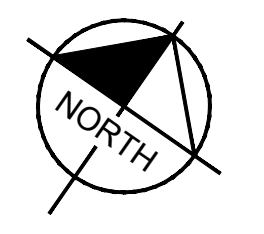
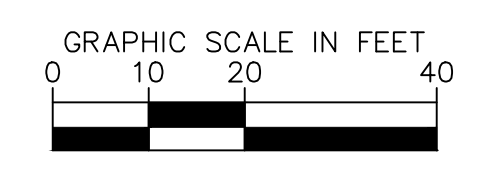
REVISIONS

**LIGHTING LEGEND**

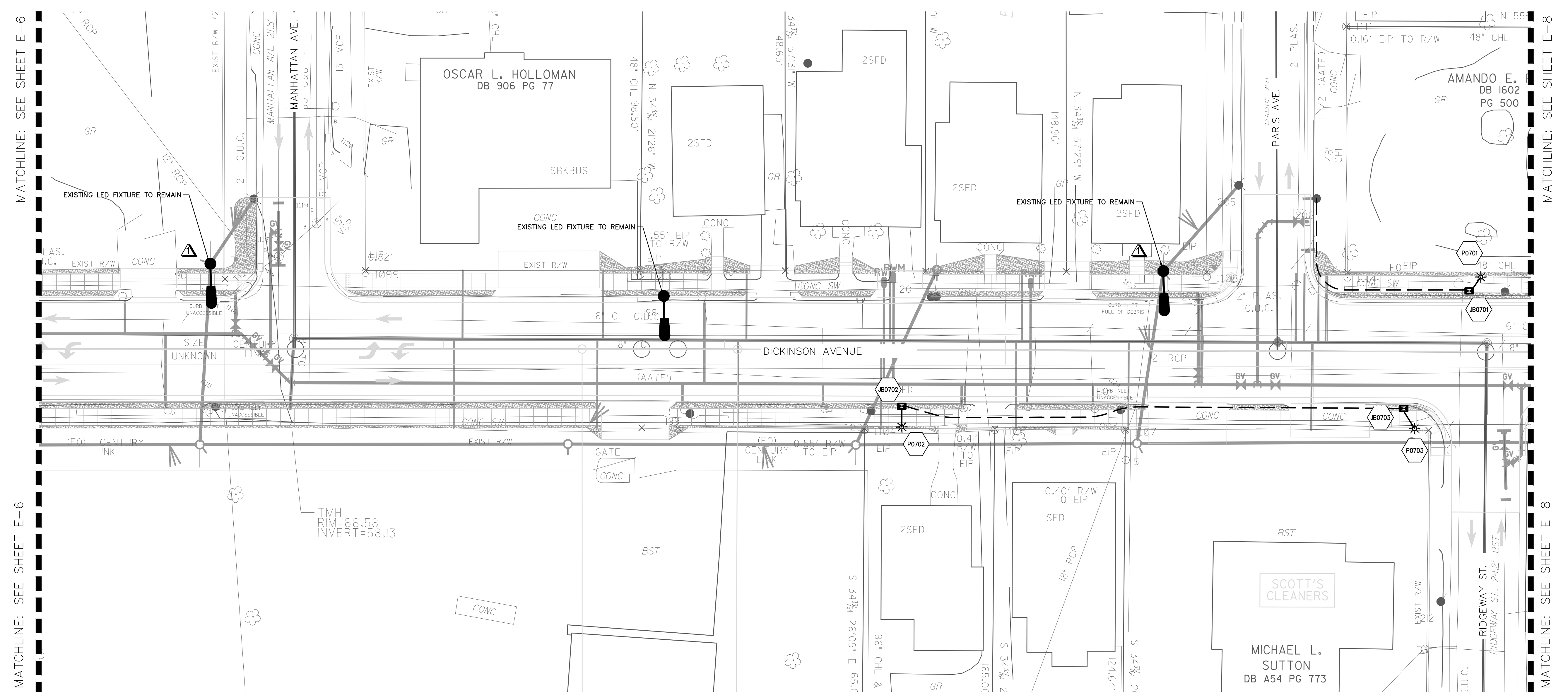
- |  |  |  |  |
|--|--|--|--|
|  | 110W GUC LED COBRA HEAD FIXTURE                      |  | ELECTRICAL CONDUIT (2" UNLESS OTHERWISE NOTED) |
|  | 100W GUC BLACK DECORATIVE POLE W/LED LANTERN FIXTURE |  | ELECTRICAL SERVICE ASSEMBLY                    |
|  | 18" x 24" x 18" TYPE PC JUNCTION BOX                 |  | DUPLEX RECEPTACLE                              |
|  | LIGHT FIXTURE, JUNCTION BOX ID                       |  |  |

**GENERAL NOTES:**

1. THE STANDARD SPECIFICATIONS FOR ROADS AND STRUCTURES DATED JANUARY 2018 OF THE STATE OF NORTH CAROLINA DEPARTMENT OF TRANSPORTATION AND SUPPLEMENTAL SPECIFICATIONS LISTED IN THE BID DOCUMENTS SHALL GOVERN THIS IMPROVEMENT.
2. CONDUIT PATHS ARE SCHEMATIC IN NATURE. CONTRACTOR SHALL ROUTE UNDERGROUND RACEWAYS BEHIND CURB AND TO AVOID CONFLICTS WITH EXISTING AND/OR PROPOSED VALVES, METERS, CATCH BASINS, STREET TREES, ETC. CONTRACTOR TO MINIMIZE DISTURBANCE TO ROADWAY DURING INSTALLATION OF RACEWAYS WHEN NOT CROSSING DRIVES.
3. CONTRACTOR IS RESPONSIBLE FOR REPAIRING OR REPLACING TO THE SATISFACTION OF THE ENGINEER. ALL DAMAGE TO CURBS, UNDERDRAINS, DRIVES, BUILDINGS, ETC. CAUSED BY THE INSTALLATION OF NEW WORK.
4. CONTRACTOR TO STUB CONDUIT UP APPROXIMATELY 3' IN FRONT OR BACK OF THE LIGHT POLE LOCATIONS TO PROVIDE ADEQUATE SPACE FOR JUNCTION BOXES. LIGHT FIXTURES TO BE INSTALLED BY GREENVILLE UTILITIES (GUC) AT A LATER DATE.
5. UNDERGROUND CONDUITS ARE 2" PVC CONDUIT. INSTALL PULL LINE INSIDE CONDUIT.
6. JUNCTION BOXES ARE 18" (W) x 24" (L) x 18" (D).
7. LIGHTING LAYOUT SHOWN ASSUMES UTILITY RELOCATION COMPLETE.







MATCHLINE: SEE SHEET E-6

MATCHLINE: SEE SHEET E-6

MATCHLINE: SEE SHEET E-8

MATCHLINE: SEE SHEET E-8

REVISIONS

**SHEET NOTES:**

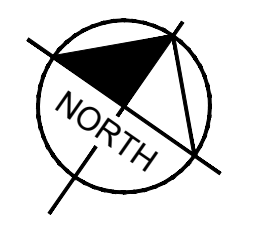
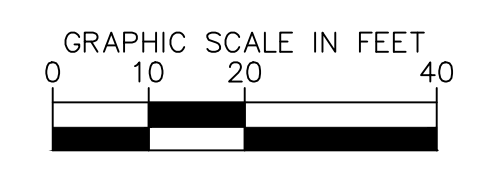
LIGHTING PLAN ASSUMES UTILITY RELOCATION HAS BEEN COMPLETED.

**LIGHTING LEGEND**

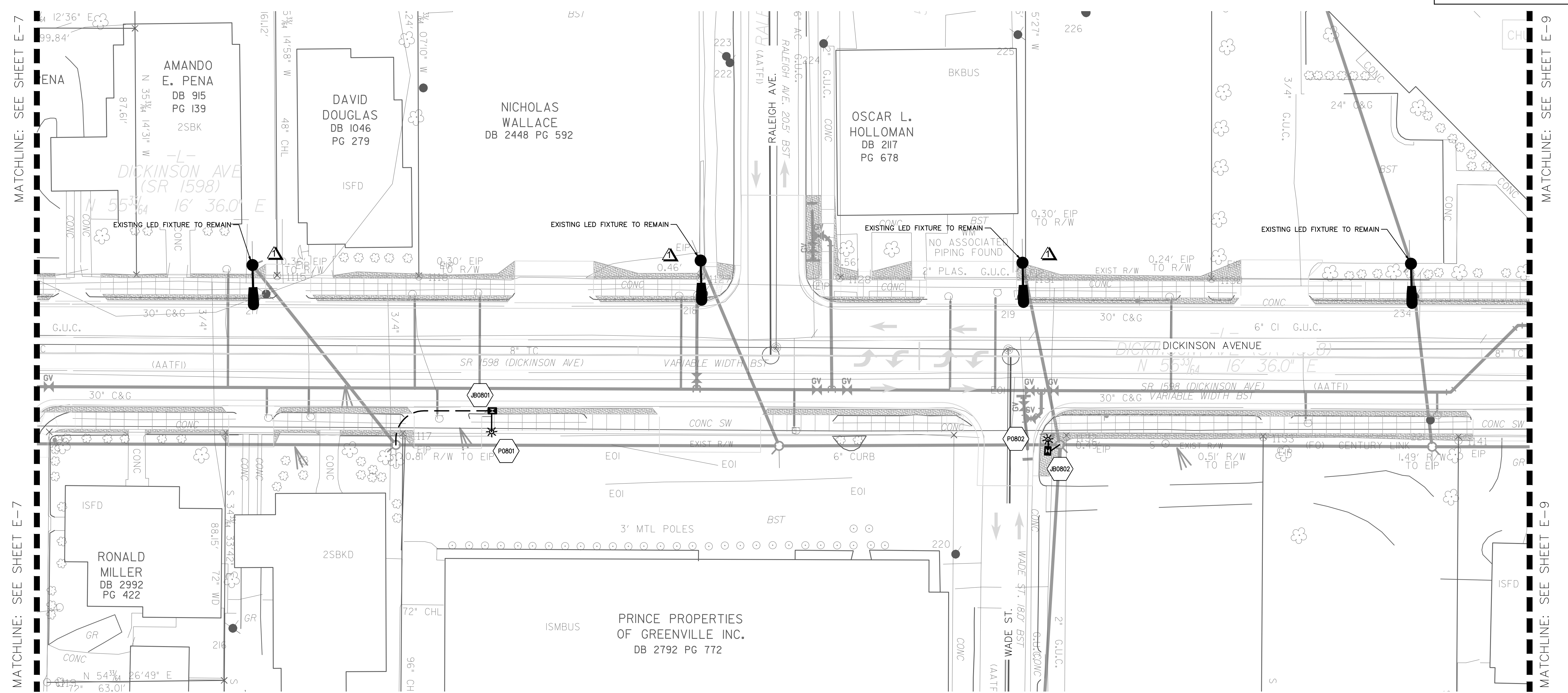
- 110W GUC LED COBRA HEAD FIXTURE
- 100W GUC BLACK DECORATIVE POLE W/LED LANTERN FIXTURE
- 18" x 24" x 18" TYPE PC JUNCTION BOX
- LIGHT FIXTURE, JUNCTION BOX ID
- ELECTRICAL CONDUIT (2" UNLESS OTHERWISE NOTED)
- ELECTRICAL SERVICE ASSEMBLY
- DUPLEX RECEPTACLE

**GENERAL NOTES:**

- THE STANDARD SPECIFICATIONS FOR ROADS AND STRUCTURES DATED JANUARY 2018 OF THE STATE OF NORTH CAROLINA DEPARTMENT OF TRANSPORTATION AND SUPPLEMENTAL SPECIFICATIONS LISTED IN THE BID DOCUMENTS SHALL GOVERN THIS IMPROVEMENT.
- CONDUIT PATHS ARE SCHEMATIC IN NATURE. CONTRACTOR SHALL ROUTE UNDERGROUND RACEWAYS BEHIND CURB AND TO AVOID CONFLICTS WITH EXISTING AND/OR PROPOSED VALVES, METERS, CATCH BASINS, STREET TREES, ETC. CONTRACTOR TO MINIMIZE DISTURBANCE TO ROADWAY DURING INSTALLATION OF RACEWAYS WHEN NOT CROSSING DRIVES.
- CONTRACTOR IS RESPONSIBLE FOR REPAIRING OR REPLACING TO THE SATISFACTION OF THE ENGINEER. ALL DAMAGE TO CURBS, UNDERDRAINS, DRIVES, BUILDINGS, ETC. CAUSED BY THE INSTALLATION OF NEW WORK.
- CONTRACTOR TO STUB CONDUIT UP APPROXIMATELY 3' IN FRONT OR BACK OF THE LIGHT POLE LOCATIONS TO PROVIDE ADEQUATE SPACE FOR JUNCTION BOXES. LIGHT FIXTURES TO BE INSTALLED BY GREENVILLE UTILITIES (GUC) AT A LATER DATE.
- UNDERGROUND CONDUITS ARE 2" PVC CONDUIT. INSTALL PULL LINE INSIDE CONDUIT.
- JUNCTION BOXES ARE 18" (W) x 24" (L) x 18" (D).
- LIGHTING LAYOUT SHOWN ASSUMES UTILITY RELOCATION COMPLETE.







REVISIONS

**SHEET NOTES:**

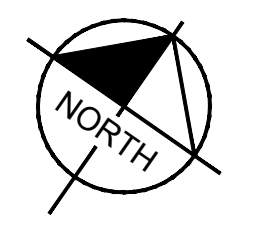
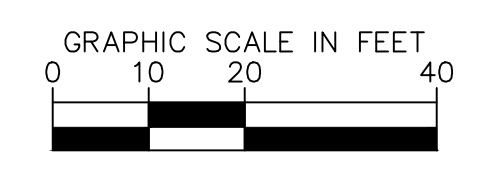
LIGHTING PLAN ASSUMES UTILITY RELOCATION HAS BEEN COMPLETED.

**LIGHTING LEGEND**

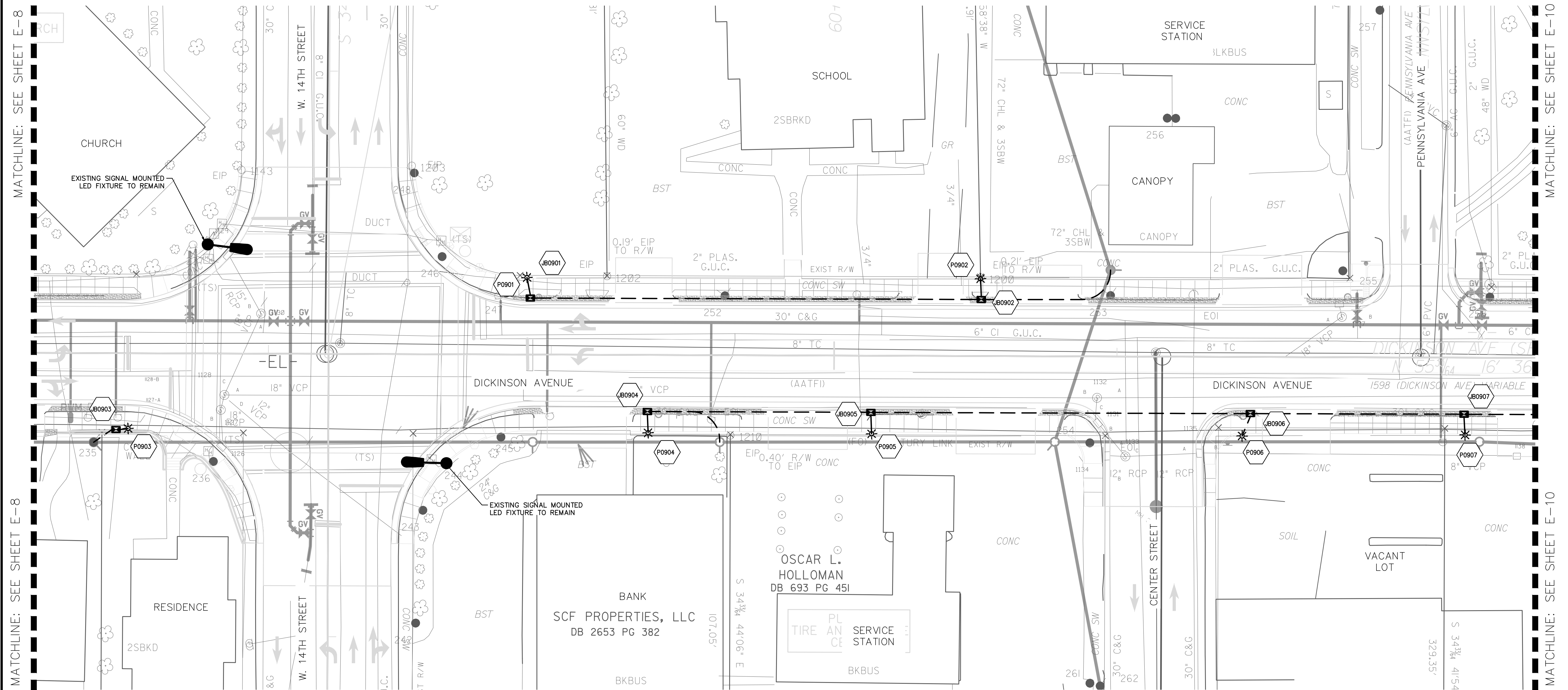
- 110W GUC LED COBRA HEAD FIXTURE
- 100W GUC BLACK DECORATIVE POLE W/LED LANTERN FIXTURE
- 18" x 24" x 18" TYPE PC JUNCTION BOX
- LIGHT FIXTURE, JUNCTION BOX ID
- ELECTRICAL CONDUIT (2" UNLESS OTHERWISE NOTED)
- ELECTRICAL SERVICE ASSEMBLY
- DUPLEX RECEPTACLE

**GENERAL NOTES:**

- THE STANDARD SPECIFICATIONS FOR ROADS AND STRUCTURES DATED JANUARY 2018 OF THE STATE OF NORTH CAROLINA DEPARTMENT OF TRANSPORTATION AND SUPPLEMENTAL SPECIFICATIONS LISTED IN THE BID DOCUMENTS SHALL GOVERN THIS IMPROVEMENT.
- CONDUIT PATHS ARE SCHEMATIC IN NATURE. CONTRACTOR SHALL ROUTE UNDERGROUND RACEWAYS BEHIND CURB AND TO AVOID CONFLICTS WITH EXISTING AND/OR PROPOSED VALVES, METERS, CATCH BASINS, STREET TREES, ETC. CONTRACTOR TO MINIMIZE DISTURBANCE TO ROADWAY DURING INSTALLATION OF RACEWAYS WHEN NOT CROSSING DRIVES.
- CONTRACTOR IS RESPONSIBLE FOR REPAIRING OR REPLACING TO THE SATISFACTION OF THE ENGINEER. ALL DAMAGE TO CURBS, UNDERDRAINS, DRIVES, BUILDINGS, ETC. CAUSED BY THE INSTALLATION OF NEW WORK.
- CONTRACTOR TO STUB CONDUIT UP APPROXIMATELY 3' IN FRONT OR BACK OF THE LIGHT POLE LOCATIONS TO PROVIDE ADEQUATE SPACE FOR JUNCTION BOXES. LIGHT FIXTURES TO BE INSTALLED BY GREENVILLE UTILITIES (GUC) AT A LATER DATE.
- UNDERGROUND CONDUITS ARE 2" PVC CONDUIT. INSTALL PULL LINE INSIDE CONDUIT.
- JUNCTION BOXES ARE 18" (W) x 24" (L) x 18" (D).
- LIGHTING LAYOUT SHOWN ASSUMES UTILITY RELOCATION COMPLETE.







MATCHLINE: SEE SHEET E-8

MATCHLINE: SEE SHEET E-8

MATCHLINE: SEE SHEET E-10

MATCHLINE: SEE SHEET E-10

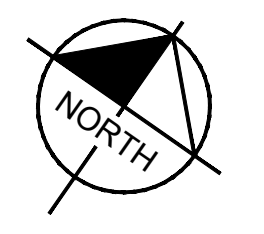
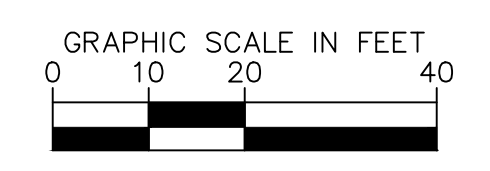
REVISIONS

**LIGHTING LEGEND**

- |  |  |  |  |
|--|--|--|--|
|  | 110W GUC LED COBRA HEAD FIXTURE                      |  | ELECTRICAL CONDUIT (2" UNLESS OTHERWISE NOTED) |
|  | 100W GUC BLACK DECORATIVE POLE W/LED LANTERN FIXTURE |  | ELECTRICAL SERVICE ASSEMBLY                    |
|  | 18" x 24" x 18" TYPE PC JUNCTION BOX                 |  | DUPLEX RECEPTACLE                              |
|  | LIGHT FIXTURE, JUNCTION BOX ID                       |  |  |

**GENERAL NOTES:**

1. THE STANDARD SPECIFICATIONS FOR ROADS AND STRUCTURES DATED JANUARY 2018 OF THE STATE OF NORTH CAROLINA DEPARTMENT OF TRANSPORTATION AND SUPPLEMENTAL SPECIFICATIONS LISTED IN THE BID DOCUMENTS SHALL GOVERN THIS IMPROVEMENT.
2. CONDUIT PATHS ARE SCHEMATIC IN NATURE. CONTRACTOR SHALL ROUTE UNDERGROUND RACEWAYS BEHIND CURB AND TO AVOID CONFLICTS WITH EXISTING AND/OR PROPOSED VALVES, METERS, CATCH BASINS, STREET TREES, ETC. CONTRACTOR TO MINIMIZE DISTURBANCE TO ROADWAY DURING INSTALLATION OF RACEWAYS WHEN NOT CROSSING DRIVES.
3. CONTRACTOR IS RESPONSIBLE FOR REPAIRING OR REPLACING TO THE SATISFACTION OF THE ENGINEER. ALL DAMAGE TO CURBS, UNDERDRAINS, DRIVES, BUILDINGS, ETC. CAUSED BY THE INSTALLATION OF NEW WORK.
4. CONTRACTOR TO STUB CONDUIT UP APPROXIMATELY 3' IN FRONT OR BACK OF THE LIGHT POLE LOCATIONS TO PROVIDE ADEQUATE SPACE FOR JUNCTION BOXES. LIGHT FIXTURES TO BE INSTALLED BY GREENVILLE UTILITIES (GUC) AT A LATER DATE.
5. UNDERGROUND CONDUITS ARE 2" PVC CONDUIT. INSTALL PULL LINE INSIDE CONDUIT.
6. JUNCTION BOXES ARE 18" (W) x 24" (L) x 18" (D).
7. LIGHTING LAYOUT SHOWN ASSUMES UTILITY RELOCATION COMPLETE.





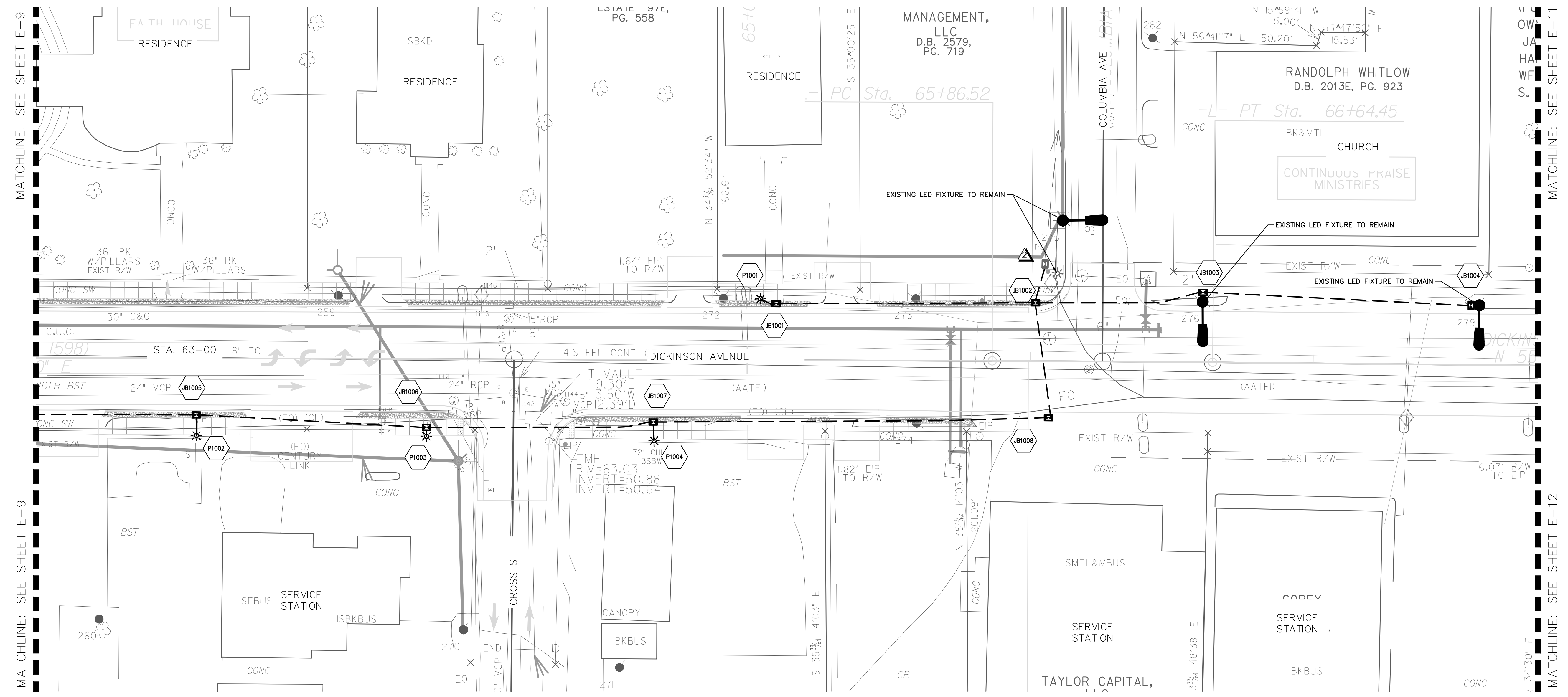
**Kimley»Horn**  
 421 FAYETTEVILLE STREET, SUITE 600  
 RALEIGH, NC 27601

PROJECT REFERENCE NO. U-5606  
 SHEET NO. E-10  
 SHEET TITLE: STREET LIGHTING PLAN

**SEAL**  
 027615  
 ENGINEER  
 DON S. CHAMBERS

DocuSigned by:  
 Don S. Chambers  
 2710/2022

**DOCUMENT NOT CONSIDERED FINAL  
 UNLESS ALL SIGNATURES COMPLETED**



REVISIONS

MATCHLINE: SEE SHEET E-9

**SHEET NOTES:**

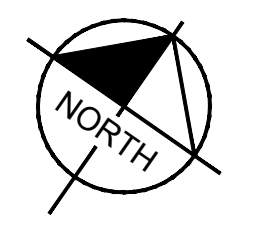
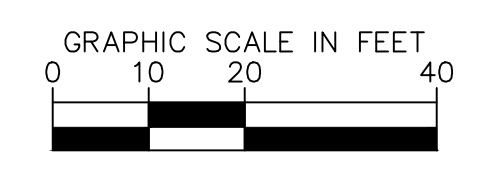
- ▲ LIGHTING PLAN ASSUMES UTILITY RELOCATION HAS BEEN COMPLETED.
- ▲ CONTRACTOR TO CONNECT PROPOSED CONDUIT SYSTEM TO EXISTING CONDUIT SYSTEM DESIGNED AS A PART OF NCDOT PROJECT U-3315

**LIGHTING LEGEND**

- 110W GUC LED COBRA HEAD FIXTURE
- ☀ 100W GUC BLACK DECORATIVE POLE W/LED LANTERN FIXTURE
- ⊠ 18" x 24" x 18" TYPE PC JUNCTION BOX
- # LIGHT FIXTURE, JUNCTION BOX ID
- ELECTRICAL CONDUIT (2" UNLESS OTHERWISE NOTED)
- ⓔ ELECTRICAL SERVICE ASSEMBLY
- Ⓜ DUPLEX RECEPTACLE

**GENERAL NOTES:**

- THE STANDARD SPECIFICATIONS FOR ROADS AND STRUCTURES DATED JANUARY 2018 OF THE STATE OF NORTH CAROLINA DEPARTMENT OF TRANSPORTATION AND SUPPLEMENTAL SPECIFICATIONS LISTED IN THE BID DOCUMENTS SHALL GOVERN THIS IMPROVEMENT.
- CONDUIT PATHS ARE SCHEMATIC IN NATURE. CONTRACTOR SHALL ROUTE UNDERGROUND RACEWAYS BEHIND CURB AND TO AVOID CONFLICTS WITH EXISTING AND/OR PROPOSED VALVES, METERS, CATCH BASINS, STREET TREES, ETC. CONTRACTOR TO MINIMIZE DISTURBANCE TO ROADWAY DURING INSTALLATION OF RACEWAYS WHEN NOT CROSSING DRIVES.
- CONTRACTOR IS RESPONSIBLE FOR REPAIRING OR REPLACING TO THE SATISFACTION OF THE ENGINEER. ALL DAMAGE TO CURBS, UNDERDRAINS, DRIVES, BUILDINGS, ETC. CAUSED BY THE INSTALLATION OF NEW WORK.
- CONTRACTOR TO STUB CONDUIT UP APPROXIMATELY 3' IN FRONT OR BACK OF THE LIGHT POLE LOCATIONS TO PROVIDE ADEQUATE SPACE FOR JUNCTION BOXES. LIGHT FIXTURES TO BE INSTALLED BY GREENVILLE UTILITIES (GUC) AT A LATER DATE.
- UNDERGROUND CONDUITS ARE 2" PVC CONDUIT. INSTALL PULL LINE INSIDE CONDUIT.
- JUNCTION BOXES ARE 18" (W) x 24" (L) x 18" (D).
- LIGHTING LAYOUT SHOWN ASSUMES UTILITY RELOCATION COMPLETE.





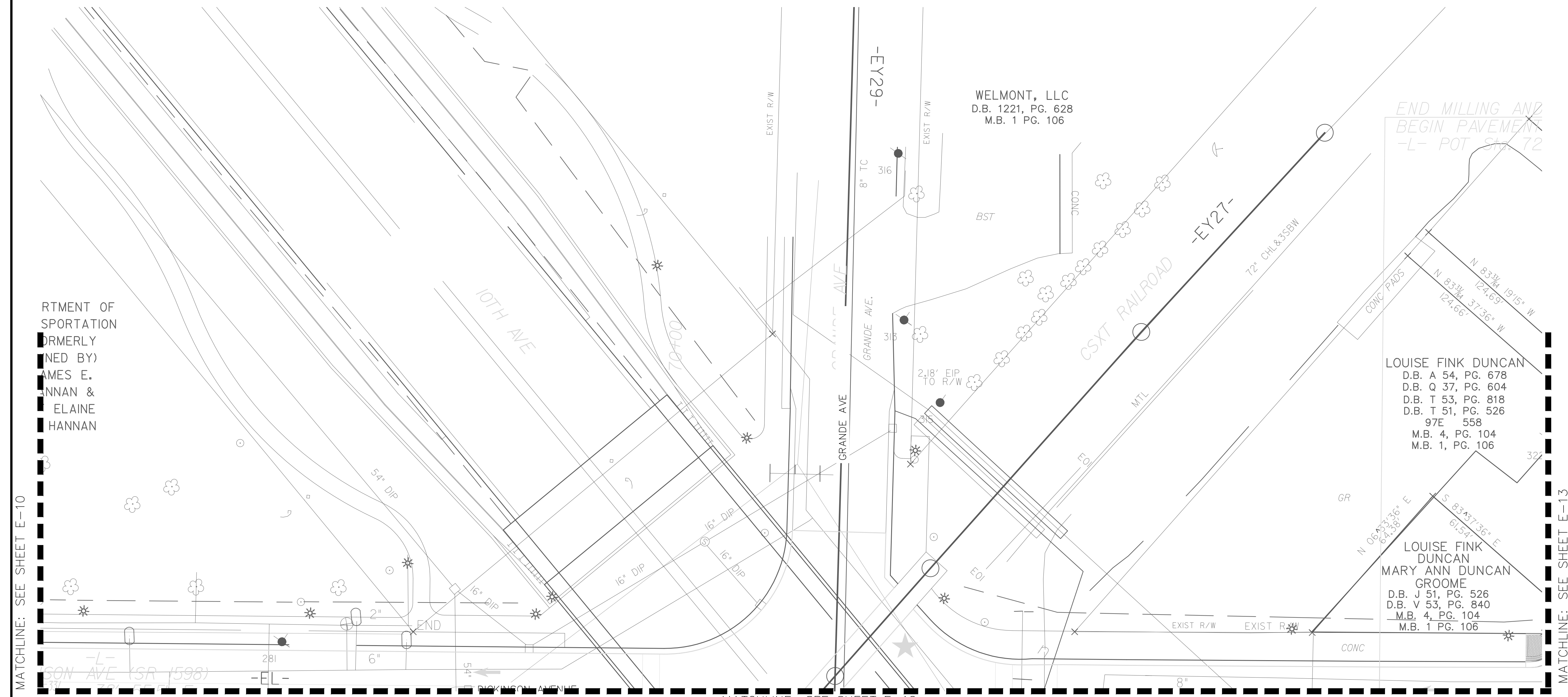
**Kimley»Horn**  
 ©2018  
 421 FAYETTEVILLE STREET, SUITE 600  
 RALEIGH, NC 27601

PROJECT REFERENCE NO. U-5606	SHEET NO. E-11
SHEET TITLE: STREET LIGHTING PLAN	

DocuSigned by:  
 Don S. Chambers  
 271072022

**SEAL**  
 027615  
 NORTH CAROLINA PROFESSIONAL ENGINEER  
 DON S. CHAMBERS

**DOCUMENT NOT CONSIDERED FINAL  
 UNLESS ALL SIGNATURES COMPLETED**



REVISIONS

DEPARTMENT OF TRANSPORTATION  
 FORMERLY  
 DESIGNED BY  
 JAMES E. HANNAN &  
 ELAINE HANNAN

MATCHLINE: SEE SHEET E-10

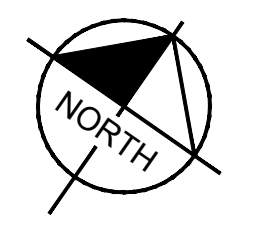
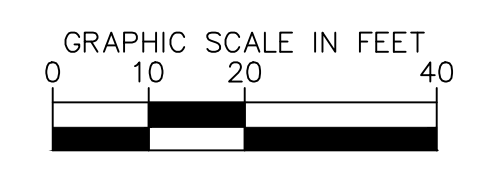
MATCHLINE: SEE SHEET E-13

**SHEET NOTES:**  
 ALL EXISTING FIXTURES THIS SHEET TO REMAIN.

**LIGHTING LEGEND**

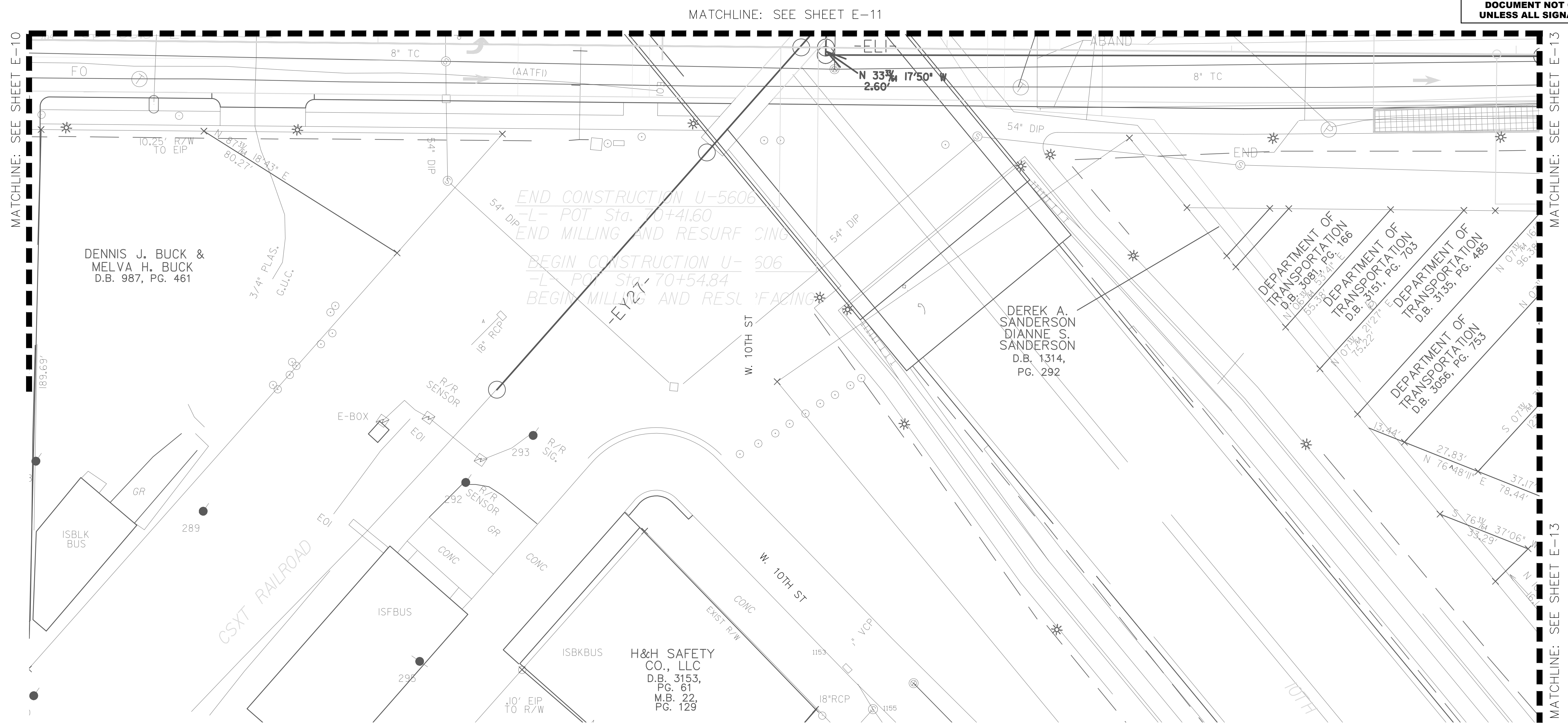
- |  |  |  |  |
|--|--|--|--|
|  | 110W GUC LED COBRA HEAD FIXTURE                      |  | ELECTRICAL CONDUIT (2" UNLESS OTHERWISE NOTED) |
|  | 100W GUC BLACK DECORATIVE POLE W/LED LANTERN FIXTURE |  | ELECTRICAL SERVICE ASSEMBLY                    |
|  | 18" x 24" x 18" TYPE PC JUNCTION BOX                 |  | DUPLEX RECEPTACLE                              |
|  | LIGHT FIXTURE, JUNCTION BOX ID                       |  |  |

- GENERAL NOTES:**
- THE STANDARD SPECIFICATIONS FOR ROADS AND STRUCTURES DATED JANUARY 2018 OF THE STATE OF NORTH CAROLINA DEPARTMENT OF TRANSPORTATION AND SUPPLEMENTAL SPECIFICATIONS LISTED IN THE BID DOCUMENTS SHALL GOVERN THIS IMPROVEMENT. CONDUIT PATHS ARE SCHEMATIC IN NATURE. CONTRACTOR SHALL ROUTE UNDERGROUND RACEWAYS BEHIND CURB AND TO AVOID CONFLICTS WITH EXISTING AND/OR PROPOSED VALVES, METERS, CATCH BASINS, STREET TREES, ETC. CONTRACTOR TO MINIMIZE DISTURBANCE TO ROADWAY DURING INSTALLATION OF RACEWAYS WHEN NOT CROSSING DRIVES.
  - CONTRACTOR IS RESPONSIBLE FOR REPAIRING OR REPLACING TO THE SATISFACTION OF THE ENGINEER. ALL DAMAGE TO CURBS, UNDERDRAINS, DRIVES, BUILDINGS, ETC. CAUSED BY THE INSTALLATION OF NEW WORK.
  - CONTRACTOR TO STUB CONDUIT UP APPROXIMATELY 3' IN FRONT OR BACK OF THE LIGHT POLE LOCATIONS TO PROVIDE ADEQUATE SPACE FOR JUNCTION BOXES. LIGHT FIXTURES TO BE INSTALLED BY GREENVILLE UTILITIES (GUC) AT A LATER DATE.
  - UNDERGROUND CONDUITS ARE 2" PVC CONDUIT. INSTALL PULL LINE INSIDE CONDUIT.
  - JUNCTION BOXES ARE 18" (W) x 24" (L) x 18" (D).
  - LIGHTING LAYOUT SHOWN ASSUMES UTILITY RELOCATION COMPLETE.





PROJECT REFERENCE NO. U-5606	SHEET NO. E-12
SHEET TITLE: STREET LIGHTING PLAN	
<b>DOCUMENT NOT CONSIDERED FINAL UNLESS ALL SIGNATURES COMPLETED</b>	



MATCHLINE: SEE SHEET E-10

MATCHLINE: SEE SHEET E-13

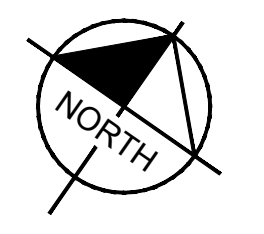
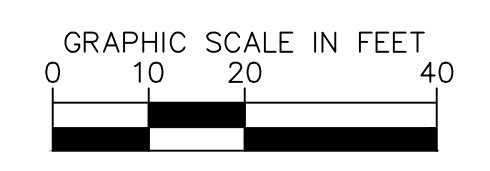
**SHEET NOTES:**  
ALL EXISTING FIXTURES THIS SHEET TO REMAIN.

**LIGHTING LEGEND**

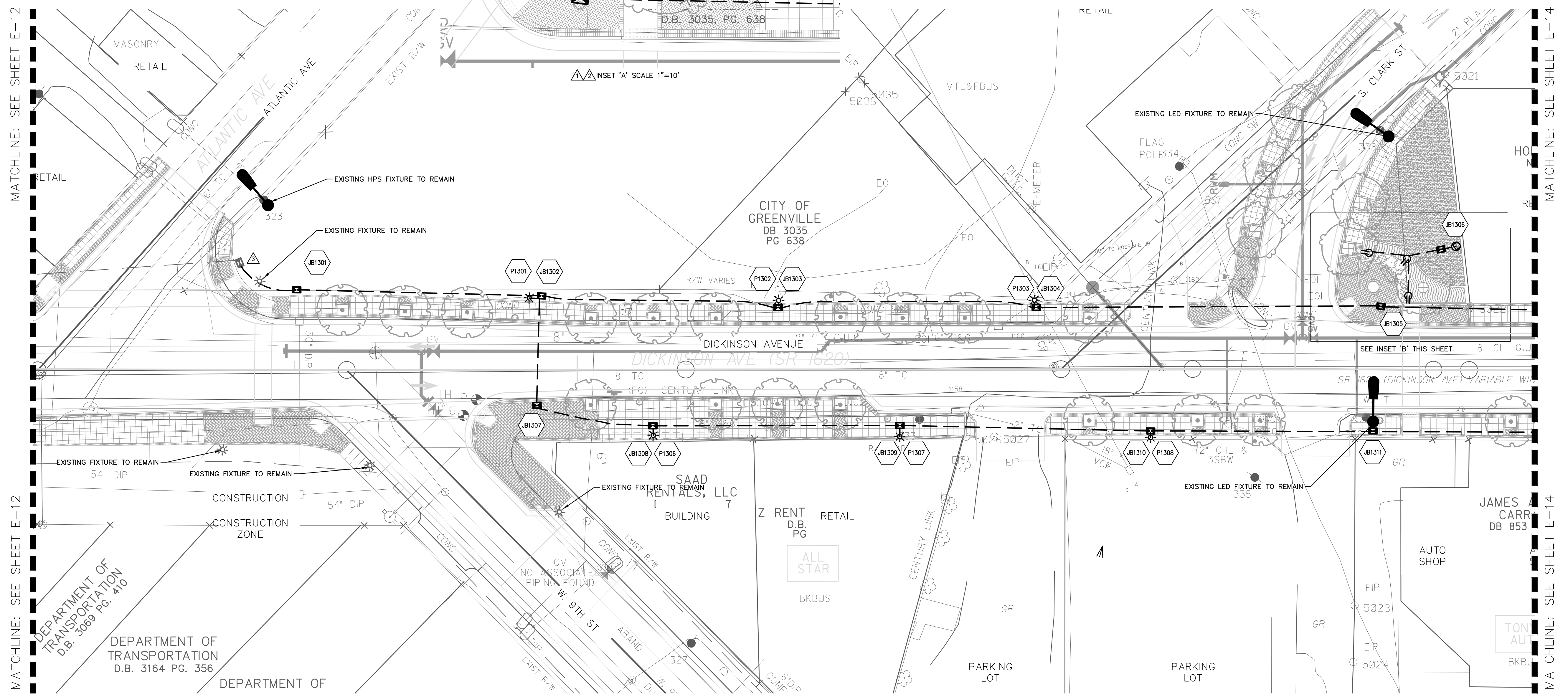
- |  |  |  |  |
|--|--|--|--|
|  | 110W GUC LED COBRA HEAD FIXTURE                      |  | ELECTRICAL CONDUIT (2" UNLESS OTHERWISE NOTED) |
|  | 100W GUC BLACK DECORATIVE POLE W/LED LANTERN FIXTURE |  | ELECTRICAL SERVICE ASSEMBLY                    |
|  | 18' x 24' x 18' TYPE PC JUNCTION BOX                 |  | DUPLEX RECEPTACLE                              |
|  | LIGHT FIXTURE, JUNCTION BOX ID                       |  |  |

**GENERAL NOTES:**

- THE STANDARD SPECIFICATIONS FOR ROADS AND STRUCTURES DATED JANUARY 2018 OF THE STATE OF NORTH CAROLINA DEPARTMENT OF TRANSPORTATION AND SUPPLEMENTAL SPECIFICATIONS LISTED IN THE BID DOCUMENTS SHALL GOVERN THIS IMPROVEMENT.
- CONDUIT PATHS ARE SCHEMATIC IN NATURE. CONTRACTOR SHALL ROUTE UNDERGROUND RACEWAYS BEHIND CURB AND TO AVOID CONFLICTS WITH EXISTING AND/OR PROPOSED VALVES, METERS, CATCH BASINS, STREET TREES, ETC. CONTRACTOR TO MINIMIZE DISTURBANCE TO ROADWAY DURING INSTALLATION OF RACEWAYS WHEN NOT CROSSING DRIVES.
- CONTRACTOR IS RESPONSIBLE FOR REPAIRING OR REPLACING TO THE SATISFACTION OF THE ENGINEER. ALL DAMAGE TO CURBS, UNDERDRAINS, DRIVES, BUILDINGS, ETC. CAUSED BY THE INSTALLATION OF NEW WORK.
- CONTRACTOR TO STUB CONDUIT UP APPROXIMATELY 3' IN FRONT OR BACK OF THE LIGHT POLE LOCATIONS TO PROVIDE ADEQUATE SPACE FOR JUNCTION BOXES. LIGHT FIXTURES TO BE INSTALLED BY GREENVILLE UTILITIES (GUC) AT A LATER DATE.
- UNDERGROUND CONDUITS ARE 2" PVC CONDUIT. INSTALL PULL LINE INSIDE CONDUIT.
- JUNCTION BOXES ARE 18" (W) x 24" (L) x 18" (D).
- LIGHTING LAYOUT SHOWN ASSUMES UTILITY RELOCATION COMPLETE.

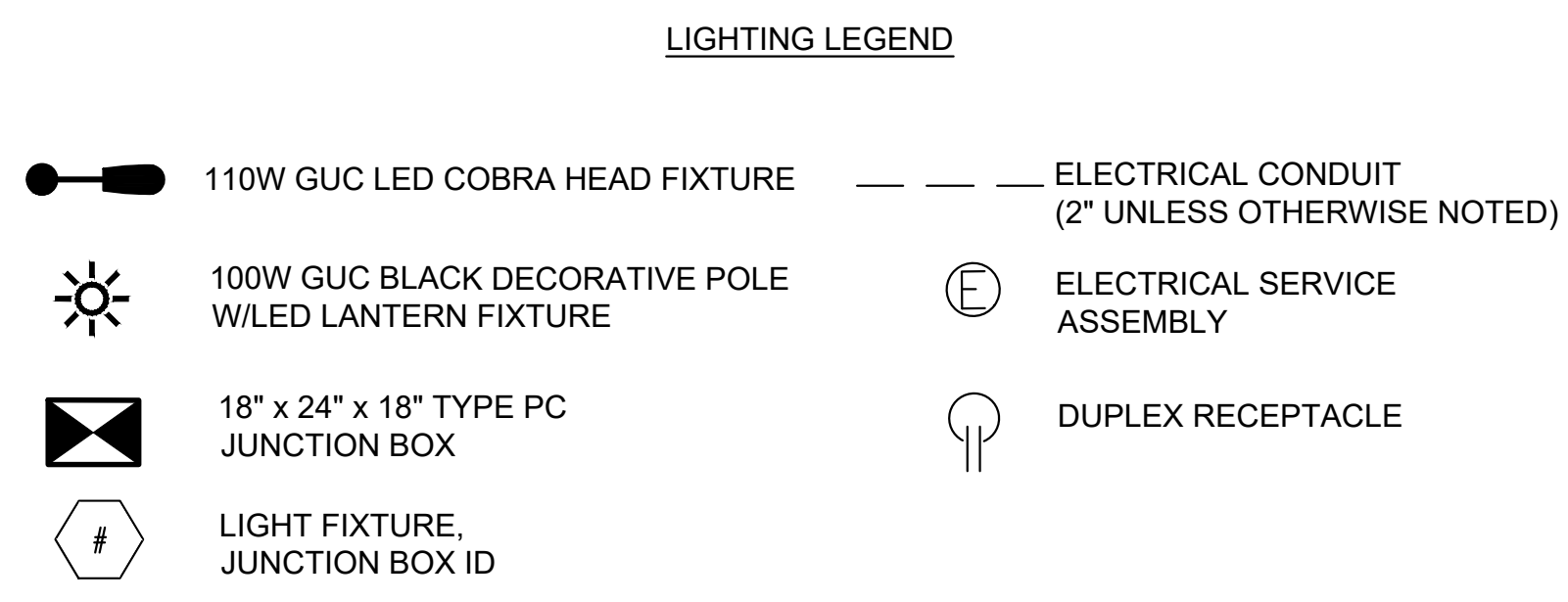






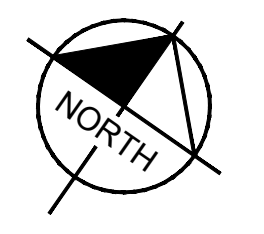
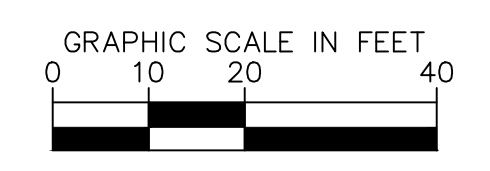
**SHEET NOTES:**

- ▲ SEE SHEET E-18 DETAIL 4 FOR RECEPTACLE CONDUIT AND CONDUCTOR SCHEDULE.
- ▲ CONTRACTOR TO VERIFY FINAL ORIENTATION OF RECEPTACLES WITH ENGINEER.
- ▲ CONTRACTOR TO CONNECT PROPOSED CONDUIT SYSTEM TO EXISTING CONDUIT SYSTEM DESIGNED AS PART OF NCDOT PROJECT U-3315.
- ▲ CONTRACTOR TO INSTALL ELECTRICAL SERVICE ASSEMBLY LC1. SEE SHEET E-18 FOR DETAILS.

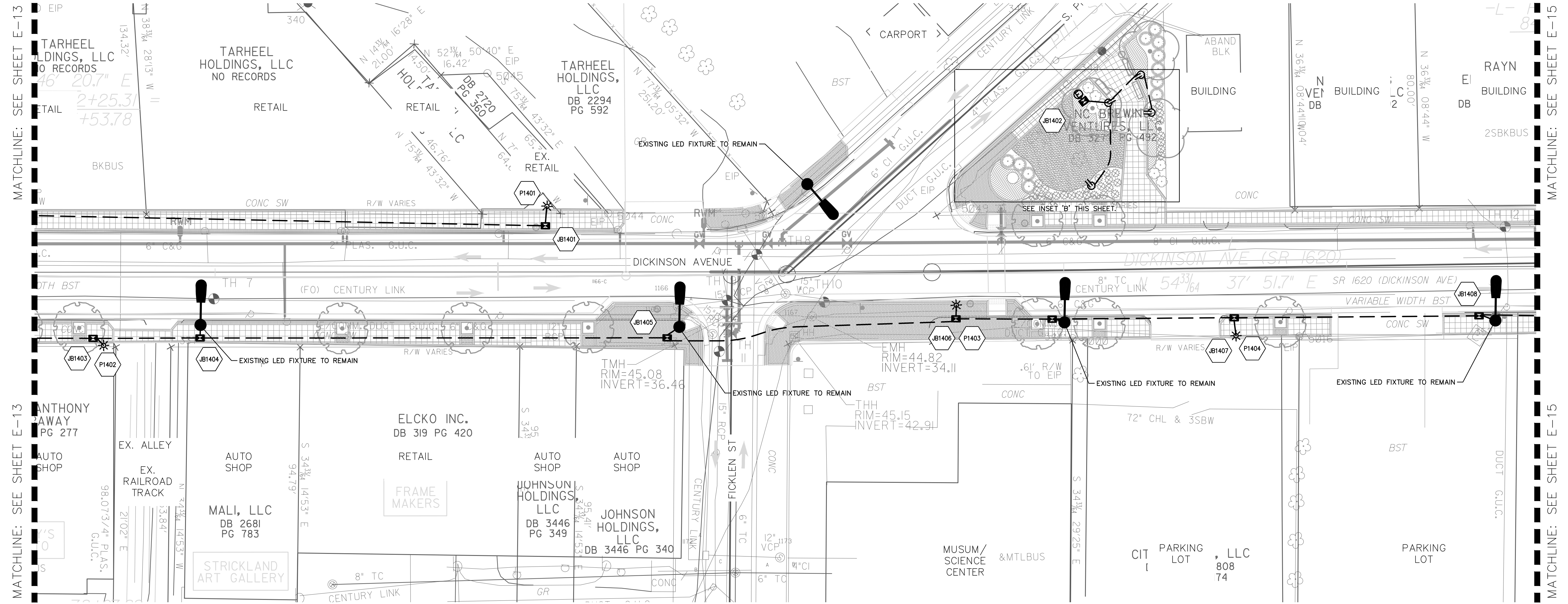
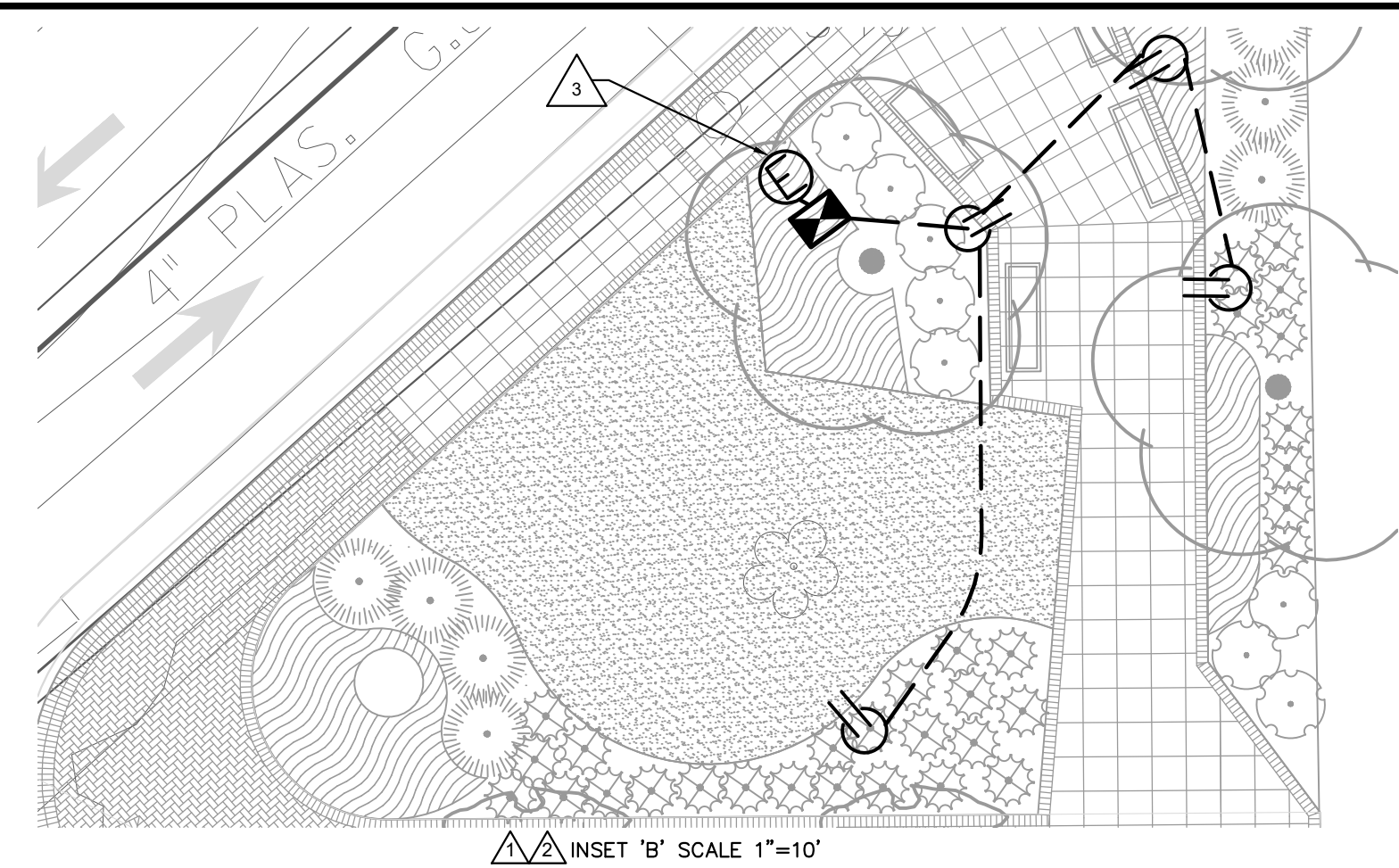


**GENERAL NOTES:**

1. THE STANDARD SPECIFICATIONS FOR ROADS AND STRUCTURES DATED JANUARY 2018 OF THE STATE OF NORTH CAROLINA DEPARTMENT OF TRANSPORTATION AND SUPPLEMENTAL SPECIFICATIONS LISTED IN THE BID DOCUMENTS SHALL GOVERN THIS IMPROVEMENT.
2. CONDUIT PATHS ARE SCHEMATIC IN NATURE. CONTRACTOR SHALL ROUTE UNDERGROUND RACEWAYS BEHIND CURB AND TO AVOID CONFLICTS WITH EXISTING AND/OR PROPOSED VALVES, METERS, CATCH BASINS, STREET TREES, ETC. CONTRACTOR TO MINIMIZE DISTURBANCE TO ROADWAY DURING INSTALLATION OF RACEWAYS WHEN NOT CROSSING DRIVES.
3. CONTRACTOR IS RESPONSIBLE FOR REPAIRING OR REPLACING TO THE SATISFACTION OF THE ENGINEER. ALL DAMAGE TO CURBS, UNDERDRAINS, DRIVES, BUILDINGS, ETC. CAUSED BY THE INSTALLATION OF NEW WORK.
4. CONTRACTOR TO STUB CONDUIT UP APPROXIMATELY 3' IN FRONT OR BACK OF THE LIGHT POLE LOCATIONS TO PROVIDE ADEQUATE SPACE FOR JUNCTION BOXES. LIGHT FIXTURES TO BE INSTALLED BY GREENVILLE UTILITIES (GUC) AT A LATER DATE.
5. UNDERGROUND CONDUITS ARE 2" PVC CONDUIT. INSTALL PULL LINE INSIDE CONDUIT.
6. JUNCTION BOXES ARE 18" (W) x 24" (L) x 18" (D).
7. LIGHTING LAYOUT SHOWN ASSUMES UTILITY RELOCATION COMPLETE.







**SHEET NOTES:**

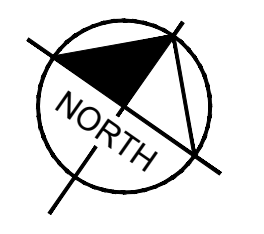
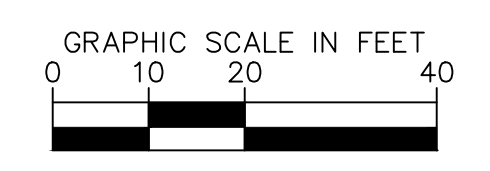
- ▲ SEE SHEET E-18 DETAIL 4 FOR RECEPTACLE CONDUIT AND CONDUCTOR SCHEDULE.
- ▲ CONTRACTOR TO VERIFY FINAL ORIENTATION OF RECEPTACLES WITH ENGINEER.
- ▲ CONTRACTOR TO INSTALL ELECTRICAL SERVICE ASSEMBLY LC2. SEE SHEET E-18 FOR DETAILS

**LIGHTING LEGEND**

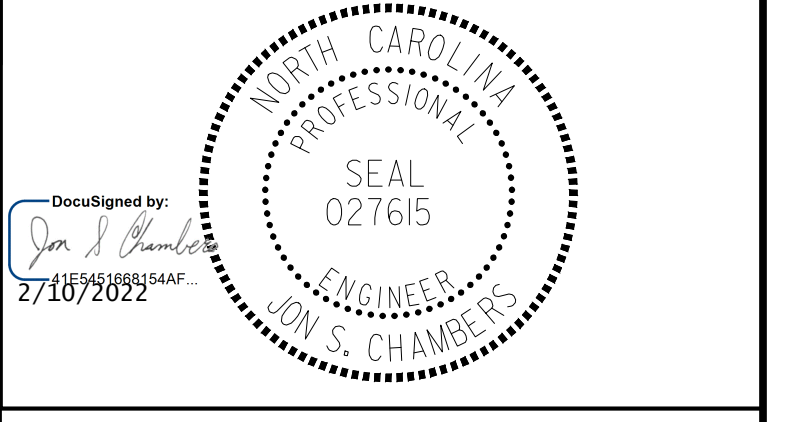
	110W GUC LED COBRA HEAD FIXTURE		ELECTRICAL CONDUIT (2" UNLESS OTHERWISE NOTED)
	100W GUC BLACK DECORATIVE POLE W/LED LANTERN FIXTURE		ELECTRICAL SERVICE ASSEMBLY
	18" x 24" x 18" TYPE PC JUNCTION BOX		DUPLEX RECEPTACLE
	LIGHT FIXTURE, JUNCTION BOX ID		

**GENERAL NOTES:**

- THE STANDARD SPECIFICATIONS FOR ROADS AND STRUCTURES DATED JANUARY 2018 OF THE STATE OF NORTH CAROLINA DEPARTMENT OF TRANSPORTATION AND SUPPLEMENTAL SPECIFICATIONS LISTED IN THE BID DOCUMENTS SHALL GOVERN THIS IMPROVEMENT.
- CONDUIT PATHS ARE SCHEMATIC IN NATURE. CONTRACTOR SHALL ROUTE UNDERGROUND RACEWAYS BEHIND CURB AND TO AVOID CONFLICTS WITH EXISTING AND/OR PROPOSED VALVES, METERS, CATCH BASINS, STREET TREES, ETC. CONTRACTOR TO MINIMIZE DISTURBANCE TO ROADWAY DURING INSTALLATION OF RACEWAYS WHEN NOT CROSSING DRIVES.
- CONTRACTOR IS RESPONSIBLE FOR REPAIRING OR REPLACING TO THE SATISFACTION OF THE ENGINEER. ALL DAMAGE TO CURBS, UNDERDRAINS, DRIVES, BUILDINGS, ETC. CAUSED BY THE INSTALLATION OF NEW WORK.
- CONTRACTOR TO STUB CONDUIT UP APPROXIMATELY 3' IN FRONT OR BACK OF THE LIGHT POLE LOCATIONS TO PROVIDE ADEQUATE SPACE FOR JUNCTION BOXES. LIGHT FIXTURES TO BE INSTALLED BY GREENVILLE UTILITIES (GUC) AT A LATER DATE.
- UNDERGROUND CONDUITS ARE 2" PVC CONDUIT. INSTALL PULL LINE INSIDE CONDUIT.
- JUNCTION BOXES ARE 18" (W) x 24" (L) x 18" (D).
- LIGHTING LAYOUT SHOWN ASSUMES UTILITY RELOCATION COMPLETE.



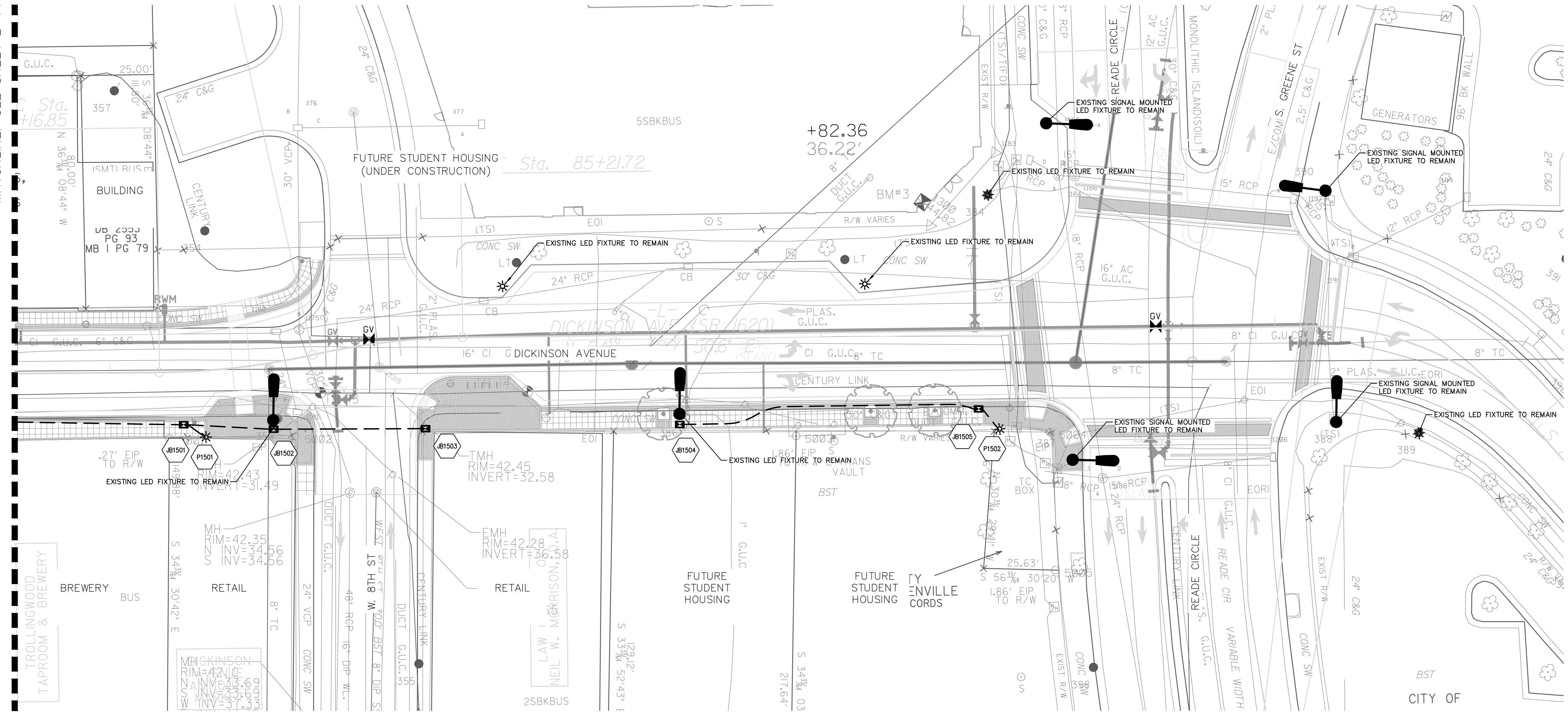




**DOCUMENT NOT CONSIDERED FINAL  
UNLESS ALL SIGNATURES COMPLETED**

MATCHLINE: SEE SHEET E-14

MATCHLINE: SEE SHEET E-14

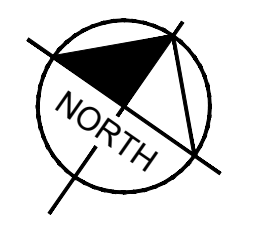
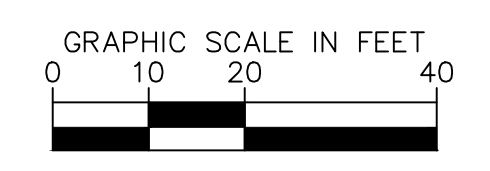


**LIGHTING LEGEND**

- |  |  |  |  |
|--|--|--|--|
|  | 110W GUC LED COBRA HEAD FIXTURE                      |  | ELECTRICAL CONDUIT (2" UNLESS OTHERWISE NOTED) |
|  | 100W GUC BLACK DECORATIVE POLE W/LED LANTERN FIXTURE |  | ELECTRICAL SERVICE ASSEMBLY                    |
|  | 18' x 24' x 18' TYPE PC JUNCTION BOX                 |  | DUPLIX RECEPTACLE                              |
|  | LIGHT FIXTURE, JUNCTION BOX ID                       |  |  |

**GENERAL NOTES:**

1. THE STANDARD SPECIFICATIONS FOR ROADS AND STRUCTURES DATED JANUARY 2018 OF THE STATE OF NORTH CAROLINA DEPARTMENT OF TRANSPORTATION AND SUPPLEMENTAL SPECIFICATIONS LISTED IN THE BID DOCUMENTS SHALL GOVERN THIS IMPROVEMENT.
2. CONDUIT PATHS ARE SCHEMATIC IN NATURE. CONTRACTOR SHALL ROUTE UNDERGROUND RACEWAYS BEHIND CURB AND TO AVOID CONFLICTS WITH EXISTING AND/OR PROPOSED VALVES, METERS, CATCH BASINS, STREET TREES, ETC. CONTRACTOR TO MINIMIZE DISTURBANCE TO ROADWAY DURING INSTALLATION OF RACEWAYS WHEN NOT CROSSING DRIVES.
3. CONTRACTOR IS RESPONSIBLE FOR REPAIRING OR REPLACING TO THE SATISFACTION OF THE ENGINEER. ALL DAMAGE TO CURBS, UNDERDRAINS, DRIVES, BUILDINGS, ETC. CAUSED BY THE INSTALLATION OF NEW WORK.
4. CONTRACTOR TO STUB CONDUIT UP APPROXIMATELY 3' IN FRONT OR BACK OF THE LIGHT POLE LOCATIONS TO PROVIDE ADEQUATE SPACE FOR JUNCTION BOXES. LIGHT FIXTURES TO BE INSTALLED BY GREENVILLE UTILITIES (GUC) AT A LATER DATE.
5. UNDERGROUND CONDUITS ARE 2" PVC CONDUIT. INSTALL PULL LINE INSIDE CONDUIT.
6. JUNCTION BOXES ARE 18" (W) x 24" (L) x 18" (D).
7. LIGHTING LAYOUT SHOWN ASSUMES UTILITY RELOCATION COMPLETE.





U-5606 DICKINSON AVENUE LIGHT FIXTURE SCHEDULE



PROJECT REFERENCE NO. U-5606	SHEET NO. E-16
SHEET TITLE: STREET LIGHTING PLAN	
<p><b>DOCUMENT NOT CONSIDERED FINAL UNLESS ALL SIGNATURES COMPLETED</b></p>	

REF. NO.	DESCRIPTION	FURNISHED BY	INSTALLED BY	STATION -L-	OFFSET	SIDE	MOUNTING HEIGHT	SHEET
P0101	ROADWAY LIGHT FIXTURE	EXISTING	EXISTING	18+00.67	50.27'	RT	27'	E-1
P0201	PEDESTRIAN LIGHT FIXTURE	GUC	GUC	24+32.96	29.23'	LT	20'	E-2
P0202	PEDESTRIAN LIGHT FIXTURE	GUC	GUC	20+73.45	40.06'	RT	20'	E-2
P0203	PEDESTRIAN LIGHT FIXTURE	GUC	GUC	22+59.80	29.06'	RT	20'	E-2
P0204	PEDESTRIAN LIGHT FIXTURE	GUC	GUC	24+66.77	29.18'	RT	20'	E-2
P0301	PEDESTRIAN LIGHT FIXTURE	GUC	GUC	29+97.17	22.14'	LT	20'	E-3
P0302	PEDESTRIAN LIGHT FIXTURE	GUC	GUC	29+29.63	26.63'	RT	20'	E-3
P0303	PEDESTRIAN LIGHT FIXTURE	GUC	GUC	30+35.84	28.23'	RT	20'	E-3
P0401	PEDESTRIAN LIGHT FIXTURE	GUC	GUC	30+92.64	21.92'	LT	20'	E-4
P0402	PEDESTRIAN LIGHT FIXTURE	GUC	GUC	33+65.13	27.92'	LT	20'	E-4
P0403	PEDESTRIAN LIGHT FIXTURE	GUC	GUC	33+22.97	27.00'	RT	20'	E-4
P0404	ROADWAY LIGHT FIXTURE	EXISTING	EXISTING	35+76.89	32.35'	RT	27'	E-4
P0501	PEDESTRIAN LIGHT FIXTURE	GUC	GUC	38+48.49	26.68'	LT	27'	E-5
P0502	PEDESTRIAN LIGHT FIXTURE	GUC	GUC	38+05.37	27.01'	RT	20'	E-5
P0503	PEDESTRIAN LIGHT FIXTURE	GUC	GUC	40+40.30	27.60'	RT	20'	E-5
P0504	ROADWAY LIGHT FIXTURE	EXISTING	EXISTING	37+03.14	30.57'	LT	27'	E-5
P0601	PEDESTRIAN LIGHT FIXTURE	GUC	GUC	46+18.21	28.19'	LT	20'	E-6
P0602	PEDESTRIAN LIGHT FIXTURE	GUC	GUC	43+40.66	27.36'	RT	20'	E-6
P0701	PEDESTRIAN LIGHT FIXTURE	GUC	GUC	51+69.01	26.59'	LT	20'	E-7
P0702	PEDESTRIAN LIGHT FIXTURE	GUC	GUC	49+63.20	27.40'	RT	20'	E-7
P0703	PEDESTRIAN LIGHT FIXTURE	GUC	GUC	51+45.61	27.37'	RT	20'	E-7
P0801	PEDESTRIAN LIGHT FIXTURE	GUC	GUC	53+48.00	27.40'	RT	20'	E-8
P0802	PEDESTRIAN LIGHT FIXTURE	GUC	GUC	55+45.85	29.55'	RT	20'	E-8
P0901	PEDESTRIAN LIGHT FIXTURE	GUC	GUC	58+91.32	27.24'	LT	20'	E-9
P0902	PEDESTRIAN LIGHT FIXTURE	GUC	GUC	60+51.66	27.36'	LT	20'	E-9
P0903	PEDESTRIAN LIGHT FIXTURE	GUC	GUC	57+50.45	26.60'	RT	20'	E-9
P0904	PEDESTRIAN LIGHT FIXTURE	GUC	GUC	59+34.51	27.49'	RT	20'	E-9
P0905	PEDESTRIAN LIGHT FIXTURE	GUC	GUC	61+13.33	27.60'	RT	20'	E-9
P0906	PEDESTRIAN LIGHT FIXTURE	GUC	GUC	61+44.54	27.95'	RT	20'	E-9
P1001	PEDESTRIAN LIGHT FIXTURE	GUC	GUC	65+04.59	21.67'	LT	20'	E-10
P1002	PEDESTRIAN LIGHT FIXTURE	GUC	GUC	63+05.33	27.32'	LT	20'	E-10
P1003	PEDESTRIAN LIGHT FIXTURE	GUC	GUC	63+86.66	27.32'	RT	20'	E-10
P1004	PEDESTRIAN LIGHT FIXTURE	GUC	GUC	64+67.09	28.64'	RT	20'	E-10
P1301	PEDESTRIAN LIGHT FIXTURE	GUC	GUC	74+83.01	25.37'	LT	20'	E-13
P1302	PEDESTRIAN LIGHT FIXTURE	GUC	GUC	75+71.14	24.42'	LT	20'	E-13
P1303	PEDESTRIAN LIGHT FIXTURE	GUC	GUC	76+61.60	24.43'	LT	20'	E-13
P1306	PEDESTRIAN LIGHT FIXTURE	GUC	GUC	75+26.82	23.24'	RT	20'	E-13
P1307	PEDESTRIAN LIGHT FIXTURE	GUC	GUC	76+13.93	23.75'	RT	20'	E-13
P1308	PEDESTRIAN LIGHT FIXTURE	GUC	GUC	77+02.62	24.18'	RT	20'	E-13
P1401	PEDESTRIAN LIGHT FIXTURE	GUC	GUC	80+17.46	24.75'	LT	20'	E-14
P1402	PEDESTRIAN LIGHT FIXTURE	GUC	GUC	78+60.70	24.23'	RT	20'	E-14
P1403	PEDESTRIAN LIGHT FIXTURE	GUC	GUC	81+61.88	11.28'	RT	20'	E-14
P1404	PEDESTRIAN LIGHT FIXTURE	GUC	GUC	82+60.69	22.86'	RT	20'	E-14
P1501	PEDESTRIAN LIGHT FIXTURE	GUC	GUC	84+31.34	22.77'	RT	20'	E-15
P1502	PEDESTRIAN LIGHT FIXTURE	GUC	GUC	87+05.21	33.80'	RT	20'	E-15

REVISIONS





PROJECT REFERENCE NO. U-5606	SHEET NO. E-17
SHEET TITLE: STREET LIGHTING PLAN	
<b>DOCUMENT NOT CONSIDERED FINAL UNLESS ALL SIGNATURES COMPLETED</b>	

U-5606 DICKINSON AVENUE JUNCTION BOX SCHEDULE

REF. NO.	DESCRIPTION	FURNISHED BY	INSTALLED BY	STATION -L-	OFFSET	SIDE	SHEET
JB0201	18"x24" JUNCTION BOX	CONTRACTOR	CONTRACTOR	24+37.44	29.55'	LT	E-2
JB0202	18"x24" JUNCTION BOX	CONTRACTOR	CONTRACTOR	20+78.15	39.68'	RT	E-2
JB0203	18"x24" JUNCTION BOX	CONTRACTOR	CONTRACTOR	22+56.30	29.56'	RT	E-2
JB0204	18"x24" JUNCTION BOX	CONTRACTOR	CONTRACTOR	24+62.72	31.62'	RT	E-2
JB0301	18"x24" JUNCTION BOX	CONTRACTOR	CONTRACTOR	30+02.33	21.98'	LT	E-3
JB0302	18"x24" JUNCTION BOX	CONTRACTOR	CONTRACTOR	29+29.21	20.03'	RT	E-3
JB0303	18"x24" JUNCTION BOX	CONTRACTOR	CONTRACTOR	30+35.53	19.98'	RT	E-3
JB0401	18"x24" JUNCTION BOX	CONTRACTOR	CONTRACTOR	30+97.65	20.53'	LT	E-4
JB0402	18"x24" JUNCTION BOX	CONTRACTOR	CONTRACTOR	31+97.06	19.97'	LT	E-4
JB0403	18"x24" JUNCTION BOX	CONTRACTOR	CONTRACTOR	33+61.12	28.10'	LT	E-4
JB0404	18"x24" JUNCTION BOX	CONTRACTOR	CONTRACTOR	33+23.49	20.01'	RT	E-4
JB0501	18"x24" JUNCTION BOX	CONTRACTOR	CONTRACTOR	38+48.38	20.00'	LT	E-5
JB0502	18"x24" JUNCTION BOX	CONTRACTOR	CONTRACTOR	39+32.43	19.98'	LT	E-5
JB0503	18"x24" JUNCTION BOX	CONTRACTOR	CONTRACTOR	38+01.64	28.00'	RT	E-5
JB0504	18"x24" JUNCTION BOX	CONTRACTOR	CONTRACTOR	40+41.03	20.16'	RT	E-5
JB0601	18"x24" JUNCTION BOX	CONTRACTOR	CONTRACTOR	46+23.59	19.98'	LT	E-6
JB0602	18"x24" JUNCTION BOX	CONTRACTOR	CONTRACTOR	41+57.50	20.03'	LT	E-6
JB0603	18"x24" JUNCTION BOX	CONTRACTOR	CONTRACTOR	43+36.86	26.96'	RT	E-6
JB0701	18"x24" JUNCTION BOX	CONTRACTOR	CONTRACTOR	51+64.87	21.64'	LT	E-7
JB0702	18"x24" JUNCTION BOX	CONTRACTOR	CONTRACTOR	49.63+16	20.06'	RT	E-7
JB0703	18"x24" JUNCTION BOX	CONTRACTOR	CONTRACTOR	51+41.73	20.23'	RT	E-7
JB0801	18"x24" JUNCTION BOX	CONTRACTOR	CONTRACTOR	53+48.24	19.98'	RT	E-8
JB0802	18"x24" JUNCTION BOX	CONTRACTOR	CONTRACTOR	55+45.78	33.57'	RT	E-8
JB0901	18"x24" JUNCTION BOX	CONTRACTOR	CONTRACTOR	58+92.54	19.99'	LT	E-9
JB0902	18"x24" JUNCTION BOX	CONTRACTOR	CONTRACTOR	60+51.96	20.01'	LT	E-9
JB0903	18"x24" JUNCTION BOX	CONTRACTOR	CONTRACTOR	57+46.21	26.99'	RT	E-9
JB0904	18"x24" JUNCTION BOX	CONTRACTOR	CONTRACTOR	59+34.06	20.01'	RT	E-9
JB0905	18"x24" JUNCTION BOX	CONTRACTOR	CONTRACTOR	60+13.08	20.04'	RT	E-9
JB0906	18"x24" JUNCTION BOX	CONTRACTOR	CONTRACTOR	61+47.23	20.01'	RT	E-9

U-5606 DICKINSON AVENUE JUNCTION BOX SCHEDULE (CONT.)

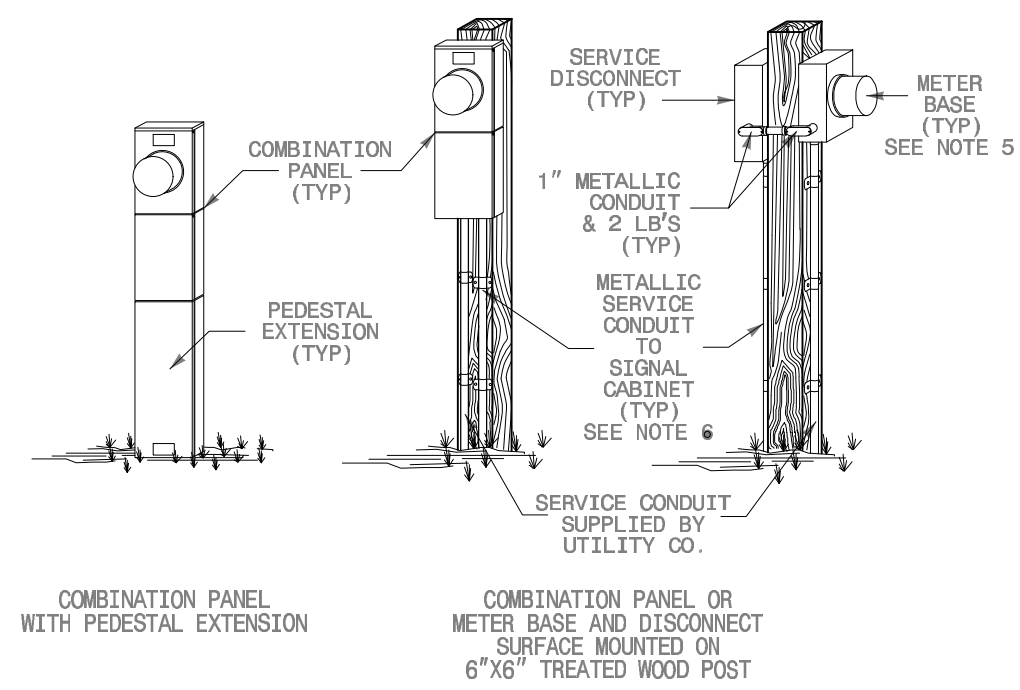
REF. NO.	DESCRIPTION	FURNISHED BY	INSTALLED BY	STATION -L-	OFFSET	SIDE	SHEET
JB0907	18"x24" JUNCTION BOX	CONTRACTOR	CONTRACTOR	62+22.78	20.00'	RT	E-9
JB1001	18"x24" JUNCTION BOX	CONTRACTOR	CONTRACTOR	65+10.11	19.99'	LT	E-10
JB1002	18"x24" JUNCTION BOX	CONTRACTOR	CONTRACTOR	66+01.75	20.59'	LT	E-10
JB1003	18"x24" JUNCTION BOX	CONTRACTOR	CONTRACTOR	66+60.84	24.71'	LT	E-10
JB1004	18"x24" JUNCTION BOX	CONTRACTOR	CONTRACTOR	67+55.55	21.00'	LT	E-10
JB1005	18"x24" JUNCTION BOX	CONTRACTOR	CONTRACTOR	63+05.26	20.02'	RT	E-10
JB1006	18"x24" JUNCTION BOX	CONTRACTOR	CONTRACTOR	63+86.65	24.16'	RT	E-10
JB1007	18"x24" JUNCTION BOX	CONTRACTOR	CONTRACTOR	64+66.80	22.00'	RT	E-10
JB1008	18"x24" JUNCTION BOX	CONTRACTOR	CONTRACTOR	66+06.53	20.01'	RT	E-10
JB1301	18"x24" JUNCTION BOX	CONTRACTOR	CONTRACTOR	74+00.73	28.35'	LT	E-13
JB1302	18"x24" JUNCTION BOX	CONTRACTOR	CONTRACTOR	74+87.39	26.12'	LT	E-13
JB1303	18"x24" JUNCTION BOX	CONTRACTOR	CONTRACTOR	75+70.99	21.84'	LT	E-13
JB1304	18"x24" JUNCTION BOX	CONTRACTOR	CONTRACTOR	76+62.27	21.83'	LT	E-13
JB1305	18"x24" JUNCTION BOX	CONTRACTOR	CONTRACTOR	77+83.92	22.31'	LT	E-13
JB1306	18"x24" JUNCTION BOX	CONTRACTOR	CONTRACTOR	78+04.98	42.58'	LT	E-13
JB1307	18"x24" JUNCTION BOX	CONTRACTOR	CONTRACTOR	74+85.70	12.56'	RT	E-13
JB1308	18"x24" JUNCTION BOX	CONTRACTOR	CONTRACTOR	75+26.70	19.84'	RT	E-13
JB1309	18"x24" JUNCTION BOX	CONTRACTOR	CONTRACTOR	76+13.99	19.84'	RT	E-13
JB1310	18"x24" JUNCTION BOX	CONTRACTOR	CONTRACTOR	77+02.61	21.86'	RT	E-13
JB1311	18"x24" JUNCTION BOX	CONTRACTOR	CONTRACTOR	77+81.39	21.75'	RT	E-13
JB1401	18"x24" JUNCTION BOX	CONTRACTOR	CONTRACTOR	80+16.87	17.89'	LT	E-14
JB1402	18"x24" JUNCTION BOX	CONTRACTOR	CONTRACTOR	82+07.59	60.36'	LT	E-14
JB1403	18"x24" JUNCTION BOX	CONTRACTOR	CONTRACTOR	78+56.98	21.77'	RT	E-14
JB1404	18"x24" JUNCTION BOX	CONTRACTOR	CONTRACTOR	78+94.74	21.51'	RT	E-14
JB1405	18"x24" JUNCTION BOX	CONTRACTOR	CONTRACTOR	80+59.63	22.03'	RT	E-14
JB1406	18"x24" JUNCTION BOX	CONTRACTOR	CONTRACTOR	81+61.75	16.10'	RT	E-14
JB1407	18"x24" JUNCTION BOX	CONTRACTOR	CONTRACTOR	81+95.76	16.52'	RT	E-14
JB1408	18"x24" JUNCTION BOX	CONTRACTOR	CONTRACTOR	82+60.12	16.53'	RT	E-14
JB1501	18"x24" JUNCTION BOX	CONTRACTOR	CONTRACTOR	84+24.51	18.13'	RT	E-15
JB1502	18"x24" JUNCTION BOX	CONTRACTOR	CONTRACTOR	84+52.77	22.60'	RT	E-15
JB1503	18"x24" JUNCTION BOX	CONTRACTOR	CONTRACTOR	85+06.67	30.77'	RT	E-15
JB1504	18"x24" JUNCTION BOX	CONTRACTOR	CONTRACTOR	85+95.69	30.84'	RT	E-15
JB1505	18"x24" JUNCTION BOX	CONTRACTOR	CONTRACTOR	86+98.17	26.84'	RT	E-15

REVISIONS

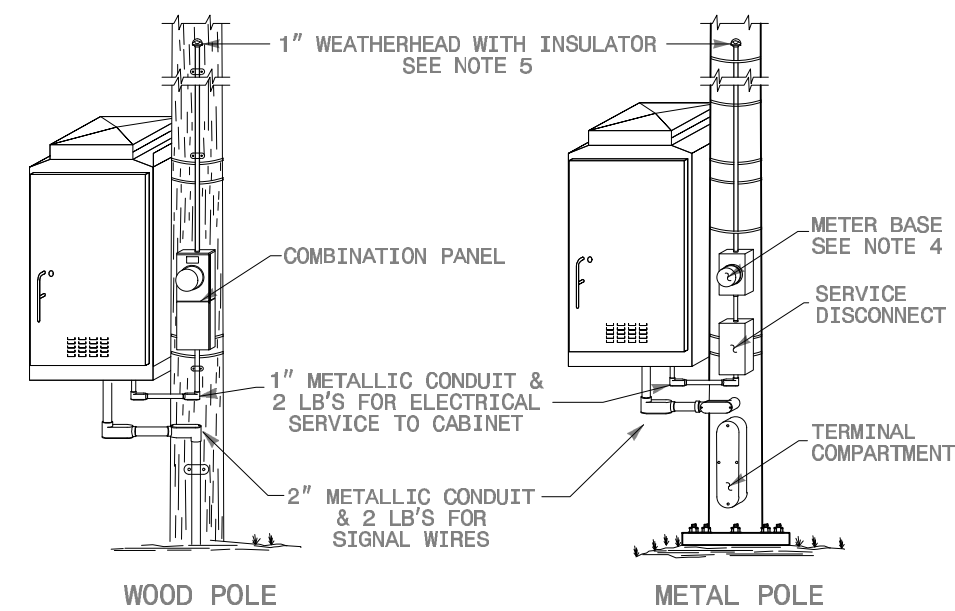


PROJECT REFERENCE NO. U-5606	SHEET NO. E-18
SHEET TITLE: LIGHTING & ELECTRICAL DETAILS	
<b>DOCUMENT NOT CONSIDERED FINAL UNLESS ALL SIGNATURES COMPLETED</b>	

**GROUND MOUNTED SERVICE EQUIPMENT OPTIONS FOR UNDERGROUND ELECTRICAL SERVICE**



**POLE MOUNTED SERVICE EQUIPMENT OPTIONS FOR OVERHEAD ELECTRICAL SERVICE**



**NOTES**

- LOCATE THE SERVICE EQUIPMENT NEAR THE SIGNAL CABINET IN A MANNER THAT WILL ALLOW EASY ACCESS TO THE SERVICE DISCONNECT. LOCATE SERVICE EQUIPMENT SO AS NOT TO OBSTRUCT SIGHT DISTANCE OF VEHICLES TURNING RIGHT ON RED.
- FOR GROUND MOUNTED ELECTRICAL SERVICE INSTALLATIONS WHEN POST MOUNTING IS CHOSEN, INSTALL TREATED WOOD POSTS A MINIMUM OF 3 FEET INTO THE GROUND.
- INSTALL ALL METER BASES MOUNTED IN PEDESTALS AT A HEIGHT NOT TO EXCEED 5 FEET AS MEASURED FROM THE CENTER OF THE METER. INSTALL ALL OTHER METER BASES AT A HEIGHT BETWEEN 4 FEET AND 5 FEET AS MEASURED FROM THE CENTER OF THE METER. SEAL ANY UNUSED MOUNTING HOLES ON COMBINATION PANELS, METER BASES AND SERVICE DISCONNECTS.
- INSTALL OVERHEAD ELECTRICAL SERVICE ON POLES AS SHOWN WHEN UNDERGROUND SOURCE IS NOT AN OPTION. COMBINATION PANELS, OR METER BASES AND SERVICE DISCONNECTS, MAY BE INSTALLED ON POLES WHEN POLE MOUNTED SIGNAL CABINETS ARE REQUIRED FOR THE INSTALLATION. DO NOT ROUTE UNUSED OVERHEAD ELECTRICAL SERVICE CONDUCTOR INSIDE OF METAL POLES.
- TYPICAL POINT OF DELIVERY FOR UNDERGROUND SERVICE IS INSIDE OF METER BASE. TYPICAL POINT OF DELIVERY FOR OVERHEAD SERVICE IS AT THE WEATHERHEAD ENTRANCE AT THE TOP OF THE SERVICE RISER.
- THE ABOVE GROUND PORTION OF ELECTRICAL SERVICE CONDUIT TO THE SIGNAL CABINET MUST BE METALLIC. THE BELOW GROUND PORTION MAY BE METALLIC OR PVC.

STATE OF NORTH CAROLINA  
DEPT. OF TRANSPORTATION  
DIVISION OF HIGHWAYS  
RALEIGH, N.C.

ROADWAY STANDARD DRAWING FOR  
**ELECTRICAL SERVICE OPTIONS**

SHEET 1 OF 2  
**1700.01**

1  
E-18 ELECTRICAL SERVICE OPTIONS N.T.S.

PANEL: LC1									
VOLTAGE: 120/240		PANEL BUS: 200 AMPS							
PHASE WIRES: 1Ø, 3W		MAIN: 200 BREAKER							
SCCR (AMPS):									
SOURCE: GUC TRXM									
DESCRIPTION	VA	CB	CKT	A	B	CKT	CB	VA	DESCRIPTION
RECEPTACLES	180	20/1P	1	4.5		2			SPACE
SPACE			3		0.0	4			SPACE
SPACE			5	0.0		6			SPACE
SPACE			7		0.0	8			SPACE
			TOTALS	4.5	0.0	AMPS			
LOAD CALCULATIONS:		SUBTOTAL (VA): 180							
		+25% PER NEC (VA): 45							
		TOTAL (VA): 225 @ 240V, 1Ø = 1 AMPS							

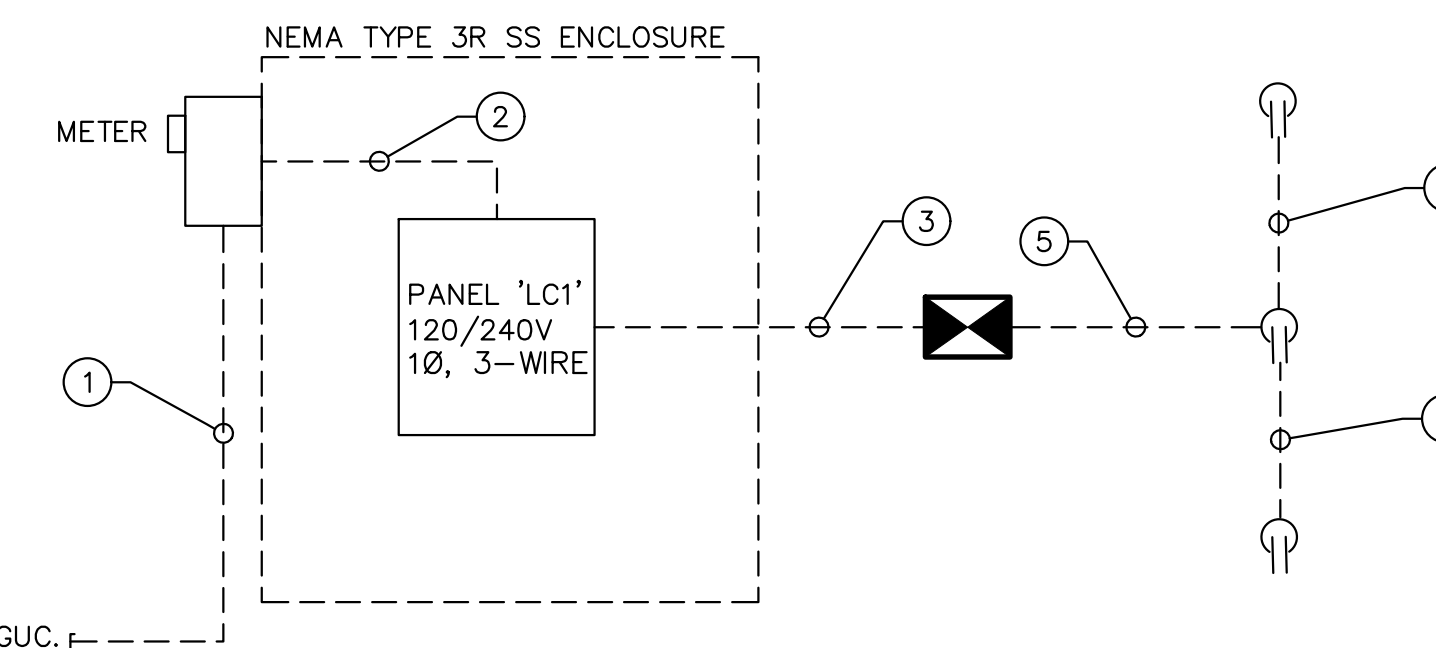
2  
E-18 PANEL SCHEDULE - PANEL "LC1"

PANEL: LC2									
VOLTAGE: 120/240		PANEL BUS: 200 AMPS							
PHASE WIRES: 1Ø, 3W		MAIN: 200 BREAKER							
SCCR (AMPS):									
SOURCE: GUC TRXM									
DESCRIPTION	VA	CB	CKT	A	B	CKT	CB	VA	DESCRIPTION
RECEPTACLES	180	20/1P	1	6.0		2			RECEPTACLES
SPACE			3		0.0	4			SPACE
SPACE			5	0.0		6			SPACE
SPACE			7		0.0	8			SPACE
			TOTALS	6.0	0.0	AMPS			
LOAD CALCULATIONS:		SUBTOTAL (VA): 180							
		+25% PER NEC (VA): 45							
		TOTAL (VA): 225 @ 240V, 1Ø = 1 AMPS							

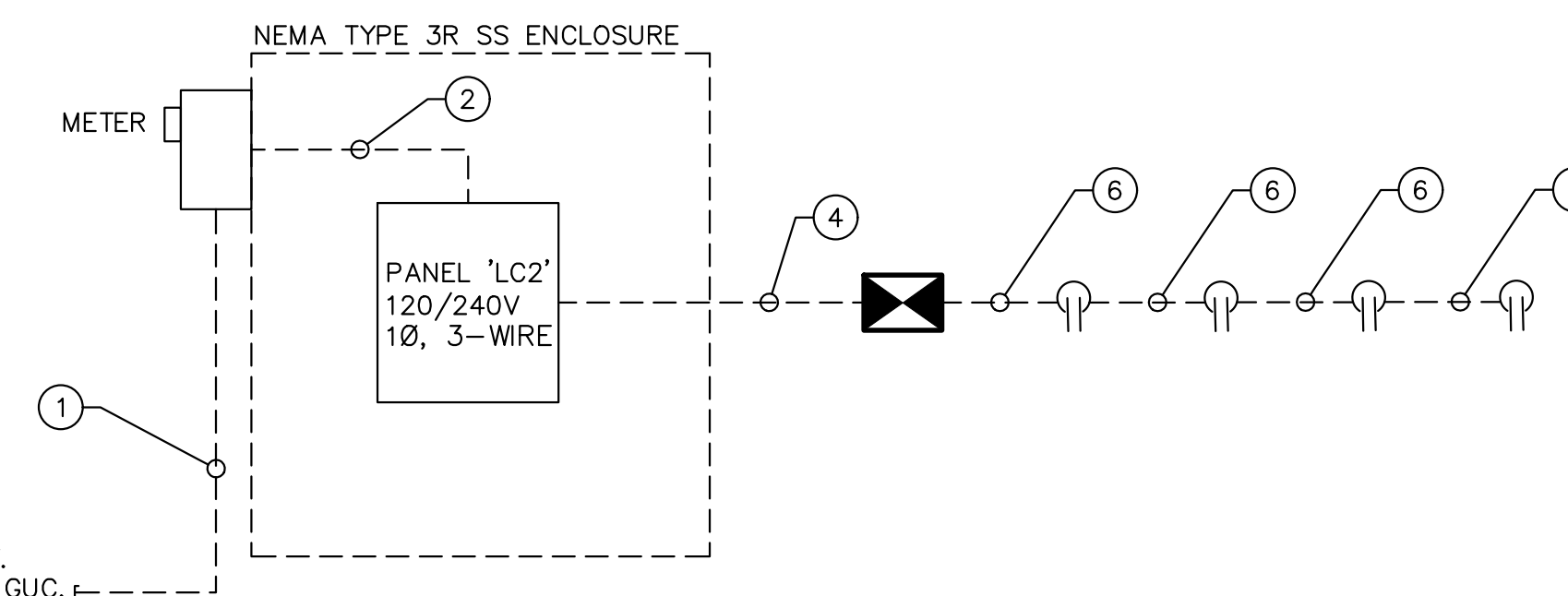
4  
E-18 PANEL SCHEDULE - PANEL "B"

**CONDUIT AND CONDUCTOR SCHEDULE**

- PROVIDE (1) 2" RGC. CONDUCTORS PROVIDED BY GUC.
- PROVIDE (1) 2" RGC W/ (3) 1/0 AWG CONDUCTORS AND (1) 1/0 AWG GROUND.
- PROVIDE (1) 2" RGC. RGC TO PVC ADAPTER. (1) 2" PVC CONDUIT W/ (4) #12 AWG CONDUCTORS AND (1) #12 AWG GND.
- PROVIDE (1) 2" RGC. RGC TO PVC ADAPTER. (1) 2" PVC CONDUIT W/ (2) #12 AWG CONDUCTORS AND (1) #12 AWG GND.
- PROVIDE (1) 3/4" PVC CONDUIT W/ (4) #12 AWG CONDUCTORS AND (1) #12 AWG GND.
- PROVIDE (1) 3/4" PVC CONDUIT W/ (2) #12 AWG CONDUCTORS AND (1) #12 AWG GND.



3  
E-18 LC1 ONE LINE DIAGRAM-POWER



5  
E-18 LC2 ONE LINE DIAGRAM-POWER

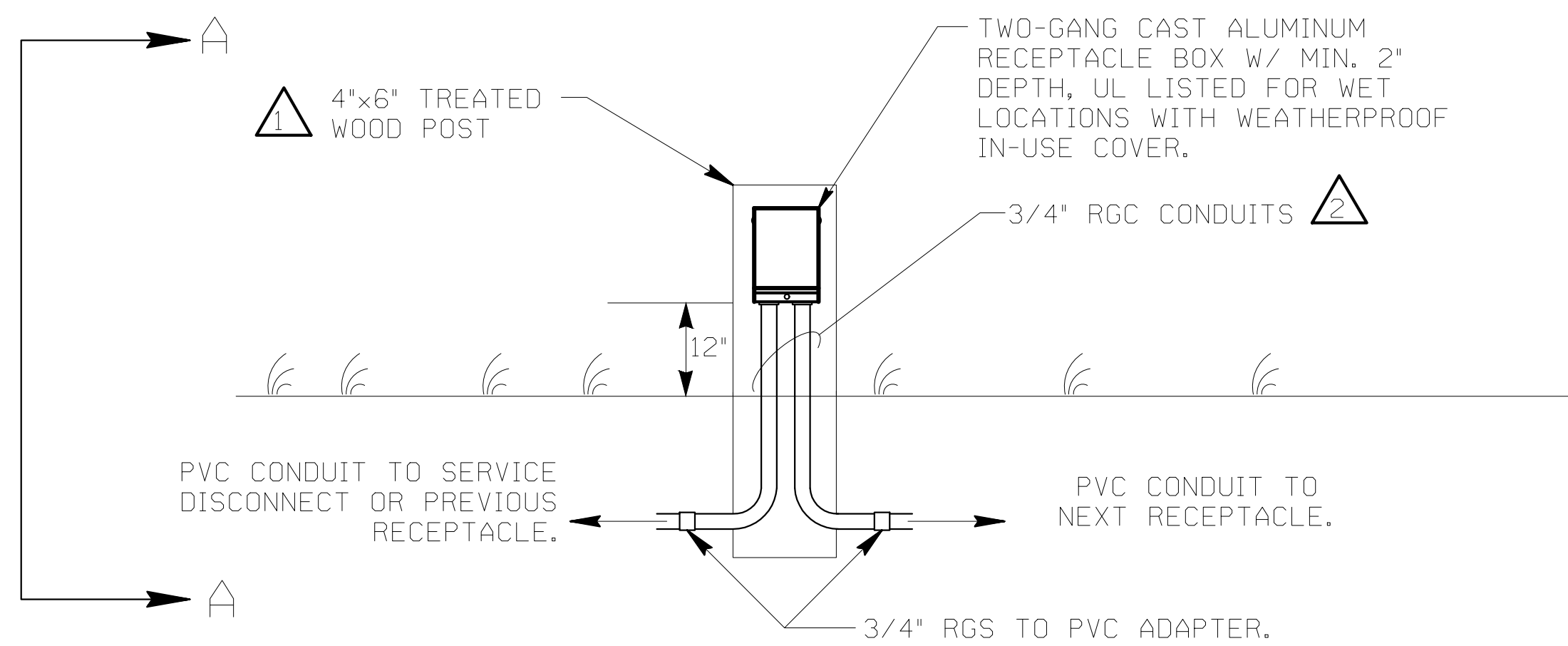
REVISIONS



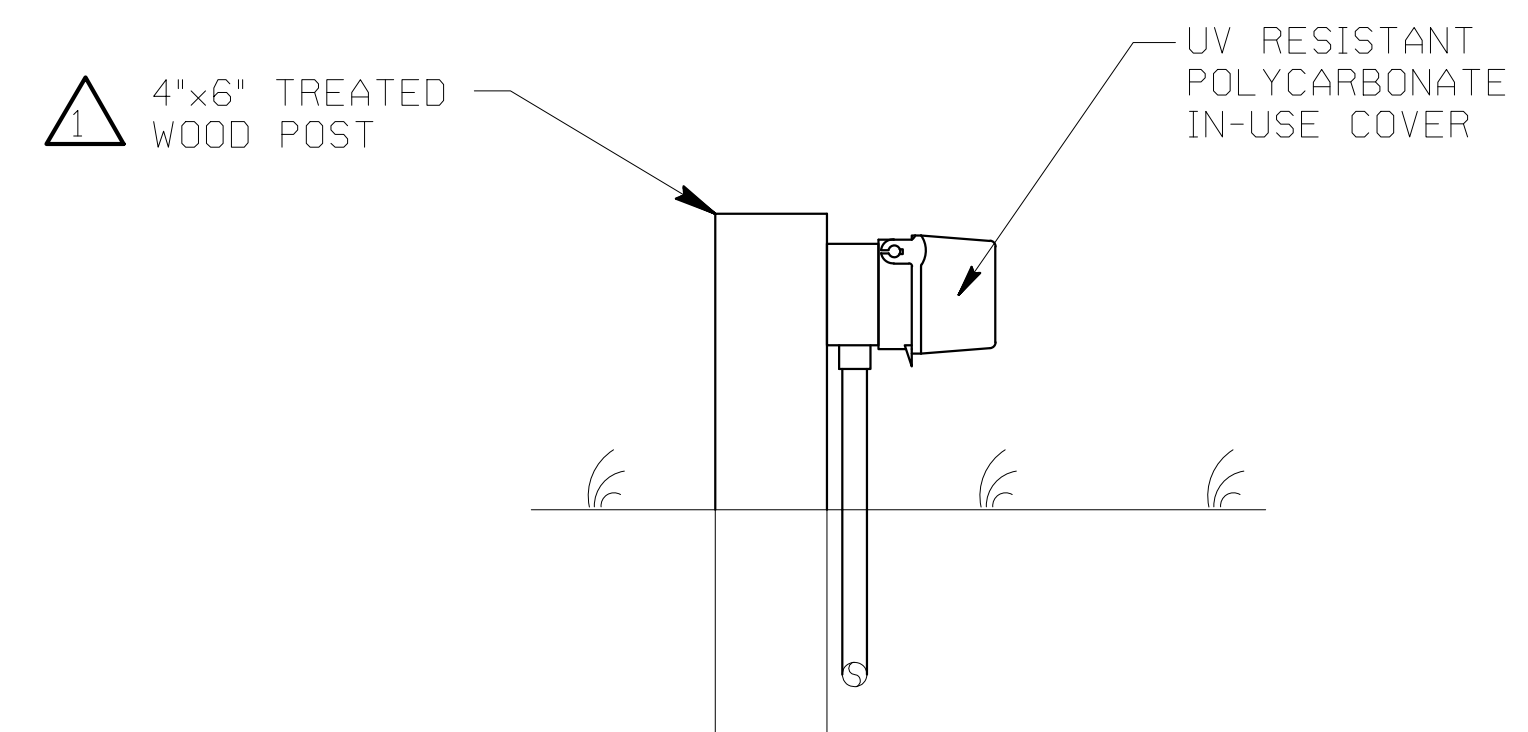


**DOCUMENT NOT CONSIDERED FINAL  
UNLESS ALL SIGNATURES COMPLETED**

REVISIONS



POST MOUNTED RECEPTACLE  
SEE SHEET E-13 AND E-14 FOR LOCATIONS



SECTION A-A

**NOTES:**

- 1 USE TREATED WOODEN POST RATED FOR GROUND CONTACT. EMBED WOOD POST IN GROUND A MINIMUM OF 18". BACK FILL AND COMPACT FILL MATERIAL TO SECURE POST IN GROUND.
- 2 SECURELY STRAP CONDUIT TO WOOD POST PER NEC SPACING REQUIREMENTS.