

5/28/99

### PROFILE SHOWN IS BASED ON STATIONING ALONG PROPOSED WATER LINE ALIGNMENT ALONG ROADWAY ALIGNMENT -L- (SEE SHEET UC-12)

PREPARED IN THE OFFICE OF:



PROJECT REFERENCE NO. SHEET NO.

U-5606 UC-22

DESIGNED BY: JRG

DRAWN BY: TK & CB

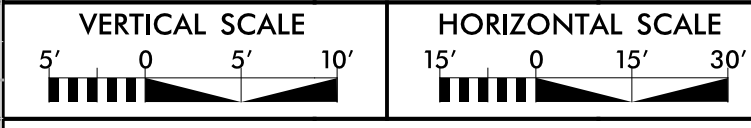
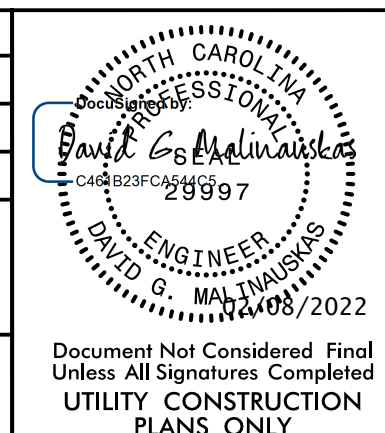
CHECKED BY: DGM

APPROVED BY: DGM

REVISED:

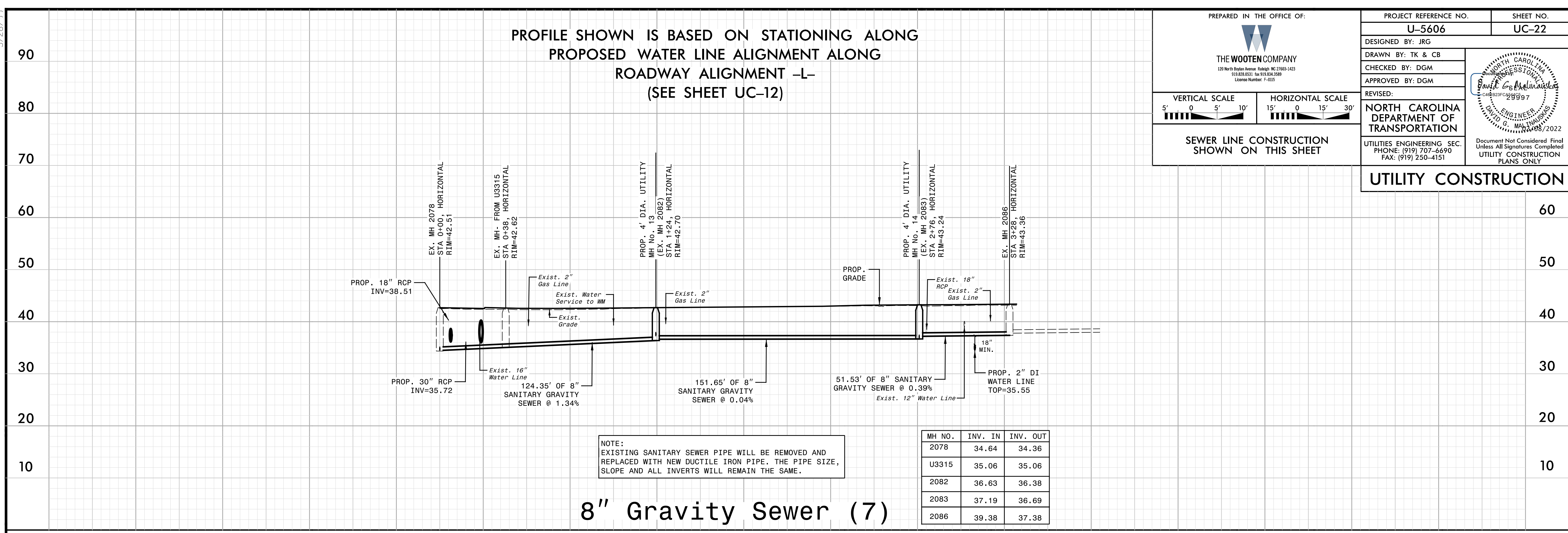
**NORTH CAROLINA  
DEPARTMENT OF  
TRANSPORTATION**

UTILITIES ENGINEERING SEC.  
PHONE: (919) 707-6690  
FAX: (919) 250-4151



SEWER LINE CONSTRUCTION  
SHOWN ON THIS SHEET

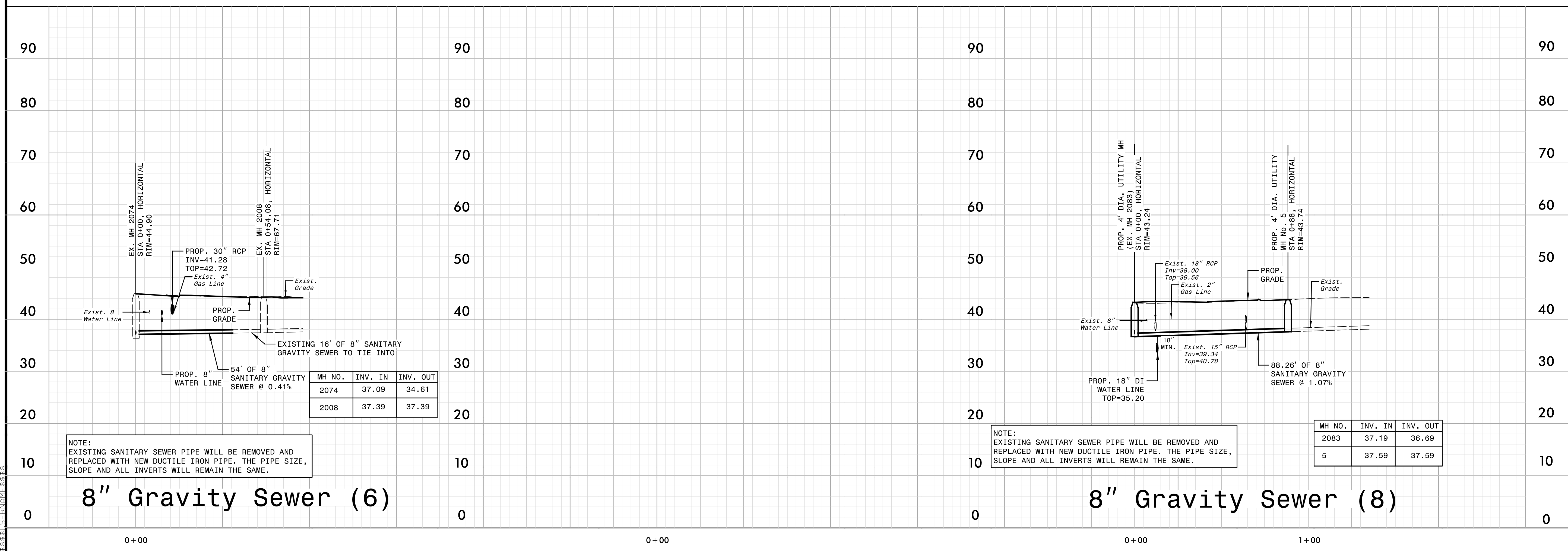
### UTILITY CONSTRUCTION



NOTE:  
EXISTING SANITARY SEWER PIPE WILL BE REMOVED AND  
REPLACED WITH NEW DUCTILE IRON PIPE. THE PIPE SIZE,  
SLOPE AND ALL INVERTS WILL REMAIN THE SAME.

MH NO.	INV. IN	INV. OUT
2078	34.64	34.36
U3315	35.06	35.06
2082	36.63	36.38
2083	37.19	36.69
2086	39.38	37.38

### 8" Gravity Sewer (7)



NOTE:  
EXISTING SANITARY SEWER PIPE WILL BE REMOVED AND  
REPLACED WITH NEW DUCTILE IRON PIPE. THE PIPE SIZE,  
SLOPE AND ALL INVERTS WILL REMAIN THE SAME.

NOTE:  
EXISTING SANITARY SEWER PIPE WILL BE REMOVED AND  
REPLACED WITH NEW DUCTILE IRON PIPE. THE PIPE SIZE,  
SLOPE AND ALL INVERTS WILL REMAIN THE SAME.

MH NO.	INV. IN	INV. OUT
2074	37.09	34.61
2008	37.39	37.39

MH NO.	INV. IN	INV. OUT
2083	37.19	36.69
5	37.59	37.59

### 8" Gravity Sewer (6)

### 8" Gravity Sewer (8)

5/28/99