

5/14/2022

EXISTING SEWER MANHOLE INFORMATION	
MH 2078	INV: 34.64 TOP: 42.51
MH 2-U3315	INV: 35.45 TOP: 42.45
MH 2074	INV: 37.09 TOP: 44.90
MH 2008	INV: 37.39 TOP: 44.90
MH 2086	INV: 39.37 TOP: 43.36

PROPOSED SEWER MANHOLE INFORMATION	
MH 2082	INV: 34.64 TOP: 42.70
MH 2083	INV: 37.19 TOP: 43.24
MH 12	INV: 37.59 TOP: 43.74

PI Sta	D	L	T	R	SE	RO
84+43.48	12' 09" 32.2" (LT)	53.05'	26.63'	250.00'	NC	NONE
84+95.90	11' 52" 31.1" (RT)	51.82'	26.00'	250.00'	NC	NONE
88+57.73	49' 09" 48.7" (RT)	85.81'	45.75'	100.00'	EXISTING	EXISTING

PREPARED IN THE OFFICE OF:

THE WOOTEN COMPANY
120 North Roper Avenue Raleigh, NC 27603-1423
919.876.0311 Fax: 919.876.3109
License Number: F-0115

PROJECT REFERENCE NO. **U-5606** SHEET NO. **UC-12**

DESIGNED BY: JRG
DRAWN BY: TK & CB
CHECKED BY: DGM
APPROVED BY: DGM

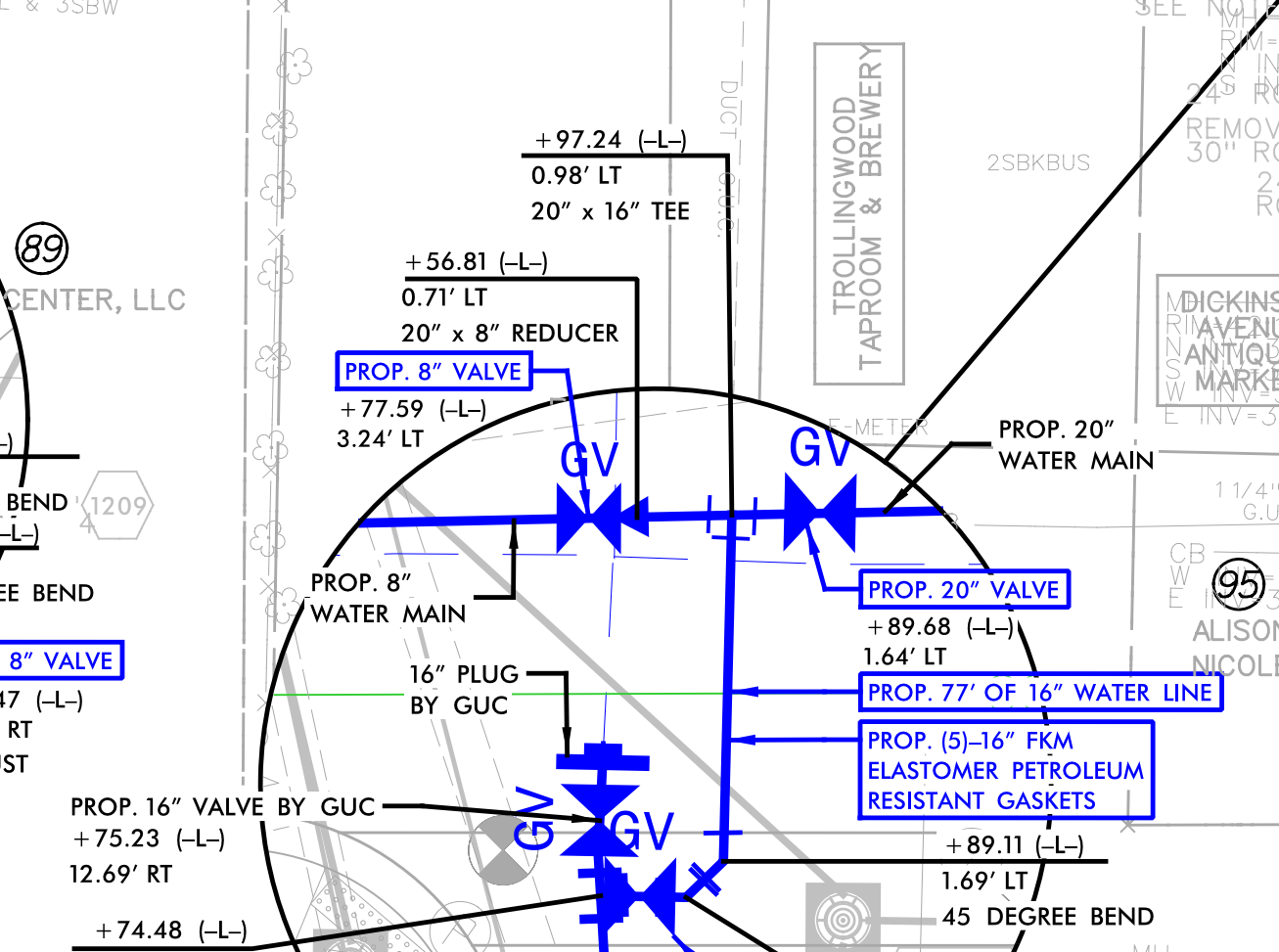
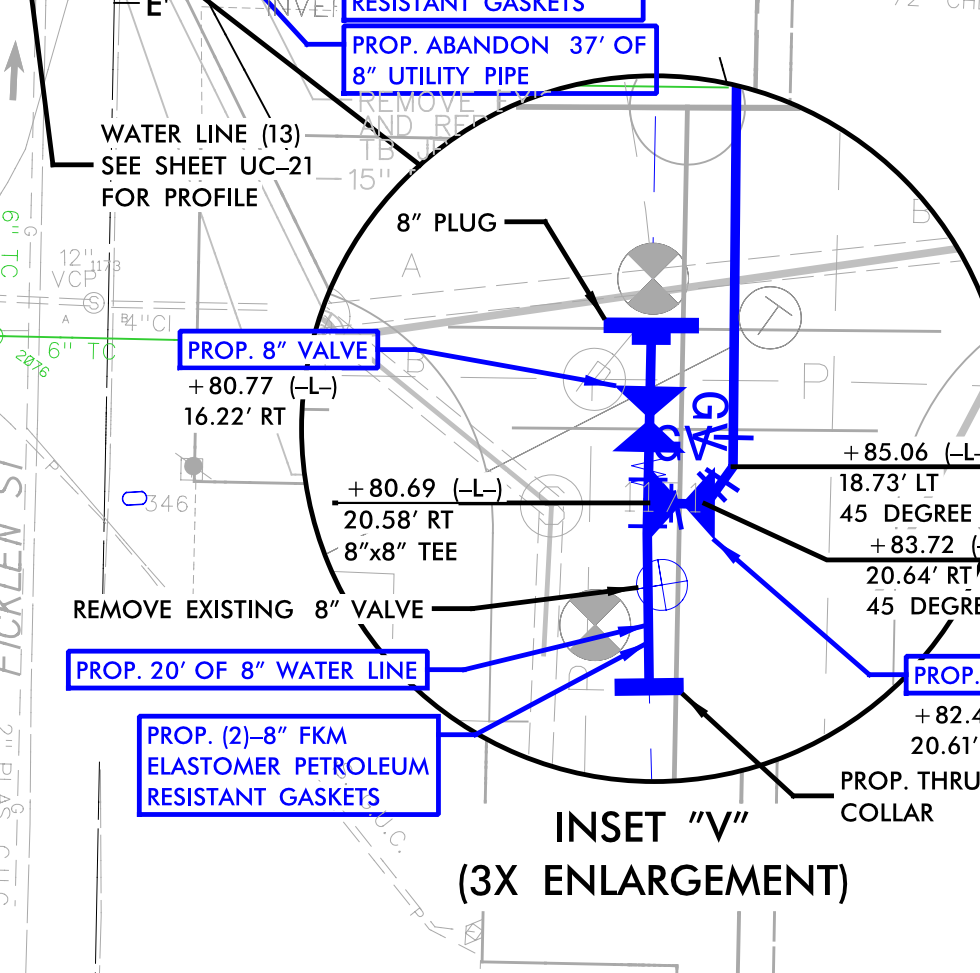
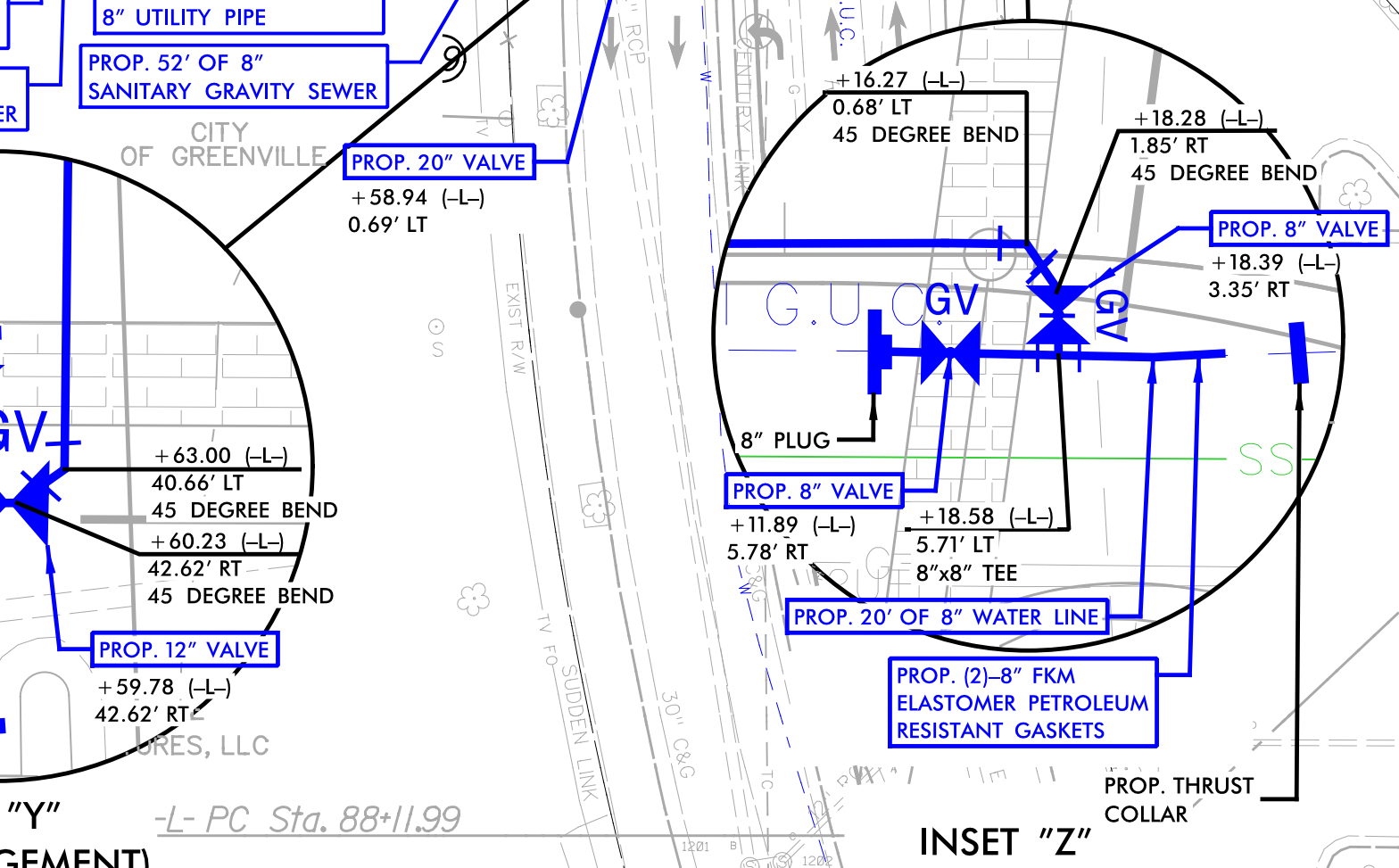
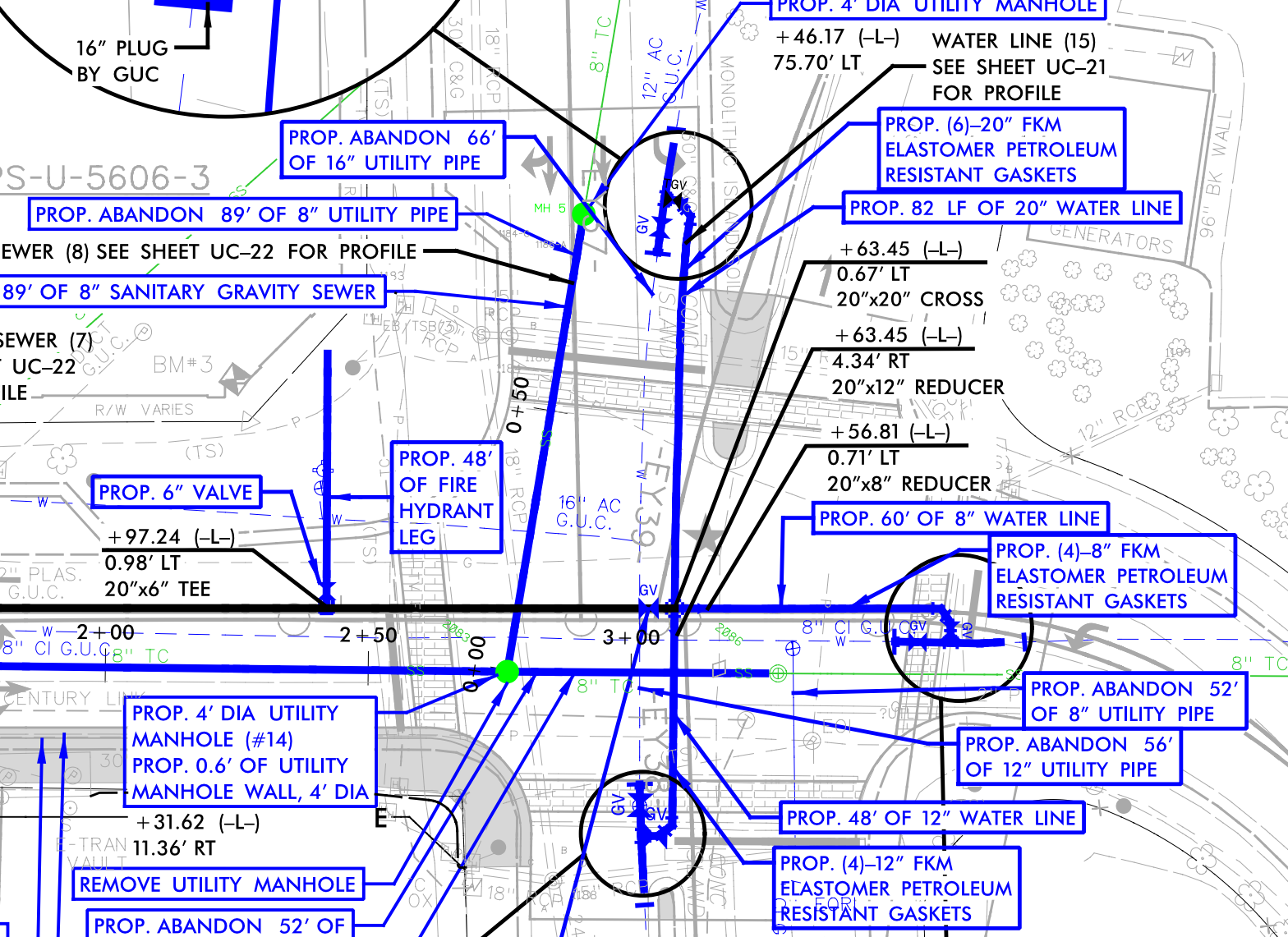
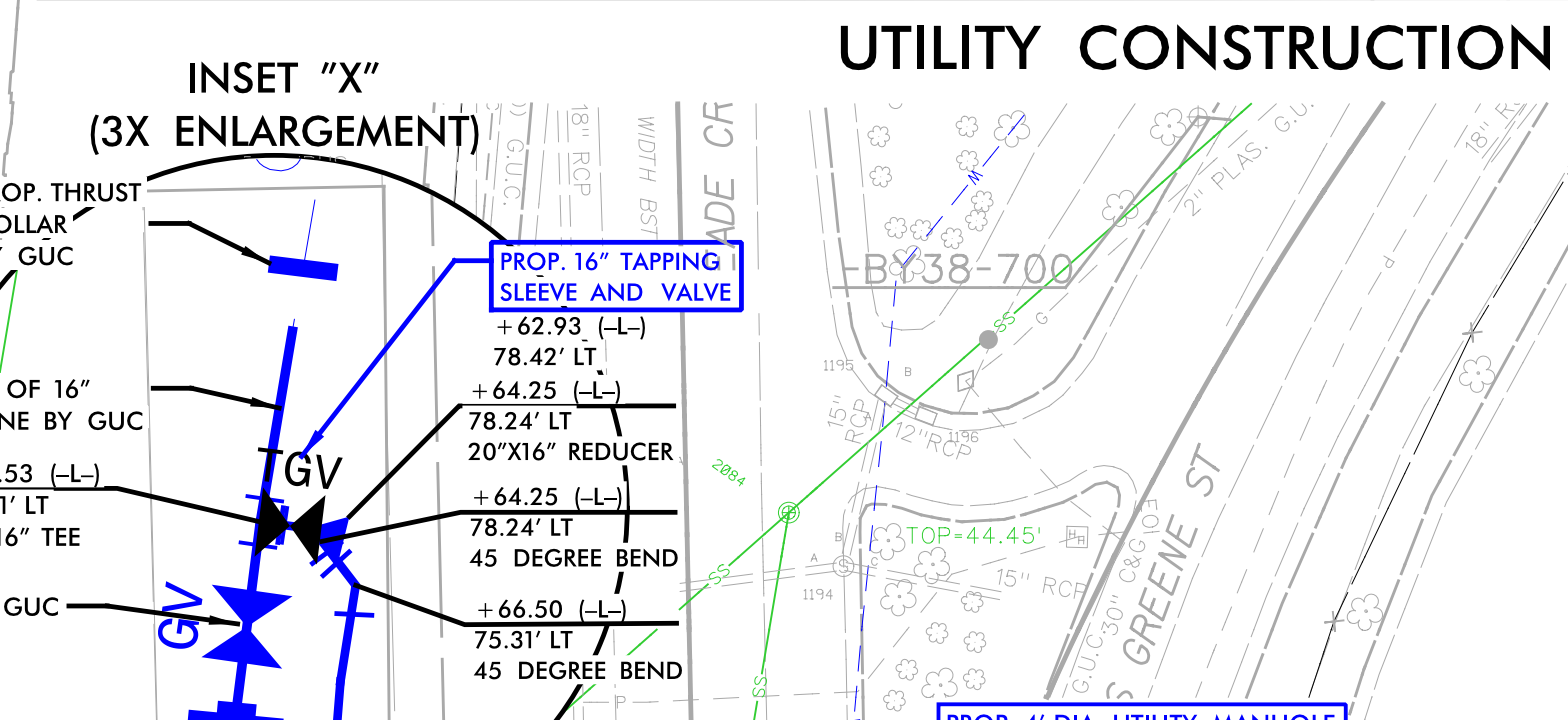
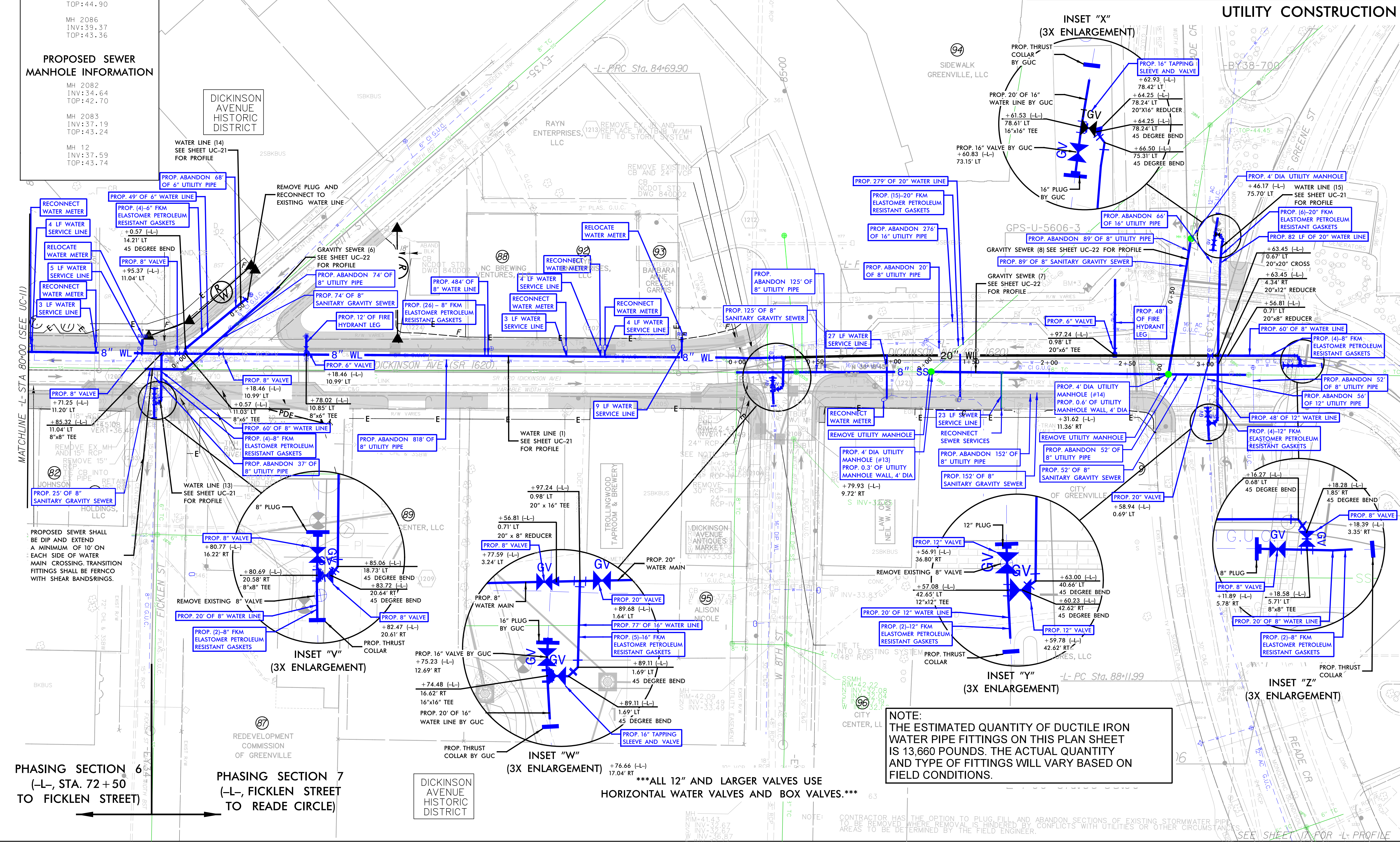
REVISIONS:

NORTH CAROLINA DEPARTMENT OF TRANSPORTATION
UTILITIES ENGINEERING SEC.
PHONE: (919) 707-6690
FAX: (919) 250-4151

Document Not Considered Final Unless All Signatures Completed
UTILITY CONSTRUCTION PLANS ONLY

VERTICAL SCALE: 1" = 10'
HORIZONTAL SCALE: 1" = 15'

WATER LINE AND SEWER LINE CONSTRUCTION SHOWN ON THIS SHEET



PHASING SECTION 6
(-L-, STA. 72 + 50 TO FICKLEN STREET)

PHASING SECTION 7
(-L-, FICKLEN STREET TO READE CIRCLE)

DICKINSON AVENUE HISTORIC DISTRICT

NOTE:
THE ESTIMATED QUANTITY OF DUCTILE IRON WATER PIPE FITTINGS ON THIS PLAN SHEET IS 13,660 POUNDS. THE ACTUAL QUANTITY AND TYPE OF FITTINGS WILL VARY BASED ON FIELD CONDITIONS.

*****ALL 12" AND LARGER VALVES USE HORIZONTAL WATER VALVES AND BOX VALVES.*****

CONTRACTOR HAS THE OPTION TO PLUG, FILL AND ABANDON SECTIONS OF EXISTING STORMWATER PIPE TO BE REMOVED WHERE REMOVAL IS HINDERED BY CONFLICTS WITH UTILITIES OR OTHER CIRCUMSTANCES. AREAS TO BE DETERMINED BY THE FIELD ENGINEER.