

EXISTING SEWER MANHOLE INFORMATION	
MH 2041	INV: 62.35 TOP: 66.44
PROPOSED SEWER MANHOLE INFORMATION	
MH 2	INV: 62.41 TOP: 66.64

PHASING SECTION 5B (-L-, STA. 66+00 TO STA. 72+50)		PHASING SECTION 6 (-L-, STA. 72+50 TO FICKLEN STREET)	
PI Sta 73+58.90 D = 0° 37' 37.7" (LT) L = 131.35' T = 65.68' R = 12,000.00' SE = EXISTING RO = EXISTING	PI Sta 77+62.86 D = 0° 30' 57.6" (RT) L = 90.06' T = 45.03' R = 10,000.00' SE = NC RO = NONE	PI Sta 79+26.57 D = 0° 54' 23.7" (LT) L = 237.35' T = 118.67' R = 15,000.00' SE = NC RO = NONE	PI Sta 11+54.24 D = 46° 54' 37.2" (LT) L = 102.34' T = 54.24' R = 125.00' SE = RC RO = NONE

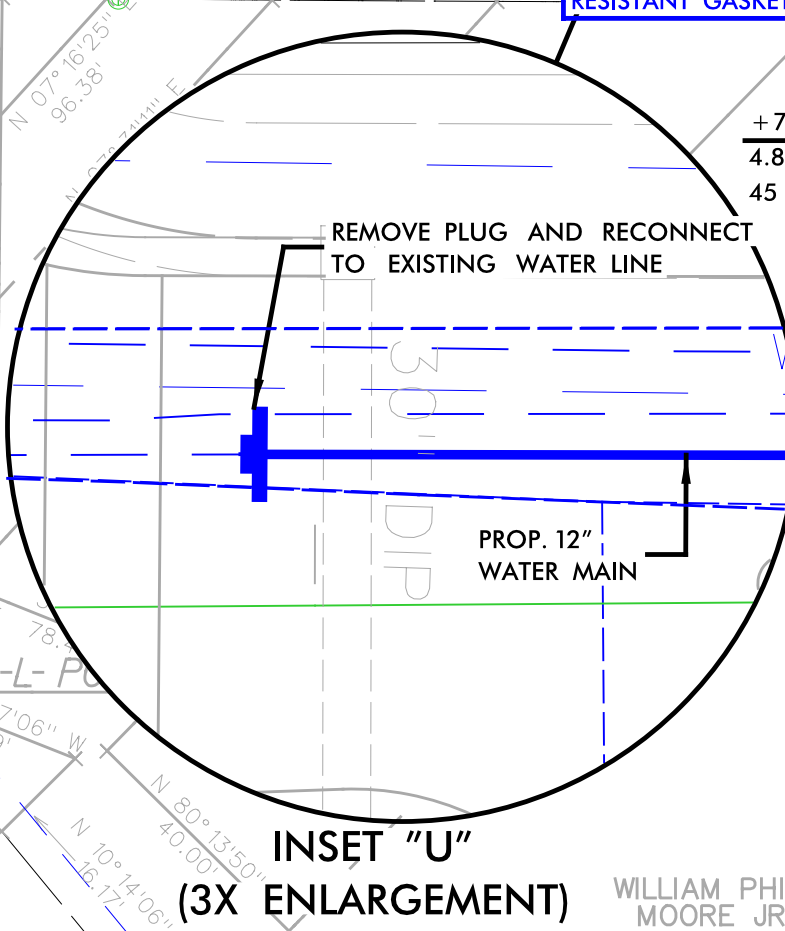
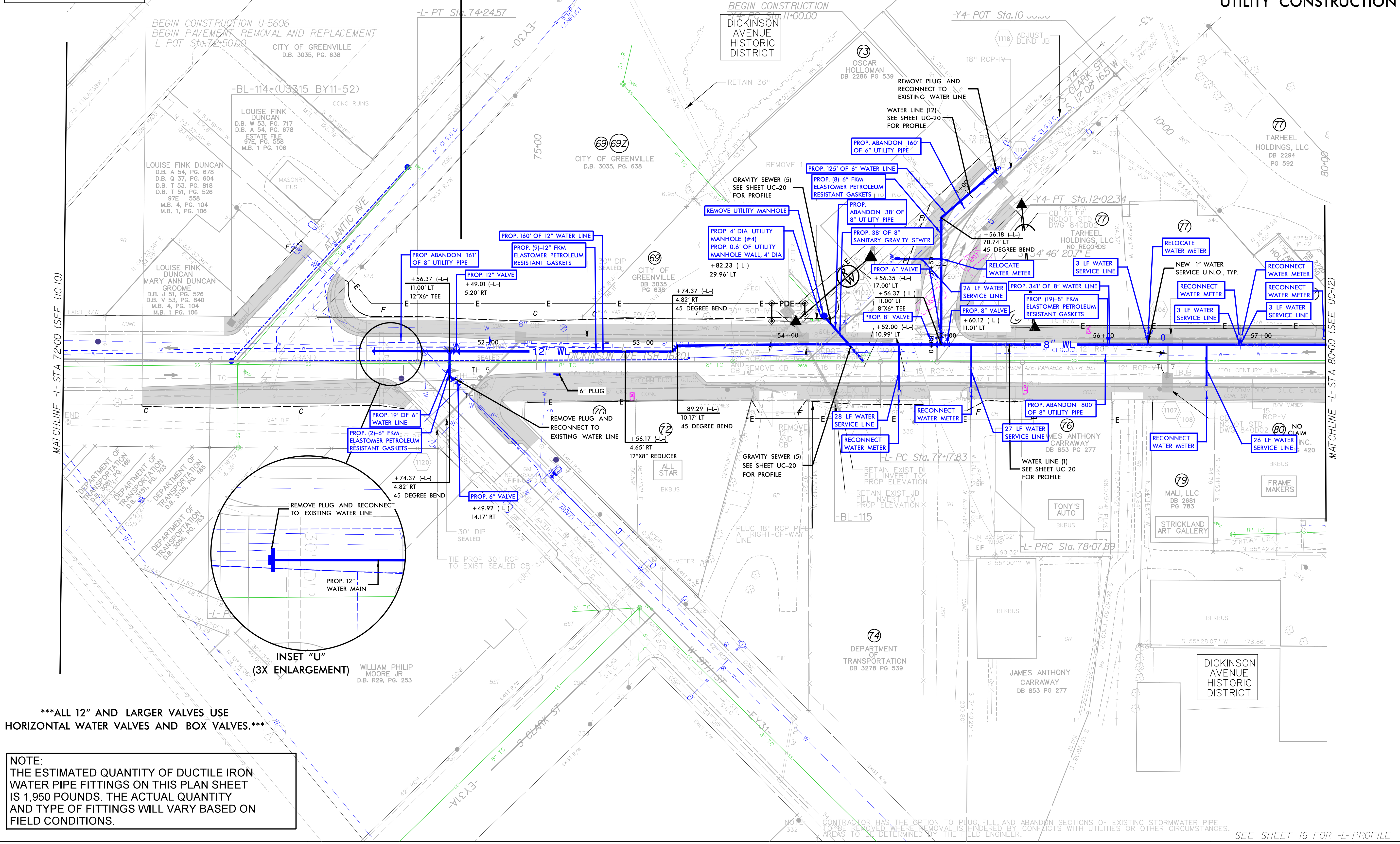
PREPARED IN THE OFFICE OF:

THE WOOTEN COMPANY
120 North Roper Avenue Raleigh, NC 27603-1423
919.876.0311 Fax: 919.876.3109
License Number: F-0115

PROJECT REFERENCE NO. U-5606	SHEET NO. UC-11
DESIGNED BY: JRG	
DRAWN BY: TK & CB	
CHECKED BY: DGM	
APPROVED BY: DGM	NORTH CAROLINA DEPARTMENT OF TRANSPORTATION UTILITIES ENGINEERING SEC. PHONE: (919) 707-6690 FAX: (919) 250-4151
REVISED:	

VERTICAL SCALE: 1" = 5'
HORIZONTAL SCALE: 1" = 15'

WATER LINE AND SEWER LINE CONSTRUCTION SHOWN ON THIS SHEET



ALL 12" AND LARGER VALVES USE HORIZONTAL WATER VALVES AND BOX VALVES.

NOTE:
THE ESTIMATED QUANTITY OF DUCTILE IRON WATER PIPE FITTINGS ON THIS PLAN SHEET IS 1,950 POUNDS. THE ACTUAL QUANTITY AND TYPE OF FITTINGS WILL VARY BASED ON FIELD CONDITIONS.

CONTRACTOR HAS THE OPTION TO PLUG, FILL AND ABANDON SECTIONS OF EXISTING STORMWATER PIPE TO BE REMOVED WHERE REMOVAL IS HINDERED BY CONFLICTS WITH UTILITIES OR OTHER CIRCUMSTANCES. AREAS TO BE DETERMINED BY THE FIELD ENGINEER.

SEE SHEET 16 FOR -L- PROFILE