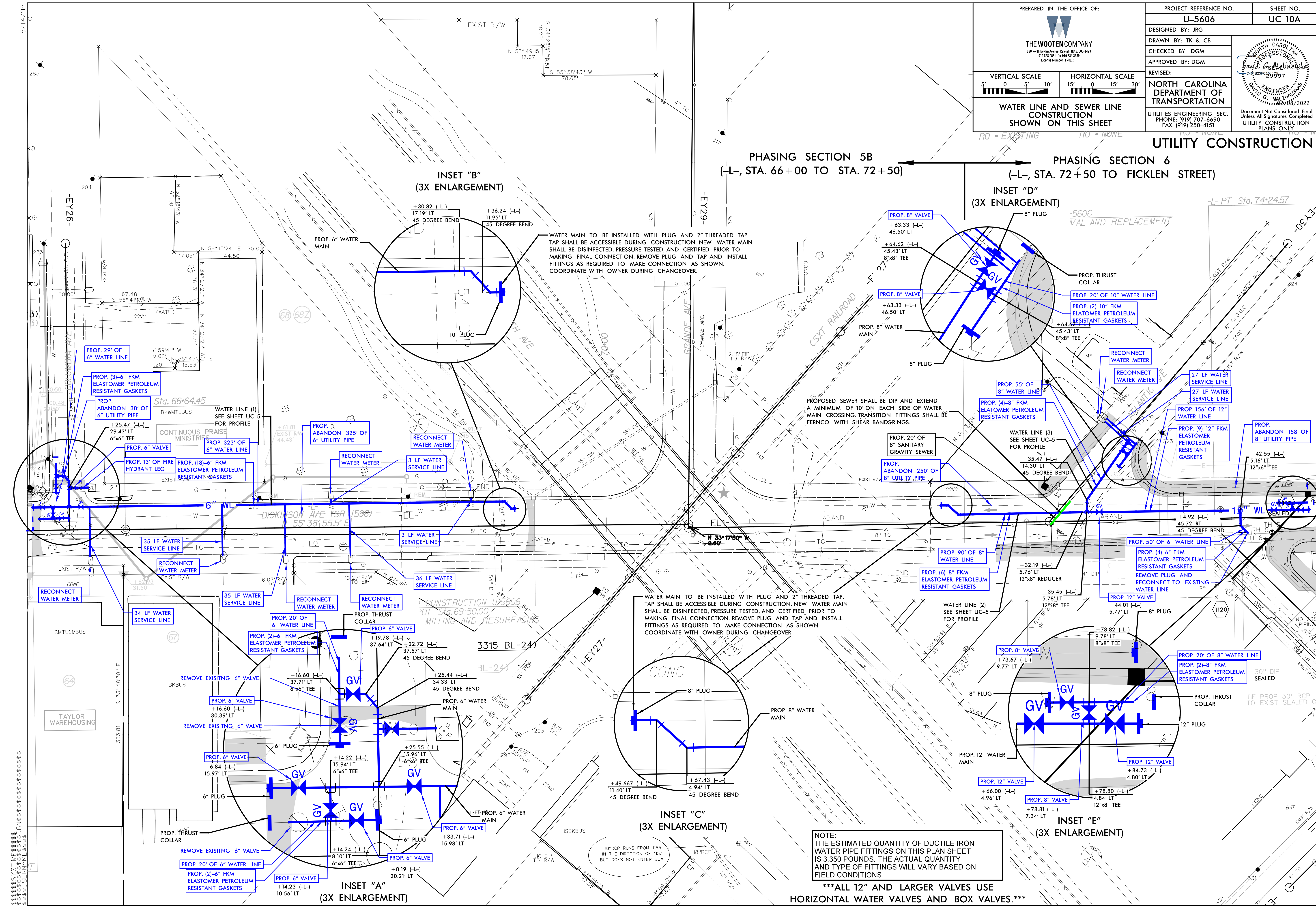


WATER LINE AND SEWER LINE CONSTRUCTION SHOWN ON THIS SHEET

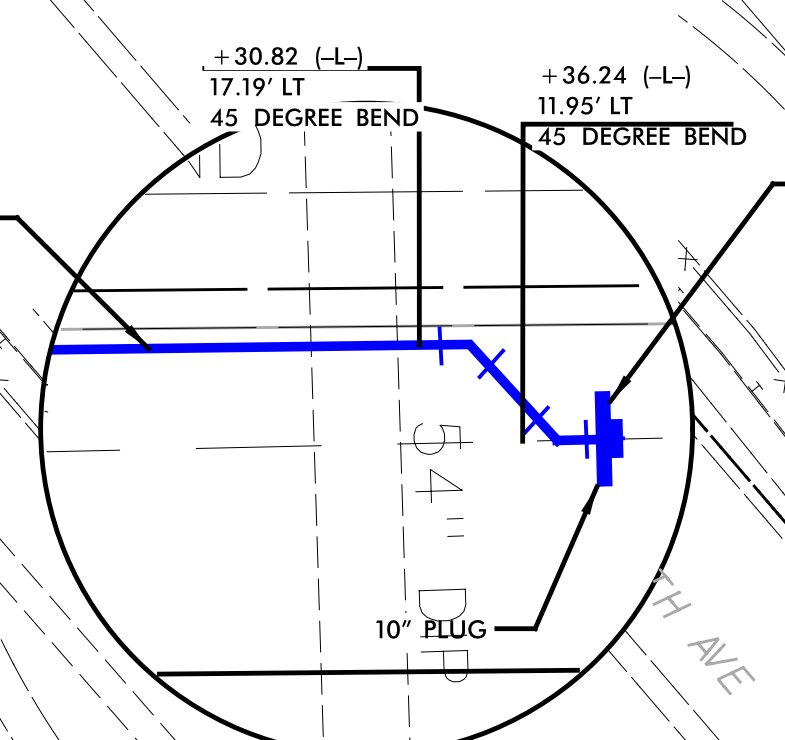
UTILITY CONSTRUCTION

PHASING SECTION 5B
(-L-, STA. 66+00 TO STA. 72+50)

PHASING SECTION 6
(-L-, STA. 72+50 TO FICKLEN STREET)

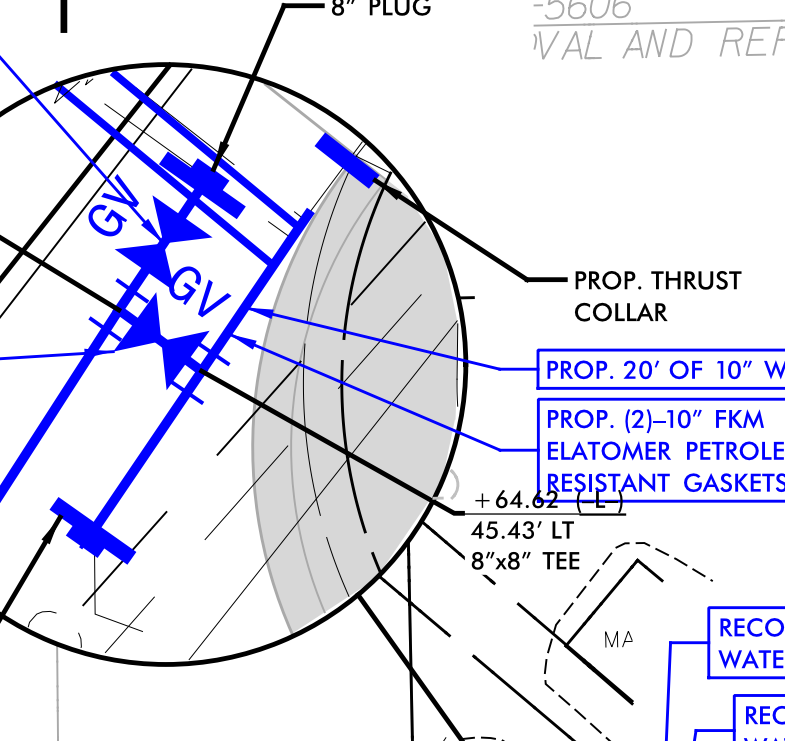


INSET "B"
(3X ENLARGEMENT)



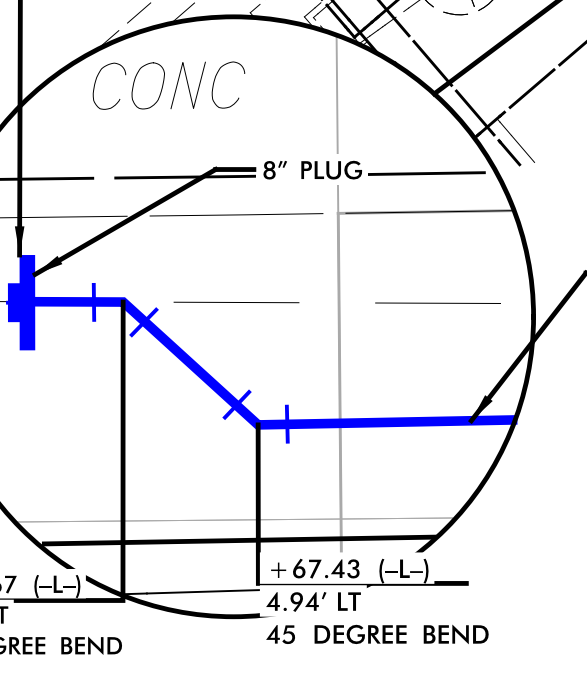
WATER MAIN TO BE INSTALLED WITH PLUG AND 2" THREADED TAP. TAP SHALL BE ACCESSIBLE DURING CONSTRUCTION. NEW WATER MAIN SHALL BE DISINFECTED, PRESSURE TESTED, AND CERTIFIED PRIOR TO MAKING FINAL CONNECTION. REMOVE PLUG AND TAP AND INSTALL FITTINGS AS REQUIRED TO MAKE CONNECTION AS SHOWN. COORDINATE WITH OWNER DURING CHANGEOVER.

INSET "D"
(3X ENLARGEMENT)



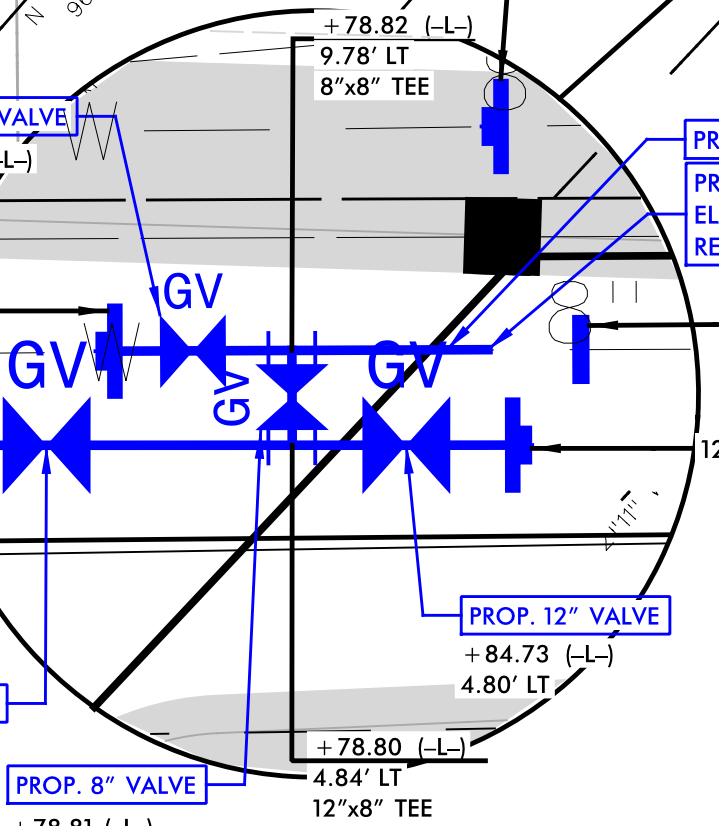
PROPOSED SEWER SHALL BE DIP AND EXTEND A MINIMUM OF 10' ON EACH SIDE OF WATER MAIN. CROSSING TRANSITION FITTINGS SHALL BE FERROCEMENT WITH SHEAR BANDS/RINGS.

INSET "C"
(3X ENLARGEMENT)

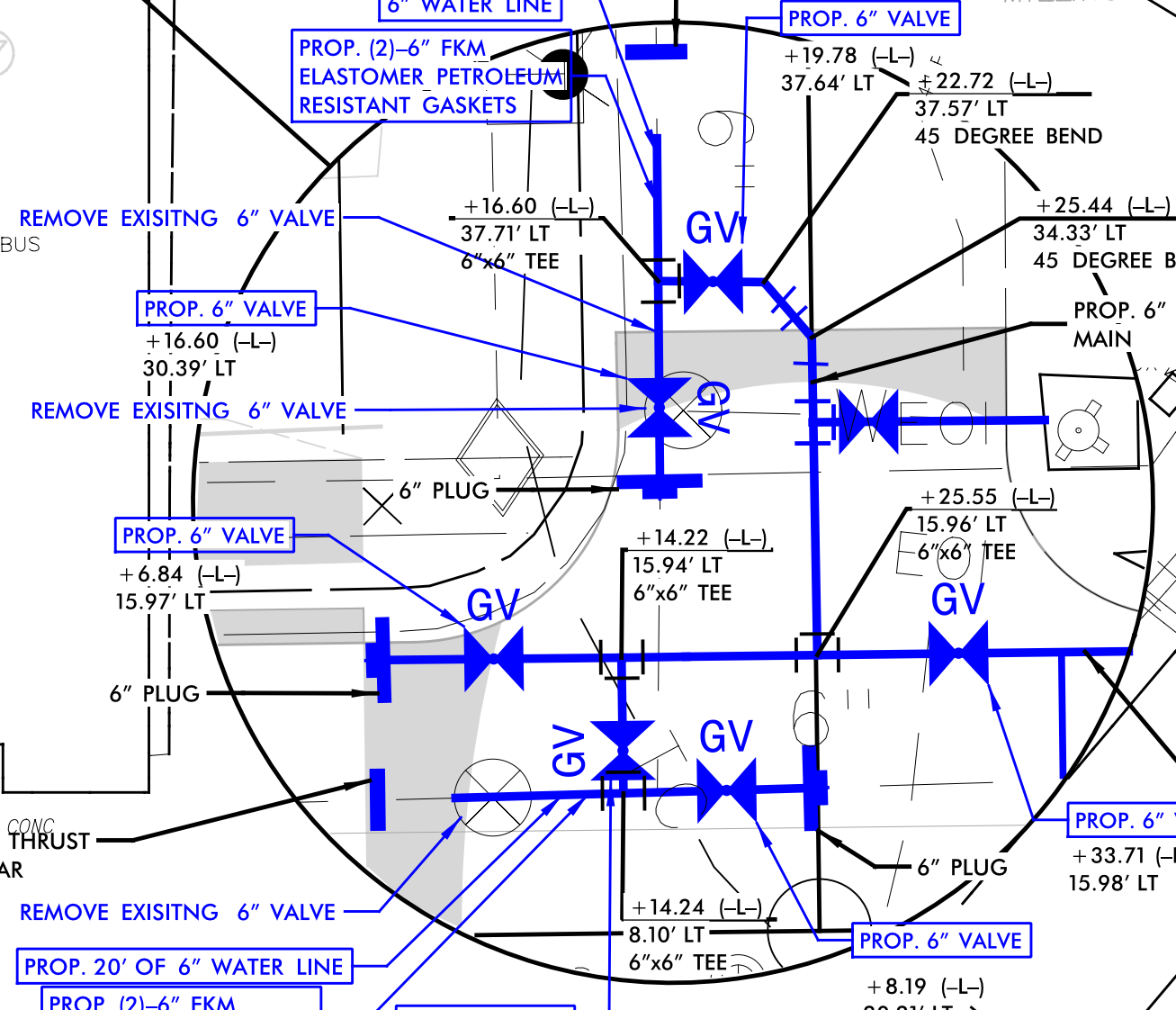


WATER MAIN TO BE INSTALLED WITH PLUG AND 2" THREADED TAP. TAP SHALL BE ACCESSIBLE DURING CONSTRUCTION. NEW WATER MAIN SHALL BE DISINFECTED, PRESSURE TESTED, AND CERTIFIED PRIOR TO MAKING FINAL CONNECTION. REMOVE PLUG AND TAP AND INSTALL FITTINGS AS REQUIRED TO MAKE CONNECTION AS SHOWN. COORDINATE WITH OWNER DURING CHANGEOVER.

INSET "E"
(3X ENLARGEMENT)



INSET "A"
(3X ENLARGEMENT)



NOTE:
THE ESTIMATED QUANTITY OF DUCTILE IRON WATER PIPE FITTINGS ON THIS PLAN SHEET IS 3,350 POUNDS. THE ACTUAL QUANTITY AND TYPE OF FITTINGS WILL VARY BASED ON FIELD CONDITIONS.

*****ALL 12" AND LARGER VALVES USE HORIZONTAL WATER VALVES AND BOX VALVES.*****