


5/14/99

PREPARED IN THE OFFICE OF:



THE WOOTEN COMPANY
120 North Roper Avenue Raleigh, NC 27603-1423
919.876.0311 fax 919.876.3109
License Number: F-0115

PROJECT REFERENCE NO.	SHEET NO.
U-5606	UC-10

DESIGNED BY: JRG
DRAWN BY: TK & CB
CHECKED BY: DGM
APPROVED BY: DGM

REVISED:

NORTH CAROLINA DEPARTMENT OF TRANSPORTATION

UTILITIES ENGINEERING SEC.
PHONE: (919) 707-6690
FAX: (919) 250-4151

Document Not Considered Final
Unless All Signatures Completed
UTILITY CONSTRUCTION
PLANS ONLY

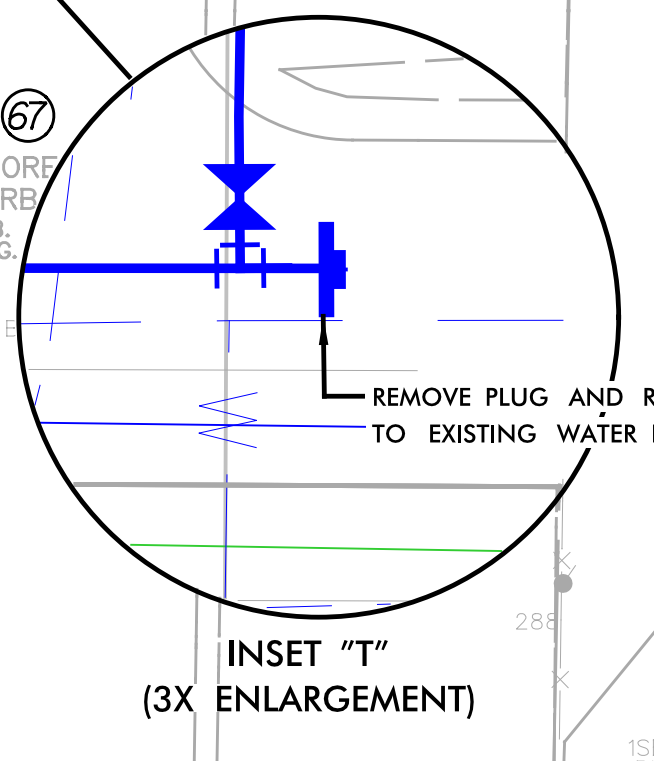
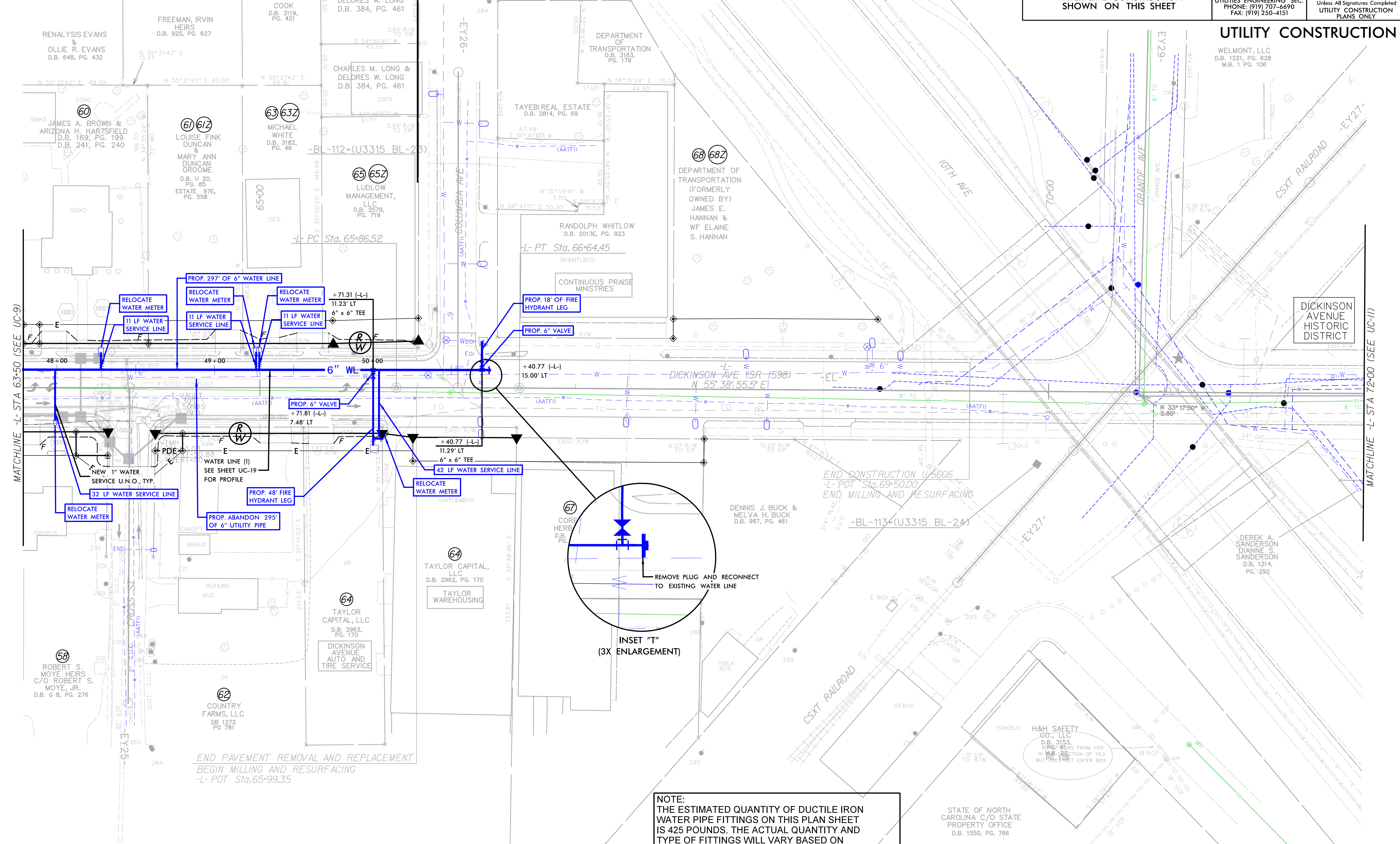
Vertical Scale: 1" = 5'
Horizontal Scale: 1" = 15'

WATER LINE CONSTRUCTION SHOWN ON THIS SHEET

WELMONT, LLC
D.B. 1221, PG. 628
M.B. 1 PG. 106

PHASING SECTION 5A
(-L-, 14TH STREET TO STA. 66 + 00)

PHASING SECTION 5B
(-L-, STA. 66 + 00 TO STA. 72 + 50)



NOTE:
THE ESTIMATED QUANTITY OF DUCTILE IRON WATER PIPE FITTINGS ON THIS PLAN SHEET IS 425 POUNDS. THE ACTUAL QUANTITY AND TYPE OF FITTINGS WILL VARY BASED ON FIELD CONDITIONS.

END PAVEMENT REMOVAL AND REPLACEMENT
BEGIN MILLING AND RESURFACING
-L- POT Sta. 65+99.35

STATE OF NORTH CAROLINA
C/O STATE PROPERTY OFFICE
D.B. 1550, PG. 766

SEE SHEET 16 FOR -L- PROFILE