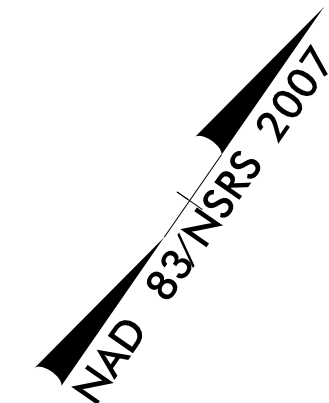


5/14/2019

PI Sta 48+77.02  
D = 0'12" 40.6" (RT)  
D = 0'22" 55.1"  
L = 55.31'  
T = 27.65'  
R = 15,000.00'  
SE = NC  
RO = NONE

**EXISTING SEWER MANHOLE INFORMATION**  
MH 2046  
INV: 63.18  
TOP: 66.67  
MH 2047  
INV: 62.07  
TOP: 66.52

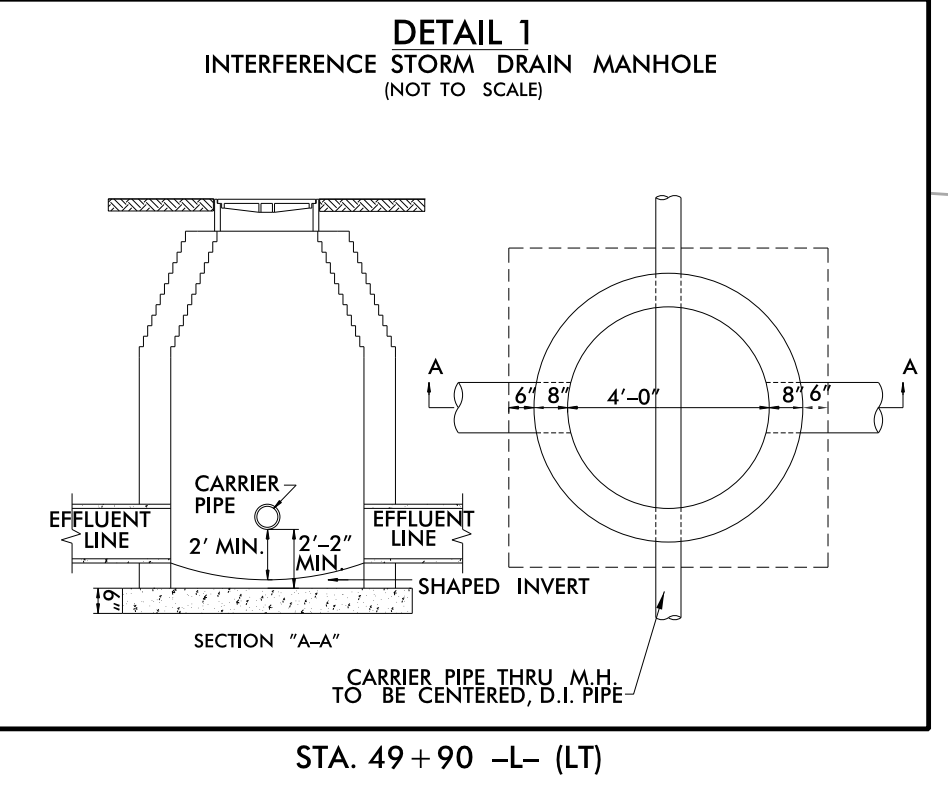
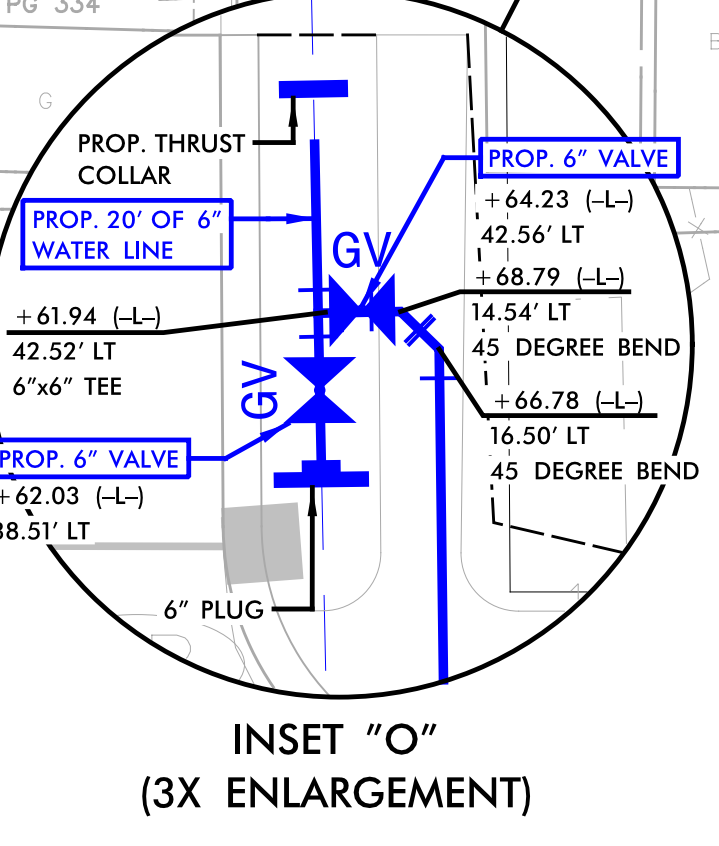
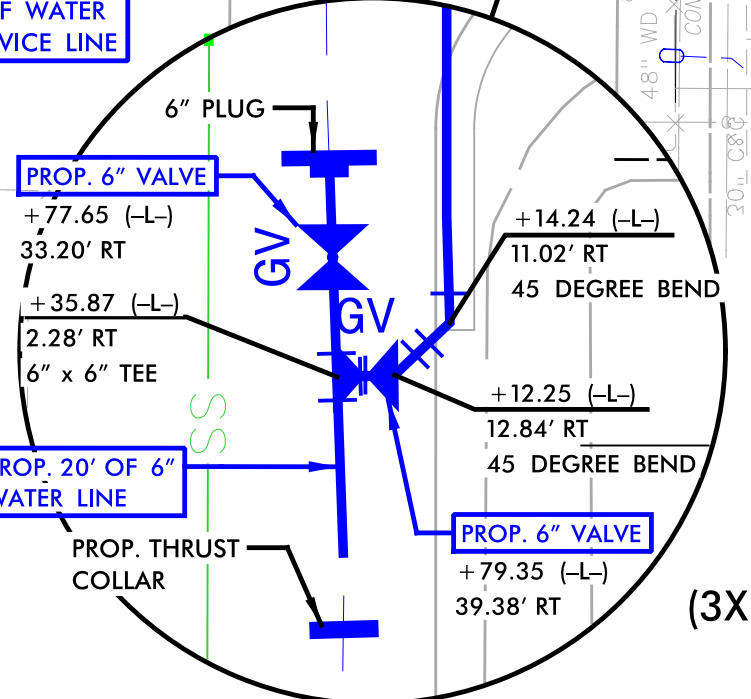
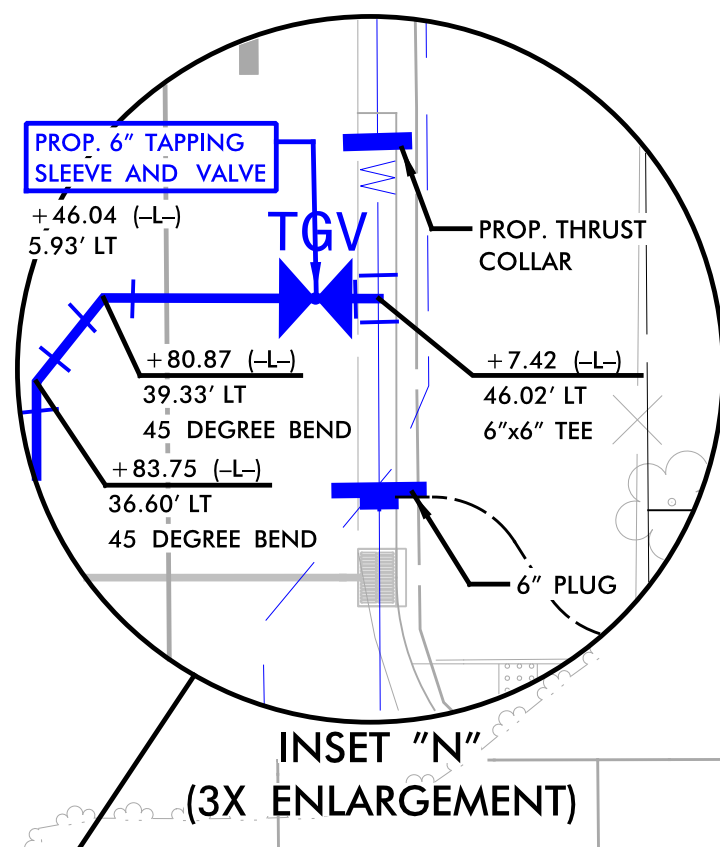
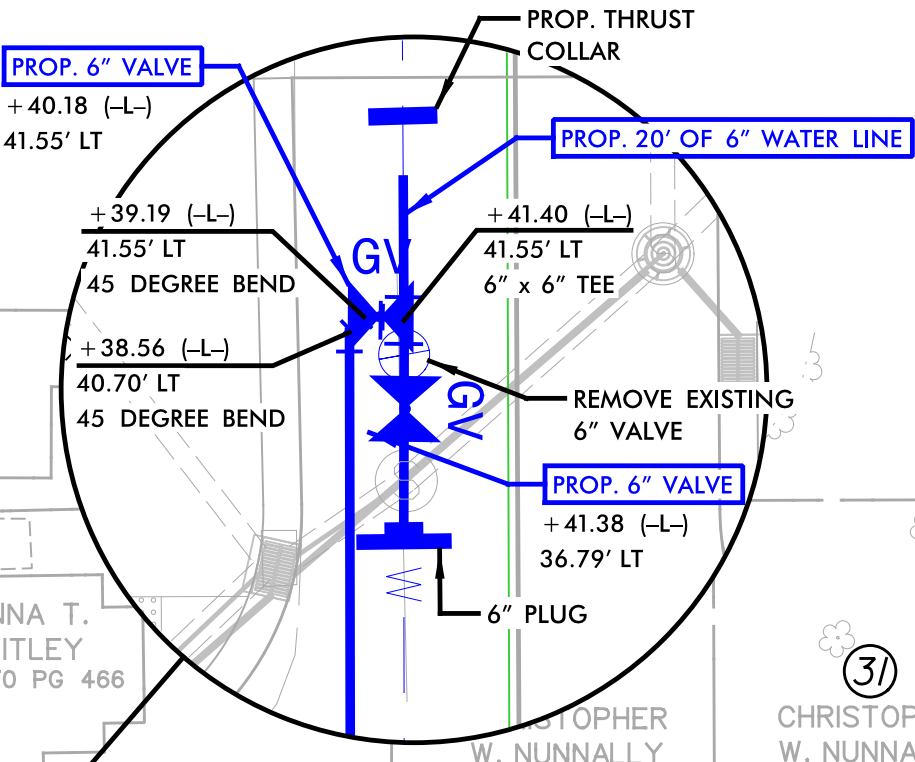
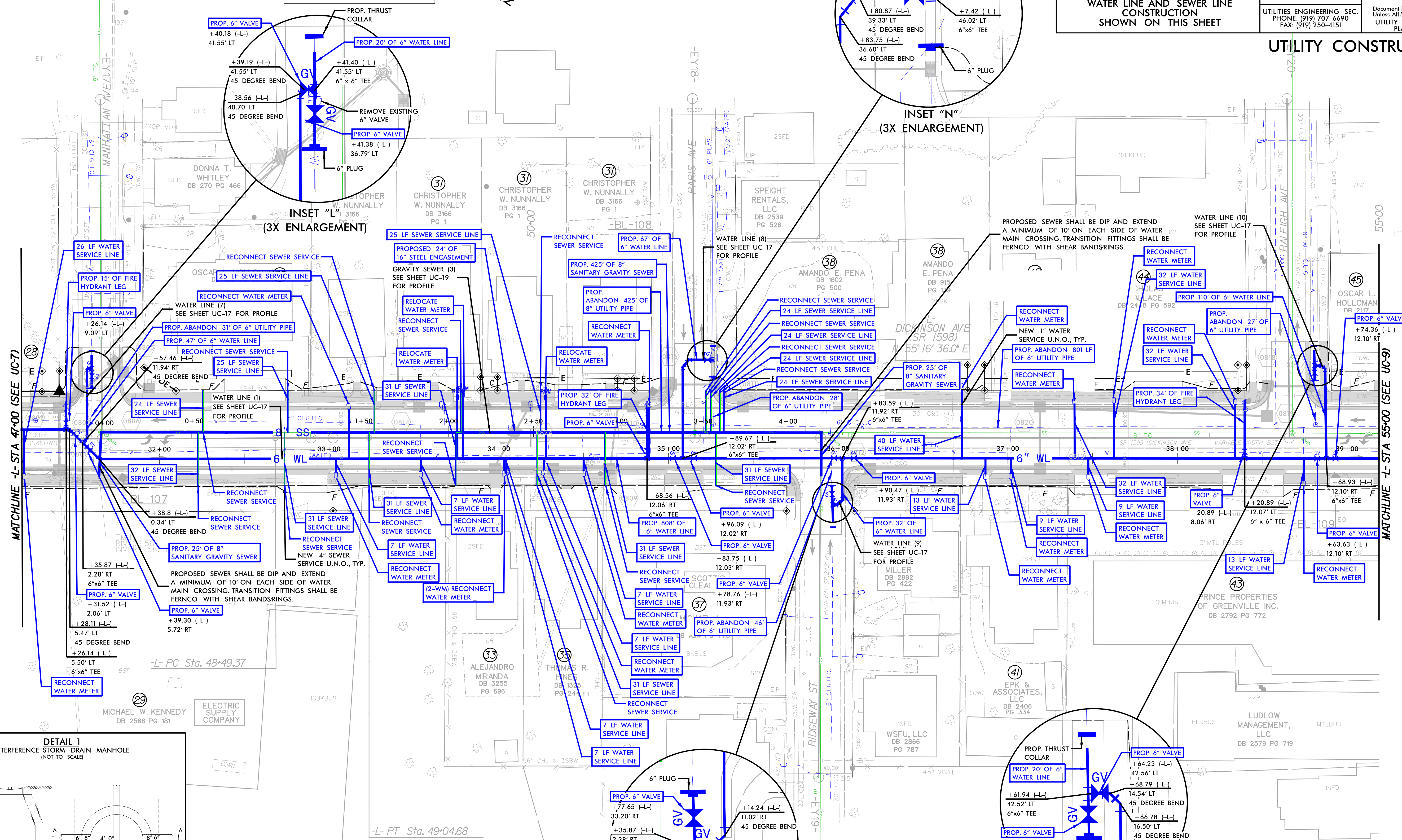


**PHASING SECTION 4**  
(-L-, STA. 41+52 TO 14TH STREET)

PREPARED IN THE OFFICE OF:		PROJECT REFERENCE NO.	SHEET NO.
 <b>THE WOOTEN COMPANY</b> 120 North Roper Avenue Raleigh, NC 27603-1423 919.876.0311 Fax 919.876.0309 License Number: F-0115		U-5606	UC-8
		DESIGNED BY: JRG	
		DRAWN BY: TK & CB	
		CHECKED BY: DGM	
		APPROVED BY: DGM	
		REVISID:	
		<b>NORTH CAROLINA DEPARTMENT OF TRANSPORTATION</b> UTILITIES ENGINEERING SEC. PHONE: (919) 707-6690 FAX: (919) 250-4151	
		Document Not Considered Final Unless All Signatures Completed UTILITY CONSTRUCTION PLANS ONLY	



**UTILITY CONSTRUCTION**



**NOTE:**  
THE ESTIMATED QUANTITY OF DUCTILE IRON WATER PIPE FITTINGS ON THIS PLAN SHEET IS 4,250 POUNDS. THE ACTUAL QUANTITY AND TYPE OF FITTINGS WILL VARY BASED ON FIELD CONDITIONS.

SEE SHEET 15 FOR -L- PROFILE