


5/14/99

EXISTING SEWER MANHOLE INFORMATION	
MH 2070	INV: 40.52
TOP: 47.42	
PROPOSED SEWER MANHOLE INFORMATION	
MH 5	INV: 40.95
TOP: 47.59	

PHASING SECTION 3 (-L-, STA. 32+25 TO STA. 41+52) PHASING SECTION 4 (-L-, STA. 41+52 TO 14TH STREET)

PREPARED IN THE OFFICE OF:



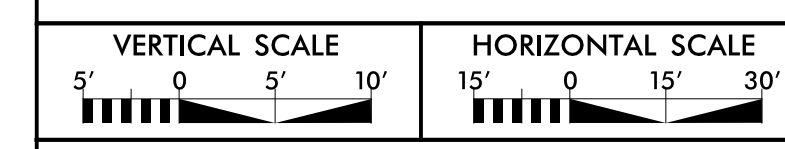
THE WOOTEN COMPANY
120 North Roper Avenue Raleigh, NC 27603-1423
919.876.0111 Fax 919.876.3109
License Number: F-0115

PROJECT REFERENCE NO.	UC-7
SHEET NO.	U-5606

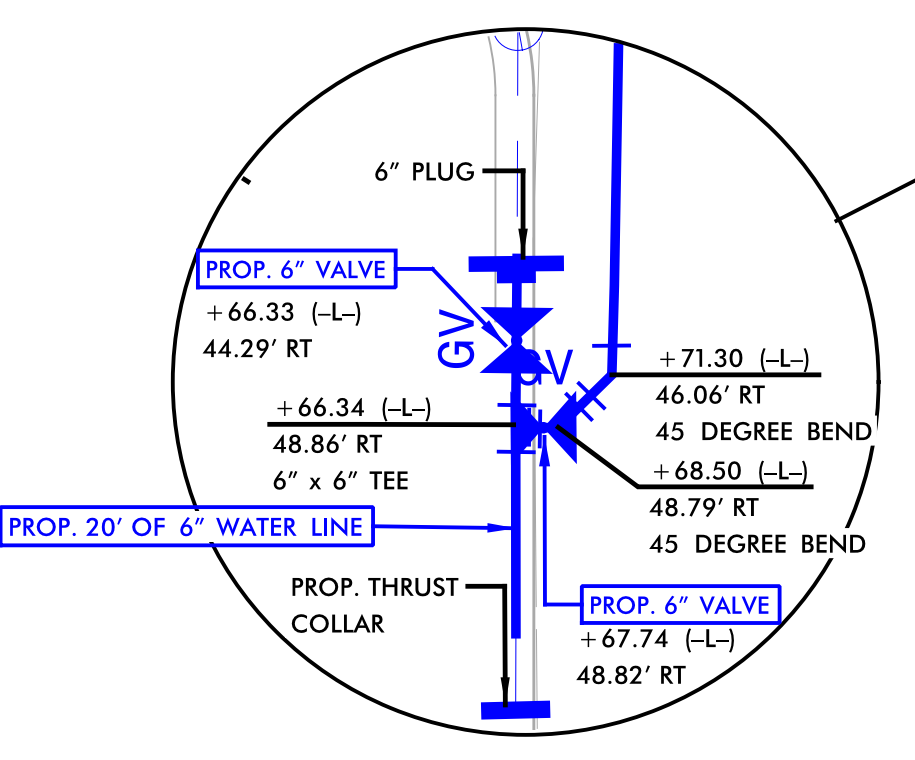
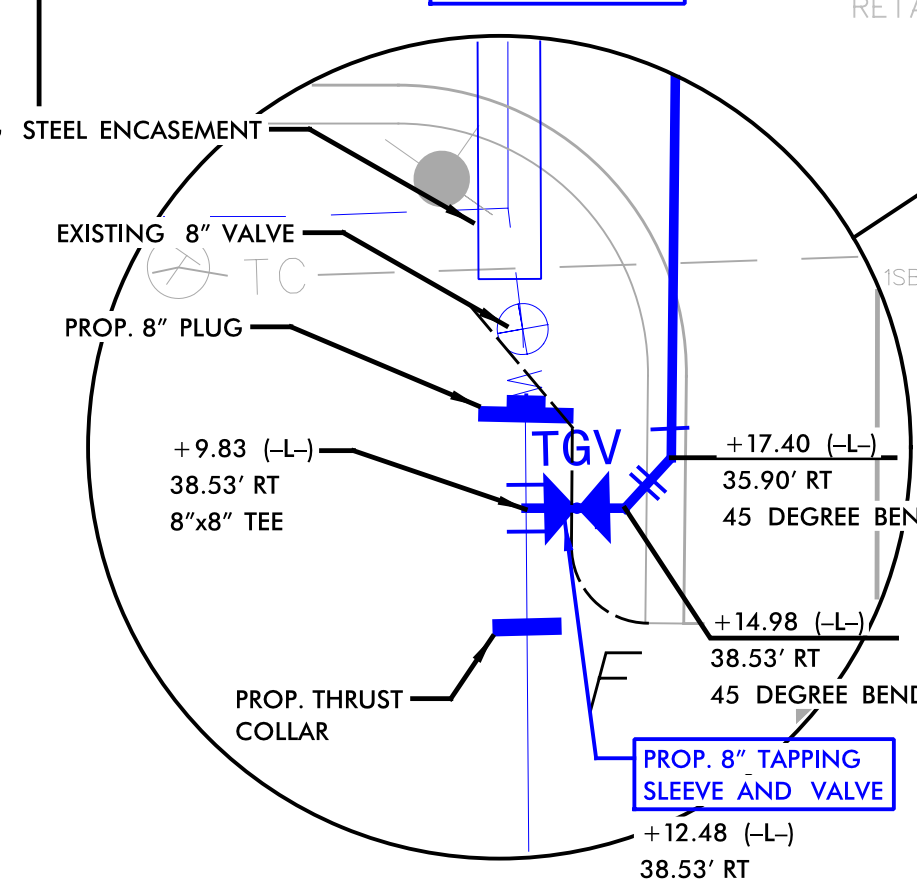
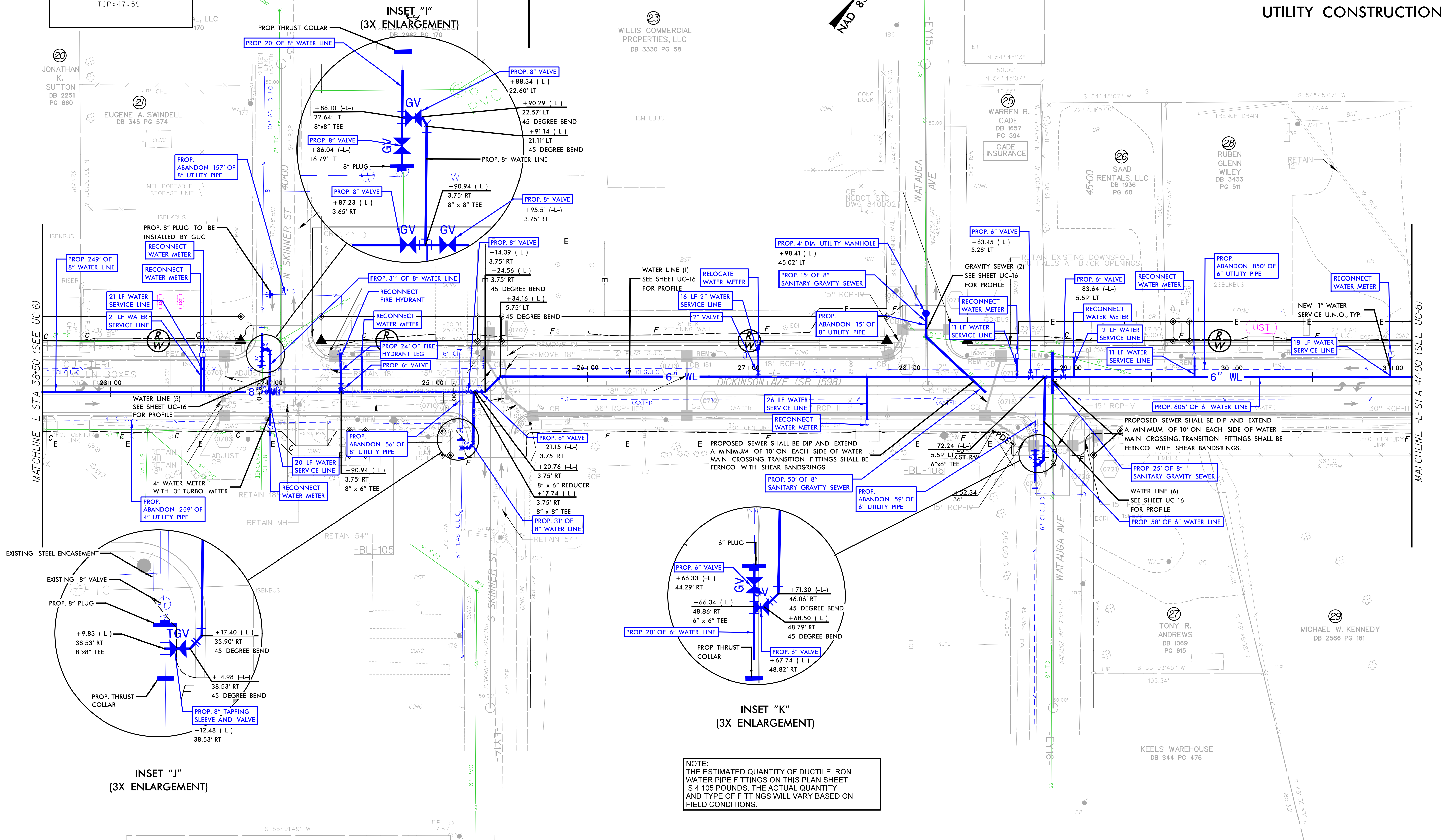
DESIGNED BY: JRG
DRAWN BY: TK & CB
CHECKED BY: DGM
APPROVED BY: DGM

REVIS: NORTH CAROLINA DEPARTMENT OF TRANSPORTATION
UTILITIES ENGINEERING SEC. PHONE: (919) 707-6690 FAX: (919) 250-4151

Document Not Considered Final Unless All Signatures Completed
UTILITY CONSTRUCTION PLANS ONLY



WATER LINE AND SEWER LINE CONSTRUCTION SHOWN ON THIS SHEET



NOTE: THE ESTIMATED QUANTITY OF DUCTILE IRON WATER PIPE FITTINGS ON THIS PLAN SHEET IS 4,105 POUNDS. THE ACTUAL QUANTITY AND TYPE OF FITTINGS WILL VARY BASED ON FIELD CONDITIONS.

NOTE: CONTRACTOR HAS THE OPTION TO PLUG, FILL AND ABANDON SECTIONS OF EXISTING STORMWATER PIPE TO BE REMOVED WHERE REMOVAL IS HINDERED BY CONFLICTS WITH UTILITIES OR OTHER CIRCUMSTANCES. AREAS TO BE DETERMINED BY THE FIELD ENGINEER.

SEE SHEET 14 FOR -L- PROFILE