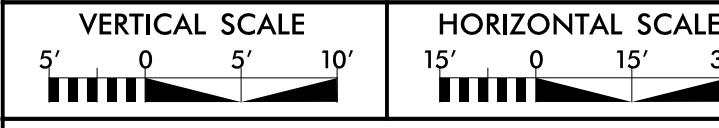


5/14/99

EXISTING SEWER MANHOLE INFORMATION

- MH 2002
INV: 62.38
TOP: 68.87
- MH 2003
INV: 62.78
TOP: 68.11
- MH 2004
INV: 65.15
TOP: 68.18
- MH 2005
INV: 66.01
TOP: 69.61

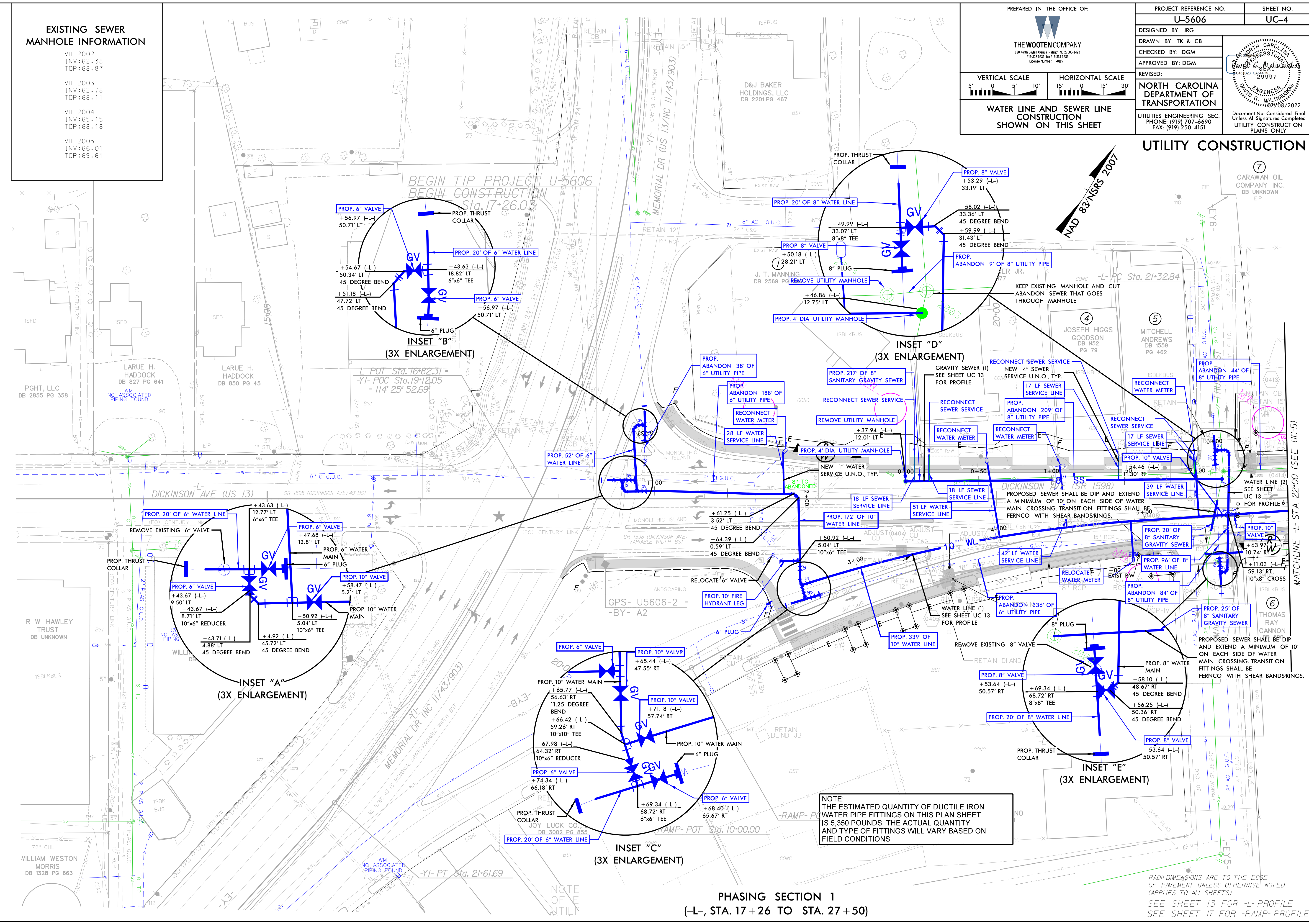
PREPARED IN THE OFFICE OF:



WATER LINE AND SEWER LINE CONSTRUCTION SHOWN ON THIS SHEET

PROJECT REFERENCE NO. U-5606	SHEET NO. UC-4
DESIGNED BY: JRG	
DRAWN BY: TK & CB	
CHECKED BY: DGM	
APPROVED BY: DGM	NORTH CAROLINA DEPARTMENT OF TRANSPORTATION UTILITIES ENGINEERING SEC. PHONE: (919) 707-6690 FAX: (919) 250-4151
REVISED:	

UTILITY CONSTRUCTION



NOTE:
THE ESTIMATED QUANTITY OF DUCTILE IRON WATER PIPE FITTINGS ON THIS PLAN SHEET IS 5,350 POUNDS. THE ACTUAL QUANTITY AND TYPE OF FITTINGS WILL VARY BASED ON FIELD CONDITIONS.

RADI DIMENSIONS ARE TO THE EDGE OF PAVEMENT UNLESS OTHERWISE NOTED (APPLIES TO ALL SHEETS)
SEE SHEET 13 FOR -L- PROFILE
SEE SHEET 17 FOR -RAMP- PROFILE