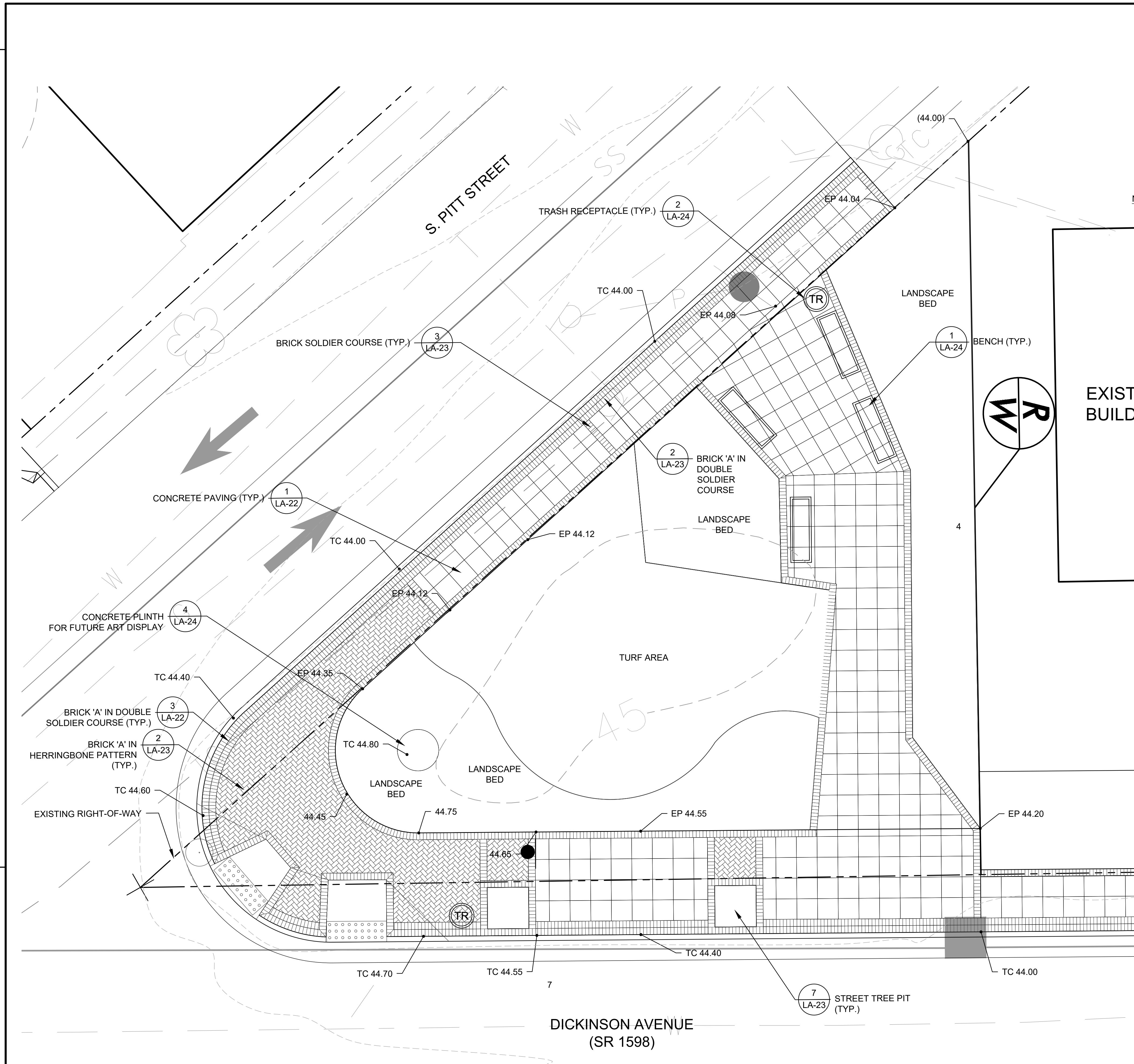


Plotted By: Gill, Koyleigh Sheet Set: Dickinson-Avenue Layout: LA-18 PITT STREET PARKLET January 25, 2022 03:18:39pm K:\RDT_LDEV\011036259_U-5606_Dickinson-AVE\Planning Phase\PI0_CAD_Files\PlanSheets\LA-18 PITT STREET PARKLET.dwg

Kimley»Horn
 421 FAYETTEVILLE STREET, SUITE 600
 RALEIGH, NC 27601

PROJECT REFERENCE NO. U-5606	SHEET NO. LA-18
SHEET TITLE: PITT STREET PARKLET	
LANDSCAPE ARCHITECT	
DOCUMENT NOT CONSIDERED FINAL UNLESS ALL SIGNATURES COMPLETED	

REVISIONS



- NOTES:**
- UTILITIES, LIGHTING, SIGNAGE, CURB RAMPS & PAVEMENT MARKINGS ARE SHOWN ON THIS PLAN FOR REFERENCE ONLY. FOR FURTHER INFORMATION, REFER TO ROADWAY DRAWINGS, UTILITY PLANS AND PAVEMENT MARKING PLANS.
 - PEDESTRIAN & VEHICULAR LIGHTS ARE SHOWN ON THIS PLAN FOR REFERENCE ONLY. FOR FURTHER INFORMATION SEE LIGHTING DRAWINGS.
 - FOR ALL HARDSCAPE MATERIALS SEE LEGEND ON SHEET LA-1.
 - SEE PLANTING PLAN ON SHEET LA-20.
 - FOR SIDEWALK ALIGNMENT AND EXTENTS, REFER ROADWAY DRAWINGS.
 - CONTRACTOR SHALL ENSURE THAT THE PATH OF TRAVEL IS MAINTAINED AT A MINIMUM WIDTH OF 36" IN ALL INSTANCES.
 - SIGN LOCATIONS ARE REFERENCED PER NCDOT SIGNING PLANS AND CONTRACTOR TO NOTIFY RESIDENT ENGINEER OF ANY CONFLICTS.
 - CONTRACTOR SHALL PROVIDE POSITIVE DRAINAGE AWAY FROM ALL BUILDINGS. ALL SUBSURFACE DRAINAGE INFRASTRUCTURE (I.E. YARD INLETS, FRENCH DRAINS, ETC.) SHALL BE THE RESPONSIBILITY OF THE CONTRACTOR BASED UPON FIELD CONDITIONS. THESE PLANS HAVE ASSUMED POSITIVE DRAINAGE TO SHEET FLOW ACROSS THE SITE.

LEGEND

- EXISTING ROW
- PROPOSED ROW
- HORIZONTAL ALIGNMENT
- [Pattern] BRICK (HERRINGBONE, PEDESTRIAN)
- [Pattern] BRICK (RUNNING BOND)
- [Pattern] BRICK BAND SOLDIER COURSE
- [Pattern] BRICK BAND DOUBLE SOLDIER COURSE
- [Pattern] 2'X2' SCORED CONCRETE
- SIGNS (SEE ROADWAY PLANS)

ACRONYM LEGEND:
 (NUMBERS REFER TO SPOT ELEVATIONS)

- ### PROPOSED ELEVATION
- +### EXISTING ELEVATION
- BS BOTTOM OF STEPS
- BW BOTTOM OF WALL
- EP EDGE OF PAVING
- FG FINISHED GRADE
- TC TOP OF CURB
- TS TOP OF STEPS
- TW TOP OF WALL

GRAPHIC SCALE: 3/16" = 1'-0"
 0 2.5' 5' 10'