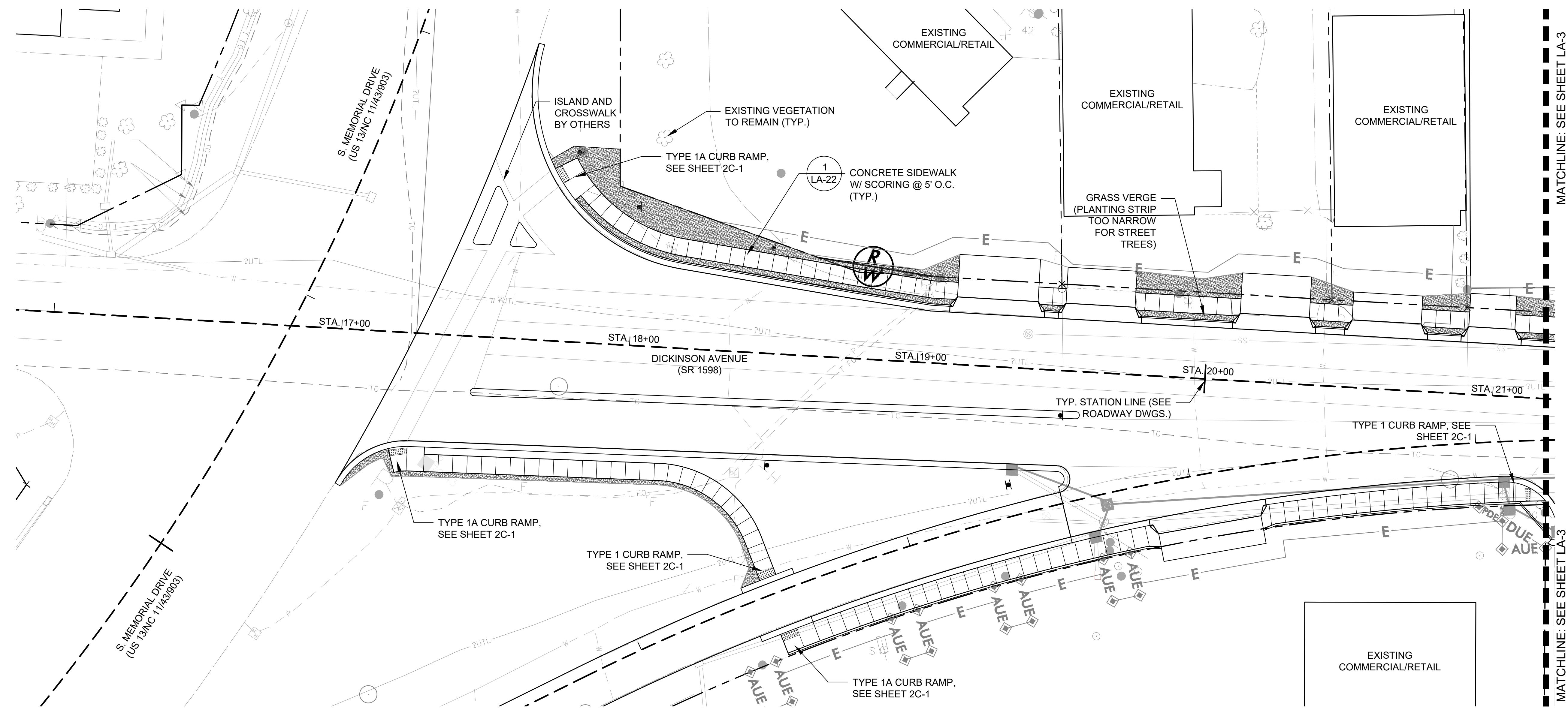


Plotted By: Gill, Koyleigh Sheet Set: Dickinson-Avenue Layout: LA-2 STREETScape PLAN January 25, 2022 03:05:55pm K:\NRT\DEV\011036259_U-5606_Dickinson_AVE\Planning Phase\PI0_CAD Files\PlanSheets\LA-2 STREETScape PLAN.dwg

PROJECT REFERENCE NO.	SHEET NO.
U-5606	LA-2
SHEET TITLE: STREETScape PLAN	
LANDSCAPE ARCHITECT	
DOCUMENT NOT CONSIDERED FINAL UNLESS ALL SIGNATURES COMPLETED	

REVISIONS



PLANT SCHEDULE LA-2

LAWN	CODE	QTY	BOTANICAL / COMMON NAME	CONT.
	EO	1,950 SF	EREMOCHLOA OPHIUROIDES CENTIPEDE GRASS	SEED

NOTES:

- UTILITIES, LIGHTING, SIGNAGE, CURB RAMPS & PAVEMENT MARKINGS ARE SHOWN ON THIS PLAN FOR REFERENCE ONLY. FOR FURTHER INFORMATION, REFER TO ROADWAY DRAWINGS, UTILITY PLANS AND PAVEMENT MARKING PLANS.
- ALL CURB RAMPS SHALL BE CONSTRUCTED IN ACCORDANCE TO NCDOT 848.05 UNLESS SPECIFIED OTHERWISE ON THE PLAN ABOVE. ANY CURB RAMP WHICH DIFFERS FROM THESE TYPICAL STANDARDS SHALL BE CONSTRUCTED IN ACCORDANCE WITH THE TYPE SPECIFIED AS DRAWN ON SHEETS 2C-1, 2C-2, AND 2C-3 OF THE ROADWAY PLAN SET.
- PEDESTRIAN & VEHICULAR LIGHTS ARE SHOWN ON THIS PLAN FOR REFERENCE ONLY. FOR FURTHER INFORMATION REFER TO LIGHTING DRAWINGS.
- SIGN LOCATIONS ARE REFERENCED PER NCDOT SIGNING PLANS AND CONTRACTOR TO NOTIFY OWNER'S REPRESENTATIVE OF ANY CONFLICTS.
- FOR SIDEWALK ALIGNMENT AND EXTENTS, REFER ROADWAY DRAWINGS.
- CONTRACTOR SHALL ENSURE THAT THE PATH OF TRAVEL IS MAINTAINED AT A MINIMUM WIDTH OF 36" IN ALL INSTANCES.
- CONTRACTOR SHALL SEED ALL EXTENTS OF GRADING DISTURBANCE LIMITS WITH SPECIFIED CENTIPEDE SEED MIX LISTED ON THIS SHEET. SEEDED AREAS HAVE BEEN PROVIDED FOR DISTURBED AREAS PER THE SLOPE/STAKES FILE AS DESIGNED ON THE ROADWAY PLAN SETS. CONTRACTOR SHALL BRING ANY DISCREPANCIES TO THE ATTENTION OF THE RESIDENT ENGINEER PRIOR TO INSTALLATION.

LEGEND

- EXISTING ROW
- PROPOSED ROW
- HORIZONTAL ALIGNMENT
- SIGNS (SEE ROADWAY PLANS)

