

PROJECT REFERENCE NO.	SHEET NO.
U-5606	EC-20/CONST.12
RDW SHEET NO.	HYDRAULICS ENGINEER
ROADWAY DESIGN ENGINEER	

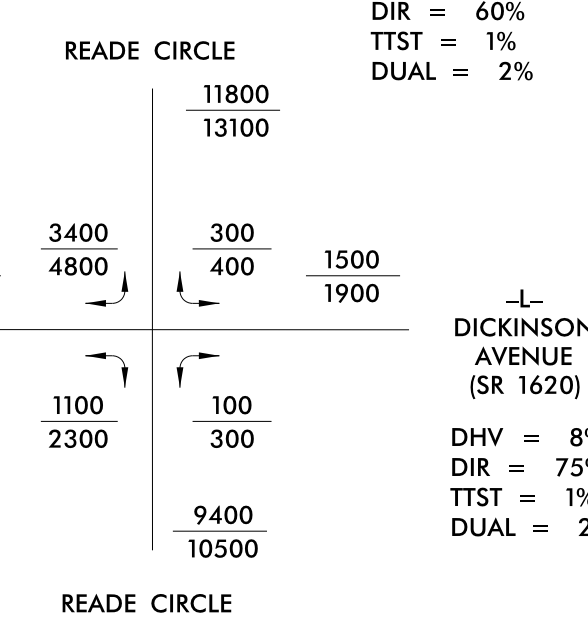
NOTES:
 1 TIE TO EXIST CURB AND GUTTER AT EXIST CONCRETE JOINT
 TRANSITION 2'-6" C&G TO MATCH EXIST GUTTER WIDTH AS NECESSARY
 2 TIE TO EXISTING CONCRETE SIDEWALK
 3 LIMITS OF PAVEMENT REMOVAL AND REPLACEMENT
 4 ADJUSTMENT OF MANHOLE
 5 ADJUSTMENT OF METER OR VALVE BOX
 6 REMOVE AND STOCKPILE EXISTING GRANITE CURB
 7 RETAIN EXISTING MAST ARM
 8 PROP CONC/BRICK PAVER SIDEWALK (VAR) ON PROP BACK OF CURB TIE TO EXIST BUILDING FACE
 9 REPLACE IN EXISTING TRENCH
 10 PROPOSED JB W MH
 11 RETAIN EXIST CURB RAMP

2020 ADT
 2040 ADT

DHV = 9%
 DIR = 60%
 TTST = 1%
 DUAL = 2%

DHV = 8%
 DIR = 55%
 TTST = 1%
 DUAL = 2%

DHV = 8%
 DIR = 60%
 TTST = 1%
 DUAL = 2%

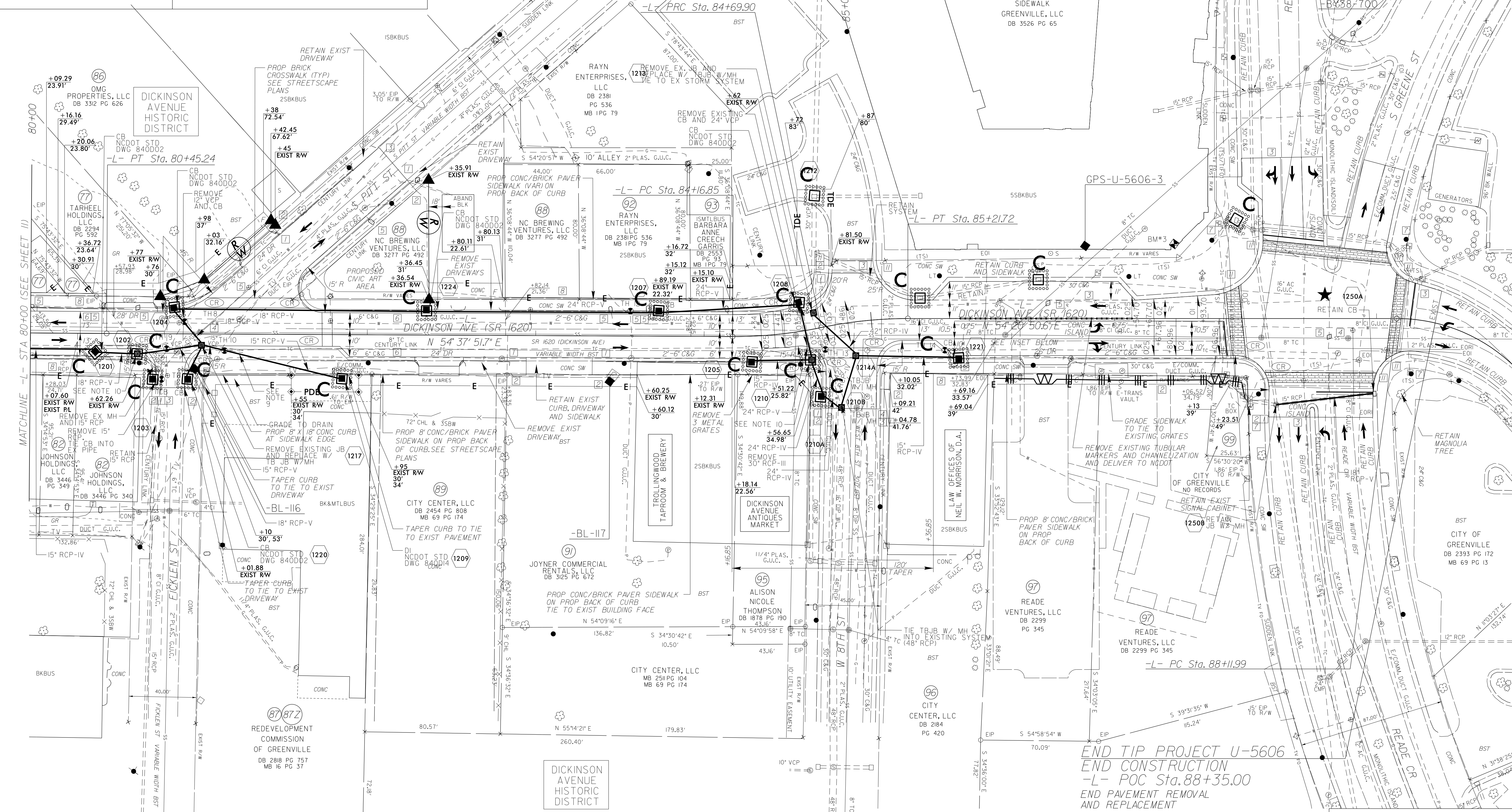


BRICK CROSSWALK
 SEE SHEET 2C-10

UTILIZE FABRIC INLET PROTECTION
 IN LIEU OF TYPE C INLET PROTECTION
 WHERE WATER MAY POND ON
 ROADWAY USED BY PUBLIC TRAFFIC

NAD 83 NRS 2007

REVISIONS



MATCHLINE -L- STA 80+00 (SEE SHEET 11)

END TIP PROJECT U-5606
 END CONSTRUCTION
 -L- POC Sta. 88+35.00
 END PAVEMENT REMOVAL
 AND REPLACEMENT

NOTE: CONTRACTOR HAS THE OPTION TO PLUG, FILL, AND ABANDON SECTIONS OF EXISTING STORMWATER PIPE TO BE REMOVED WHERE REMOVAL IS HINDERED BY CONFLICTS WITH UTILITIES OR OTHER CIRCUMSTANCES. AREAS TO BE DETERMINED BY THE FIELD ENGINEER.

★ TRAFFIC SIGNAL
 SEE SHEET 17 FOR -L- PROFILE

FILE \$
 DATE \$